

# How to fix the loss of desktop screen on Windows 10

Losing your Windows 10 desktop may be because you mistook the Tablet mode.

Many people experience a loss of the desktop, and all the icons on the computer disappear, only black and the Start menu underneath. There is also a black Windows screen error, but there is no content on the screen and the desktop is still missing, there is a Start menu. In fact, this is not an error, but only because users put the computer into Tablet Mode on Windows 10 only.

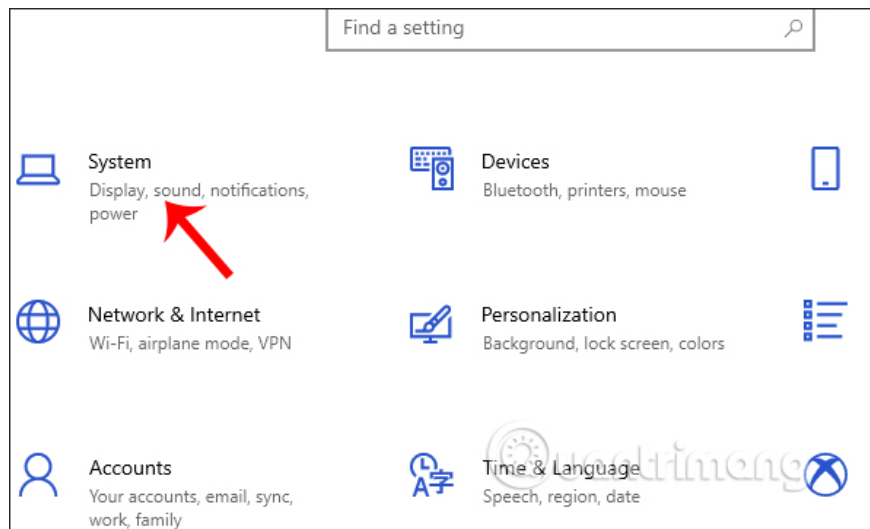
When we use this Tablet Mode, the computer will turn into a tablet for easier use. However, this mode is only suitable when users use the laptop with a touch screen only. For normal laptops or computers, it is impossible to use this Tablet Mode, and cause a loss of the desktop.

1. How to fix vertical screen stripes, horizontal stripes
2. Instructions to fix touch screen error on Windows 10
3. Instructions to fix blue screen error on computer
4. How to fix Windows 10 hangs on the Welcome screen

## Instructions to retrieve Windows 10 desktop screen

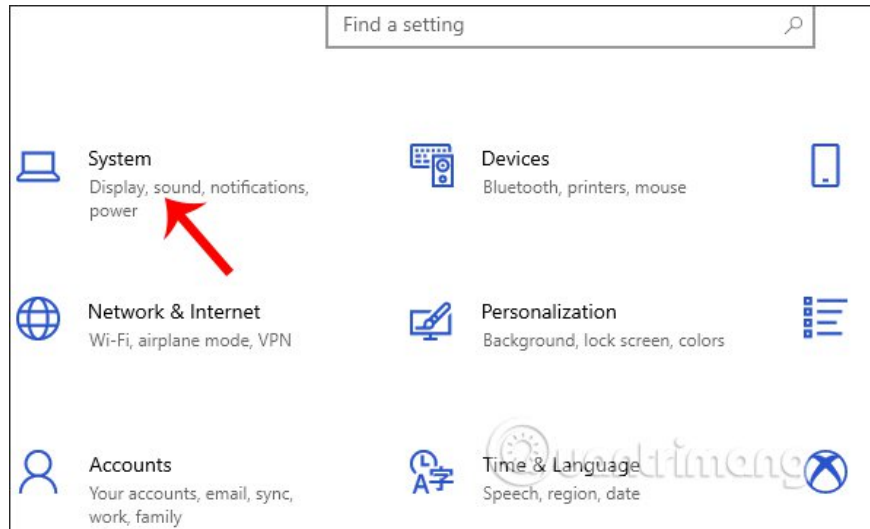
### Step 1:

We press **the Windows + I key combination** to open the Windows Settings interface. Then click on **the System section** to access Tablet mode and change the settings.

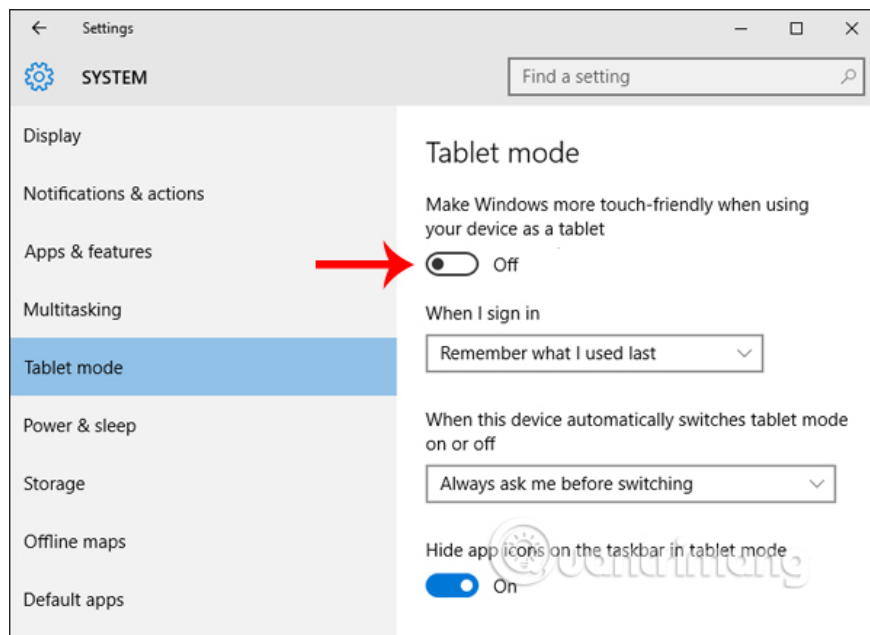


### Step 2:

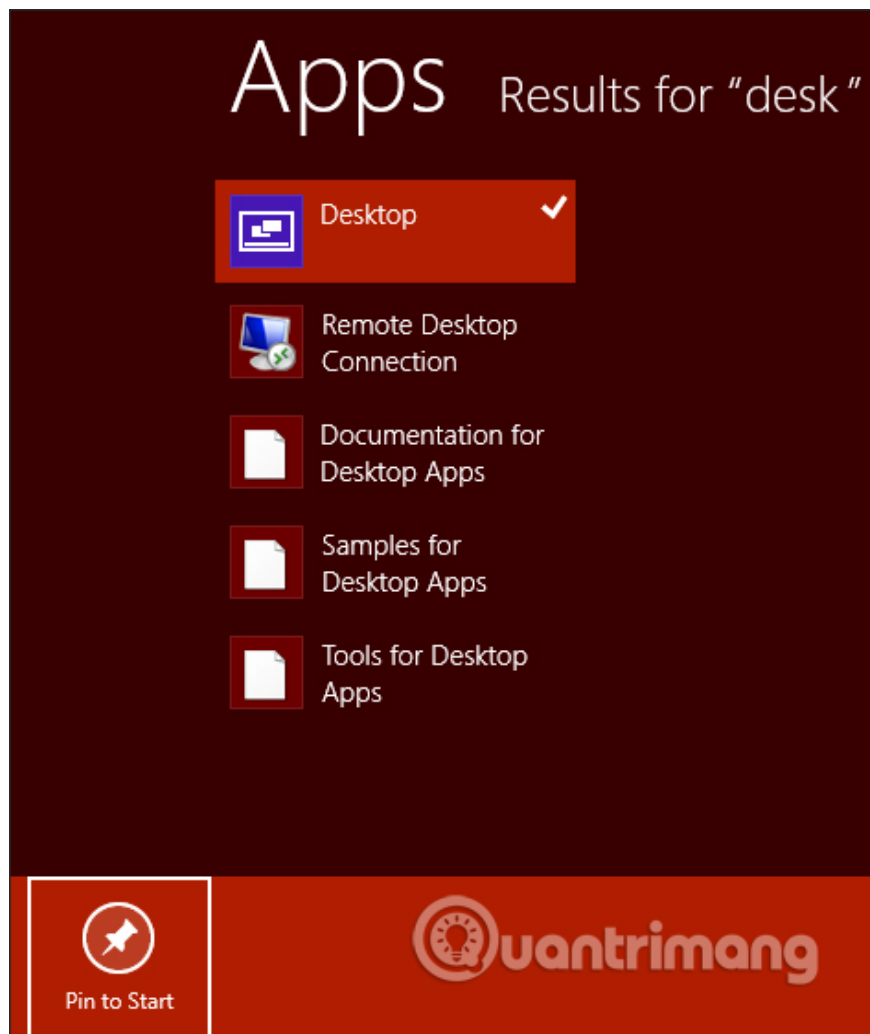
Switch to the new interface, users press **the Tablet Mode** in the list on the left of the screen.



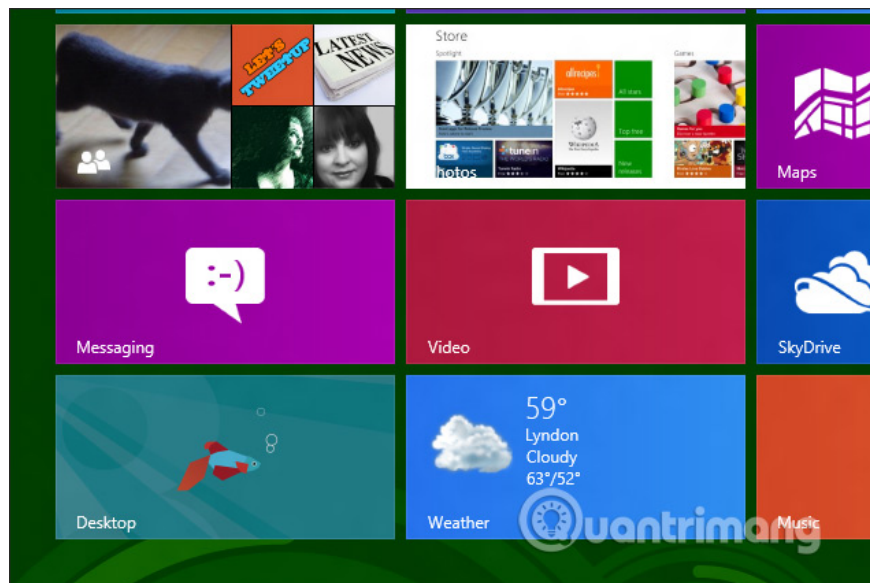
Next we switch **Tablet mode to Off** to turn it off.



Windows 10 has removed the Desktop icon in the Start menu but only Windows 8 has this feature. Some people have a Desktop icon that is not displayed in the Start menu interface, and can be pinned to the Start interface again. Click **Desktop** in the search field, when the results are displayed, right-click and choose **Pin to Start** .



The resulting Desktop icon is displayed in the Start menu as shown below.



If your computer has a black desktop condition, disappears from software icons, browsers, and installation tools, but only the Start menu, you should check your computer settings, if you turn on Tablet mode. or not. If the computer is in a black state and we cannot use it, we will find ways to fix the computer black screen error.

I wish you all success!

You finished reading the article "**How to fix the loss of desktop screen on Windows 10**" edited by the [TipsMake](#) team. We hope this article has provided you with many useful tech tips and tricks. You can search for similar articles on tips and guides. Thank you for reading and for following us regularly.