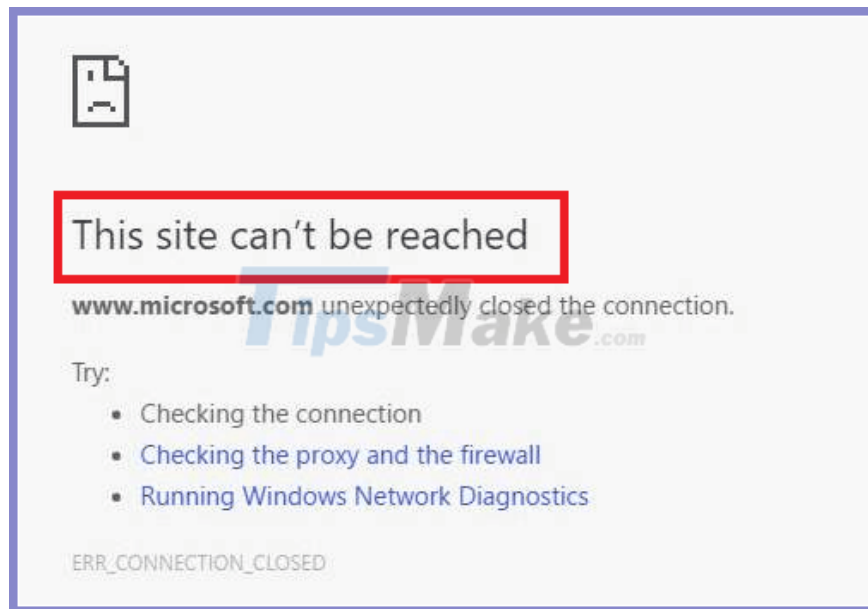


# How to fix the error site can't be reached on the Google Chrome browser

Instructions on how to fix the error site can't be reached on chrome browser, this is an error because chrome cannot resolve the DNS address, leading to a software conflict.

You are accessing the website very normally, suddenly you see the error **site can't be reached** on Google Chrome browser. Do not worry too much because in this article I will guide you to fix this error thoroughly.



When surfing the web, many times I encountered the situation of not being able to browse the web using the Google Chrome browser with the message: 'This site can't be reached'.

Include the following error codes at the bottom:

1. err\_connection\_refused
2. Server DNS address could not be found
3. DNS\_PROBE\_FINISHED\_NXDOMAIN

In fact, this error is caused by the browser unable to resolve the DNS address, leading to a software conflict. You can see this error on all versions of Google Chrome as well as Windows.

So what is the cause of the **error site can't be reached** ? It can be anything related to Chrome settings, including DNS settings or your network card driver.

In the article below, we will see how to fix the **error this site can't be reached on Google Chrome browser** using 10 different methods.

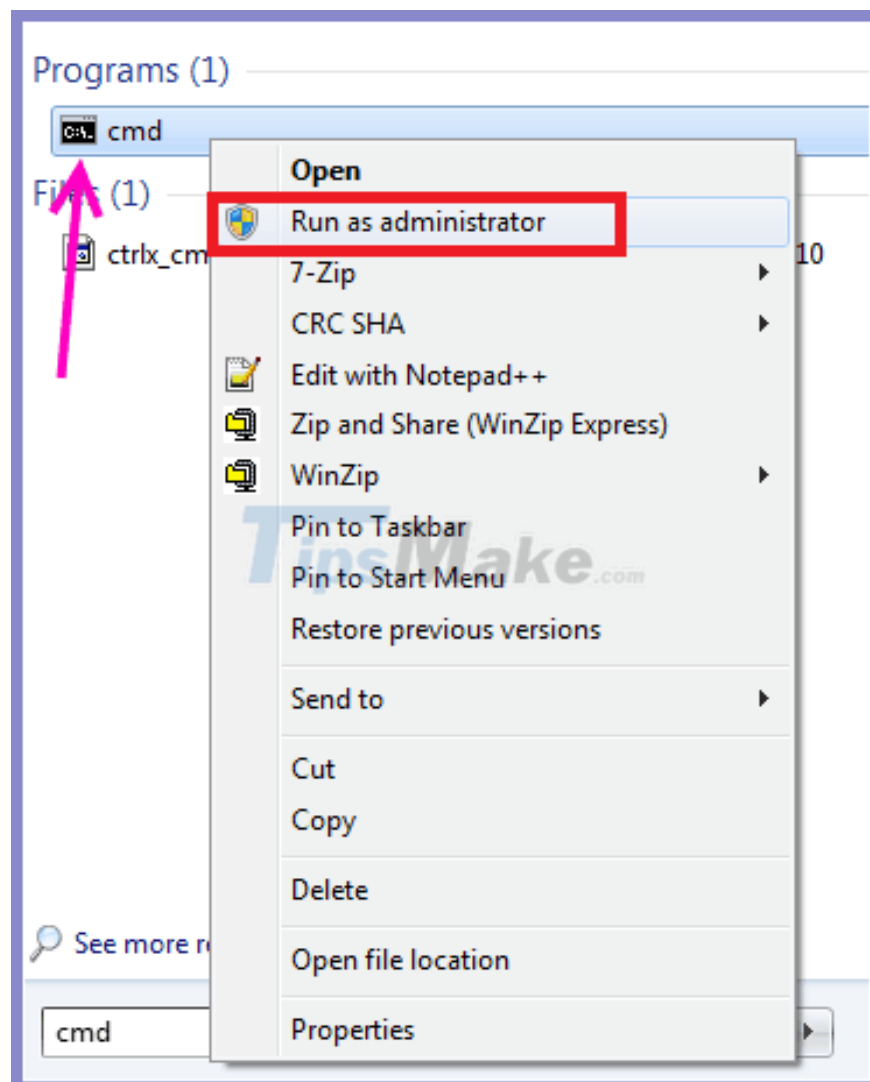
## Method 1: Refresh TCP / IP

Refreshing TCP / IP is a fairly simple method to quickly **fix the site can't be reached on Chrome error** . To **refresh TCP / IP** , follow these steps:

**Step 1:** Open **Command Prompt** with admin rights.

To do so, press the **Start** button on your computer and type **cmd** in the search box

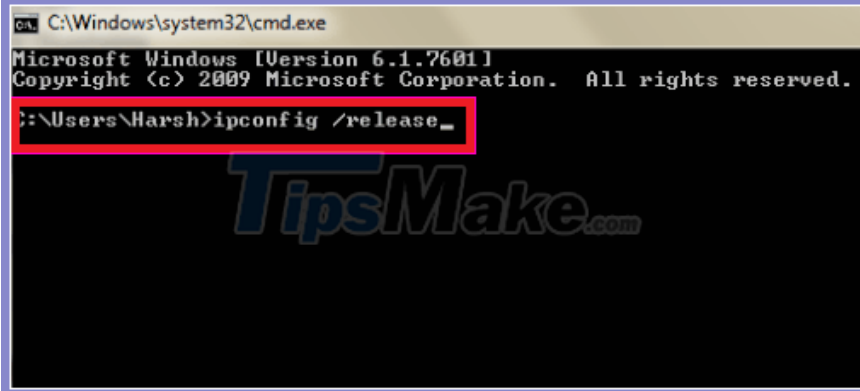
-> **Command Prompt** option will appear. Proceed right-click on it and click **Run as administrator**.



**Step 2:** Run the following commands in the **Command Prompt** one by one.

To do so, type the first command '*ipconfig / release*' and press **Enter** . When the operation is complete, type the second command '*ipconfig / all*' , and so on until the last command.

**Here is the list of commands you need to run:**



```
C:\Windows\system32\cmd.exe
Microsoft Windows [Version 6.1.7601]
Copyright (c) 2009 Microsoft Corporation. All rights reserved.

C:\Users\Harsh>ipconfig /release_
```

The screenshot shows a Windows command prompt window with the title bar "C:\Windows\system32\cmd.exe". The text inside the window reads: "Microsoft Windows [Version 6.1.7601] Copyright (c) 2009 Microsoft Corporation. All rights reserved. C:\Users\Harsh>ipconfig /release\_". A red rectangular box highlights the command "ipconfig /release\_" on the line. A large, semi-transparent watermark "TipsMake.com" is visible in the background of the command prompt.

Once all these commands have been run, reboot your computer and see if the web is accessible on Chrome. If not, try the next method.

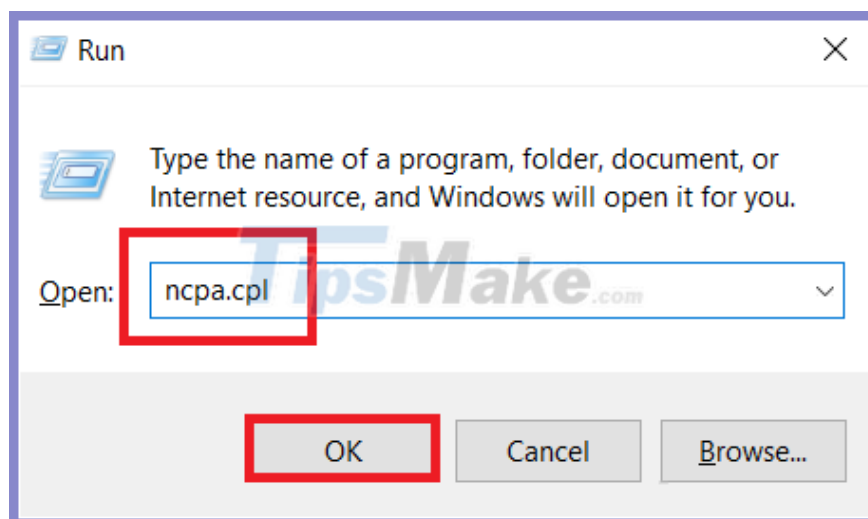
## **Method 2: Change DNS IPv4 address**

The IPv4 DNS address is usually set by default by the server or set to a certain address by the Internet service provider. Sometimes, this may cause your Chrome to **error site can't be reached**.

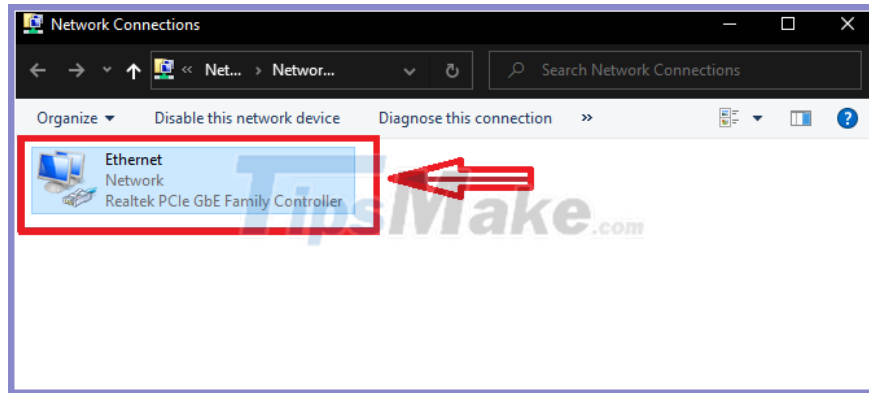
Try changing it to **Google's DNS** server address , most likely this way will solve your problem. Here's how to do it:

**Step 1:** Press the key combination Windows + R.

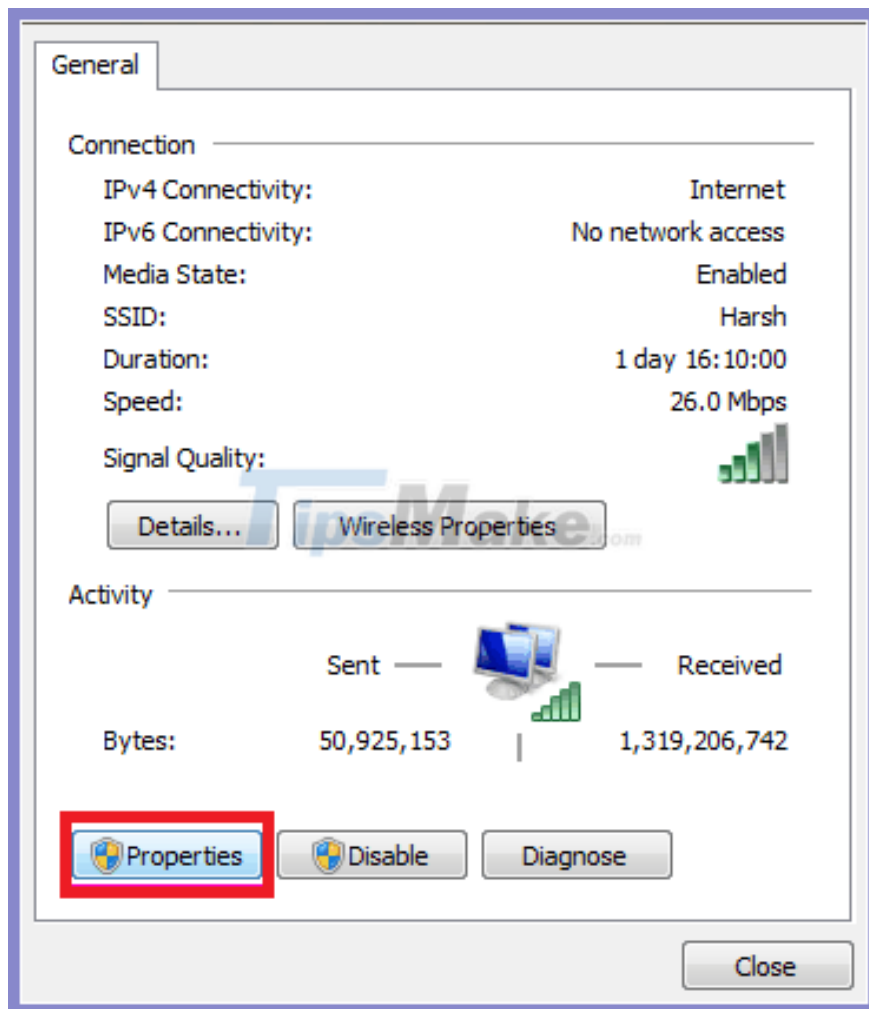
**Step 2:** Enter: *ncpa.cpl* -> Click **OK**.



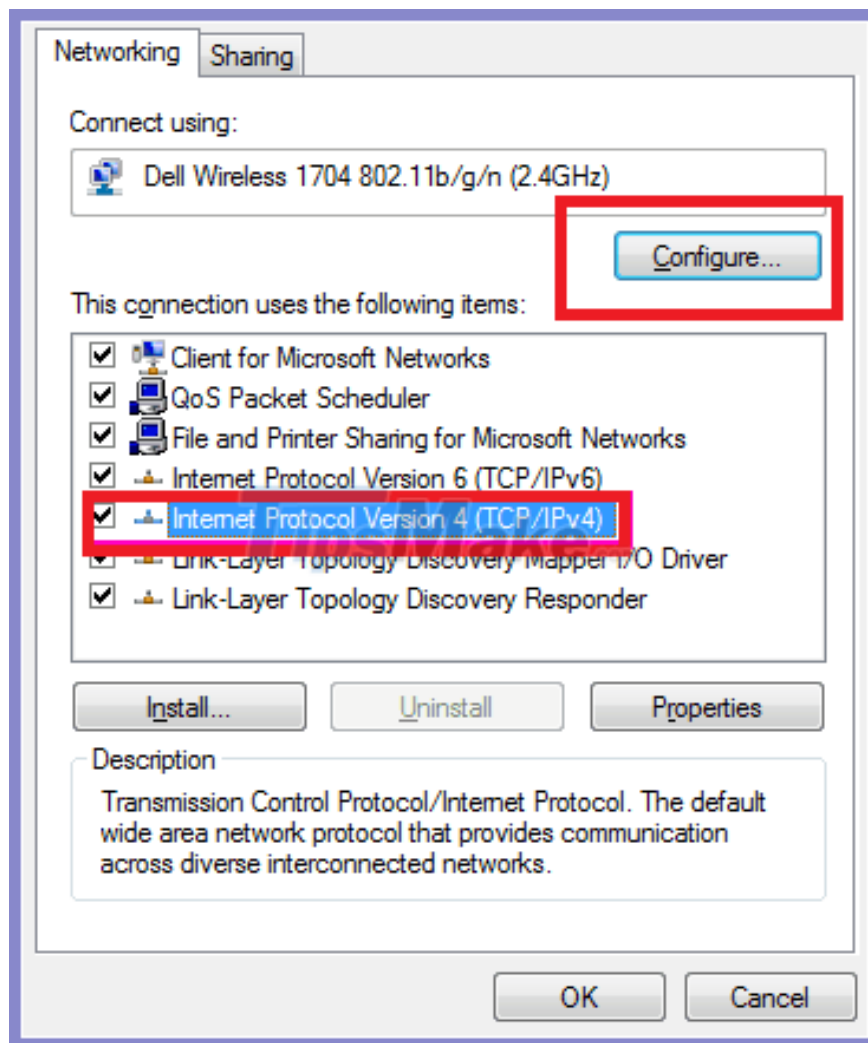
**Step 3:** A window appears, double-click your Internet connection.



**Step 4:** At the **General** window -> Click the **Properties** button .



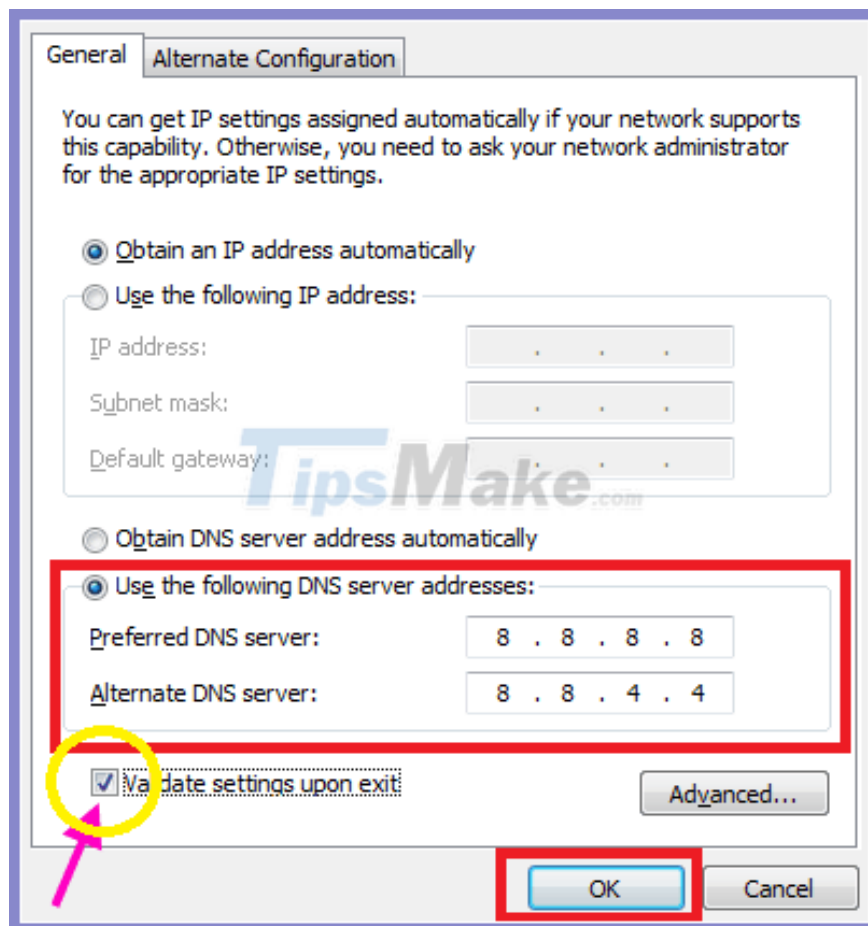
**Step 4:** In the **Properties** window -> click on **Internet Protocol Version 4 (TCP / IPv4)**.



**Step 5:** Here, click on the option **Use the following DNS server address:**

-> Enter **Google DNS** as follows, then click **OK**.

1. **Preferred DNS Server:** 8.8.8.8
2. **Alternate DNS Server:** 8.8.4.4



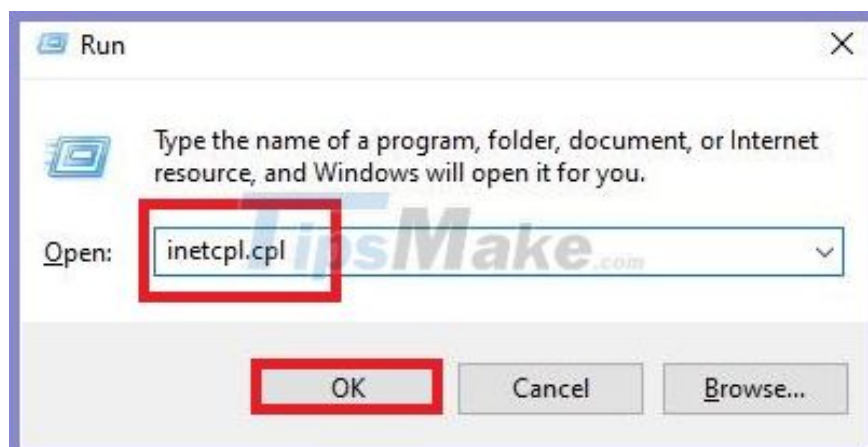
Next, go back to Chrome and check if this fixes the **error site can't be reached** or not. If not then try method number 3 now.

### Method 3: Check the Automatically detect settings Option feature

**Step 1:** Press the key combination Windows + R to open the Run dialog box.

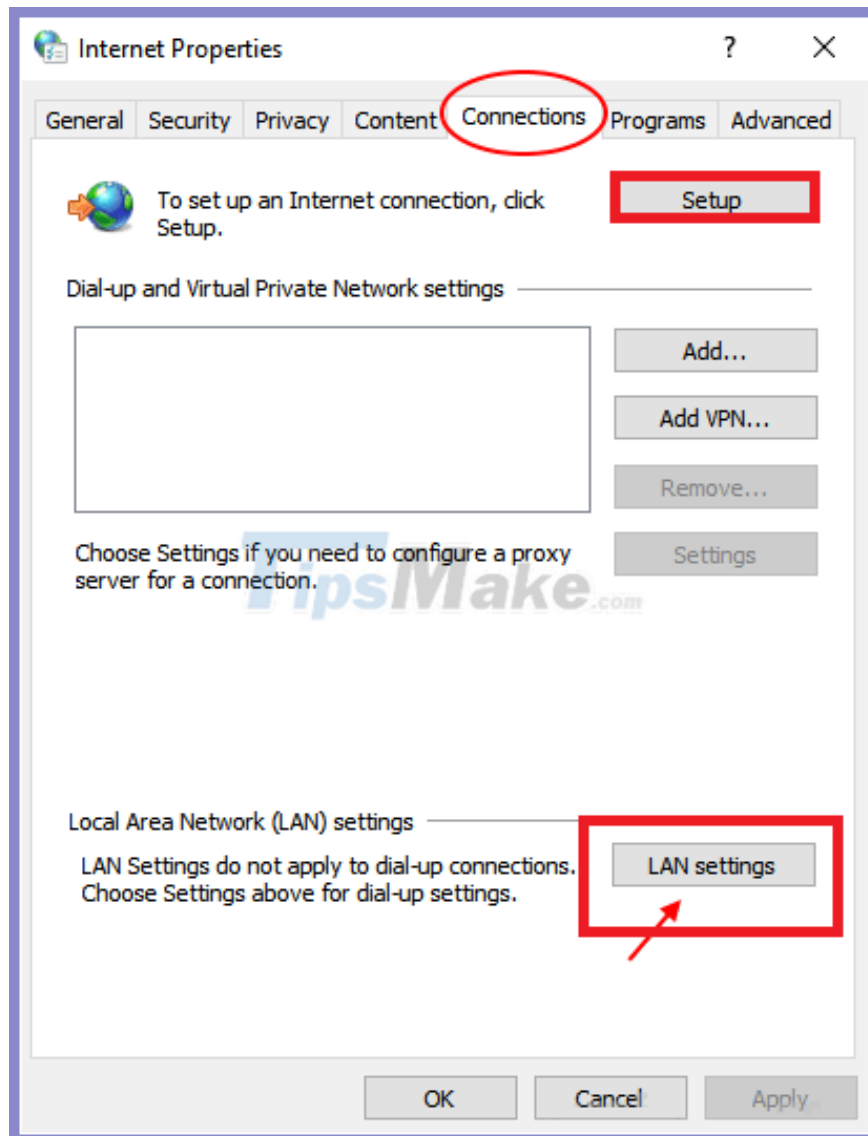
**Step 2:** Enter: *inetctl.cpl*

-> Click **OK**.

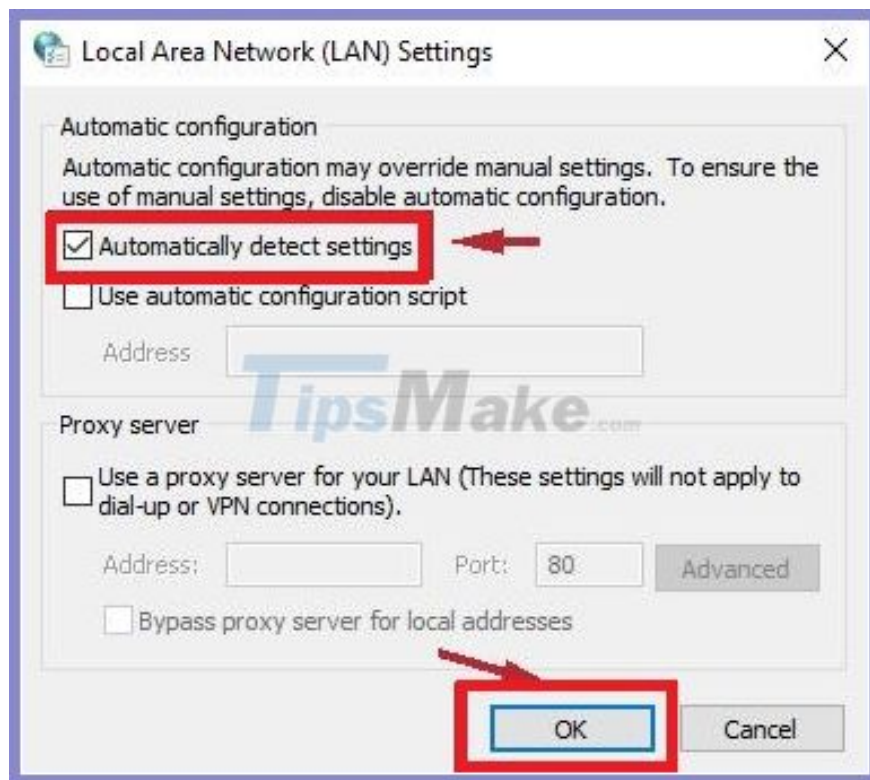


**Step 3:** Now, click on the **Connections** tab .

**Step 4:** Click **LAN settings**.



**Step 5:** Check whether **Automatically detect settings** is checked or not, if not, check it and then click **OK**.



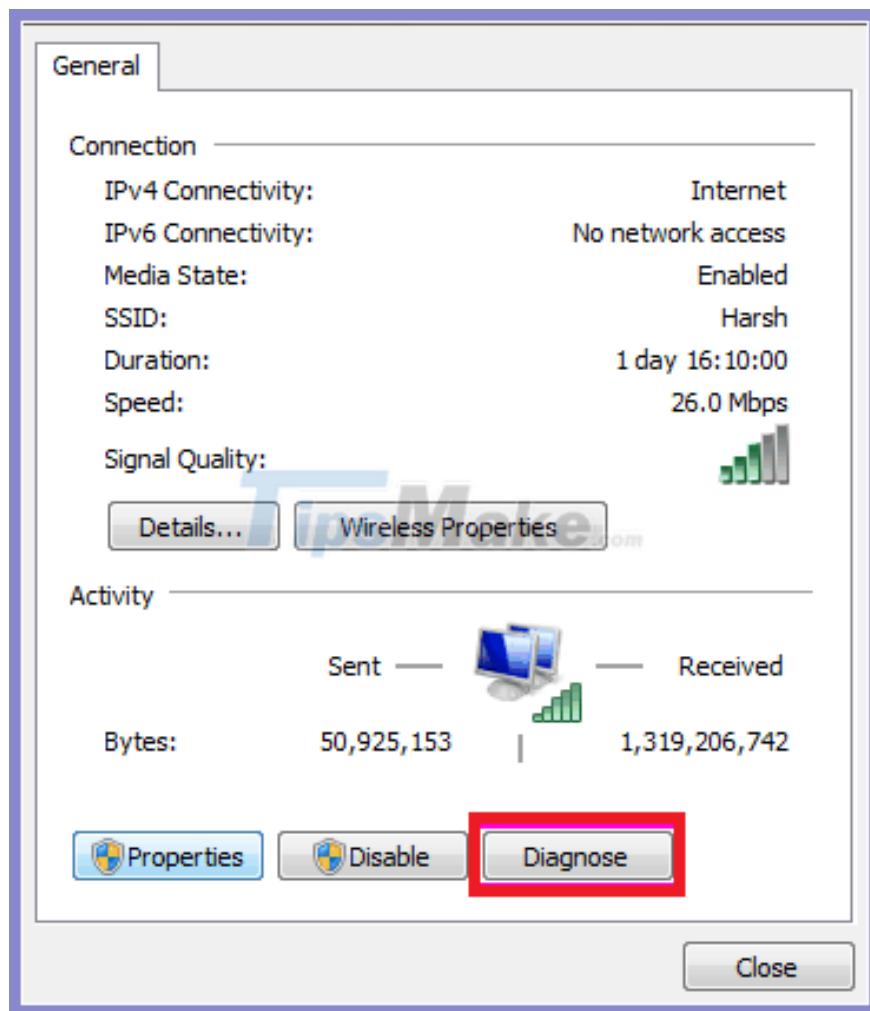
Finally, start Google Chrome to see if the **error site can't be reached** yet.

## **Method 4: Run Windows Network Diagnostics to fix Chrome problem**

Running Network Diagnostics will detect any network related issues and try to fix them if found. Here's how you can run network diagnostics:

**Step 1:** As mentioned in **method 2** , do the same to access the **Ethernet Status** window , perform *steps 1 to 3* .

**Step 2:** Click the **Diagnose** button . This will run the network debugging tool.



**Step 3:** After the diagnosis is complete, please proceed to disconnect and reconnect the Internet on your computer.

Finally, check if the **error site can't be reached** on the Google chrome browser has been fixed.

## Method 5: Disable the Experimental QUIC protocol in Chrome

With this method, you will have to turn off the feature called Experimental QUIC protocol in test to fix the problem. Now do the following steps:

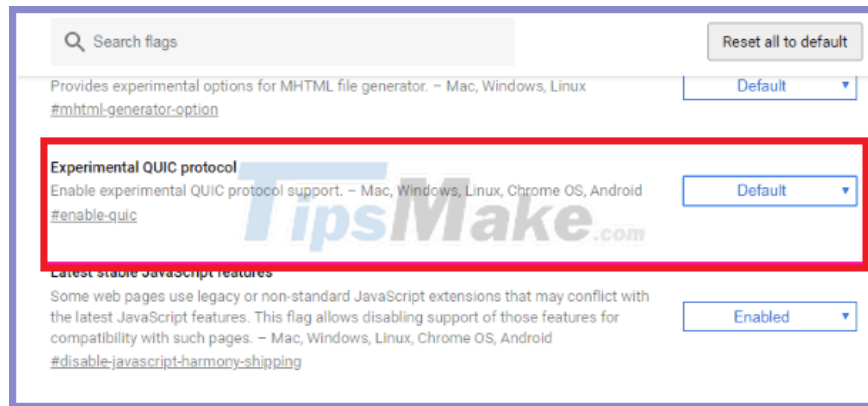
**Step 1:** In Chrome's address bar, type: *chrome://flags/* and press **Enter**.

**Step 2:** A full page of options will be displayed. Click **Ctrl + F** to open the site search feature.

-> Enter **Experimental QUIC protocol** then press **Enter** to search.

**Step 3:** You navigate to this item and switch the status to **Default** -> **Disable** to disable it.

After changing to all, restart the browser and check if the **error site can't be reached** on Google Chrome browser or not.

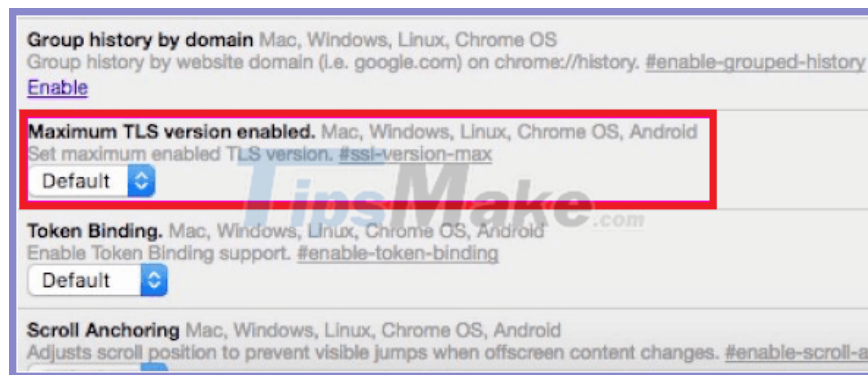


## Method 6: Change the maximum value of TLS

This is another feature in Chrome that you need to fix that can fix the error can't be reached. Please change the value of TLS according to the following steps.

**Step 1:** In Chrome's address bar, type: *chrome://flags/* and press **Enter**.

**Step 2:** Again press the key combination **Ctrl + F** to use the 'Find' tool in Chrome. Type *TLS* and navigate to **Maximum TLS version enabled**. From the drop-down menu, choose **TLS 1.3** instead of **Default**.



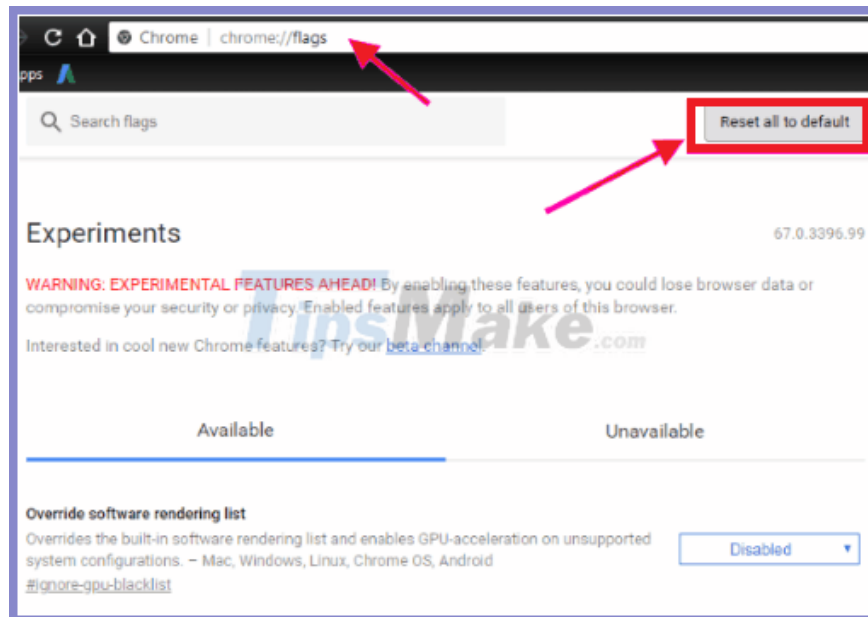
Restart Chrome browser and check if you have access to the Internet normally.

## Method 7: Reset (reset) Chrome settings

Resetting Chrome settings to default can also fix the problem. To reset, follow the steps below:

**Step 1:** In Chrome's address bar, type: *chrome://flags/* and press **Enter**.

**Step 2:** At the top of the page, click the **Reset all to default option** to set everything back to default.



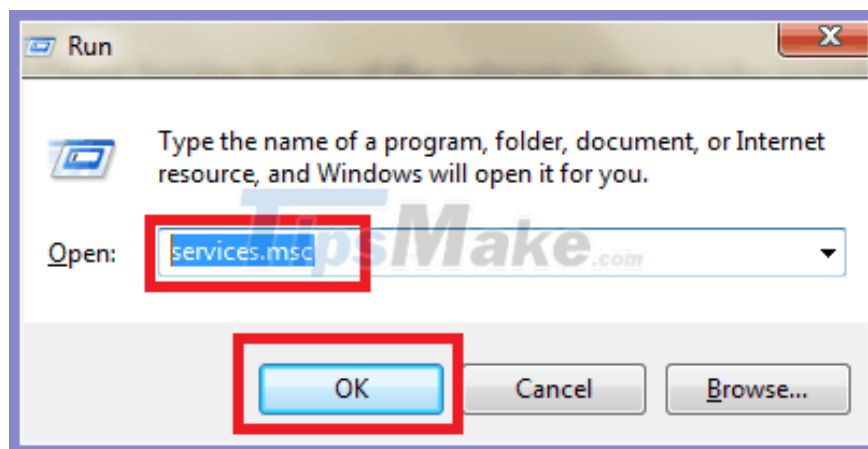
**Step 3:** Restart your browser to check the results.

## Method 8: Restart DNS Client Service

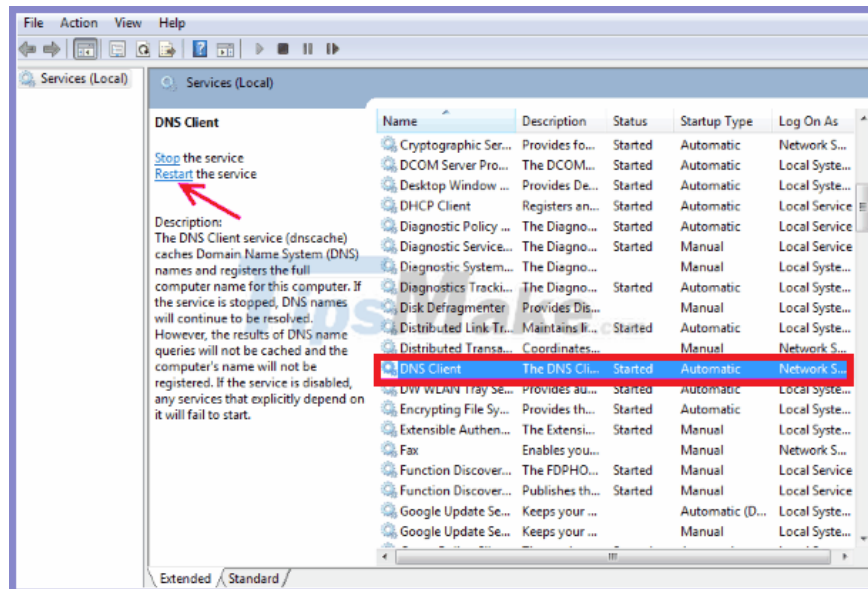
Restarting the DNS client service is one of the main steps to take to resolve the site can't be reached error. Please follow these steps:

**Step 1:** Open the Run box by pressing the key combination **Windows + R**.

In the Run window, enter the command: `services.msc` -> then press **Enter**.



**Step 2:** From the list of **Services** ( *Services* ), find the **DNS Client** and select it. Then click **Restart** to restart this service, right on the left side of the window.



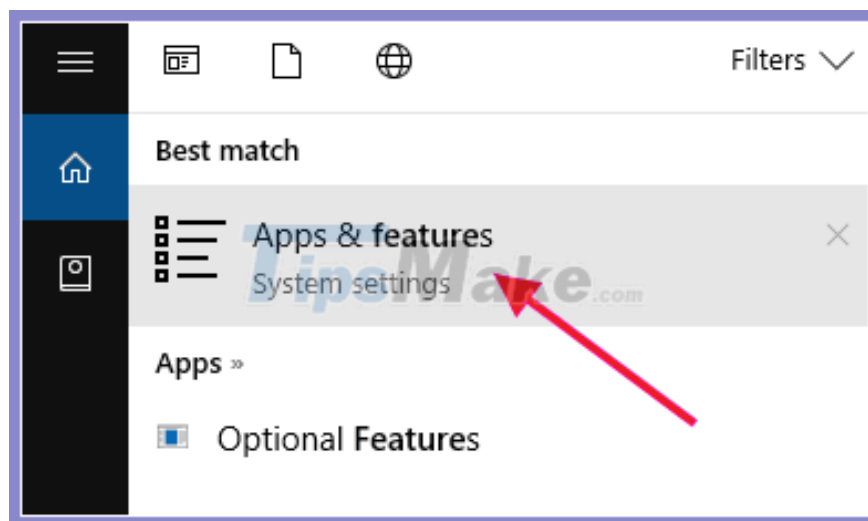
Once the **DNS Client** service has restarted, check to see if the websites are accessed as usual. If not, try number 9.

## Method 9: Reinstall Chrome browser

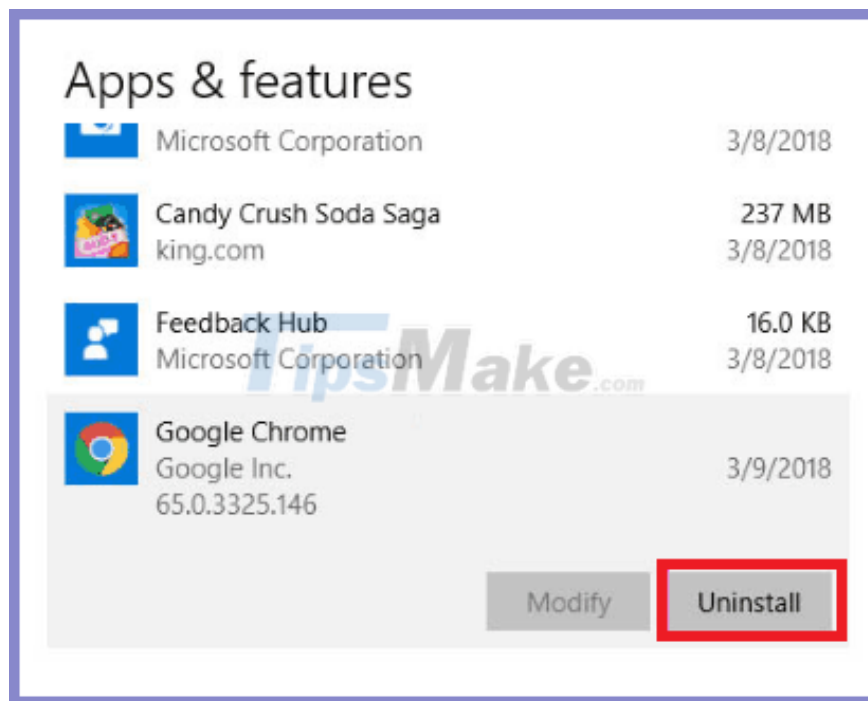
The last resort is to reinstall Chrome on your PC / Laptop. Here's how to do it:

**Step 1:** You press the key combination Windows + Q to open the search dialog.

Enter: *app & features* and press select.



**Step 2:** Find Google Chrome in the list, left-click on it and click **Uninstall** ( *Uninstall* ).



**Step 3:** After uninstalling, open another web browser for example Internet Explorer or Microsoft Edge . visit the Google homepage and download the latest version.

Then you install and launch the program to check if the **error site can't be reached** was fixed or not. If not, try the last one below.

## Method 10: Use an antivirus program



If, after applying all the above methods, still **error site can't be reached** on Google Chrome browser, chances are your computer has been infected.

You finished reading the article "**How to fix the error site can't be reached on the Google Chrome browser**" edited by the [TipsMake](#) team. We hope this article has provided you with many useful tech tips and tricks. You can search for similar articles on tips and guides. Thank you for reading and for following us regularly.

---

