

# How to fix the error of not printing the Word file

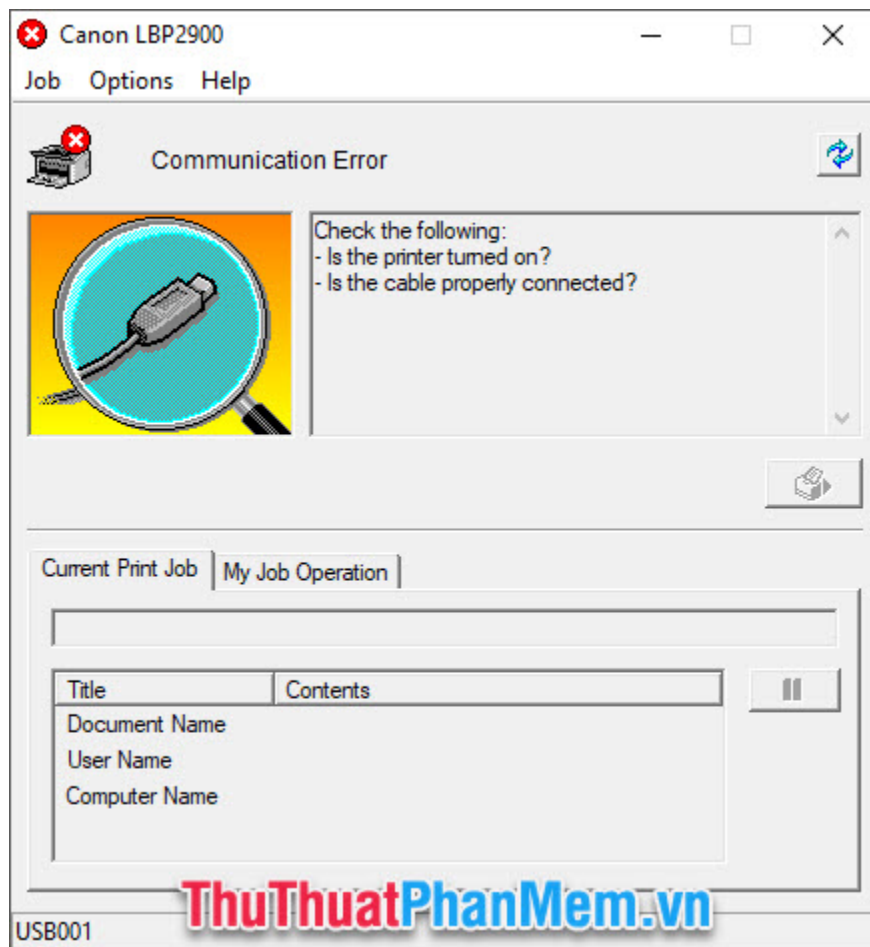
In the process of using the printer, you will not be able to avoid unexpected errors. In which you may not print your Word file. To help you identify and fix related issues, TipsMake.com will guide you in the following procedure article.

In the process of using the printer, you will not be able to avoid unexpected errors. In which you may not print your Word file. To help you identify and fix related issues, TipsMake.com will guide you in the following procedure article.



## 1. Fix hardware errors that cannot print Word files

### 1.1. The printer cannot be connected



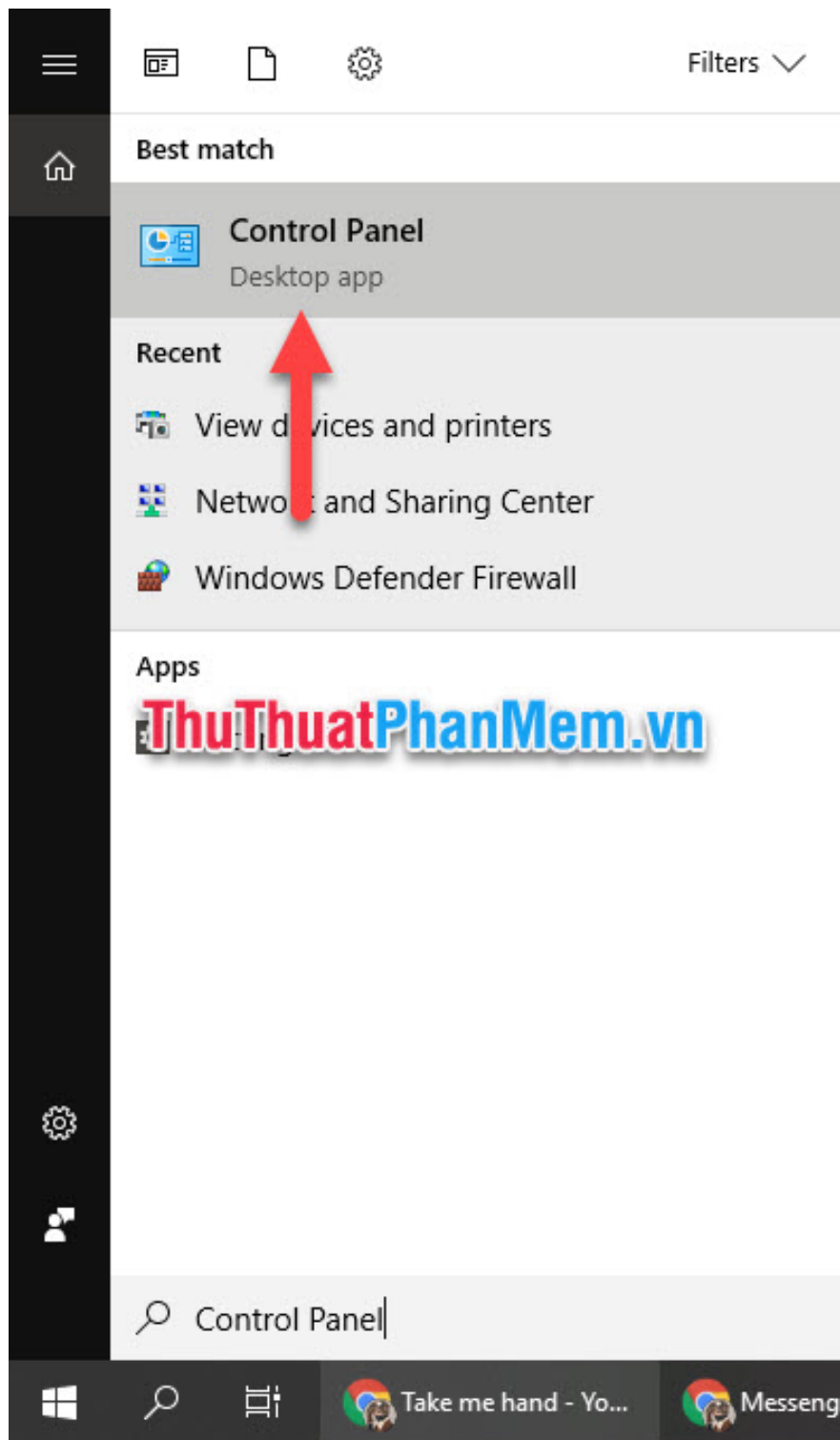
When you execute the print job but your printer is not responding, the connection between the computer and your printer has encountered an error. In such error cases, you need to check the connection with the printer.

1. Check that the printer is turned on.
2. Check if the cable connected to the printer is loose.
3. Check if the printer cable is damaged.
4. Check if your printer is broken. If it is broken, buy a new one.

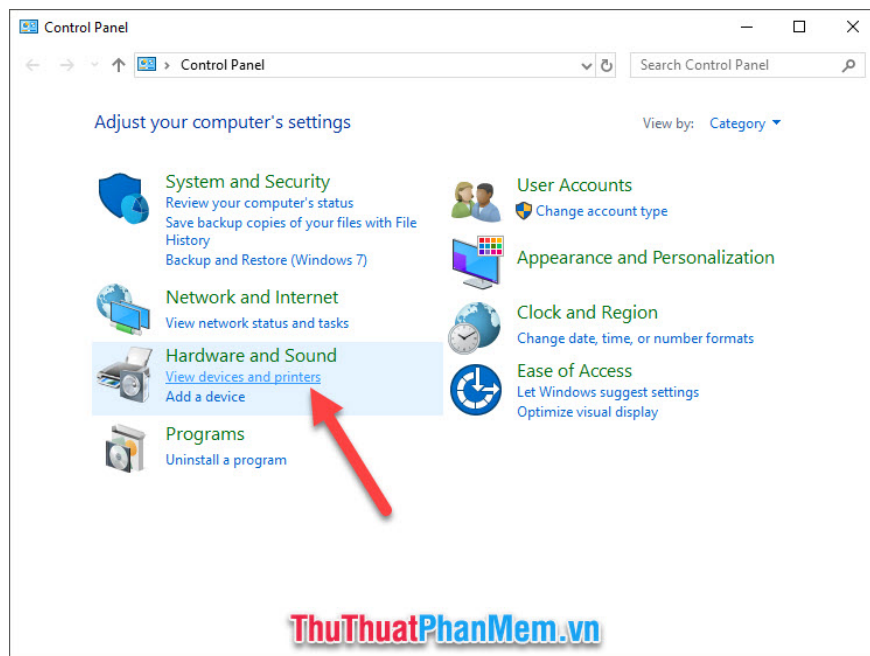
## 1.2. Error comes from driver software

If it is not the cable fault but related to the printer driver software (driver), you can check the error by following these steps:

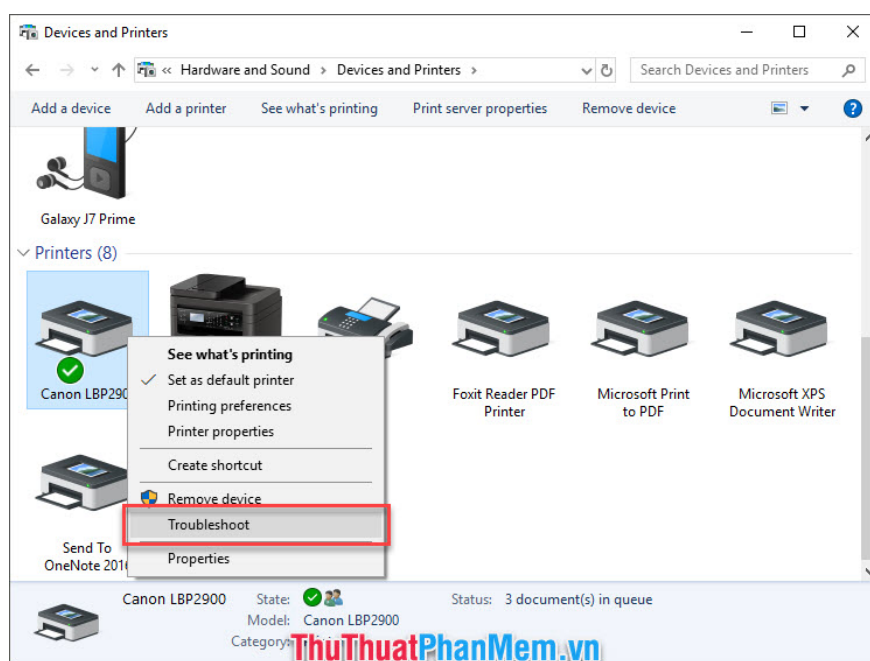
**Step 1:** You need to open the **Control Panel** , you can open the **Control Panel** in many ways from clicking the **Control Panel** icon on the screen to finding it in the Windows **Search** section .



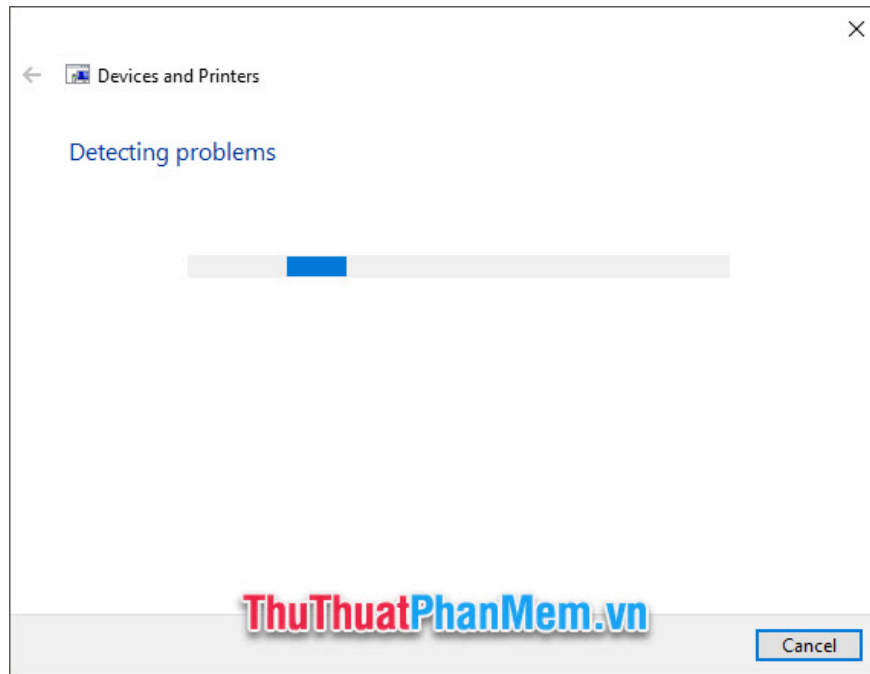
**Step 2:** After you open the **Control Panel** , and to view **View by** that **category** . Then click on **View devices and printers** .



**Step 3:** Right-click on the printer you are connecting and select **Troubleshoot** .



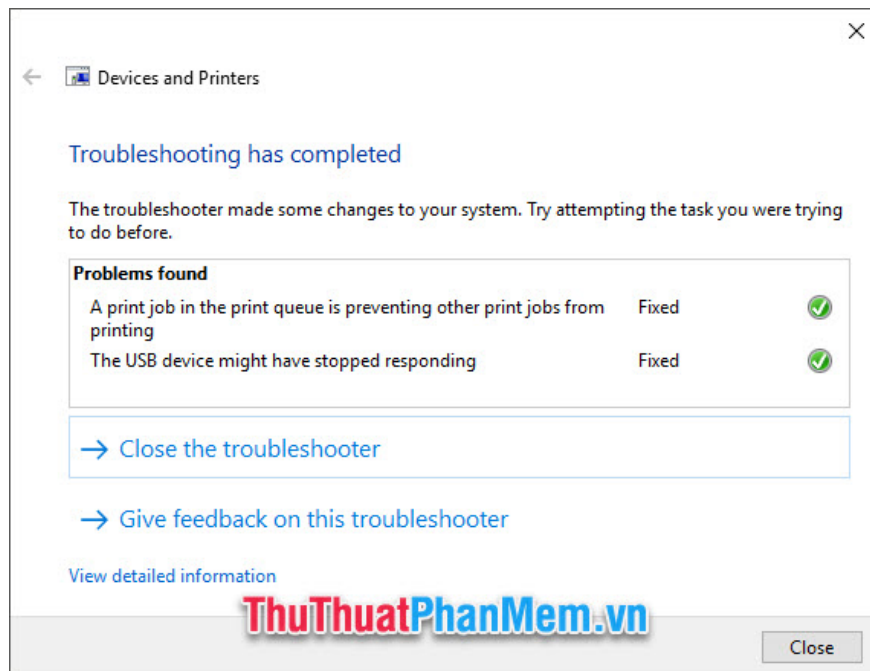
Then you wait for your computer to check for errors related to your printer.



**Step 4:** After checking the error, you will know what your printer's error is and Windows has also fixed it (shown Fixed).

As shown below, two errors have been mentioned:

- *A print job in the print queue is preventing other print jobs from printing .*
- *The usb device might have stopped responding .*



Finally, click **Close the troubleshooter** to close the error correction function window.

## 2. Fix unprintable errors due to Word software

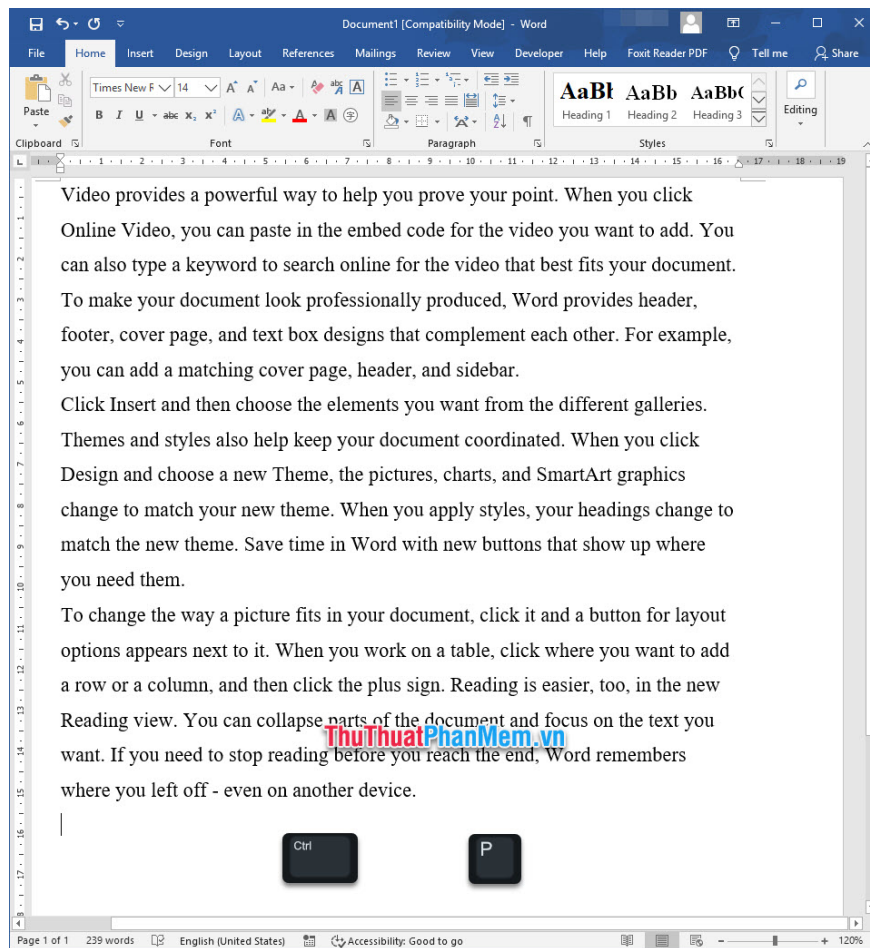
### 2.1. Error from isolated Word file

Sometimes you can't print text because of errors from separate Word files.

To check if the .docx file itself is broken or similar, you can create a new Word file to check if the document is also corrupted.

Tip: Create a new Word file quickly using the Ctrl N key combination and use the = rand (3,5) command to create a random paragraph three paragraphs of five sentences each.

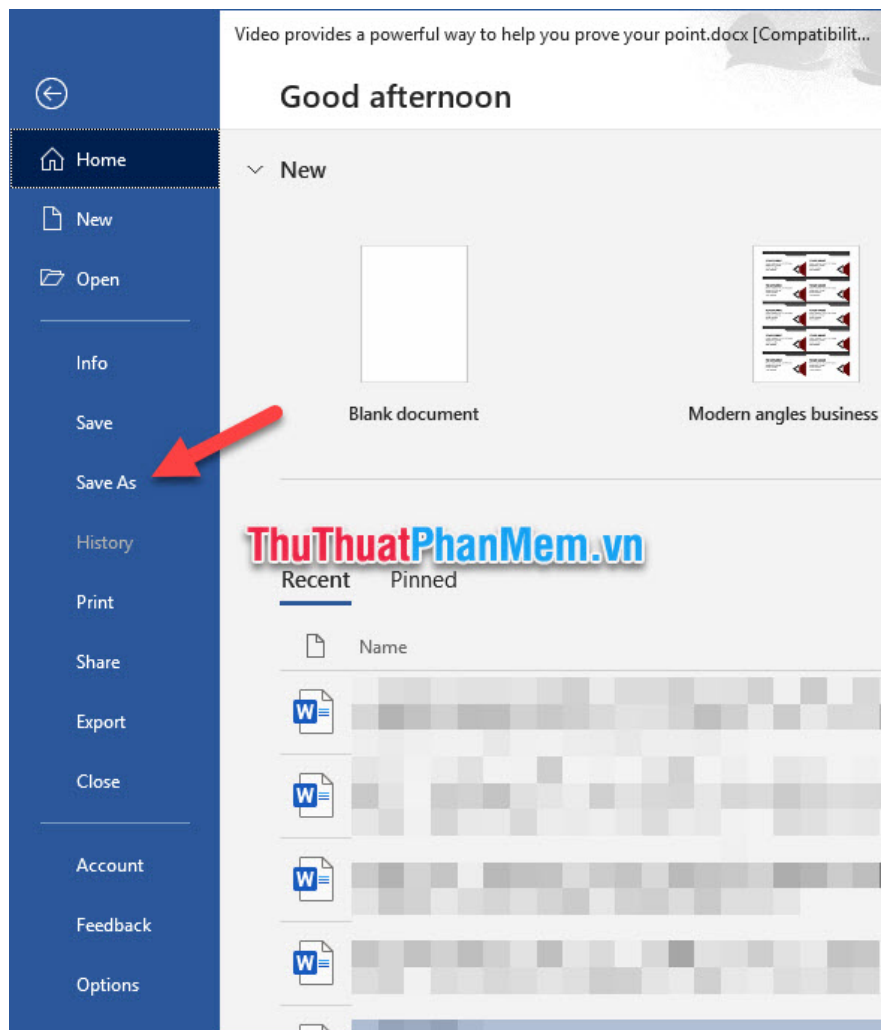
Then use **Ctrl + P** to start the print job.



If your printer is still functioning properly, it means that your document has been corrupted and cannot be printed.

You can fix this by saving your document file as another file.

Click to open the **File** ribbon on the toolbar and select **Save As** in the **File** list that appears. Or you can use the **F12** keyboard shortcut with the same function.

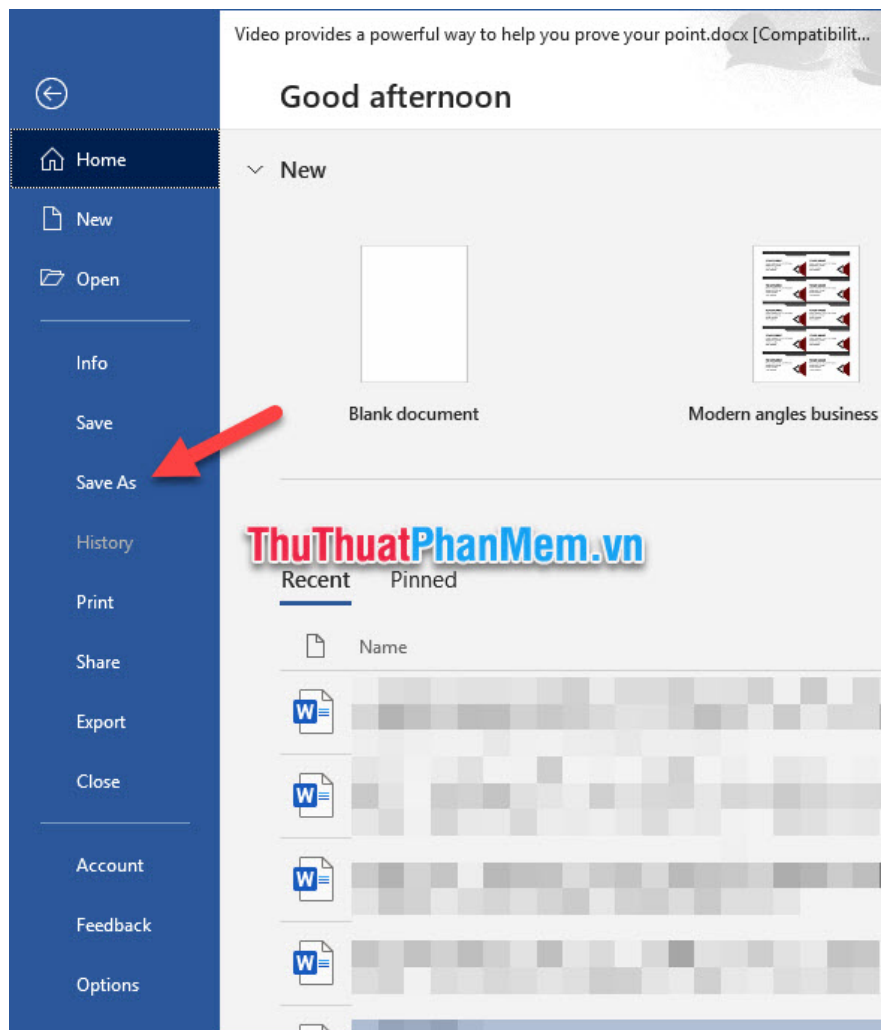


After saving a new file, you can print your Word document as usual.

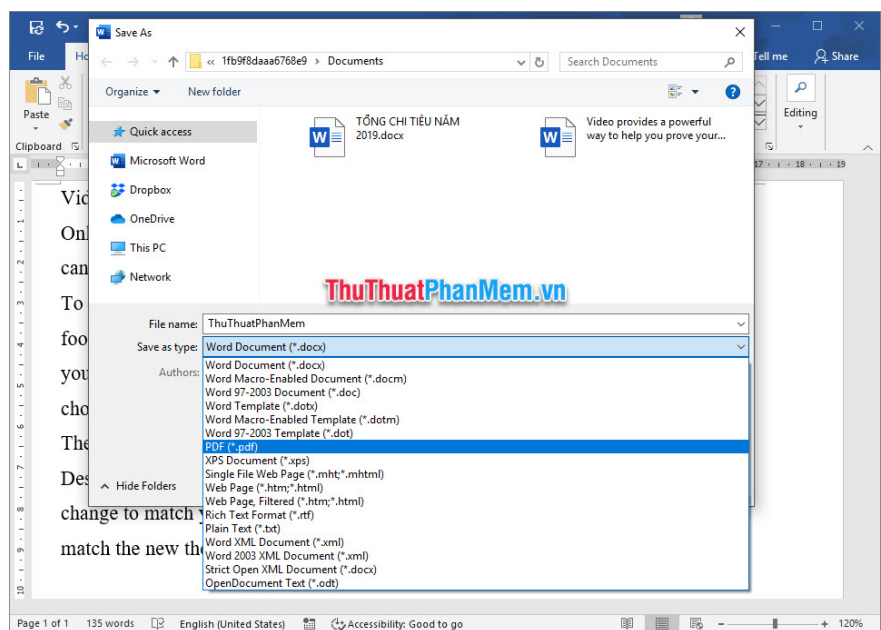
## 2.2. Convert to PDF file to print

If all of your Word files are not printable as usual, your Word software may be corrupted. In this case, it's best to uninstall Word software and reinstall it. But if you need to print the document too quickly, you can choose to convert the Word file into a PDF file to print.

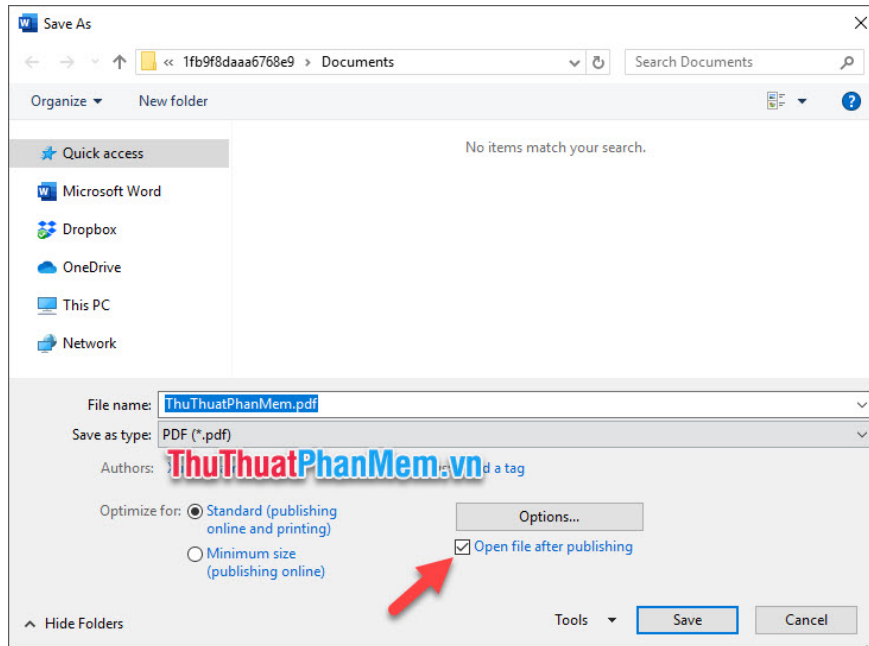
Click open the **File** ribbon on the toolbar and select **Save As** in the **File** list that appears. Or you can use the **F12** keyboard shortcut to perform the same function.



After the **Save As** option panel is displayed, change the **Save as type** to **PDF (\*.pdf)** and then select the location to save the file.

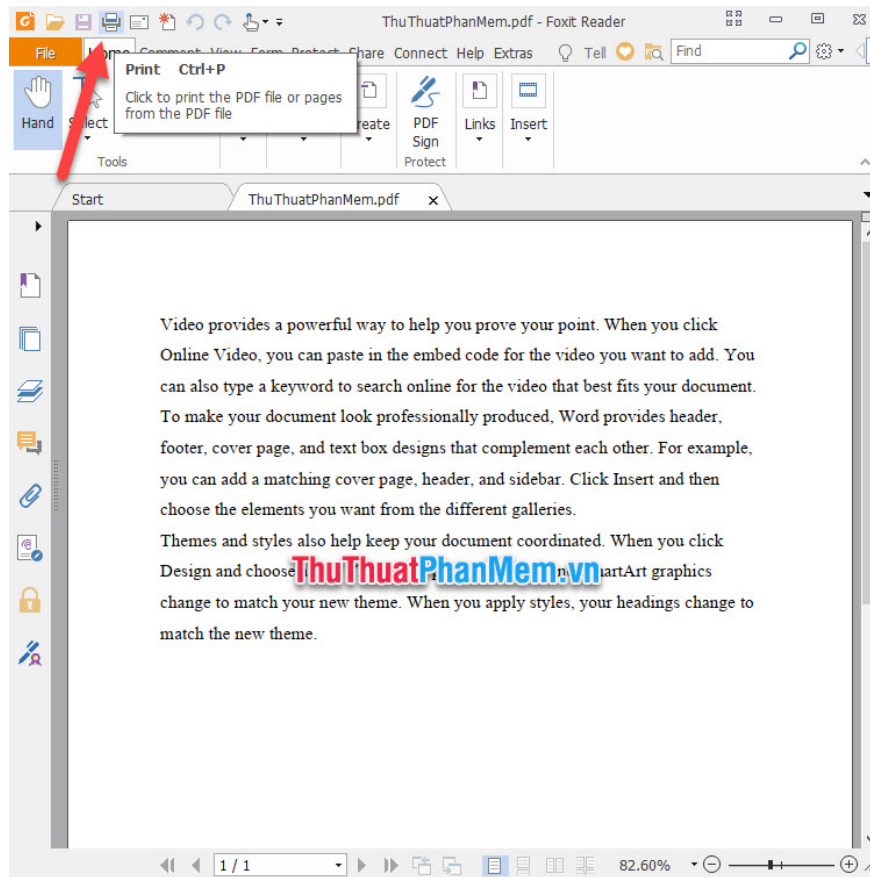


Then select the settings for the newly created PDF file, if used for immediate printing, you should leave the **Standard** mode , create a trace before **Open file after publishing** to be able to open the file immediately after saving. Click **Save** to finish.



The document file is opened in the PDF reader, you can print the document with this reader. Usually PDF readers will display the print icon in a fairly conspicuous place in the interface.

Or you just need to use the familiar key combination Ctrl P and be able to open the print interface as normal.



Thank you for following the article How to fix the error of not printing the Word file of TipsMake.com us. Hopefully the article has given you all the necessary knowledge to overcome the inability to print your document file. I wish you successful implementation!

You finished reading the article "**How to fix the error of not printing the Word file**" edited by the [TipsMake](#) team. We hope this article has provided you with many useful tech tips and tricks. You can search for similar articles on tips and guides. Thank you for reading and for following us regularly.