

# How to fix the error is not connected to the patch when updating the legendary Alliance

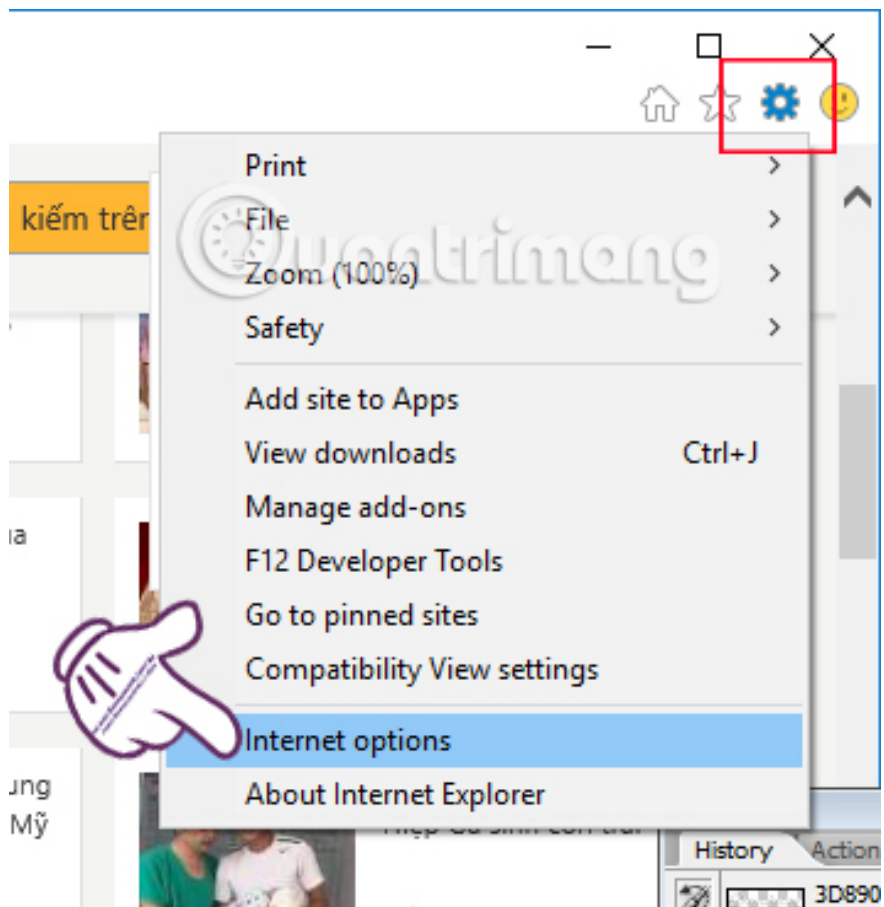
Some gamers after updating the legendary Alliance encountered an error not connected to the patch and asked to check the Internet or come back later. So how to fix this situation?

The legendary alliance is one of the hottest games and attracts a large number of gamers worldwide. Each update will bring new experience to the game players. However, some gamers after updating the error occur and in which there are errors that cannot connect to the patch and need to check the connection to the Internet or access again later. Many people have tried to change static IPs or reset DNS but still have no results. So how to fix this error?

In this article, we will guide gamers to fix bugs that are not connected to the patch when updating the Legend Alliance, which is to reinstall Proxy server in IE. Therefore, you can only do with Internet Explorer and the operation will not work with Chrome and Firefox.

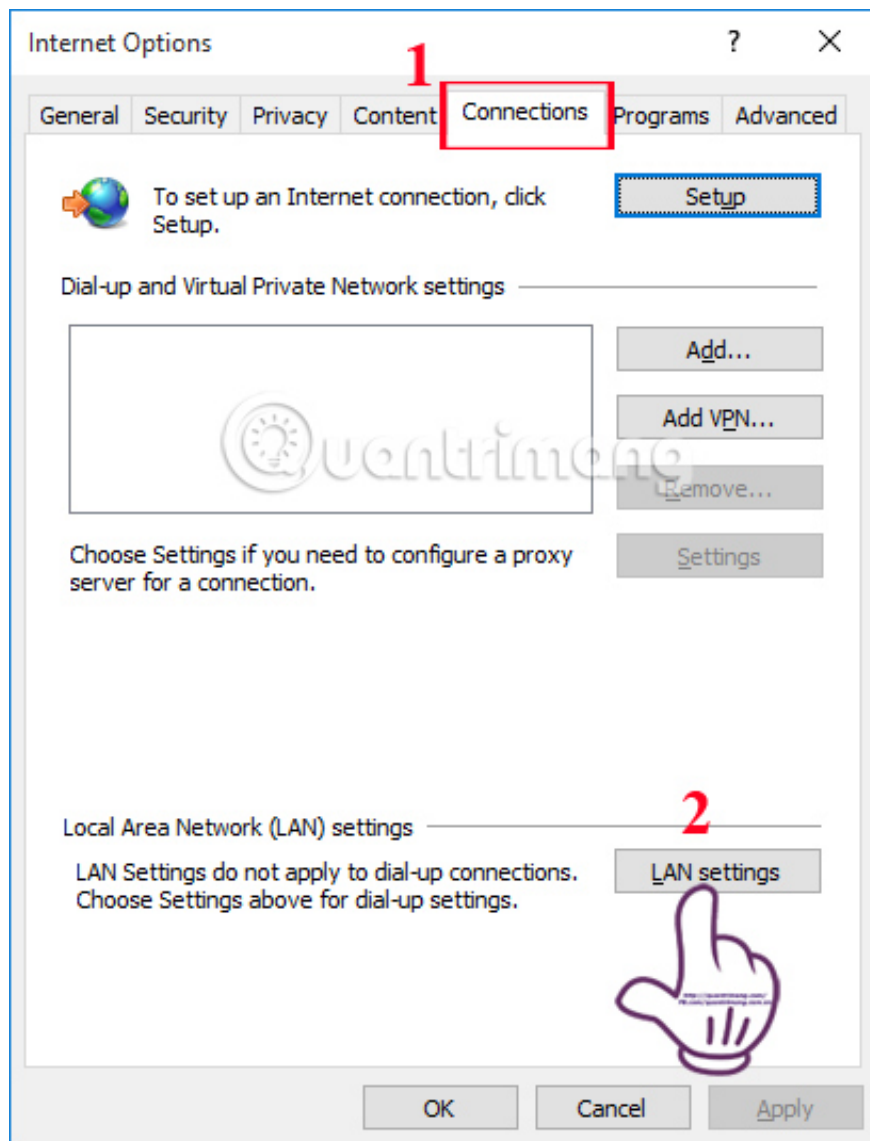
## Step 1:

You **access Internet Explorer** on your computer. At the main interface, we click on **the gear icon** or click Tools and select **Internet options** .



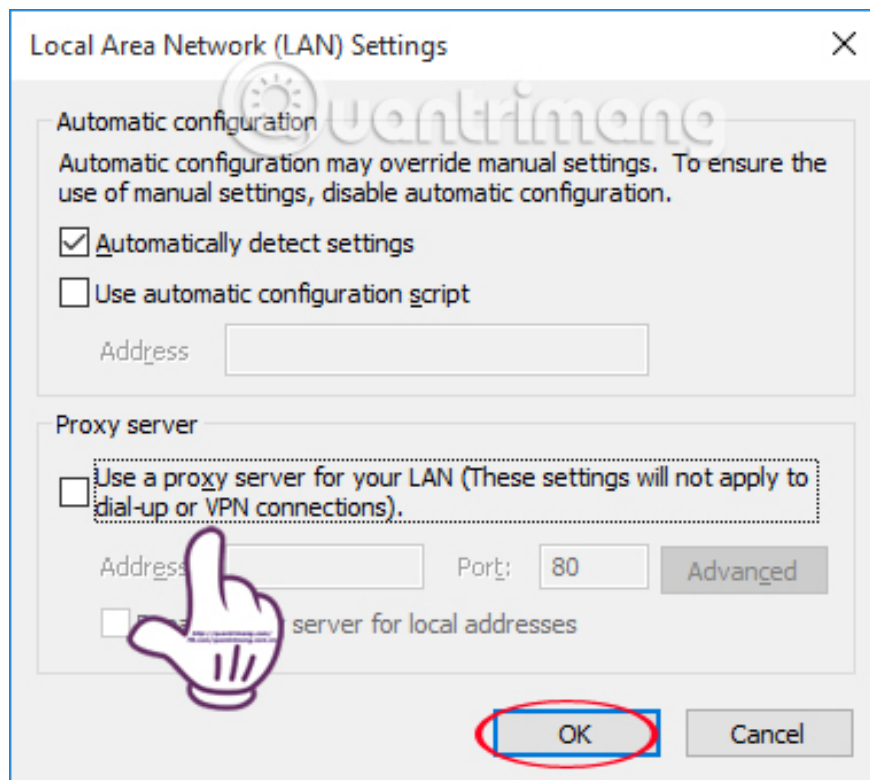
## Step 2:

In the Internet Options interface, click the **Connections** tab and then click on **LAN settings** .



### Step 3:

At the Local Area Network (LAN) Settings interface, under **Proxy Server**, we will **Uncheck the box Use a proxy server for your LAN (These settings will not apply to dial-up or VPN connections)** . Finally click **OK** to save the new setting.



The rest of that, you just need to turn off the browser and restart the computer to correct the error. Once accessed again, the gamers will no longer have an error status that is not connected to the patch when updating the legendary Alliance as above.

### Refer to the following articles:

1. How to register a Steam account on your computer?
1. Which type of gun should you use in Legendary Campaign?
1. How to make things in Minecraft games

### I wish you all success!

You finished reading the article "**How to fix the error is not connected to the patch when updating the legendary Alliance**" edited by the [TipsMake](#) team. We hope this article has provided you with many useful tech tips and tricks. You can search for similar articles on tips and guides. Thank you for reading and for following us regularly.