

How to fix the error can not access YouTube

How to fix the error can not access YouTube. Youtube has a server located abroad so sometimes we encounter the error of not being able to access Youtube. Today, the Software Tips will guide you on how to fix the error cannot access YouTube.

Youtube is now a very large and popular social network for all ages, Youtube will help you have moments of entertainment after long time of work and study. But YouTube has a server located in a foreign country, so we sometimes encounter the error of not being able to access Youtube. Today, the Software Tips will guide you on how to fix the error cannot access YouTube.



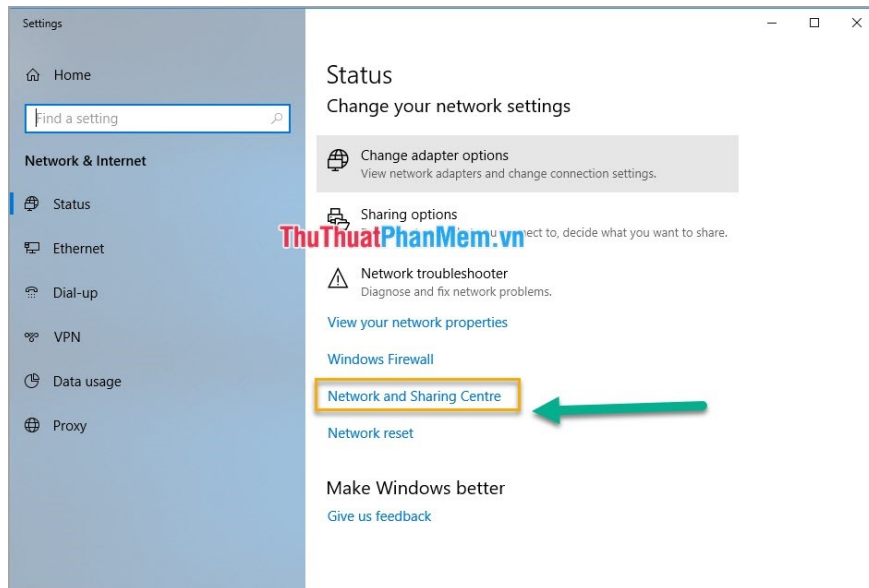
Reset network connection

Network connection is also a big reason for not being able to access YouTube due to the bandwidth congestion or the service provider's connection and transmission problems affecting the access process. Reconnecting the Internet helps your computer access the service provider's connection and clears out old network caches. How to reset the network on the computer is also very quick, you proceed to do the following:

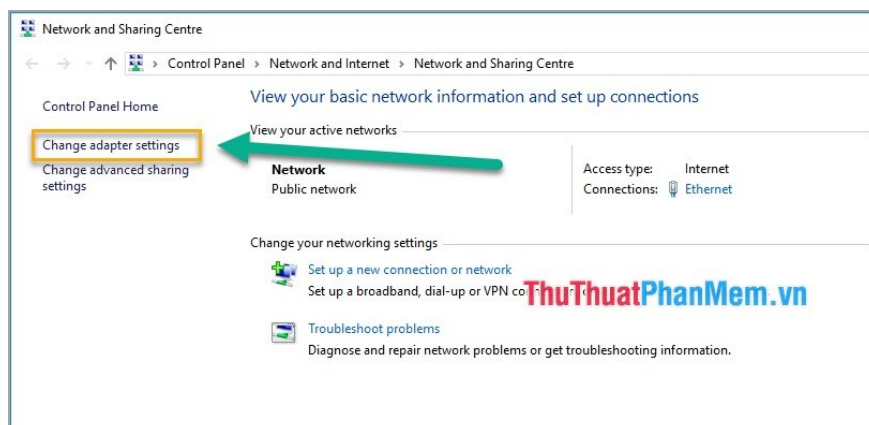
Step 1: Click on the computer icon on the Taskbar and select **Network & Internet Settings** .



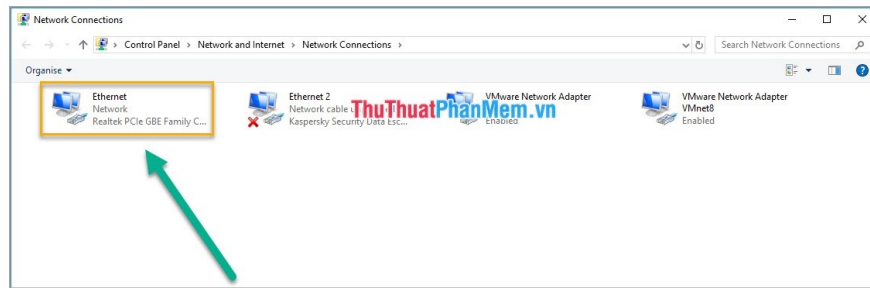
Step 2: Next, a new window will pop up, select **Network and Sharing Center** .



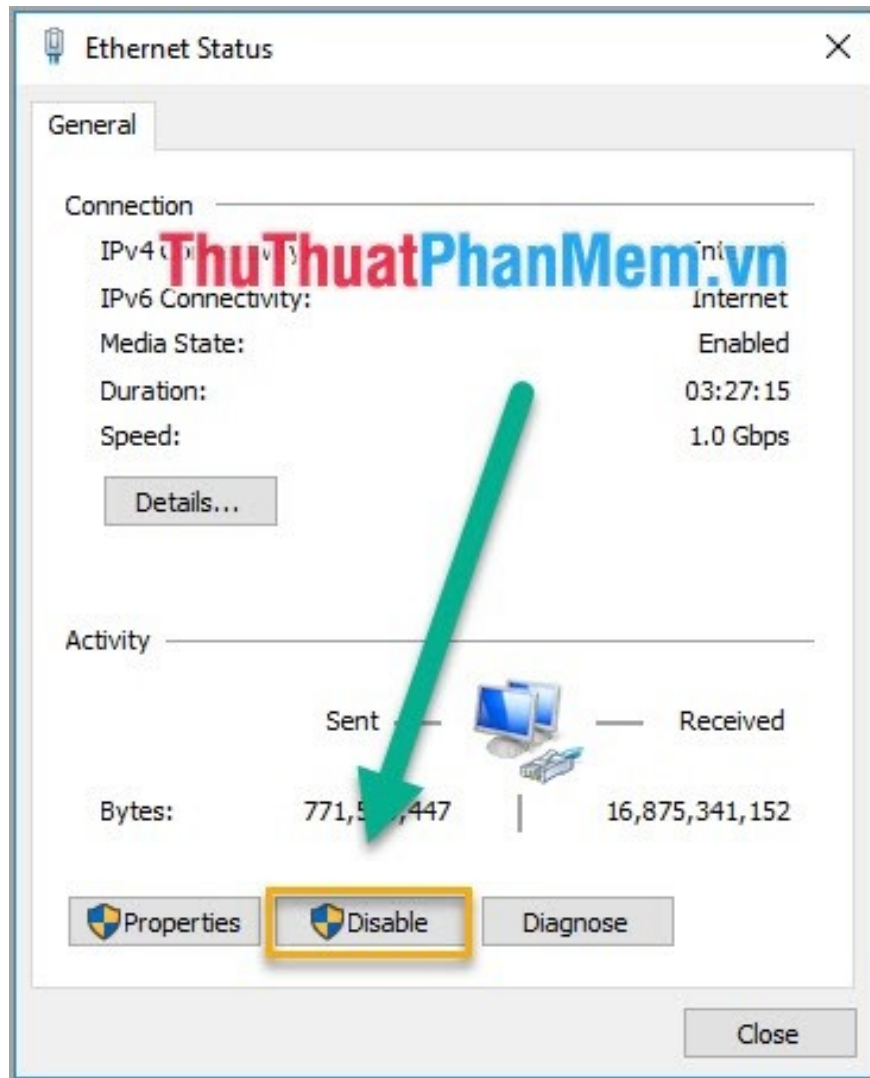
Step 3: Then, the **Network and Sharing Center** window opens and proceed to select **Change adapter settings** .



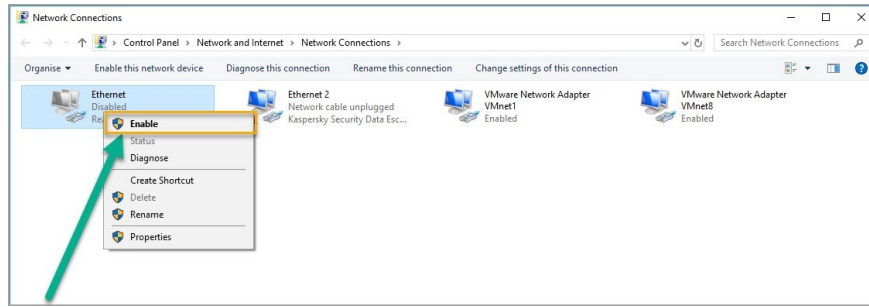
Step 4: By this point you need to identify the main transmission of the Internet, usually will be called **Ethernet** . You double-click to open the installation window.



Step 5: When **Ethernet Status** window is opened, select **Disable** to disconnect the network. Then close this window.

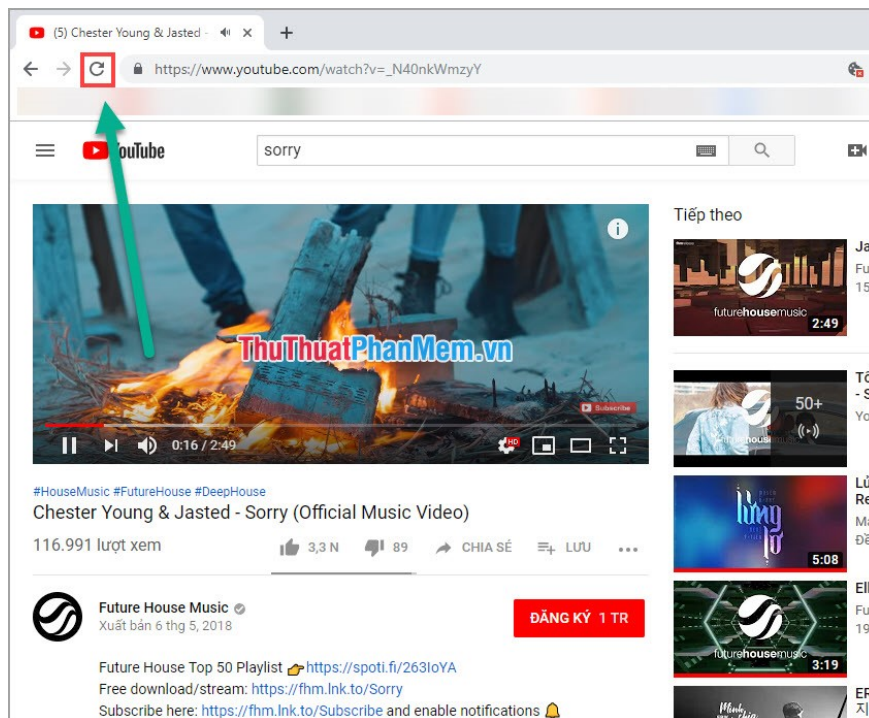


Step 6: At this point, your Ethernet icon is gray. You right-click on the icon and select **Enable** to reconnect to the network.



Reload the Youtube page

Sometimes, the browser has an error that affects the transmission line or data on the system. It could also be due to the loss of Internet usage during the browser and the browser can not reconnect to the Internet itself, affecting the connection. You just need to press **F5** or click the reload icon to finish.



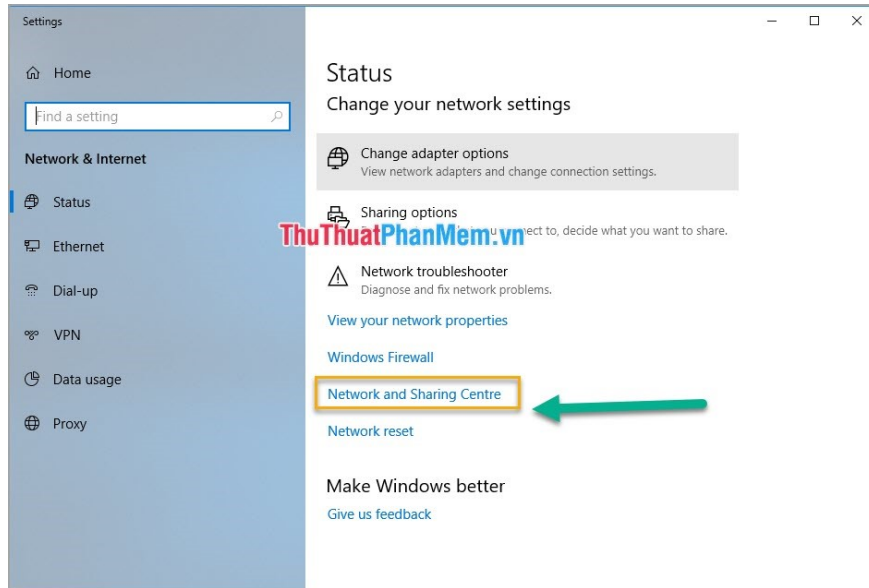
Change the DNS address

If your service provider blocks YouTube, changing the DNS address will help you overcome that problem and can access YouTube again and greatly improve the speed. To change the DNS address you do the following:

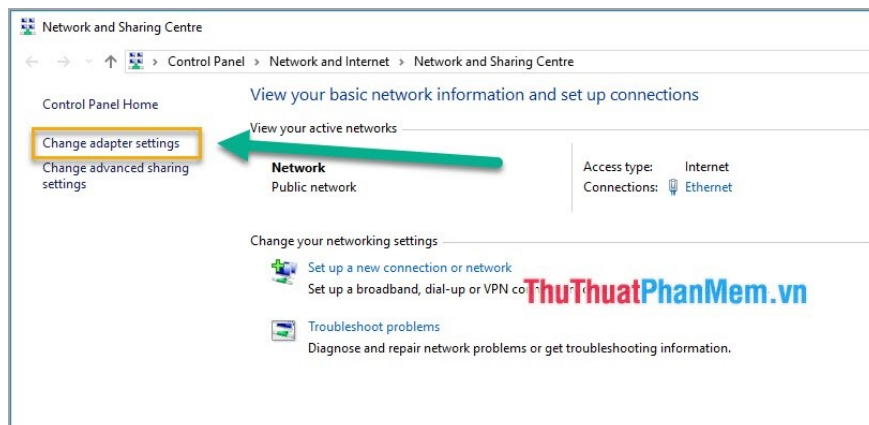
Step 1: Click on the computer icon on the **Taskbar** and select **Network & Internet Settings** .



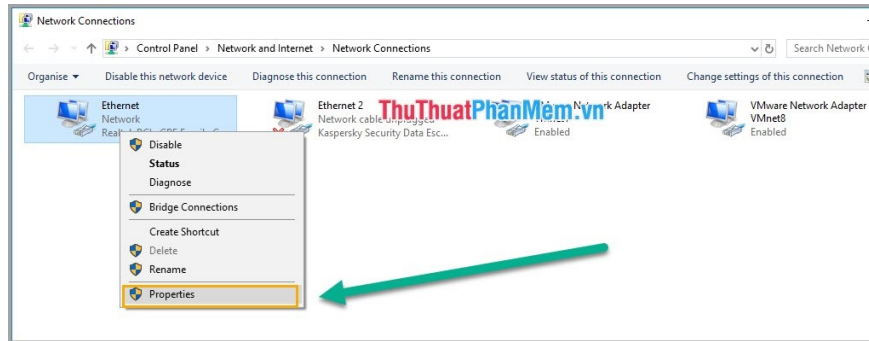
Step 2: Next, a new window will pop up, select **Network and Sharing Center** .



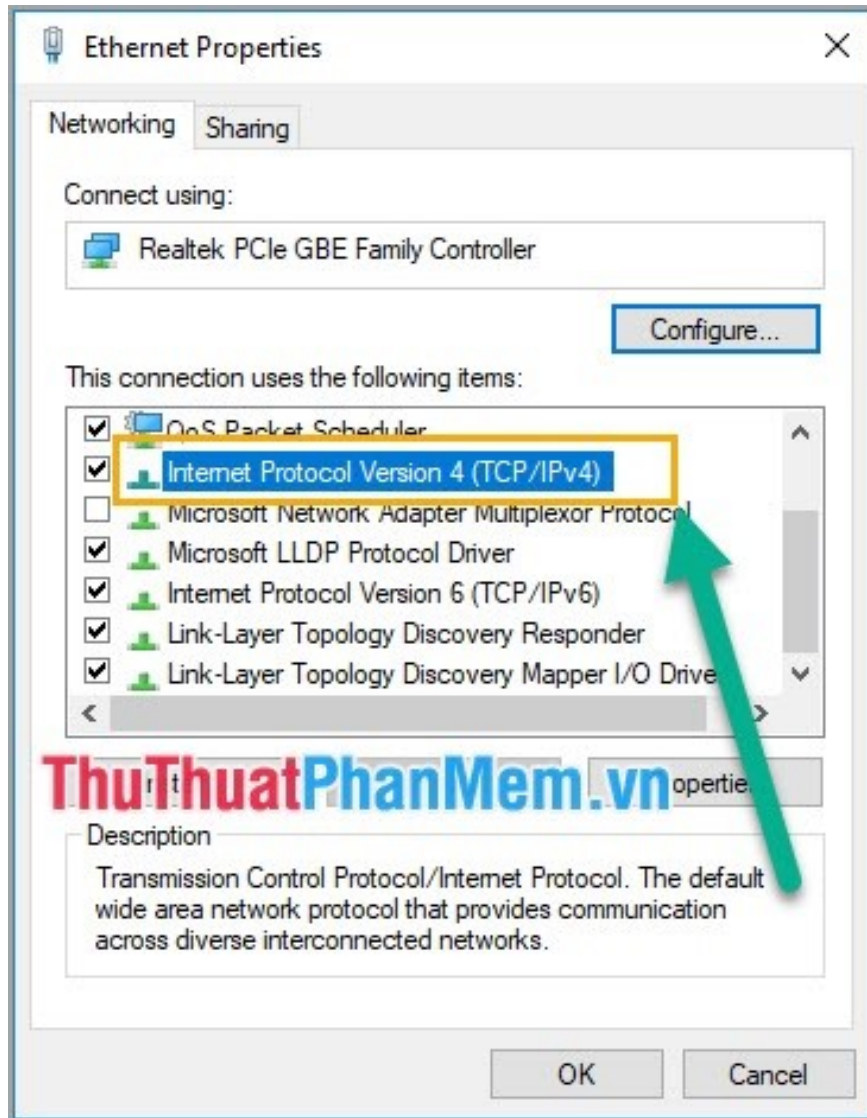
Step 3: Then, the **Network and Sharing Center** window opens and proceed to select **Change adapter settings**



Step 4: By this point you need to identify the main transmission of the Internet, usually will be called **Ethernet** . Right-click on the icon and select **Properties** to install.



Step 5: Next, double click on **Internet Protocol Version 4 (TCP / Ipv4)** .



Step 6: You select **Use the following DNS server addresses** and enter the DNS address.

Some common DNS:

Google DNS:

Preferred DNS server: 8.8.8.8

Alternate DNS server: 8.8.4.4

Norton ConnectSafe:

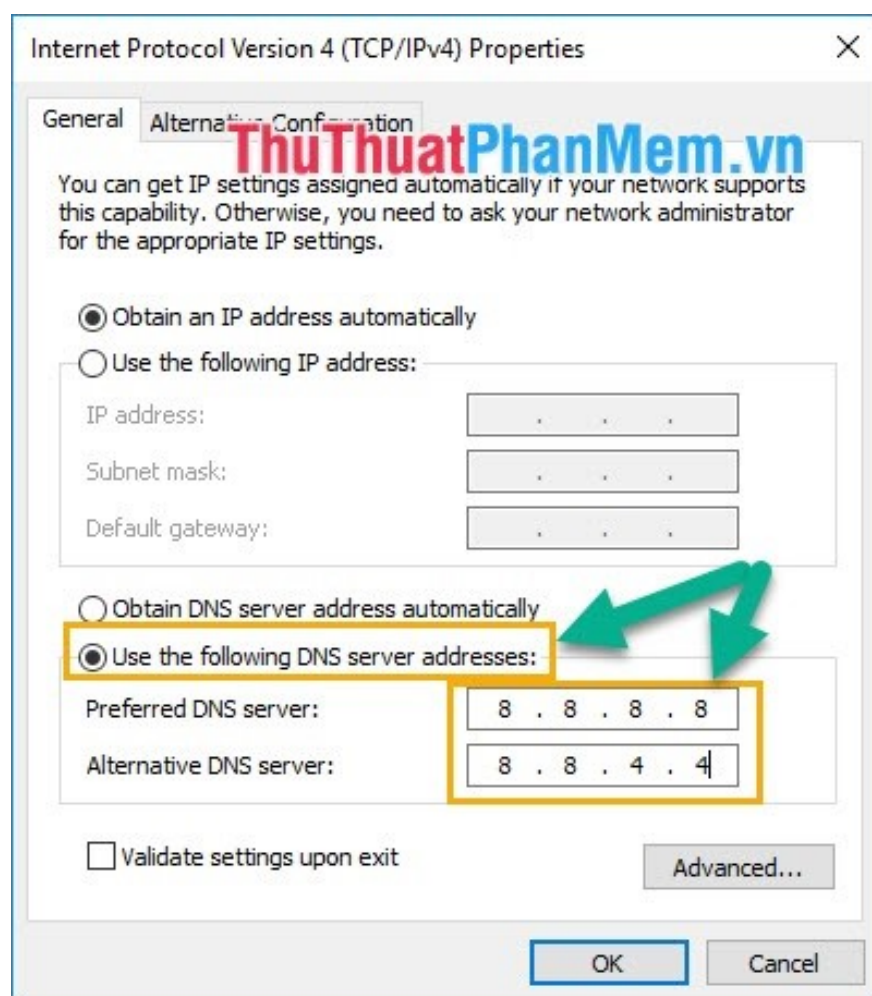
Preferred DNS server: 199.85.126.10

Alternate DNS server: 199.85.127.10

DNS FPT:

Preferred DNS server: 210.245.24.20

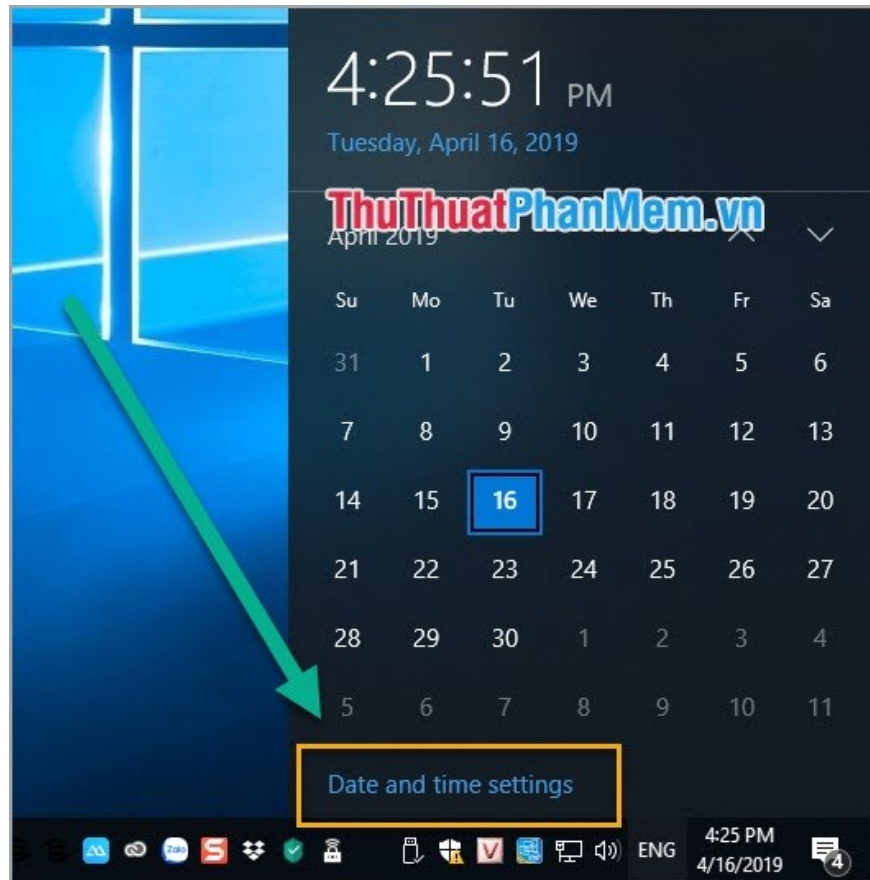
Alternate DNS server: 210.245.24.22



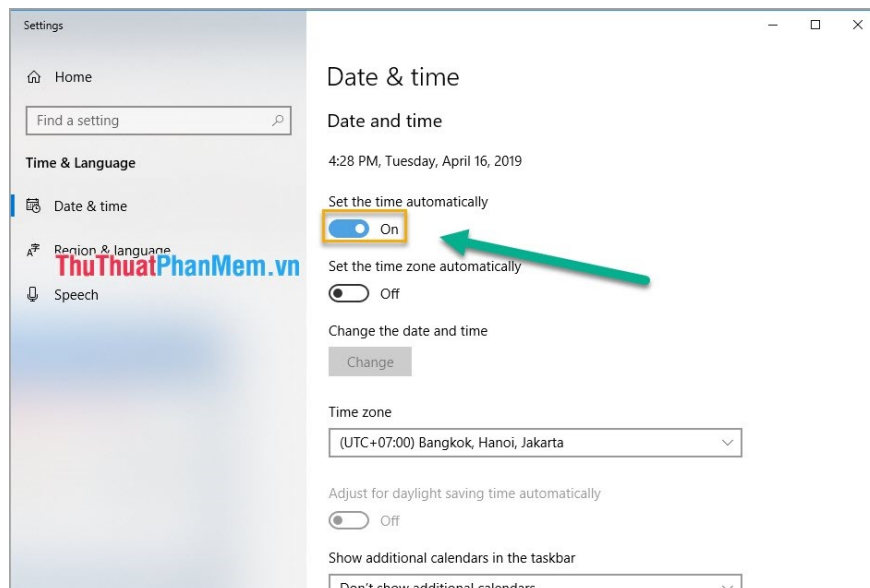
Update the computer's date and time

The date and time will affect the real-time connection of the Internet and use of various services. If the time is incorrect, the provider will not recognize the access device.

Step 1: You proceed to click on the **Date and Time** on the Taskbar and then select **Date and Time Settings** .

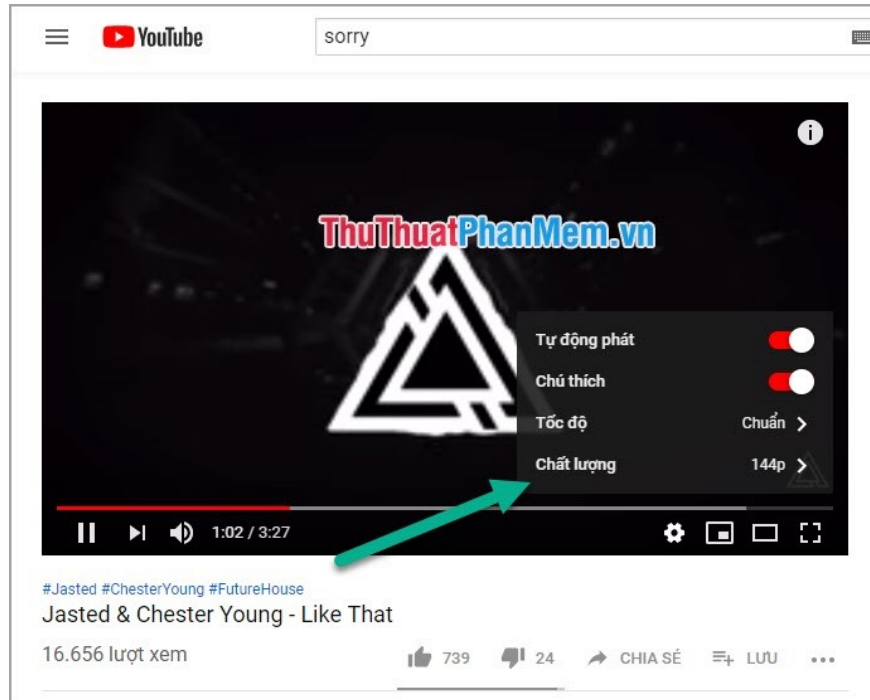


Step 2: Then, you select **Set the time automatically** and turn **ON** to let the system automatically retrieve data on the Internet and update the date and time according to the area of the device being accessed.



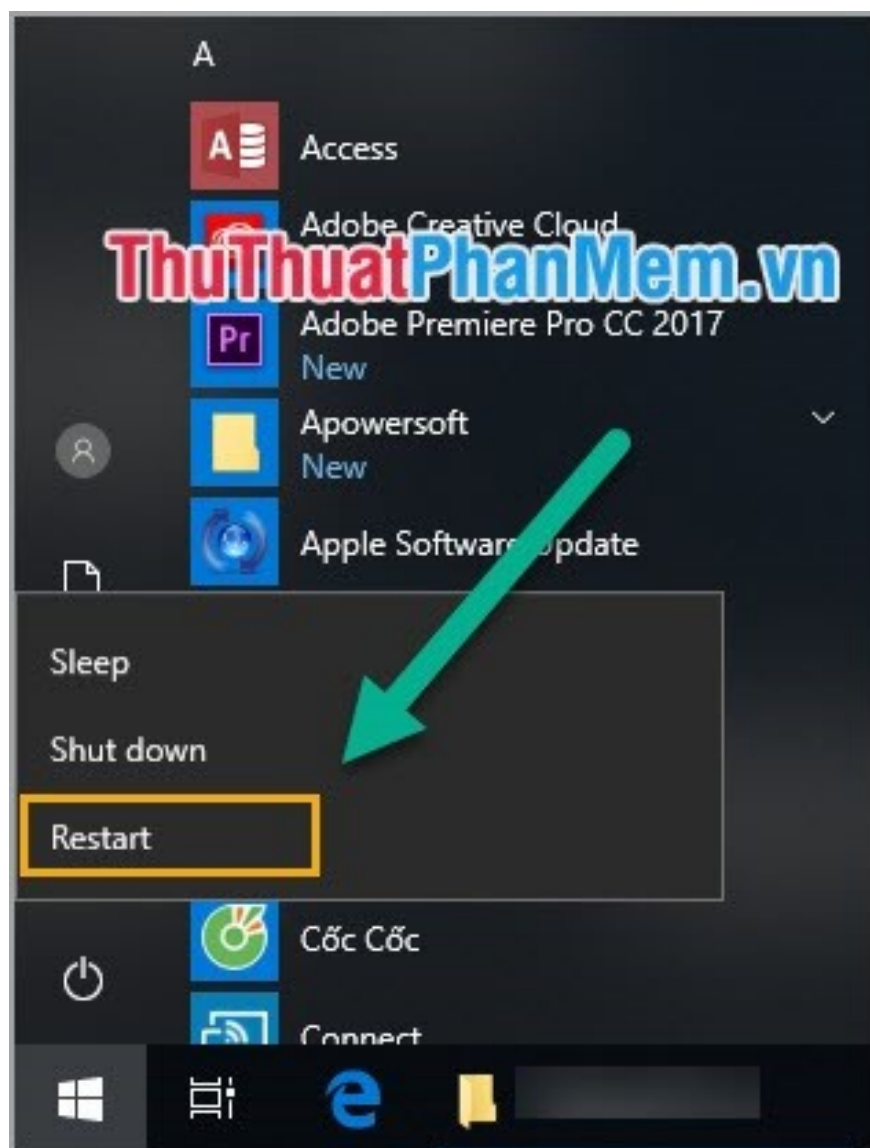
Reduce the resolution of the Video

Unstable Internet speed is also one of the main reasons affecting YouTube's inability to access. When encountered this reason is mainly due to the loss of AAG optical cable affecting international data transmission. You have to accept the view with low resolution to be more stable.



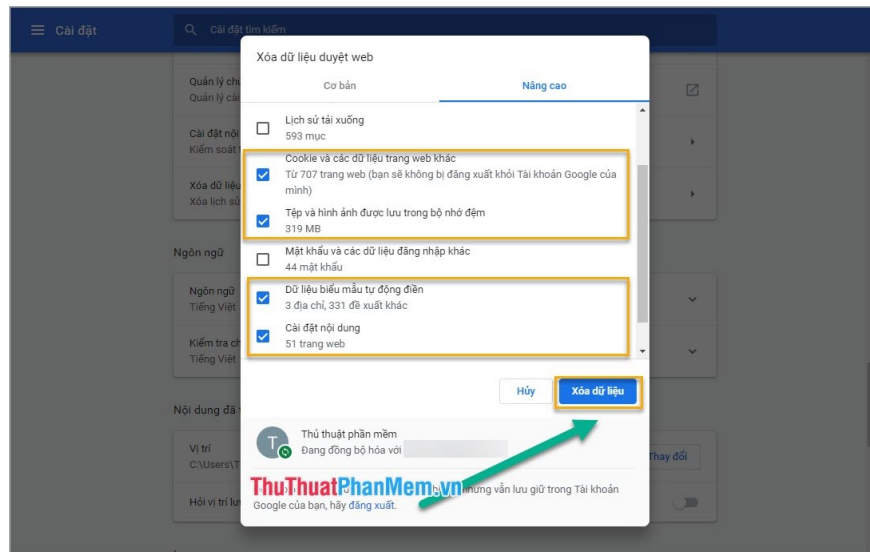
Restart the computer

Restarting the computer will help the software and data are restored to the default so that the system can reconnect to the Internet server. **Restarting** the computer is always the fastest and most effective way to deal with all errors on the computer.



Clear browser data

With each browser always save the operation and data of the user in the long run. In the course of use, we accidentally install something on the browser that affects the connection or block the YouTube page, deleting the browser data to help solve those problems.



Thus, in this article, Software Tips have shown you how to fix YouTube inaccessible error. Good luck!

You finished reading the article "**How to fix the error can not access YouTube**" edited by the [TipsMake](#) team. We hope this article has provided you with many useful tech tips and tricks. You can search for similar articles on tips and guides. Thank you for reading and for following us regularly.