

How to fix the Error 'a network cable is not properly plugged in or may be broken'

This article Help you better understand the cause of A network cable is not properly plugged in or may be broken error and How to fix 'A network cable is not properly plugged in or may be broken' error.

"A network cable is not properly plugged in or may be broken" is an error that can appear on almost any computer, preventing you from connecting to the Internet. This is one of the most common issues users have reported. So how to fix this error? Please see the article below!

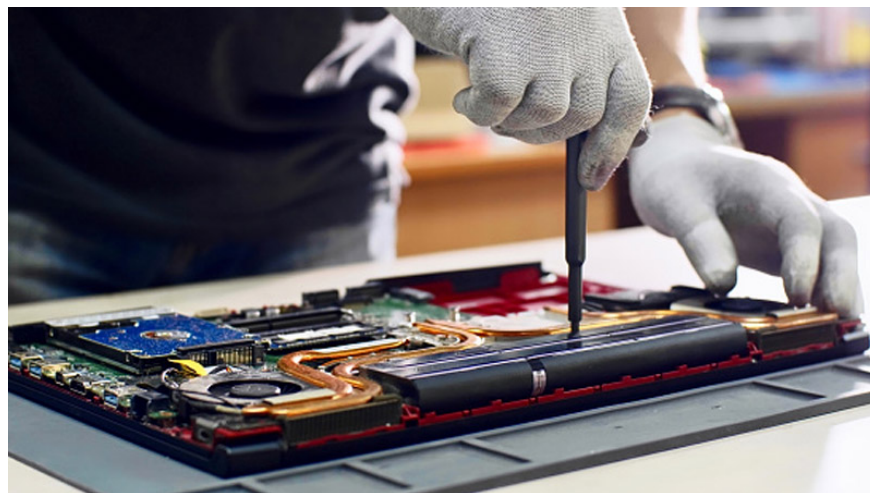
1. The cause of the error "A network cable is not properly plugged in or may be broken"

1. The network cable is plugged into the wrong place or incorrectly and may even be broken, making it impossible to connect to the Internet.
2. Due to a faulty network card.
3. Missing Driver or error.

2. How to fix the error "A network cable is not properly plugged in or may be broken"

2.1. Method 1: Restart the computer

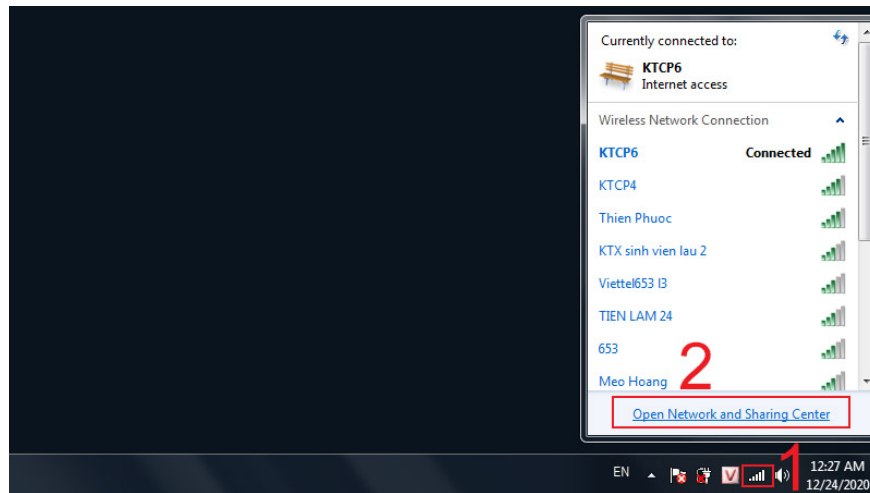
By turning off the power completely, wait a few seconds, and then turn on the computer again. If you are using a laptop , do the extra step remove the battery and wait for 10 minutes then reinsert the battery, plug in the laptop charger and restart Windows .



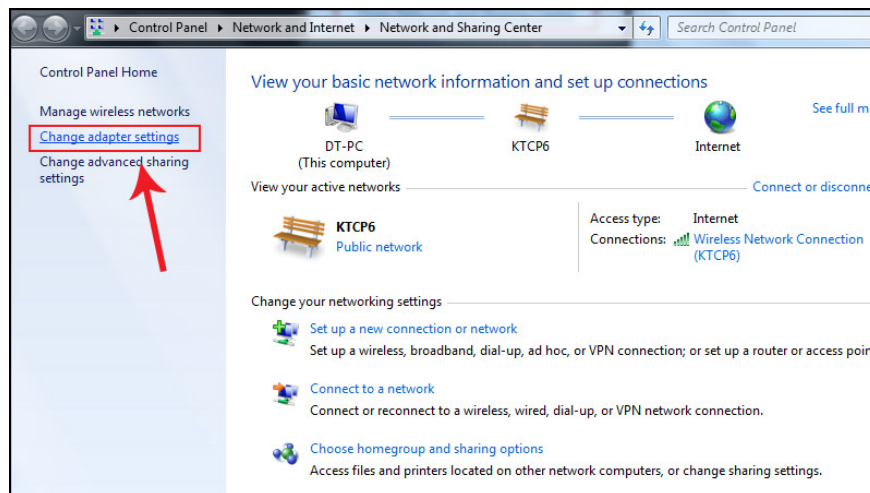
2.2. Method 2: Turn off the Ethernet network adapter if not in use

- For computers using Windows 7

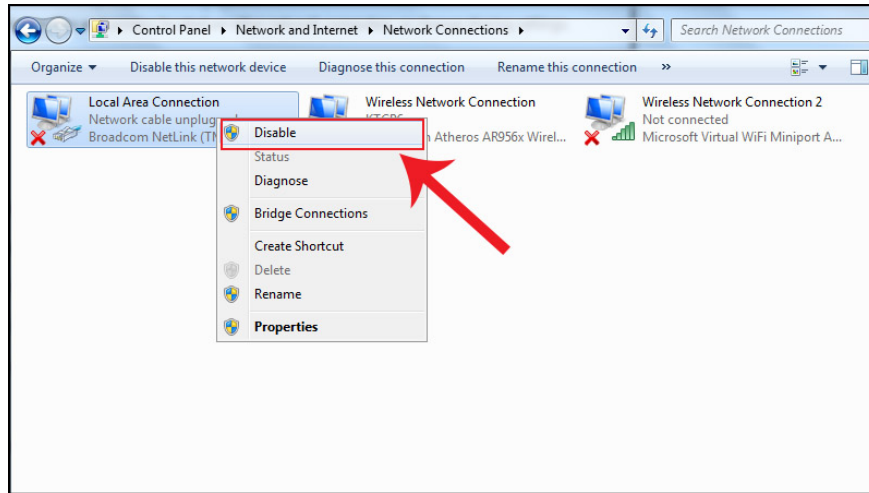
Step 1: Click on the icon of the network connection > Select Open Network and Sharing Center.



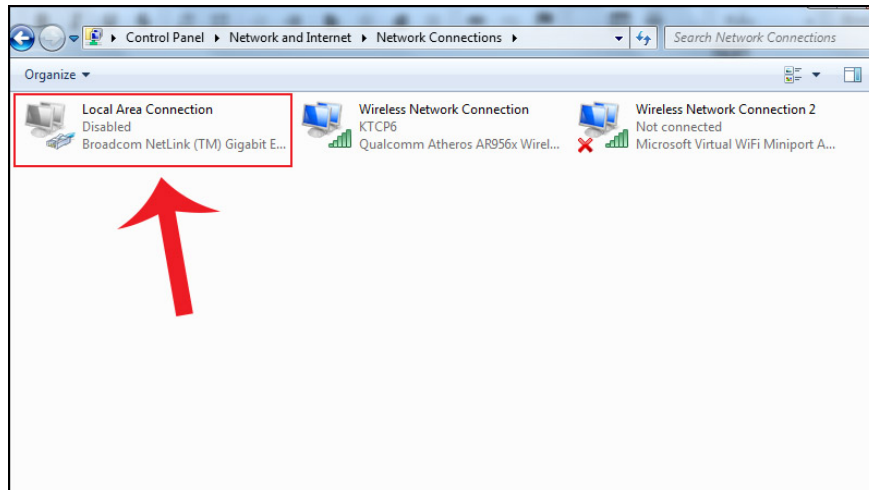
Step 2: After the dialog box appears > Select Change adapter settings.



Step 3: Select the Ethernet port you want to disable > Right-click and select Disable.

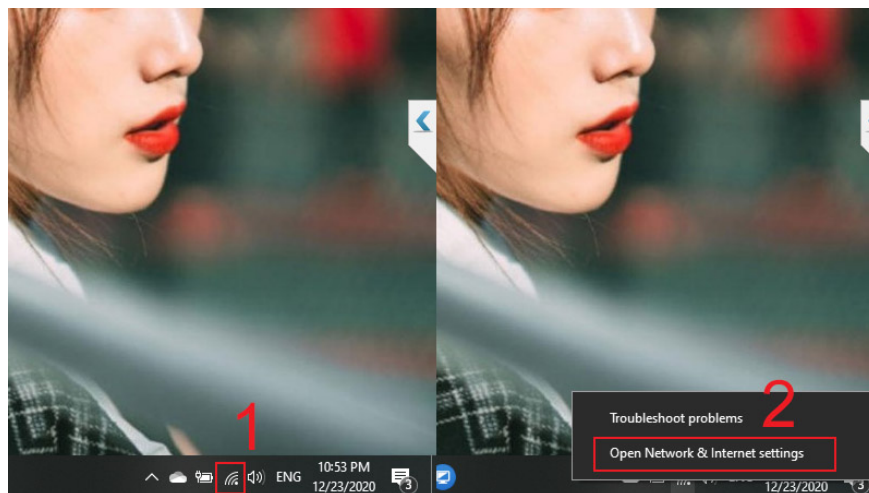


Interface after disabling the Ethernet network adapter.

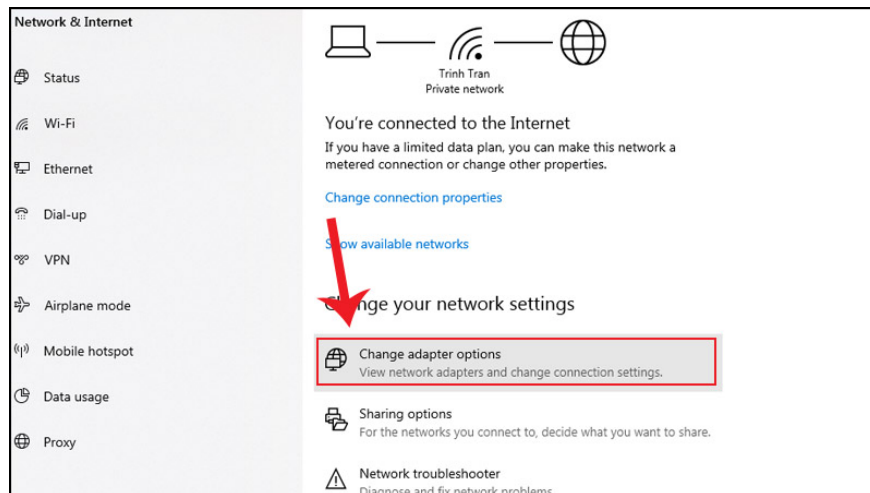


- For computers using Windows 10

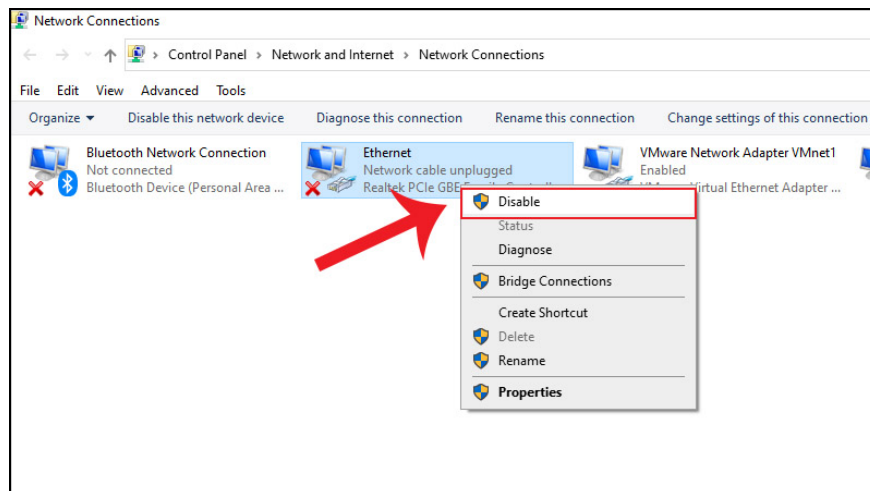
Step 1: Click on the icon of the network connection > Select Open Network and Sharing Center.



Step 2: After the dialog box appears> Select Change adapter options.



Step 3: Select the Ethernet port you want to disable and right-click and select Disable.



?

2.3. Method 3: Check both ends of the Ethernet cable

To make sure they don't get loose. One end will be connected to your computer and the other end will be connected to the primary network device, possibly the Router .

If this doesn't work, try checking if the cable is faulty. If the cable is really faulty, consider buying a cable or replacing it with a new network cable.

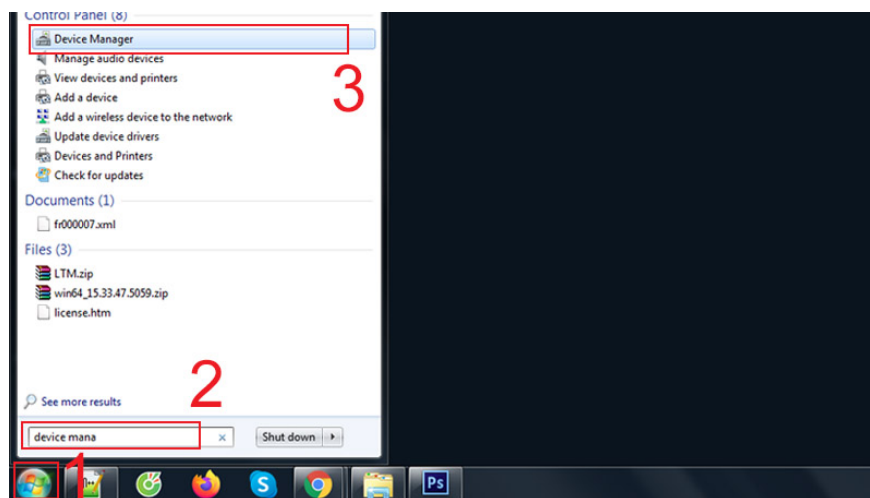


Note: To check if the cable is faulty, first just plug the current cable into another computer or take an existing Ethernet cable that is in normal use instead.

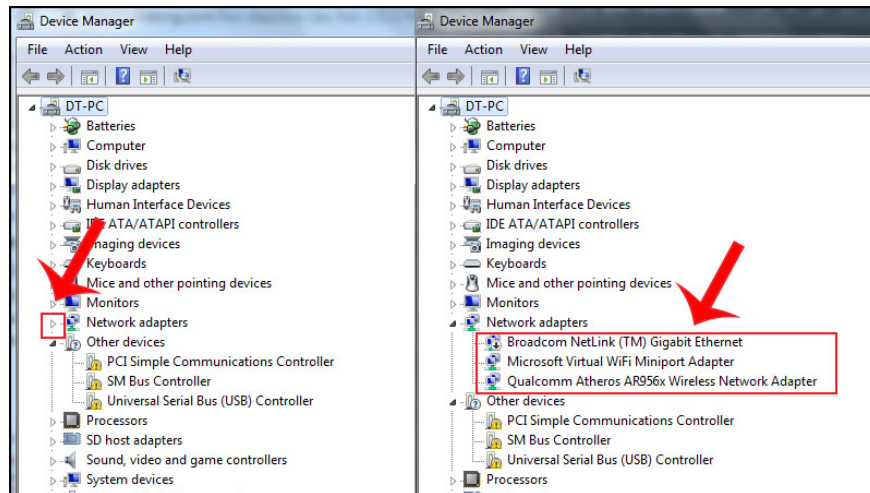
2.4. Method 4: Update the network driver to a newer version if available

- How to update Network Driver on Windows 7

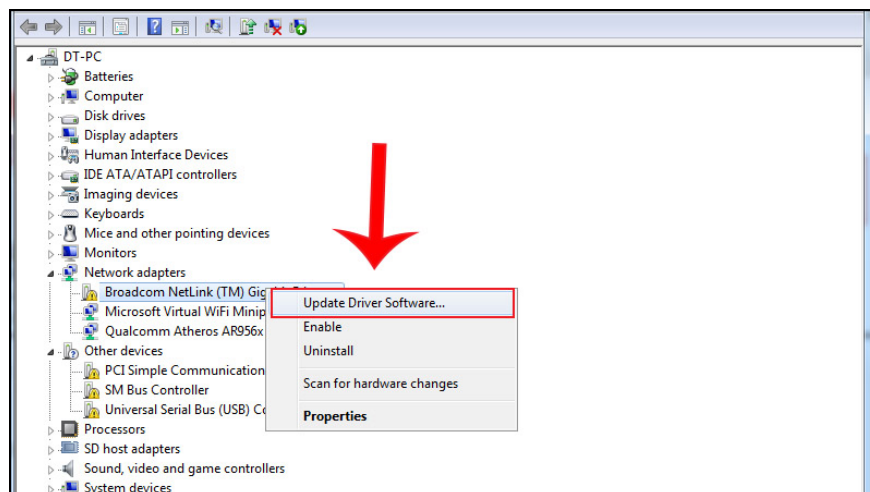
Step 1: Open the Windows window > Enter the search box "device manage" > Click on Device Manage.



Step 2: In the Device Manage window, navigate to and click on Network adapters.



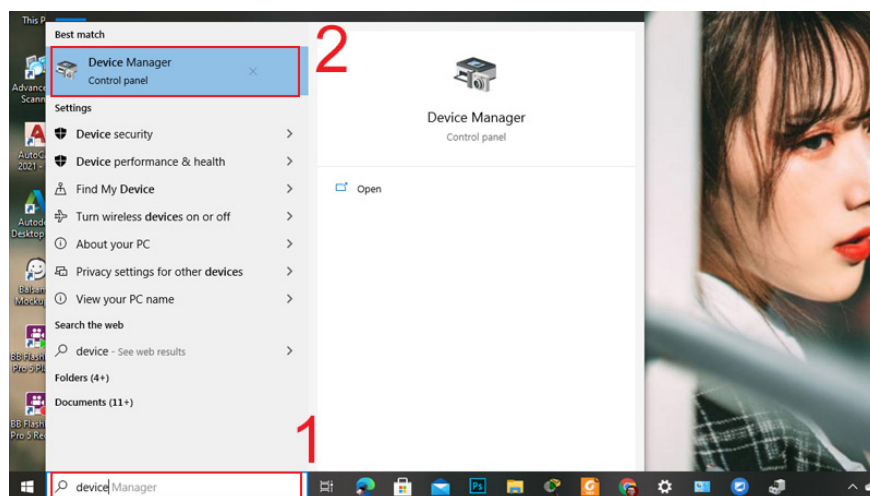
Step 3: Update driver by right-clicking any item> Select Update driver Software.



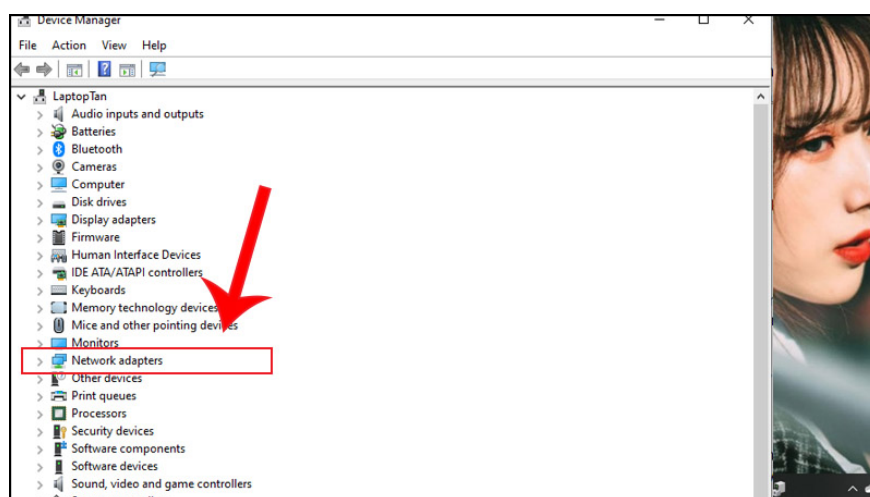
Note: Updating only drivers that show a yellow warning.

- How to update network drivers on Windows 10

Step 1: Open the Windows window and enter the search box "device manage"> Click on Device Manage.



Step 2: In the Device Manager window, navigate to and click on Network adapters.



Step 3: Update Driver by right-clicking any item> Select Update Driver Software.

Note: Drivers on Windows 10 are always automatically updated, so this error rarely occurs.

2.5. Method 5: Remove and reinstall the adapter hardware

On some older computers, the Ethernet adapter is either a detachable USB, PCMCIA, or PCI Ethernet. Remove and reinsert the adapter hardware to verify that it is properly connected. If that doesn't work, try replacing the power adapter.

Note: If the above methods still do not fix the error, the device on the other end of the Ethernet connection (Switch, Router, .) may be damaged. Fix problems with these devices if needed.

This article has provided useful information on how to fix the "A network cable is not properly plugged in or may be broken" error. Good luck!

You finished reading the article "**How to fix the Error 'a network cable is not properly plugged in or may be broken'**" edited by the [TipsMake](#) team. We hope this article has provided you with many useful tech tips and tricks. You can search for similar articles on tips and guides. Thank you for reading and for following us regularly.

