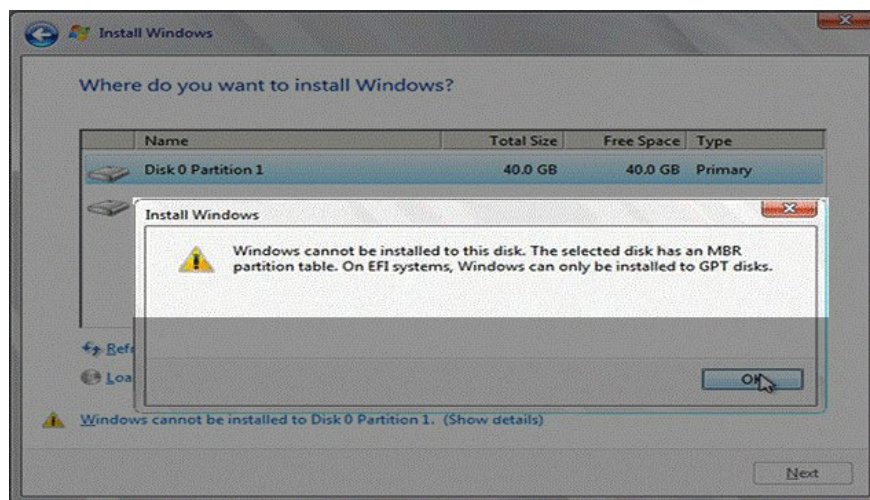


How to fix 'The disk selected has an MBR partition table' when installing Windows

For many new laptop computers, when you proceed to install Windows in the usual way, there is a notification error: Windows cannot be installed to this disk. Phân vùng ?ã ch?n có m?t b?ng phân vùng MBR. On EFI systems, windows can only be installed to GPT disk.

For many newer laptop computers, when you proceed to install Windows in the usual way, you may get an error message saying: " **Windows cannot be installed to this disk. The disk selection has an MBR partition table. On EFI systems, windows có th? ???c cài ??t ?? ?a GPT .** " Understanding is that the version of Windows you are using does not match the hard drive format of that computer.



So how to handle it here? Please join TipsMake.com refer to how to resolve this error.

What is the main cause here? That's because your computer, your laptop uses **BIOS** according to the **EFI** standard (also known as **UEFI**), it requires formatting the hard drive to install Windows as **GPT** while your hard drive is a regular **MBR** format. And the fix here is to convert the format, convert the hard drive format from **MBR** to **GPT** for compatibility.

Method 01: request to create USB boot install Windows according to UEFI or Legacy standard

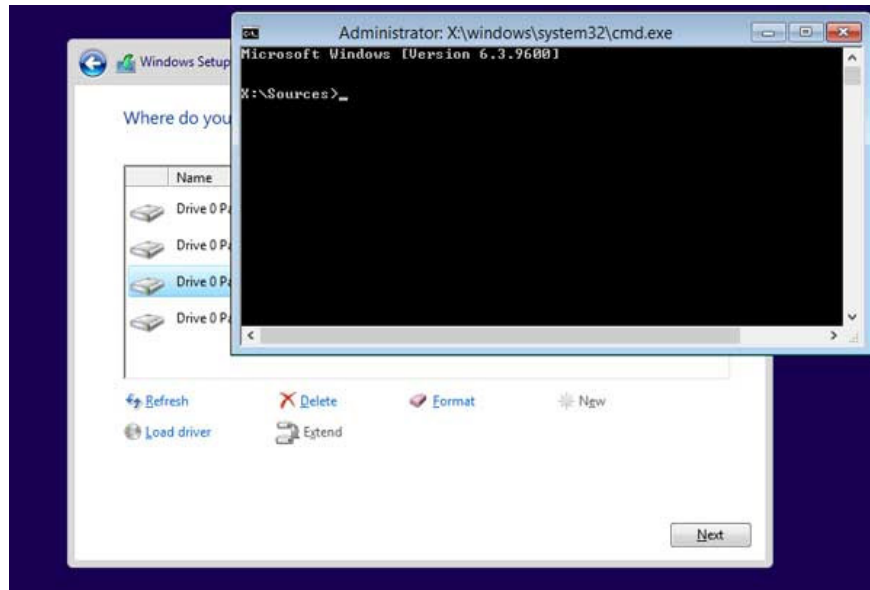
Of course to do this, you have to prepare:

1. USB Flash drive capacity is at least 4GB.
2. ISO file installed by Windows.

With the operation of creating a USB drive to install Windows, please refer to the tutorial made by Rufus here.

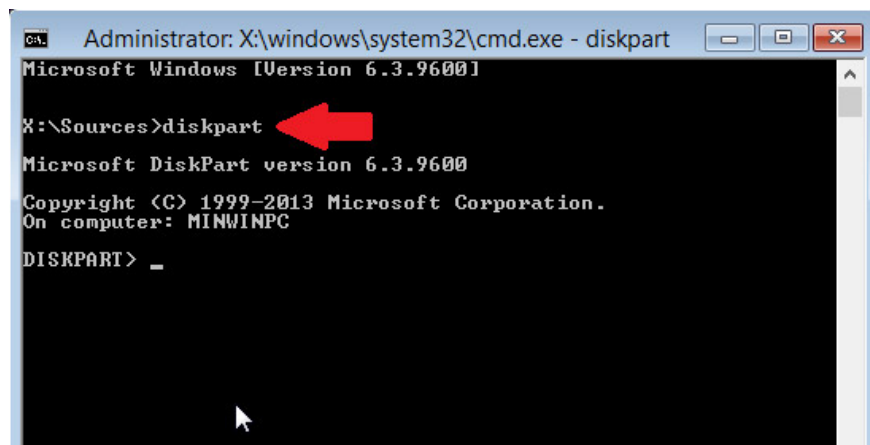
Method 02: transfer hard drive format from MBR to GPT while installing Windows

With this method, you can be more proactive, as long as you have to remember the command. Here, in the stage to select the hard drive installed Windows, you press the shortcut combination **Shift + F10** to open **cmd** :



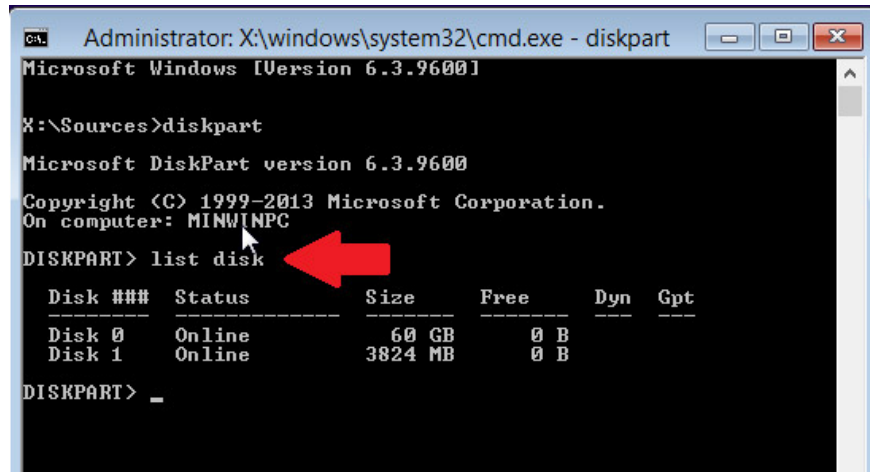
Here, you type the command:

1. **diskpart**



Your computer has several hard drives, it will show up, most of it is a hard drive and many partitions. Note that even the USB device is plugged into the computer, this diskpart command also accepts 1 hard drive. Use the "

list disk " switch, and you will see in the results list that there are 2 hard drives:



```
Administrator: X:\windows\system32\cmd.exe - diskpart
Microsoft Windows [Version 6.3.9600]

X:\Sources>diskpart

Microsoft DiskPart version 6.3.9600
Copyright (C) 1999-2013 Microsoft Corporation.
On computer: MINWINPC

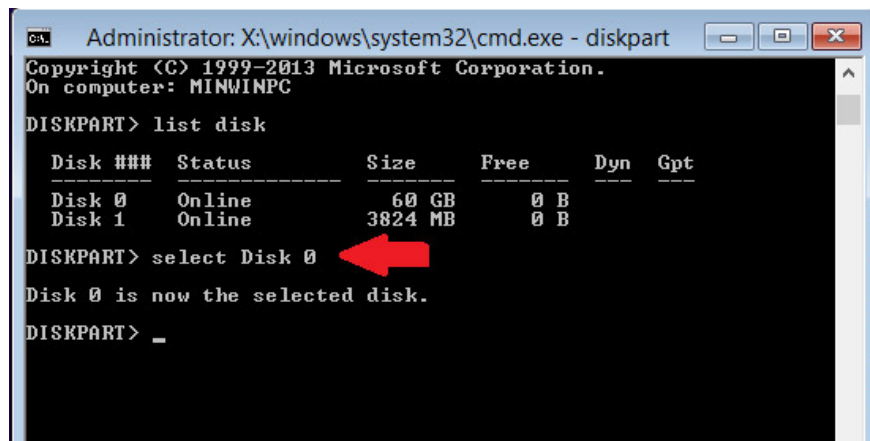
DISKPART> list disk

Disk ###  Status             Size             Free             Dyn  Gpt
-----  -
Disk 0    Online             60 GB            0 B
Disk 1    Online            3824 MB          0 B

DISKPART> _
```

Based on the size, you can know whether Disk 0 or 1 is the hard drive. In the picture, make sure Disk 0 is the hard drive - HDD, and Disk 1 is the USB drive (4GB capacity). Here we select the hard drive to convert the format, so select Disk 0, you type the command:

1. **select Disk 0**



```
Administrator: X:\windows\system32\cmd.exe - diskpart
Copyright (C) 1999-2013 Microsoft Corporation.
On computer: MINWINPC

DISKPART> list disk

Disk ###  Status             Size             Free             Dyn  Gpt
-----  -
Disk 0    Online             60 GB            0 B
Disk 1    Online            3824 MB          0 B

DISKPART> select Disk 0

Disk 0 is now the selected disk.

DISKPART> _
```

Next, use the **Clean** command . **Note:**This command will delete all partitions and data on the hard drive.

```
Administrator: X:\windows\system32\cmd.exe - diskpart
Copyright (C) 1999-2013 Microsoft Corporation.
On computer: MINWINPC

DISKPART> list disk

   Disk ###  Status         Size           Free           Dyn  Gpt
   -----  -
   Disk 0    Online         60 GB          0 B
   Disk 1    Online         3824 MB        0 B

DISKPART> select Disk 0
Disk 0 is now the selected disk.

DISKPART> clean
DiskPart succeeded in cleaning the disk.

DISKPART>
```

This operation can understand that the system will temporarily delete the hard drive format. Next is the **convert GPT** command:

```
Administrator: X:\windows\system32\cmd.exe - diskpart
Copyright (C) 1999-2013 Microsoft Corporation.
On computer: MINWINPC

DISKPART> list disk

   Disk ###  Status         Size           Free           Dyn  Gpt
   -----  -
   Disk 0    Online         60 GB          59 GB
   Disk 1    Online         3824 MB        0 B

DISKPART> select Disk 0
Disk 0 is now the selected disk.

DISKPART> clean
DiskPart succeeded in cleaning the disk.

DISKPART> convert GPT
DiskPart successfully converted the selected disk to GPT format.

DISKPART> _
```

This command works immediately. And to check if the format conversion was successful, type the command:

1. **list disk**

```
Administrator: X:\windows\system32\cmd.exe - diskpart
Copyright (C) 1999-2013 Microsoft Corporation.
On computer: MINWINPC

DISKPART> list disk

   Disk ###  Status       Size       Free       Dyn  Gpt
   -----  -
   Disk 0    Online      60 GB      59 GB
   Disk 1    Online     3824 MB     0 B

DISKPART> select Disk 0
Disk 0 is now the selected disk.

DISKPART> clean
DiskPart succeeded in cleaning the disk.

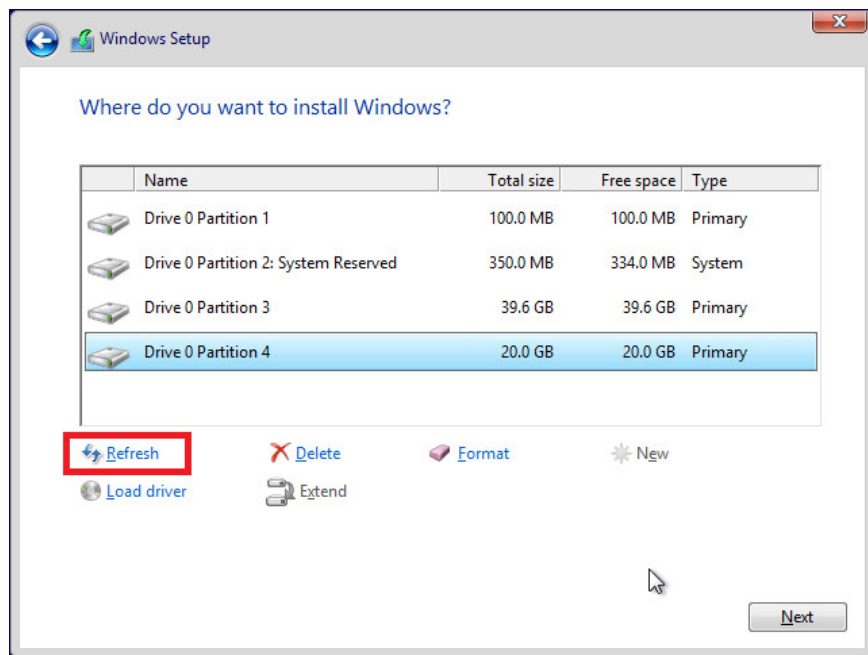
DISKPART> convert GPT
DiskPart successfully converted the selected disk to GPT format.

DISKPART> list disk

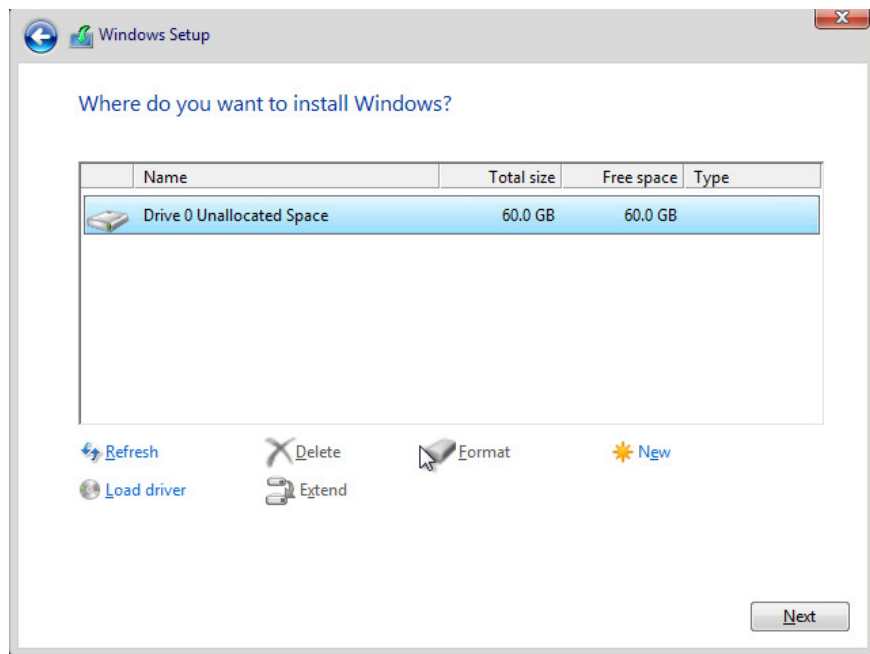
   Disk ###  Status       Size       Free       Dyn  Gpt
   -----  -
   * Disk 0    Online      60 GB      59 GB
   Disk 1    Online     3824 MB     0 B

DISKPART>
```

Once successfully converted, in the Gpt column of the "list disk" command, there will be an asterisk (*) to mark as shown above. Close the cmd window, and click the Refresh button in the partition selection window to install Windows:



As a result, we will install Windows onto this new hard drive partition:



And the remaining Windows installation process is too simple.

You finished reading the article "**How to fix 'The disk selected has an MBR partition table' when installing Windows**" edited by the [TipsMake](#) team. We hope this article has provided you with many useful tech tips and tricks. You can search for similar articles on tips and guides. Thank you for reading and for following us regularly.