

How to fix the disconnection error when playing League of Legends on your computer

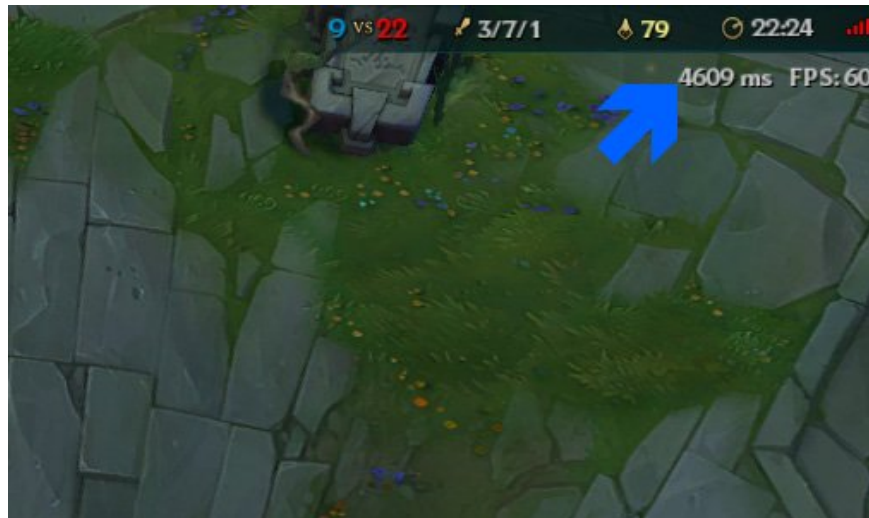
Here are some ways to fix LoL disconnect error, including the manifestation and cause of connection failure error, high ping error and some LOL connection related errors.

Connection error in LoL is one of the most annoying errors for many gamers. Unlike the black screen bug in League of Legends, this bug makes gamers quite uncomfortable if they are fighting. Here are some ways to fix the error of disconnecting League of Legends.

1. Information on the League of Legends Senna skill set
2. Summary of information about League of Legends Mobile
3. Champions buffed and nerfed in League of Legends 9.22

Expression causes connection loss LOL

The sign of disconnection in League of Legends will be high ping. In this case, you can see that the upper right corner of the screen has a very high ping (ms) number, causing lag when playing.



Next is the error of disconnection, your character is working suddenly and still everything around. Then display a table **Trying to reconnect** and maybe then everything will be turned upside down.



Error cannot connect to PVP server



Error of unspecified connection loss.



In addition to the error of disconnecting League of Legends above, gamers also encounter some other cases of connection loss error but rarely seen.

The cause of the LMHT connection error

The main cause of the error of disconnecting League of Legends is because your internet connection is weak or cannot connect to the internet or the hardware and wiring of the device.

Ways to fix disconnection error, error reconnect LOL

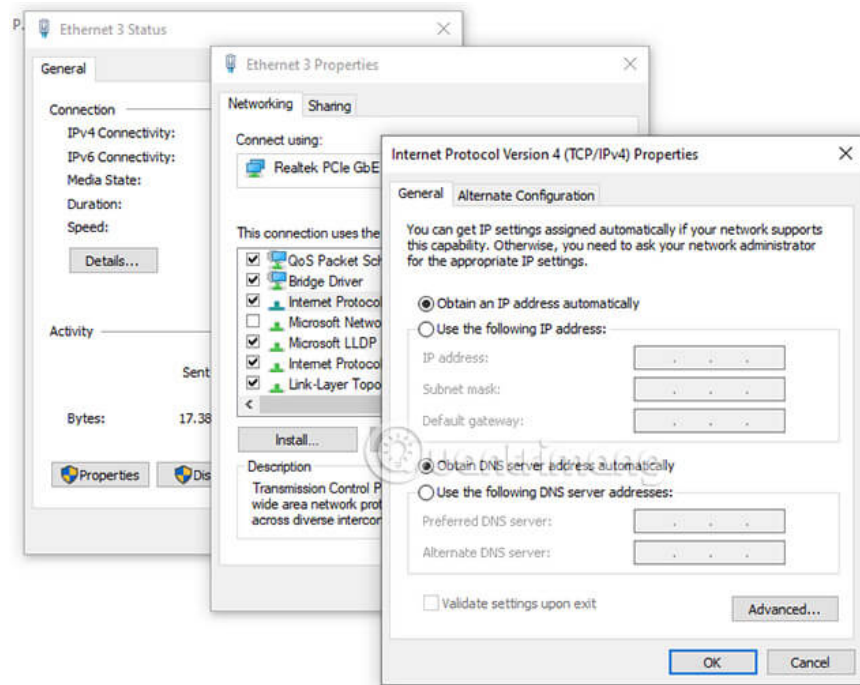
Use wired connection instead of Wifi



If you play League of Legends on a laptop, you can connect to the wifi to play for convenience. However, catching wifi is usually not as stable as Ethernet network when Wi-Fi waves will often be interfered with by many other wireless electronic devices such as other Wifi networks or telephone waves. They often cause loss of connection.

Although not making you have to get out of the match, but try to imagine fighting and eating fruit, then immediately connect again to find yourself having to count the number. So if you are connected via wired network then you should connect to wired network before going into the match.

Change DNS



How to fix connection loss with DNS is similar to the error of downloading or updating LMHT, you just need to change the IP address and DNS configuration. It will help you have a smoother and more stable match.

There are many people using the same transmission line

If your connection is low, make sure there are no other devices on your network besides you. Simply put, if there are many people using the same network, the bandwidth will have to be split evenly, not to mention anyone downloading or watching movies, you will definitely encounter the case of frequent disconnection.

Turn off the firewall (Firewall)



Firewalls are also one of the causes of the loss of League of Legends due to the mechanism of blocking incoming and outgoing connections. And sometimes also block connections coming from the League of Legends player. You can go to **Settings > Virus & threat protection** and turn off Windows 10 firewall (**Real-time and Cloud-delivered protection**)

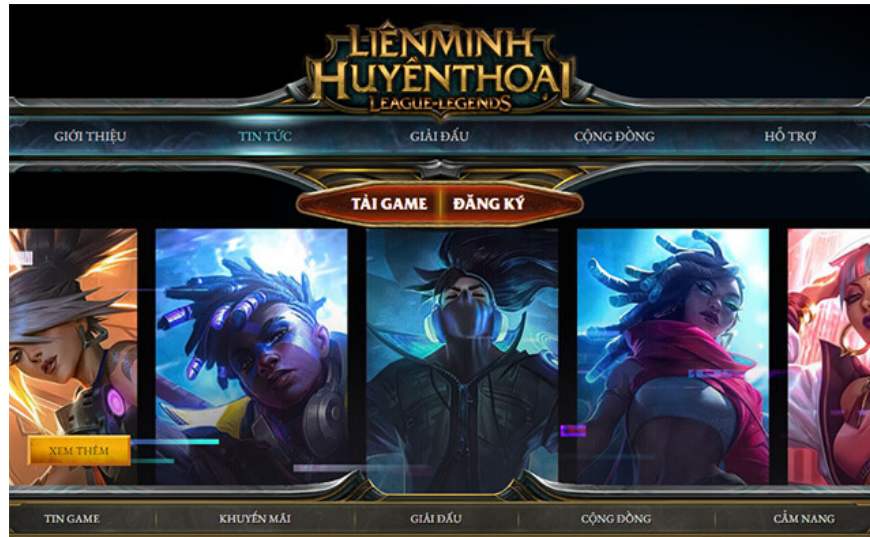
Or you have to update the firewall because systems that block connections from old firewalls often mistake LoL for malicious connections and block them. So if you use any antivirus applications that have not been updated, please update to the latest version from the developer.

Turn off applications "eat" bandwidth



Some software that runs in the background can increase the cache using bandwidth and will undoubtedly cause connection loss. These applications will usually be Zalo, Skype, iTunes, Spotify, Steam, uTorrent, Youtube, Twitch . Or the fake ip applications that you forgot to turn off before entering the game.

Check the LMHT server status



Sometimes the error of losing LOL usually does not come from your side, but from the server side of the game causing the situation of disconnection / delay often occurs in the game. When encountering this error, usually just exit and re-enter it will be normal.

If in case of LOL server technical error and occurs with many gamers, there will be a notice on the homepage of League of Legends. Or the gamers around you will lose the same connection.

Above are a few ways to fix the connection loss of League of Legends, if you encounter the case of disconnection as shown in the picture, try a few ways in this article to fix the error.

You finished reading the article "**How to fix the disconnection error when playing League of Legends on your computer**" edited by the [TipsMake](#) team. We hope this article has provided you with many useful tech tips and tricks. You can search for similar articles on tips and guides. Thank you for reading and for following us regularly.