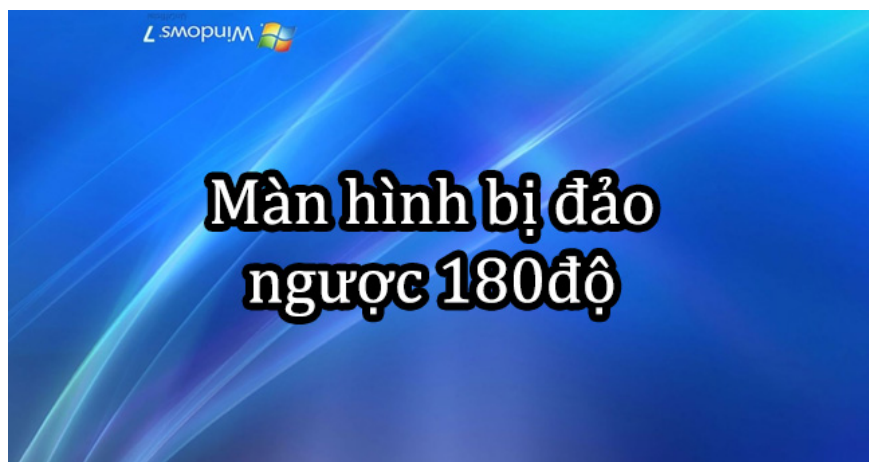


# How to fix the computer screen error is reversed

Reverse rotation screen is a common mistake that many people make when using Windows 7/8 / 8.1 / 10 computers, because while pressing the wrong key on certain operations. Or install software, games, ... to change Windows settings. So what to do to bring the computer back to a standard angle?

Do clones mistakenly press certain keys that your computer suddenly reversed 180 degrees. Or after installing software or games on the computer, changed the settings of Windows, causing the screen to be completely reversed. This situation happens quite often with Windows 7/8 / 8.1 or Windows 10 operating system. The fix for this problem is quite simple. We can completely change the settings right on the operating system to bring the screen back to standard.

1. How to fix blue screen error on computer?
2. Computer screen has a black error, how to fix it?
3. How to make subtitles for videos and movies?



## Method 1: Use the keyboard to adjust the screen:

To fix the situation of the screen being turned back 180 degrees or 90 degrees, we can press the key combination to adjust the screen to the original. However, you need to know which direction the screen is rotating in order to adjust.

1. **CTRL + ALT + Up arrow** : Landscape (default)
2. **CTRL + ALT + Down arrow** : Landscape (flipped)
3. **CTRL + ALT + Left arrow** : Portrait
4. **CTRL + ALT + Right arrow** : Portrait (flipped)

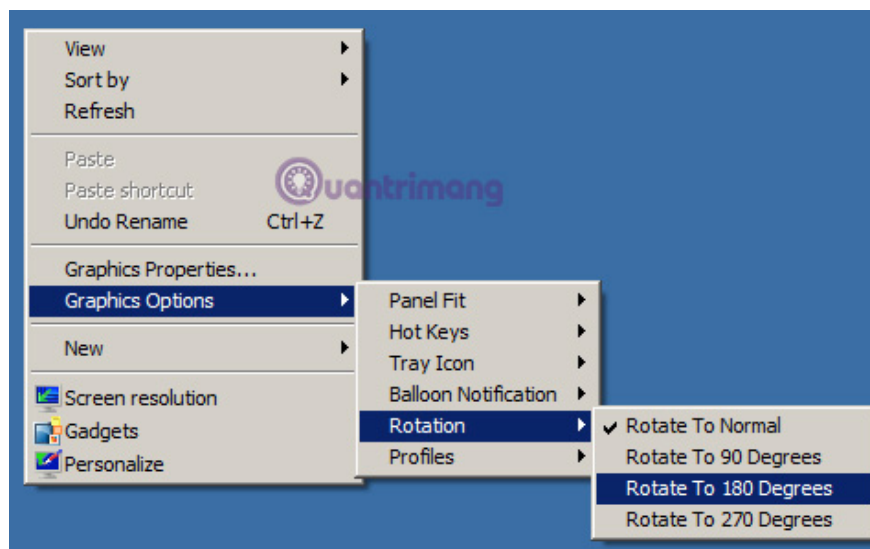


## Method 2: Change settings on Windows:

In addition to using the keyboard, we can adjust the screen rotation mode on the computer, with extremely simple operations.

**With Windows 7 computer:**

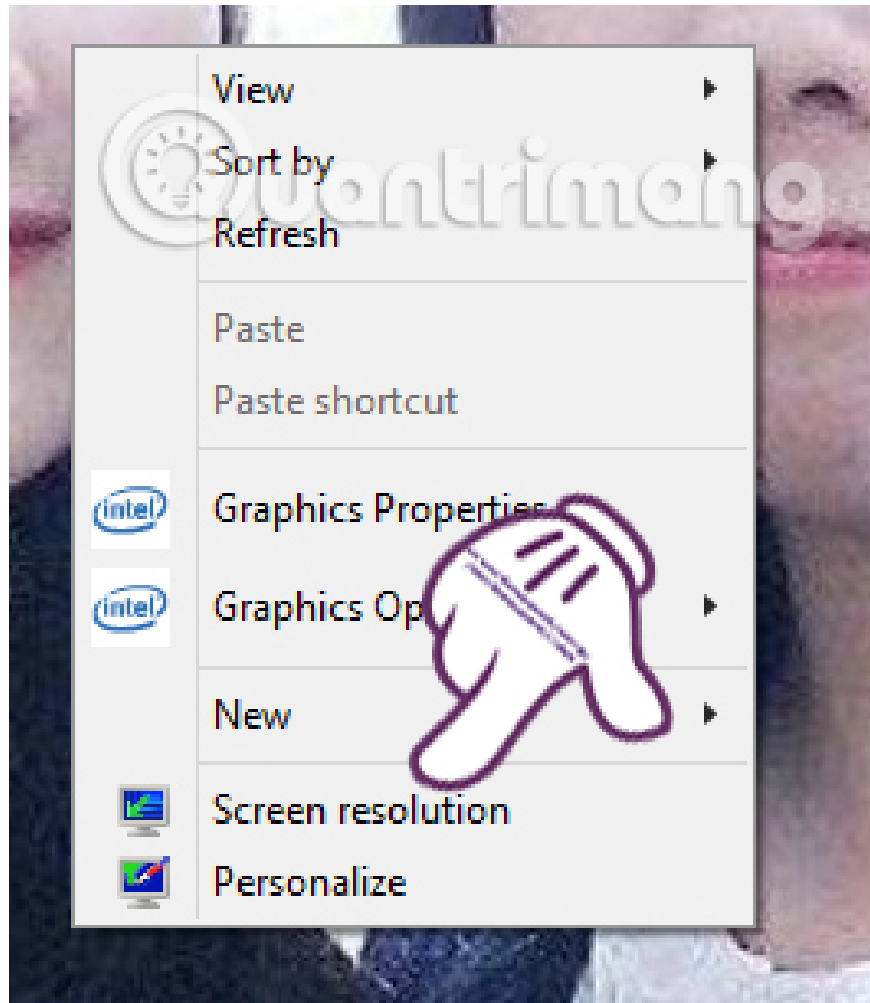
**Right-click the computer screen** , then **Graphics Options> Rotation> Rotate To 180 Degrees** to return to the old mode:



**With Windows 8 / 8.1 screen:**

**Step 1:**

**Right-click the computer screen** and select **Screen resolution**.



## Step 2:

At the new interface, **Orientation** section, we will proceed to adjust the screen:

1. **Landscape** : default mode.
2. **Landscape (flipped)** : rotate the screen upside down.
3. **Portrait** : Rotate the screen to the left.
4. **Portrait (flipped)** : Rotate the screen to the right.

To return the screen to **default mode** , press Select **Landscape**> **Apply**> **OK** to save the new setting.

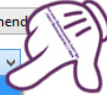
Change the appearance of your display



Display: 1. Lenovo AIO PC

Resolution: 1600 x 900 (Recommended)

Orientation: Landscape  
Landscape  
Portrait  
Landscape (flipped)  
Portrait (flipped)



Advanced settings

Make text and other

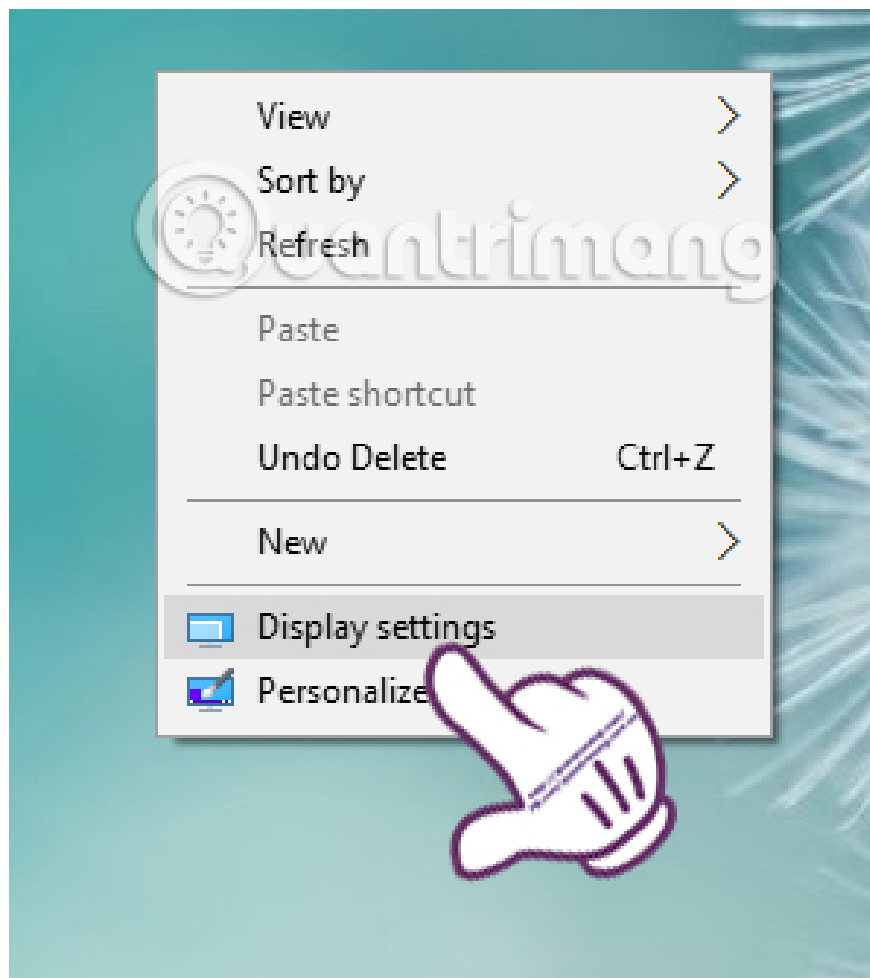
What display settings should I choose?

OK Cancel Apply

## With Windows 10 computer:

### Step 1:

At the Desktop , right-click and select **Display settings** .

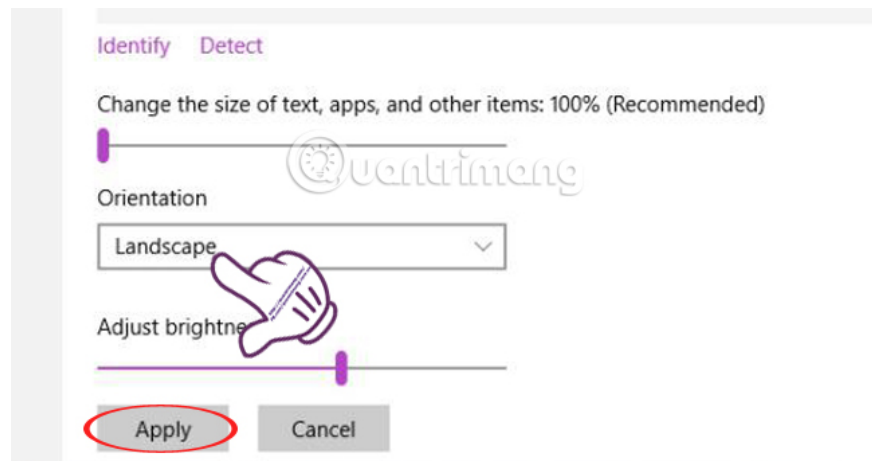


## Step 2:

Soon you will get to the Settings interface. In the **Display** section, we will pull down the **Orientation** section in the right view. Here, you will see different options:

1. **Landscape** : normal mode.
2. **Portrait** : rotate the screen to the left.
3. **Landscape (flipped)** : rotate the screen upside down.
4. **Portrait (flipped)** : rotate the screen to the right.

To bring the screen to **default mode** , we click **Landscape** then **Apply** to save it.



So, we have helped you fix the screen error of 180 degrees inverted or 90 degrees. Besides, with different screen rotation options, you can freely adjust the screen to whatever position you like.

## Refer to the following articles:

1. 4 steps to troubleshoot audio loss in Windows
1. Instructions to fix yellow exclamation computer network with only 3 steps
1. 4 ways to fix IDM error Fake Serial Number

**I wish you all success!**

You finished reading the article "**How to fix the computer screen error is reversed**" edited by the [TipsMake](#) team. We hope this article has provided you with many useful tech tips and tricks. You can search for similar articles on tips and guides. Thank you for reading and for following us regularly.