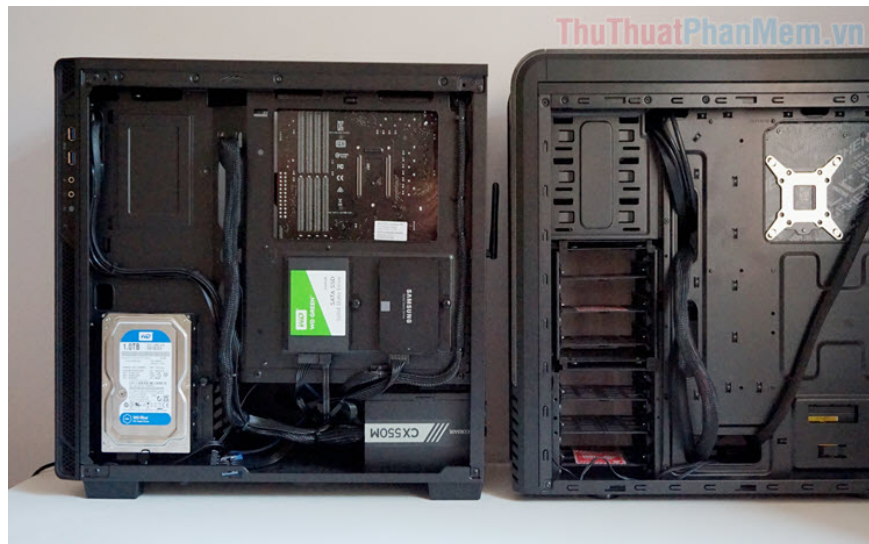


How to fix the computer error does not recognize the hard drive

In the process of using a computer, it is inevitable that the system will not recognize the hard drive and this is one of the very basic errors. To fix this error, force you to confirm their true cause and come up with a suitable solution.

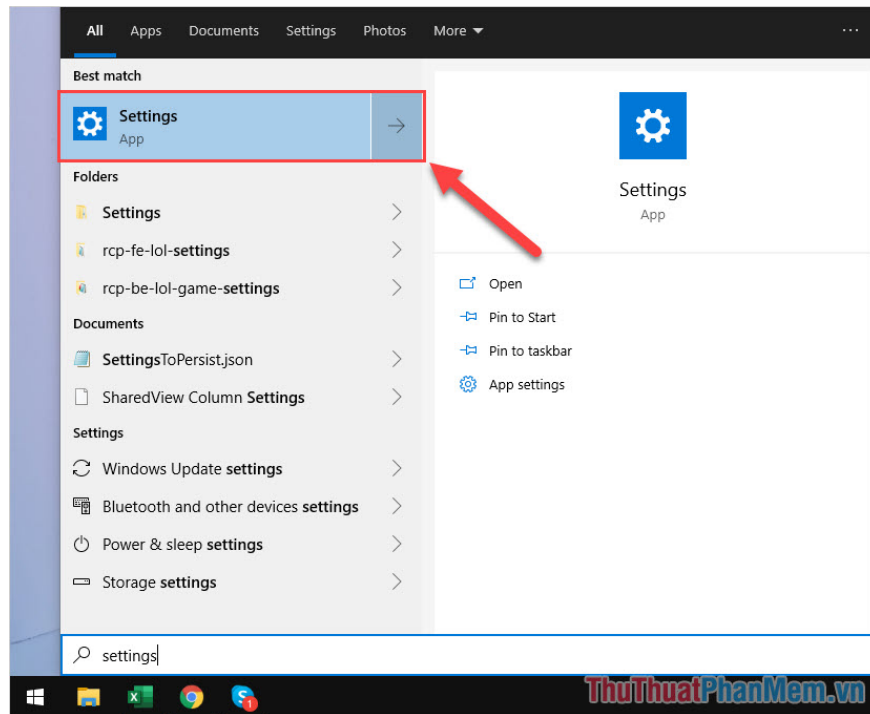
In the process of using a computer, it is inevitable that the system will not recognize the hard drive and this is one of the very basic errors. To fix this error, force you to confirm their true cause and come up with a suitable solution. In this article, Software Tips will guide you how to fix computer errors that do not recognize the hard drive.



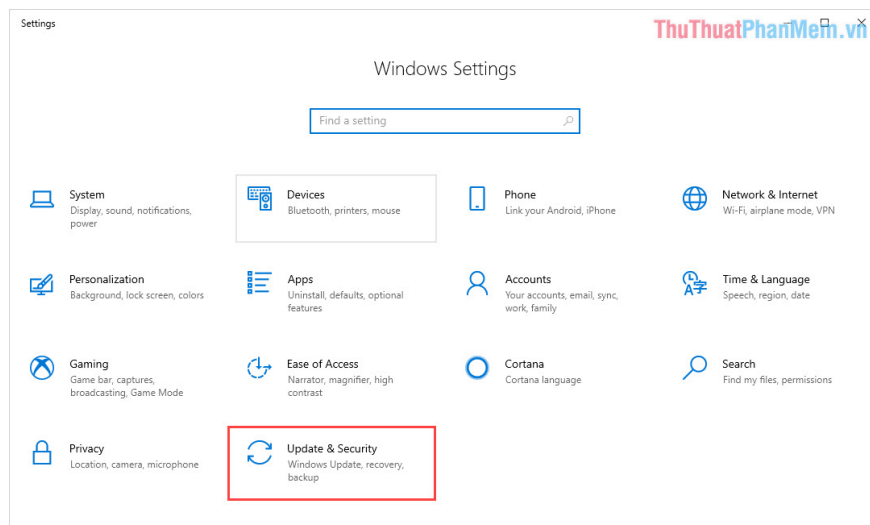
1. Use the debugging tool on Windows 10

Not when we connect the drive to the computer, we will receive immediately, but you need to properly set up the drive in the BIOS and some related settings.

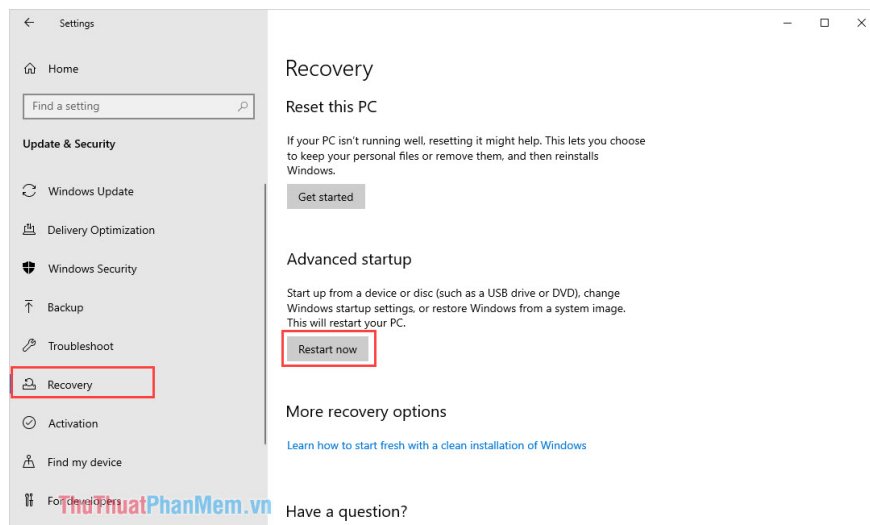
Step 1: You proceed to open **MenuStart** and enter **Settings** to open the settings on the computer.



Step 2: Then, you select the item **Update & Security** .



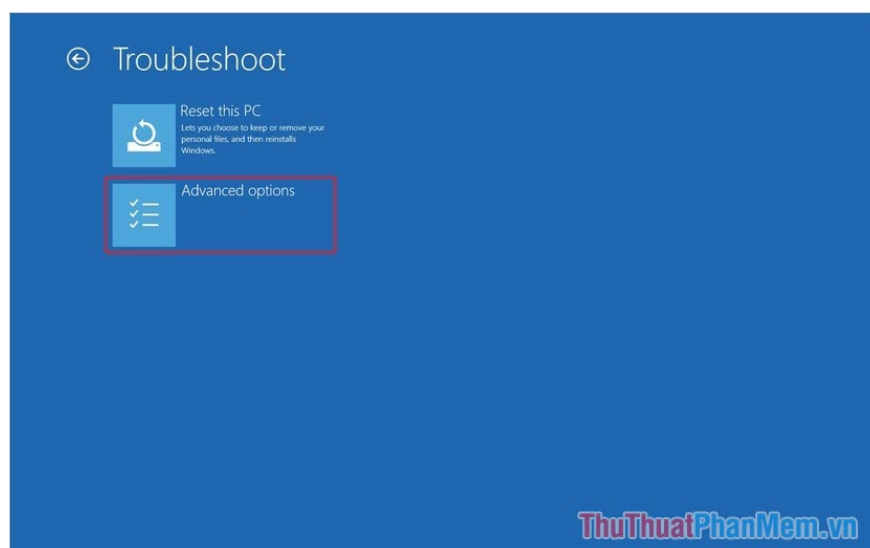
Step 3: Next, select **Recovery** and select **Restart Now** in the **Advanced Startup** section .



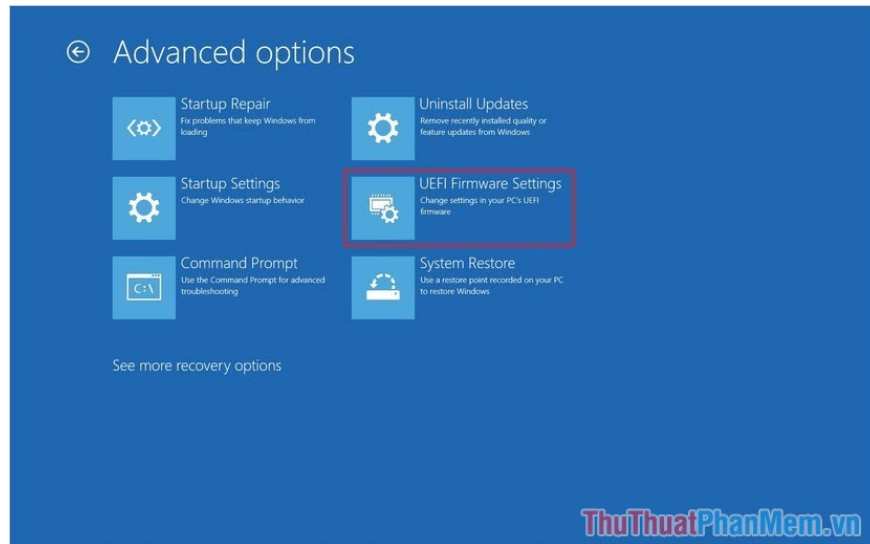
Step 4: At this point, your computer will reboot and the setup interface. Here, select **Troubleshoot** .



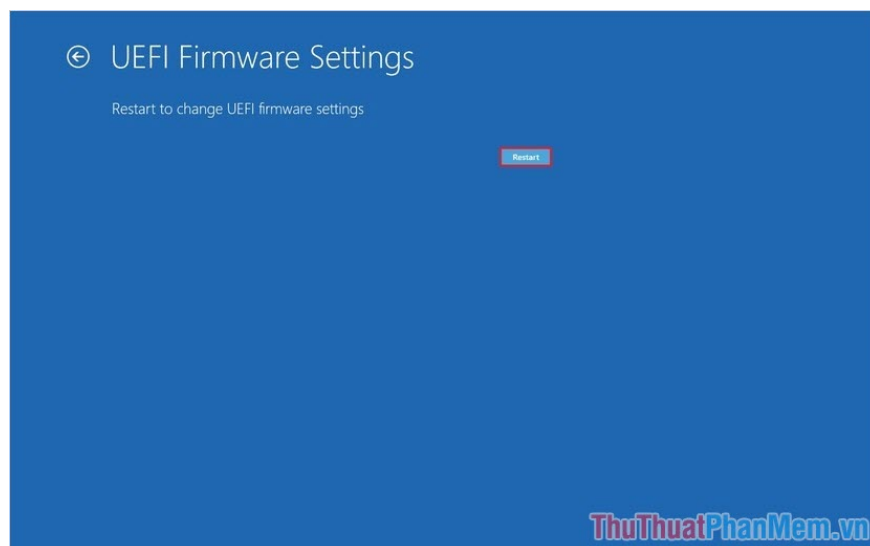
Step 5: Continue to select **Advanced options** .



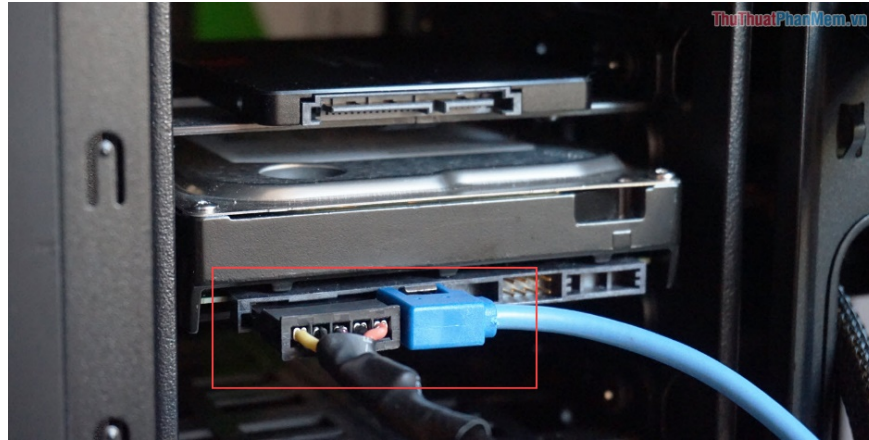
Step 6: Then, you choose **UEFI Firmware Settings** .



Finally, choose **Reset** to finish. Now check if your drive has been received.



2. Check the Jack connection



To connect a hard drive to the computer, we will need two main wires: the Data cable and the Power cable. For advanced M.2 hard drives, we just need to connect them to the available slots on the motherboard. While conventional 2.5 / 3.5 "hard drives require a lot of wires, please check carefully whether the wiring is properly connected and sure. You can even get the Other cord and plug into another port to try.

3. Read the motherboard instructions

Hard drive systems connected to the motherboard will use Lane PCI-e and on some current motherboard models use a relatively complex hard drive switch controller. For example: If you use an NVMe SSD on the motherboard, the SATA 0/1 port will be completely turned off. So if you insert the hard drive into SATA 0/1 port, the system will not receive the hard drive.

The best way to overcome that is to carefully read the motherboard's instructions to see how to connect the SATA ports are open and accurate. Usually you will find this information in the **Storage** section of the manual.



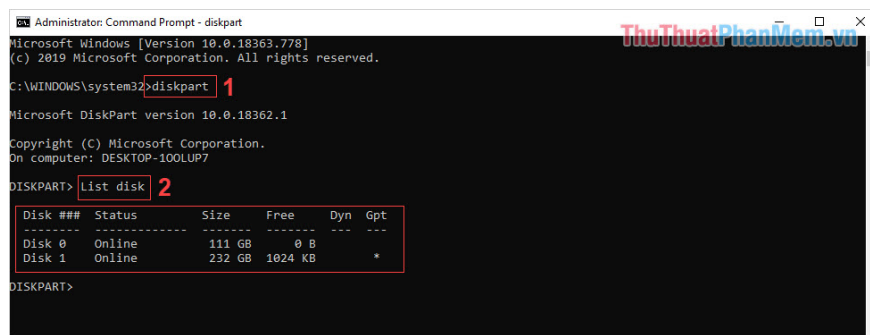
4. Check the hard drive system in CMD

CMD will help you check the list of connected hard drives on the computer. If you see connected hard drives that have not yet appeared, it is most likely because your operating system has problems identifying the drive.

To do so, you proceed to do the following:

Step 1: You proceed to open **MenuStart** and enter **Command Prompt** to open **CMD** .

Step 2: After that, you enter the **Diskpart** command to switch to drive mode and continue to enter the **List disk** command to see the drive list.



```
Administrator: Command Prompt - diskpart
Microsoft Windows [Version 10.0.18363.778]
(c) 2019 Microsoft Corporation. All rights reserved.

C:\WINDOWS\system32>diskpart 1

Microsoft DiskPart version 10.0.18362.1

Copyright (C) Microsoft Corporation.
On computer: DESKTOP-100LUP7

DISKPART> List disk 2

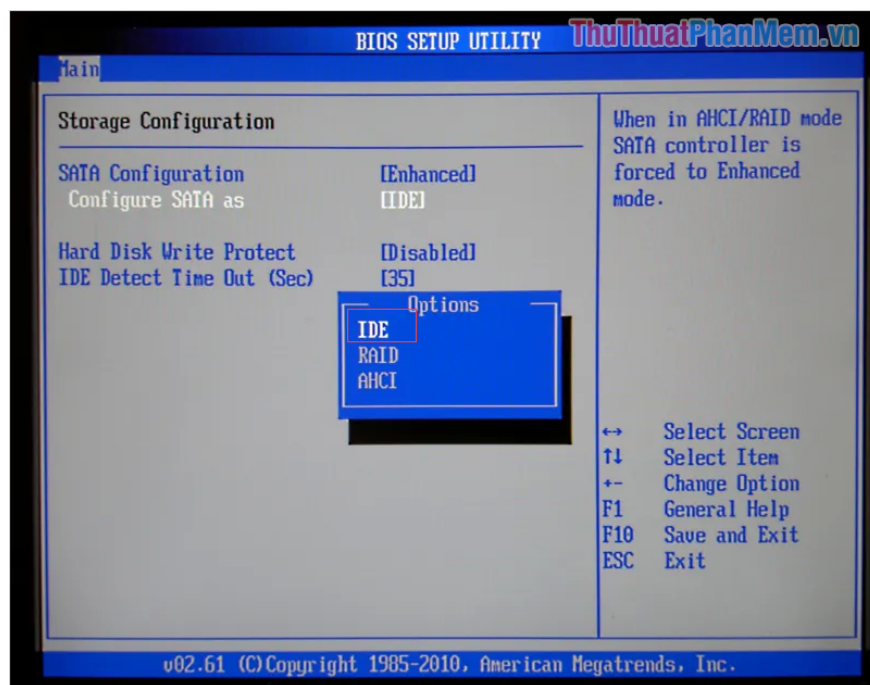
Disk ### Status      Size      Free      Dyn  Gpt
-----
Disk 0  Online        111 GB    0 B
Disk 1  Online        232 GB   1024 KB

DISKPART>
```

If this list shows your drive but the computer does not mean your operating system is having trouble and try reinstalling Windows.

5. BIOS intervention

To check the hard drive, first you go into the BIOS and you still see the hard drive appear, but when the boot fails to see, check the SATA mode whether you are choosing IDE mode or AHCI mode. If in AHCI mode, you must immediately return to IDE mode, it will receive.



For different motherboards, there will be different BIOS so please take the time to search for IDE / AHCI (Sata Configuration) mode in the BIOS. Usually they will be located in Storage.

6. Take the hard drive to check

During use, it is also possible that your hard drive has a physical problem such as broken shaft, broken connection pins, dead storage chips. So please go to the store to have them checked and guaranteed.

In this article, Software Tips guide you how to fix computer errors that do not recognize the hard drive. Good luck!

You finished reading the article "**How to fix the computer error does not recognize the hard drive**" edited by the [TipsMake](#) team. We hope this article has provided you with many useful tech tips and tricks. You can search for similar articles on tips and guides. Thank you for reading and for following us regularly.
