

# How to fix the computer can not turn off

One of the most common errors on the computer today is the failure to shutdown. This seems to be a simple error, but a lot of people get in trouble because they don't know how to turn off the computer.

I will share with you 9 most effective ways to fix the computer not shutting down!

## 1. Using the power button (Not recommended)



In emergencies, shutting down the device by holding down the power button is the easiest and easiest way to do it. However, this is only the way in an emergency, but you should not do so often because it will affect the computer a lot. Besides using the power button, you can also disconnect the power to the computer so that they are turned off quickly.

## 2. Turn off the power completely



Normally, to turn off the computer you will choose Shutdown, but few people know that we also have a much more thorough and neat way of shutting down. To turn off the computer thoroughly, hold down Shift and select Shut down to shut down the computer thoroughly.

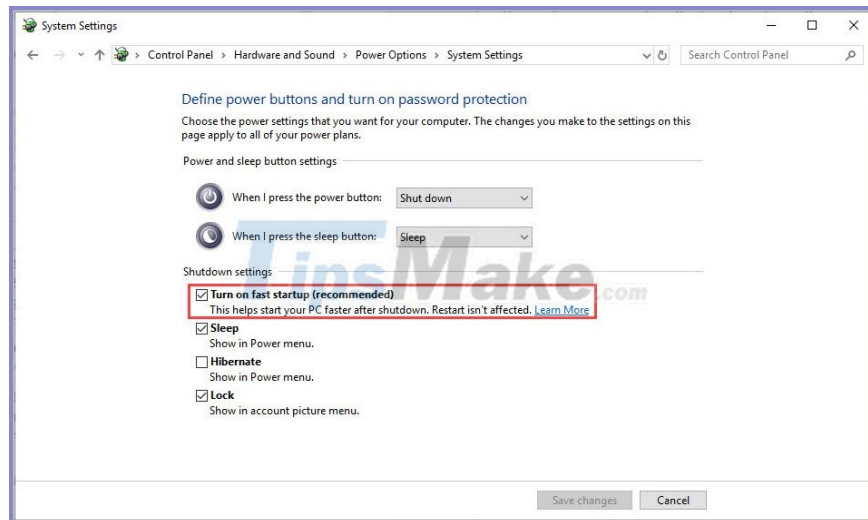
### **3. Turn off the Fast Startup feature in Windows**

On Windows 10 there is a very nice feature Fast Startup that supports quick start. This is a feature that uses an algorithm to move some of the necessary data files into the cache for fast booting. However, they also experience a lot of bugs and lack stability in operation.

Steps to disable Fast Startup feature:

1. You proceed to enter Control Panel into the Start Menu window to start.
2. Then you select Hardware and Sound and continue to select Power Options.
3. You choose Change what the power buttons do.
4. Click on Change settings that are currently unavailable to customize the information.

Here you uncheck the Turn on fast startup (recommended) and click Save Changes to save the changes.



## 4. Schedule the machine to turn off

If the above methods do not help you turn off the computer, you should try a timer for the system to automatically shut down through the internal software. This is the most useful and highly appreciated.

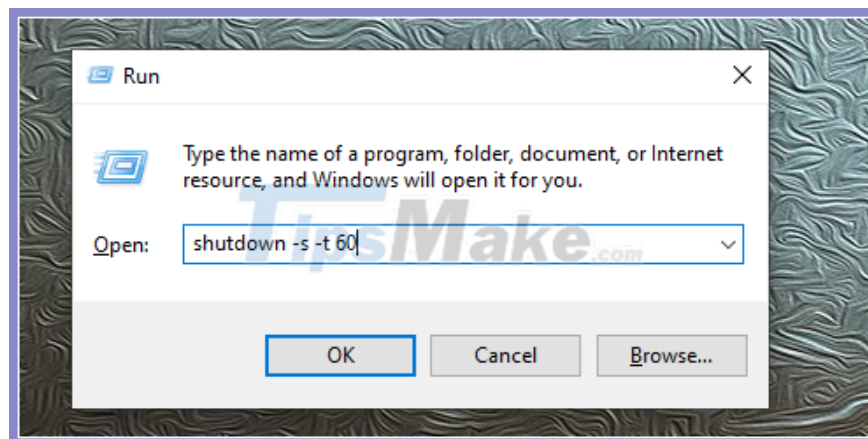
Step 1: You press Windows + R to open the RUN window

Step 2: Then, you enter the command to shutdown timer below:

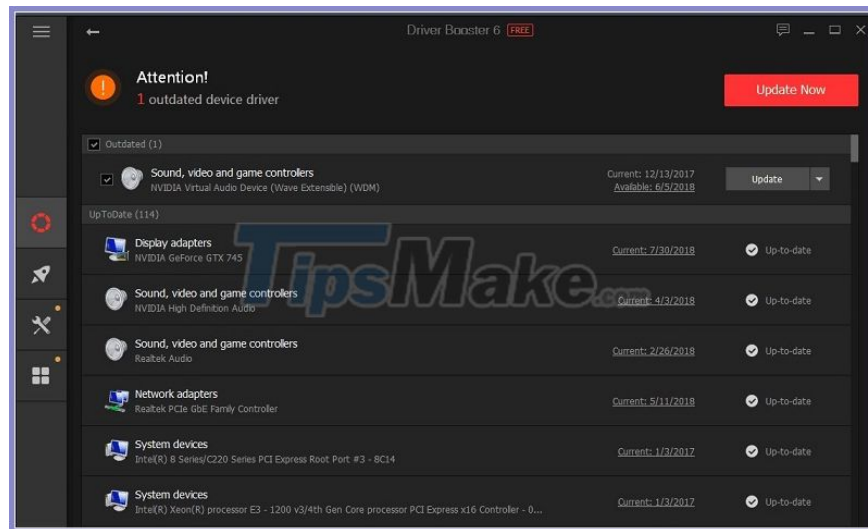
```
shutdown -s -t 60
```

Inside:

1. Shutdown: Shutdown command
2. -s: Action to execute Shutdown
3. -t: Timer action to take
4. 60: the number of seconds after entering the command will shutdown



## 5. Fix the error by updating the Driver

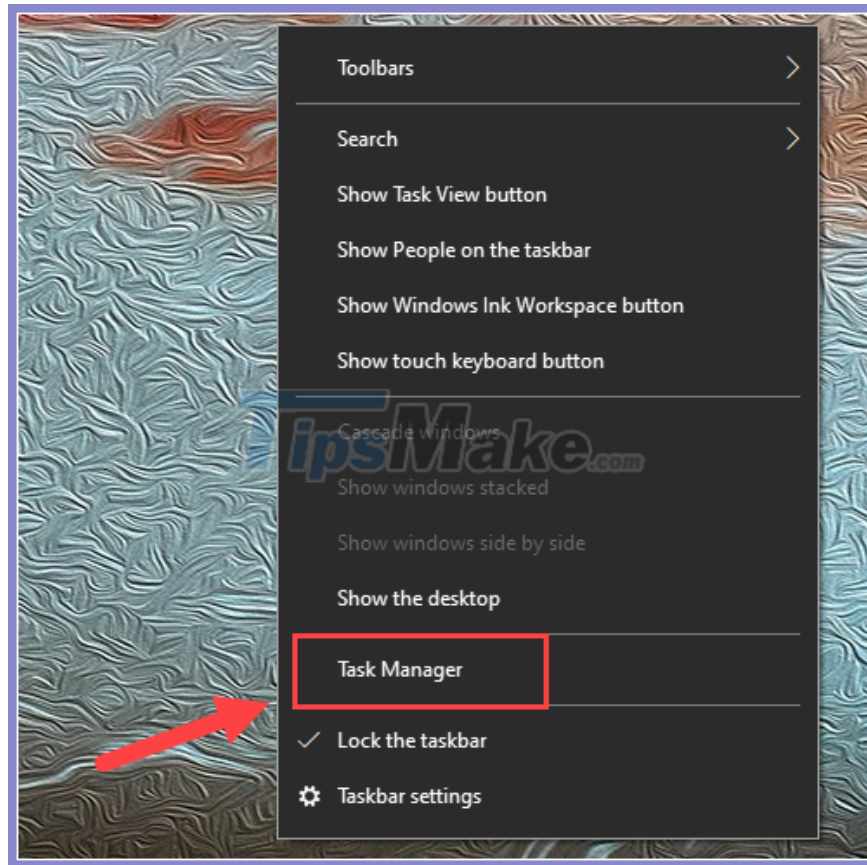


Luckily, the error does not come from the hardware, you can check the Driver on the computer to see if they are stable or not. Computers without drivers, they will not be stable because they cannot retrieve data from that component.

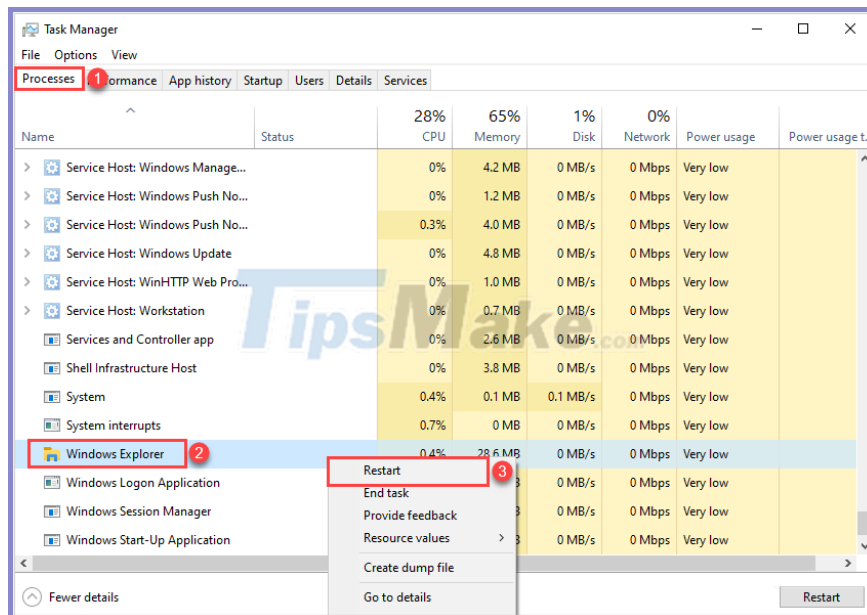
## 6. Restart the Windows interface

For some reason, in the process of using your Windows, you get an interface error that prevents them from receiving manual commands. To solve these problems, do the following:

Step 1: You proceed Right-click the Taskbar and select Task Manager.



Step 2: Then you select the Processes tab, find and right-click Windows Explorer to select Restart.



Step 3: Now, try shutting down your computer again to see the results.

## 7. Remove Viruses on the computer

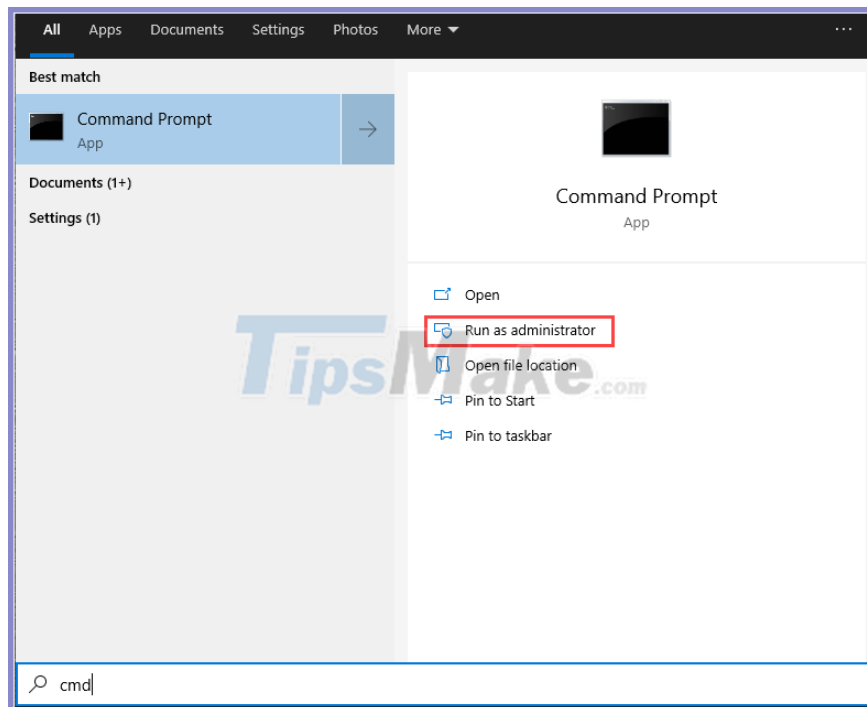


Currently, Virus / malicious code on the computer is developed very diversely and they can shut down your computer at any time by interfering with and controlling the operating system. To handle this problem you only need to use specialized anti-virus software to check your computer only!

## 8. Turn off the machine by CMD

In addition to turning off the computer through direct interface operations, you can also turn off the computer through the command in CMD. To turn off the computer by cmd, please do as follows:

Step 1: Open MenuStart, enter CMD and select Run as administrator to open.



Step 2: Then, you enter the command below and press Enter.

```
Command Prompt
Microsoft Windows [Version 10.0.18363.036]
(c) 2019 Microsoft Corporation. All rights reserved.
C:\Users\Siva>shutdown /s /f /t 0_
```

## 9. Reinstall Windows



If your computer often encounters an error that cannot shut down, it is best to reinstall Windows because your system has too many errors. The failure to shutdown is not due to the hardware, but they only revolve around software, namely the Windows operating system.

In this article, TipsMake has guided you 9 ways to fix the error that cannot turn off the computer quickly and effectively.

Good luck!

You finished reading the article "**How to fix the computer can not turn off**" edited by the [TipsMake](#) team. We hope this article has provided you with many useful tech tips and tricks. You can search for similar articles on tips and guides. Thank you for reading and for following us regularly.