

# How to fix the Circular Reference error in Excel

The error of the Circular Reference in Excel occurs when there is a certain formula added to itself.

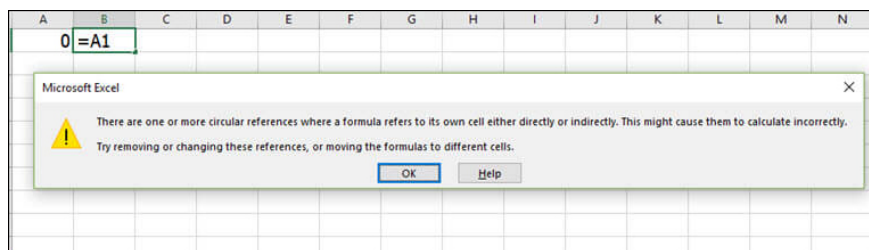
When processing an Excel data sheet, notice the Circular Reference error may appear in each cell or when the table has just been opened. In fact, this is not really an error on Excel but in the form of a notification, warning users with the main content has a loop in the calculation formula.

The loop in Excel calculations is basically not necessary when a round-the-clock calculation is required. So when a loop occurs, we always get a notification. However, some cases are required to use a loop, so depending on the situation we have ways to handle the above error message. The following article will summarize some ways to fix loop errors in Excel.

1. 10 ways to recover corrupted Excel files
2. How to fix Excel error 'The formula you typed contains an error'
3. 7 most common Excel errors for office people
4. How to fix the date #VALUE error in Excel

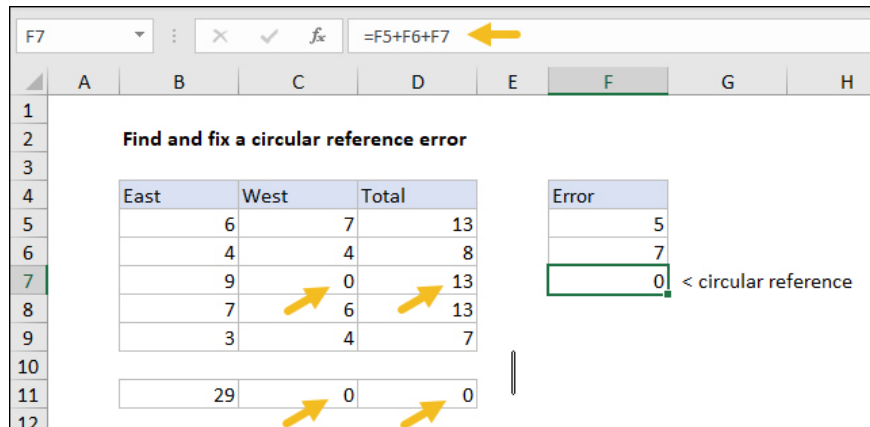
## Instructions to fix Circular Reference error in Excel

The loop error message on Excel has contents There is one or more circular references where a formula ch? có m?t b? nh? c?a nó không th? direct ho?c indirectly. Có th? có th? t?o không ?úng. ?ang th? g? b? ho?c thay ??i các tham s?, ho?c ?ang chuy?n ??i các bi?u th?c ??n các khác nhau



A loop error in Excel occurs when a formula in the cell references the correct cell. For example  $A1 = 25 + C1$ ,  $B1 = 10$   $C1 = A1 + B1$ . Or you can track loop errors in the image below.

Round this table, you will see the formula in cell F7 referring to cell F7. Then the formulas used in cells D7, C11 and D11 will be discarded.



### Step 1:

When a message occurs on us, we first click on **the Formulas item** and then click on **Error Checking** .

Picture 3 of How to fix the Circular Reference error in Excel

### Step 2:

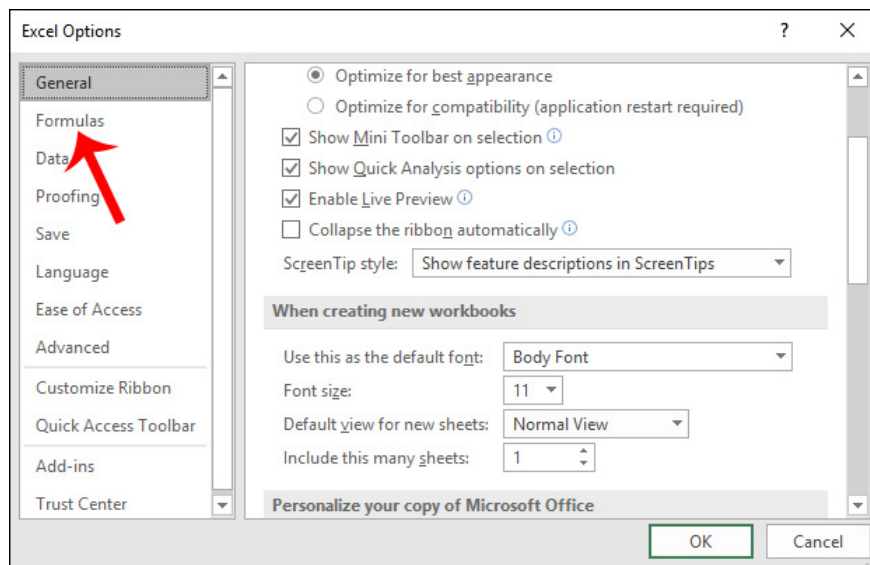
Display the menu list and click **Circular References** to check the formula, remove the loop references in the formula. You will immediately see the location of that loop error in the Excel table. After knowing the location you proceed to delete, transfer the formula, correct the reference in the formula.

Picture 4 of How to fix the Circular Reference error in Excel

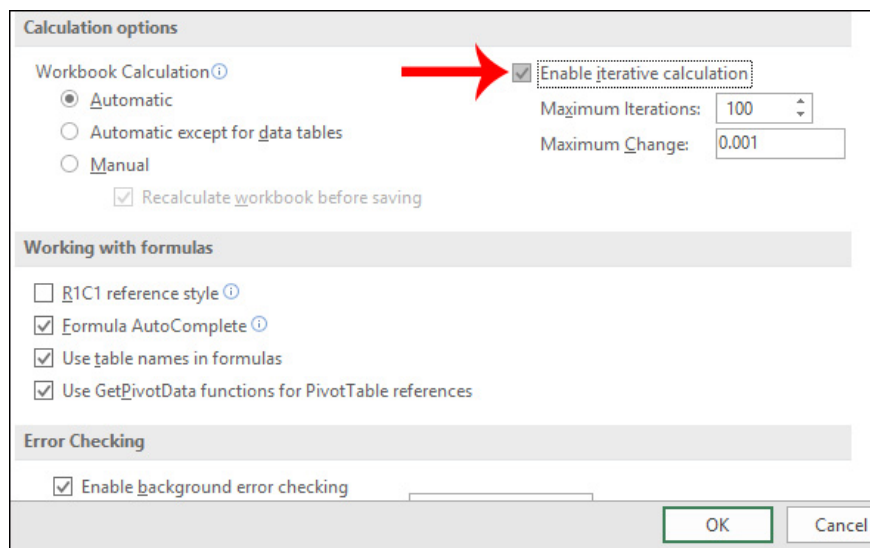
So the loop error has been fixed.

Picture 5 of How to fix the Circular Reference error in Excel

In case **the user is required to use a loop** to calculate, it is also possible to set the maximum number of loops to use. Click **File** on the **Excel** interface and select **Options** in the menu to the left of the interface. Next in the new content click on **the Formulas section** .



Looking at the content on the right, users **select Enable iterative calculation** to use the repeat calculation. Under **Maximum Iterations** section is the maximum number of loops used. Click OK to save.



So using loop in Excel can also happen depending on the content of the Excel data you are processing. If you want to use a loop, you first need to enable the option to enable a loop in the Options interface in Excel.

I wish you all success!

You finished reading the article "**How to fix the Circular Reference error in Excel**" edited by the [TipsMake](#) team. We hope this article has provided you with many useful tech tips and tricks. You can search for similar articles on tips and guides. Thank you for reading and for following us regularly.