

How to fix status_?invalid_?image_?hash error on Microsoft Edge

Your favorite browser is Microsoft Edge, but you always feel annoyed when you are surfing the web and there is a status_?invalid_?image_?hash error. Please click on the article to find out how to fix the status_?invalid_?image_?hash error.

You are a regular user of computers , laptops and Microsoft Edge is your favorite web browser, but you are bothered while surfing the web, and the error code status_?invalid_?image_?hash appears and you do not know how fix status_?invalid_?image_?hash on Microsoft Edge?. Don't worry this article will help you to fix the above error.

The first thing we need to know is that the error status_?invalid_?image_?hash is caused by websites with high-resolution images. Most of them are saved in a hash format (hash) and when you download them using the Edge browser, the images are not hashed. So sometimes because it can't load, it causes conflicts and creates errors.

1. Update Microsoft Edge

Microsoft Edge is Microsoft 's 'homegrown' browser, so it is regularly updated on both Windows and Macbook computers . The error status_?invalid_?image_?hash may be because the build table on your machine is too old.

Please update in the following way: Start Microsoft Edge > Setting > About Microsoft Edge and update to the latest version.

Note: This tutorial was made on Microsoft Edge version 90.0.818.51 (Official build) (64-bit) and English language. Later versions may change the way.

Picture 1 of How to fix status_?invalid_?image_?hash error on Microsoft Edge

2. Use Compatibility Mode

This is a small trick that can be applied on Windows 10 .

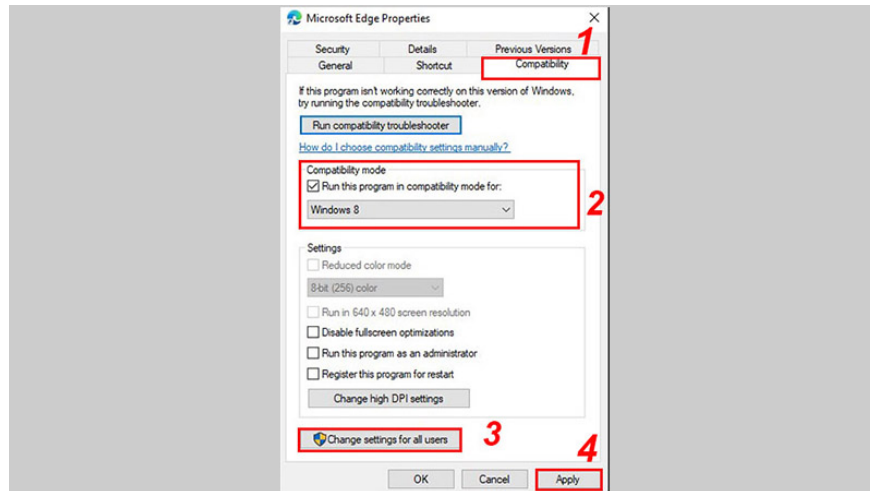
Step 1: Right-click on the Microsoft Edge icon and select Properties.

Step 2: Click on the Compatibility tab.

Step 3: Check the option Run this program in compatibility and then select Windows 8.

Step 4: Click on the Change settings for all users line, and then select Apply.

Step 5: Close the dialog box and restart the Edge browser.



3. Use the '-no-sandbox' command

Using the '-no-sandbox' command is also a solution. However, it should be noted that doing this way makes your browser vulnerable to hackers.

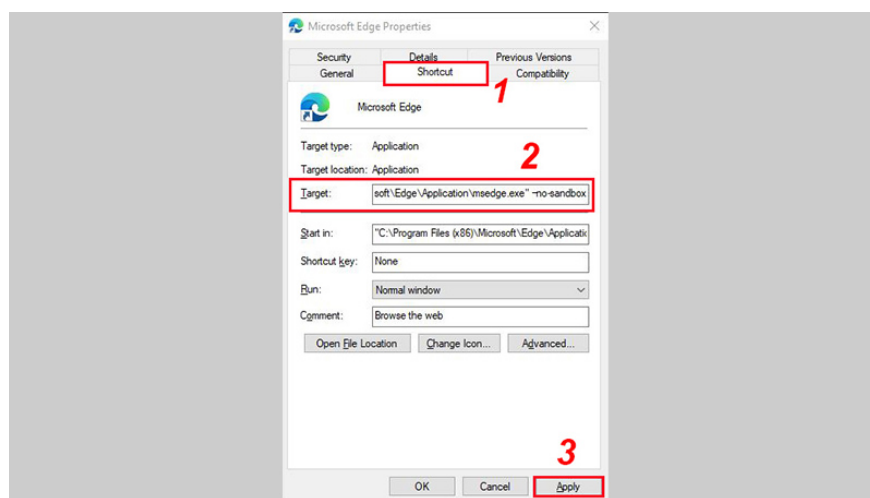
Step 1: Right-click on the Microsoft Edge icon and select Properties.

Step 2: Click on the Shortcut tab.

Step 3: In the Target box, enter the command line '-no-sandbox' (in addition to the quotes).

Note: Make sure to add a space between the .exe of the path with the first '-' in your statement.

Step 4: Select Apply, close the dialog box and restart Edge browser.



If the above two methods still do not solve the error, then go to the next method

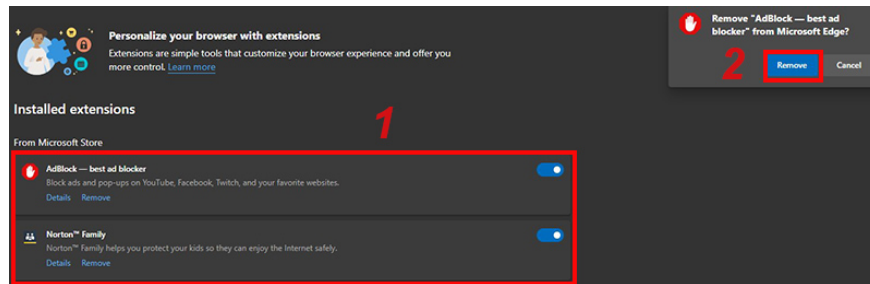
4. Disable Extensions

Microsoft Edge is built on the foundation of Chromium by Google, so it is fully compatible with the extension of Google Chrome. However, due to not being regularly updated, these utilities are no longer suitable for Edge and an error occurs.

If you have installed too many extensions by mistake and can't figure out which one is faulty, the best way is to disable them all. Then turn on the utilities you need to use.

Step 1: Click on the '.' menu on the Edge home screen.

Step 2: Go to the Extensions menu and select Remove on the extensions.



5. Switch Tracking Prevention to Balanced

Websites use trackers to collect information about your browsing. This information is used to improve websites, showing you content such as ads tailored to you. Some trackers even collect and send your information to websites that you have not visited. To work around this problem Microsoft has provided a default tracking prevention option to block trackers, harmful content, and ads.

This setting is set to 'Balance' by default, but if you've switched to 'Prevent' it may affect some of the websites you visit.

How To: Open Microsoft Edge browser > Settings > Privacy, search, and services > Balanced.

Picture 5 of How to fix status_?invalid_?image_?hash error on Microsoft Edge

6. Use InPrivate Browsing Mode

If you're still getting the status_?invalid_?image_?hash error on certain websites, try enabling private browsing using Ctrl + Shift + N, or going to the '.' menu on the desktop. Edge main > New InPrivate windows. Then use it normally.

Picture 6 of How to fix status_?invalid_?image_?hash error on Microsoft Edge

7. Clear data and cache

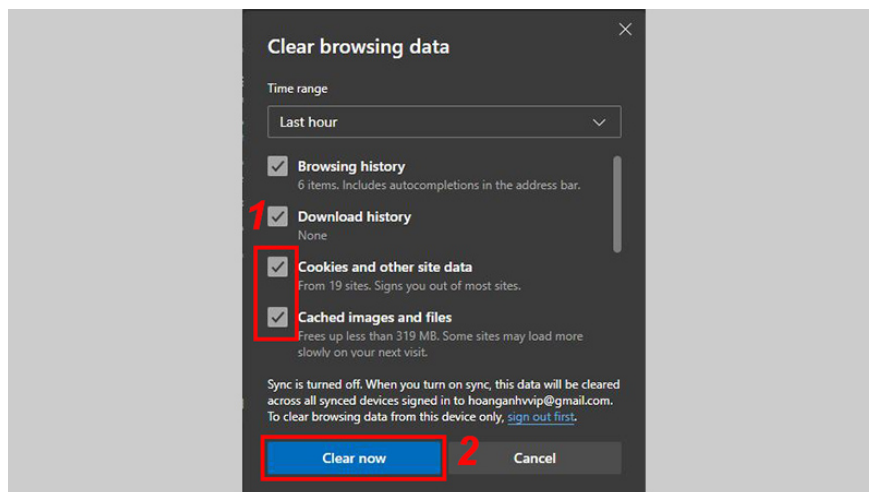
Excessive browsing data can cause conflicts with other Tabs on your computer, try clearing them in the following way:

Step 1: Click on the '.' menu on the Edge home screen.

Step 2: Select Settings then Privacy, search, and services.

Step 3: In the Clear Browsing data section, select Choose What to Clear.

Step 4: Select the box Cookies and other site data and Cached images and files in the Clear browsing data dialog box and then click Clear now.



Step 5: Restart Edge browser.

8. Uninstall and reinstall Microsoft Edge

If you've tried all of the above, but still can't fix the status_?invalid_?image_?hash error, try uninstalling and reinstalling Microsoft Edge.

So the above article helped you know how to fix status_?invalid_?image_?hash error on Microsoft Edge, hope it helps you. Hope you are successful.

You finished reading the article "**How to fix status_?invalid_?image_?hash error on Microsoft Edge**" edited by the [TipsMake](#) team. We hope this article has provided you with many useful tech tips and tricks. You can search for similar articles on tips and guides. Thank you for reading and for following us regularly.