

How to fix SSL connection errors on Chrome and Firefox

Occasionally, when you access the Internet with Chrome or Firefox, you find that the browser reports an SSL error that does not connect to the Internet. You are not sure what this is for? You can refer to the article below to fix this connection error.

Occasionally, when you access the Internet with Chrome or Firefox, you find that the browser reports an SSL error that does not connect to the Internet. You are not sure what this is for? You can refer to the article below to fix this connection error.

SSL stands for **Secure Sockets Layer** . This is a global technology security standard that creates an encrypted link between the web server and the browser. This link ensures all data exchanged between the web server and the browser is always secure and secure.

Most banking sites, social networks, e-commerce websites use SSL certificates. This certificate helps protect personal, financial and other information of users or shoppers. If you look, you will see that these sites all use HTTPS instead of regular HTTP.

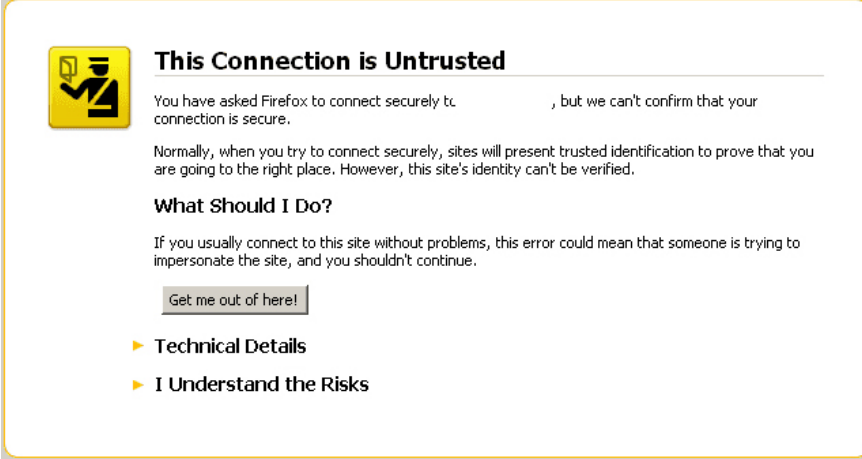
Sites that have HTTPS mean it uses Internet security protocols: SSL or TLS. Websites that use SSL encrypt all information sent and received, so it is safer. But why do you encounter an SSL connection error on Chrome and Firefox?

How to fix SSL connection errors on Chrome and Firefox

1. Types of SSL connection errors
2. The cause of an SSL connection error
3. How to fix SSL connection errors
 1. Temporarily access non-SSL pages
 2. Adjust the time on Windows
 3. Set up antivirus software to not scan SSL protocol
 4. Resolve issues of Google Chrome and Mozilla Firefox related to SSL errors
 5. Export and import the SSL certificate of the website

Types of SSL connection errors

This connection is Untrusted (This connection is not trusted)



This Connection is Untrusted

You have asked Firefox to connect securely to _____, but we can't confirm that your connection is secure.

Normally, when you try to connect securely, sites will present trusted identification to prove that you are going to the right place. However, this site's identity can't be verified.

What Should I Do?

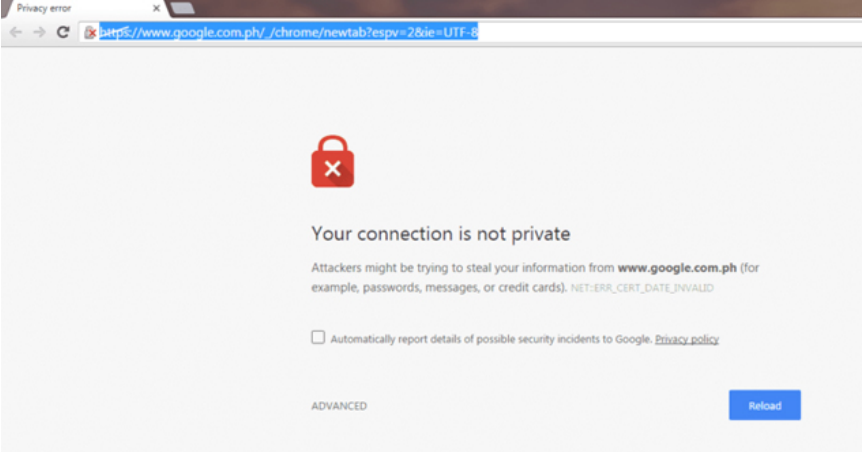
If you usually connect to this site without problems, this error could mean that someone is trying to impersonate the site, and you shouldn't continue.

[Get me out of here!](#)

- ▶ **Technical Details**
- ▶ **I Understand the Risks**


Your connection is not private (Your connection is not a private connection)

See also: Quickly fix 'Your connection is not private' error in Chrome browser



Privacy error

<https://www.google.com.ph/chrome/newtab?espv=2&ie=UTF-8>



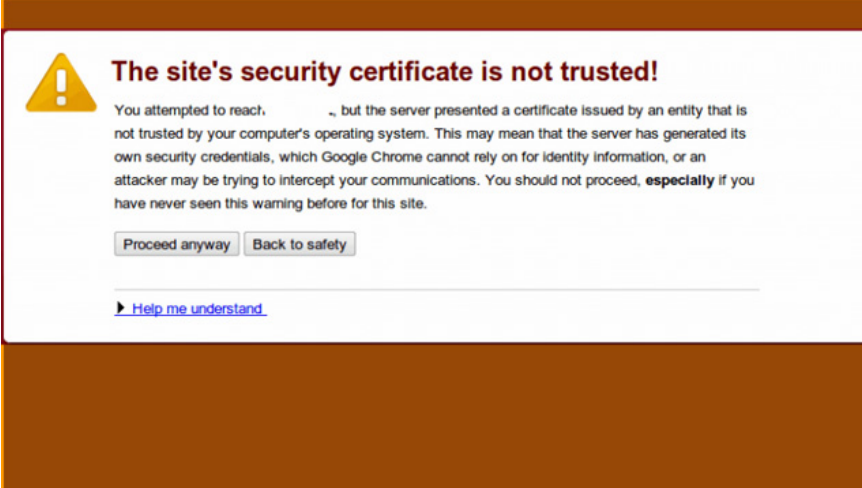
Your connection is not private


Attackers might be trying to steal your information from www.google.com.ph (for example, passwords, messages, or credit cards). NET:ERR_CERT_DATE_INVALID

Automatically report details of possible security incidents to Google. [Privacy policy](#)

ADVANCED [Reload](#)

The certificate security sites is not trusted (Site security certificate is not trusted)



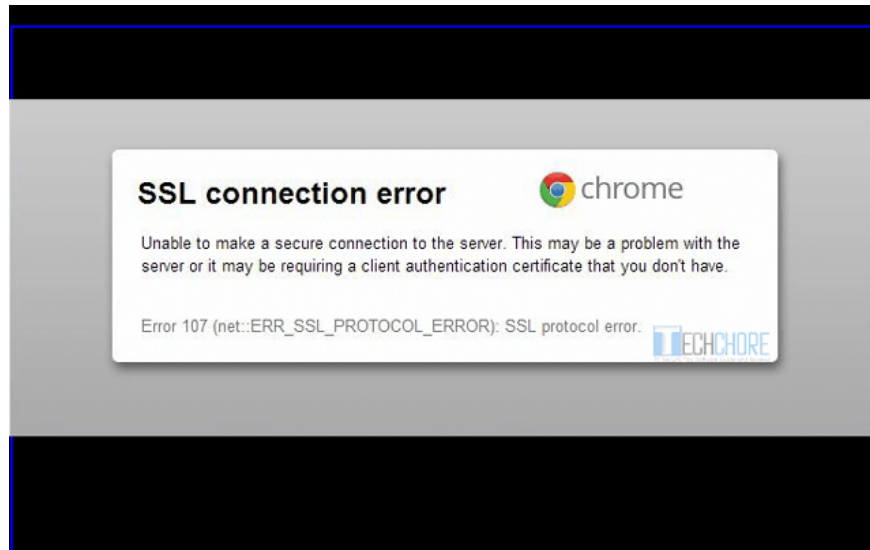
 **The site's security certificate is not trusted!**

You attempted to reach _____, but the server presented a certificate issued by an entity that is not trusted by your computer's operating system. This may mean that the server has generated its own security credentials, which Google Chrome cannot rely on for identity information, or an attacker may be trying to intercept your communications. You should not proceed, **especially** if you have never seen this warning before for this site.

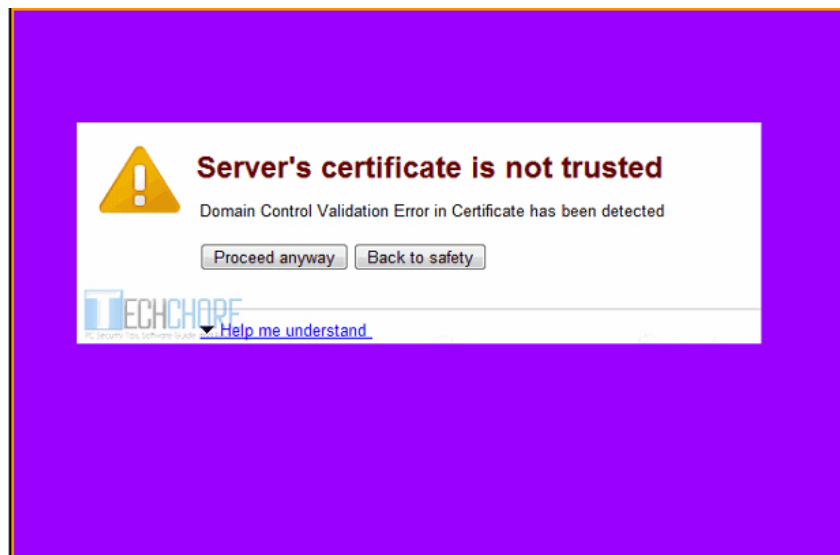
[Proceed anyway](#) [Back to safety](#)

[▶ Help me understand.](#)

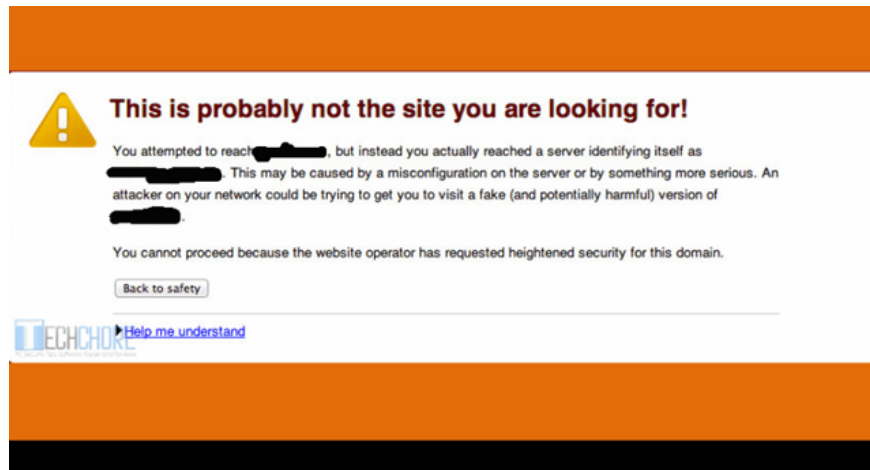
SSL Connection Error and SSL Protocol Error (SSL connection error and SSL protocol error)



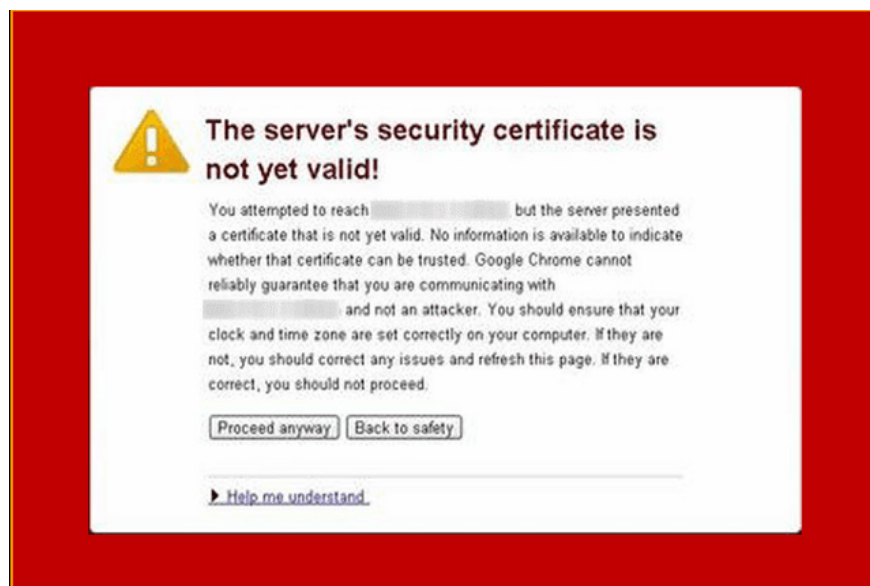
Server's certificate is not trusted (Server certificate is not trusted)



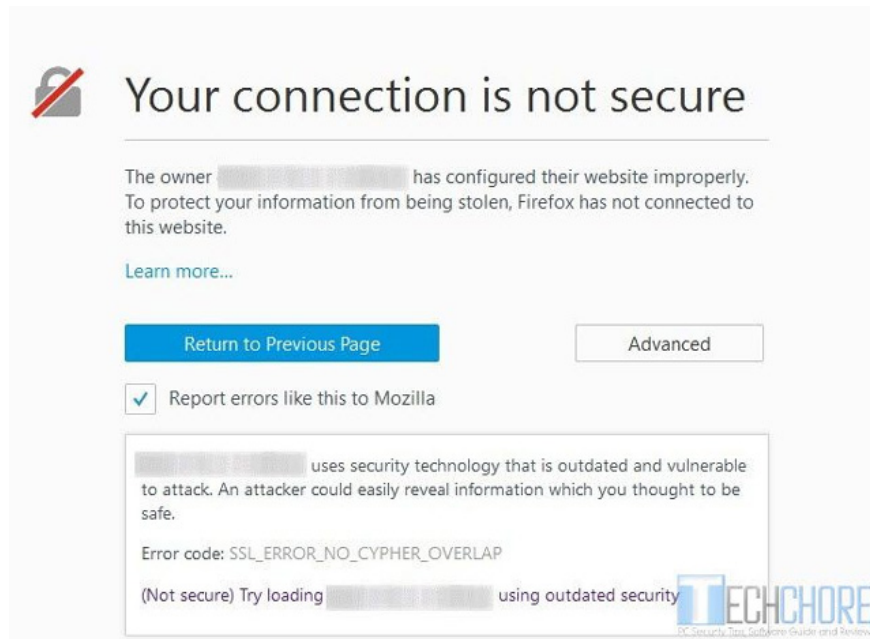
Có th? không có site b?n tìm th?y cho (This may not be the site you are looking for)



The server's certificate security is not yet valid (The server's certificate security is not valid)



Your connection is not secure (Your connection is not secure)



These types of SSL connection errors are just some of the errors in many other SSL errors that users may encounter. There is also ' **Your clock is behind** ' and ' **Certificate name and server mismatch** '. So what causes this error?

The cause of an SSL connection error

1. The date and time settings on the computer are incorrect. It may be 2 weeks, months or even years ahead of time.
2. SSL certificate name does not match, usually its domain name problem.
3. SSL certificate is not reliable.
4. The site may contain malicious files.
5. SSL certificate is from an unauthorized certificate provider.
6. Antivirus software may be blocking the site's encrypted data.
7. Firewall incidents.
8. Browser is the cause of the problem.
9. The browser imported all the data from the old Internet Explorer.

How to fix SSL connection errors

1. Temporarily access non-SSL pages

Depending on the browser and the browser version you are using, the error message will be different. Usually, on Chrome: You can click Advanced / Advanced> Proceed to name_trang_web (unsafe) / Handle name_rangeb (unsafe).

Please update your browser to the latest version:

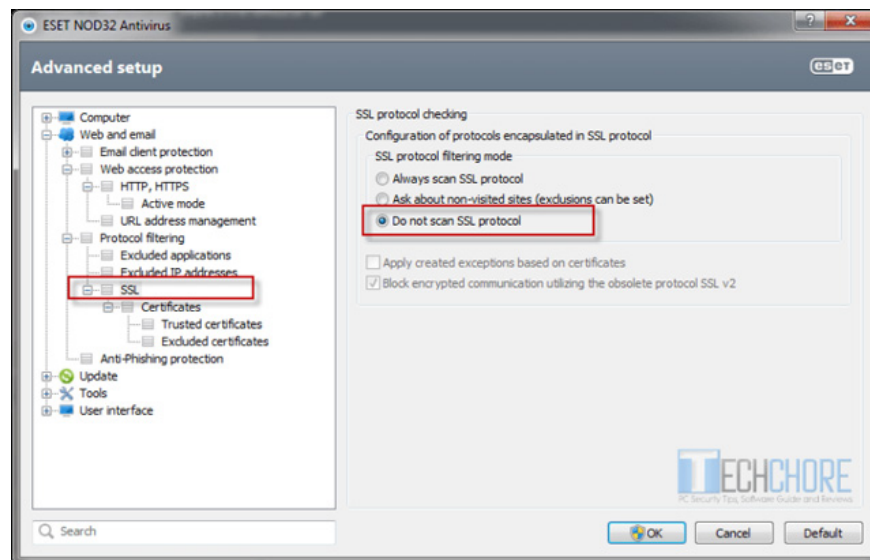
1. How to update Google Chrome to the latest version?
2. How to update Firefox to the latest version

2. Adjust the time on Windows

Incorrect time settings can cause SSL errors. Update the time and date to the correct time zone. If your time usually resets back years ago, replace the faulty CMOS battery. Then delete all browsing data for the changes to take effect in the browser. Refer to the article [How to change the hours, days and months in Windows 10?](#) to know how to do it.

3. Set up antivirus software to not scan SSL protocol

Depending on the different antivirus software will have different settings, but they have the following basic steps: visit **Set up**> **Advance setting**> **Protocol filtering**> **SSL**> **Do not scan SSL protocol** .



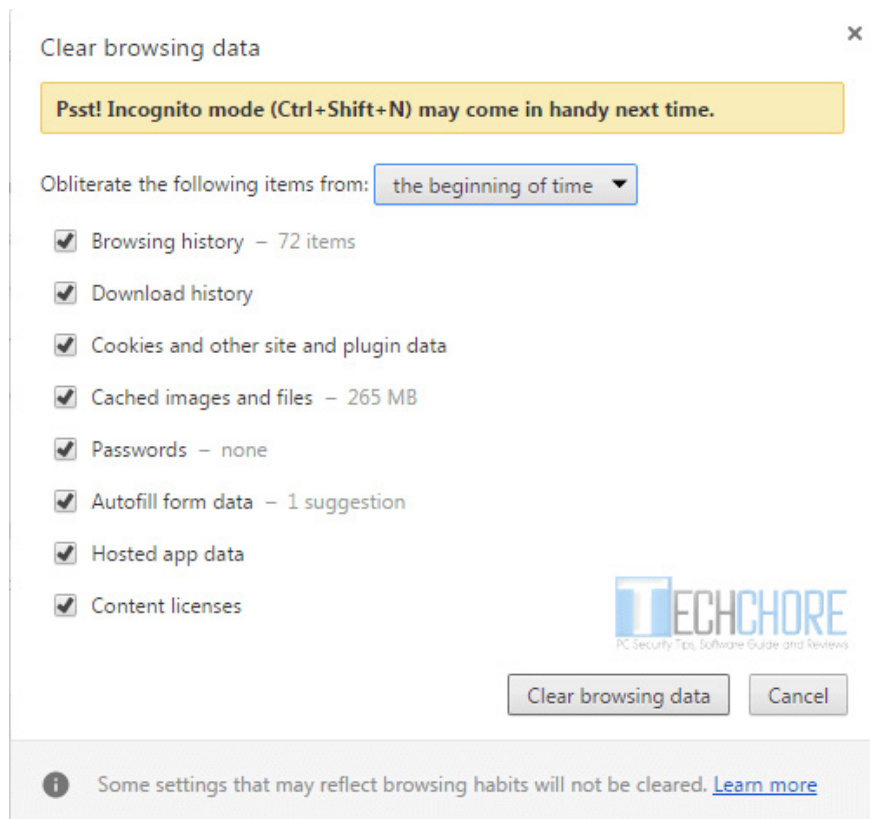
In some cases, conflicts between encrypted data and antivirus data are inevitable. If this solves an SSL error, try updating your Chrome or Firefox browser, antivirus software and operating system. Clear the browser data and try re-enabling the SSL scanner.

If you activate the SSL scanner after updating your browser, antivirus software and operating system, but it does not solve the problem, disable it, just browse the trusted site and contact the software vendor. antivirus.

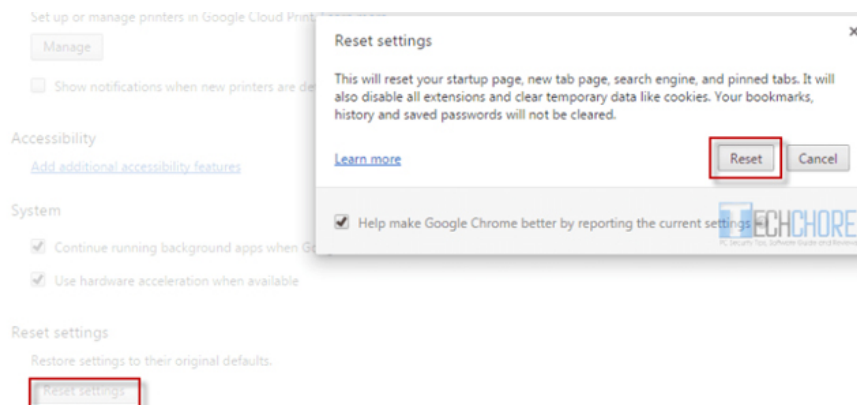
4. Resolve issues of Google Chrome and Mozilla Firefox related to SSL errors

1. Delete all browsing data (cache, cookies, stored application data, etc.). Then restart your browser.

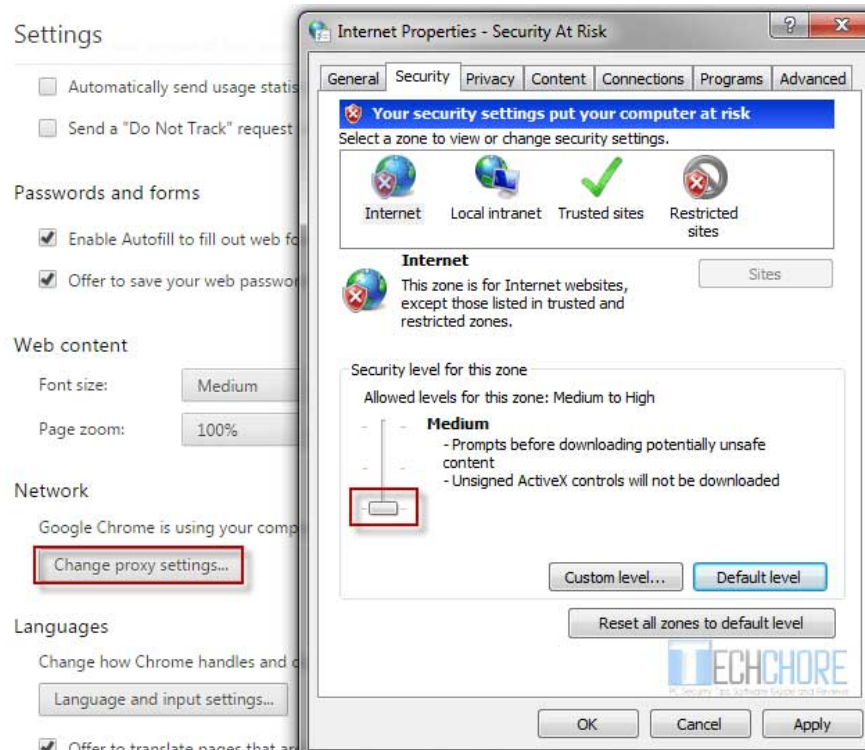
See also : [How to delete browsing history on Chrome 59 and Firefox](#)



1. Restore default browser settings, then restart the browser.

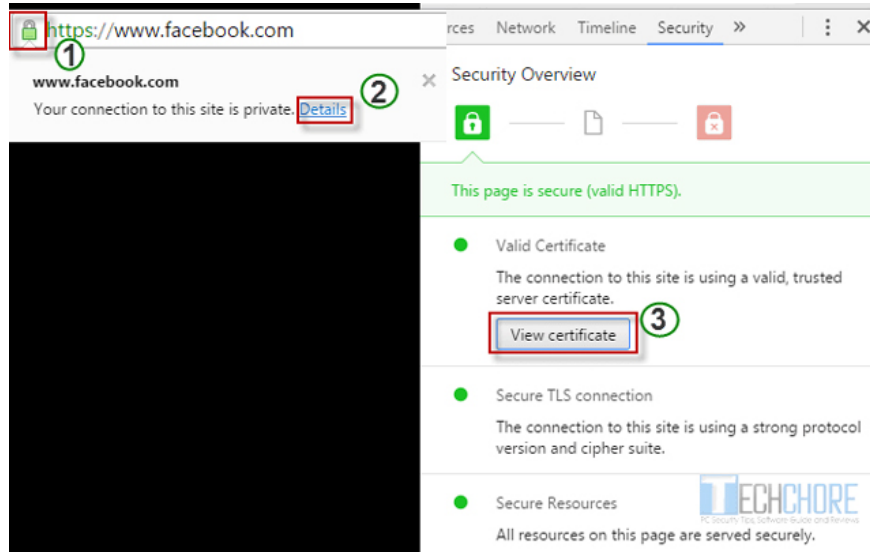


1. Navigate to your browser **Settings** > select **Change proxy** . In the **Security and Privacy** tab, adjust the medium level.

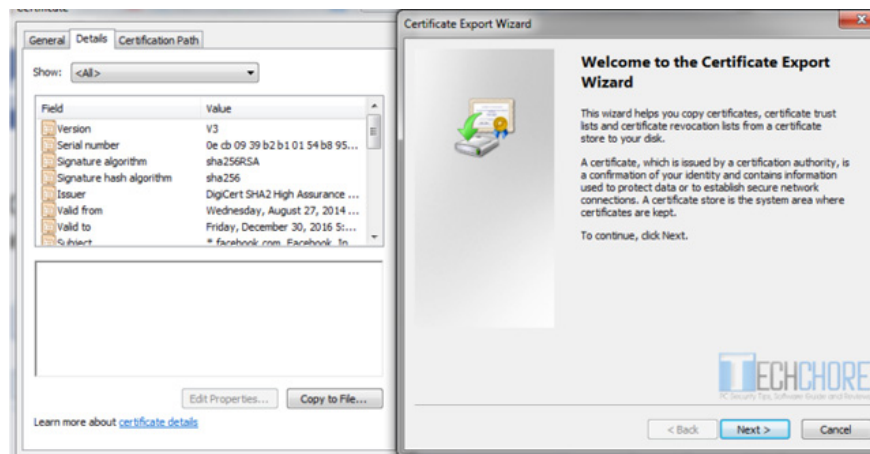


5. Export and import the SSL certificate of the website

Step 1. Click on the lock icon> select **Details** > **View certificate** .



Step 2 . Select the **Details** tab> click **Copy to file** > follow the instructions.



In Firefox, you need to follow the same process by clicking the lock icon> select the arrow> **More Information** > select **View certificate** > **Tab Details** > select **Export** (in Firefox Quantum).

Enter the SSL certificate by clicking Options> Advanced> View certificate> Import. Then restart the browser and see if the SSL connection error has been fixed.

I wish you all success!

See more:

1. How to view SSL certificate details on Chrome browser?
2. 7 reasons your website needs an SSL certificate
3. Quick fix "This site can't be reached" error on Chrome browser

You finished reading the article "**How to fix SSL connection errors on Chrome and Firefox**" edited by the [TipsMake](#) team. We hope this article has provided you with many useful tech tips and tricks. You can search for similar articles on tips and guides. Thank you for reading and for following us regularly.