

# How to fix some errors connecting TV to laptop via HDMI port

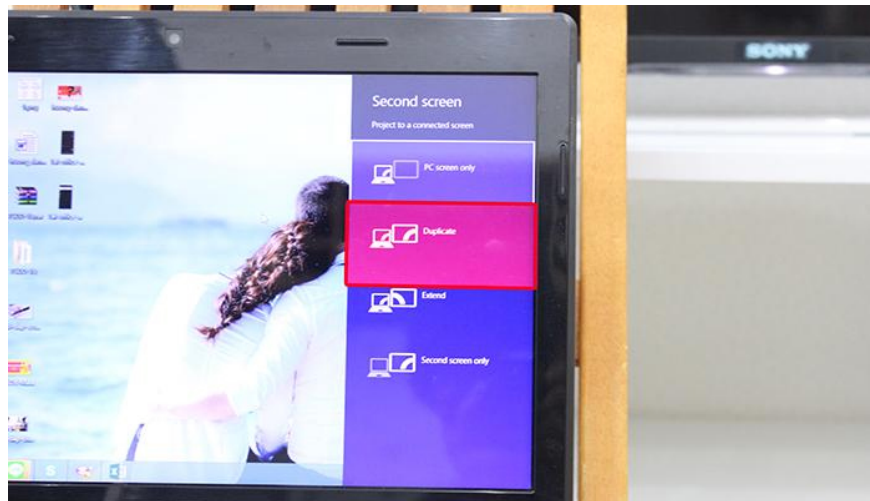
This HDMI port is currently the most popular connection between television and laptop. However, when connecting the two devices via HDMI port, you will encounter some errors. So how can we overcome them?

To be able to transfer images from computer to TV, HDMI port is the most popular and most used connection port. Through the plug, we can transmit all images from laptop to TV quickly. However, during the connection process, you will encounter some errors such as not receiving images, not receiving audio, . This will affect our work. In this article, we will list some common errors when connecting the TV to the computer via HDMI and how to fix it.

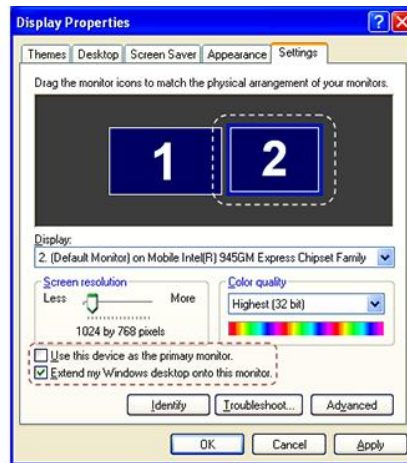
## 1. The TV error does not receive a laptop, does not receive images:

This error is very common when we proceed with the process of connecting via HDMI. Please check if the connector is correct, or plug in the port properly. If you have checked and adjusted and still do not receive the image, try the following:

With Windows 7/8/10 PC: press **Windows + P** key and select **Duplicate** .



With Windows XP computer: select **Control Panel> Display> Display Properties> Settings** . Then select the parameters as shown below and click **OK** to save.



## 2. The TV does not display content:

When connecting 2 devices via HDMI port and selecting Duplicate / Settings, the TV screen still does not receive the signal, no content appears.

In some TV lines today offer more HDMI ports. If we do not receive the correct connection with the HDMI port number that is plugged in, also causing the TV to not receive content.

First, check if the HDMI port you are plugging in has any symbols.

On the TV, press the **Inputs** button , **Source**, or **arrow icon** depending on the TV line. Next **select the corresponding HDMI port** . For example, if we plug the cable into an HDMI port 1 / MHL, press the correct port at the list on the television.



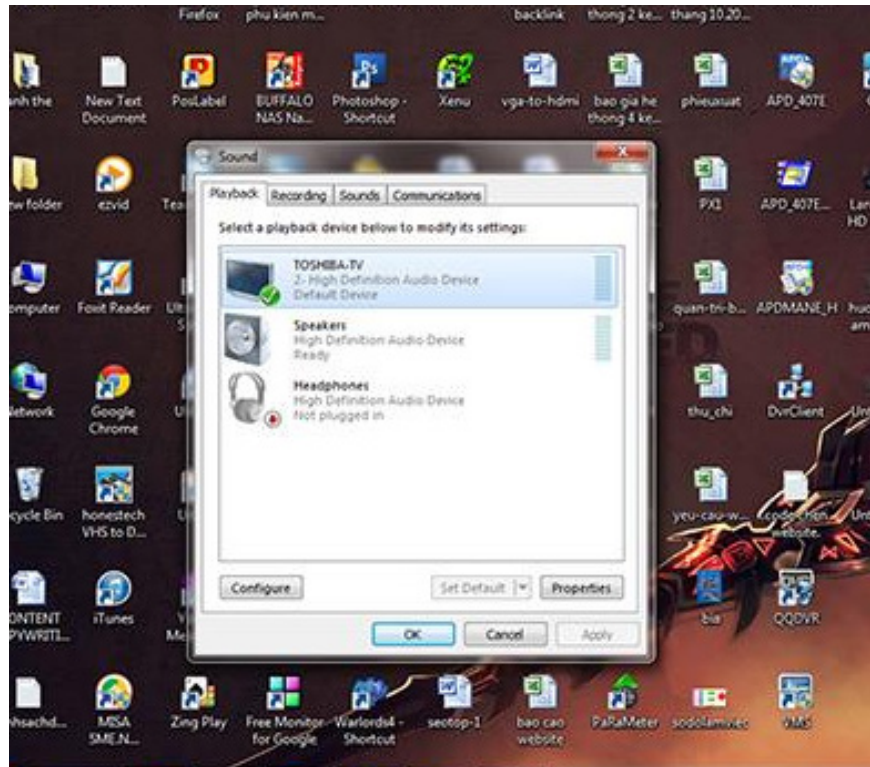
## 3. Photos on narrow TV compared to laptops:

This error is because we adjusted the ratio of non-standard TV images to laptops. Click the Size button on the control, or go to **Settings> Images> TV aspect ratio** , select the 16: 9 aspect ratio.

## 4. HDMI connected TV does not accept voice:

Let's try the following cases to re-adjust the connection.

Check if the laptop has sound turned on. Go to **Control Panel> Sound> Playback** . Select the sound broadcast icon as TV, click **Set Default** and then press **OK** .



Check the sound on the TV, sound on the top lap or video with sound or not. If we have checked the above devices and still have no sound, it may be because the HDMI cable is having problems. Try switching to another HDMI cable.

These are some of the most common errors when we connect TVs to laptops via HDMI. Please check if your home TV encountered any error to find ways to fix it soon.

### Refer to the following articles:

1. How to connect a laptop to a TV using an HDMI port
1. What is the HDMI (ARC) port on TV used for?
1. Instructions on how to increase processing speed for Smart TV

**I wish you all success!**

You finished reading the article "**How to fix some errors connecting TV to laptop via HDMI port**" edited by the [TipsMake](#) team. We hope this article has provided you with many useful tech tips and tricks. You can search for similar articles on tips and guides. Thank you for reading and for following us regularly.

