

How to fix some common webcam errors

Some common webcam errors: blurred, cannot find the camera, reverse camera, camera suddenly turned off, black, ... everyone can fix it at home easily.

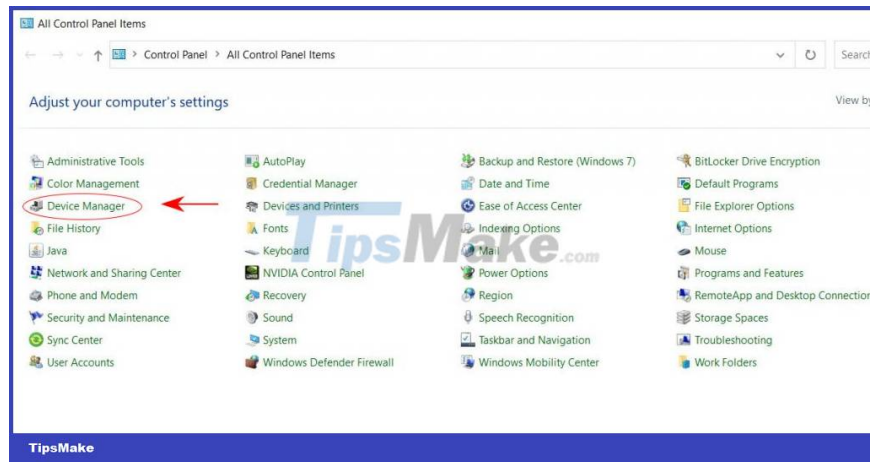
Webcam error is a common error with both separate webcams and built-in laptop webcams. Here TipsMake will guide you how to fix common webcam errors.

1. Error "No webcam detected"

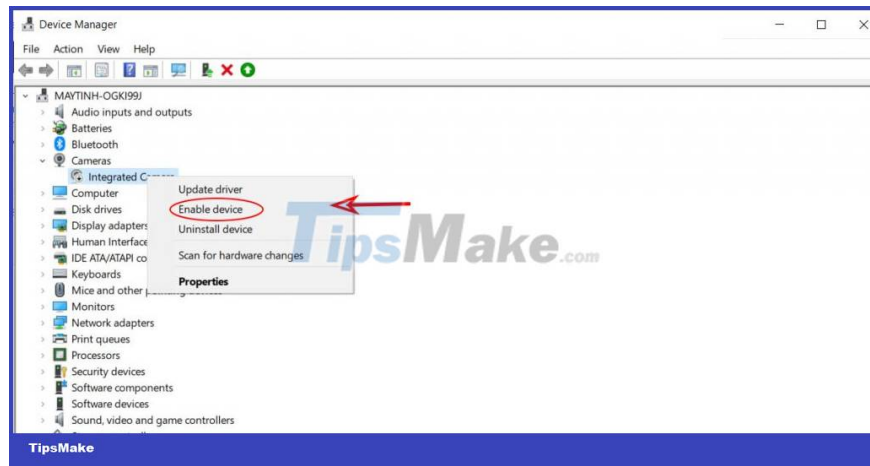
This error usually occurs because the driver of the webcam is faulty or the driver has not been installed. 2 ways to help you install the webcam driver as follows:

Method 1: Activate the webcam driver

Step 1: Access Control Panel -> Device Manager



Step 2: Select Cameras -> right-click Integrated Camera -> Enable device

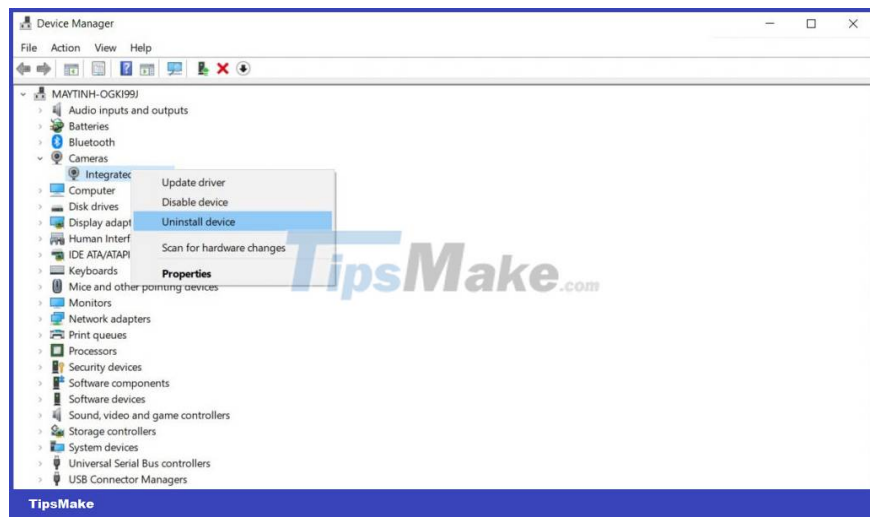


Please check the cam, your webcam is already working. If the webcam still fails, you can switch to method 2 below.

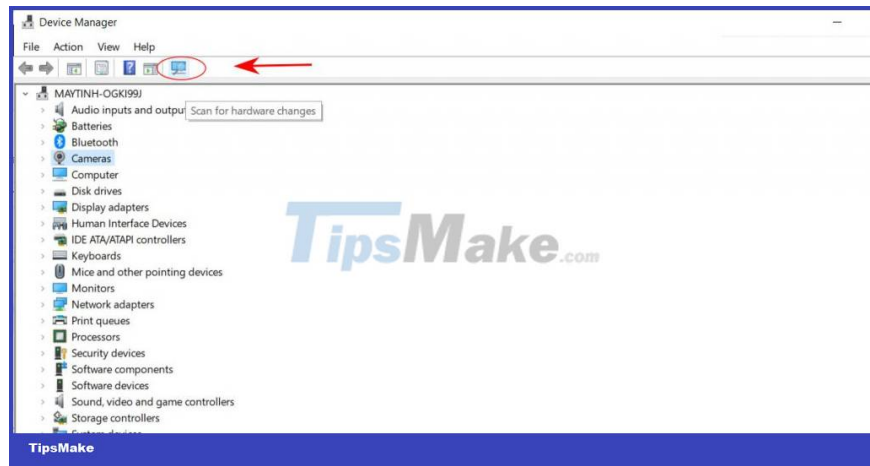
Method 2: Update Driver

Step 1: Go to Control Panel -> Device Manager

Step 2: Select Cameras -> right click on Integrated Camera -> Uninstall device



Step 3: After the uninstall is complete, click on the icon on the following toolbar to let the computer update the driver automatically.



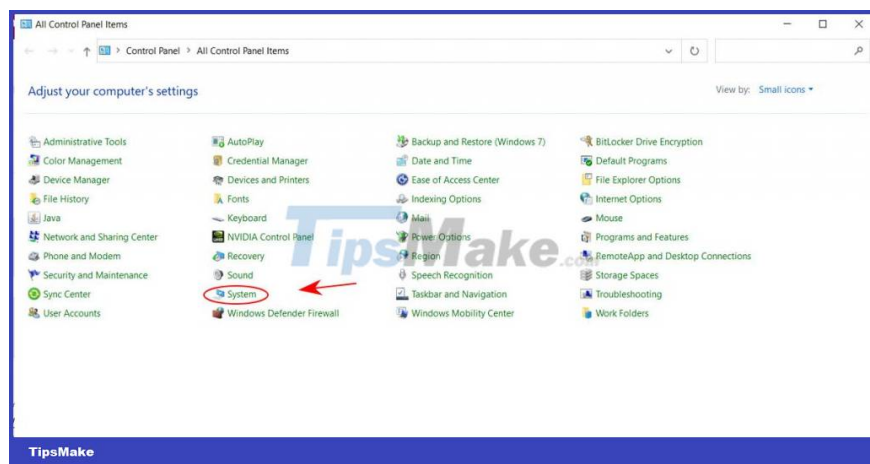
2. Error webcam suddenly turns off when in normal use

You are using the camera: video call, online learning, . is suddenly turned off. It may be because you accidentally clicked the camera shortcut, the computer is often equipped with a shortcut / camera shortcut. Turn it on by pressing the Fn key + 1 key with the camera icon on the keyboard.

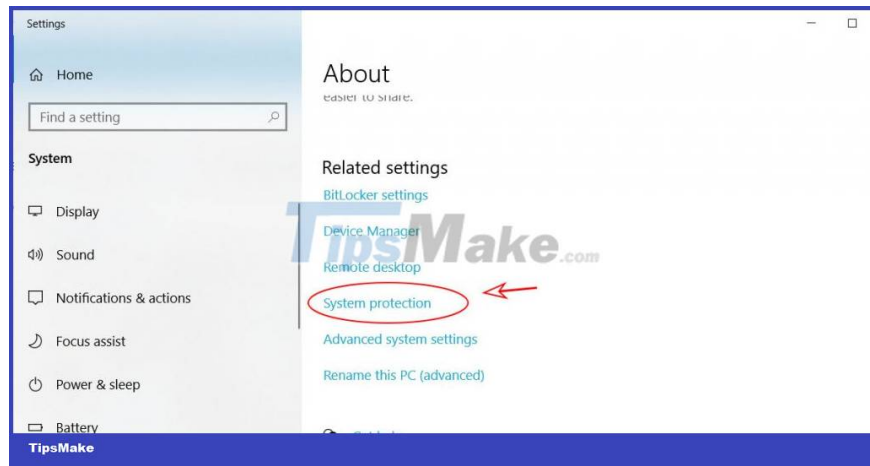
3. Webcam error is black, can't make calls

This case may be due to an operating system error, you can use System restore to fix it. System restore will restore the computer to the previous settings before the webcam failed to be able to continue using. When choosing when to return the device to factory settings, choose 2 days before the webcam is down. Follow these steps:

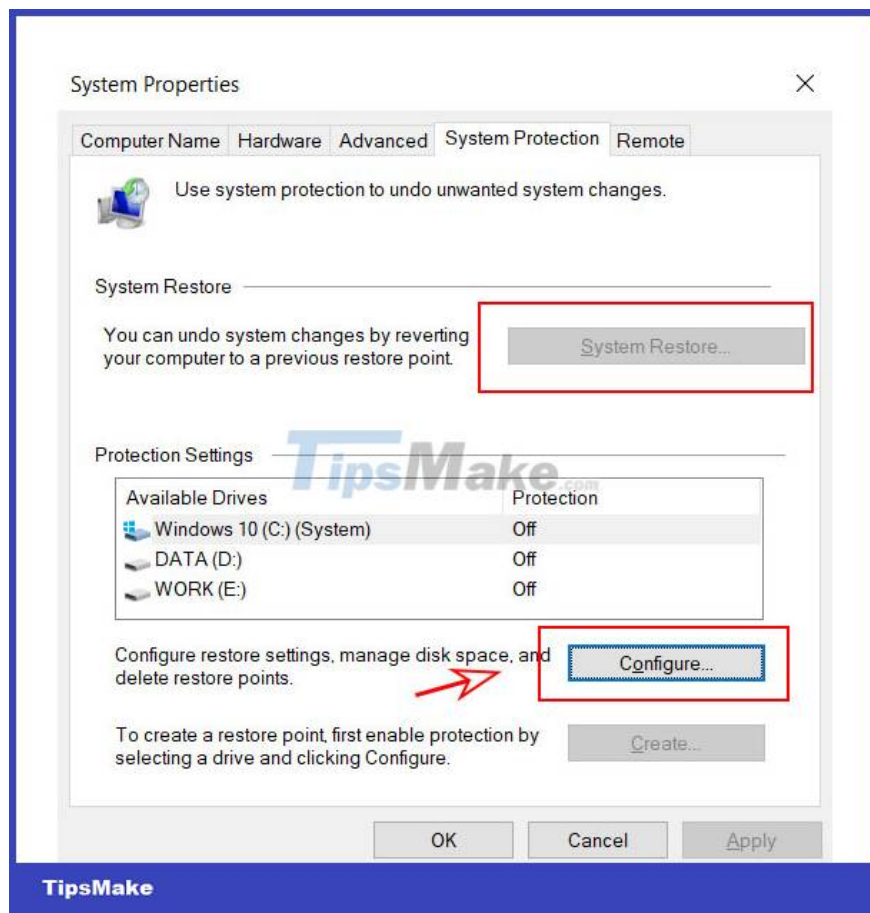
Step 1: Access Control Panel -> System

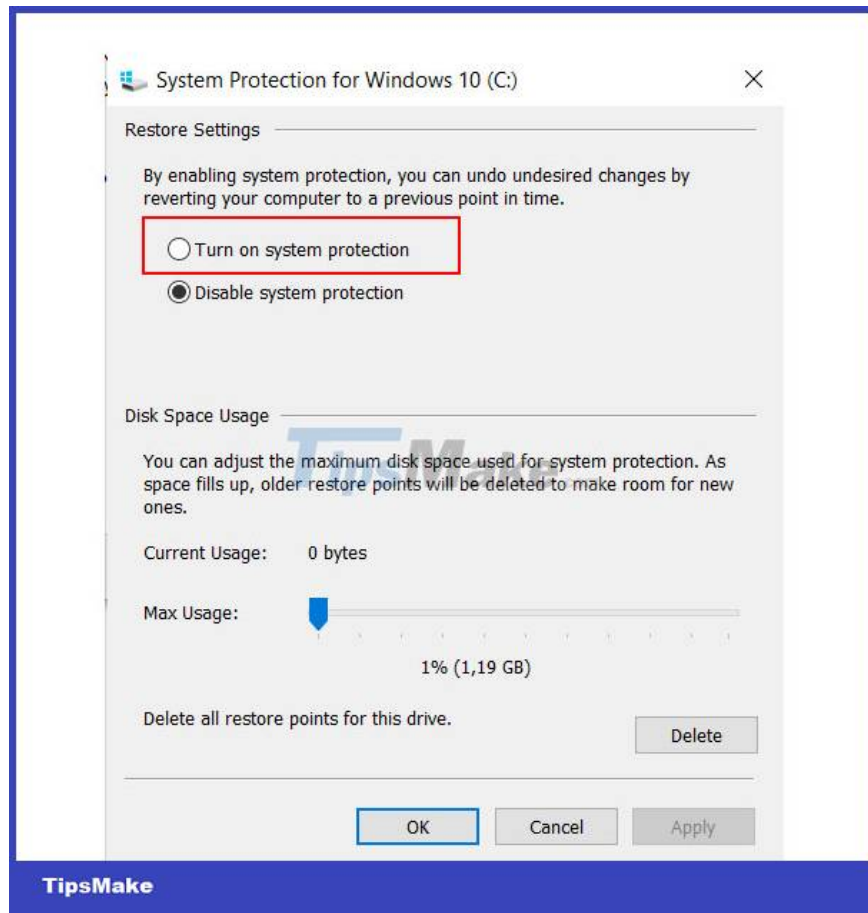


Step 2: System interface is displayed, select System protection



Step 3: The System Properties window appears, select System Restore. In Windows 10, System Restore is disabled by default, you need to enable this feature yourself: Click Configure -> select Turn on System protection

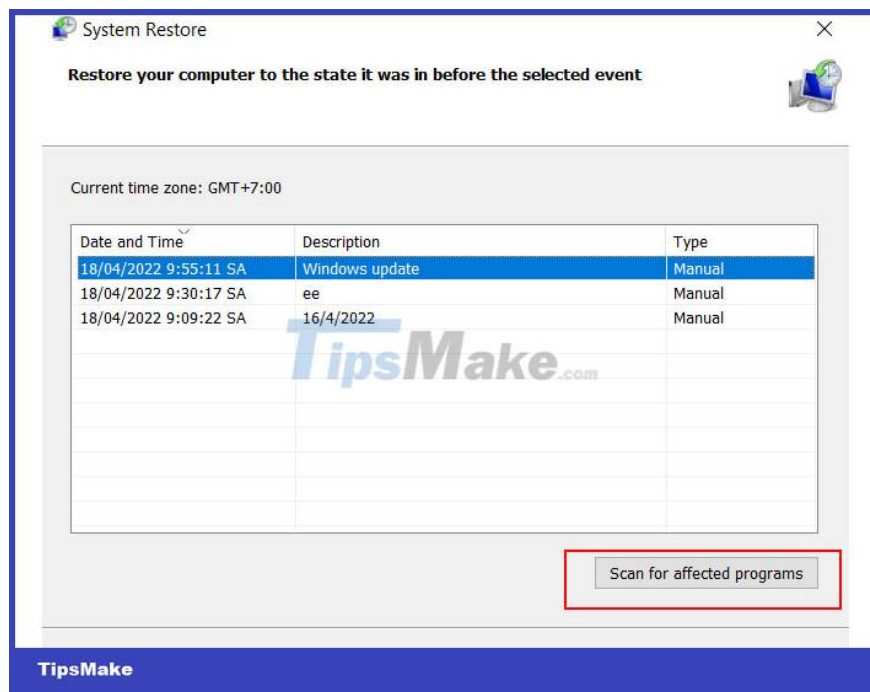




Step 4: Let's create a system restore point: Select Create -> give the restore point a name (name it easy to understand so you can use it later)

Let's start the recovery! Click System Restore to perform a point-in-time restore.

If you want to see the list of affected programs and drivers. Use the 'Scan for affected programs' feature that appears when you choose when to restore during System Restore.



When using System Restore, it will only restore your system files and settings. It does not affect any documents, pictures, videos, batch files or other personal data stored on the hard drive. You don't have to worry about any files being deleted. Only recently installed programs and drivers can be uninstalled.

4. Blurred webcam error

– Due to long-term dust clinging to the toilet or dusty computer screen.

Fix: We use a soft cloth to avoid scratching the lens and wipe the outside of the lens. If the inside of the lens of the lens is dirty, we disassemble the outer visor to clean it. In case the camera is still under warranty, please notify the warranty staff to fix it.

– The quality of the toilet is not guaranteed, poor quality

Just purchased, the camera is still sharp. After about 5-6 months of use, the image quality goes down significantly, check there is no dust, this is the cause of the blurred camera phenomenon. That's because we use poor quality cameras. Many people who love cheap things easily happen to this situation, which is a waste of time and money. Please change the location with another camera, if it doesn't work, bring it in for warranty or buy a new camera.

– Due to poor quality signal wire

Camera signal wire runs on coaxial wire (TV antenna wire for analog cameras, standard network wire if using ip camera). If you run with a bad network cable, the phone cord may be the cause of the camera's blurry camera.

Fix: We should run the signal wire with copper core coaxial wire, oiled outside to give the best picture signal. With ip camera, you should run to Vinacable's network

– Use Camera with different technology: Use the right camera technology to avoid blurring the image, which affects the durability of the camera.

5. The webcam image is upside down

The cause and how to fix it:

– Due to the settings in online calling software, livestream or online meeting software.

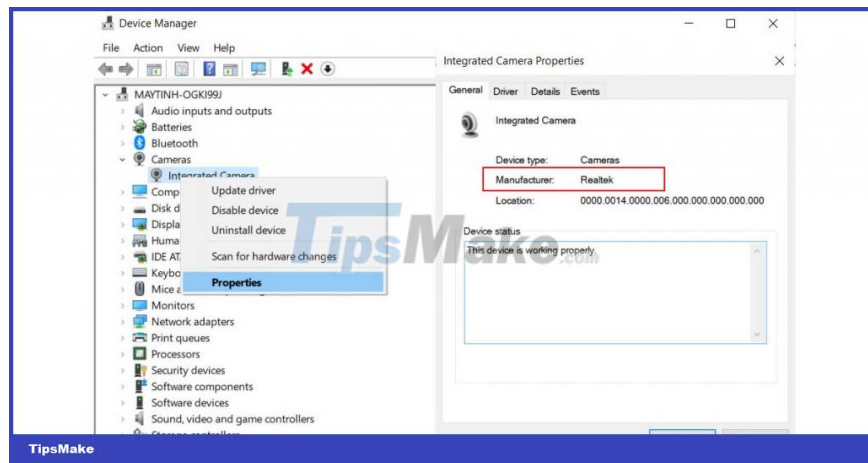
Fix: Reinstall webcam in faulty software. Reset Camera settings, maybe turn off rotate options, flip.

– Because the software is not compatible with the computer's operating system

Fix: Please remove the software and reinstall the more appropriate version. Before downloading and reinstalling software, carefully read the computer requirements for that software to make sure you have the most appropriate version for your computer.

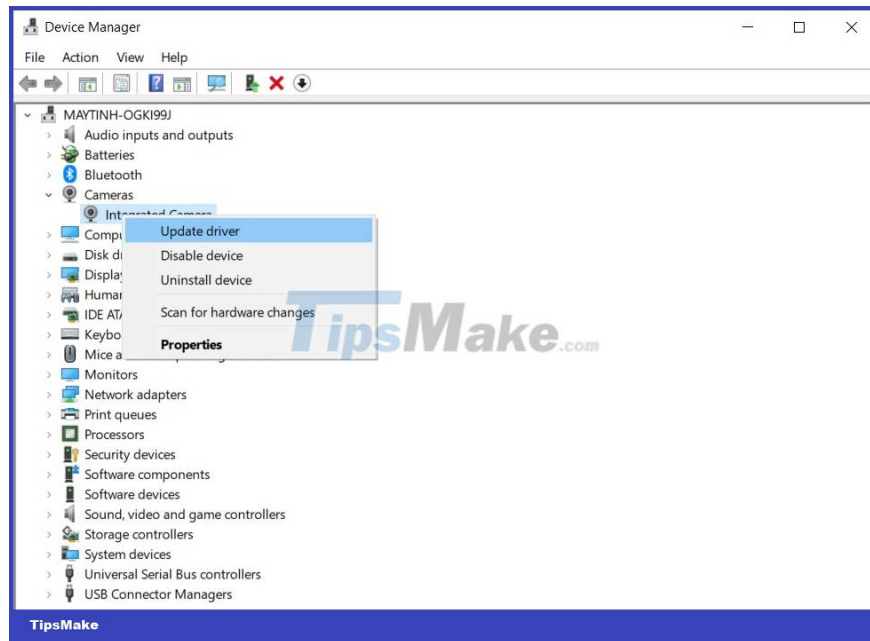
Fix by reinstalling Webcam Driver

In the event that the above errors cannot be fixed, it may be because the driver of the webcam is not compatible with the operating system, please reinstall the driver. In order to download the webcam driver correctly, you must review what company the webcam is using, and what product symbol it is.



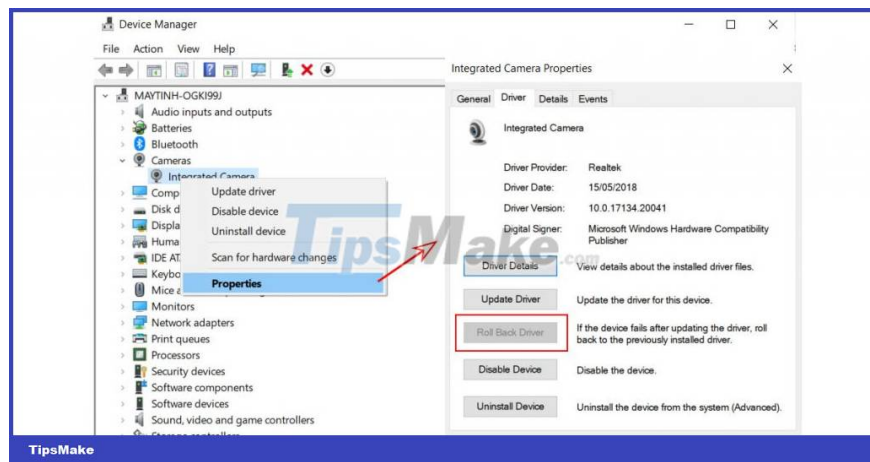
After you have determined the type of webcam you are using, you can search the manufacturer's website to update the latest driver version to fix webcam errors. Make sure you have removed the old version by 'Uninstall device', then reboot your device and proceed with the download.

Or more simply, if your computer has downloaded from the manufacturer's official website, you just need to go to the name of the webcam driver you use and select the 'Update driver' item.



After you have downloaded the driver, follow the instructions during the installation process. After the installation is complete, restart the computer to apply that driver.

In case, reinstalling and still having the error, the cause may be due to the updates. Go to Control Panel->Device Manager to perform Roll back driver to restore the old driver.



This article has outlined common webcam errors, hopefully will help you solve your problem. If you are looking for a webcam for yourself, please contact BenComputer for advice, to buy genuine and reputable webcam.

You finished reading the article "**How to fix some common webcam errors**" edited by the [TipsMake](#) team. We hope this article has provided you with many useful tech tips and tricks. You can search for similar articles on tips and guides. Thank you for reading and for following us regularly.