

How to fix slow responsive keyboard errors on Windows 10

Are you having trouble using the keyboard because typing is laggy or the keyboard response is very slow? Latency when entering information from the keyboard is one of the common problems you encounter when working on Windows systems

Poor keyboard performance is mainly due to lack of memory and system resources, the article will introduce some tips to fix this error.

Launch the System Maintenance

Sometimes cleaning out unused files and shortcuts will help you troubleshoot software problems, often causing keyboard malfunctions. Doing:

- Go to Control Panel > Troubleshooting.
- Navigate to the System and Security section and click on the Run Maintenance Task option.
- Follow the instructions to run the system maintenance troubleshooter.

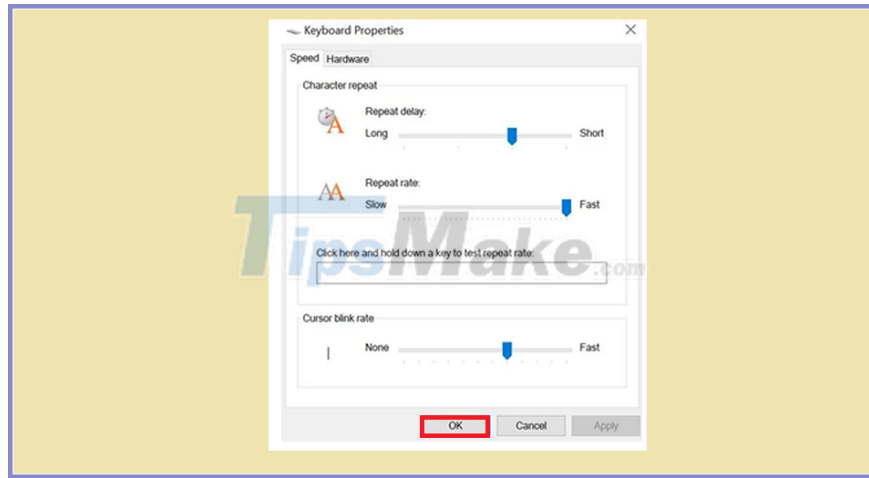
Once done, check to see if the issue has been resolved. If not, try the next step.

Adjust the Character Repeat parameter in Keyboard Properties

Character Repeat rate is a parameter that shows the delay value of character display when you type. Sometimes this parameter improperly adjusted can also make you feel the keyboard response is delayed. Doing:

- Press the key combination Windows + R.
- In the Run dialog box, type control keyboard and press Enter.
- In the Keyboard Properties window, click the Speed tab.
- Next drag the slider at Repeat rate to the highest level. Finished click OK.

Then check that the keyboard is working properly again. If not, try the next step.



Adjust the Repeat rate parameter to speed up the display of characters

Turn off Filter Keys

- Press the Windows + I key combination to open the system setting window.
- Open Ease of Access, then select Keyboard in the left menu column.

Finally turn off the Use Filter Keys option.

Use the DISM tool

- Open Start menu, search for Command Prompt application (cmd) and launch it as Administrator.
- In the command line execution window, type: `DISM.exe /Online /Cleanup-image /Restorehealth` and press Enter.

After completing the test, close the Command Prompt window and reboot the system.

```
Administrator: Command Prompt - DISM /Online /Cleanup-Image /RestoreHealth
C:\WINDOWS\system32>DISM /Online /Cleanup-Image /RestoreHealth
Deployment Image Servicing and Management tool
Version: 10.0.17134.1
Image Version: 10.0.17134.1006
```

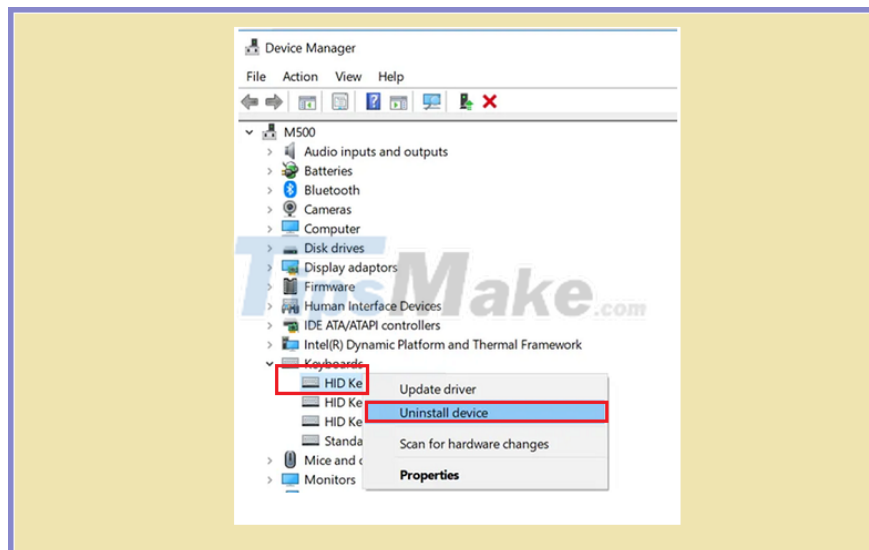
Create a new user account

If you still cannot fix the error, try creating another account on the system to use. Most likely the files in the account's profile are damaged, so try creating a new account to use.

Reinstall keyboard driver

- Press the key combination Windows + X, then choose Device Manager> Keyboard.
- Expand Keyboard options, right-click on the device name of the keyboard and choose Uninstall.

Then reboot the system to apply the change, then try to check if the keyboard is working quickly again.



Use Clean Boot mode

- Press the Windows + R key combination, enter the keyword msconfig and press Enter.
- On the General tab, select the Selective startup line, then check the 2 boxes Load System services and Use original boot configuration.
- Select next through the Services tab, select the option Hide All Microsoft Services. Done, press the button Disable all.
- Click the Startup tab and click Open Task Manager. Turn off Task Manager and click OK to save the settings.

Finally restart the machine to check.

You finished reading the article "**How to fix slow responsive keyboard errors on Windows 10**" edited by the [TipsMake](#) team. We hope this article has provided you with many useful tech tips and tricks. You can search for similar articles on tips and guides. Thank you for reading and for following us regularly.