

How to fix slow boot Windows 10

How to fix slow boot Windows 10. After a long time of using, you will probably feel your computer boots slower than before. So how to improve the condition of slow booting, please follow along

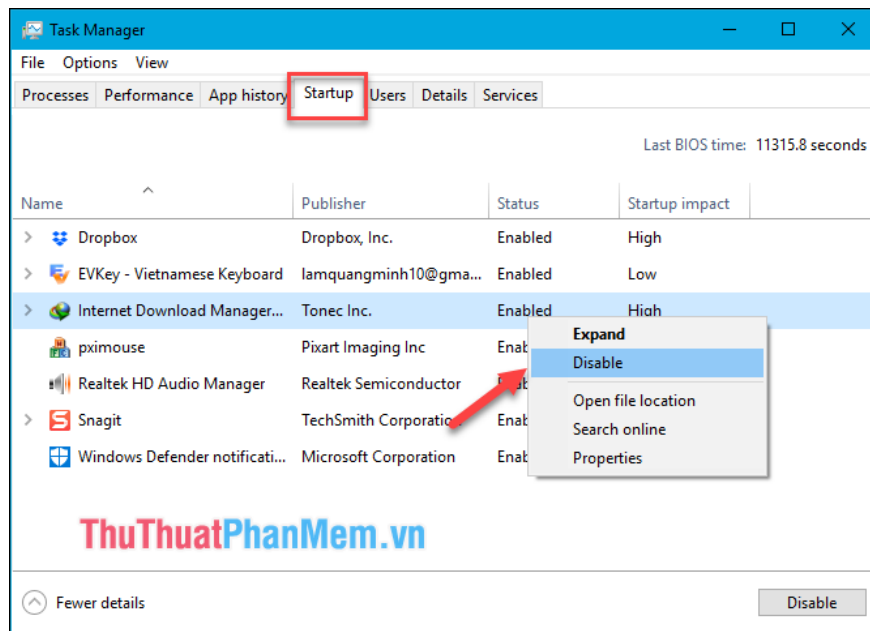
After a long time of using, you will probably feel your computer boots slower than before. That may be because your computer is installing a lot of software and they usually start automatically when you turn on your computer, because your computer is infected with a virus, or your hard drive is bad.vv. So how to improve the situation of slow booting of the computer, please follow along with the following tutorial of TipsMake.com.

1. Turn off applications that start with Windows

When you install the software on your computer, there will be some software that allows to start automatically when the computer is turned on. So when you turn on the computer in addition to booting windows will take more time to launch the software. So we need to turn off without having the software start up on windows. Follow these steps:

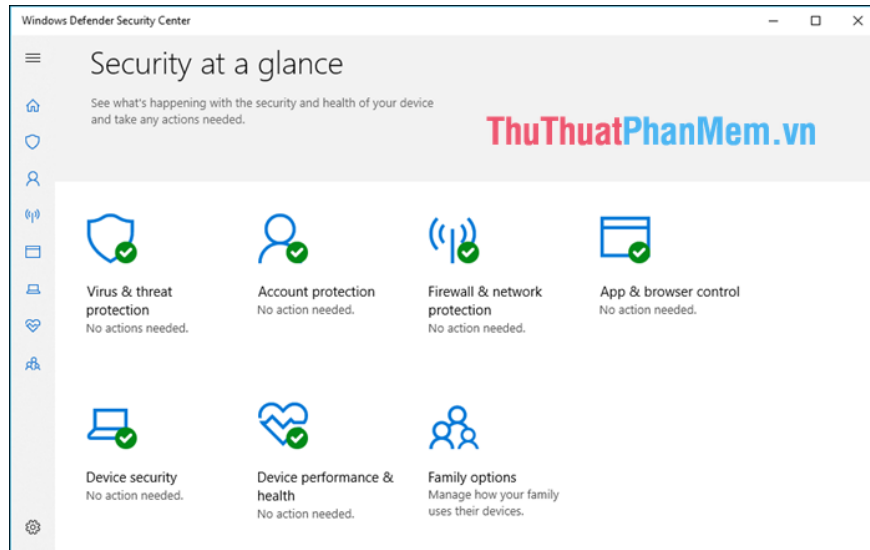
Right-click an empty area of the **Taskbar**, select Task Manager, or press **Ctrl + Shift + Esc** to open the Task Manager dialog box, then select the **Startup** tab .

To disable an application that starts with windows, right-click on the application and select **Disable**.



2. Kill viruses for computers

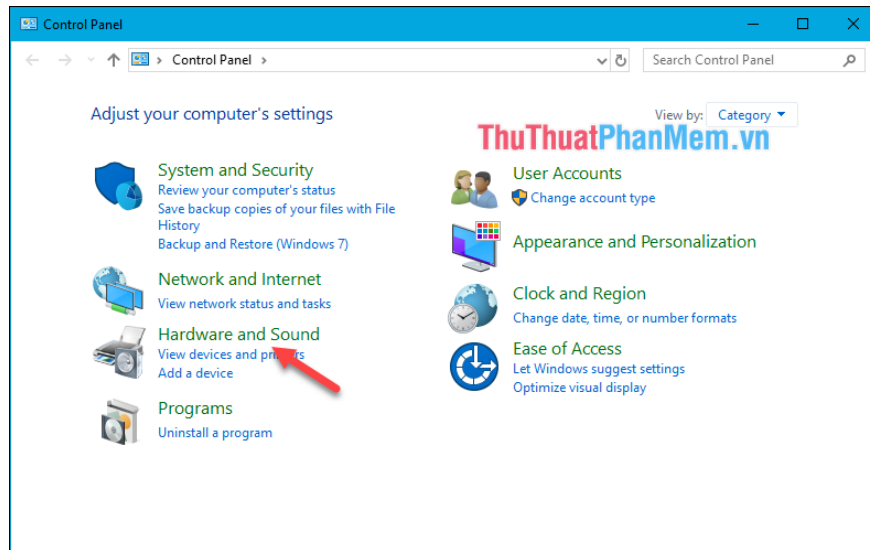
Viruses are also a cause of slow computer startup. When you access the Internet or connect to peripheral devices, the virus infection is unavoidable. Currently, there are many good antivirus software on the market such as: AVG, Kaspersky, Avast, etc. Or if you do not want to install additional anti-virus software, you can use the available Windows Defender antivirus, Windows Defender on windows 10 has been upgraded very strongly and more effectively than previous versions of windows a lot.



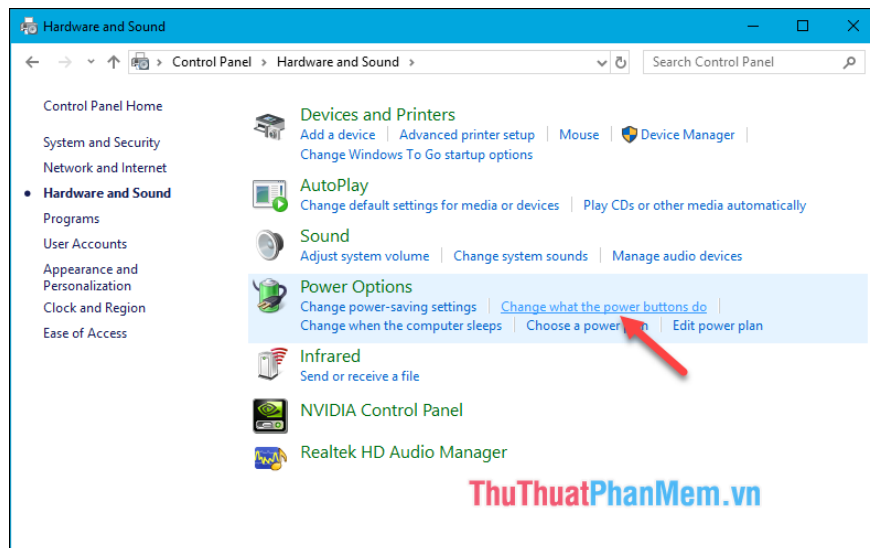
3. Turn on the Fast Startup feature in Windows 10

Fast Startup is a pretty good feature in Windows 10, it will greatly increase the boot time of your computer. Normally after installing Windows 10 this feature will automatically be activated. But in some cases we have to activate it manually. You can check if your computer has enabled Fast Startup mode or not by following these steps:

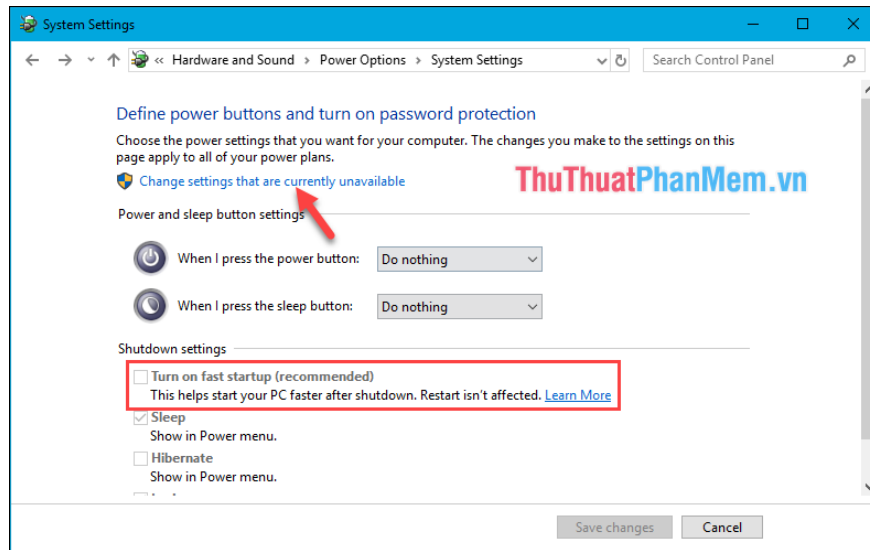
Step 1 : Open Control Panel and select **Hardware and Sound**



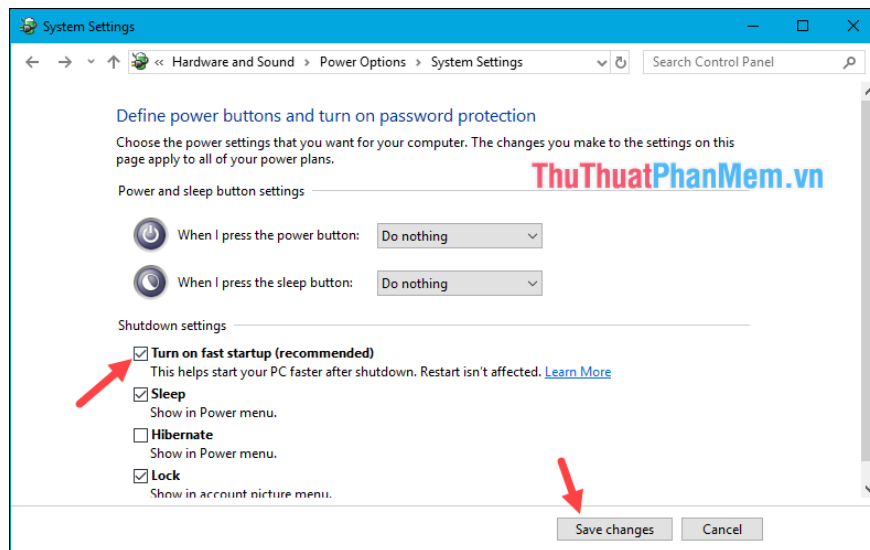
Step 2: In the **Power Options** section, select **Change what the power buttons do**.



Step 3 : A new window will appear, look at Turn on fast startup, if it is already checked, that means Fast startup is enabled. If Fast Startup is not enabled, select the **Change settings that are currently unavailable**



Step 4 : Check the **Turn on fast startup** and then click **Save change** . Thus, the Fast Startup feature is enabled.



4. Upgrade to an SSD

If all of the above fail to improve the boot speed of the computer, the last method we should consider is upgrading the HDD to SSD. Of course, the price of SSDs is still high, but the performance it brings is undisputed. If with the HDD version, it takes a few minutes to boot the computer, with the SSD you only need about 10 seconds to start the computer to the Desktop screen.



Above are some small tips to improve the acceleration of Windows 10 that TipsMake.com wants to share to you. Hopefully, through this article, you will have more solutions to make your computer work better. Good luck!

You finished reading the article "**How to fix slow boot Windows 10**" edited by the [TipsMake](#) team. We hope this article has provided you with many useful tech tips and tricks. You can search for similar articles on tips and guides. Thank you for reading and for following us regularly.