

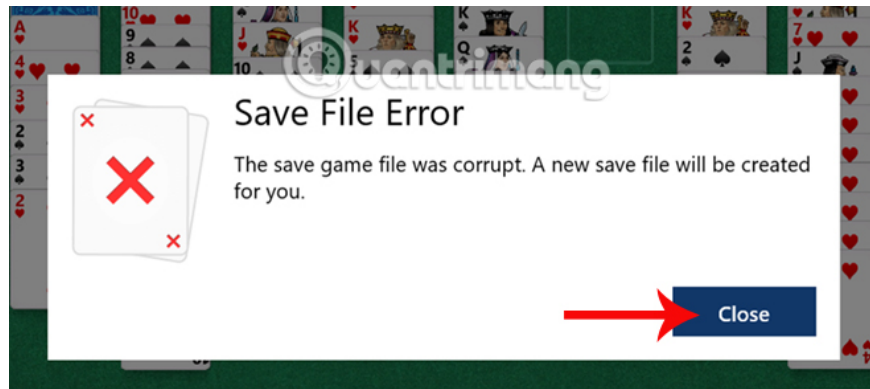
How to fix save file error game Solitaire Windows 10

Error notifying save file error on Solitaire Windows 10 game makes it impossible to open the save screen and cannot access the game to open a new table.

Solitaire is a classic game on Windows versions. On Windows 10 system version, Solitaire has a lot of special improvements on the interface of the game. However, there are many players who reflect that they have Save File Error game Solitaire, the old game save file is broken and you cannot access the game to play the new table anymore. So how to fix this error when playing Solitaire game on Windows 10?

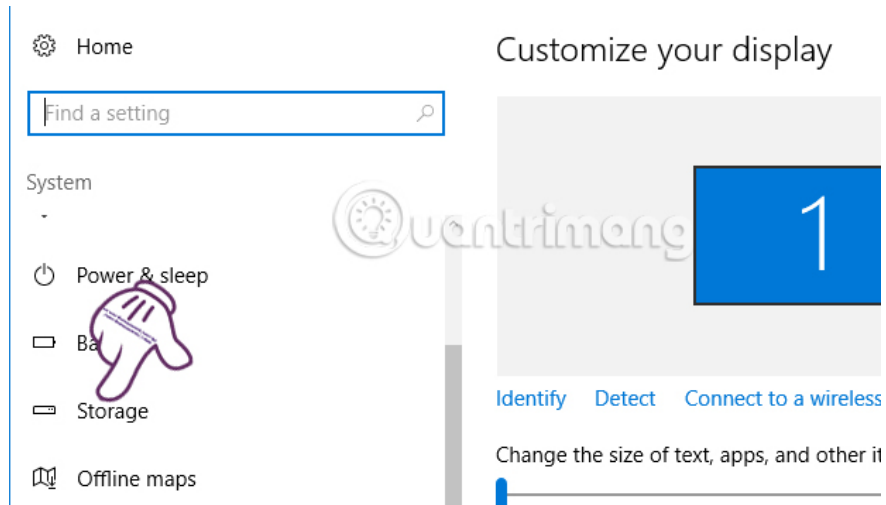
1. How to reduce lag, jerk game play on Windows 10?
2. Summary of common errors on Bluestacks and how to fix each error
3. Let's train with the game Don't Stop! Eighth Note on PC

Error Save File Error game Solitaire on Windows 10 will have notice as shown below. We click **Close** to close the error notification interface on the game.



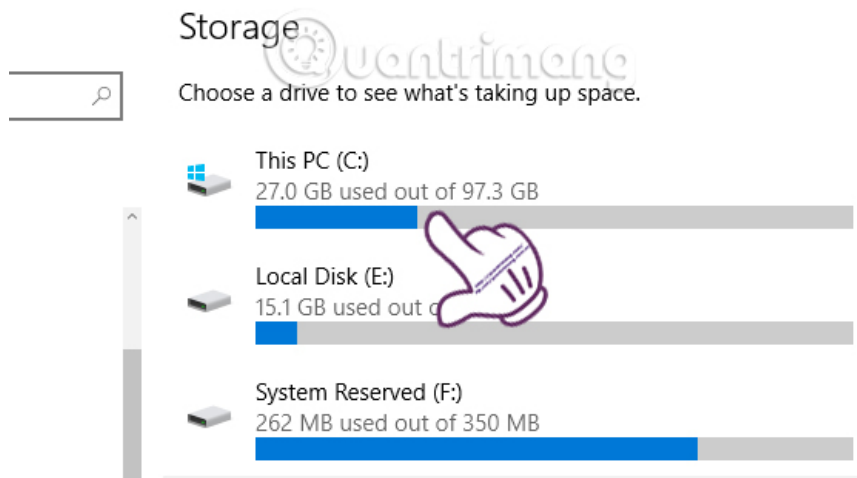
Step 1:

First of all, we will access the link **Settings> System> Storage** .



Step 2:

After clicking on Storage, you look at the content on the right and click on the **drive to install the Solitaire game**, usually in the C drive.



Step 3:

Switch to the **Storage Usage** interface. Users click on **Apps & games** to search Solitaire.

Storage usage

🔄 Last refreshed on 4/26/2017 4:37 PM

27.0 GB used out of 97.3 GB



Take a look in each section and remove what you don't need.

System & reserved

16.9 GB

Apps & games

6.44 GB

Documents

152 MB



Step 4:

We will see a list of games and software installed on the system. To quickly search Solitaire games, **enter solitaire keywords** in the Search this list box. Soon the game name will appear in the results found.

⚙️ Apps & games

Apps & features

[Manage optional features](#)

Search, sort, and filter by drive. If you would like to uninstall or move an app, select it from the list.

solitaire 

Sort by name

This PC (C:)

You have 70.2 GB of space available on the selected drive.



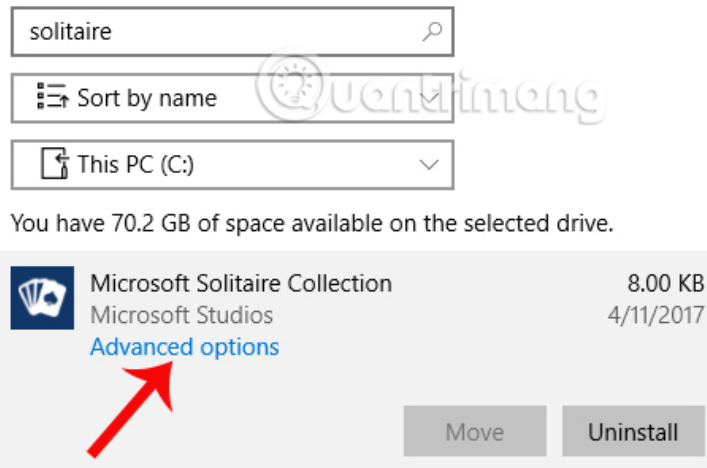
Microsoft Solitaire Collection
Microsoft Studios

8.00 KB
4/11/2017

Step 5:

Click on the **Microsoft Solitaire Collection** game, then select **Advanced options** to use advanced settings options for the game.

move an app, select it from the list.



Step 6:

In the **Storage usage and app reset interface**, we will check the **Reset** button to **reset** the entire Solitaire game. After that, you restart the game to be able to play the game.

Note to readers , this way will fix the error of not playing the game but not get back to the previous Solitaire game screen has failed.



Thus, with the reset of new Solitaire settings on the system, we were able to fix the Save File Error game Solitaire on Windows 10. You can use the Reset method on some applications. or game installed on Windows 10.

Hope the above article is useful to you!

You finished reading the article "**How to fix save file error game Solitaire Windows 10**" edited by the [TipsMake](#) team. We hope this article has provided you with many useful tech tips and tricks. You can search for similar articles on tips and guides. Thank you for reading and for following us regularly.

