

# How to fix problems with multi-monitor setup in Windows

There may be times when you are faced with problems related to the second screen. Here are some tips you can use to fix the problem.

Setting up a dual-screen system is useful for users for a variety of reasons, including the ability to multitask or switch between apps or websites, without minimizing the size of the window. continuity. There may be times when you are faced with problems related to the second screen. Here are some tips you can use to fix the problem.

## No signal

If the second screen receives the message '**No signal**' , then that means the data is not transferred from the computer to the screen. There are several different methods you can try to fix this error.

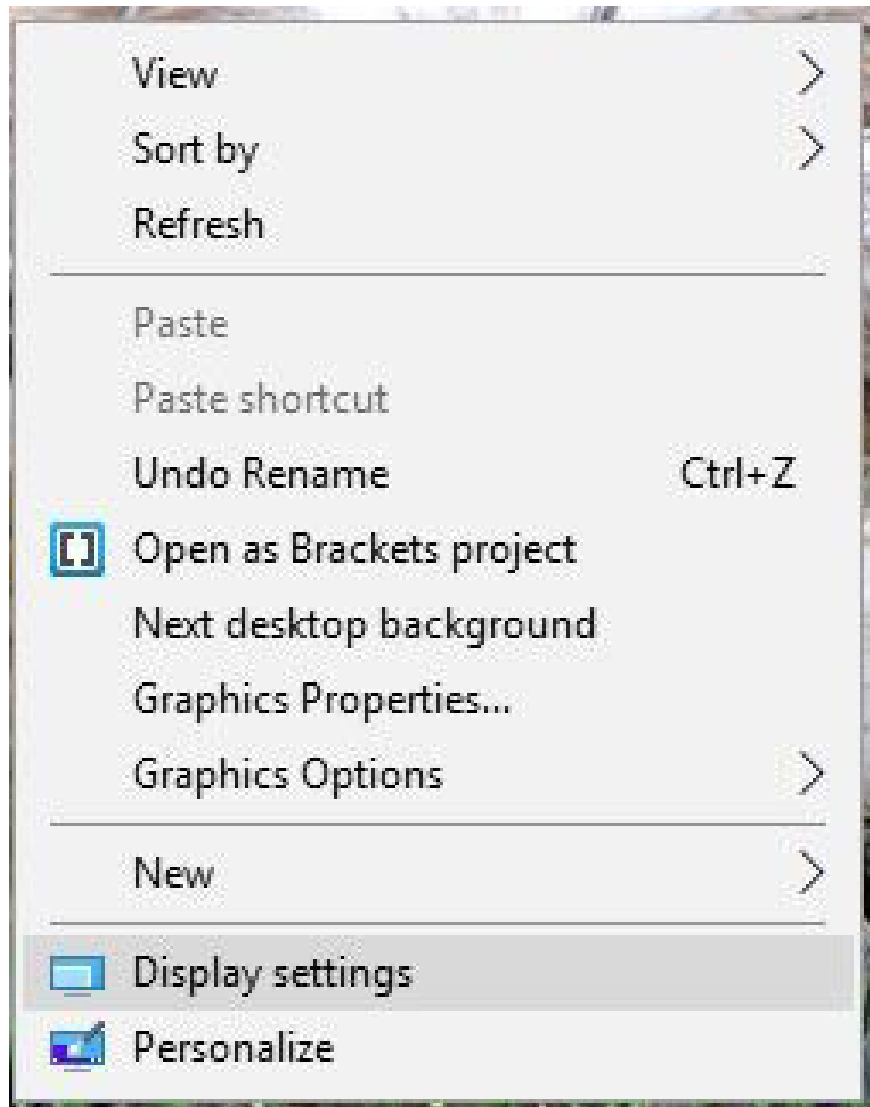
If you connect the monitor while turned on, the system may not recognize it. Turn off the monitor and then turn it back on to see if the system recognizes the new screen.

Another easy thing to check again is the cables. Make sure they are connected correctly and none of them are loose or fall out. If the cables are fine, unplug them and then plug them in again to make sure they are securely attached. You may also need to try a new cable.

Try the Windows detection tool to see why Windows doesn't recognize that a monitor is connected.

To check this, do the following:

1. Right-click on the desktop and select **Display settings**.



2. Scroll down until you find the **Multiple display** section .

## Multiple displays

Older displays might not always connect automatically. Select Detect to try to connect to them.

Detect

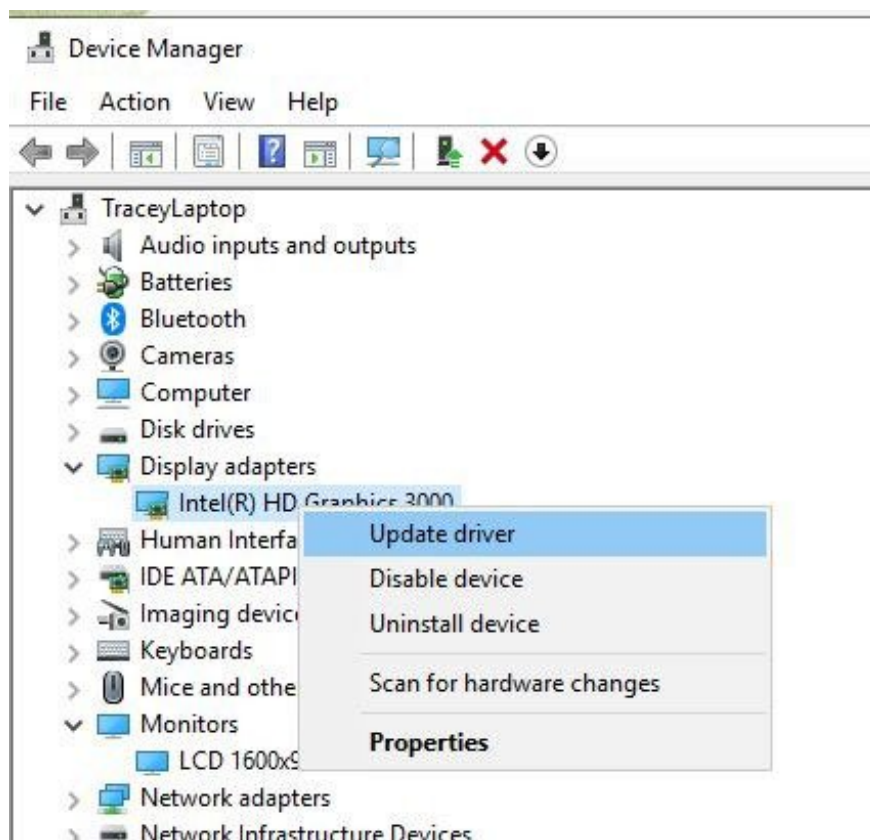
3. Click the **Detect** button .

If the second screen has multiple input options, make sure you have pressed the button to select that type of input.

If you use a dedicated graphics card with multiple outputs, change the graphics port you are using. The port may be damaged and switching ports will fix the problem.

Although Windows 10 supports multiple monitors by default, you can try updating your graphics driver.

1. In the search box on the taskbar, type **Device Manager**, then select it.
2. Click the arrow next to **Display adapters**. Right-click on the graphics card you want to update.



3. Select **Search automatically for updated driver software**.



4. Select **'Update Driver'**.

5. If Windows doesn't find new drivers, you can try searching the manufacturer's website.

## Wrong resolution

If you are adding a new, higher-resolution monitor to your system, the new monitor may try to copy settings from the old monitor or match the settings of the current monitor. Fix the resolution of the new screen by following these steps.

1. Right-click on the screen and select **Display settings** from the menu.
2. Click the screen you want to edit in the top window.
3. Scroll down and find **Scale and layout**.
4. Under the resolution, use the drop-down menu to select the correct resolution for the screen.

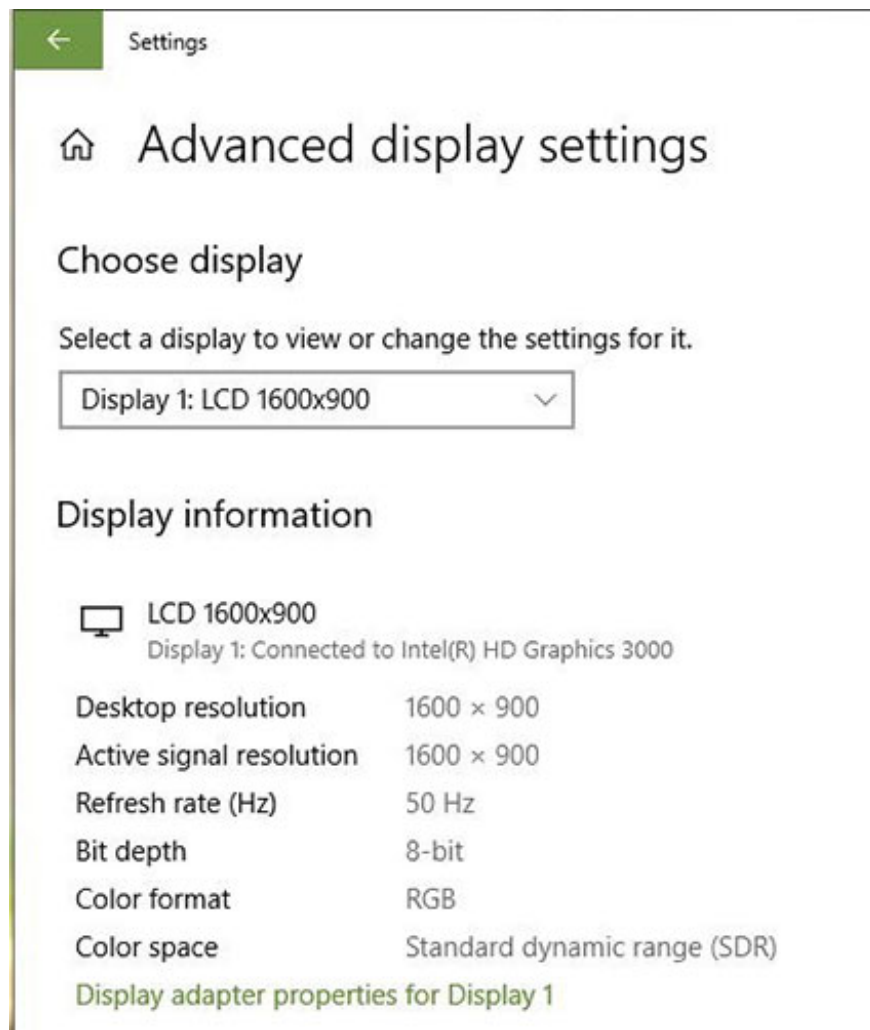
If this doesn't work, try updating the graphics driver as described above.

## The refresh rate is incorrect

Windows usually doesn't choose the best setting for the new monitor, so you may have to manually set a refresh rate to speed up the screen.

To test the refresh rate that the new monitor is using, try using TestUFO. Then compare that rate to the fastest speed for your new screen. If you want to change the speed, follow these steps.

1. Right-click on the desktop and select **Display settings** from the menu.
2. Scroll to the bottom of the window and click **Advanced display setting**.
3. Click **Display adapter properties for X**. Make sure it is the screen you want to change.



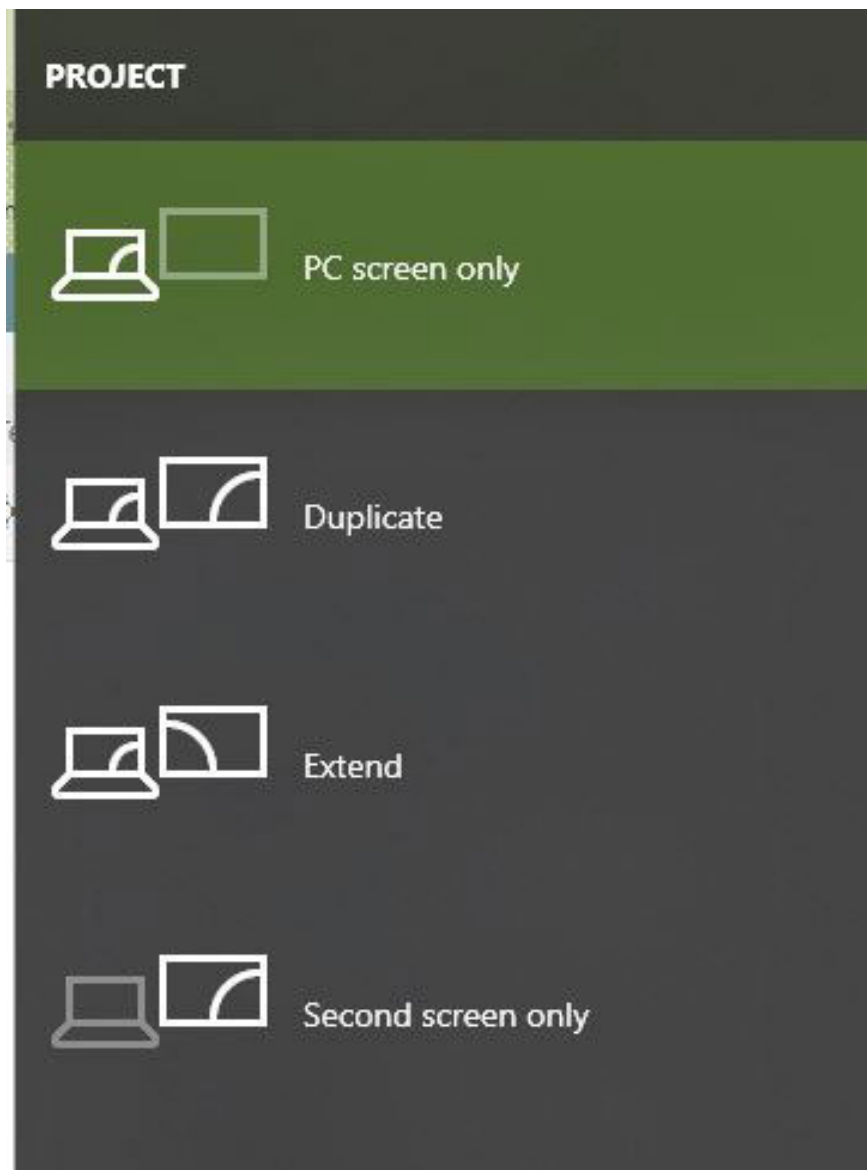
4. Select the **Monitor** tab at the top.

5. In the **Monitor settings** section , use the drop-down box to select the refresh rate you want to use.

## Screen type

When adding a second monitor to your system, you can choose to expand the desktop, duplicate it or keep the desktop on just one screen. To change this setting, do the following:

1. Press Win + P
2. Select the screen you want.



## The screen when playing games is reduced to the maximum size

Another problem you may encounter when using the second monitor is that the game you are playing on one screen is reduced to its maximum size for no apparent reason. You may accidentally click on the second screen because there is nothing separating the screens.

If this happens to you, try one of the following troubleshooting tips:

1. Check out the options displayed in the game itself. If you're playing in '**Windowed**' mode , try switching to '**Full Screen**' mode instead.
2. Try switching to '**Borderless Window**' mode. This mode will not prevent you from moving the mouse to the other screen, but it will prevent the screen from being reduced to the maximum size when you are playing the game.
3. Try the Dual Monitor Tool (reference link: <http://dualmonitortool.sourceforge.net/>). The **Cursor** tool allows you to lock the mouse pointer on one of the screens. Remember to unlock when you finish the game!

4. Turn off the second screen or press Win + P to change the screen only to the desktop.

Use these tips to make using a second monitor an experience that makes you more satisfied and reduces problems that prevent you from completing a task.

Hope you are successful.

You finished reading the article "**How to fix problems with multi-monitor setup in Windows**" edited by the [TipsMake](#) team. We hope this article has provided you with many useful tech tips and tricks. You can search for similar articles on tips and guides. Thank you for reading and for following us regularly.