

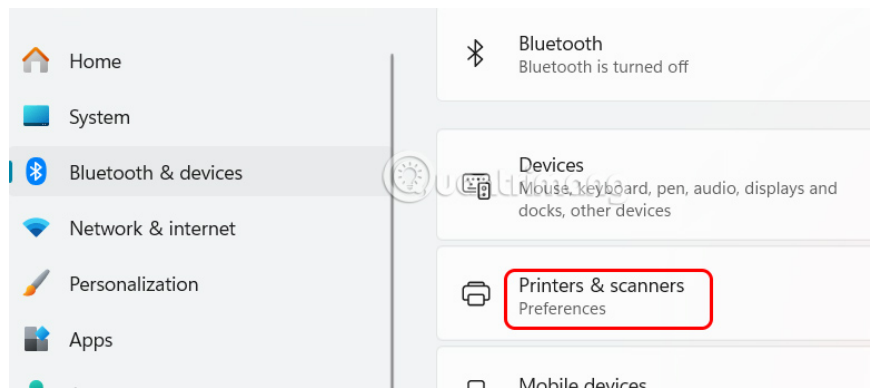
How to fix printer name already exists error on Windows 11

When installing a printer on Windows 11, if the system detects that the printer name already exists, we will receive an error message. Below are instructions to fix the error that the printer name already exists on Windows 11.

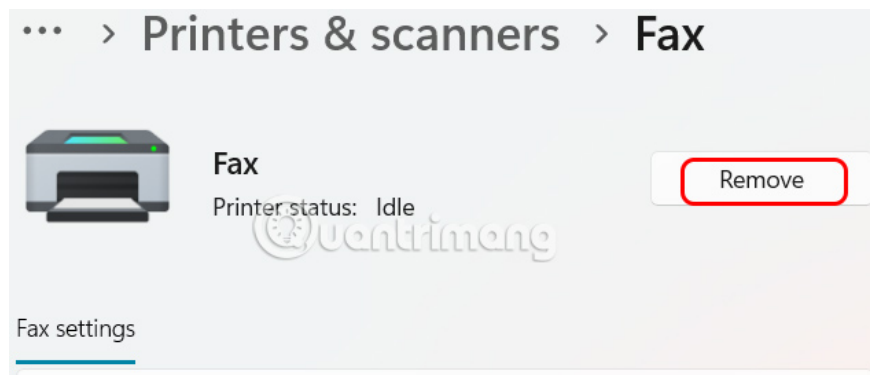
When installing a printer on Windows 11, if the system detects that the printer name already exists, we will receive an error message Unable to install printer and you need to give the printer a different name. This problem usually arises when the previous printer is not completely removed or the printer's registry entry is still present, preventing new installations with the same name. Here are instructions to fix the error that the printer name already exists on Windows 11.

Delete the current printer and driver

Press **Windows + I** to open **Settings** , then select **Bluetooth & Devices** and look to the right and select **Printers & Scanners** .



Then you will see the list of printers connected to the computer. You **find the printer with the name that exists to delete** , then **click Remove** to delete. Then you restart the computer and proceed to reinstall the printer.



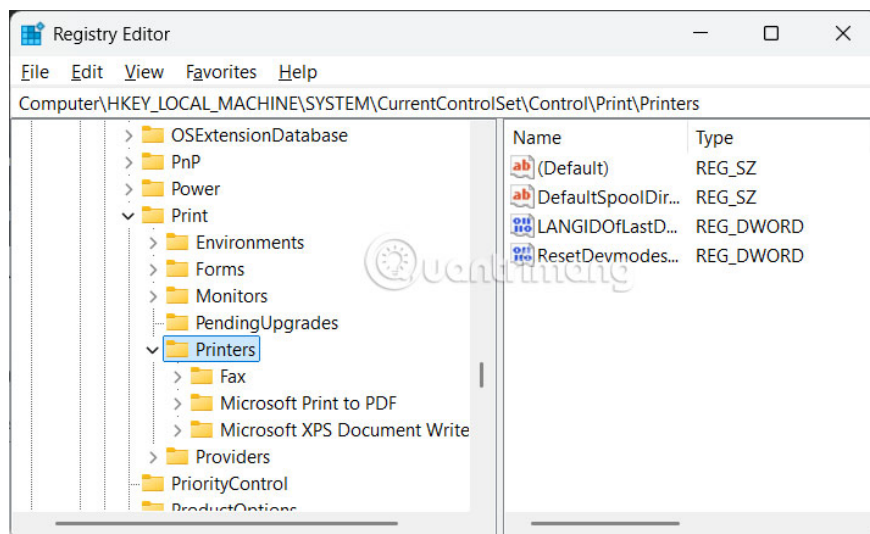
Remove previous printer from Registry

When you uninstall a printer from your computer, there will be registry entries left behind and this may cause the printer name that previously existed to not be installed.

Press the **Windows + R** key combination and type **regedit** to access Registry Editor. Next, navigate to the following path

```
HKEY_LOCAL_MACHINE\SYSTEM\CurrentControlSet\Control\Print\Printers
```

Here you **check the folder key in the Printers section**. Each subkey represents a printer installed on the computer. You find the subkey that matches the name of the printer that is reported with a duplicate name error, then right-click and select Delete to delete.

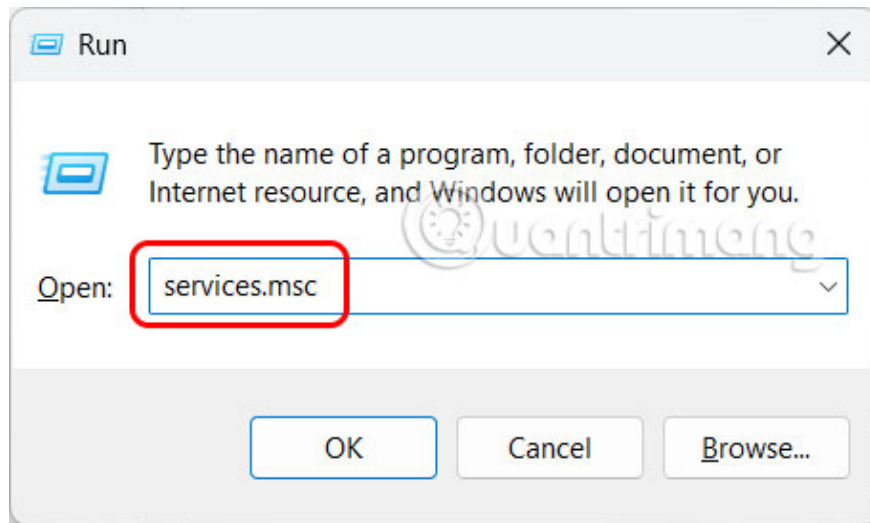


Restart Print Spooler

Print Spooler manages all printing tasks and detects printers on Windows. When we restart the service, it will restore the service and fix printer installation errors on Windows 11.

Step 1:

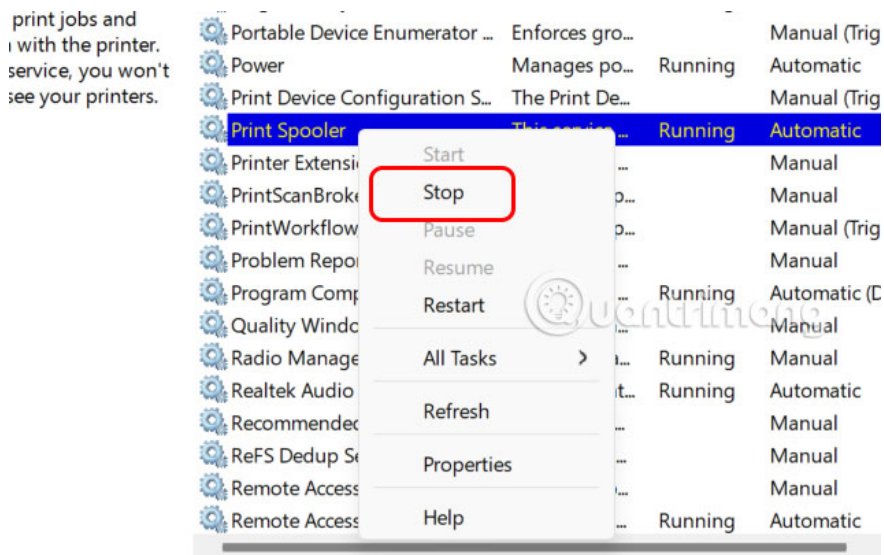
Press the **Windows + R** key combination to open the Run dialog box and then enter **services.msc** in the interface.



Step 2:

Display the interface of services on the computer, you **find the Print Spooler service** in the list. Right-click on the service and **select Stop** in the displayed list.

Then the Print Spooler service will stop working. Wait a moment, then right-click and select Start to restart the service.

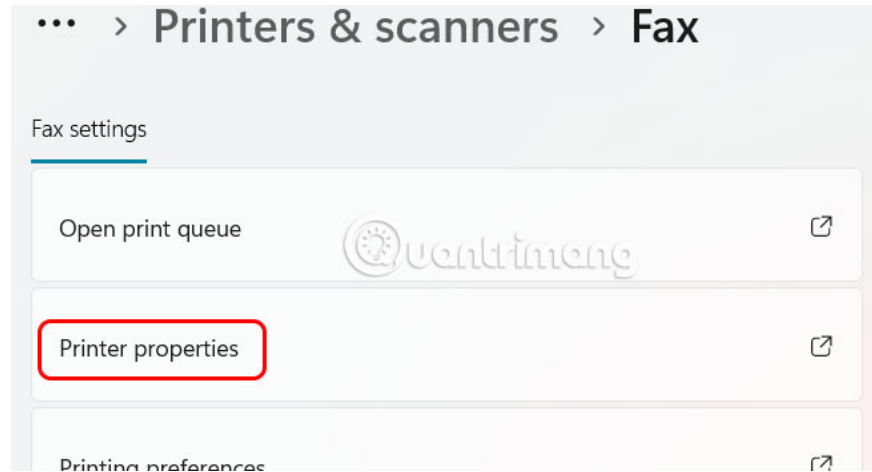


Change printer name installed on Windows 11

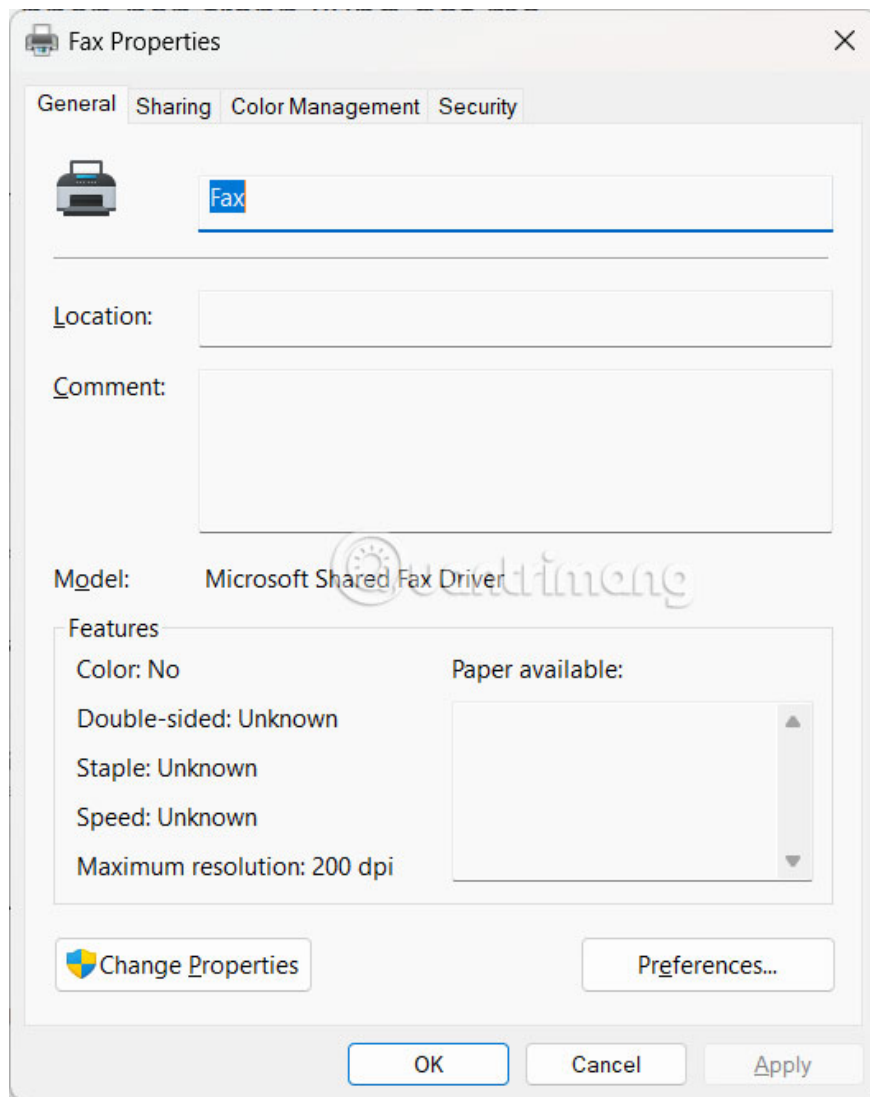
When installing or sharing a printer, Windows requires only one printer name. If you encounter an error that the printer name has appeared despite deleting previous entries, try setting a different name during the installation

process.

In the settings interface on your computer, select **Bluetooth & Devices > Printers & Scanners** . Click on the printer and select **Printer Properties** to adjust.



Now you **give the printer a new name in the General tab** and click Apply below to save.



You finished reading the article "**How to fix printer name already exists error on Windows 11**" edited by the [TipsMake](#) team. We hope this article has provided you with many useful tech tips and tricks. You can search for similar articles on tips and guides. Thank you for reading and for following us regularly.