

How to Fix 'Printer in Error State' on Windows

The Printer in error state message on Windows can appear for many reasons, such as a failed connection, driver issue, or misconfiguration of system services.

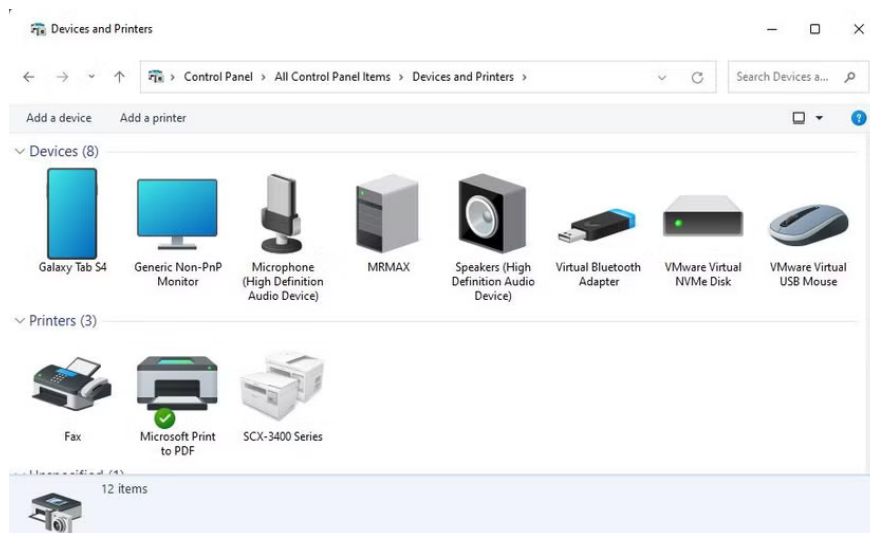
The "Printer in error state" message on Windows can appear for a variety of reasons, such as a failed connection, driver issues, or misconfigured system services. Fortunately, you can resolve this issue and get your printer working again by following the tips listed below.

1. Make sure the printer is properly connected to the PC

The first thing to check is the printer connection to your PC. For wired printers, make sure the cable is securely plugged into both your computer and the printer. For wireless printers, make sure the printer is connected to a working WiFi network.

Additionally, to confirm that your Windows PC recognizes the connected printer, do the following:

1. Open the search menu, type **Control Panel** and select the first result that appears.
2. **In the Control Panel window**, click **View devices and printers** in the **Hardware and Sound** section.
3. Find and select a printer.
4. At the bottom bar, the printer's **Status** field will display **Ready**. This means that the PC recognizes and can communicate with the printer.



2. Printer Troubleshooting

Restarting your printer can fix a variety of problems, so it's worth a try. On most printers, you can simply press the Power button to turn it off. Then, wait about 30 seconds, and press the button again to turn it back on.

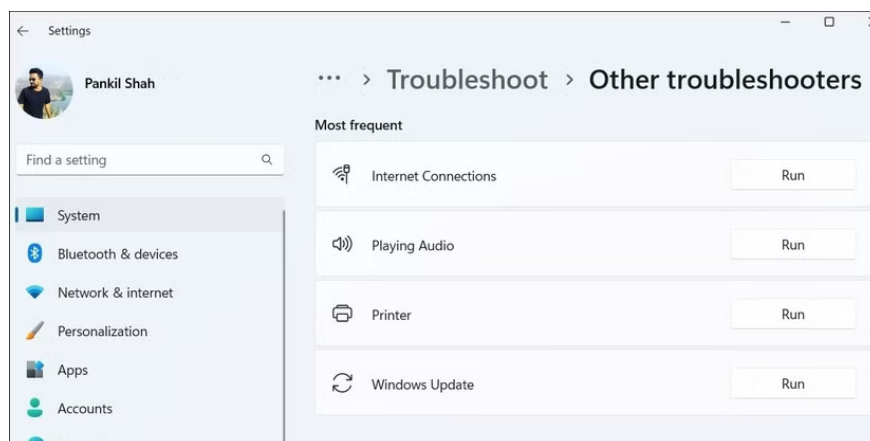
While doing this, make sure that the printer has enough ink and paper in the tray. While this should not cause any errors in Windows, it is still worth confirming.



3. Run Printer Troubleshooter

Running the Printer Troubleshooter on your Windows 10 or 11 PC is an effective way to troubleshoot printer-related issues. The tool can automatically scan your system for any common issues and attempt to fix them. Here's how to run the tool.

1. Press **Win + I** to .
2. Go to **System > Troubleshoot > Other troubleshooters** .
3. Click the **Run** button next to **Printer** .



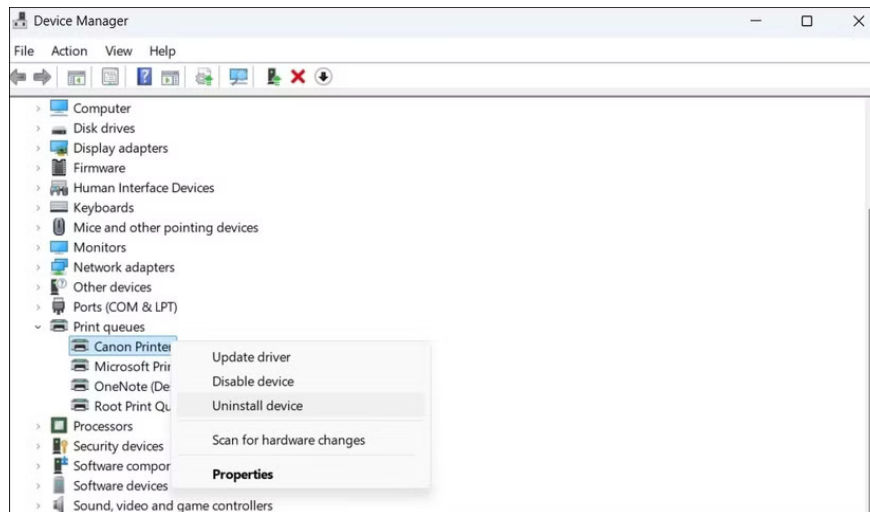
Wait for the troubleshooter to run and resolve any issues. Then, check to see if your printer is working as expected.

4. Reinstall printer driver

Printer drivers allow Windows to communicate with your device. However, if these drivers are outdated or corrupted, you may see a "Printer in error state" message in Windows.

You can try reinstalling the printer driver on your PC to see if that helps. Here are the steps to follow.

1. Disconnect the printer from the PC.
2. Right-click the **Start** icon and select **Device Manager** from the list.
3. Locate and expand **Print queues** .
4. Right click on the printer driver and select **Uninstall device** .
5. Select **Uninstall** to confirm.

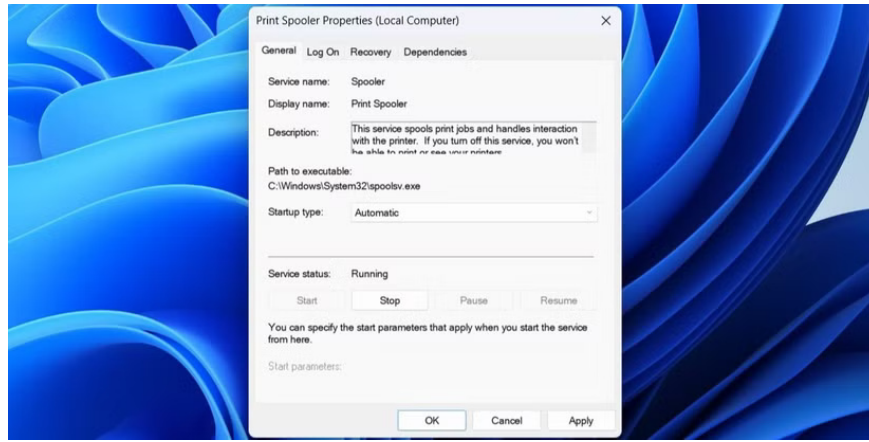


Once you've completed the steps above, reconnect your printer to your PC and Windows should automatically install the necessary drivers. If the drivers aren't installed automatically, visit your printer manufacturer's website to download and install the drivers manually.

5. Configure Print Spooler service

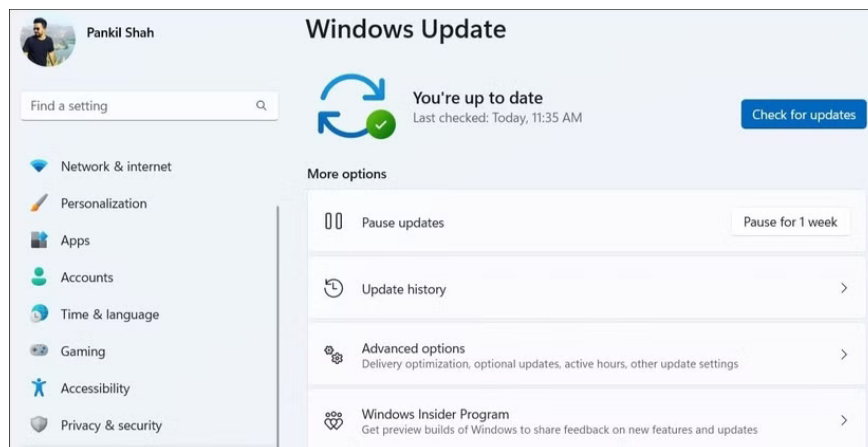
Windows relies on the Print Spooler service to handle print jobs and interact with printers. If this service is not configured to run automatically, you may experience problems. Here's what you can do to fix the problem.

1. Press **Windows + R** to .
2. Type **services.msc** into the box and press **Enter** .
3. Find the Print Spooler service in the list, right-click on it and select **Properties**.
4. Click the drop-down menu next to **Startup type** and select **Automatic**.
5. Click **Apply > OK** at the bottom.
6. .



6. Install Windows updates

You should always keep your Windows PC up to date. Running an outdated version of the operating system can lead to a variety of issues, including the "Printer in error state" message. Download and install any pending updates, and your issue should be resolved.



Your printer can't print anything while it's in an error state. Luckily, it's not too difficult to troubleshoot the underlying issue and get your printer back to normal.

You finished reading the article "**How to Fix 'Printer in Error State' on Windows**" edited by the [TipsMake](#) team. We hope this article has provided you with many useful tech tips and tricks. You can search for similar articles on tips and guides. Thank you for reading and for following us regularly.