

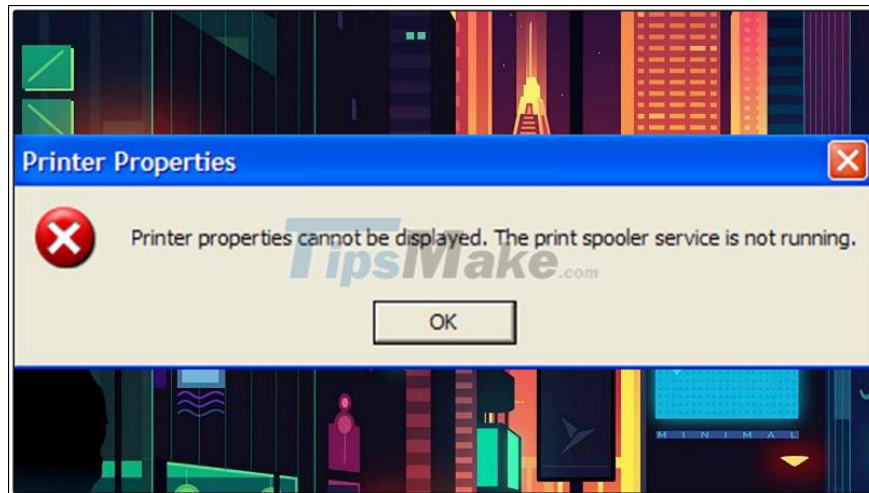
# How to fix Print Spooler Error on the printer

Guide you how to fix printer's Print Spooler error simply and quickly. Click to see now to find out the cause and how to fix it.

Printer is an indispensable device for students, students and office workers to use in printing documents. But sometimes you encounter problems caused by some printer errors, of which the Print Spooler error will cause the printer's operation to stop, which takes time and affects the work of people. use. To fix this error, please refer to the article below.

## 1. Cause of Print Spooler error

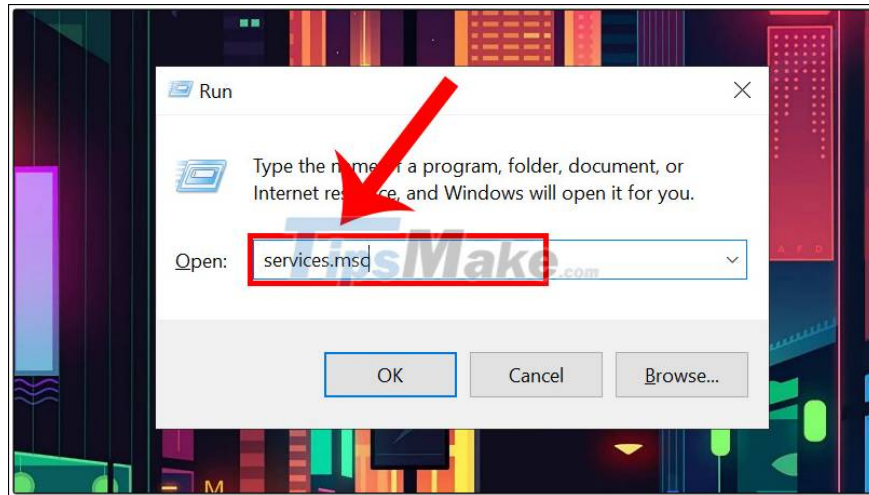
- The main cause is due to driver file error or wrong printer configuration.
- Due to destructive virus causing error spoolsv.exe file.



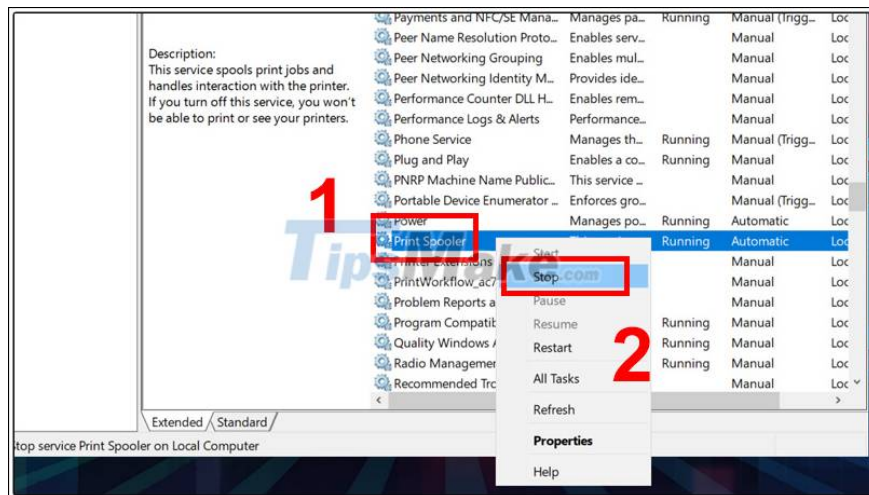
## 2. How to fix the printer's Print Spooler error

- Delete corrupted Print Spooler files

Step 1: Press Windows + R combination and type services.msc, press Enter.

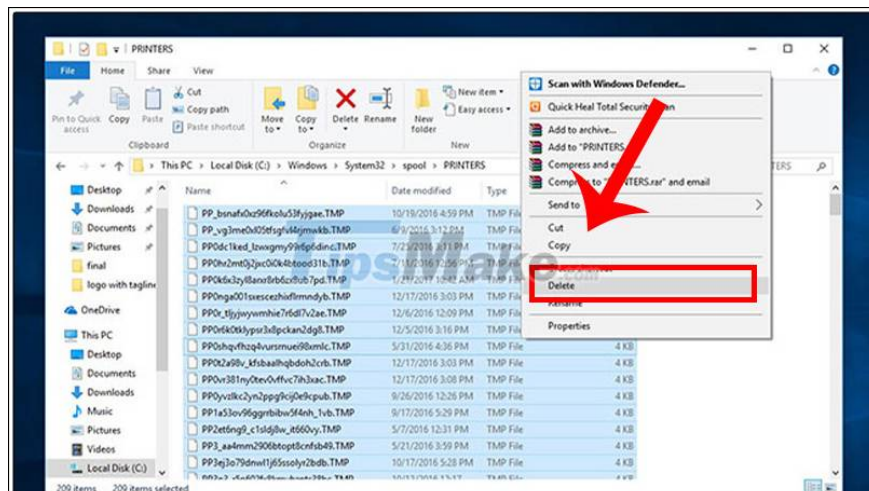


Step 2: In the listed services, stop the Print Spooler service by right-clicking> Select Stop.



Step 3: Make access to the Printers folder as follows:

Select Local Disk C> Press Windows> Press System32> Press Spool> Click Printers. Then select all the files and delete them, leave them blank and close Windows Printers.

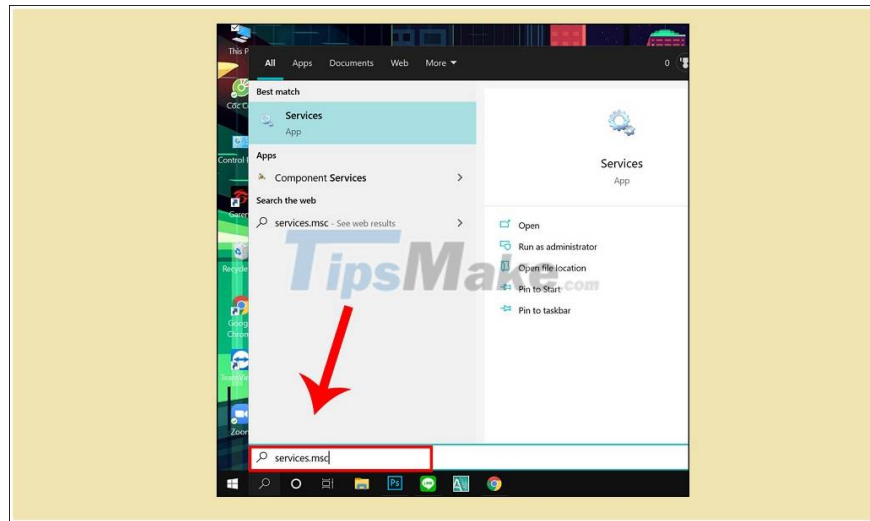


Note: Do not delete the PRINTERS folder. Just delete its content.

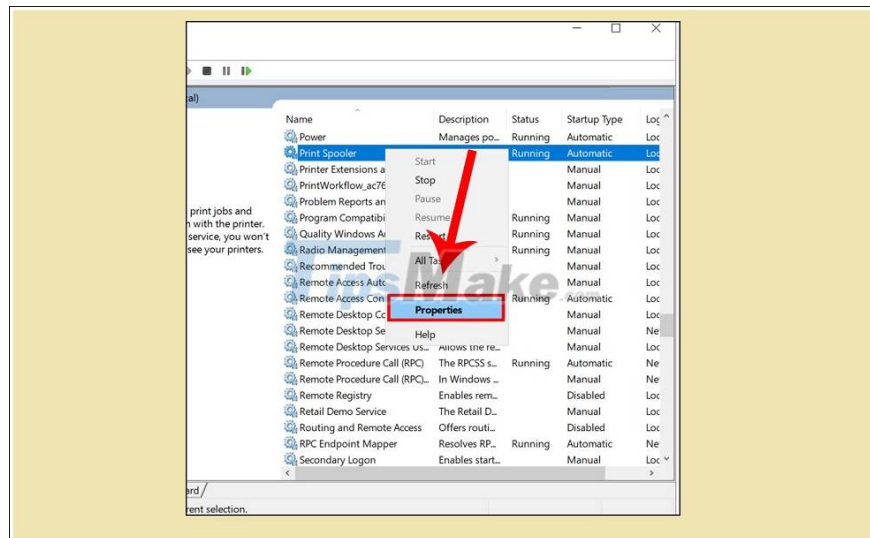
## - Change the Print Spooler service to Automatic

Note: The instructions for Windows 10 other versions do the same

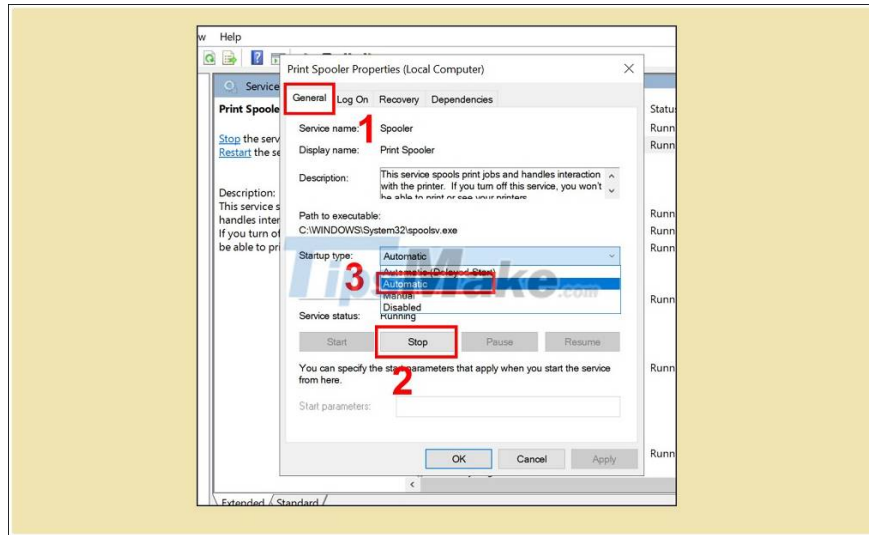
Step 1: Type services.msc into Search.



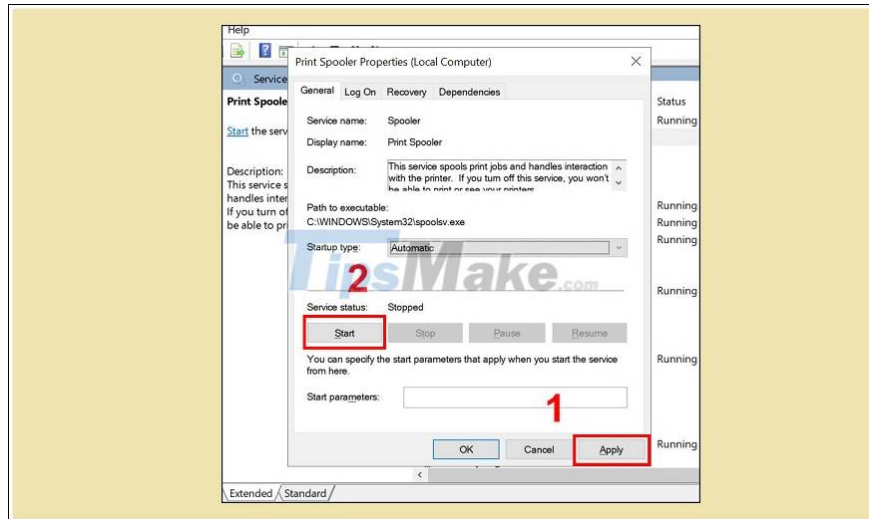
Step 2: In the interface of the services, right-click Print Spooler and select Properties.



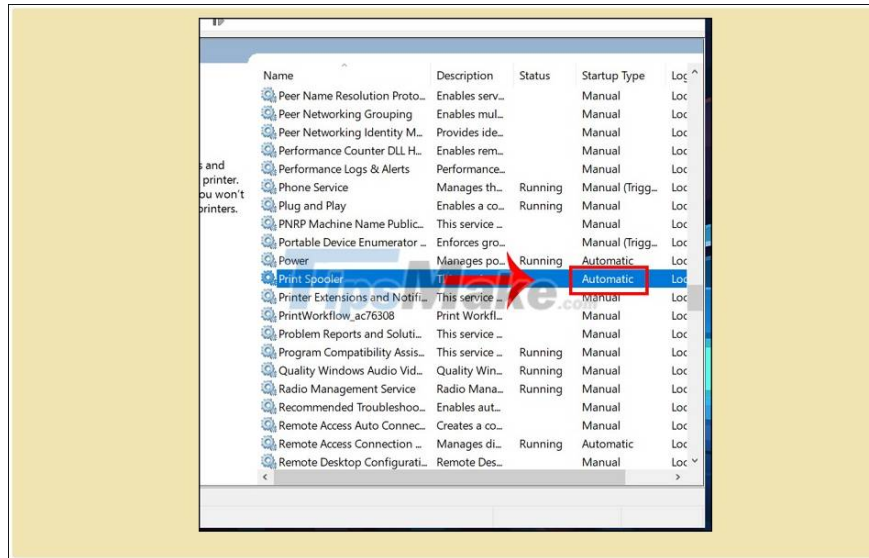
Step 3: In the General tab> Click Stop> At Startup type, select Automatic mode.



Step 4: Then click Apply to save > Click Start to run. Then wait a few seconds for the Print Spooler to restart and it's done.



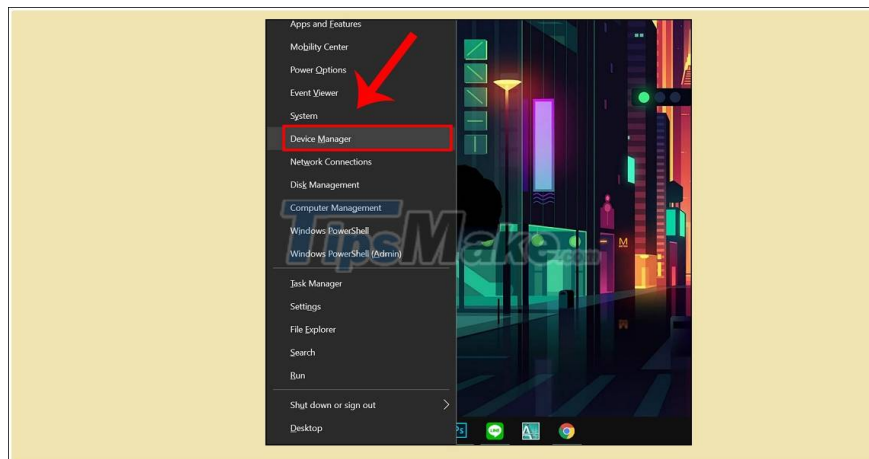
Step 5: Then you go back to the Services interface and see the Print Spooler running in Automatic mode.



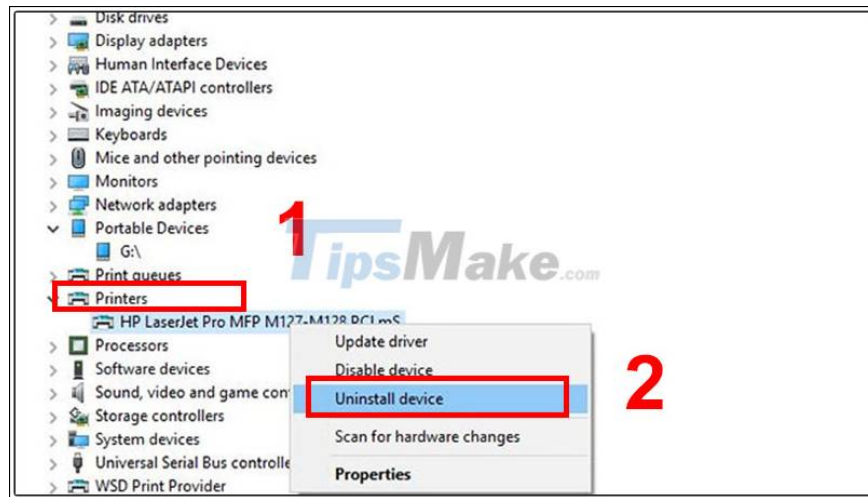
You then restart your computer for the setting to take effect.

## - Reinstall printer driver

Step 1: Press the Windows + X key combination and click Device Manager.



Step 2: Expand Printer drivers, right-click the printer > Select Uninstall device.

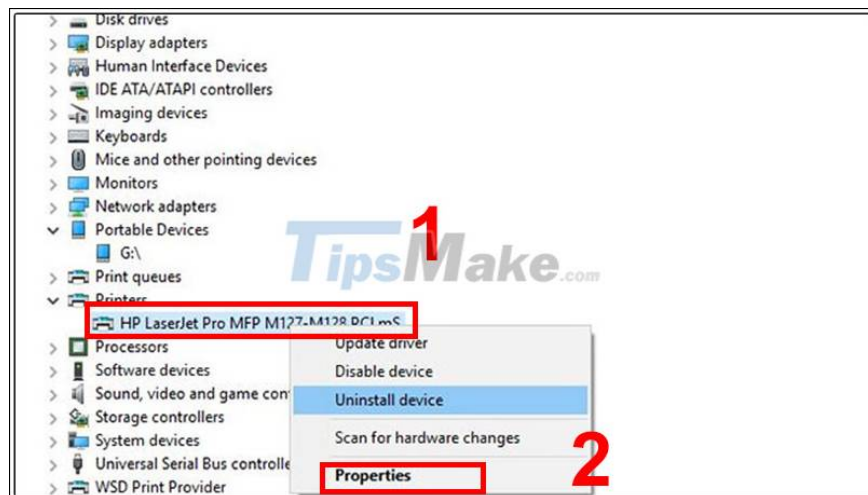


Step 3: Now, install the latest printer driver for Windows 10 from manufacturer's website.

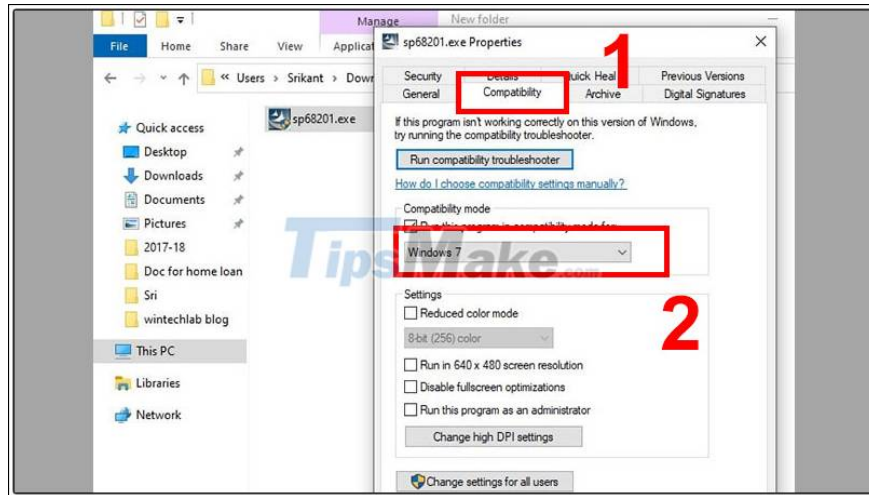
- Install the printer driver to Compatibility mode

If the printer driver is not compatible with Windows 10 then you should try to install the driver in Compatibility mode.

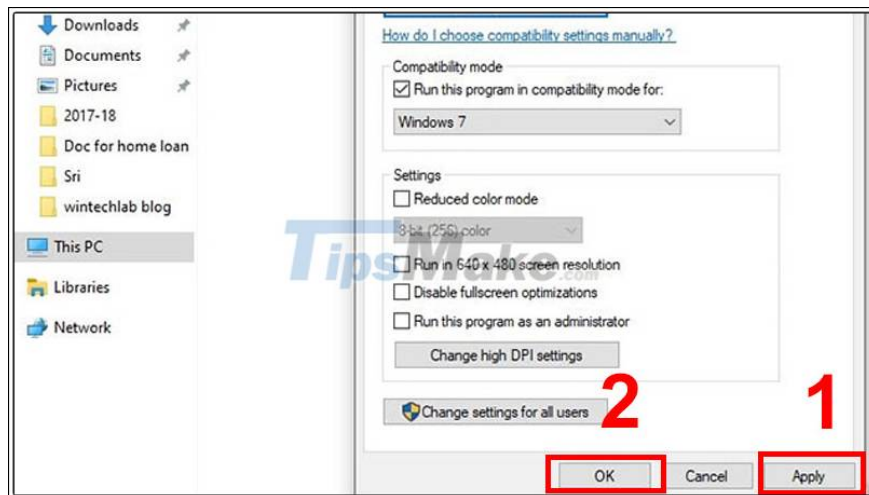
Step 1: Right-click on the printer driver that you downloaded from the manufacturer's website> Select Properties.



Step 2: In the Properties window, go to the Compatibility tab. Here, select Run this program in compatibility mode for> Select Windows 7 in the drop-down menu.

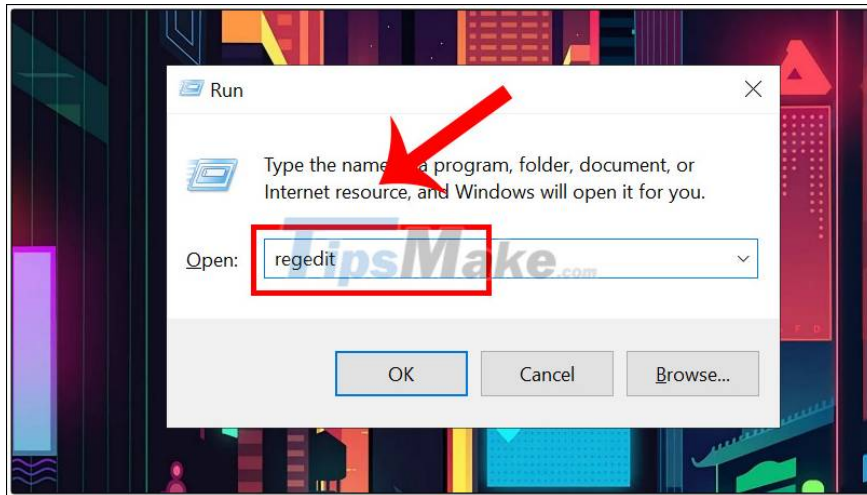


Step 3: Click Apply> Select OK then restart the machine and see if the problem has been resolved.

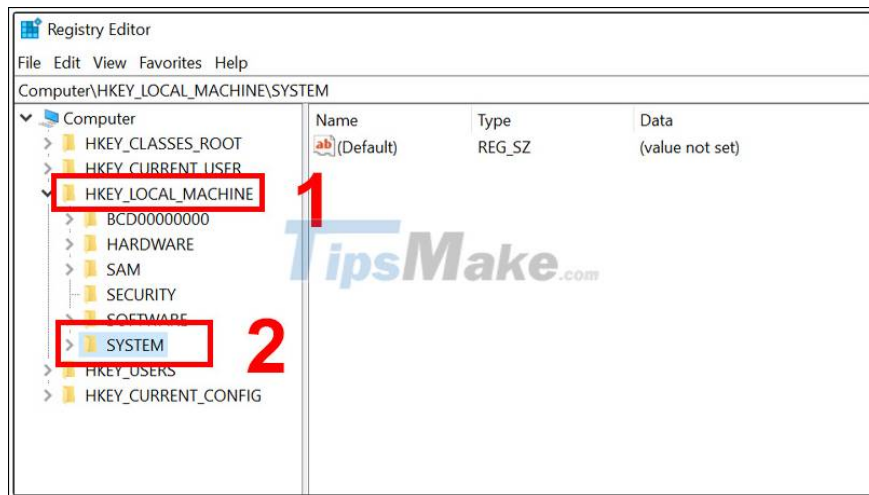


## - Edit Registry

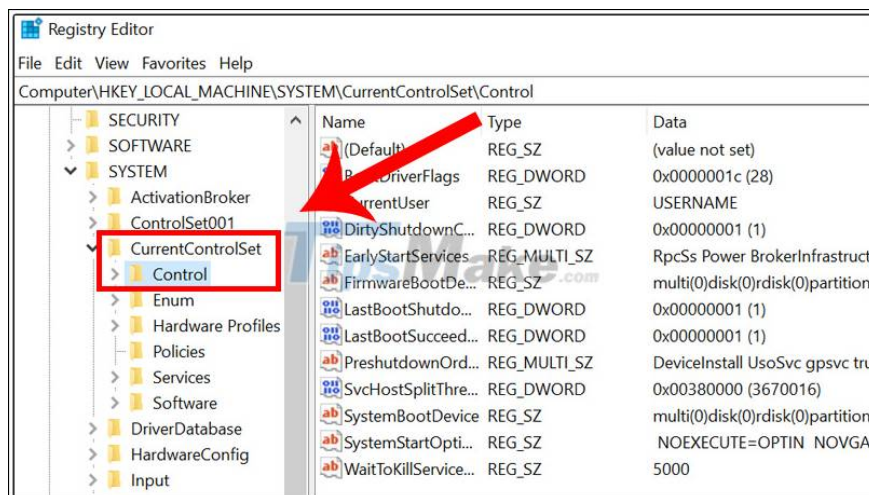
Step 1: Press the Windows + R key combination to open the Run dialog box, then enter the word regedit and click OK.



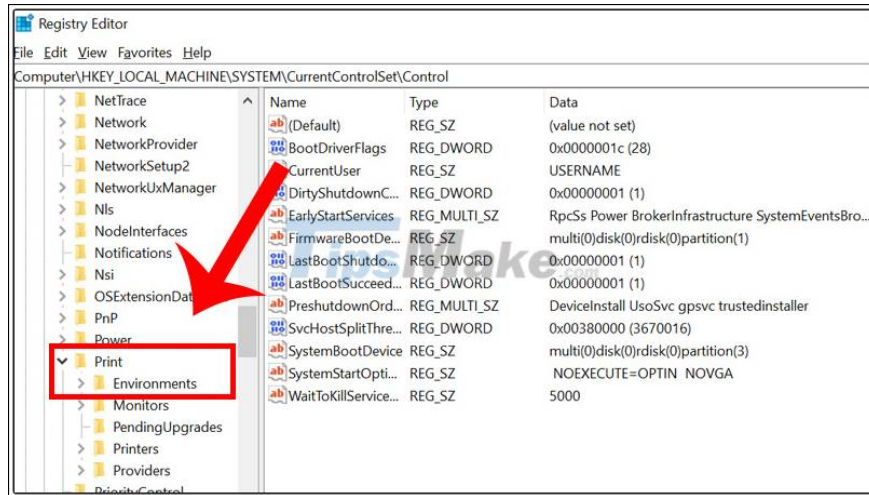
Step 2: From Registry Editor, select HKEY\_LOCAL\_MACHINE> Open the SYSTEM folder.



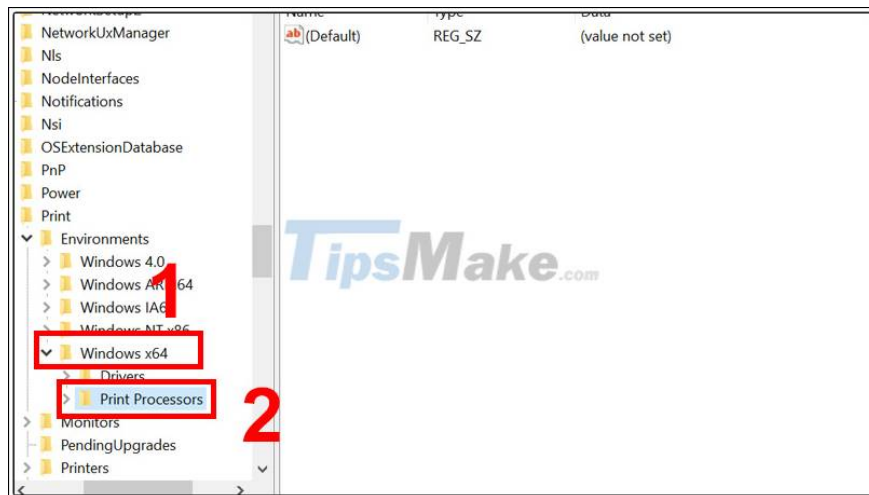
Step 3: Go to the CurrentControlSet folder and select Control.



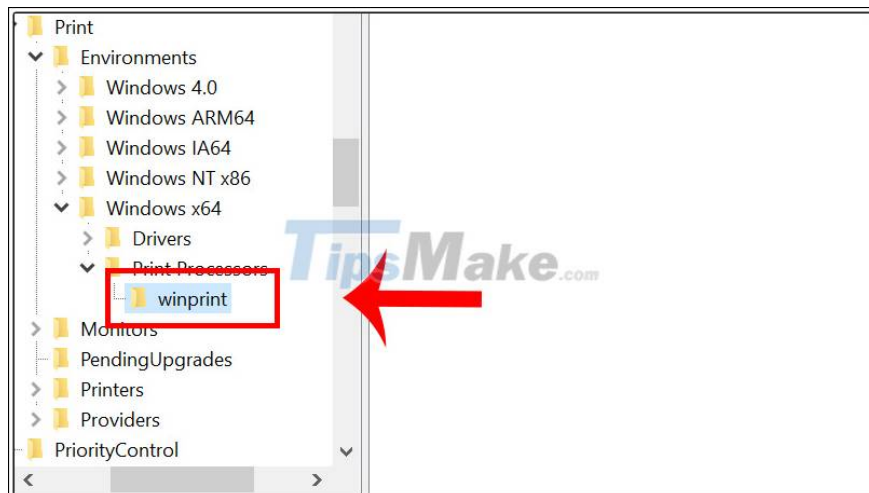
Step 4: Continue to the Print folder, choose Environments.



Step 5: Finally go to Windows x64> Select Print Processors.



Step 6: Delete all keys except winprint.



Now, close Registry Editor and restart Windows.

The last article has guided you how to fix the Print Spooler error of the printer simply and quickly. I wish you all success!

You finished reading the article "**How to fix Print Spooler Error on the printer**" edited by the [TipsMake](#) team. We hope this article has provided you with many useful tech tips and tricks. You can search for similar articles on tips and guides. Thank you for reading and for following us regularly.

---