

How to fix Pin to Start error on Windows 10

To pin any file to the Start Menu bar, you'll use the Pin to Start option. Thus, we can access files and programs on the computer faster. But, what if I lost Pin to Start?

Any version of Windows supports pinning file types and programs into the Start Menu bar via the Pin to Start option. And on Windows 10, we can also do this so we can access files and programs faster on the Start menu.

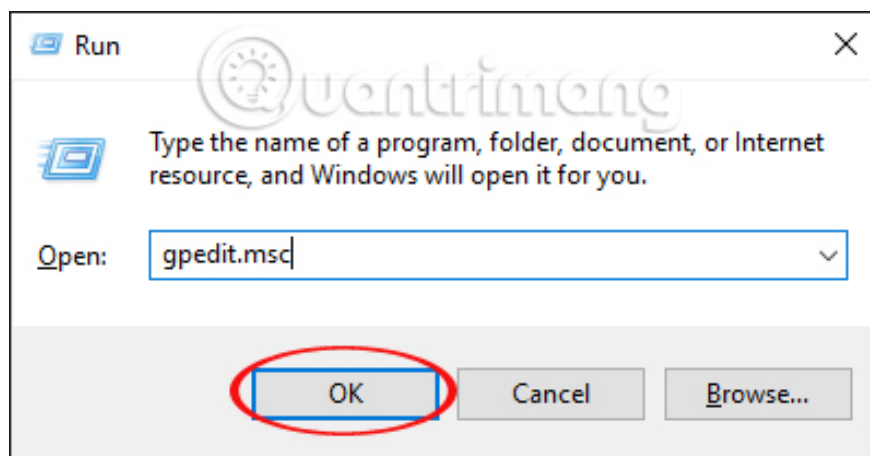
However, some Windows 10 computers suddenly lost the Pin to Start option, unable to pin the program to Start Menu, affecting the computer usage process more or less. If you haven't found a solution, try following the Network Administrator's guide to fixing Pin to Start error 10 below.

Method 1: Use Group Policy Editor

This fix method only applies to Windows 10 Pro or Enterprise edition. If the Home edition computer, will apply the second way that we will introduce below.

Step 1:

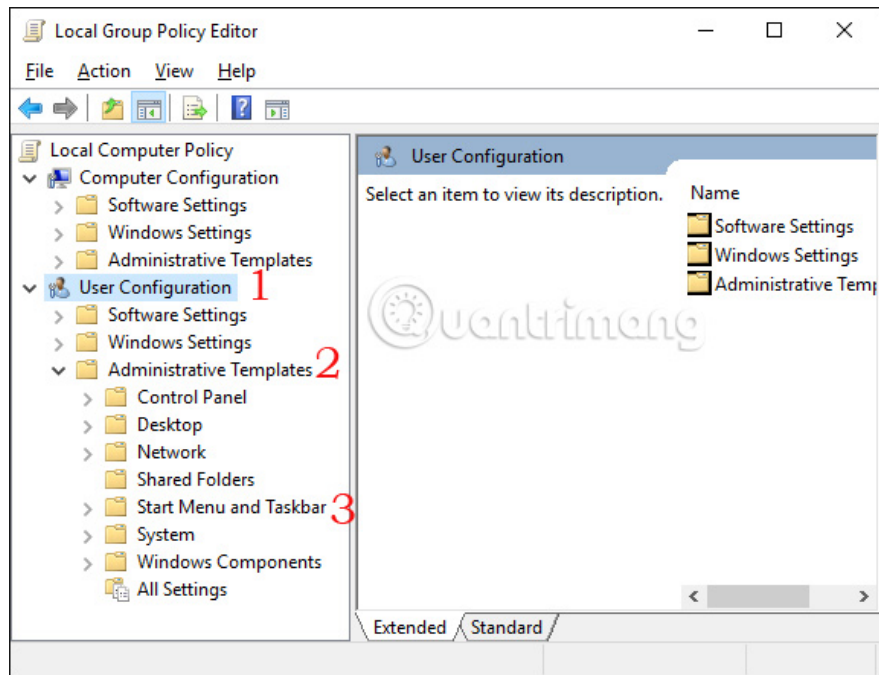
Press **Windows + R** key combination to open the **Run** window and enter the keyword **gpedit.msc** . Click **Enter** to open the Local Group Policy Editor window.



Step 2:

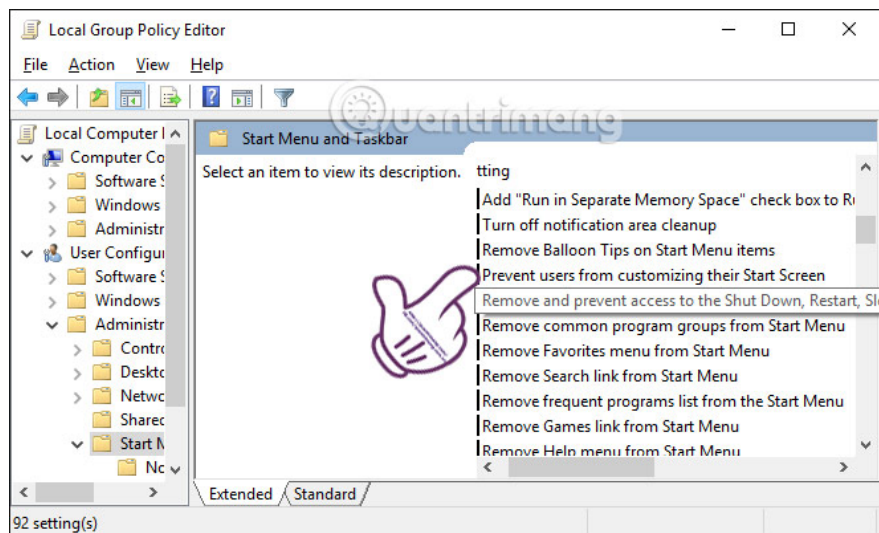
In the **Local Group Policy Editor** window, follow the path:

User Configuration > Administrative Templates > Start Menu and Taskbar



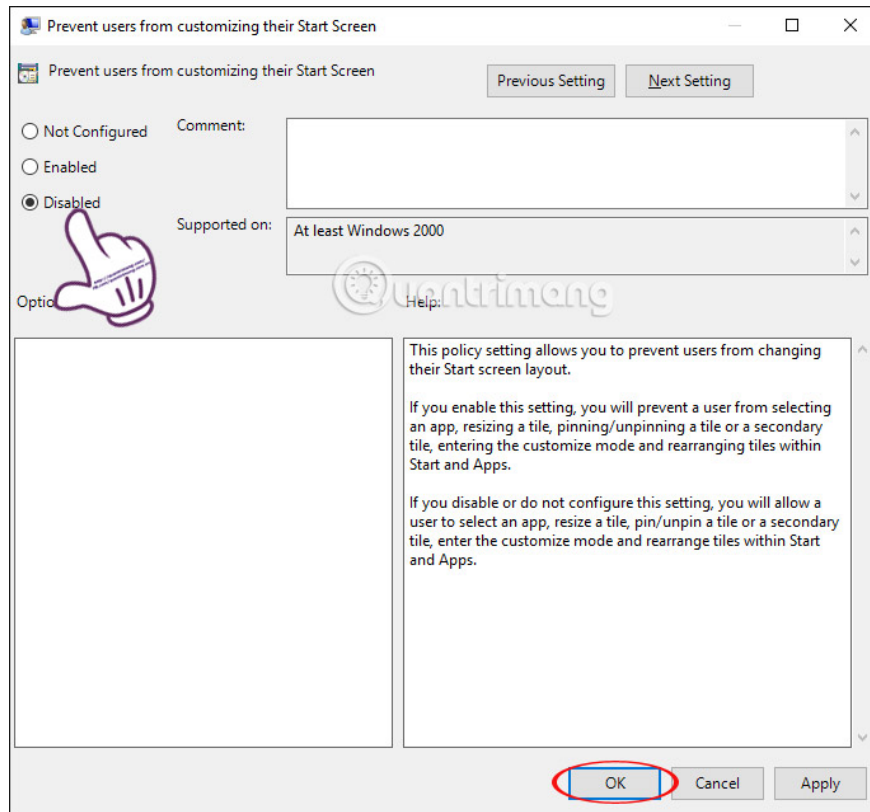
Step 3:

In the right view, find and double-click **Prevent users from customizing their Start Screen**.



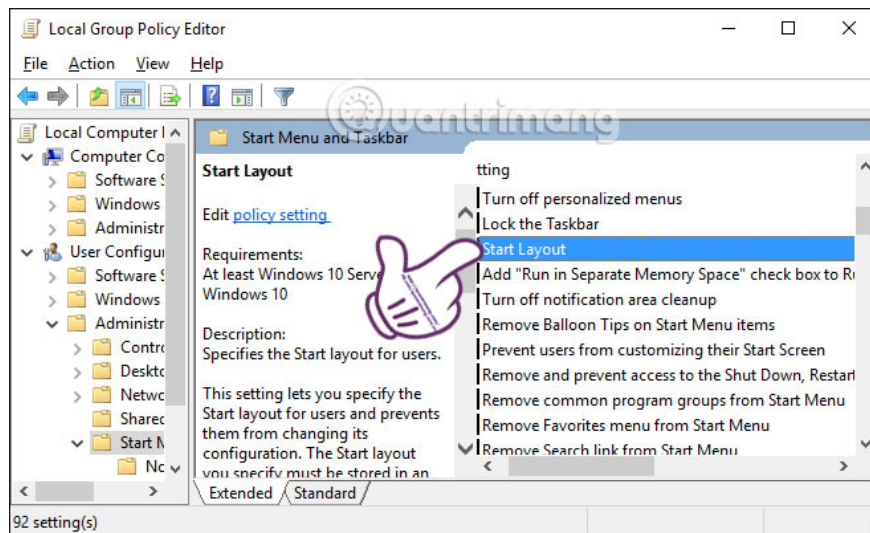
Step 4:

The dialog box interface appears to **prevent users from customizing their Start Screen**. We will click **Disabled** and then click **OK** to save the changes.

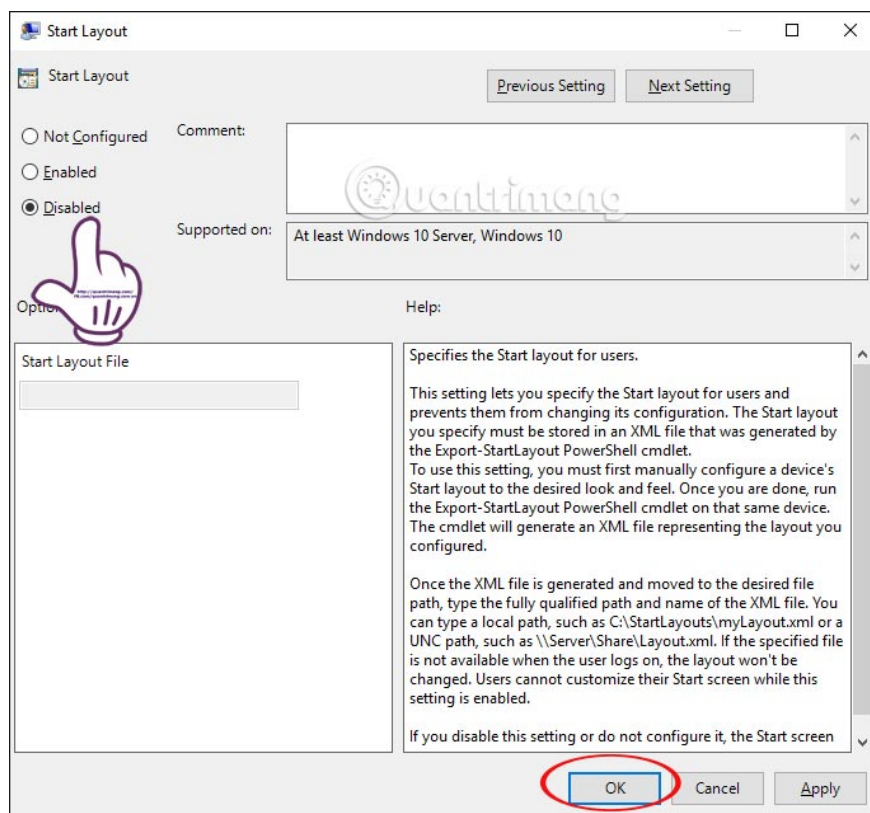


Step 5:

Also at the right interface, you find and double click on the **Start Layout** item.



The Start Layout dialog box will also appear. Check **Disabled** and OK to save.

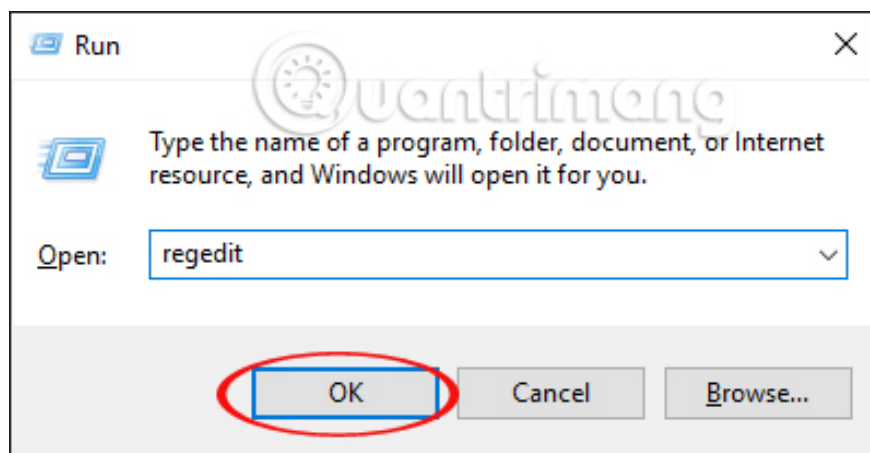


The final step is to close the Local Group Policy Editor window and restart the computer.

Method 2: Intervene in Registry Editor

Step 1:

You will also start the **Run** dialog box and enter the **Regedit** keyword and press **Enter** to continue the Registry Editor window interface.

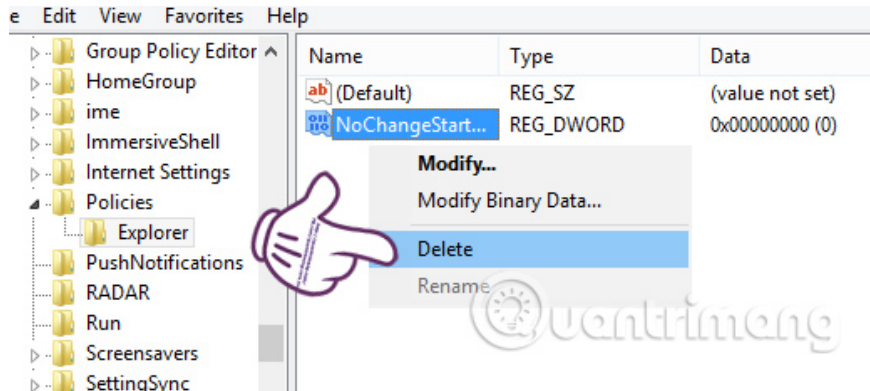


In the Registry Editor window, we follow the following two paths:

HKEY_CURRENT_USER> SOFTWARE> Microsoft> Windows> CurrentVersion> Policies> Explorer

HKEY_LOCAL_MACHINE> SOFTWARE> Microsoft> Windows> CurrentVersion> Policies> Explorer

At each **Explorer** key, look to the right interface and click on the **NoChangeStartMenu** option and select **Delete** .



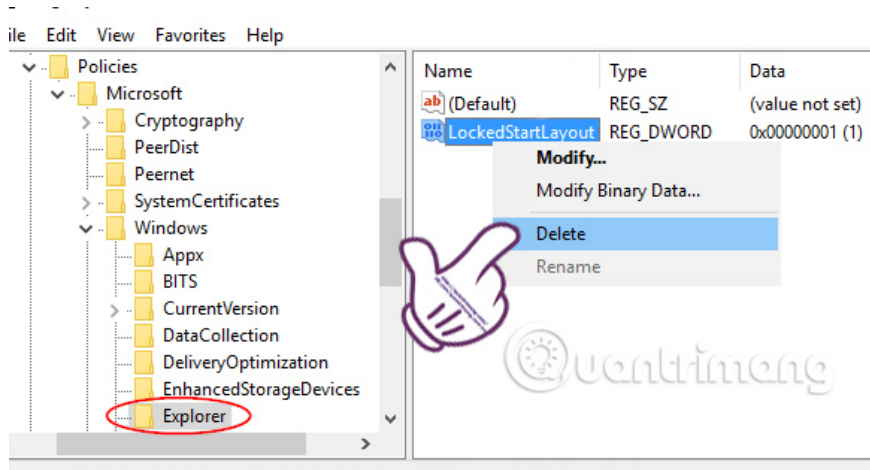
Step 3:

Next, we follow the following guidelines:

HKEY_CURRENT_USER> SOFTWARE> Policies> Microsoft> Windows> Explorer

HKEY_LOCAL_MACHINE> SOFTWARE> Policies> Microsoft> Windows> Explorer

At each **Explorer** key, on the right interface, we right-click the **LockedStartLayout** entry and then **Delete** .



As a final step, we also closed the Registry Editor window and restarted the computer to save the new settings on the computer.

Above, we have shown you two ways to fix the loss of Pin to Start icon on Windows 10 by interfering with Registry Editor or Group Policy Editor. Depending on the version of the computer you are using, choose the appropriate way to handle it, regain the Pin to Start option on Windows 10.

Refer to the following articles:

1. 7 ways to do, customize in post will help your Windows 10 "as fast as wind"
1. Summary of several ways to turn off Windows 10 computer
1. How to open the virtual keyboard in Windows 10

I wish you all success!

You finished reading the article "**How to fix Pin to Start error on Windows 10**" edited by the [TipsMake](#) team. We hope this article has provided you with many useful tech tips and tricks. You can search for similar articles on tips and guides. Thank you for reading and for following us regularly.