

How to fix Open with error on Windows

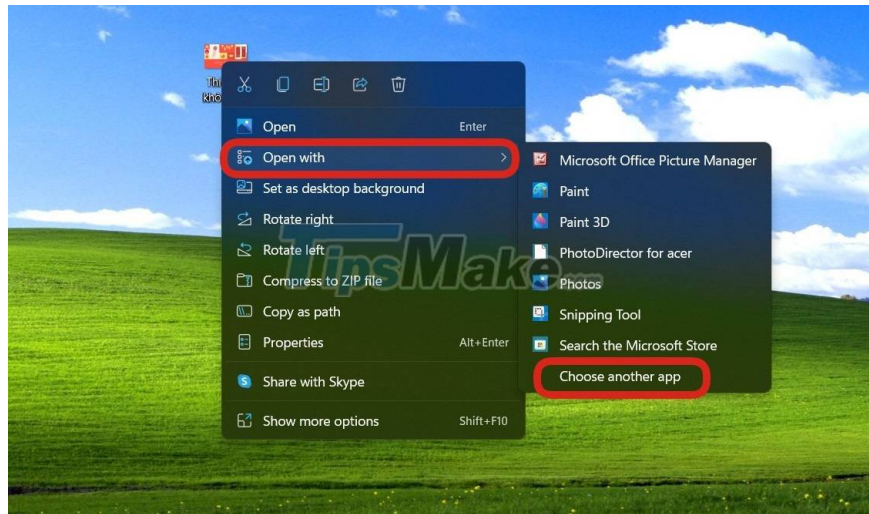
The Open with error makes you uncomfortable when you can't open the file normally. This error usually occurs when the Open with configuration is changed to software that is not intended to open the file format.

For example, Notepad is used to open .png or .jpeg image files. To fix this error you can use the following two ways:

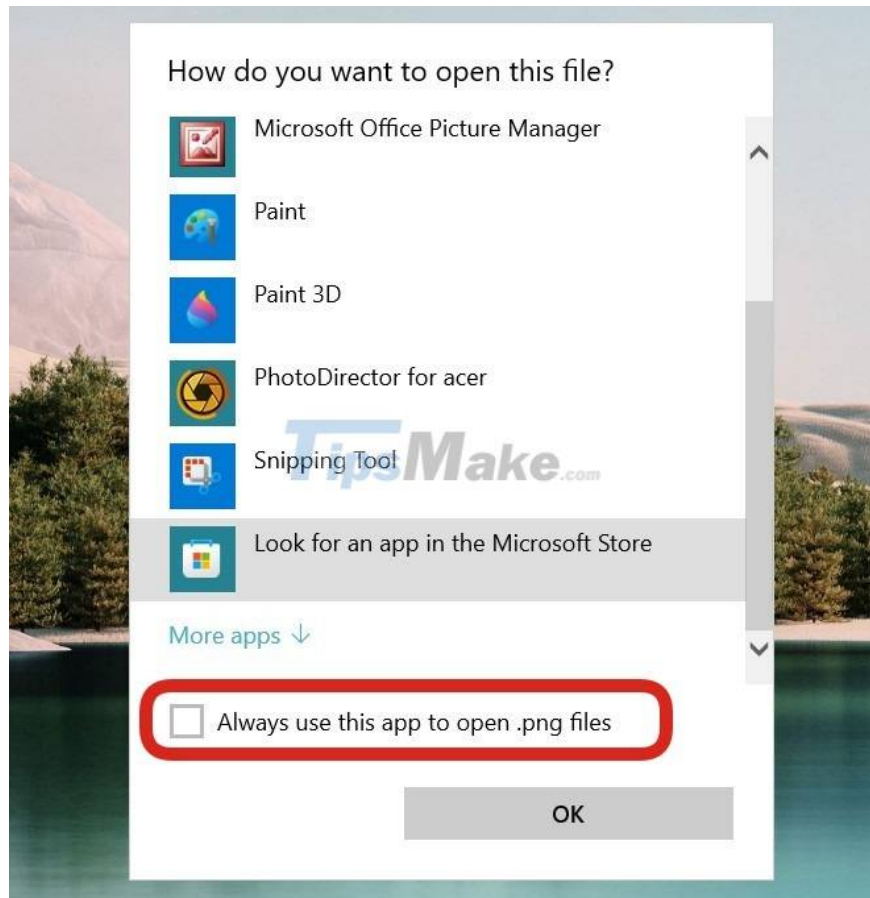
Method 1: Adjust settings Choose default program

Step 1: Right-click on the corrupted file and then select Open with

Step 2: Click Choose another app



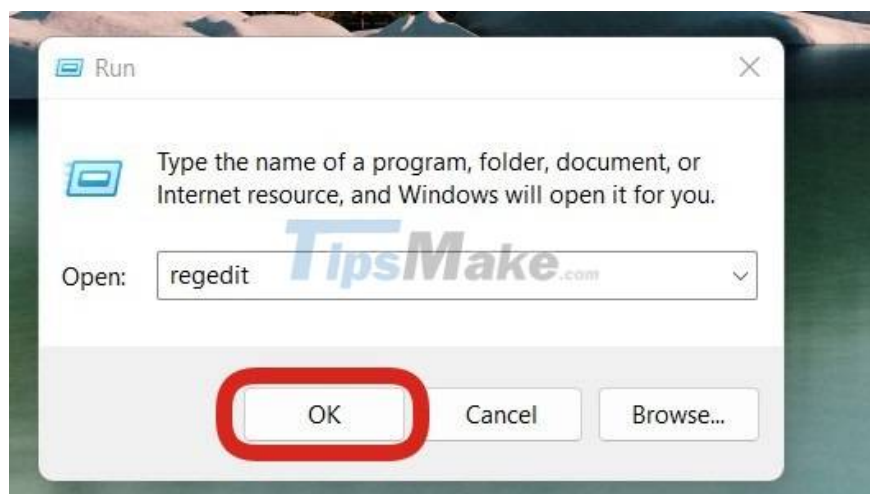
Step 3: Select the correct application for the file type, for example .png then select Photos or Paint, .doc or .docx then select Word. After selecting, click Always use this app to open file and then click OK.



Method 2: Fix Open with error with Registry

For some cases that cannot be solved by method 1, please try method 2.

Step 1: Press Win + R type regedit and then press Enter to open Registry Editor.

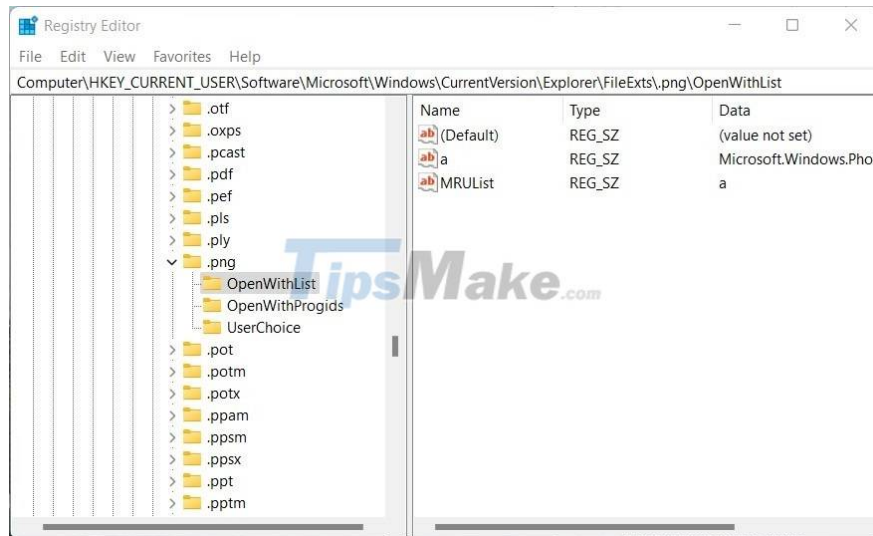


Step 2: Access the following path:

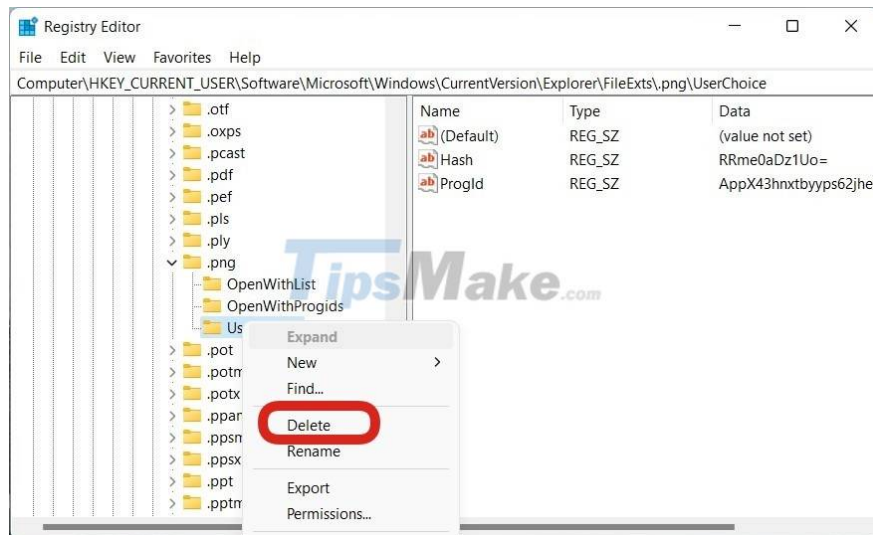
HKEY_CURRENT_USERSoftwareMicrosoftWindowsCurrentVersionExplorerFileExts

Step 3: Here you will see the file lists. You select the file to adjust the default opening application. The example in the image is a .png file.

Step 4: In the .lnk folder, click on the OpenWithList folder and then delete all the items, leaving only the item (Default) as shown in the picture. With OpenWithProgid you also delete all leaving only (Default) the same.



Step 5: Delete the UserChoice folder



With other files with errors, you can also do the same, you can set the file to open with the default application.

Good luck.

You finished reading the article "**How to fix Open with error on Windows**" edited by the [TipsMake](#) team. We hope this article has provided you with many useful tech tips and tricks. You can search for similar articles on tips and guides. Thank you for reading and for following us regularly.