

How to fix NVIDIA Control Panel 'Access Denied' error on Windows 11/10

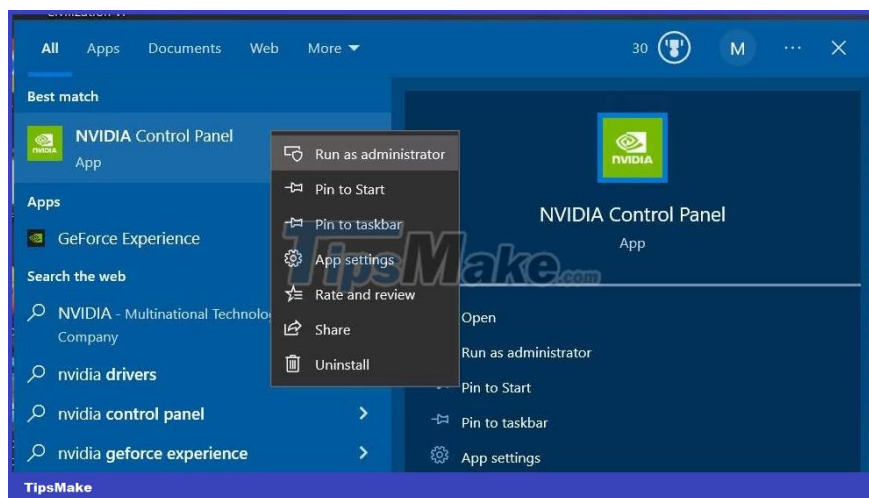
The 'Access Denied' error is mainly reported to arise for 3D installations. As a result, the NVIDIA Control Panel does not apply (save) the settings that the user chooses.

NVIDIA Control Panel is an application available on PCs with NVIDIA GPUs that users can use to change graphics settings. However, some users are unable to change NVIDIA Control Panel options due to the 'Access Denied' error. The error message says: *"Failed to apply selected settings to your system."* (The selected settings cannot be applied to your system).

The 'Access Denied' error is mainly reported to arise for 3D installations. As a result, the NVIDIA Control Panel does not apply (save) the settings that the user chooses. This is how you can solve NVIDIA Control Panel 'Access Denied' error in Windows 11/10.

1. Run NVIDIA Control Panel with admin rights

Try running NVIDIA Control Panel with admin rights first, this worked for some users. To do that, press the **Windows + S** buttons and enter **NVIDIA Control Panel** . Right click on NVIDIA Control Panel and select **Run as administrator** .



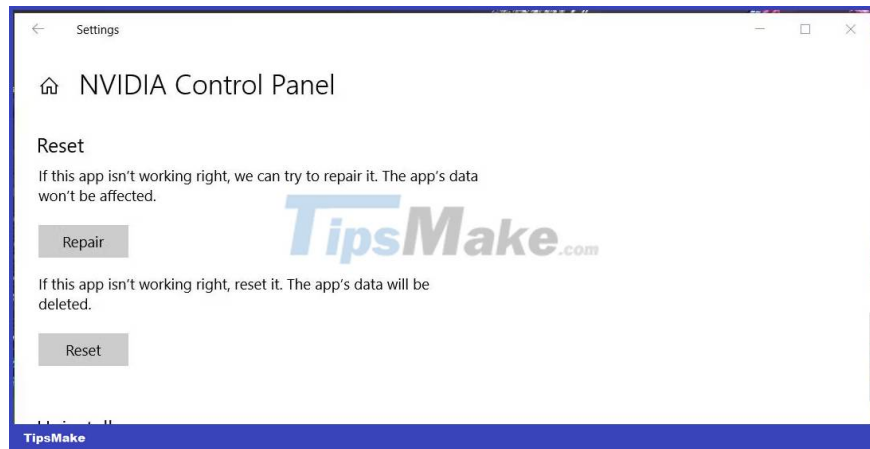
If this fixes the problem, it is better to set NVIDIA Control Panel to always run with admin rights. However, that UWP app is in a protected folder. You will need to own the WindowsApps folder to set permanent admin rights for the NVIDIA Control Panel.

If you own the WindowsApps folder, open the NVIDIA Corp subfolder to access the NVIDIA Control Panel file. Then you will need to place the nvcplui.exe file to run with admin rights. Follow the steps in the tutorial on how to set the application to always run with admin rights to set advanced permissions for the nvcplui.exe file. The path for the NVIDIA Control Panel folder is:

C:\Program Files\WindowsApps\NVIDIA Corp.NVIDIAControlPanel_8.1.964.0_x64__56jybvy8s

2. Select Repair and Reset options for NVIDIA Control Panel

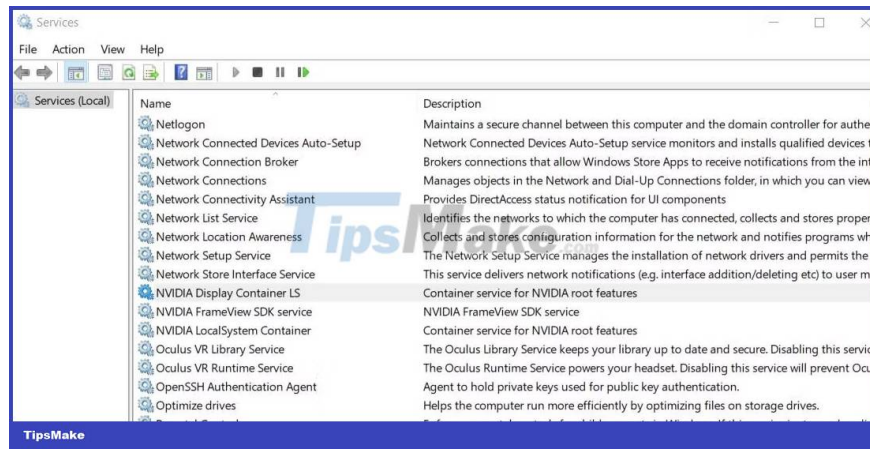
The NVIDIA Control Panel app has Repair and Reset troubleshooting options that you can choose from in Settings. Both options can be useful to fix apps when they are not working properly. So first try to select the Repair option, and then select Reset to clear the app's data if the repair is still not enough. See this article on how to reset apps in Windows for details on how to apply this potential fix.



3. Start or restart the NVIDIA Display Container service

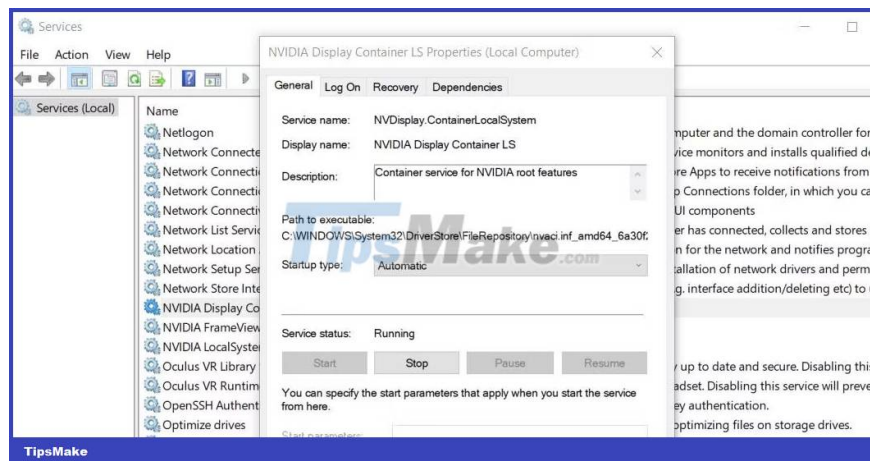
The NVIDIA Display Container is an important GPU service that runs many other NVIDIA background tasks. Make sure the service is running or restart it. You can start or restart the NVIDIA Display Container as follows:

1. Click **the Type here to search** button or the Search box on the taskbar to access the Windows file finder.
2. Type **services** inside the file search utility.
3. Select **Services** to launch the application.
4. Then double-click NVIDIA Display Container to see the settings for that service.



5. Click the **Startup type** menu and select **Automatic** from there.

6. Next, select **Start** if the NVIDIA Display Container service is stopped. Or choose **Stop** > **Start** to restart that service.



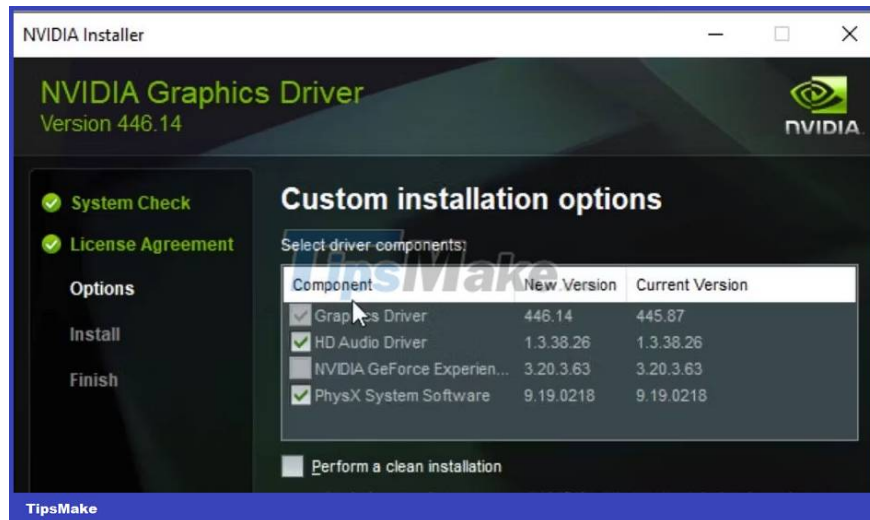
7. Click **Apply** to set up NVIDIA Display Container service settings.

8. Close the NVIDIA Display Container Properties window by clicking OK.

4. Update NVIDIA graphics card driver

The most successful fix for the 'Access Denied' error is to update the NVIDIA graphics driver manually. This is usually an issue caused by an outdated or faulty NVIDIA driver. This NVIDIA driver update guide provides more details on how to apply this potential solution, through manually downloading the latest GPU driver available from NVIDIA's website.

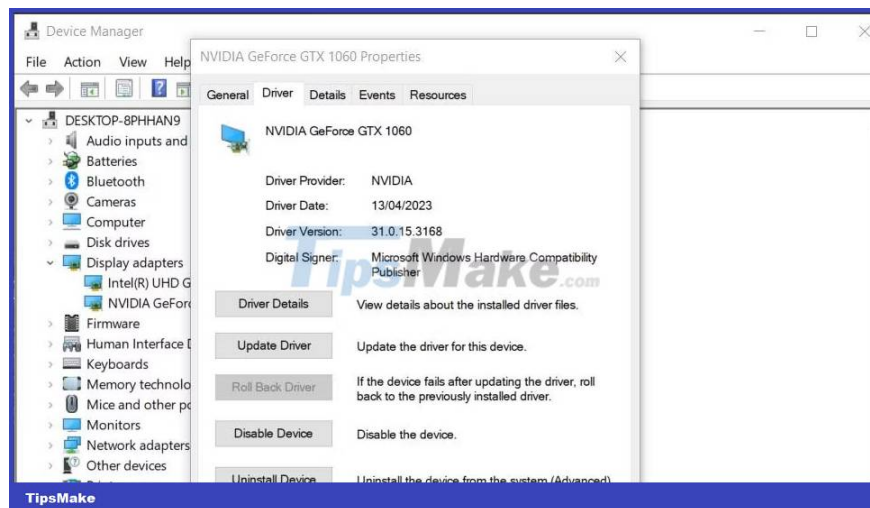
After downloading the latest NVIDIA driver package for your GPU, display the folder containing its setup file. Double-click the NVIDIA driver package file to view the setup wizard and select the **Custom** option. Then select the **Perform a clean installation** check box and click **Next** to install.



5. Go back to NVIDIA driver

If the 'Access Denied' error occurs after installing a new NVIDIA driver, then restoring to the previous driver can be a possible solution. You will only be able to do that if the previous NVIDIA GPU driver file is still present. TipsMake.com's article on how to restore drivers includes instructions on how to apply this potential fix.

If the Roll Back option is grayed out, you can still return to your previous NVIDIA graphics driver using the System Restore utility. Bringing Windows back to a restore point will restore drivers installed before the selected date. However, that will only work if your PC has a restore point before the driver update.

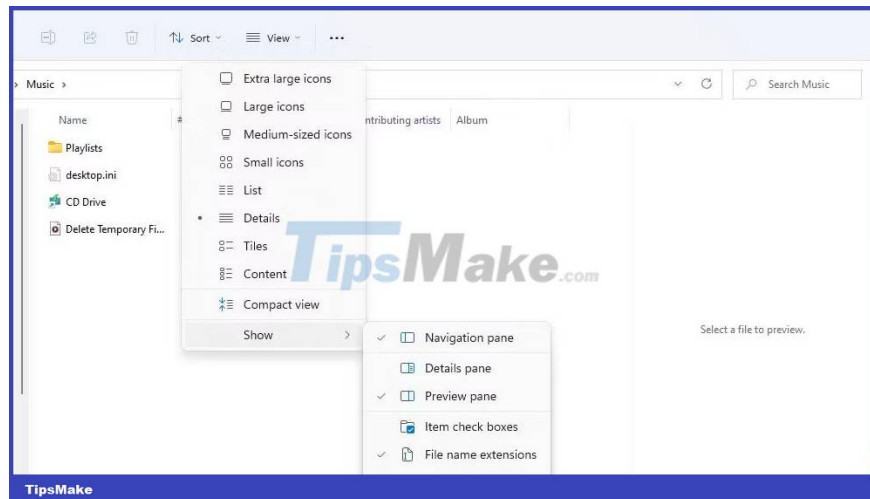


This article on how to create and use restore points shows you how to restore Windows. Select a restore point that will restore to the previous NVIDIA graphics driver. You can click **Scan for affected programs** in System Restore to check if the selected restore point restores the NVIDIA graphics driver.

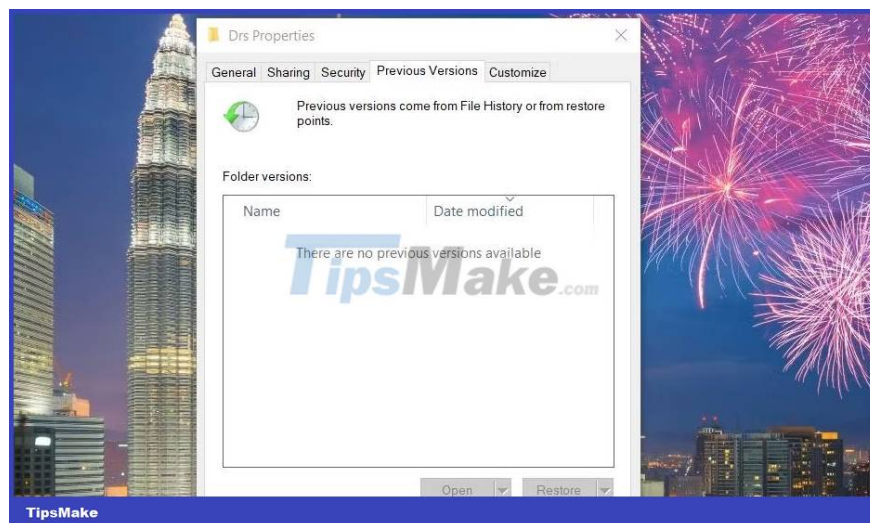
6. Restore the previous version of the DRS . folder

Some NVIDIA Control Panel users reported that they fixed the 'Access Denied' error by restoring a backup of the DRS folder version. Note that you will only be able to apply this potential fix if you have File History enabled or restored saved points on your PC. Here's how you can restore a previous DRS folder version in Windows 11/10:

1. First, open File Explorer by clicking the button on the taskbar with the folder library icon.
2. Then click the **View button to select the Show option** .
3. **Select the Hidden Items option** .



4. Remove Explorer's address bar to enter the following path:
C:\ProgramData\NVIDIA Corporation
5. Then right-click on the DRS folder and select **Properties**.
6. Click the **Previous Versions** tab .



7. Select the most recent folder version displayed in that tab.

8. Click the **Restore** button .

To select the same **Hidden Items** option in Windows 10, you need to open the **View** tab in Explorer. Then select the checkbox labeled **Hidden Items** on that tab.

7. Turn off Game Bar

You should also disable the Game Bar in case it causes any problems with the NVIDIA Control Panel. This potential solution applies more successfully with Windows 10 because Windows 11's Settings app doesn't include a specific option to disable the Game Bar.

Many users have fixed the NVIDIA Control Panel 'Access Denied' error using the potential methods mentioned above. So the probability that one of them can fix the problem on your PC is very high. Once the problem is resolved, you can change all the settings in the NVIDIA Control Panel as required.

You finished reading the article "**How to fix NVIDIA Control Panel 'Access Denied' error on Windows 11/10**" edited by the [TipsMake](#) team. We hope this article has provided you with many useful tech tips and tricks. You can search for similar articles on tips and guides. Thank you for reading and for following us regularly.