

How to fix not seeing computers in Workgroup

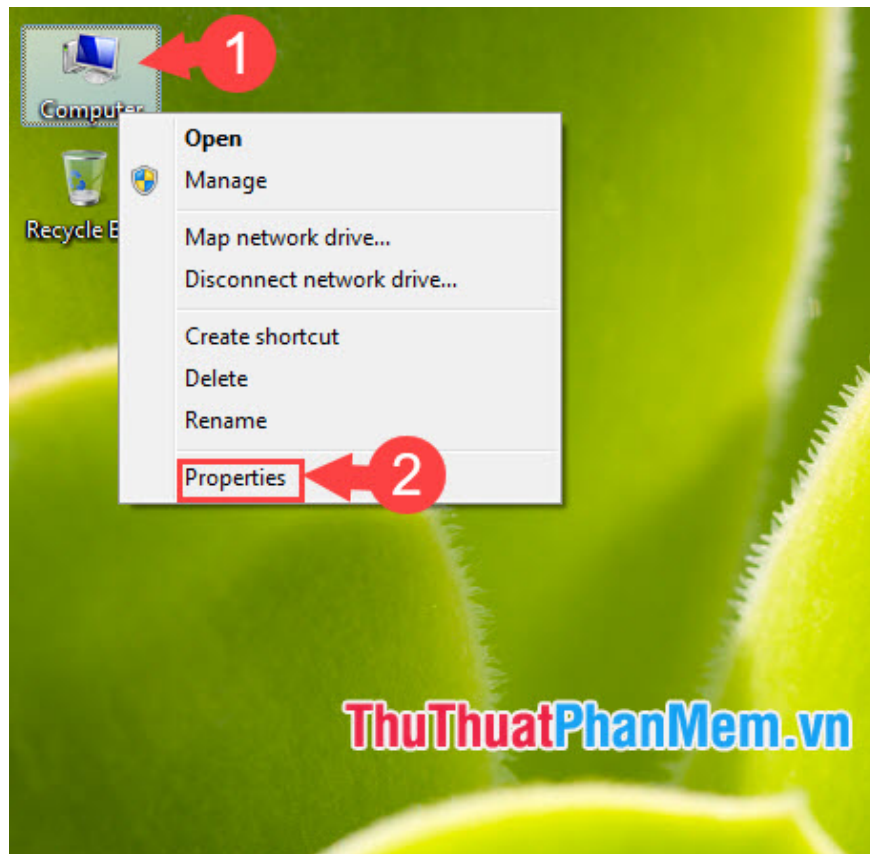
How to fix not seeing computers in Workgroup. LAN connection is one of the common and fast connections, enabling us to share files, share printers ... with fast speed and good security. The connection is not always smooth and sometimes we will encounter the error can not find other computers in a LAN Workgroup.

In the article below, let's find out some solutions to fix the error of not finding a computer in Workgroup below.

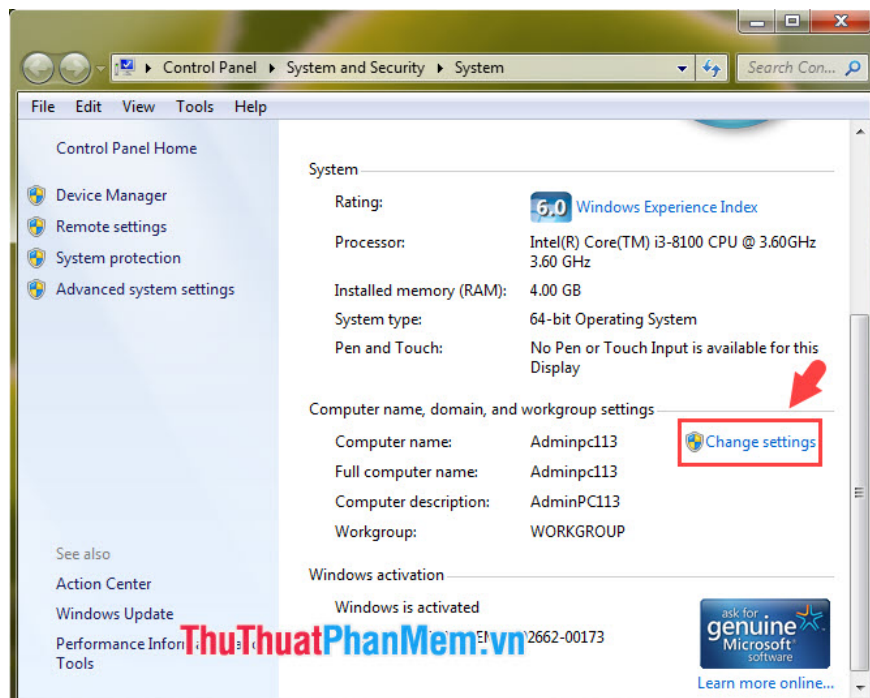
1. Check the Workgroup name

Each workgroup creates an identifier for the visitors to access and not be confused with other workgroups.

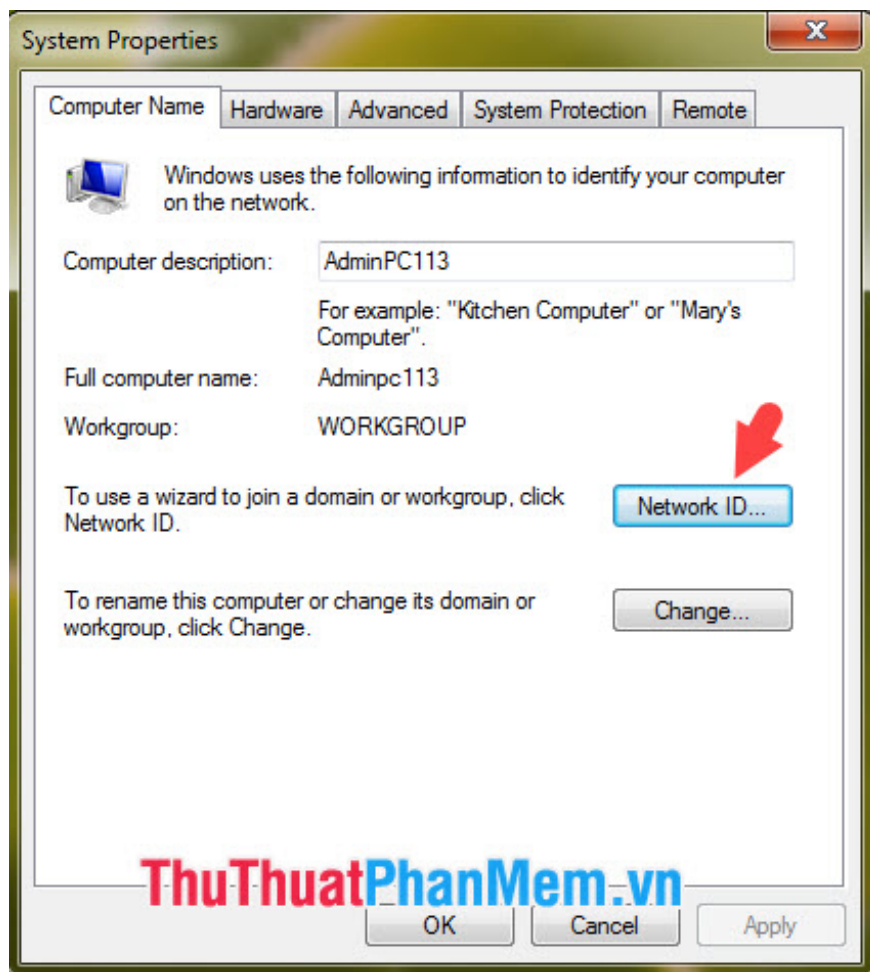
Step 1: Right-click **Computer / This PC (1)** => **Properties (2)** .



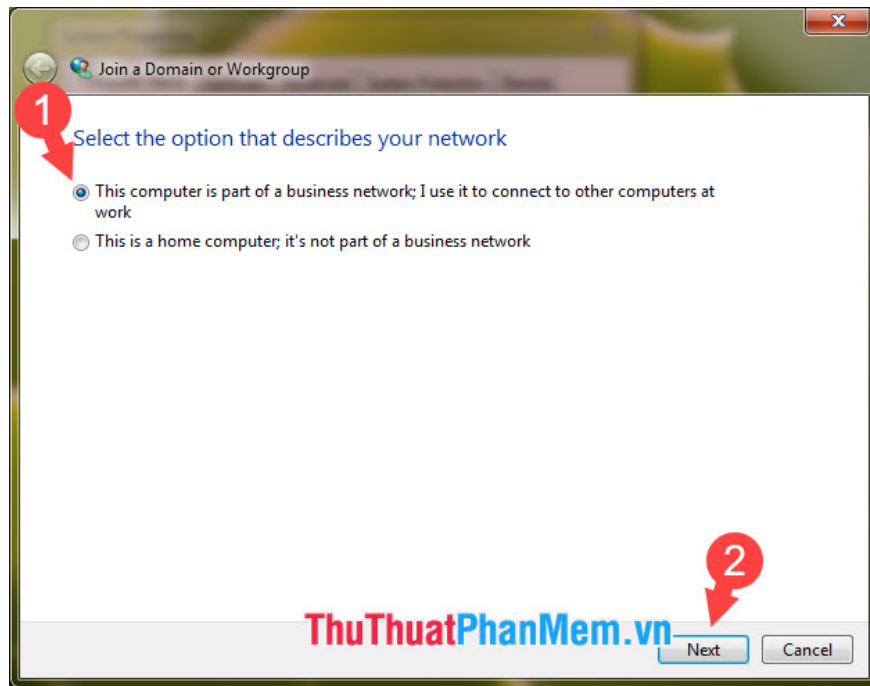
Step 2: Click **Change settings** in the **Computer name, domain, and workgroup settings** section .



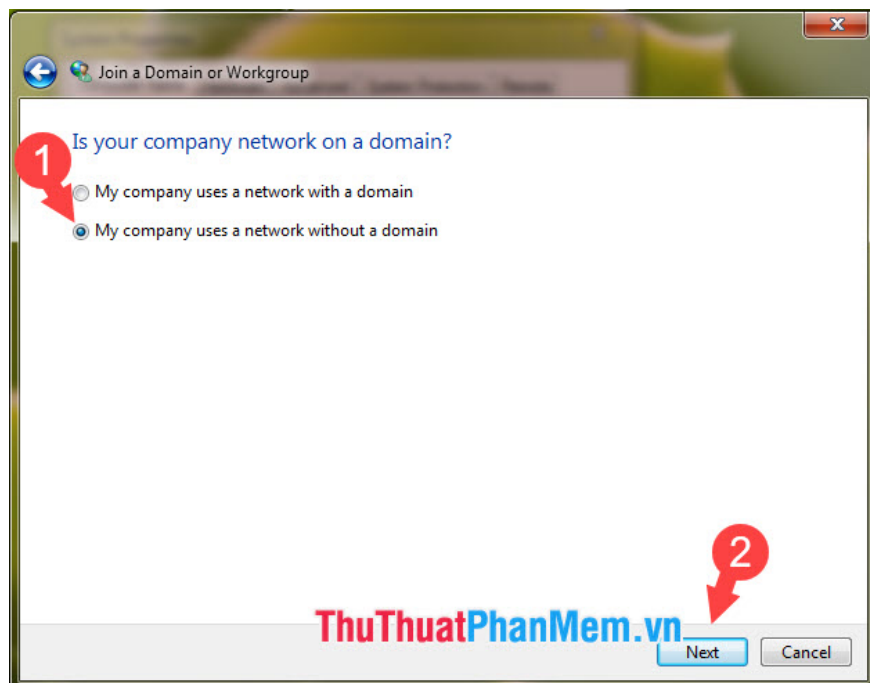
Step 3: Click on Network ID .



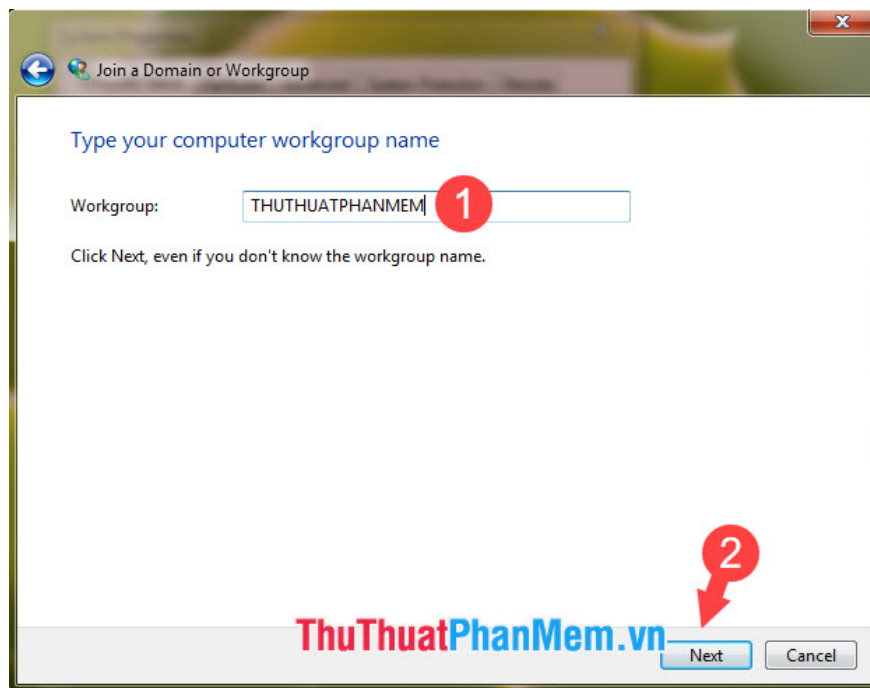
Step 4: Select the line **This computer is part of a business network; I use it to connect to other computers at work (1) => Next (2) .**



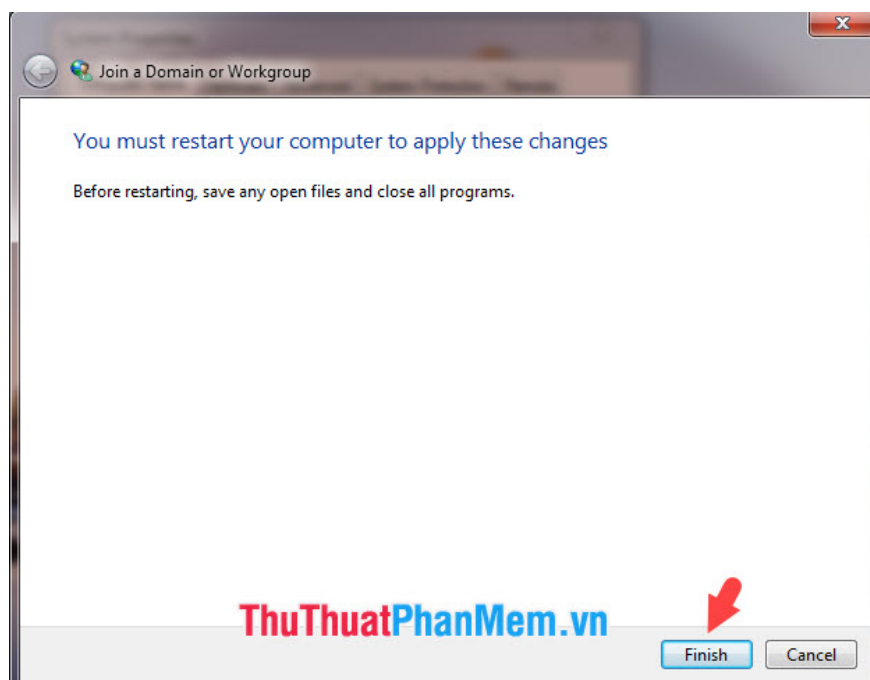
Step 5: Choose **My company uses a network without a domain (1) => Next (2) .**



Step 6: Enter the name of Workgroup (1) to join and click **Next (2) .**

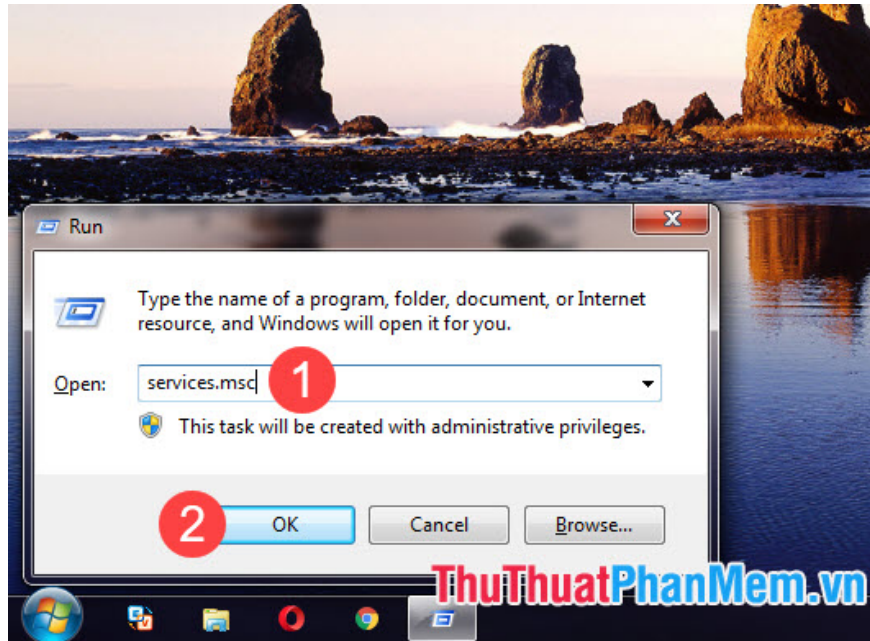


Step 7: Click on **Finish** and restart the computer.

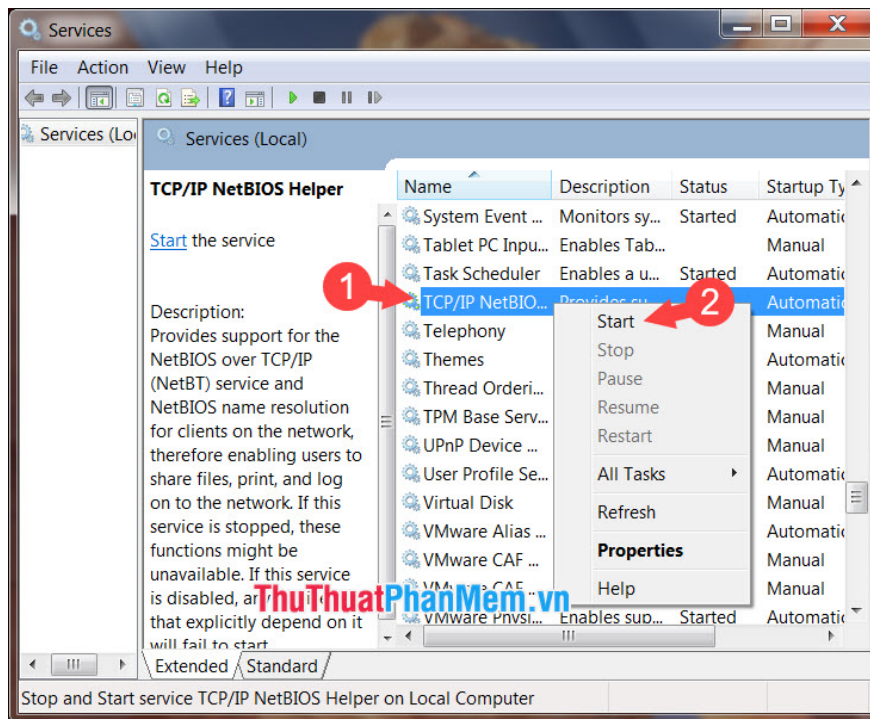


2. Turn on network services in Services

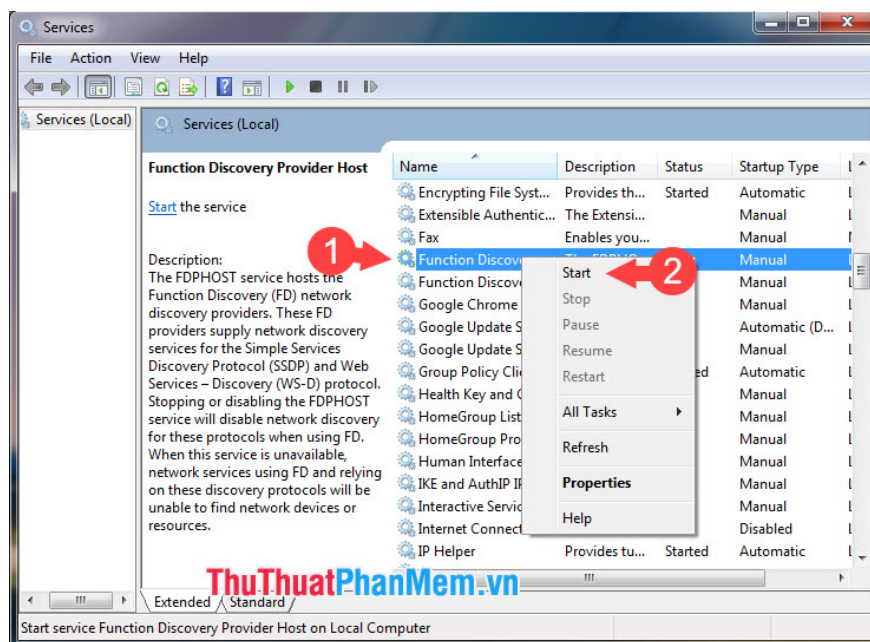
Step 1: You press the key combination **Windows + R** and enter **services.msc** (1) => **OK** (2) .



Step 2: Right-click on the **TCP / IP** service name **NetBIOS Helper Service** (1) => **Start** (2) .



Step 3: Find and right-click **Function Discovery Provider Host** (1) => **Start** (2) .



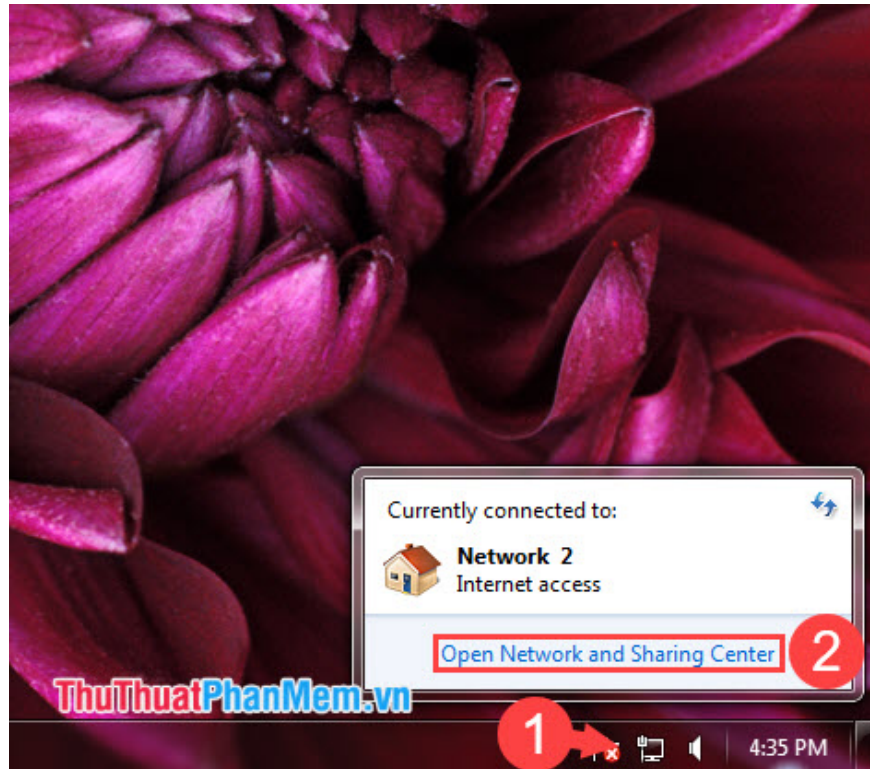
In addition, please check the following services in the Services section has started yet and proceed to turn on.

- Computer Browser Service
- COM + Event System
- DNS Client
- DHCP Client
- Function Discovery Resource Publication
- HomeGroup Provider
- HomeGroup Listener
- Network Connections
- Network Location Awareness
- Peer Networking Grouping
- TCP / IP NetBIOS Helper Service
- Remote Procedure Call (RPC)
- Server
- SSDP Discovery
- UPnP Device Host
- Workstation

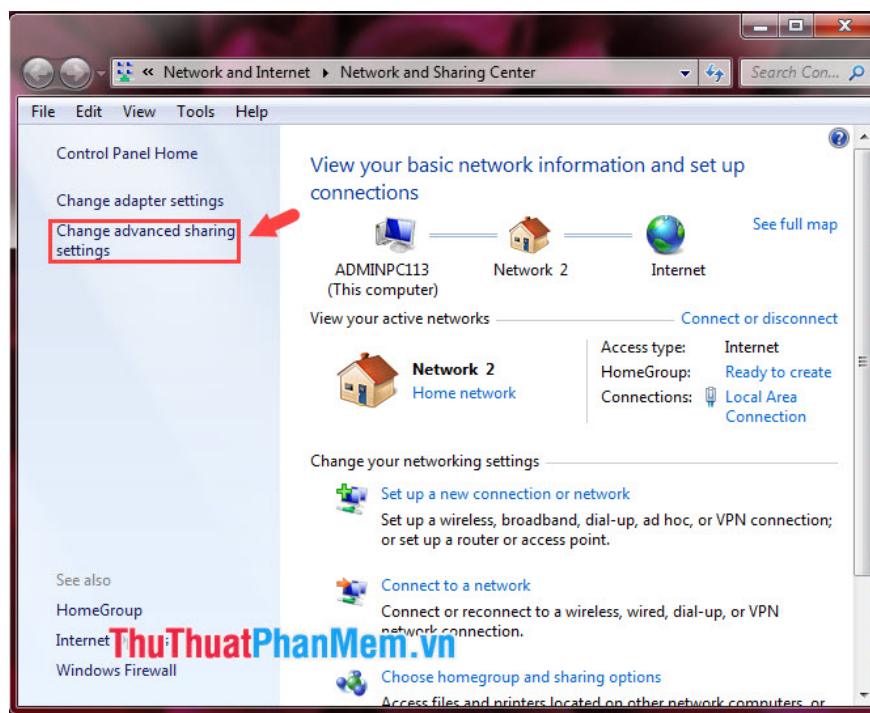
3. Set up Network Discovery and File Sharing

On Windows 7

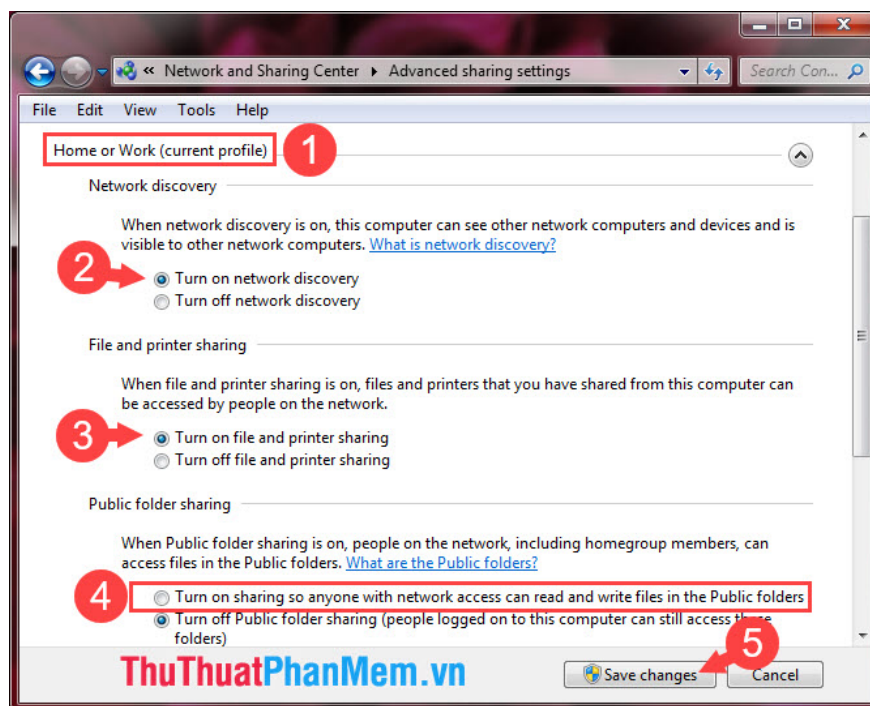
Step 1: Click on **Network (1)** => **Open Network and Sharing Center (2)** .



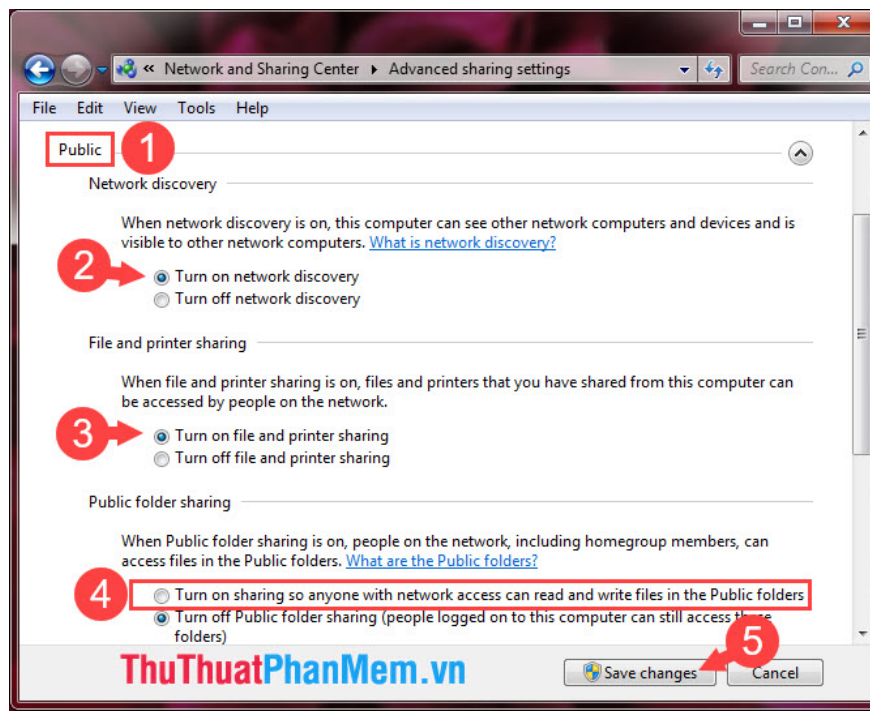
Step 2: Click on **Change advanced sharing settings** .



Step 3: Select the **Home or Work** network (1) => select **Turn on network discovery** (2) => **Turn on file and printer sharing** (3) => **Turn on sharing so anyone with network .** (4) => **Save Changes** (5) .

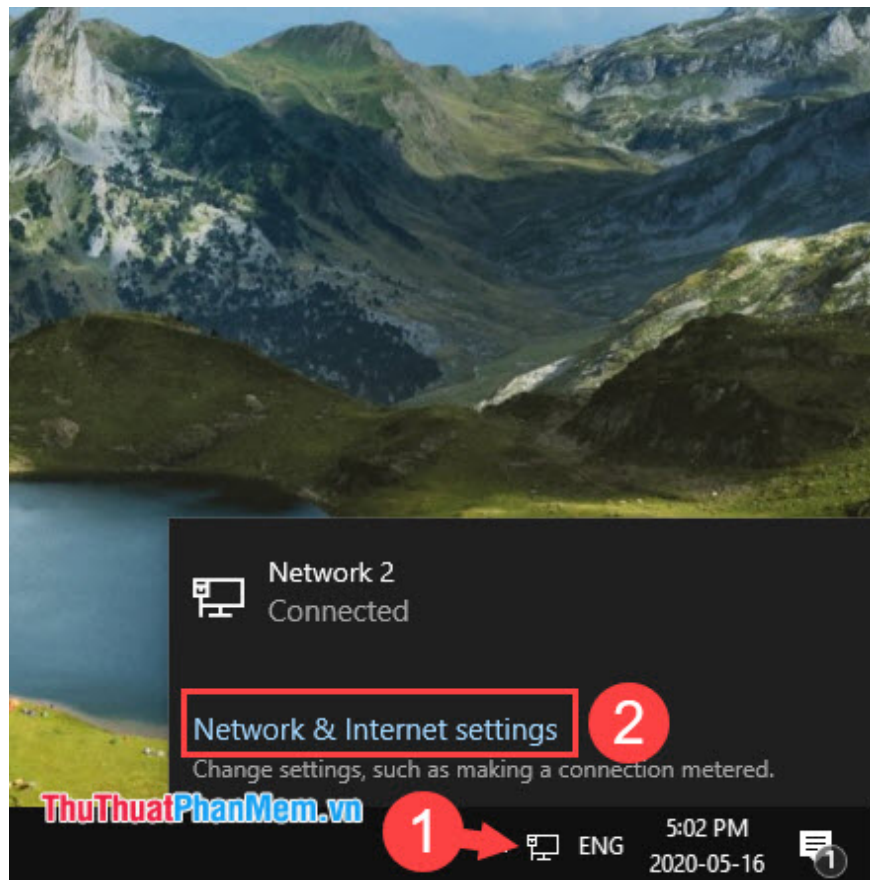


Step 4: Go to the **Public** section and do the same as the above step.

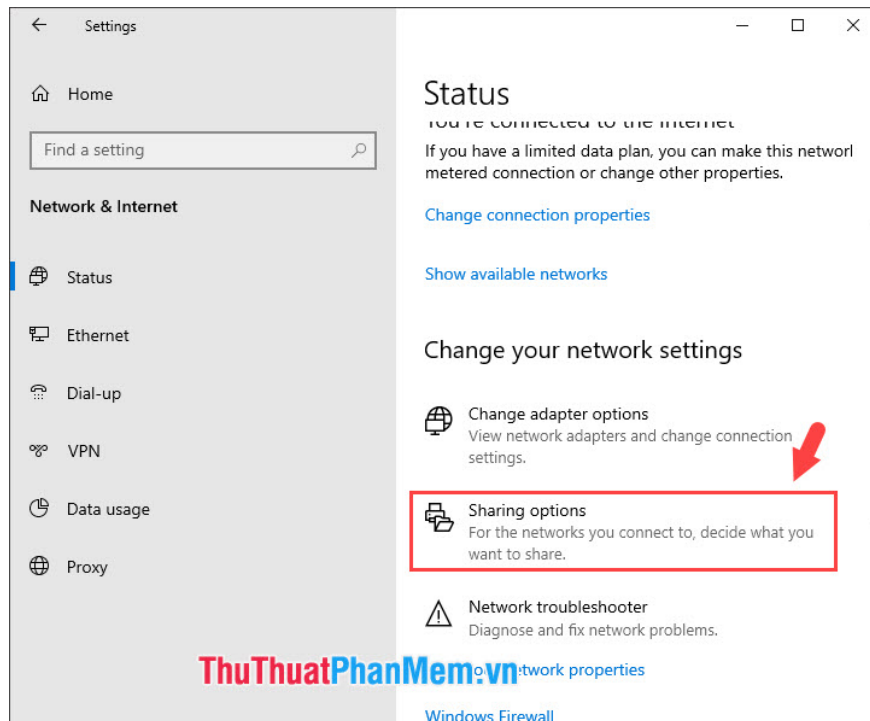


On Windows 10

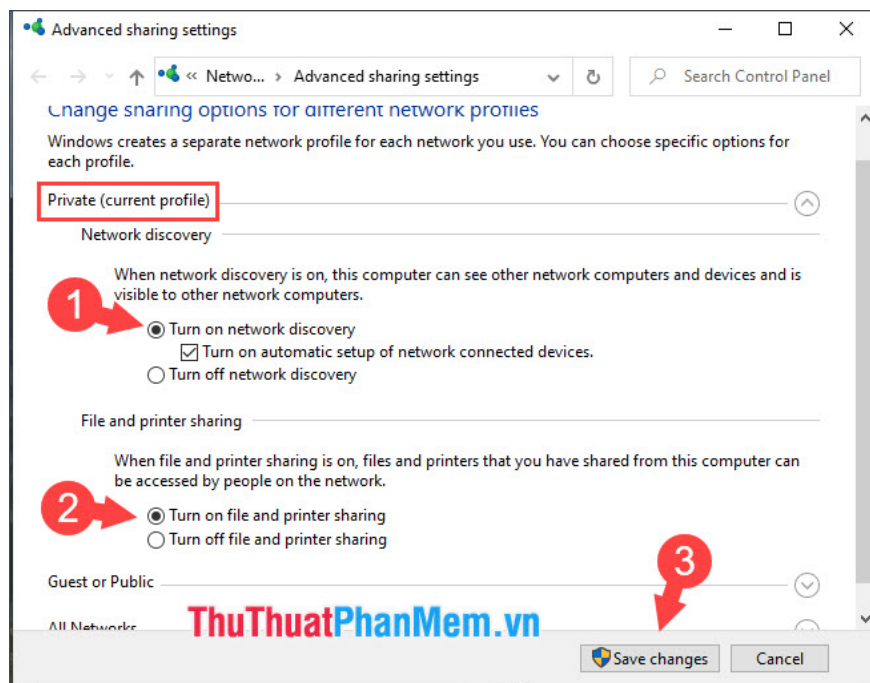
Step 1: Click the **Network** icon (1) => **Network & Internet settings** (2) .



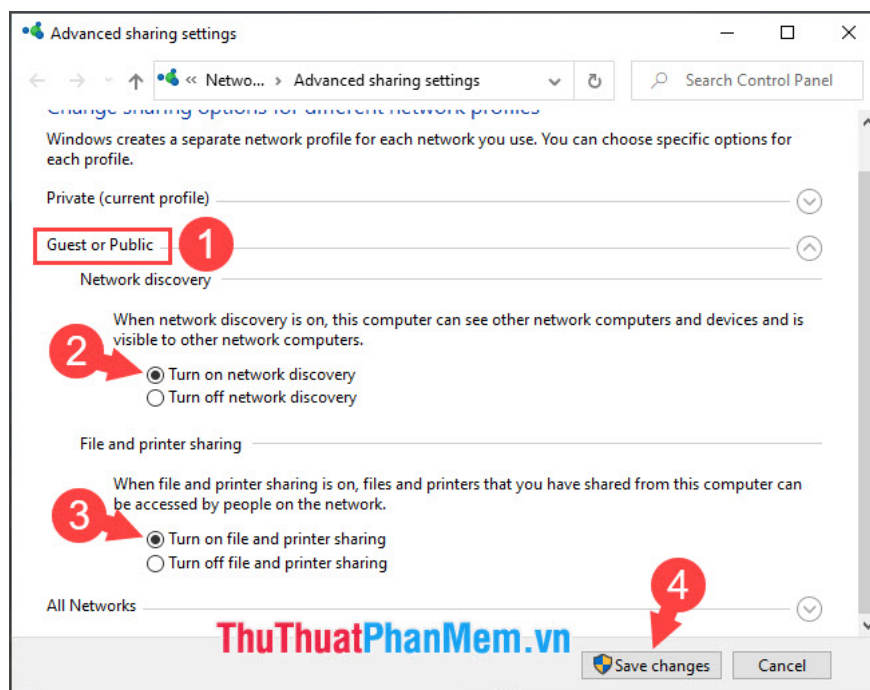
Step 2: Click on **Sharing options** .



Step 3: Choose **Private** => **Turn on network discovery (1)** => **Turn on file and printer sharing (2)** => **Save changes (3)** .



Step 4: Go to the **Public** section and do the same step above.



With the instructions in the article, you can see other computers in the LAN Workgroup easily. Good luck!

You finished reading the article "**How to fix not seeing computers in Workgroup**" edited by the [TipsMake](#) team. We hope this article has provided you with many useful tech tips and tricks. You can search for similar articles on tips and guides. Thank you for reading and for following us regularly.