

How to fix 'No Speaker or Headphones are Plugged In' error on Windows

Sometimes, you may notice a red X appearing on the sound icon on the Windows taskbar. If you hover your mouse over it, it gives an error that no speakers or headphones are plugged in.

This error can be caused by a problem with the Windows sound driver or sound service. To fix the error, run the built-in audio troubleshooter to find and fix common problems with audio devices. If not, you can perform an audio driver restore or manually reinstall the audio driver to restore system sound.

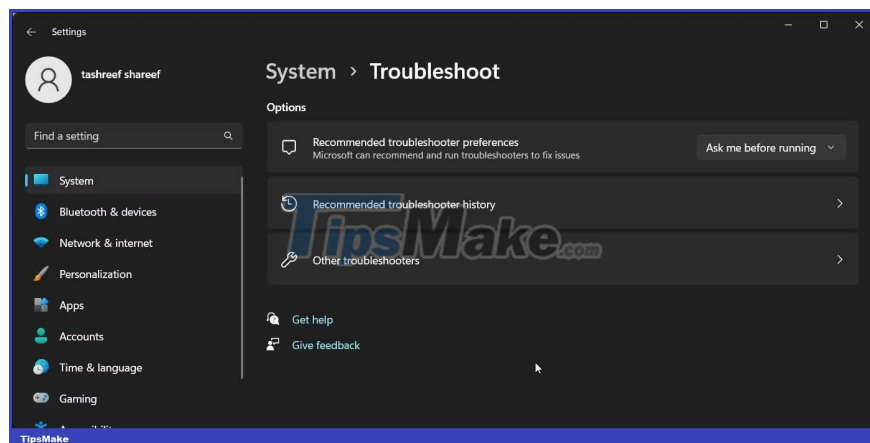
Here are some steps to help you fix the "No Speaker or Headphones are Plugged In" error on Windows.

1. Run the Windows sound troubleshooter

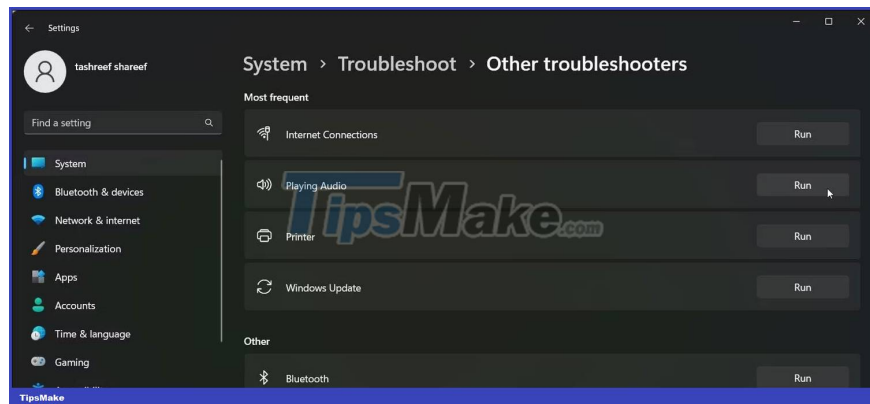
You can fix sound problems on Windows using the built-in audio troubleshooter. It scans your Windows system for common audio problems and tries to fix them automatically.

To run the troubleshooter, do the following:

1. Press **Win + I** to open Settings.
2. In the **System** tab , scroll down and click **Troubleshoot** .
3. Next, click **Other troubleshooters** .



4. Click the **Run** button for **Playing Audio** . It will check the audio service status and prompt you to select your audio device.



5. Select your device speakers and click **Next** .

6. Click **NO** , **Do not open Audio Enhancements in the Turn off Sound Effects and Enhancements** dialog box .

7. Apply any suggested fixes and check the results.

2. Perform an audio device driver restore

If a Windows update or driver has damaged your audio device, you can perform a driver restore to reuse the most recent working driver. You can use Device Manager to restore drivers in Windows.

To restore audio device drivers, follow TipsMake.com's instructions on how to restore drivers in Windows. You will probably find your audio driver in the **Sound, video, and game controllers** section of Device Manager.

3. Add Network Service and Local Service to Local Administrator Group

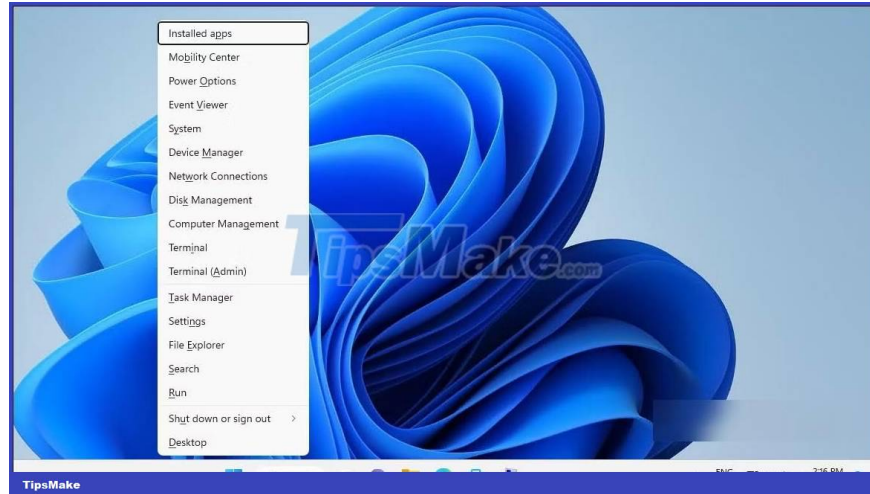
Another way to fix this error is to add Network Service and Local Service to the Local Administrator Group. Network Service and Local Service are a predefined account part of the service control manager. Adding these accounts to the Local Administrator Group will help you fix audio problems on your Windows PC.

Note that Local Users and Groups are not available on Windows Home editions. However, Home users can add Network Service and Local Service to the Local Administrator Group using the Command Prompt.

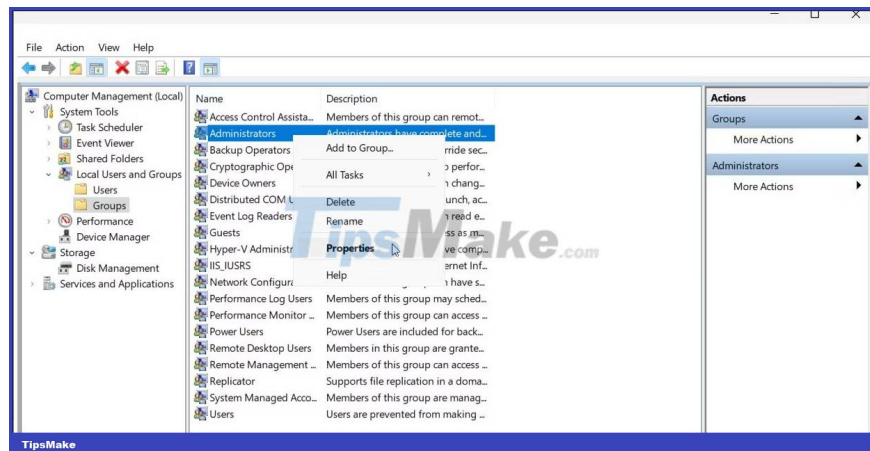
To add Network Service and Local Service to Local Administrator Group using Local Users and Groups:

1. Press **Win + X** to open the WinX menu.
2. Click **Computer Management** .

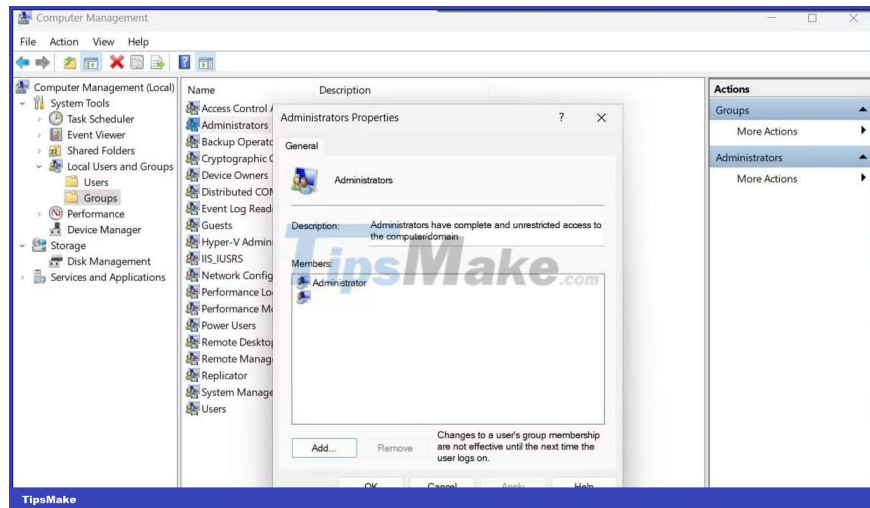
3. In **Computer Management** , click **Local User and Groups** .



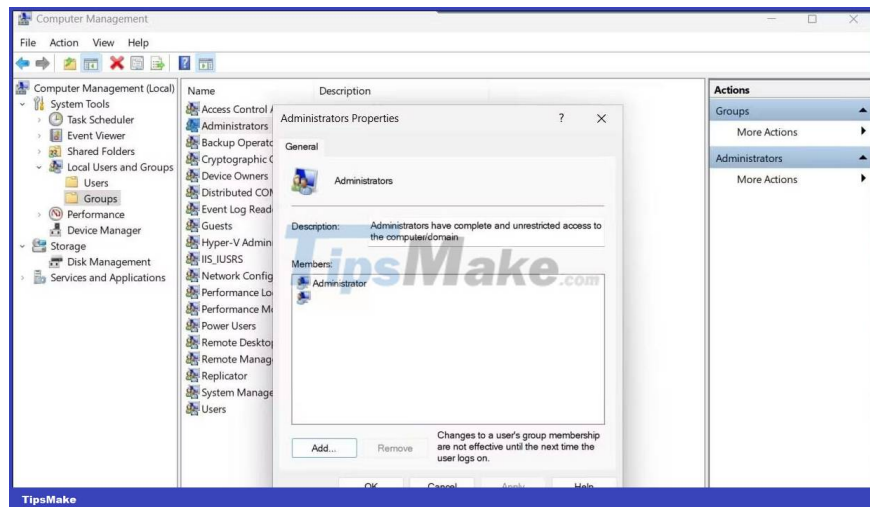
4. In the right pane, double-click **Groups** to see all local accounts.



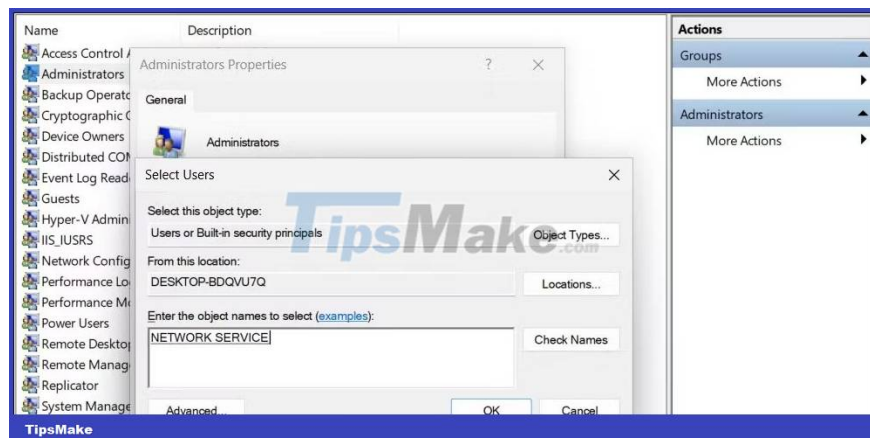
5. Select and right-click the **Administrators** account and select **Properties** .



6. Click the **Add** button in the **Administrator Properties** dialog box .



7. Next, enter **network service** and click **Check Names** . It will change the object name to **NETWORK SERVICE** .



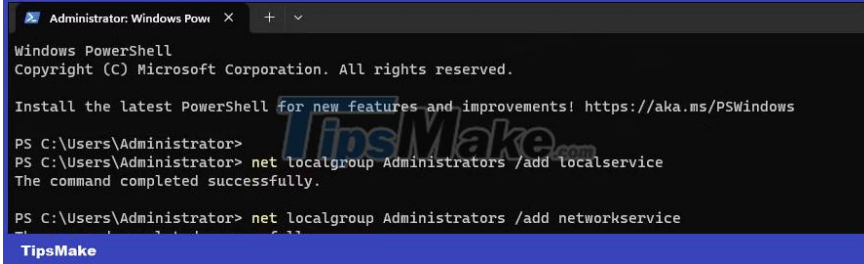
8. Click **OK** to add the network service to the local user group.

9. In the **Administrator Properties** dialog box , you will see **NT AuthorityNetwork Service** added as the member .

10. Click the **Add** button again and repeat the steps to add **Local Services** to the group.

11. Once done, click **Apply > OK** to save the changes.

If you use the Windows Home edition, you can use the Command Prompt to add **Local Network** and **Local Service** to the local administrators group. Here's how to do it.



```
Administrator: Windows Powe... X + v
Windows PowerShell
Copyright (C) Microsoft Corporation. All rights reserved.

Install the latest PowerShell for new features and improvements! https://aka.ms/PSWindows

PS C:\Users\Administrator>
PS C:\Users\Administrator> net localgroup Administrators /add localservice
The command completed successfully.

PS C:\Users\Administrator> net localgroup Administrators /add networkservice
The command completed successfully.

TipsMake
```

1. Press the **Win** key and type **cmd**.

2. Open Command Prompt with admin rights.

3. In the Command Prompt window, type the following to add "local service" to the Local Group Administrator:

```
net localgroup Administrators /add localservice
```

4. Next, type the following command to add "network service" to the Local Group Administrator account:

```
net localgroup Administrators /add networkservice
```

5. If both commands are executed successfully, type **exit** and press **Enter** to close Command Prompt.

6. Restart the PC and check if the error is fixed.

4. Uninstall drivers and audio devices

A temporary problem with the audio device driver can cause this error on Windows. To fix the problem, uninstall the associated audio device and driver from Device Manager. After rebooting, Windows will automatically reinstall the driver to solve the problem.

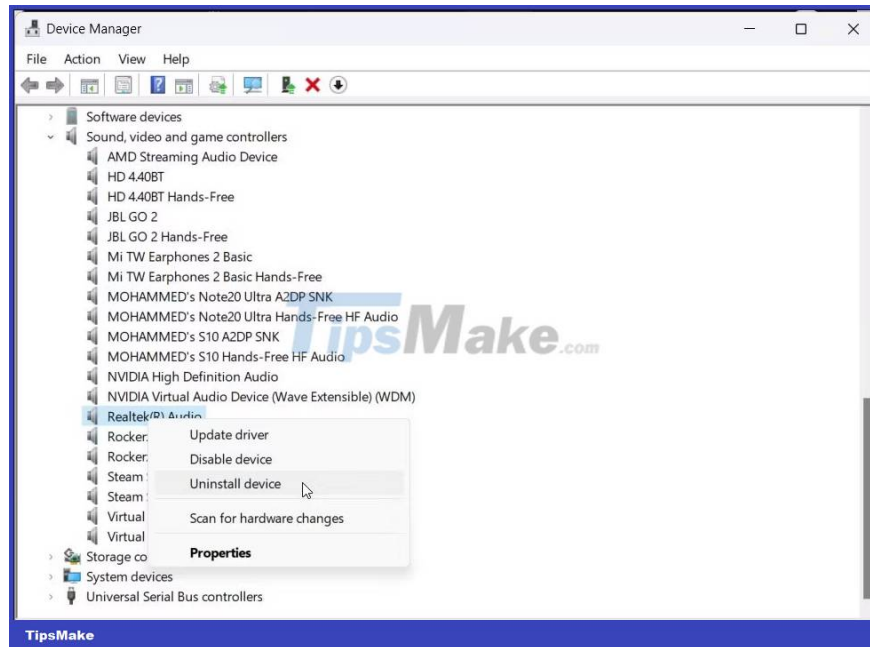
To uninstall an audio device:

1. Press **Win + X** to open the WinX menu.

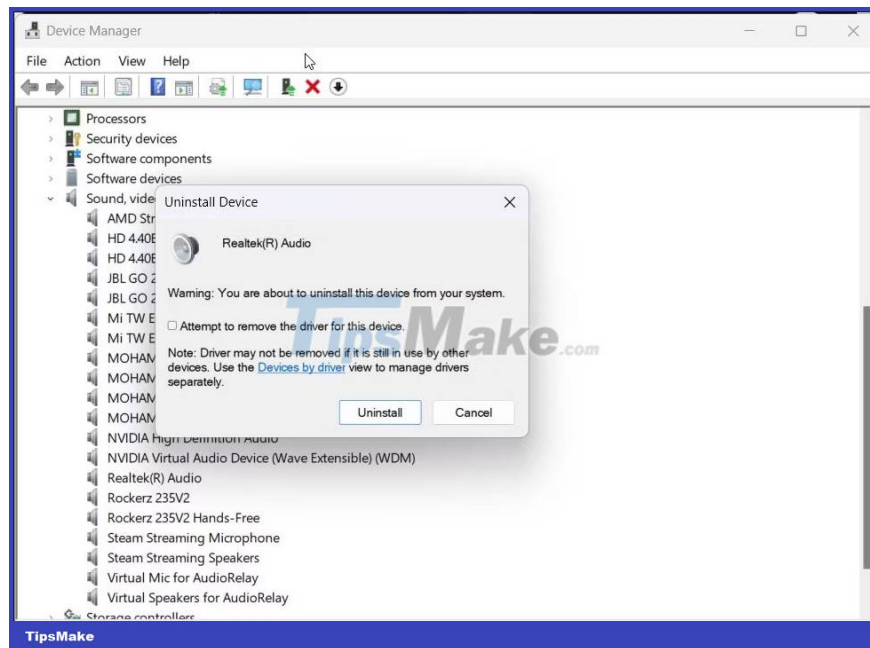
2. Click **Device Manager** from the context menu.

3. In **Device Manager** , expand **Sound, video, and game controllers** section .

4. Right click on your audio device, such as **Realtek Audio**.



5. Select the **Attempt to remove the driver for this device** option in the **Uninstall Device** dialog box .



6. Click **Uninstall** to remove the device.

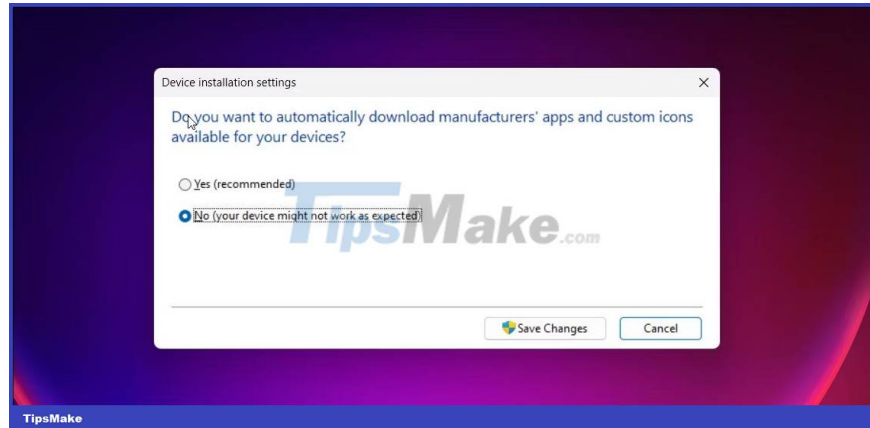
7. After uninstalling, restart the PC. Windows will automatically install the necessary drivers for your audio device.

If the problem persists, manually reinstall the audio device driver from the manufacturer.

5. Manually reinstall the audio device driver

If the automatic reinstall doesn't work, check if your computer manufacturer or audio device OEM has a stable version of the driver available. On a laptop, go to your computer manufacturer's website and download the latest audio driver from there. On a desktop computer, you can download the latest driver for your sound card from the manufacturer's website. Alternatively, you can also manually reinstall an existing driver for your audio device.

If the problem persists, change the device settings and then reinstall the driver. To change device settings:



1. Press the **Win** key and enter **device installation settings** .
2. Next, click **Change device installation settings** from the search results.
3. **Select the No (your device might not work as expected)** option in the **Device installation settings** dialog box .
4. Click **Save Changes** . Click **Yes** if prompted by User Account Control.

With automatic driver download disabled, reinstall an existing driver to fix the no sound problem.

You finished reading the article "**How to fix 'No Speaker or Headphones are Plugged In' error on Windows**" edited by the [TipsMake](#) team. We hope this article has provided you with many useful tech tips and tricks. You can search for similar articles on tips and guides. Thank you for reading and for following us regularly.