

How to fix the 'Limited or No Network' error on Windows 10

Suddenly, your Windows 10 can't connect to the network or displays a 'limited access' message. So, how do you fix the limited network access error on Windows 10? Restore your Windows 10 to its previous state and reconnect to the network.

There are many reasons why a computer might be unable to connect to the network, or **experience network limitations** on Windows 10. Fortunately, Windows 10 offers many ways to fix **this internet connection issue** , and you have many options and methods to choose from.

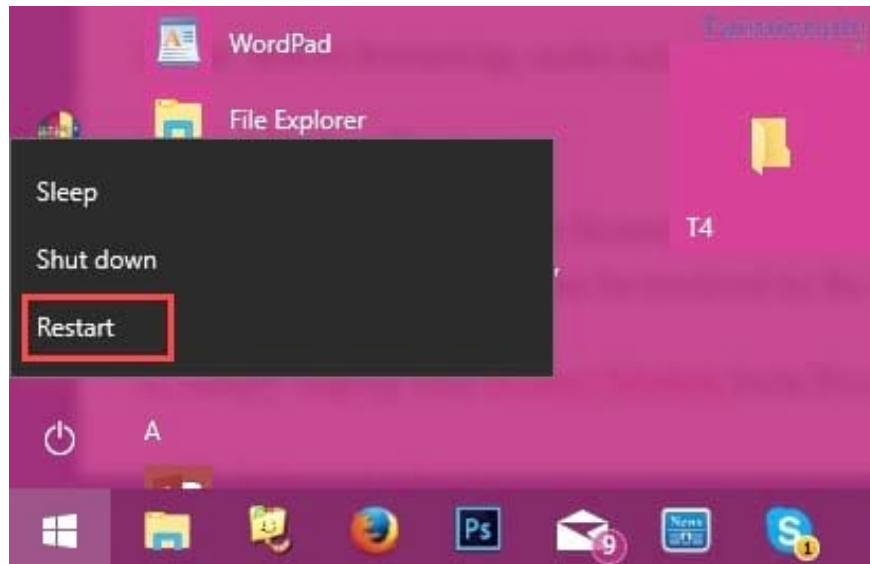


With the methods listed below by TipsMake, you can apply each one until you successfully **fix the Windows 10 network connection error** . It's not necessary to apply all the methods because the cause of your computer or laptop's network loss might only fall under one of the troubleshooting steps we've provided.

Limited network error on Windows 10, no network error on Windows 10

Restart your computer.

One way to fix the "limited network" or "no network" error on Windows 10 is to restart your computer. You can restart your computer and try logging back in to see if the errors are resolved.



Restart the modem.

Sometimes, your modem might be running for too long or there might be some other reason causing problems with your device's system. The best solution is to unplug the power cord, turn off the modem, and wait 5 to 10 minutes for the IP address to automatically reset. Then, turn it back on to see if the network restriction issue on Windows 10 has been resolved.



Check the network cable.

Try checking your network connection via cable if there's no network on either your computer, laptop, or modem. See if the indicator lights are on; it's highly unlikely the problem is with the network cable.



Thanks to Windows 10 for detecting a bug with Network Troubleshooting.

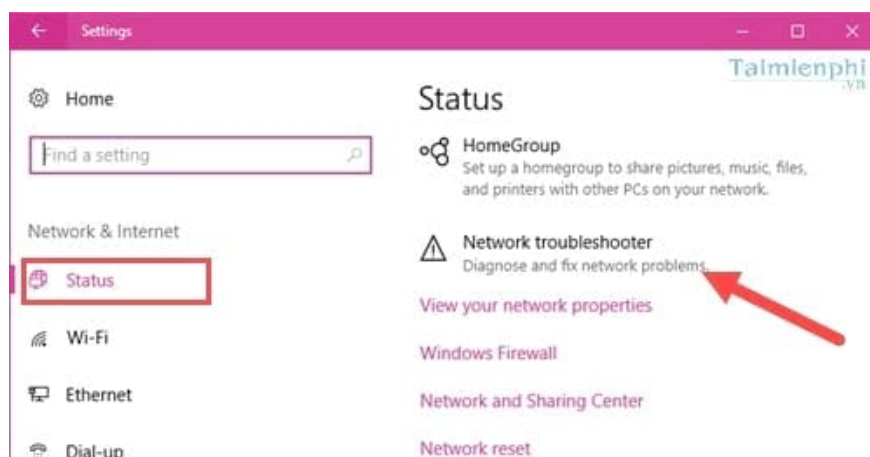
*Step 1: Open the **Start Menu** and click the **Settings** icon .*



*Step 2: In Windows Settings, select **Network & Internet** – this section allows you to set up, create, and fix network-related issues.*



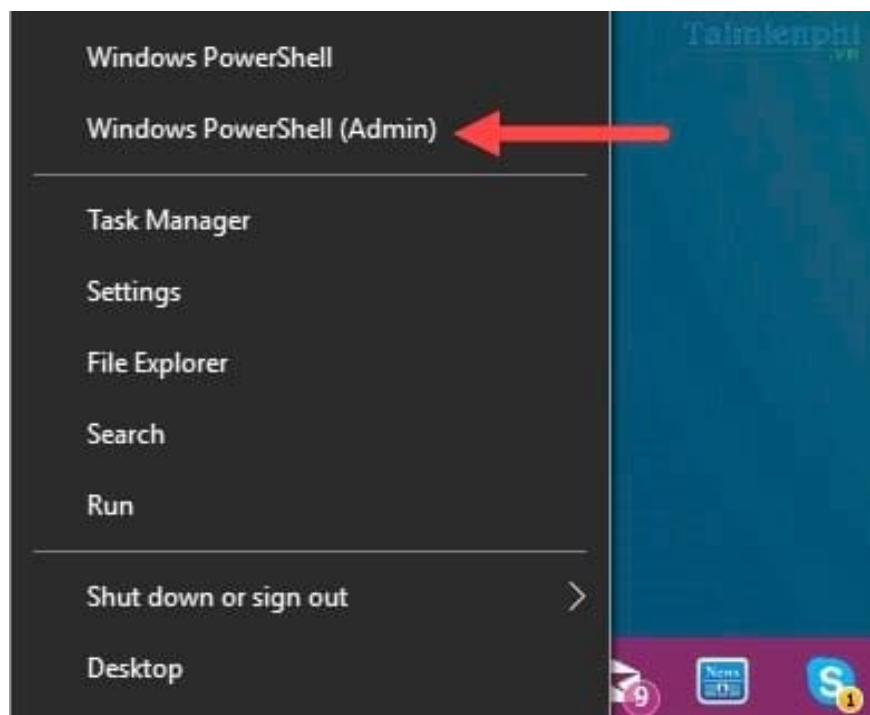
Step 3: In the **Status** tab, click on **Network Troubleshooter** and follow the instructions to allow the system to automatically check for errors.



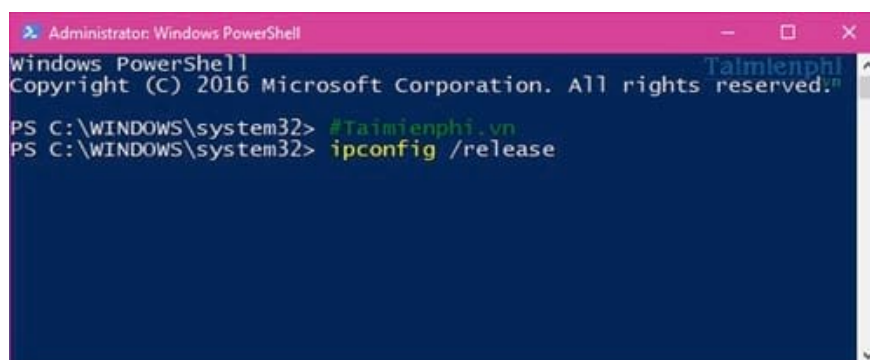
After checking for errors, restart your computer to complete the process of fixing the network restrictions issue on Windows 10.

Fix network restrictions on Windows 10 using PowerShell and Command Prompt.

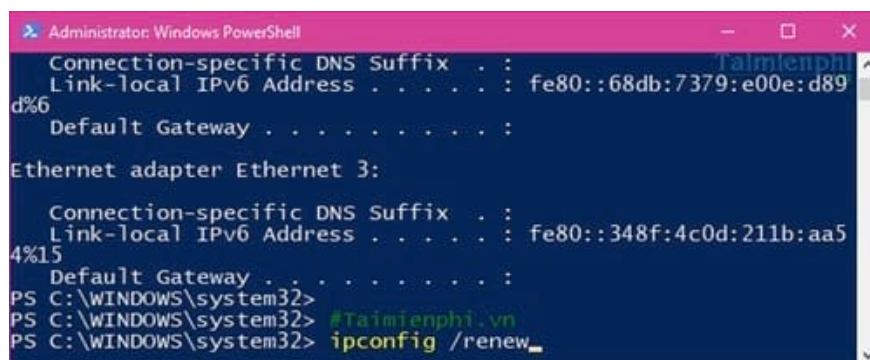
Step 1: You can choose to use either **Command Prompt** or **PowerShell** from your Power Menu. Press the **Windows + X** key combination to access **the Power Menu** .



Step 2: After you open **Command Prompt** (in this example, **PowerShell**), type the following command to release your IP address: "ipconfig /release"

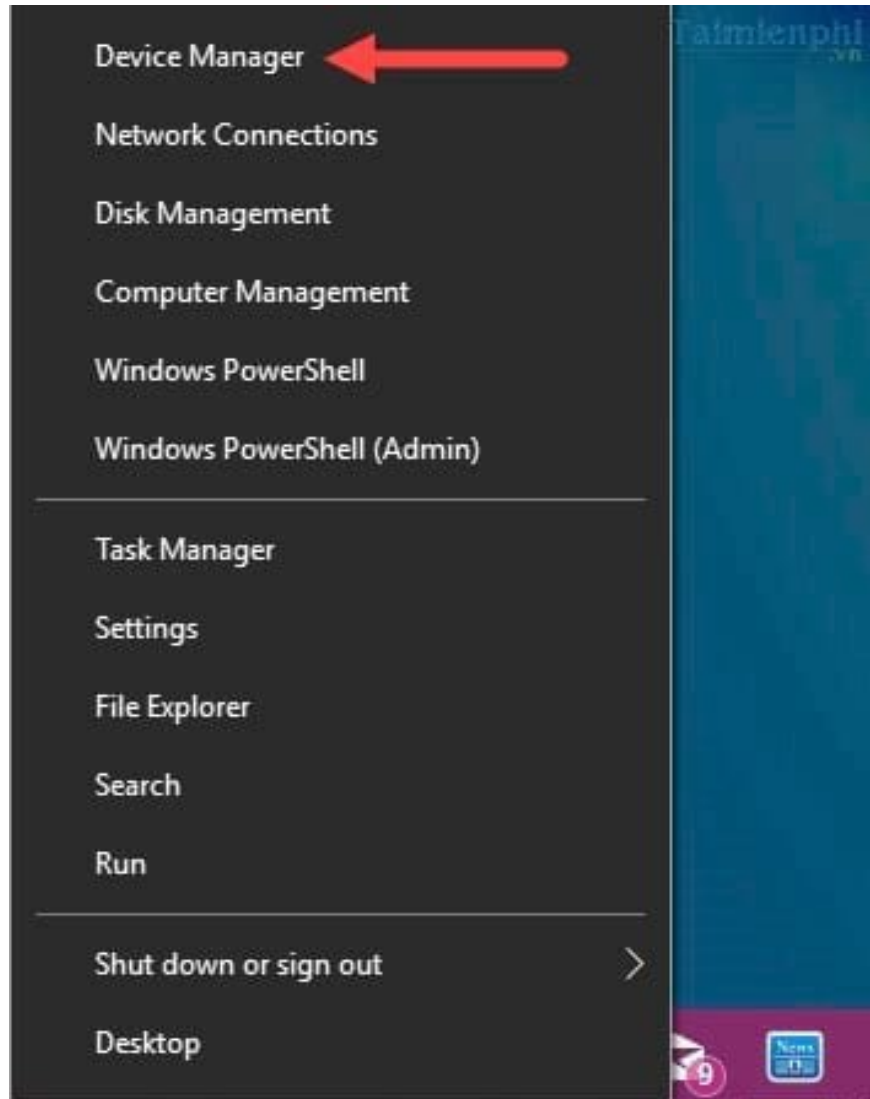


Step 3: Next, type the command "ipconfig /renew" to get a new IP address from the system. It's possible that your Windows 10 network error is due to an IP address conflict, so this method usually resolves the issue.

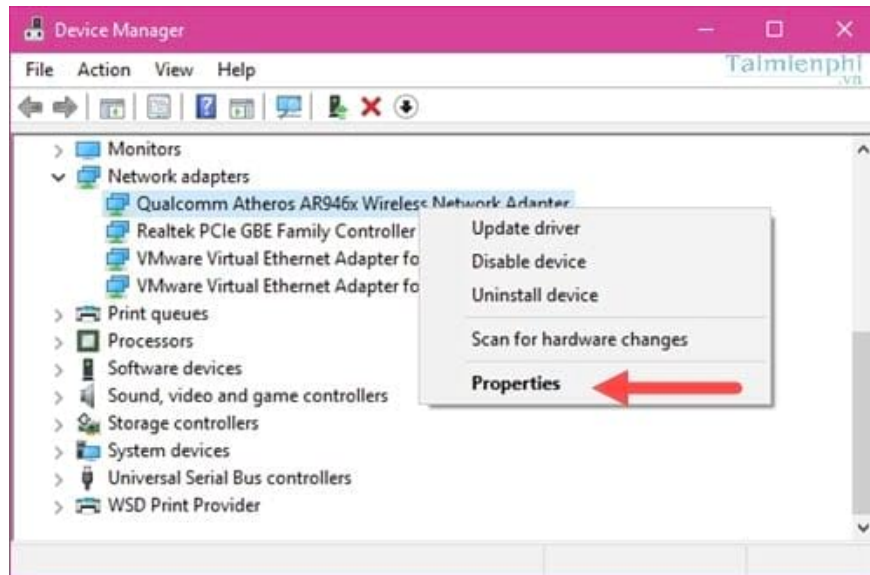


Turn off power saving mode when using WiFi.

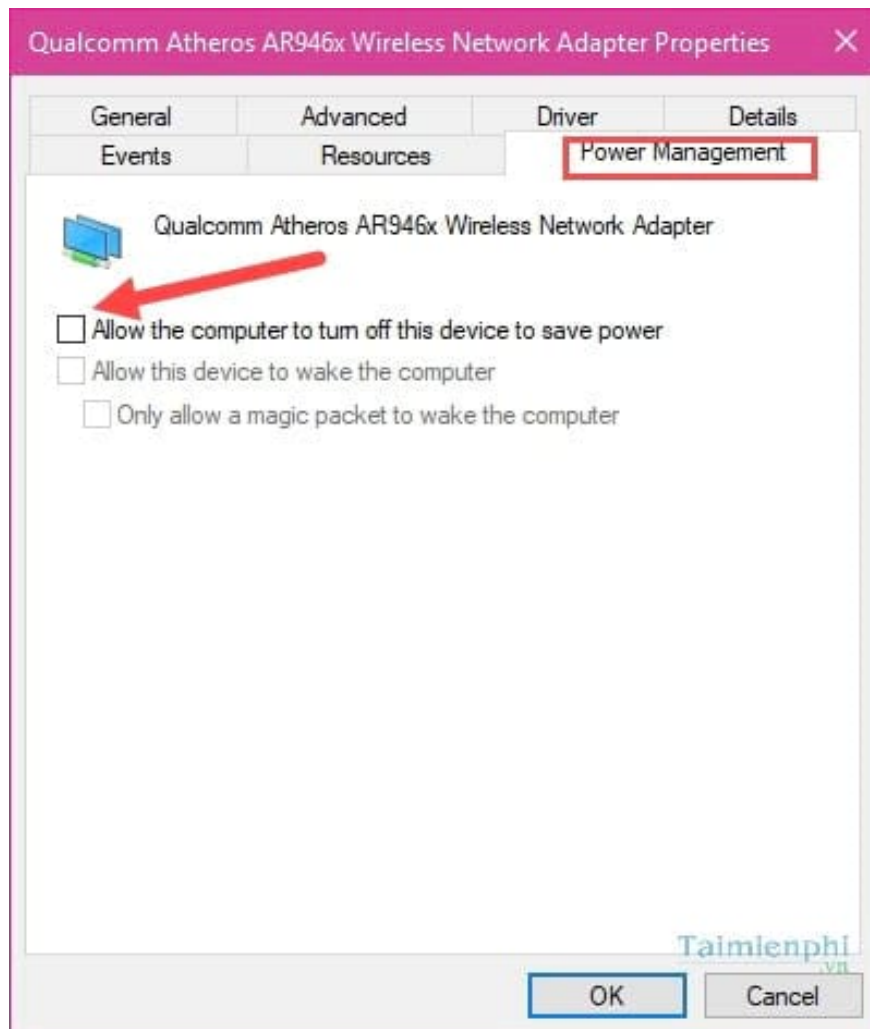
Step 1: TipsMake has mentioned this many times in previous articles; this is a very effective way to fix the network limitation error on Windows 10. To do this, simply open the Power Menu (as mentioned in the steps above) and select Device Manager.



Step 2: Then access **Network Adapter > Qualcomm Atheros** and click **Properties** .



Step 3 : In the Power Management section, uncheck the box next to "Allow the computer to turn off this device to save power."



Reset all network settings.

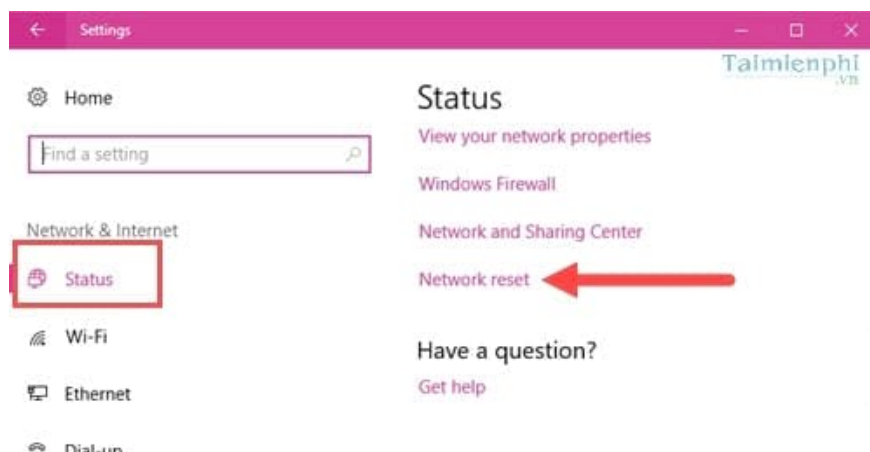
Step 1: Open the **Start Menu** and select **Settings** .



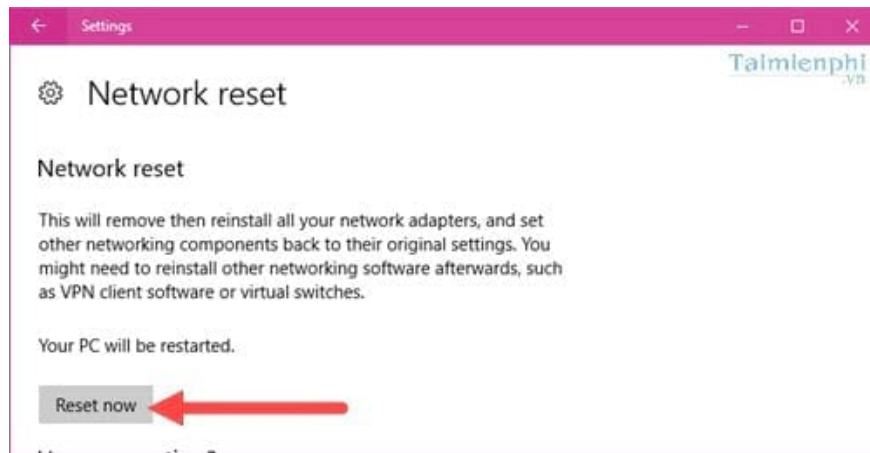
Step 2: Access the **Network & Internet** section to reset your network.



Step 3: In the **Status** tab , click on **Network reset** .



Step 4: Click on **Reset now** to start the setup from scratch.



With the methods TipsMake has just presented to you for fixing the limited network error on Windows 10, hopefully you will find the simplest and most effective method for yourself, and try not to have to use the last resort which involves resetting all network settings. If you have any other network or Windows 10 internet issues not listed above, please leave a comment below the article, and we will answer you as soon as possible.

You finished reading the article "**How to fix the 'Limited or No Network' error on Windows 10**" edited by the [TipsMake](#) team. We hope this article has provided you with many useful tech tips and tricks. You can search for similar articles on tips and guides. Thank you for reading and for following us regularly.