

# How to fix Laptop touch mouse error can't move

Touchpad laptop, also known as Touchpad, is a smart feature built into laptops, a lifesaving solution for users in case they forget to bring an external mouse.

However, if the laptop mouse cannot move, what will be the solution? Don't worry, the most useful causes and solutions will be sent to you through the information in the article below.

## The reasons why the laptop touchpad cannot move

Touchpad (touchpad) is known as a pointing device with tactile sensors. This technology has been researched and developed by scientists based on capacitive touch technology. When the electronic device senses the touch of a human finger, electric current from the fingers is transmitted to the surface of the Touchpad through the touch screen.

Although today, the use of external mice for laptops is being used more, but still cannot replace the Touchpad, especially in case you forget to bring a mouse. Therefore, when you see that the laptop mouse cannot move, to detect if your computer is experiencing one of the following errors:

### Mouse touch is accidentally disabled

This is the first case you need to check if the laptop touchpad cannot move. When you are using the laptop mouse in a very smooth way but suddenly can't use it anymore, it is possible that while using or operating on the computer, the user has accidentally pressed certain key combinations that lead to the locked computer's touchpad.

### Missing drivers

The laptop touchpad has a similar way of working with other computer touchpads. Therefore, Touchpad has its own driver system for the laptop's system to recognize, if the lack of Touchpad's own driver is also a cause for the laptop's touchpad mouse not moving. The lack of drivers can come from the following reasons:

During use, users have attached another removable mouse, leading to driver conflict. Therefore, the Touchpad driver will not be able to work.

Some other cases may be caused by when you update Windows 10 for your laptop, but the Touchpad Driver you are using is old, unable to adapt to this new operating system, which is also the cause of the laptop touchpad not moving. transferable.

### Loose cables

This is a case that very few users pay attention to. If the cable between the laptop mouse and the main board is broken or loose, it will also lead to the laptop touchpad not being able to move.

## Laptop touchpad is broken

If you check the above cases but all are not due to those reasons, then you should think that your Touchpad is completely broken. This phenomenon can occur when you have a strong impact or accidentally pour water on it.

The above are the most common causes if the laptop touchpad cannot move. In addition, it can also be caused by: conflict with other drivers of the removable mouse, main error . Please check your laptop to see what problems you are having.

## Fix laptop touchpad mouse not moving

Have you checked your laptop and discovered that the laptop touchpad cannot move is due to one of the reasons above? Then surely you cannot ignore the most effective solutions for each of the following cases:

### Re-enable the touchpad by pressing the Fn . key

There have been many cases when users want to adjust the volume on the laptop but accidentally press the Fn key, resulting in the touchpad being disabled. If you encounter this situation, hold down the Fn button and then press the F keys (function keys) on the keyboard, this problem will be solved immediately.



## Update the touchpad driver

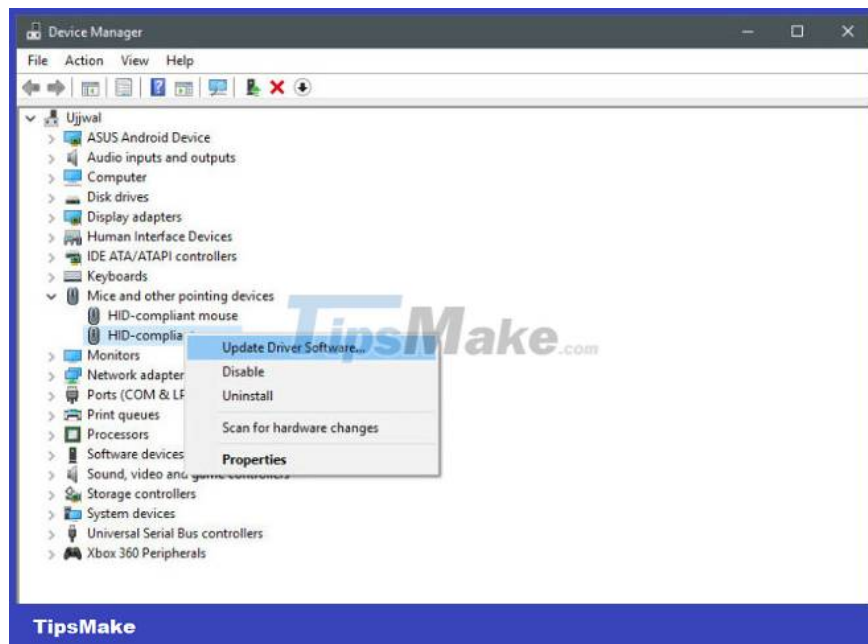
Updating the touchpad driver is a method for you to fix the Touchpad Driver that is too old or incompatible with the new operating system. The steps to do this are as follows:

Step 1: Find the 'Search' icon on your computer, type 'device manager' and select 'Device Manager'.

Step 2: In 'Device Manager', select the device you need to update and right click on the Touchpad you want to update select 'Properties'.

Step 3: Click 'Update Driver'.

Step 4: Select 'Search automatically for drivers' and wait for the computer to finish updating, then click 'Close' to finish updating the Touchpad Driver.



## **Remove the case and reattach the cable to the motherboard**

If your computer is slow to move, you need to check the cable connection to the mainboard. To perform this check, you need the support of a professional to be able to remove and reattach the cable for you in the most secure way without affecting other functions of the computer.

## **Driver error of laptop touch mouse**

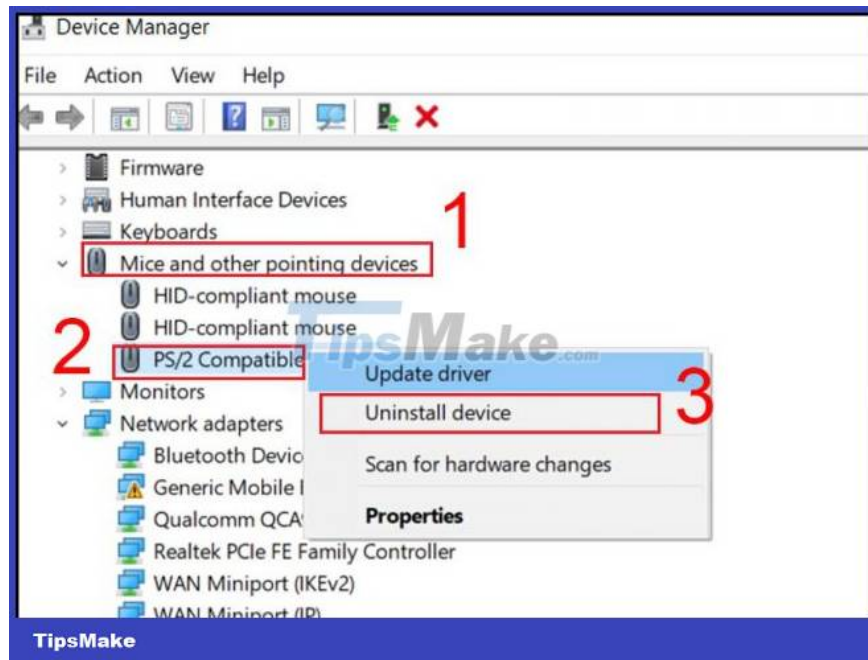
If you've been using your laptop for a long time, plugged a lot of mice into your laptop and forgot to remove them. It is this that causes the drivers to conflict with your Touchpad.

Here is the workaround for this behavior:

Step 1: Go to 'Device Manager', click the arrow next to it and select 'Mice and other pointing devices'.

Step 2: Proceed to remove the mouse until your Touchpad works again.

In case you have updated the Driver and reattached the cable, . but that doesn't work, the touchpad may be damaged. The only solution to overcome this situation is to replace the laptop touchpad.



## How to replace laptop touchpad

If you've tried all of the above methods but your mouse's condition still doesn't improve, it's imperative that you replace the touchpad for your laptop. This you should not handle at home yourself because if you perform these operations yourself without knowing the steps, it is possible to damage and short the motherboard for your computer. Then you may have to repair other parts, making the cost much higher.

So the safest and best measure for you is to bring it to a reputable repair center to replace or repair. If your laptop is still in the warranty period, you can also bring it to the facility where you bought the laptop to check the computer's condition and offer the best solution.

The above are common causes and ways to fix them for each specific case when you encounter a laptop mouse that cannot move. Hopefully the information above will help you so that you can have the best experience on your computer.

If in the case that the laptop mouse cannot move permanently or is uncomfortable to use, you can consider using a separate mouse. You can refer to the mouse lines on the Website or contact the consultant on the Fanpage to choose.

You finished reading the article "**How to fix Laptop touch mouse error can't move**" edited by the [TipsMake](#) team. We hope this article has provided you with many useful tech tips and tricks. You can search for similar articles on tips and guides. Thank you for reading and for following us regularly.