

How to fix Laptop catch weak Wifi

In the process of using Laptop devices also arise many different problems affecting the Laptop's Wifi connection. In this article, Software Tips will guide you on how to fix weak Laptop catch Wifi errors.

Today on Laptop devices are equipped with Wifi Module to support users to use wireless network conveniently and simply. Laptop devices are capable of very stable Wi-Fi connection and have very high speed. However, in the process of using Laptop devices also arise many different problems affecting the Laptop's Wifi connection. In this article, Software Tips will guide you on how to fix weak Laptop catch Wifi errors.



1. Adjust the beard of the Modem / Router

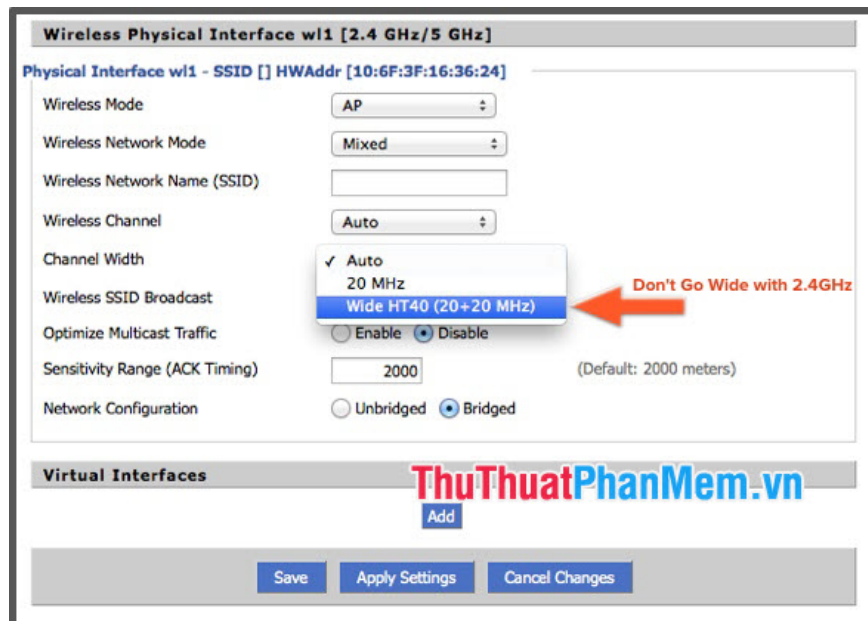
As you know, there are broadcast antennas on Router / Modem devices. Those whiskers will directly affect the device's ability to connect to WiFi. Currently, Modems equipped with 2 or more antennae provide very high and effective coverage. But you can improve this even further, and you can adjust the direction of the Router / Modem beard in a flag pattern. With this type of waving flag, your Modem will transmit and cover a much stronger and much stronger than having the two antennae in the same direction and straight. This tip is due to Alf Watt - a famous Apple engineer who manages and works in the Wifi array of iPhone, iPad, Macbook devices, .



Think Perpendicular For Antenna Placement

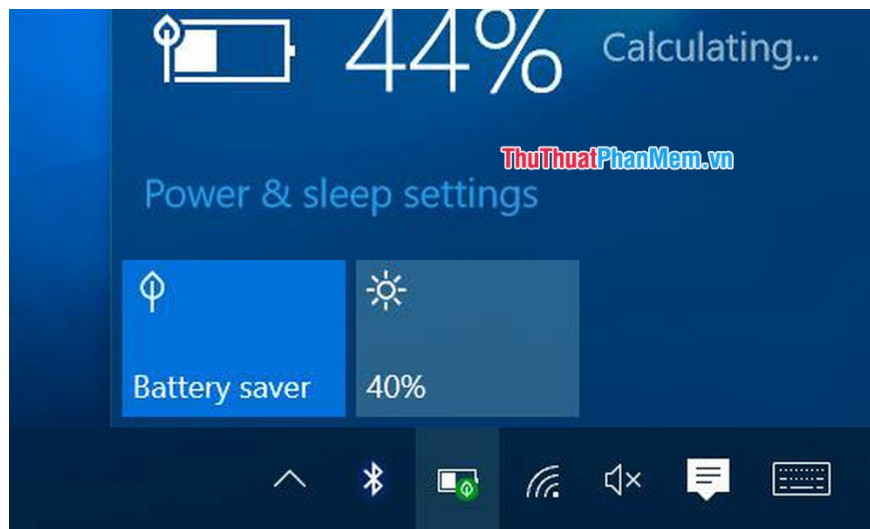
2. Adjust the Wide 40MHz channel on the 2.4GHz band

Most routers on the market now support Wide channel on the 2.4GHz band. However, the problem is that this level of bandwidth will often be interference and disruptive if there are multiple access devices. Especially Bluetooth devices also use this frequency band, so interference will be constantly occurring and unavoidable. But if you use the 5GHz band, the 40MHz channel is very effective. So, you should consider when setting up your Router to bring the best efficiency and keep the Laptop from weak Wifi connection.



3. Turn off Battery saving mode on Laptop

Battery saving mode on Laptop will limit the energy for devices to save battery efficiency. And the components that connect to Wifi are no exception. Because of that, when you start the battery saver mode, you will see your device catches weaker Wi-Fi signal. Instead, we can both charge and use it to have a stronger and more stable Wifi connection. This is a simple but very effective and popular way.



4. Select a location for the Laptop

This may sound vague and ineffective, but it is extremely effective. Please leave the Laptop away from the concrete wall calculated on the broadcast line from the Router to your Laptop. Concrete walls will reduce the ability of devices to transmit Wifi band. Being away from the walls helps them to have a stable transmission and the signal doesn't get worse. Please choose the location of the Modem away from the concrete walls to have a strong transmitter. This way will fix the problem Laptop catch weak Wifi very effectively.



5. Use a separate Wifi Card

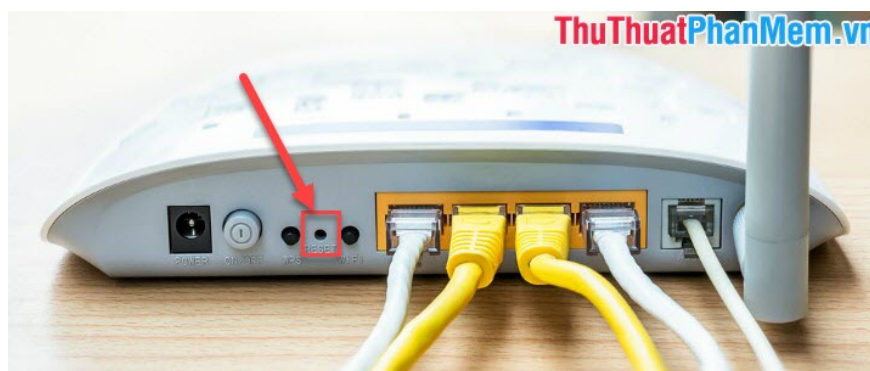
Laptop devices are mainly about compact design so the components will be optimized as small as possible. Because of that, it affects the connectivity and limitations of the connection. Currently, Laptops have a built-in Wifi module, but it is only effective in the case of near routers. To improve connectivity, you can use support devices such as: USB Wifi. This is one compact device that is extremely efficient. Some good USB Wifi models you can use such as: TP-Link TL-WN822N - USB Wifi, TP-Link TL-WN722N, TotoLink N150UA, Xiaomi

Nano Wifi USB Transceiver, USB Totolink N150UA USB, Mercury Wifi USB, . The above Wifi Card devices are new products and support the new connection technology of 802.11b / a standard so you will have a very good experience.



6. Restart the router broadcast device

If talking about simplicity, this is the simplest way. You just need to restart your Wifi router so that they delete old data and reset from the beginning to create a new and more effective connection environment. Modems now also support auto-restart and disconnect wifi connections that are no longer used to create new drum kits for subsequent devices. Look for this in the router's manual or the manufacturer's homepage.



7. Turn off the Router when not in use

Turning off routers when not in use will give them time to lower the temperature and cool down internal components. Manufacturers all design electronic components to slow down when the temperature limit is reached. Turning off Wifi Router will help components have time to rest and lower temperature for more stable operation. When the router has a more stable connection, your Laptop devices will receive much more stable and stronger signal.



8. Change Wifi password

Changing the Wifi password will help your network from being "stolen" by other people. Having multiple devices connected to a router broadcast device will reduce their ability to transmit data and connect greatly. To get a stable connection, please restrict strangers to access your Wifi to ensure the best connection possible.

9. Using more modern broadcasting equipment

Currently, the router equipment comes from the network are all cheap and of poor quality. You can invest in other more modern devices that have more antennae, higher bandwidth. Currently, the price of routers is also very cheap and easy to install and use. With 3-Wifi routers only about 300-400k and devices with 4-5 antennae broadcast around 500k. This is an extremely reasonable and effective investment. Choose devices with a lot of beard because they help better Wifi coverage.



10. Use a device that enables Wifi (Repeater wifi)

This is a compact and effective product. You only need to connect to the power outlet to maintain the power for the product. In addition, there is no need to use the network cable or connection cord at all. The device will automatically receive Wifi waves and click them to increase coverage. In a multi-storey building, you can use the main router transmitter on the first floor and the devices installed on each floor can cover the entire building. Thus, your Laptop will receive very stable signal.



In this article, Software Tips have instructed you on How to fix Laptop catch Wifi weak quickly and most effectively. Good luck!.

You finished reading the article "**How to fix Laptop catch weak Wifi**" edited by the [TipsMake](#) team. We hope this article has provided you with many useful tech tips and tricks. You can search for similar articles on tips and guides. Thank you for reading and for following us regularly.