

# How to fix Laptop automatically disconnecting Wi-Fi?

How to fix Laptop that keeps disconnecting from WiFi? The WiFi signal on the computer is intermittent, how to handle it when it is lost?

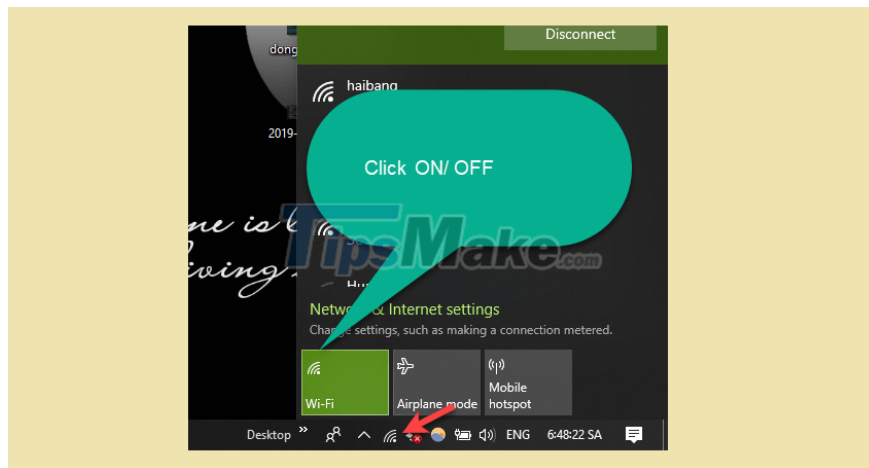
In the process of using a Windows computer, there are many of you who encounter the error that the computer is constantly disconnected from Wi-Fi. So what is the main cause here?

Yes ! The causes are many, it may be after you Sleep the computer, or it may be that you are using it, and it is suddenly disconnected.

So how to completely overcome the above situation? Okay, in this article I will share with you a few tips to quickly fix this situation, please pay attention to know how to handle it!

## 1. Reconnect to the Wi-Fi network

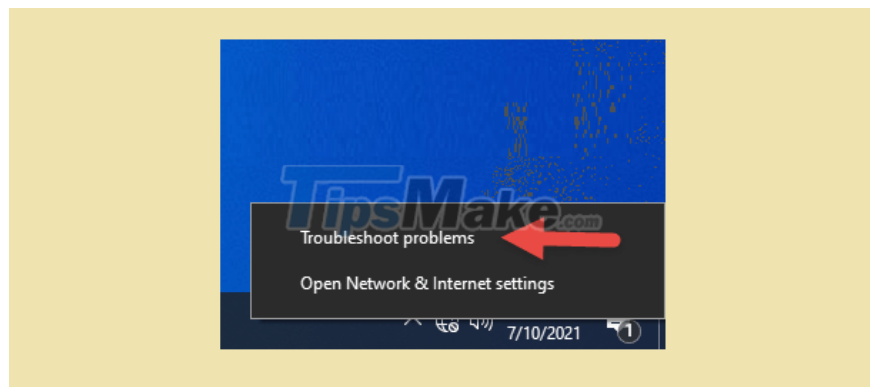
This is the simplest way, but if the Wi-Fi continues to disconnect, then move on to the second method.

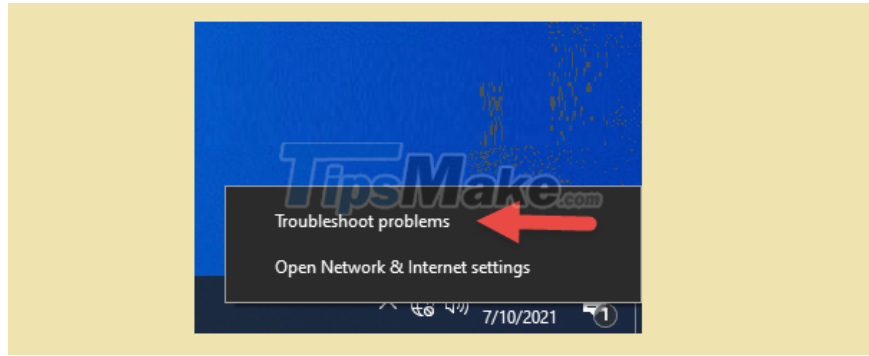




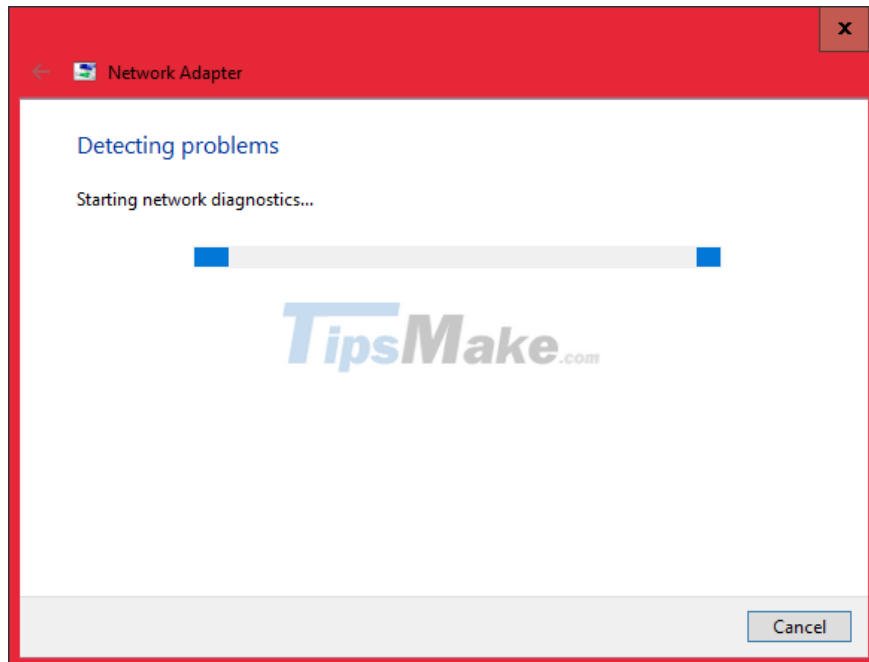
## 2. Use the Network Troubleshooter

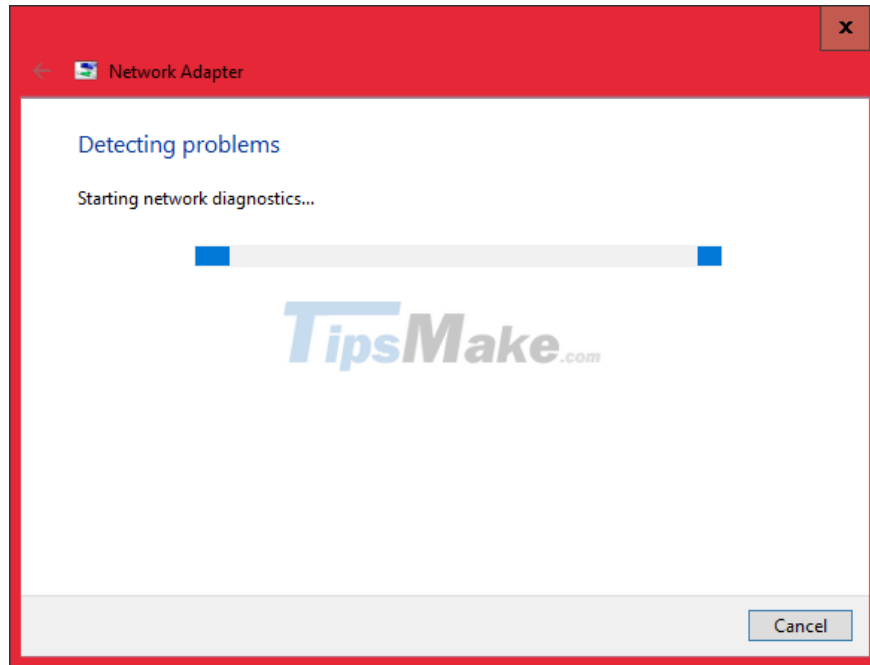
To use the network troubleshooting tool available on Windows, how to use it is extremely simple, you just need to right-click on the Wi-Fi icon => and click Troubleshoot problems





Then you follow the instructions for the program to fix the error. This process happens automatically so you don't need to do anything else.



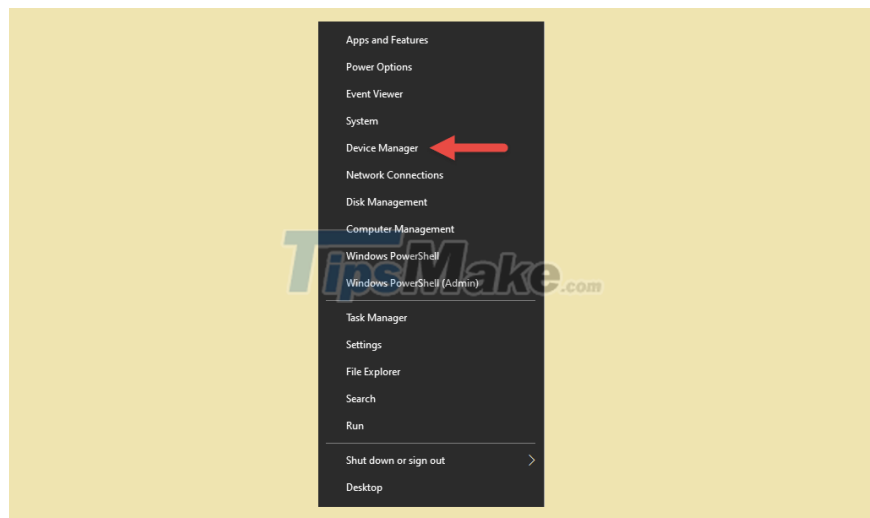


If the automatic disconnection of WiFi still occurs, please use the next method.

### 3. Uninstall Network Driver

Note: Please download the Network Card Driver before removing it (see instructions on downloading genuine drivers by computer manufacturer). Or download 3DP NET software (applies to all Windows computers).

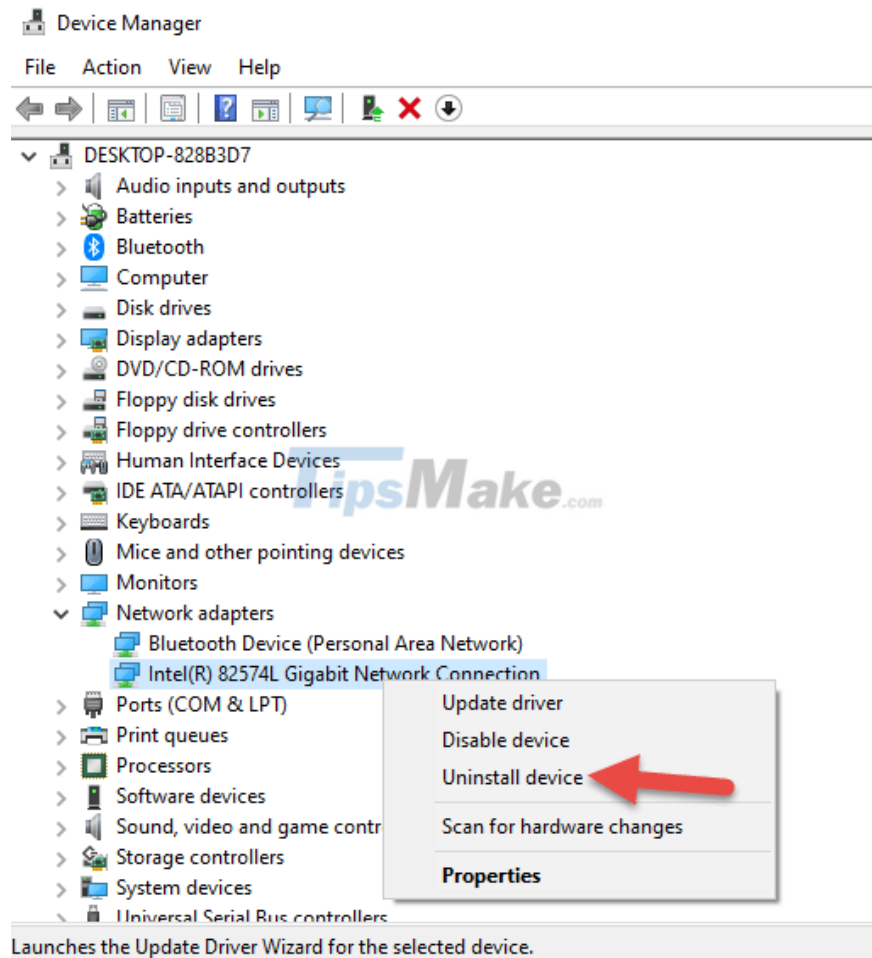
Do: First press Windows + X => then click Device Manager (if it's Windows 10 or Windows 11.)



Picture 8 of How to fix Laptop automatically disconnecting Wi-Fi?

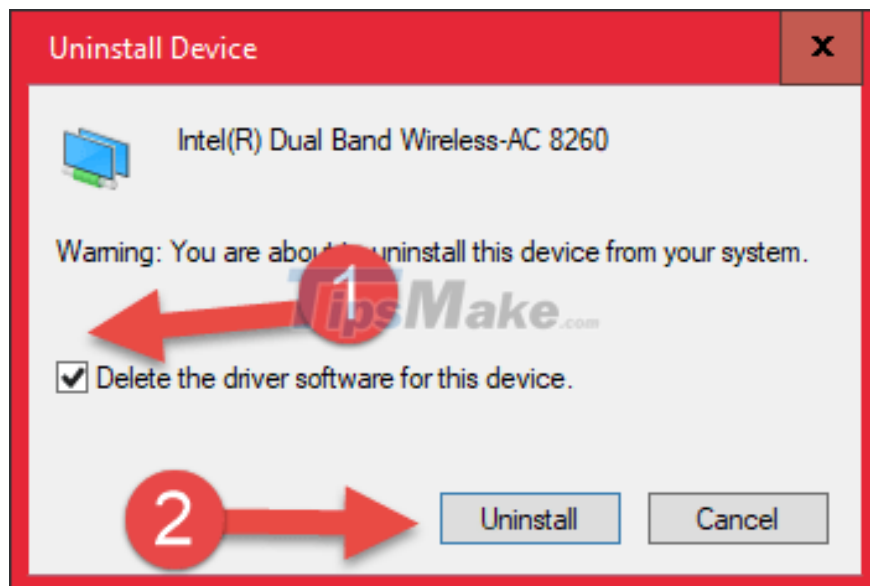
Or you can access Device Manager by the following way (applies to all versions of Windows): Press Windows + R to open the Run dialog => then enter the command devmgmt.msc => and press Enter.

Implementation: Next we find the network card => then right-click and click Uninstall.



Picture 10 of How to fix Laptop automatically disconnecting Wi-Fi?

Next, tick Delete the driver software for this device => and click Uninstall.



Picture 12 of How to fix Laptop automatically disconnecting Wi-Fi?

Then you restart the computer, if the computer receives the network, there is no need to install any more drivers. And in case if the computer does not receive the network, please install the driver file that you have prepared.

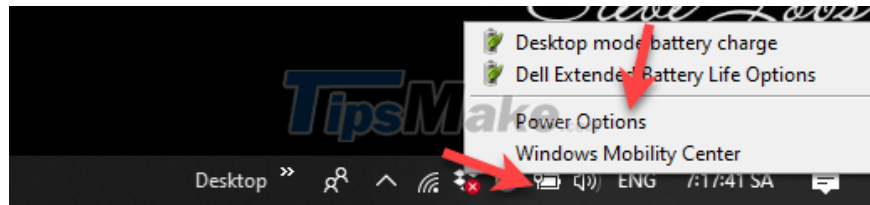
#### 4. Re-edit Power Options

Implementation: If it is Windows 10, press the Windows + X combination => then select Power Options



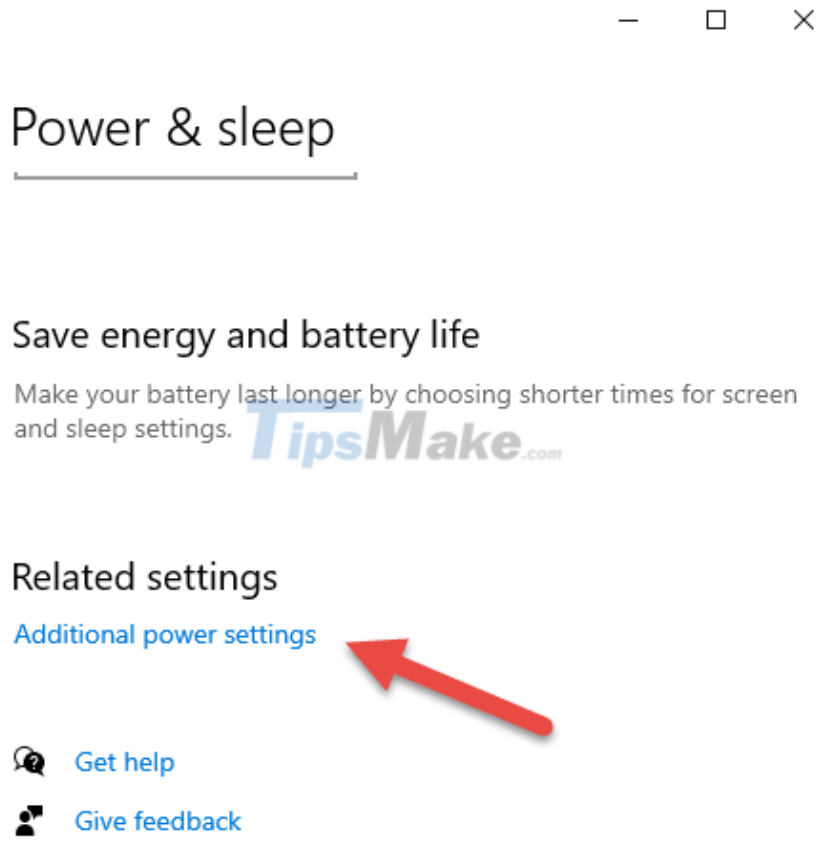
Picture 14 of How to fix Laptop automatically disconnecting Wi-Fi?

Or you can right-click on the PIN icon on the Taskbar => and select Power Options as shown below.



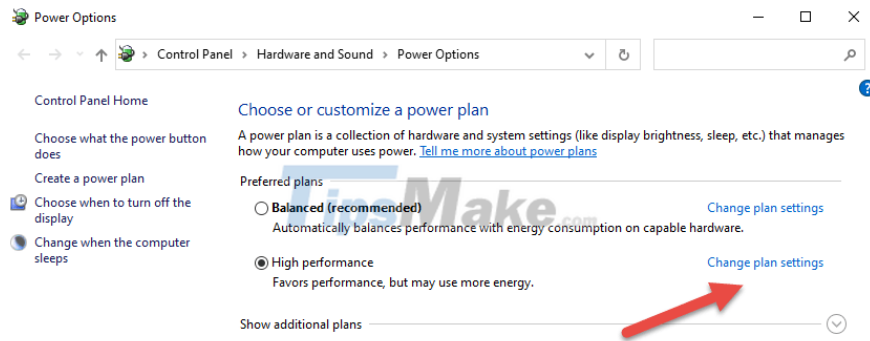
Picture 16 of How to fix Laptop automatically disconnecting Wi-Fi?

Next, click Additional power settings.



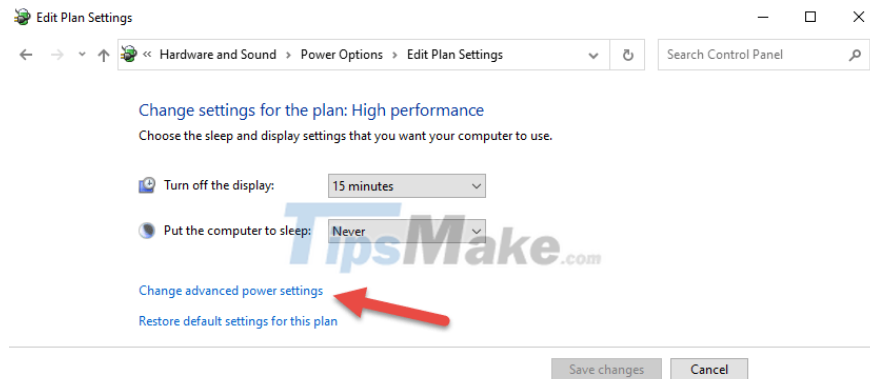
Picture 18 of How to fix Laptop automatically disconnecting Wi-Fi?

You click Change plan settings => then you choose the correct Power you are using.



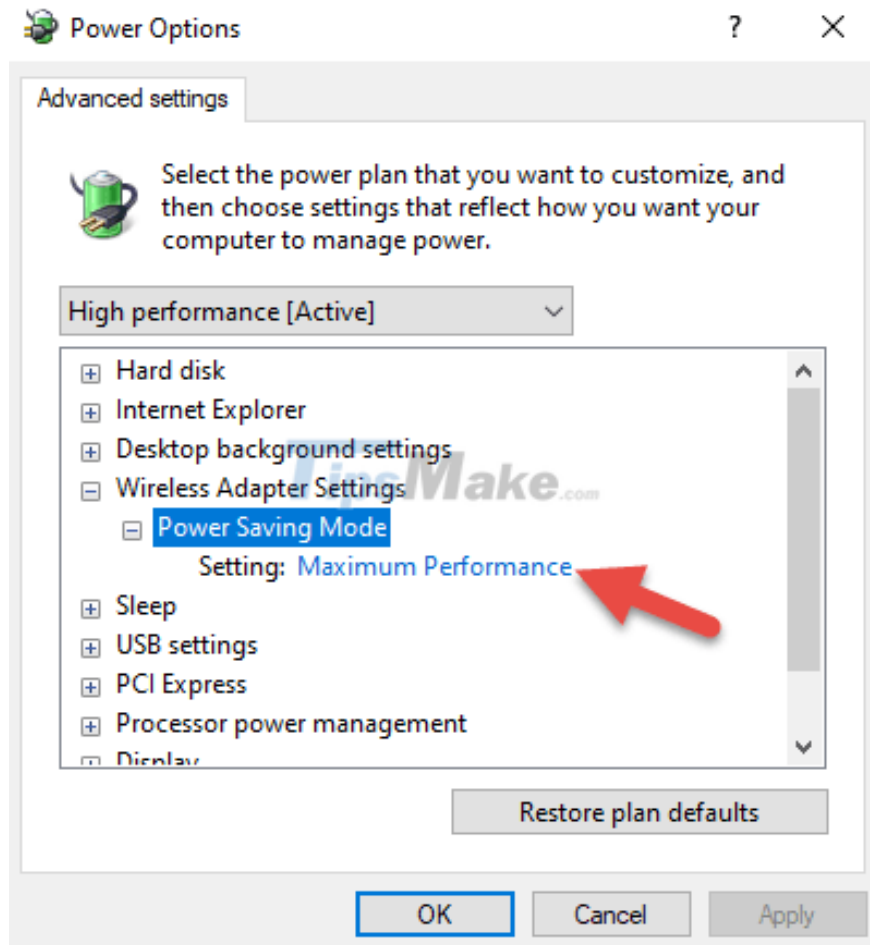
Picture 20 of How to fix Laptop automatically disconnecting Wi-Fi?

Next, click Change advanced power settings.



Picture 22 of How to fix Laptop automatically disconnecting Wi-Fi?

Then you find the Wireless Adapter Settings => then click to open the Power Settings Mode section, and set it to Maximum Performance => Finally you click OK to finish.



Picture 24 of How to fix Laptop automatically disconnecting Wi-Fi?

## 5. Turn off anti-virus software

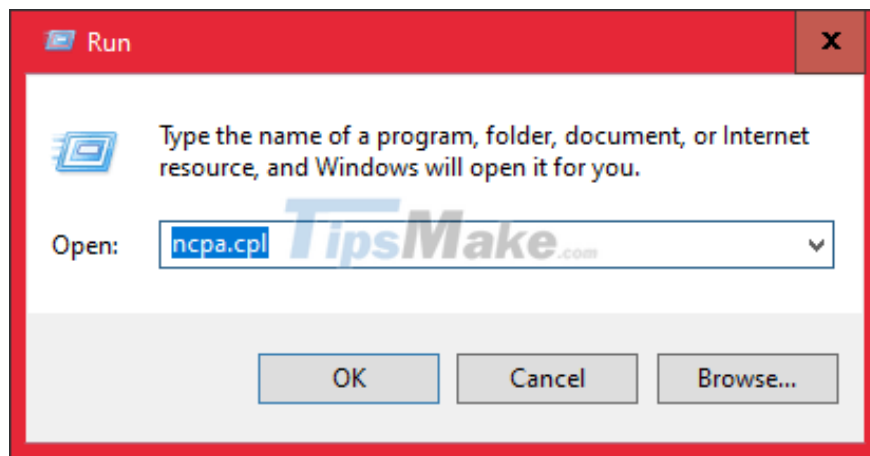
Sometimes the Wi-Fi disconnection error is caused by third-party antivirus software (Ignore this problem if you only use Windows Defender available on Windows) and interfere with the computer error.

In this case, try turning off the anti-virus software to see if the error is fixed or not, we do that exclusion.

If after exiting the anti-virus software but the WiFi network is ok, it means that the cause lies in the anti-virus software, otherwise it is caused by another cause.

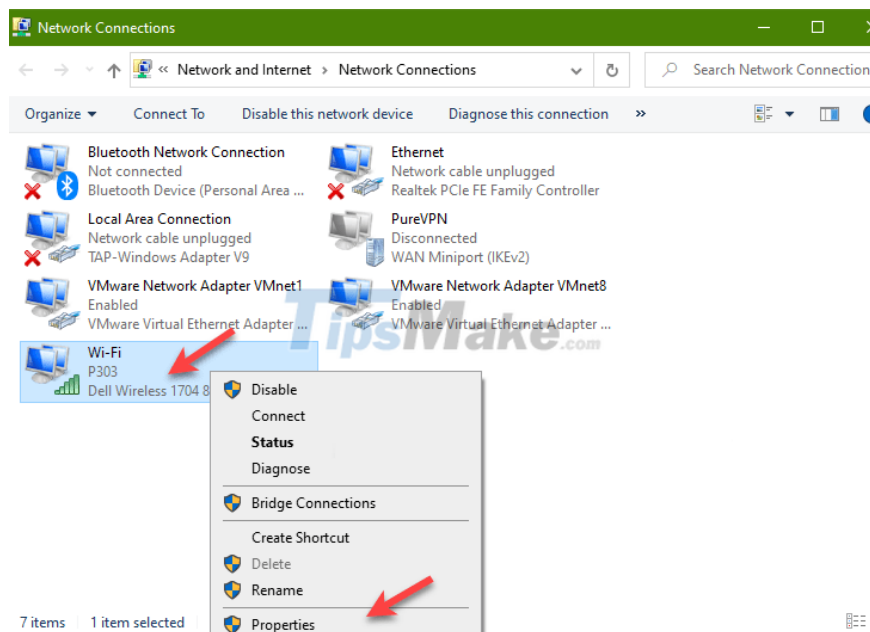
## 6. Turn off Roaming Sensitivity

Implementation: You press the Windows + R key combination to open the Run dialog box => then type ncpa.cpl => and press Enter.



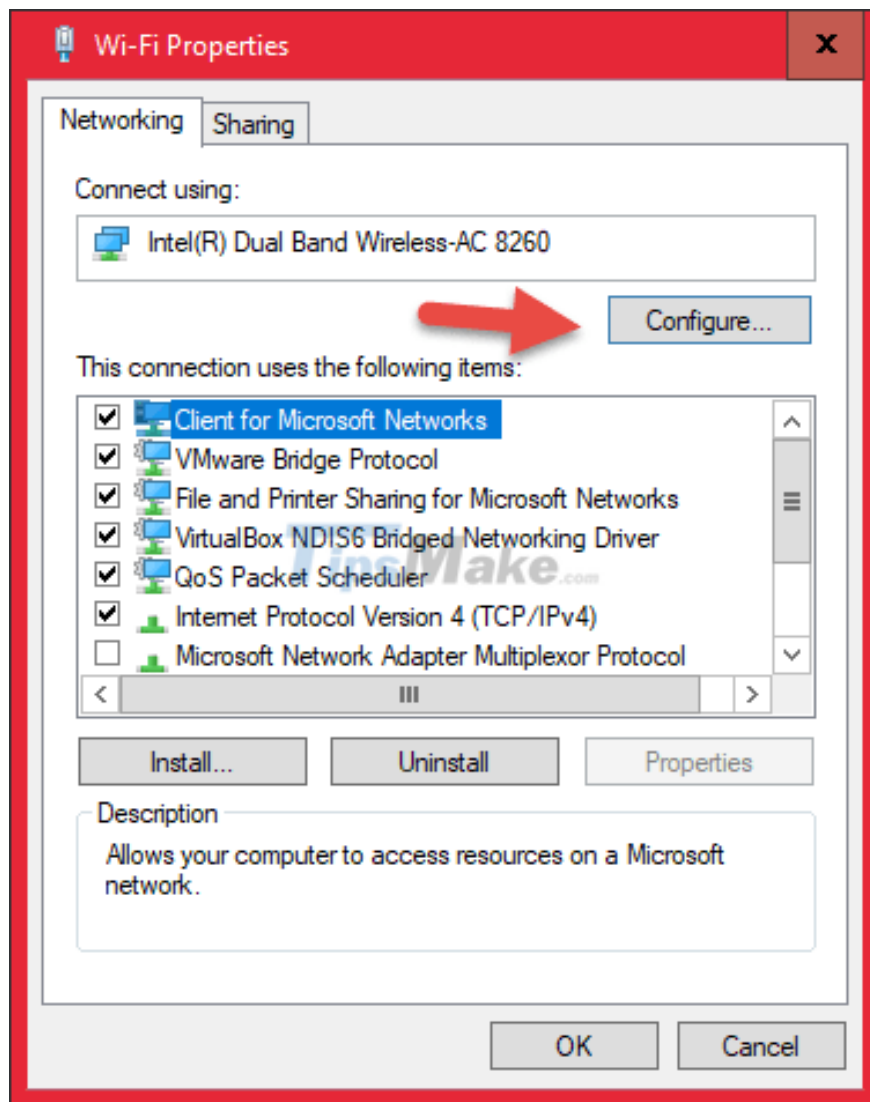
Picture 26 of How to fix Laptop automatically disconnecting Wi-Fi?

Next, find the network adapter you are using => then right-click and select Properties.



Picture 28 of How to fix Laptop automatically disconnecting Wi-Fi?

Next you click Configure.



Picture 30 of How to fix Laptop automatically disconnecting Wi-Fi?

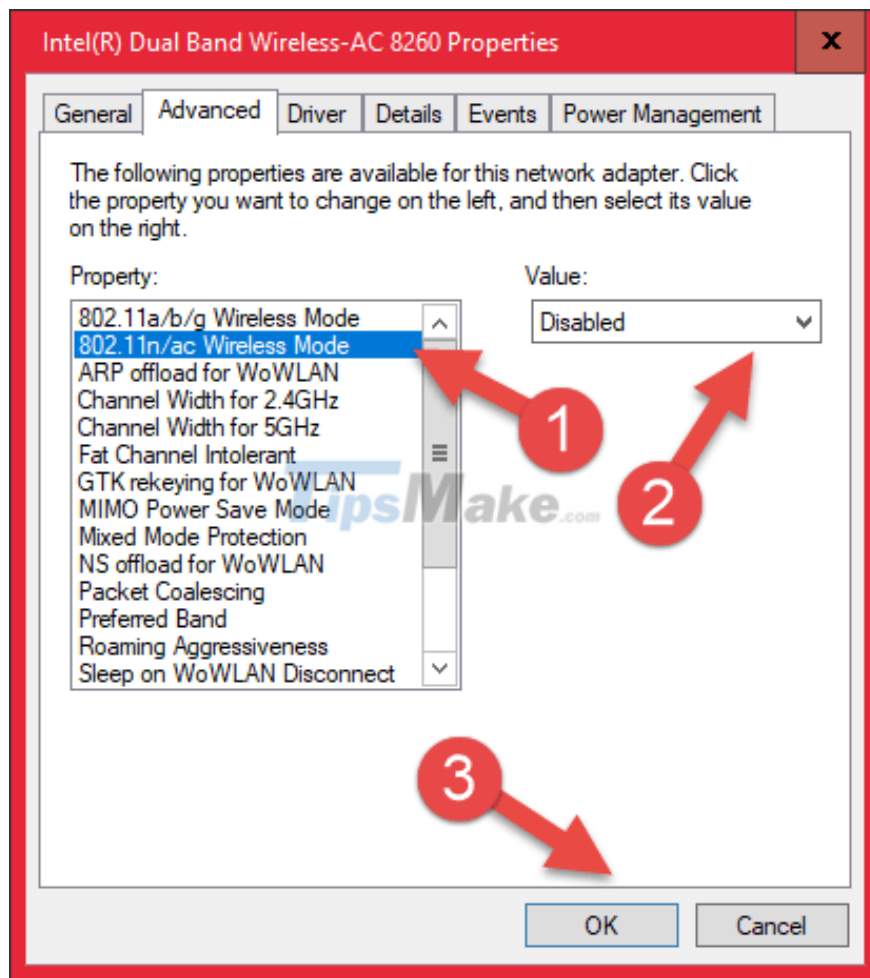
Then, click on the Advanced tab => and navigate to the Roaming Sensitivity section => switch it to Disabled state => Finally click OK to finish.

Note: If your network card does not have Roaming Sensitivity, you can skip this method.

## 7. Disable 802.11n

802.11n is a new standard of wireless networking. So, for some old Routers (WiFi transmitters) do not support this standard and cause disconnection errors. To fix this we will disable 802.11n support on your network card.

The steps you do are the same as part 6 above. However, in the Advanced section, find the 802.11n / ac Wireless Mode section and set it to Disable => finally click OK to finish.



Picture 32 of How to fix Laptop automatically disconnecting Wi-Fi?

You should also disable U-ASPDsupport and IEEE 802.1X authentication. Try this and try restarting the computer. If the Wi-Fi disconnection still occurs, please set the parameters back to the way they were. Because the cause is not because of it!

## 8. Change the channel of Router, Access Point...

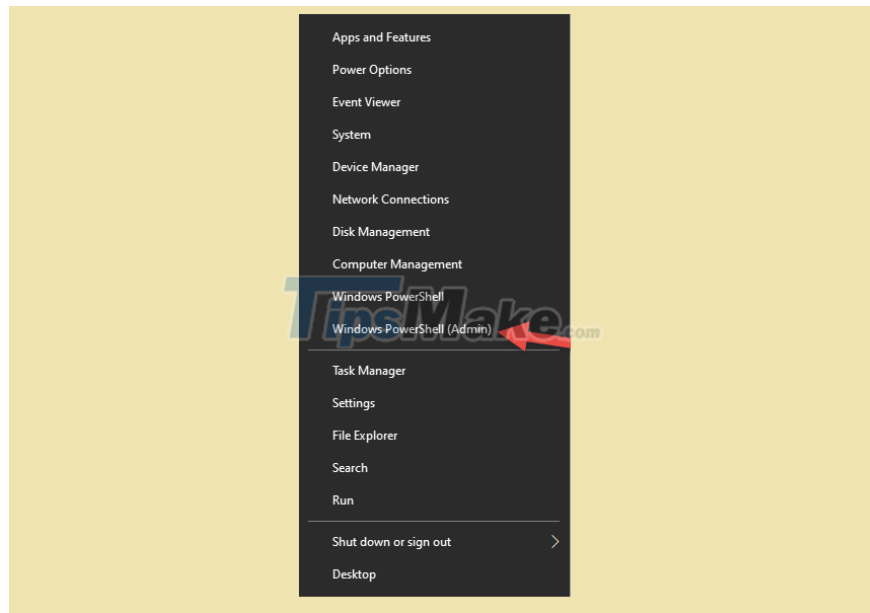
You can switch the Router to another channel to fix this. Each router has its own channel. If your home has many routers sharing the same channel, the possibility of errors and interference is very high.

From there, your Wi-Fi must connect to other wireless networks on the same channel.

To fix this, go to the router's configuration page to change the channel for the router. If you don't know how to do it, you can ask a network operator to help you.

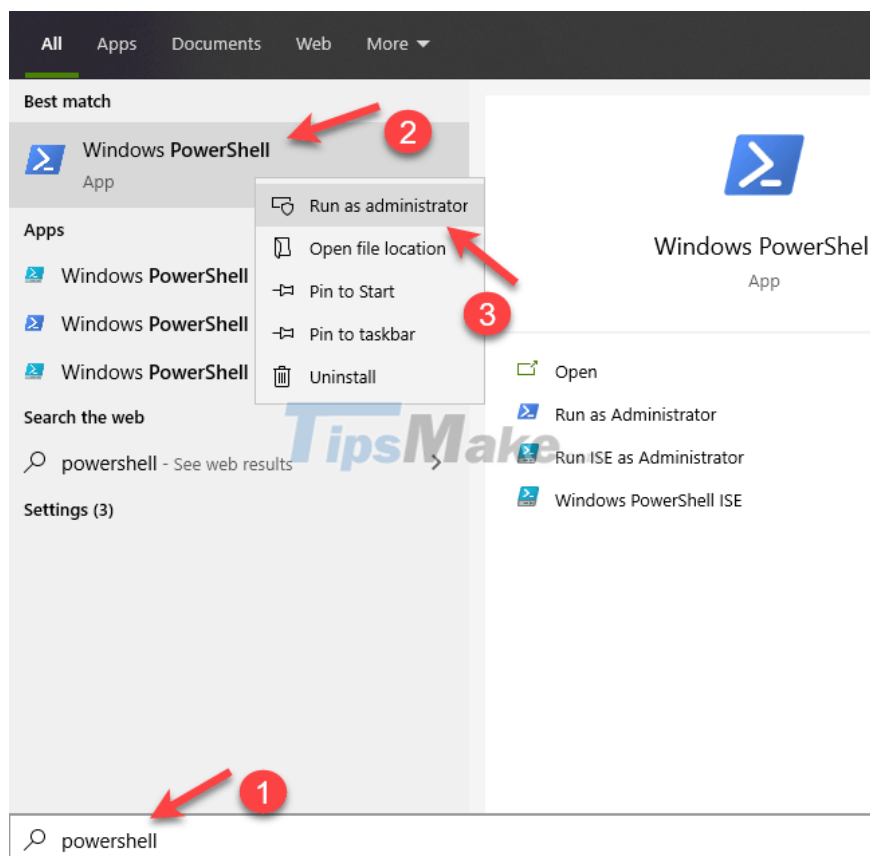
## 9. Blocking computer connections to different networks (for those of you with command line knowledge)

First, press the Windows + X key combination => then select Windows PowerShell (Admin).



Or you can open Windows PowerShell with admin rights by:

Implementation: Press the Windows + S combination to open Windows Search => search with the keyword powershell => and right-click Windows PowerShell in the results that appear => and select Run as administrator.



Next, enter the following command:

```
netsh wlan add filter permission=block ssid= %Name of your Wi-Fi network%  
networktype=infrastructure
```

%Name of your Wi-Fi% is the name of the network for which you want to block the connection. For example, if I wanted to block a Wi-Fi network named tipsmake, I would use the following command:

```
netsh wlan add filter permission=block ssid= tipsmake networktype=infrastructure
```

Finally press Enter to launch the command. You just use this command to block all networks that you are near and can connect to. From there the Wi-Fi will not be disconnected anymore.

## 10. Conclusion

Ok, so I've just finished showing you how to fix the error that the laptop is constantly disconnected from Wi-Fi. Good luck to all of you, Thank you for taking the time to read this whole post!

You finished reading the article "**How to fix Laptop automatically disconnecting Wi-Fi?**" edited by the [TipsMake](#) team. We hope this article has provided you with many useful tech tips and tricks. You can search for similar articles on tips and guides. Thank you for reading and for following us regularly.