

# How to fix keyboard errors

The design has a movable joint that makes the phone slide and fold less durable than a bar phone. But this does not mean that simple bar phones are hard to break down. Typically, the problem is related to the phone's keyboard in general.

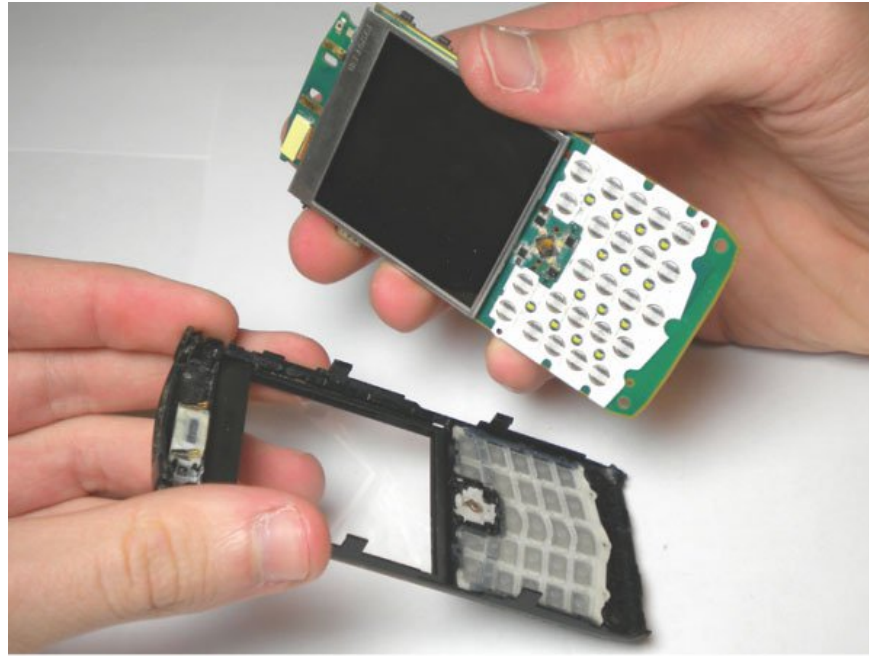
The design has a movable joint that makes the phone slide and fold less durable than a bar phone. But this does not mean that simple bar phones are hard to break down. Typically, the problem is related to the phone's keyboard in general.

Last time, we received many questions from readers related to the keyboard problem of the phone. The most common errors are less sensitive, one or more nodes are paralyzed, even if the entire key is not available. And most readers ask for answers and how to fix this problem.

Actually fixing keyboard errors is quite simple. But, as well as treating illness, must know the disease. If you want to troubleshoot the keyboard, at the very least, you need to specify what the damage is.

## Software error

You should know that like most errors that occur during phone use, keyboard errors can also arise from software, not just hardware errors. Software errors are also the easiest to solve, just format or re-run the software for the phone is fixable. This software error often arises in phones with operating system, complex data structure, may also be caused by virus attacks, causing errors in the keyboard management of the phone keyboard. Therefore, for any keyboard error, you should first back up the data and try format, rerun the software to see if the above error is fixed. If the above error still exists, you can proceed to diagnose the error in the hardware direction and find a suitable solution.



Keyboard layout is quite simple.

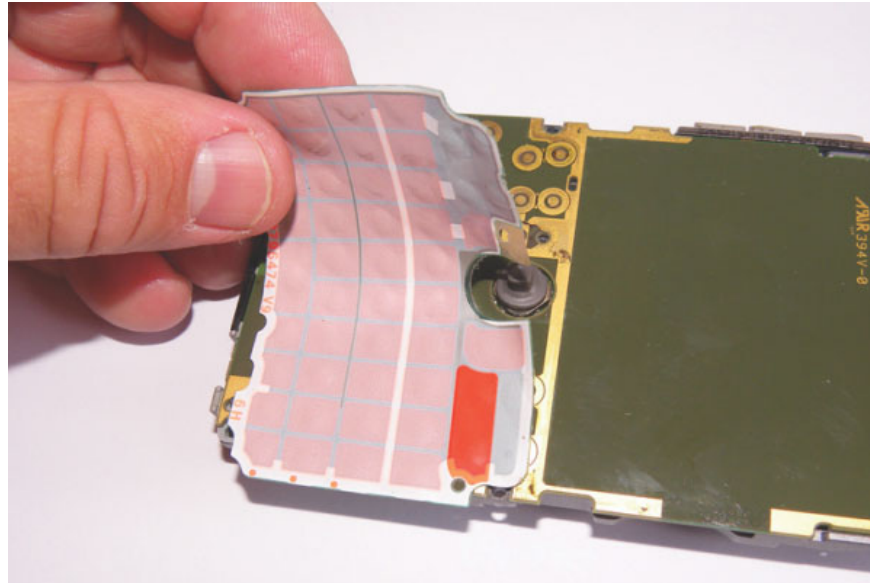
## **Hardware error: keystroke**

Just like a computer keyboard, the phone keypad includes three details: the key (the buttons you use to enter data); On-board key control chip and control software that e-CHP has just shown the solution above. And most keyboard errors come from the details of the key press.

The structure of the key is composed of two small details, the circuit and an elastic steel plate that acts as a circuit connection (can be considered a simple contactor, using external force).

Normally, the steel plate protrudes, not strongly connecting the bottom circuit. When you apply a sufficient force, the steel plate will deform, stick to the circuit, connect strongly, forming a control signal transmitted to the keyboard controller chip. And the most common keyboard error appears here: the steel plate cannot connect the circuit below.

Between the steel plate and the circuit is a space. The phone during use will generate heat. These two conditions make the circuit section and the surface of the steel plate coated with an oxidation layer, which becomes a good insulating layer. On the other hand, although the voltage and intensity are very low, there will still be a discharge phenomenon when the steel plate is pressed, close to the circuit below. This discharge also forms a very thin layer of soot on the surface, which also acts as an insulator as an oxidizer. Now, when the key is pressed, the circuit is not connected, the control chip does not receive the signal, so the phone does not understand your operation. Only when using a large force of pressure, can the new steel plate connect, causing the situation that the reader often describes as less sensitive, keystroke.



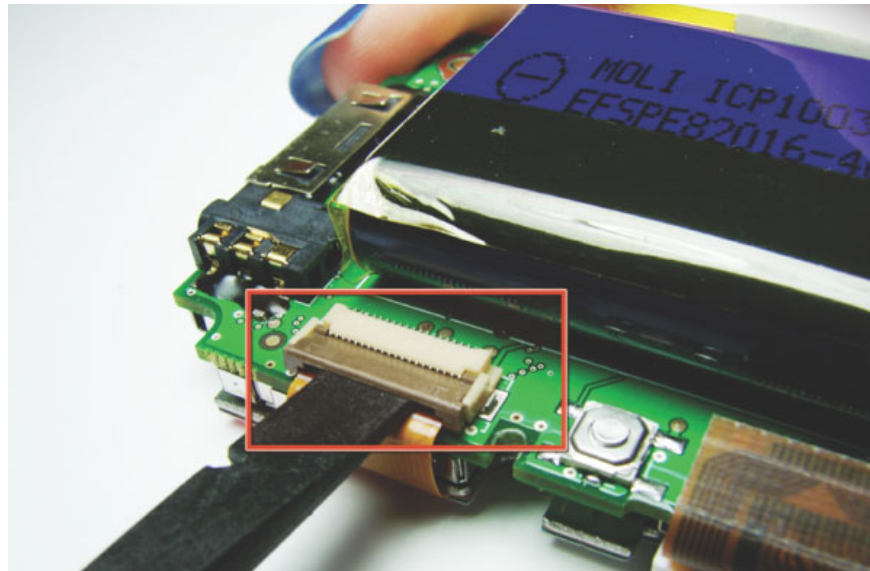
Clean the keyboard socket.

This situation can occur with a key, or even a few keys. The fix is very simple, but requires you to be careful in the operation. You need to remove the protective cover to reveal the key circuit. Use a thin piece of metal to remove the plastic layer to fix the steel plate on the keyboard circuit. You can easily see the surface of the steel plate, or the dark brown copper surface. Carefully use detergent to evaporate quickly such as gasoline, alcohol to clean the oxidation layer and soot. You can also use eraser / eraser (hard, blue or red type) to clean this insulation. After cleaning, you can use good quality duct tape to fix the steel plate as originally. Most of the keyboard's faulty errors are fixed in this way.

## **The whole sequence of keys cannot be used**

Another case of key paralysis, which is less sensitive is the fact that an adjacent key sequence cannot be used. For this error, the keyboard board has a problem, usually broken, unable to provide a signal for a whole range of keys. However, this error usually only arises in phones with separate keyboard circuits, connecting to the phone board via the socket. Accordingly, you can try to fix it by cleaning the socket section connecting the keyboard board and the main board of the phone. Hygienic and tried many times to see if the above error was fixed.

If you are sure that the socket has been thoroughly cleaned, connected well, but the error still exists, it is likely that your keyboard controller chip has a problem, a complicated hardware error, is difficult to overcome. with rudimentary tools as well as very high hardware requirements for repair. This error also has another manifestation that completely disables all phone buttons, cannot control the phone.



Separate the elastic steel from the keyboard circuit for cleaning.

## Error key

In addition to the keystroke, not sensitive, the key is also an error that many readers encounter. Contrary to the above incident, the keystroke caused the keyboard to always be activated, causing the phone to always receive that keypress signal even if you didn't press it. Sometimes this error appears in the form when you press any key and release it, a character, a certain feature will always be activated. With this error, the keyboard cleaning operation for keystroke is also effective, applicable.

As explained above, elastic steel plates work to connect circuits, creating a keyboard control signal. After a long time of use, it is possible that this steel plate loses its elasticity, creating a keystroke phenomenon (just touch the activated key) or press the key. To overcome this situation, the only way is to replace the new steel plate. Thankfully, almost all of this elastic steel sheet is standardized, has the same size, or at least can be found on the keyboard of the same brand phone. To replace the steel plate, you also proceed to peel off the fixed plastic part, then clean and place the new steel plate, fix it with clear tape. Error keys will be thoroughly overcome.

You finished reading the article "**How to fix keyboard errors**" edited by the [TipsMake](#) team. We hope this article has provided you with many useful tech tips and tricks. You can search for similar articles on tips and guides. Thank you for reading and for following us regularly.