

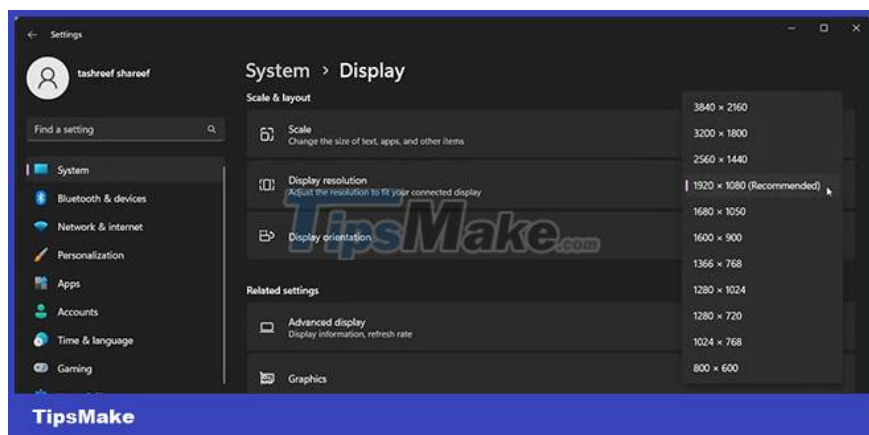
How to fix 'Input Signal Out of Range' error on Windows

When connecting an external monitor to a Windows PC, you may encounter an Input Signal Out of Range error. This error usually occurs if you have a high refresh rate monitor connected to a lower end graphics device.

When connecting an external monitor to a Windows PC, you may encounter an "Input Signal Out of Range" error. This error usually occurs if you have a high refresh rate monitor connected to a lower end graphics device. Also, the lack of support for higher resolutions on the monitor or graphics card is another common cause of this error.

To fix this error, you can change the screen resolution to match the resolution of your video card. In addition, reducing the screen refresh rate to the standard 60Hz mark can help you fix the error. Here's how to do that.

1. Change the screen resolution to Windows recommended settings



One way to fix the "Input Signal Out of Range" error is to set the screen resolution recommended by Windows. Usually, the error message shows the recommended screen resolution, making it easier to define and configure display settings. Otherwise, Windows may automatically detect and suggest it in the Settings app.

On a single monitor setup with no video signal, you'll need to boot into Safe Mode to see your display settings. So, explore TipsMake.com's guide on how to boot into Safe Mode on Windows and then proceed with the steps below.

To change your screen resolution:

1. Press **Win + I** to open Settings.
2. In the **System** tab, scroll down and click **Display**.

3. Next, scroll down to the **Scale & layout** section .
4. Click the **Display resolution** drop-down menu and select the Recommended option .
5. On Windows 10, go to **System > Display** and set **Display resolution** .
6. After you set the correct screen resolution, your external monitor will start receiving the signal and the error will be fixed.

2. Reduce the refresh rate on the screen

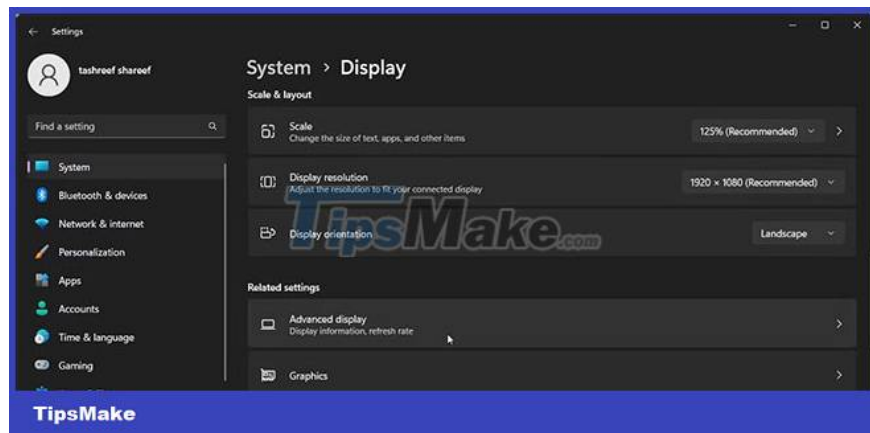
High refresh rate monitors are great for work and gaming. However, if you have an older video card, the high refresh rate of modern monitors can cause the "Input Signal Out of Range" error.

To fix this error, try reducing the screen refresh rate to the standard 60Hz. Once the error is fixed, you can use the options to find a higher refresh rate profile without the error.

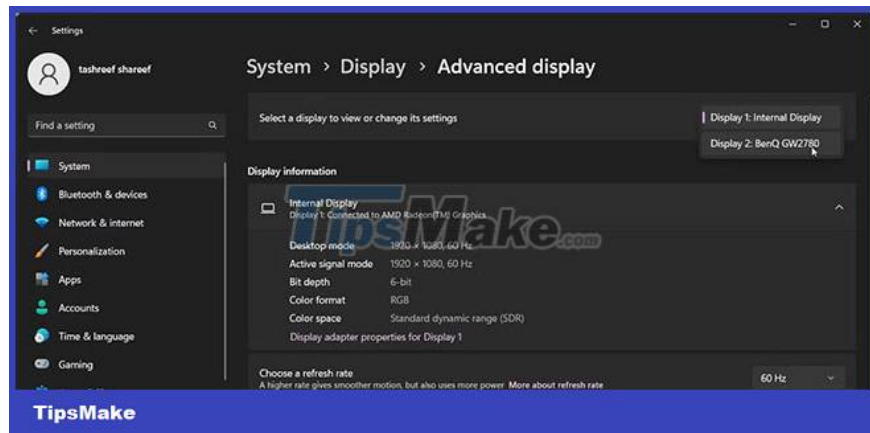
Again, perform these steps in Safe Mode if you have a single monitor setup.

To change the screen refresh rate on Windows:

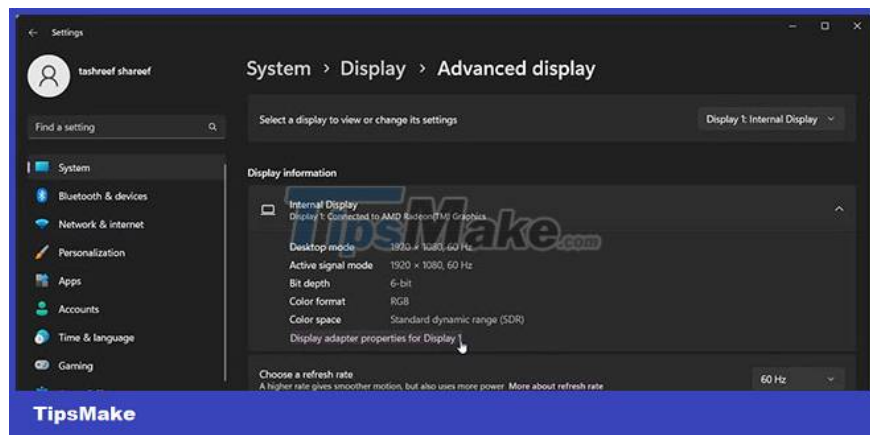
1. Press **Win + I** to open Settings.
2. In the **System** tab , scroll down and click **Display**.
3. Scroll down to the **Related settings** section and click **Advanced display**.



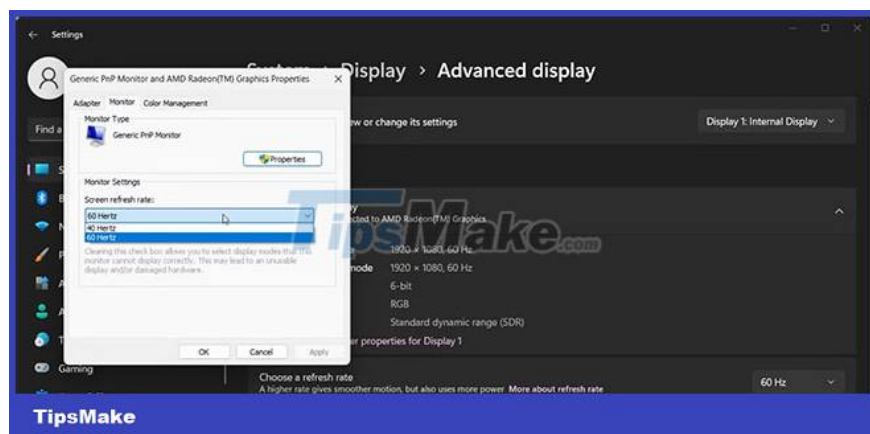
4. Click the **Select a display to view or changes its settings** drop-down menu and select your display. For a single monitor setup, just skip to the next step.



5. Next, under **Display information** , click **Display adapter properties for Display X** .

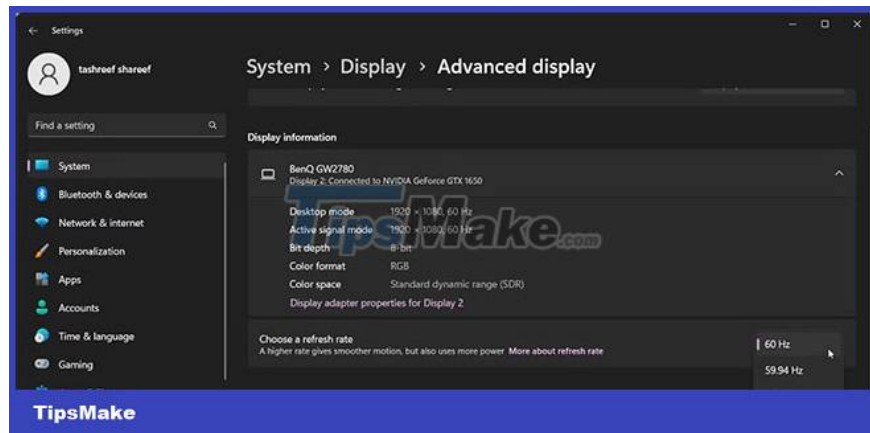


6. Open the **Monitor** tab in the Properties dialog box .



7. Click the **Screen refresh rate** drop-down menu and select **60 Hertz**.

8. Click **Apply** > **OK** to save the changes.



9. Alternatively, click the **Choose a refresh rate** drop-down menu under **Display information** and select **60Hz**.

10. Click **Keep changes** to confirm action.

You may need to perform a reboot to keep the changes and exit Safe Mode. After the reboot, your monitor should start receiving signals.

Now that the error is fixed, open **the Display adapter properties** and gradually increase the refresh rate. Do this until you find a good balance between higher display refresh rates and display adapter compatibility.

3. Update the graphics driver

Incompatible or outdated graphics drivers can cause the connected monitor to malfunction. To fix the problem, install the latest available driver for your graphics card. Explore [TipsMake.com](https://www.tipsmake.com)'s guide on how to update graphics drivers on Windows computers.

Make sure to use the "**Safe mode with networking**" option when you boot into Safe Mode, as this will activate the Internet connection and allow you to download new drivers.

This error usually occurs on systems with outdated video cards or old monitors that support lower refresh rates. To fix the error, set the screen resolution to the recommended and the refresh rate to the standard 60Hz. If the problem persists, install pending display driver updates to resolve the issue.

You finished reading the article "**How to fix 'Input Signal Out of Range' error on Windows**" edited by the [TipsMake](https://www.tipsmake.com) team. We hope this article has provided you with many useful tech tips and tricks. You can search for similar articles on tips and guides. Thank you for reading and for following us regularly.