

How to fix hard drive Unallocated

One of the common errors on the computer is the hard drive being unallocated and facing the risk of losing all internal data.

Unallocated hard drive errors come from many different reasons and in this article, the software tips will guide you how to fix Unallocated hard drive errors.

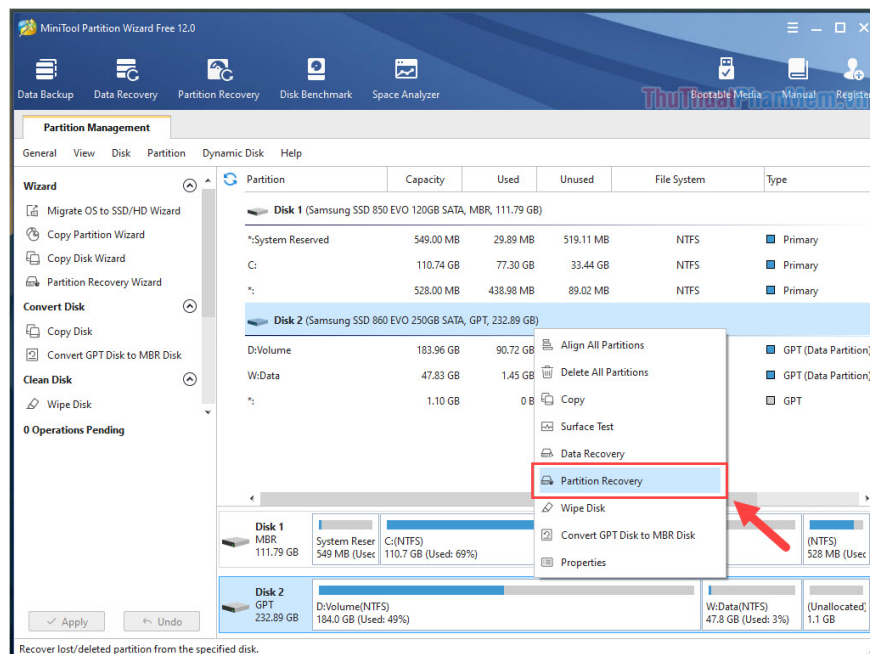
1. Fix Unallocated hard drive error with MiniTool Partition Wizard software

MiniTool Partition Wizard is a great solution to handle, fix errors related to hard drives on computers and laptops. To handle unallocated hard drive errors, this software can completely do with very high efficiency.

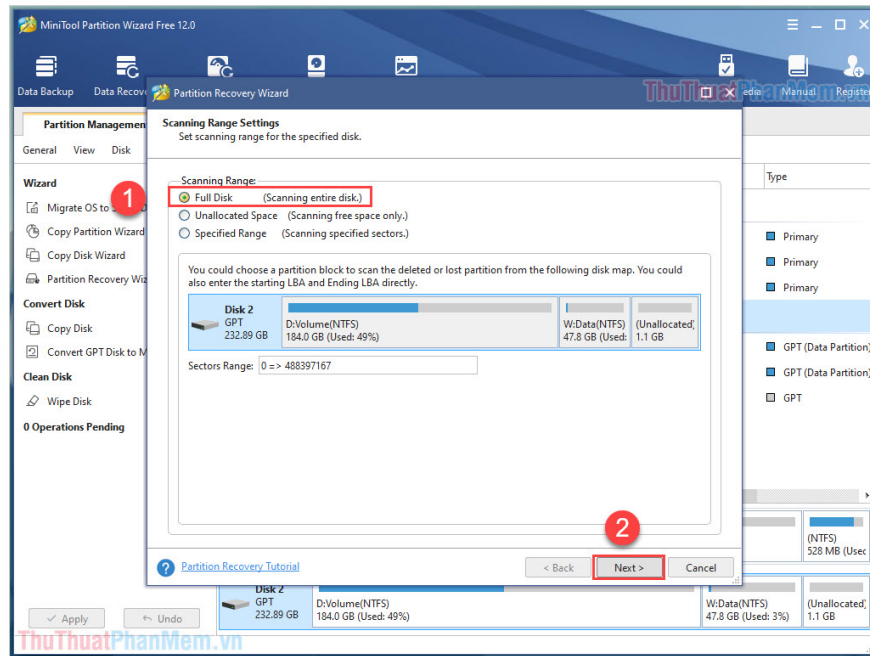
Homepage: <https://www.partitionwizard.com/free-partition-manager.html>

Step 1: You proceed to the homepage to download and install the software.

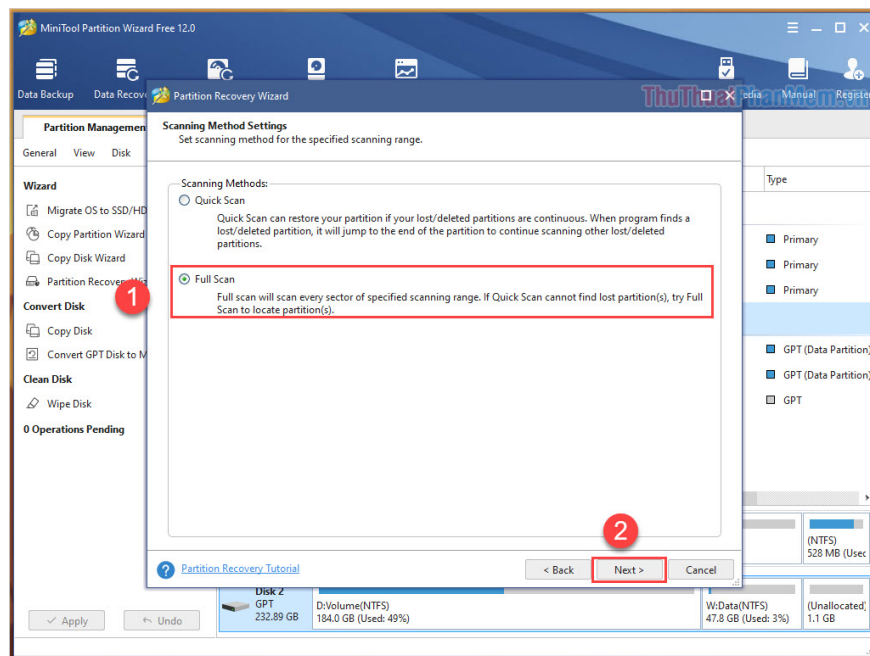
Step 2: First, right-click on the unallocated hard drive and select Partition Recovery.



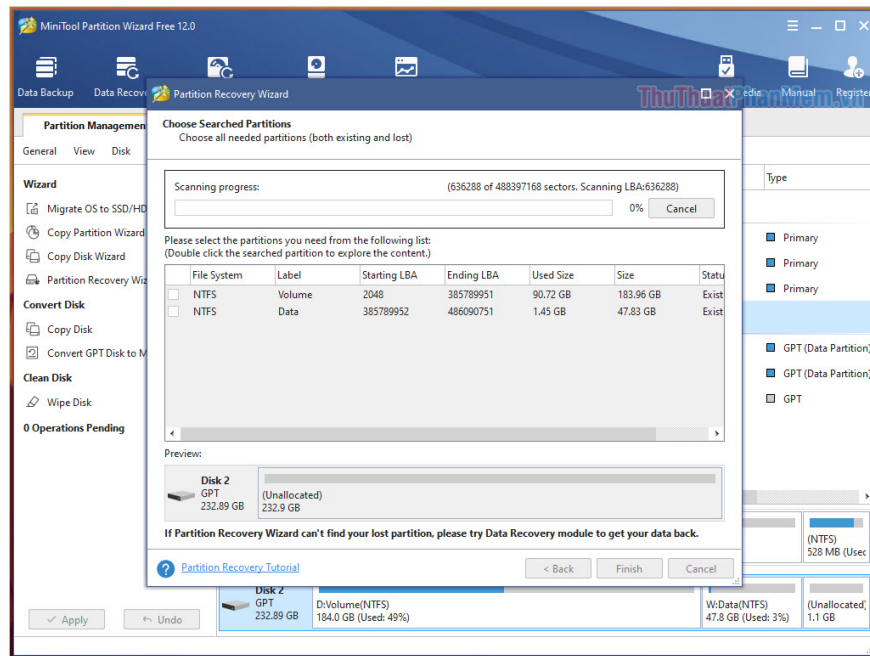
Step 3: At this time, the system will ask you to enter the data area you want to scan for the unallocated drive. To improve working efficiency and fix errors, select **Full Disk** to scan the entire drive.



Step 4: Next, you have the choice between **Quick Scan (QuickScan)** and **Complete Scan (Full Scan)**, you select **Full Scan** to improve scan performance and increase error handling rate.



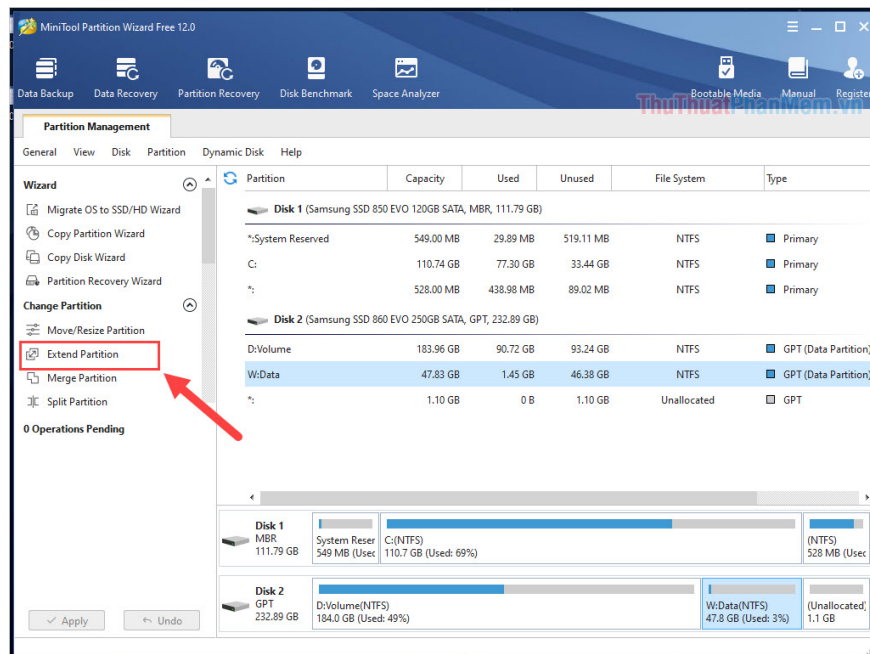
Step 5: Finally, just wait for the drive to be scanned and you have finished fixing the Unallocated hard drive.



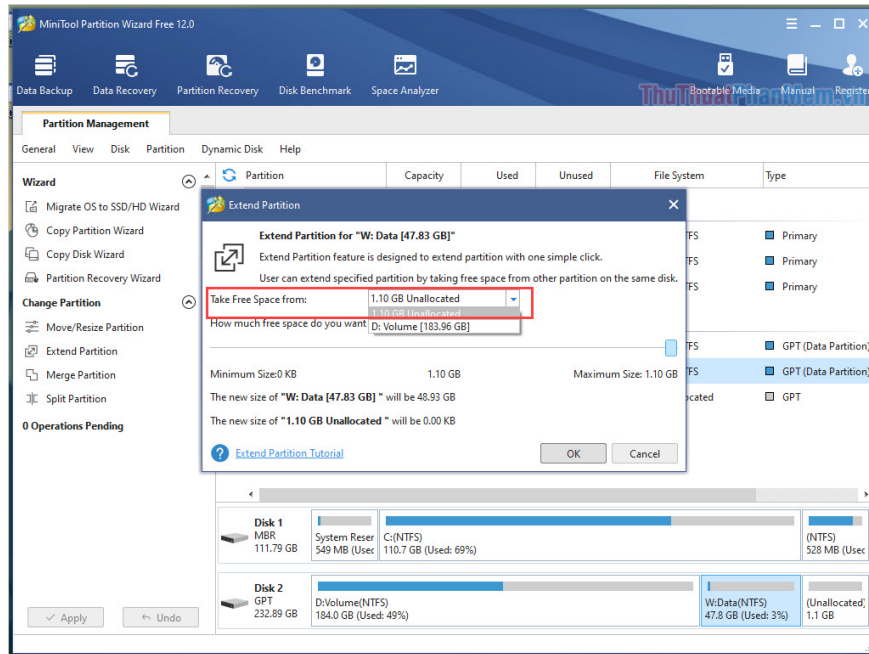
2. Fix Unallocated hard drive error by partitioning

Step 1: You start the MiniTool Partition Wizard software.

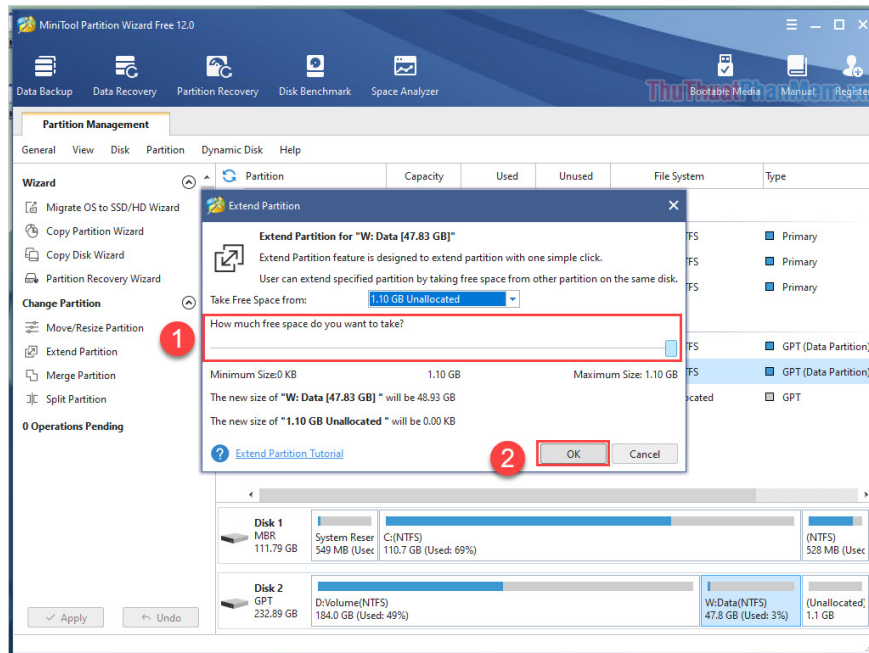
Step 2: Next, select the drive to fix **Unallocated** errors and select **Extend Partition**.



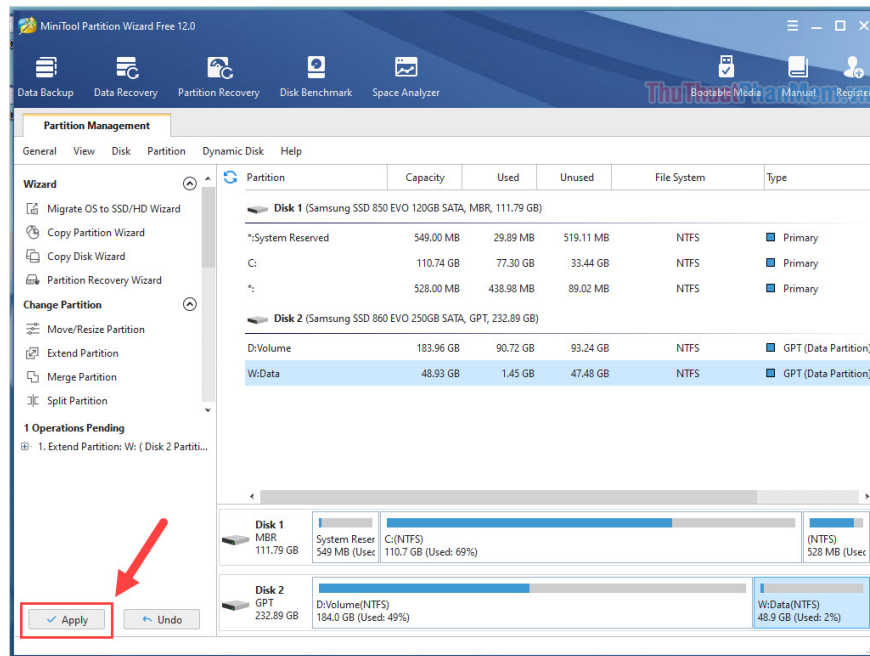
Step 3: Then, in the section **Take Free Space From** you select the drive Unallocated to merge.



Step 4: Before combining, drag the How much free space do you want to take? Go to the maximum and select **OK** to continue.



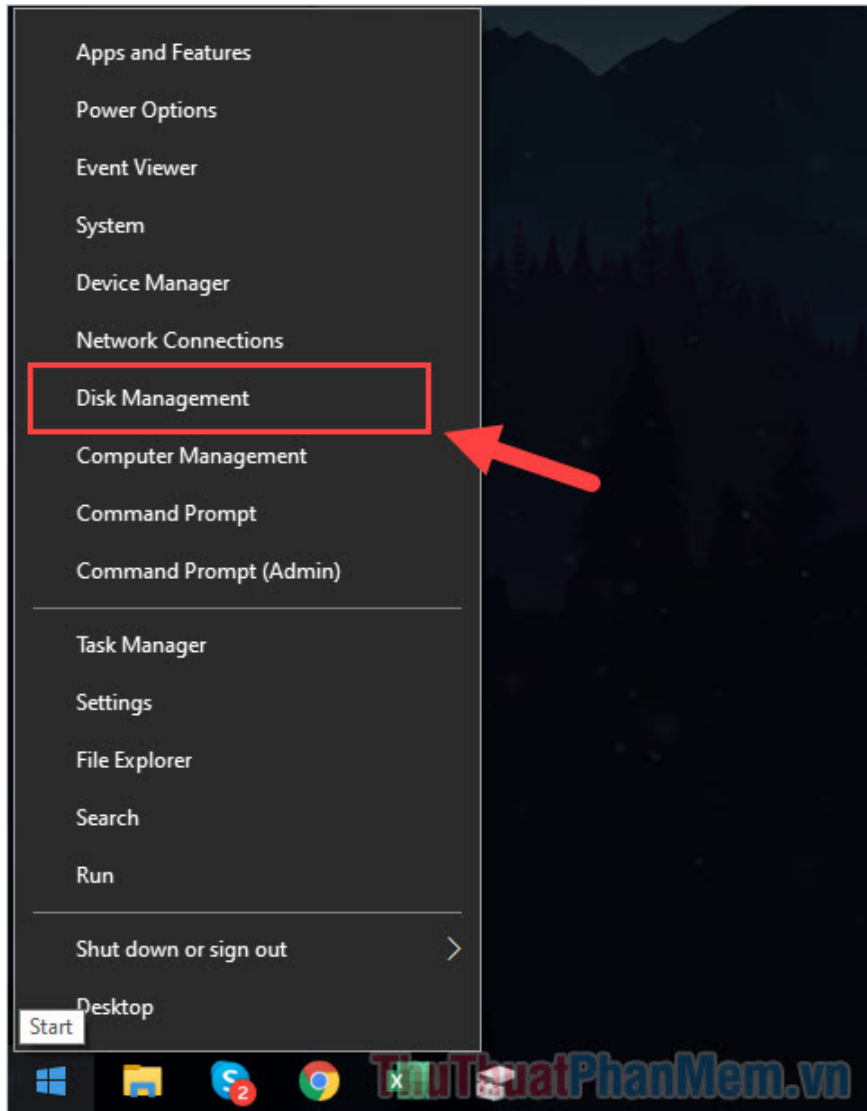
Step 5: Finally, click **Apply** to apply the new changes to the drive.



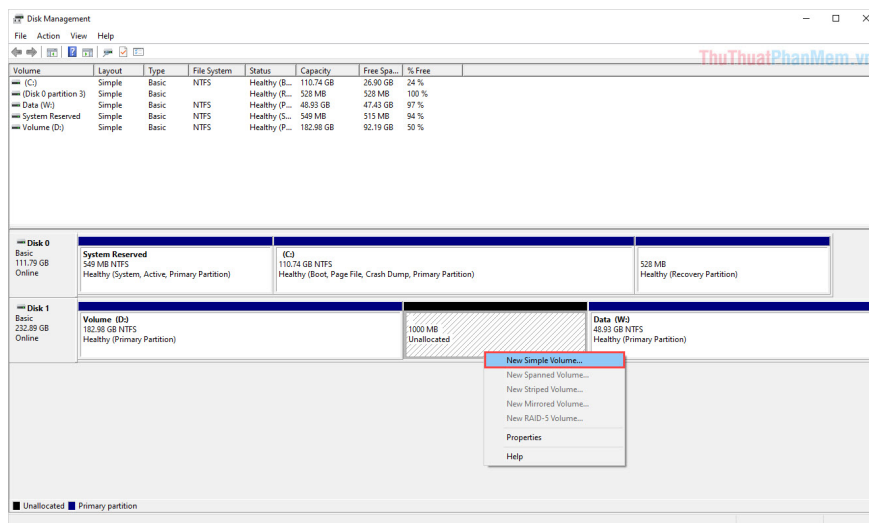
3. Fix Unallocated hard drive error on Windows

When hard drives are unallocated, you can choose to create them into a new storage partition on Windows to use as other drive partitions.

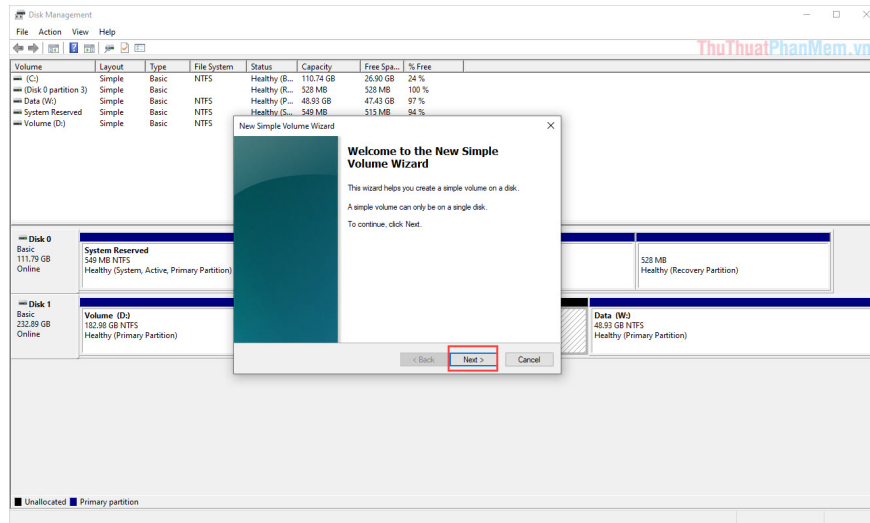
Step 1: Right-click on the **MenuStart** icon and select **Disk Management** .



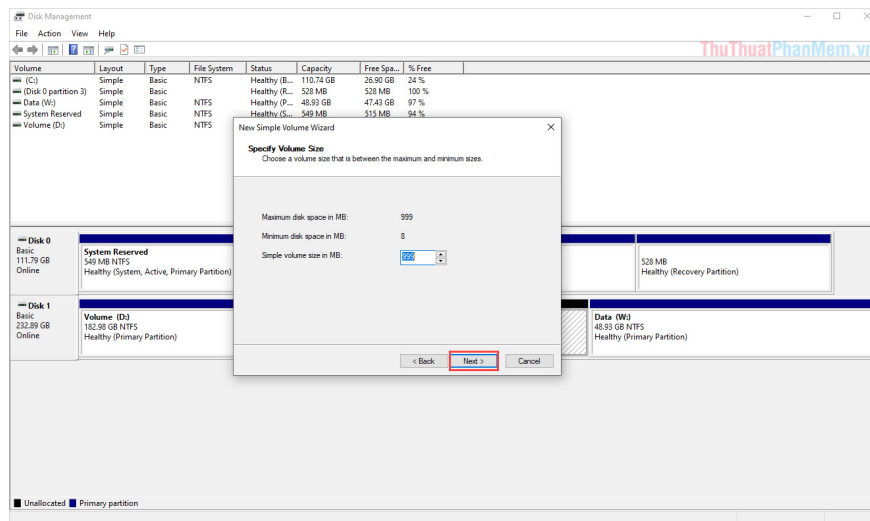
Step 2: Then, you click on the partition **Unallocated** and select **New Simple Volume** .



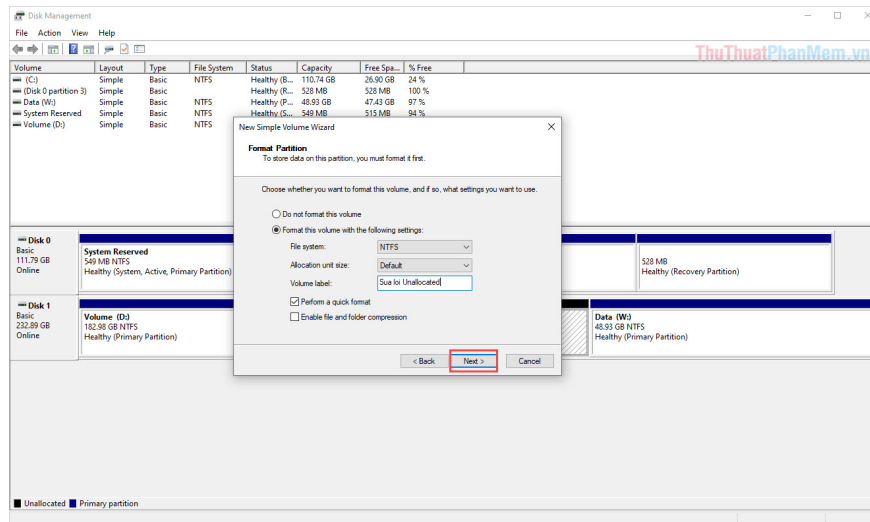
Step 3: Next, click **Next** to continue.



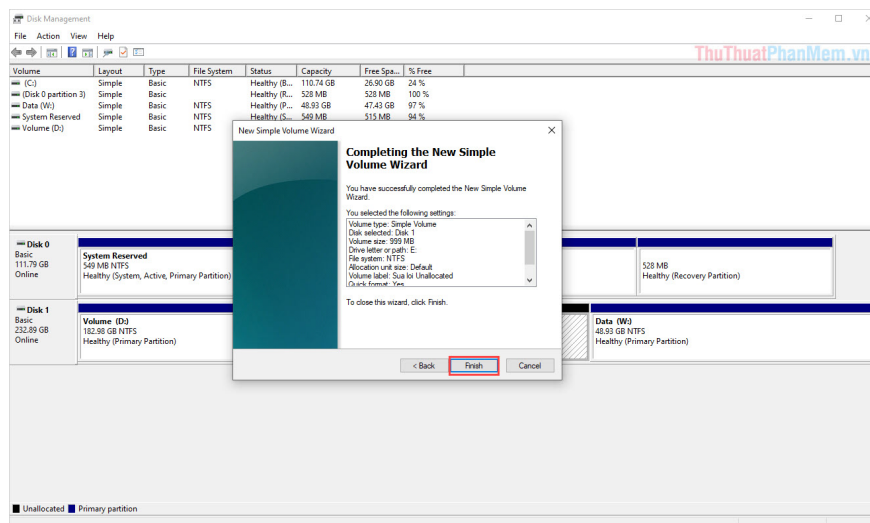
Step 4: Now, you need to set the amount of space for the new partition we are going to create, you set the maximum to have plenty of storage space.



Step 5: Then you proceed to name the new storage partition and click **Next** to finish.



Step 6: Finally, select **Finish** to proceed with the creation of the new storage partition. Now you will see the drive is not **Unallocated** error anymore.



In this article, Software Tips guide you how to fix unallocated drive errors quickly and effectively. Good luck!

You finished reading the article "**How to fix hard drive Unallocated**" edited by the [TipsMake](#) team. We hope this article has provided you with many useful tech tips and tricks. You can search for similar articles on tips and guides. Thank you for reading and for following us regularly.