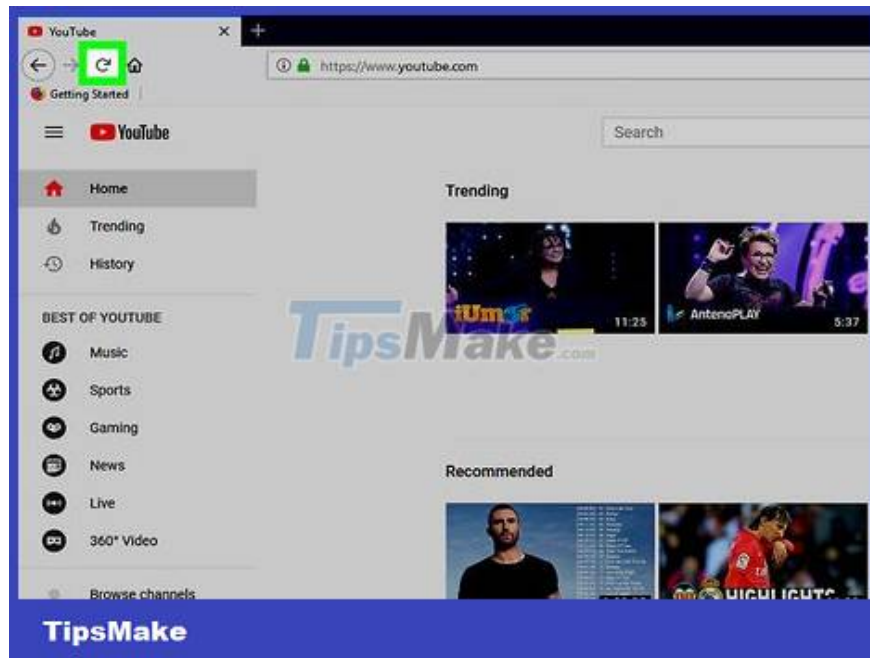


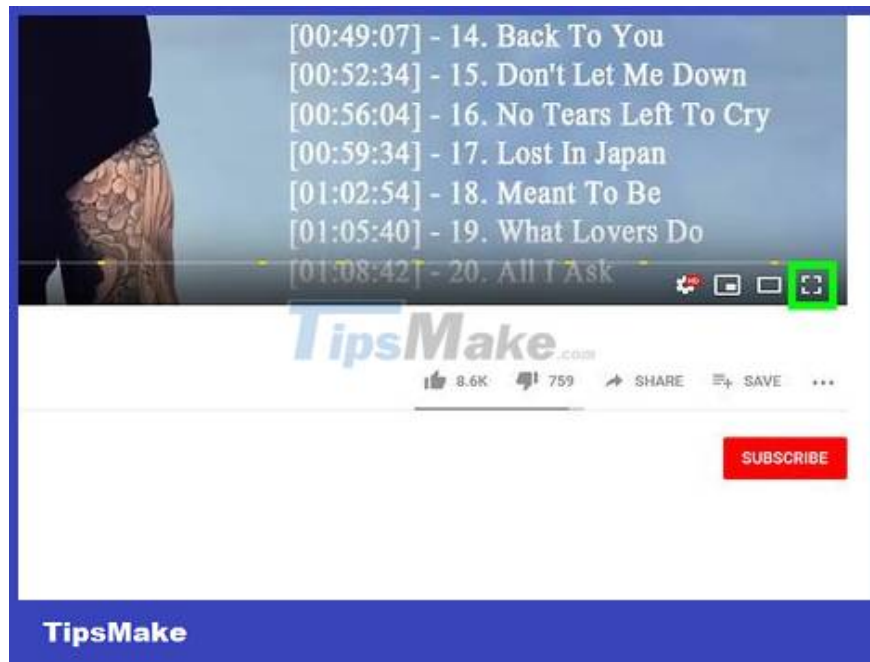
# How to Fix Google Chrome Error When Watching YouTube Fullscreen

This article shows you how to fix fullscreen errors that arise when watching YouTube with Google Chrome. This error can cause part of your browser or desktop to be displayed while in full screen mode, or worse, the feature to be turned off. Usually restarting the browser or computer can solve the problem, but if that still doesn't work, you need to customize some settings to prevent the full screen error from occurring.

## Use basic tips



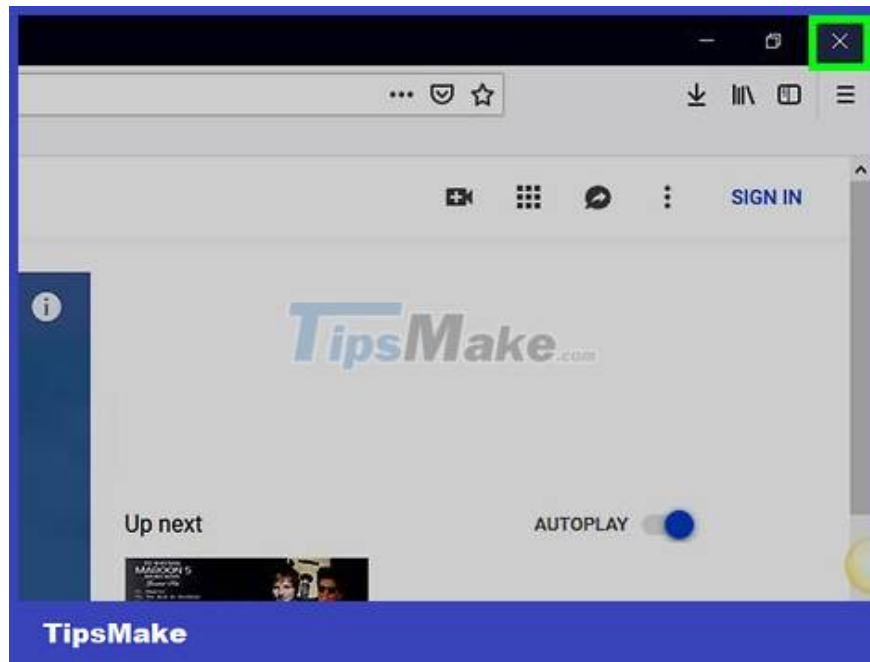
Refresh (reload) the page. Sometimes the YouTube page is not loading properly, causing graphic errors while viewing. If this is the reason why you are getting the full screen error, press the F5 key or click the "Refresh" button to reload the YouTube page and fix the error.



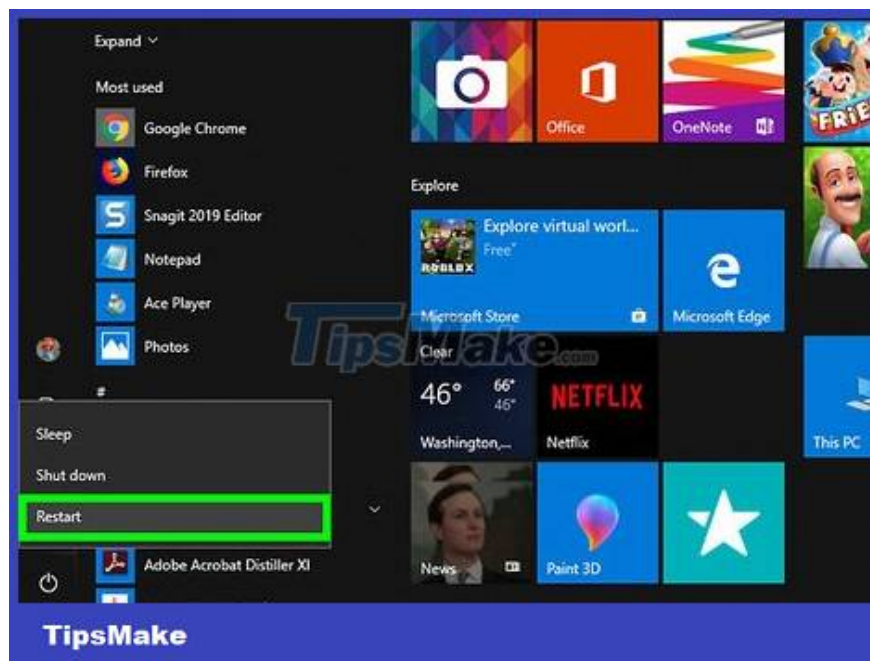
Try using full screen mode when Chrome is not fully zoomed in. If your Chrome window takes up the entire screen, it can cause part of the desktop to be visible when watching YouTube in full screen mode. You can fix this by clicking the square button in the upper right corner of the window (Windows) or the green button in the upper left corner of the window (Mac) and then trying to use YouTube in full screen mode .



Use Google Chrome's full screen mode. If part of your desktop is displayed while YouTube is in full screen, press F11 (on Windows) or ? Command+? Shift+F (on Mac) to set up Google Chrome in full screen mode. This step helps to maximize the YouTube window to fit the screen.



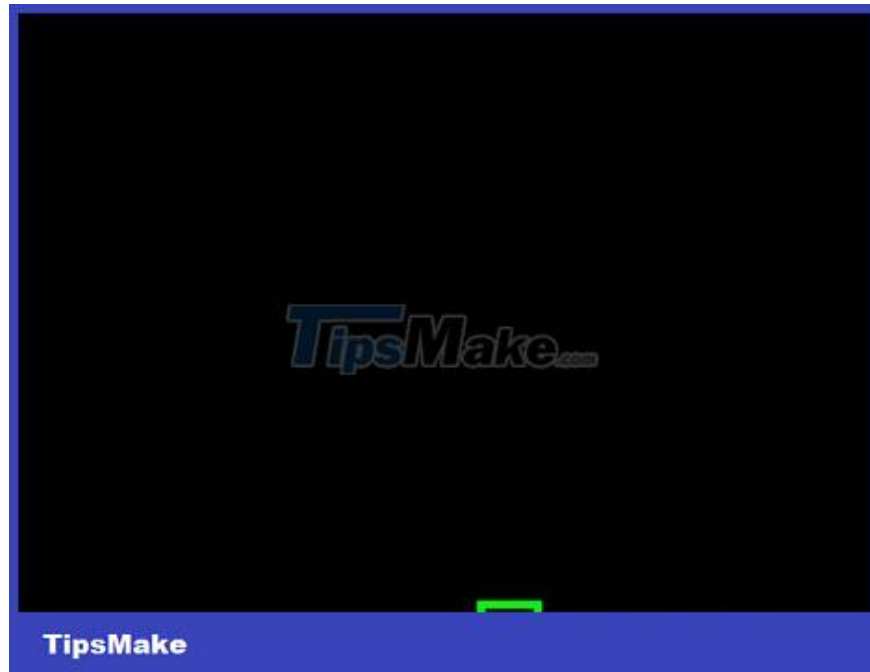
Close and reopen Chrome before trying again. Sometimes the full screen error arises because Google Chrome is not loading properly. To fix this, close Chrome, then reopen it and return to the video you're watching.



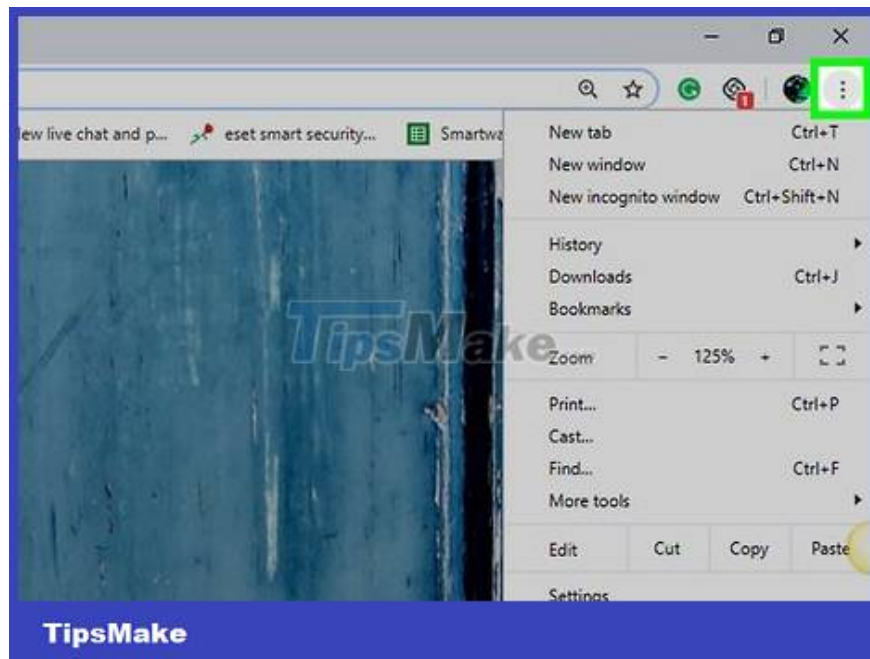
Restart the computer. If the above methods do not work, turn off your computer and then turn it back on to fix the error of viewing YouTube full screen in Google Chrome.

This will fix the full screen error in most cases. If you have restarted your computer and find that the full screen error persists, try each of the ways below in turn.

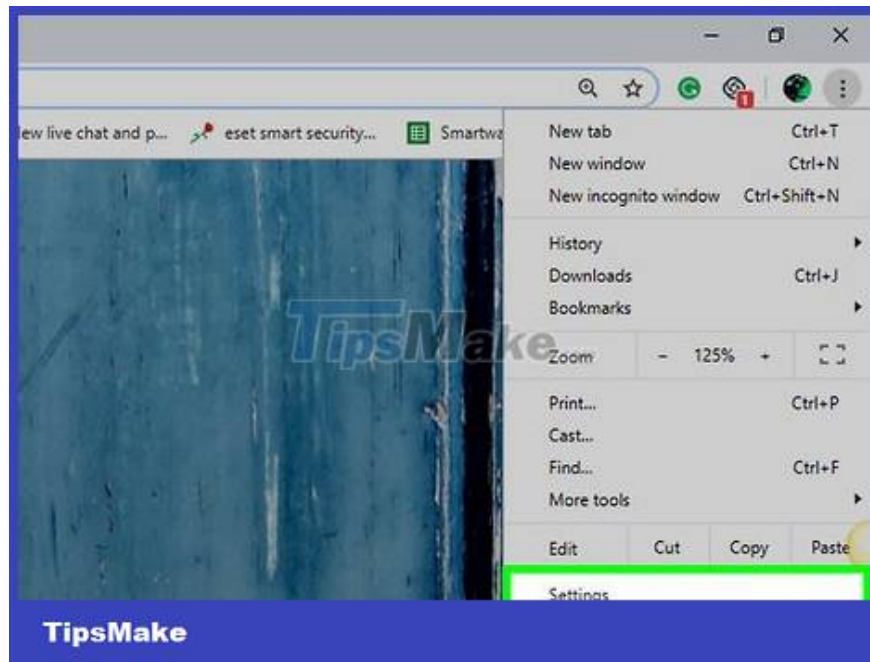
## Uninstall Theme



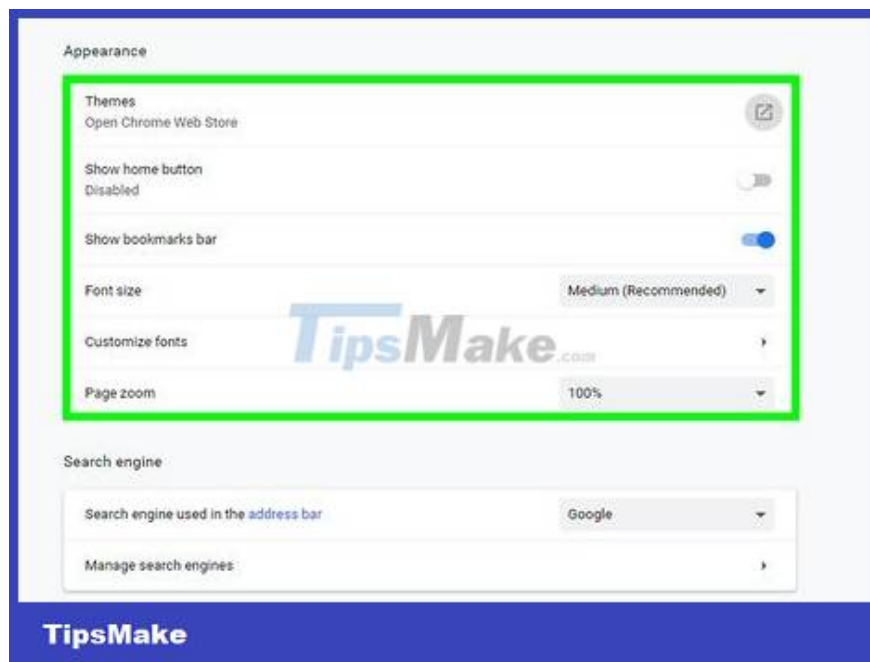
Open Google Chrome. Click or double-click the Chrome app icon with a red, yellow, green, and blue globe.



Click . \_ This button is located in the upper-right corner of the Chrome window. A drop-down menu will be displayed.



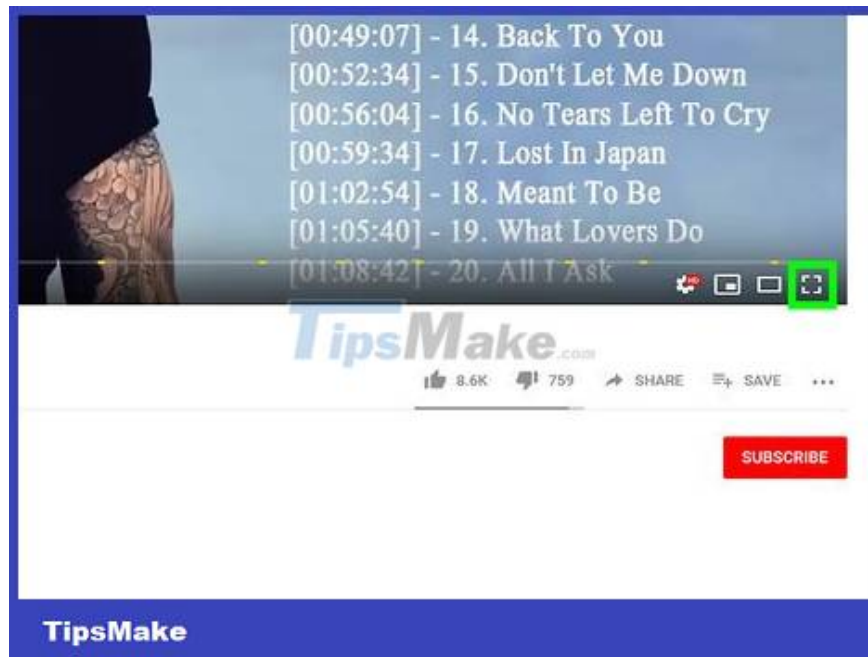
Click Settings . This section is in the drop-down menu. This step opens the Settings page.



Scroll down to the "Appearance" section. This section is near the top of the Settings page, but you may need to scroll down a bit to see it.

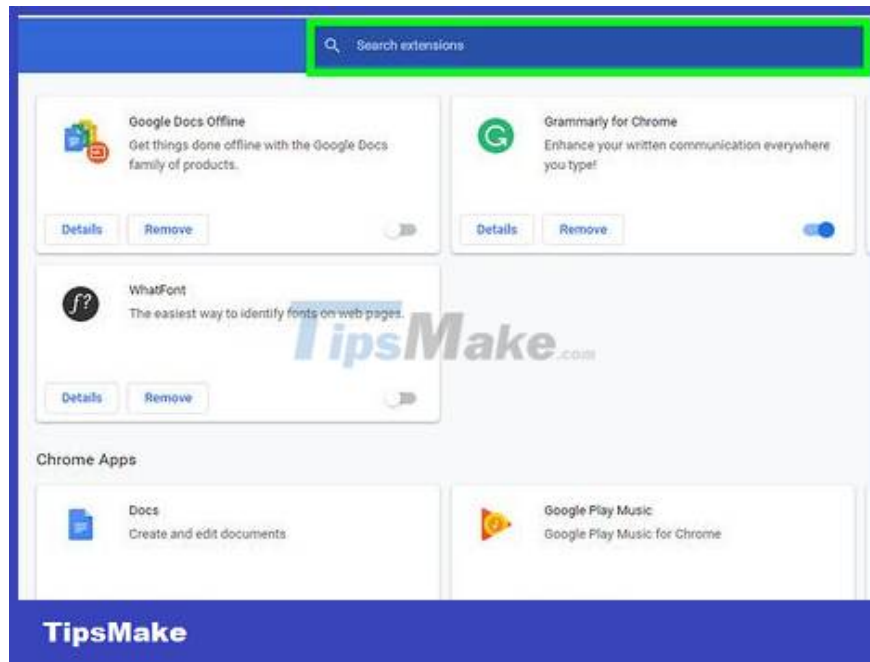


Click Reset to default . This section is usually located to the right of the "Themes" tab. After clicking, all themes (backgrounds) installed in Google Chrome will be removed.



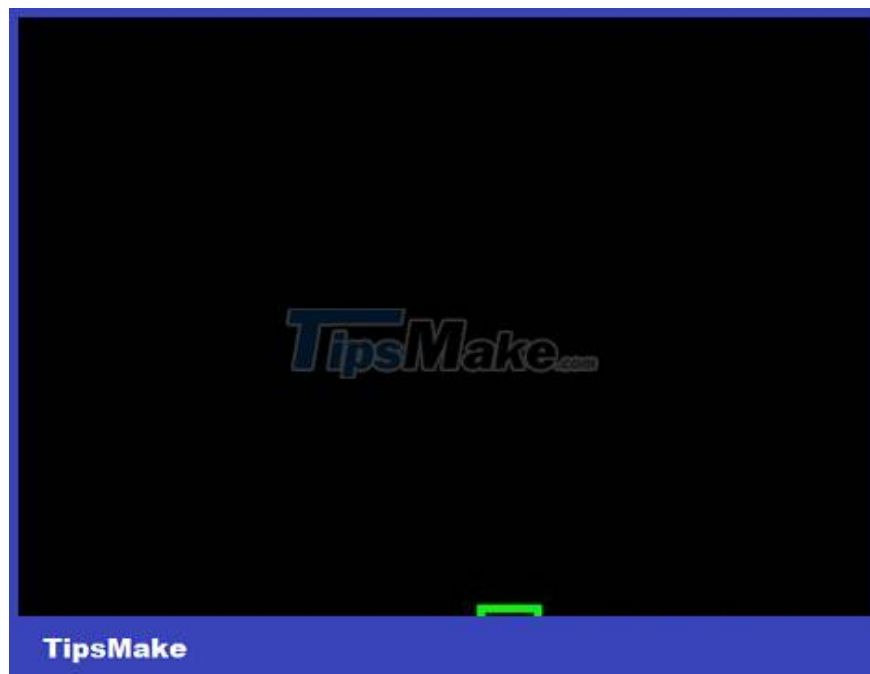
Try watching YouTube in full screen mode. Go to your YouTube video and click the full screen icon in the bottom right of the play window. If the installed theme is the cause of the video's full screen feature not working, you can now use the feature.

## Turn off extensions

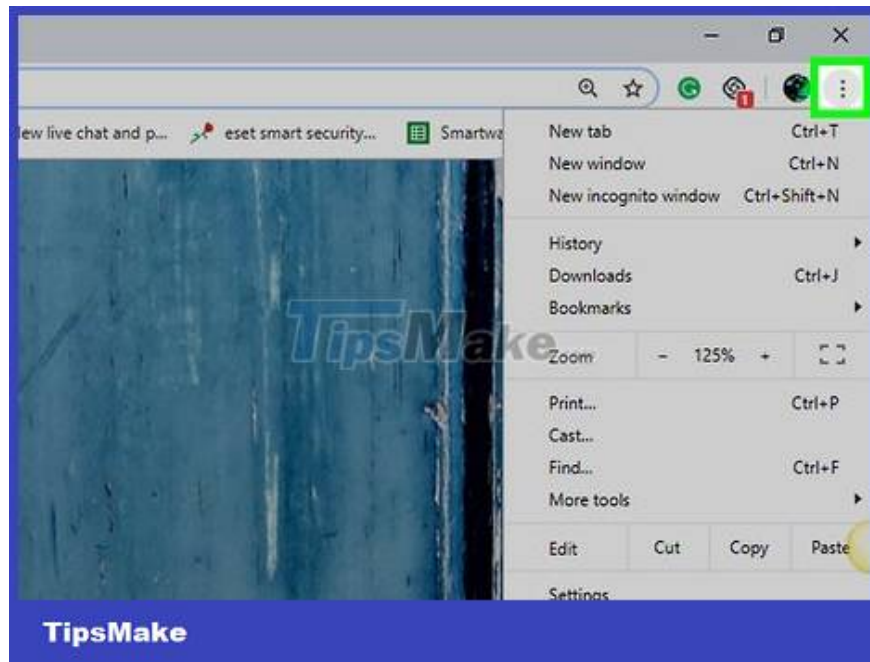


Understand when to disable extensions. If you notice that the full-screen error occurs right after installing an extension, there's a good chance that extension is the cause. Disabling (but not Removing) the extension can help fix the problem.

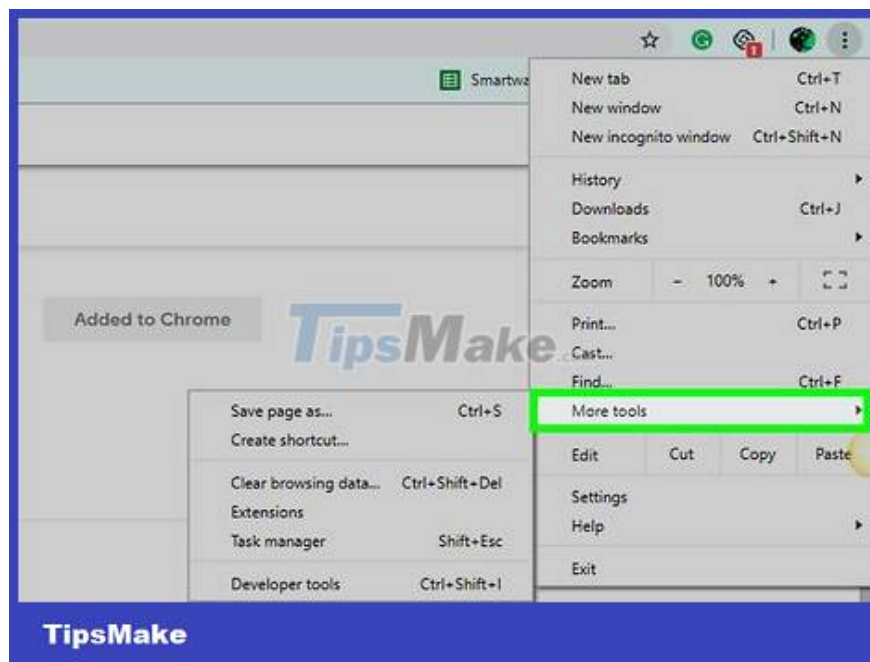
Chrome updates can also cause some older extensions to become unstable, potentially causing strange bugs as a result.



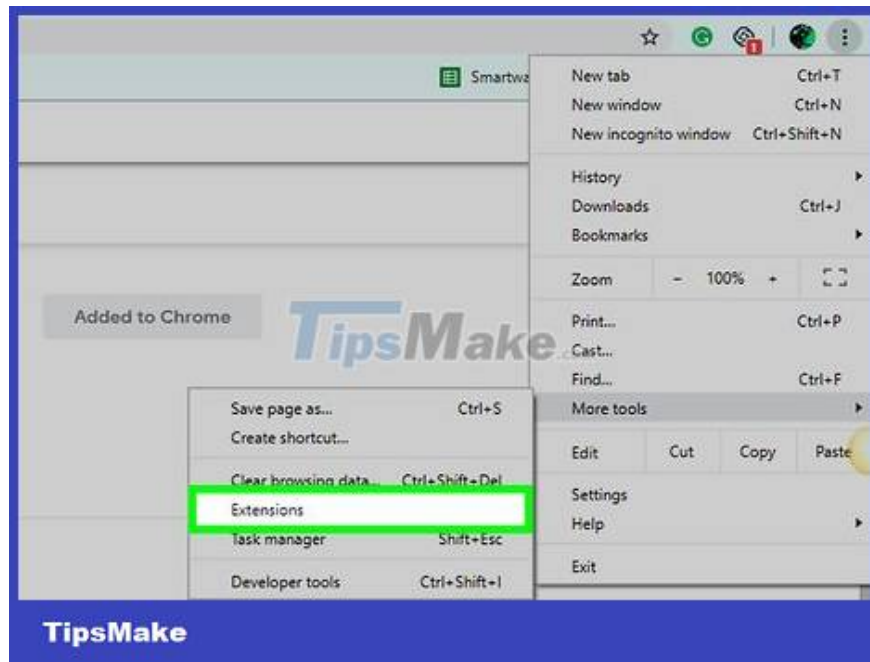
Open Google Chrome. Click or double-click the Chrome app icon that looks like a red, yellow, green, and blue globe.



Click . \_ You will see this button in the upper right corner of the window. A drop-down menu will appear.



Select More tools . This section is in the drop-down menu. Once selected, a menu will appear.

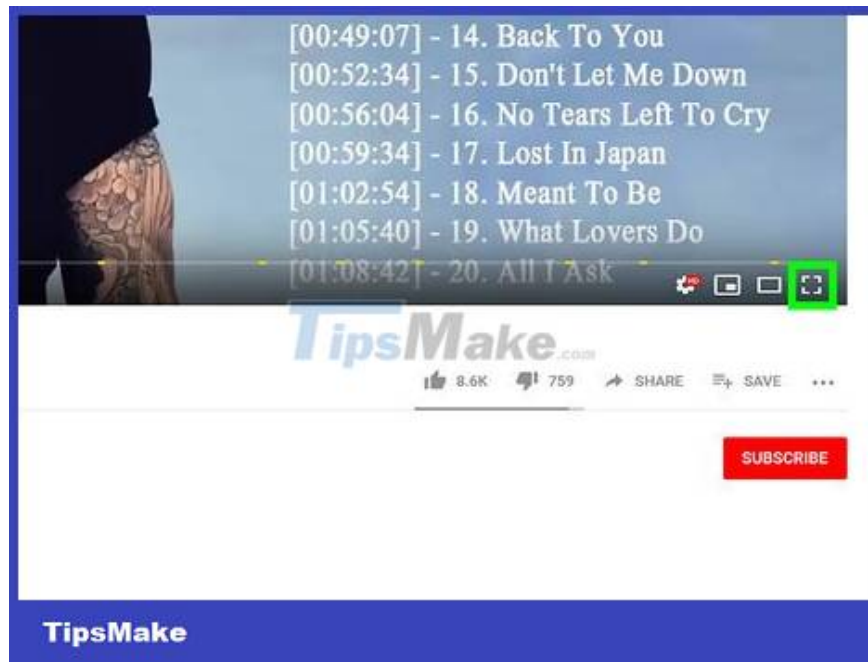


Click Extensions . This option is in the menu that appears. This step opens the Extensions page.



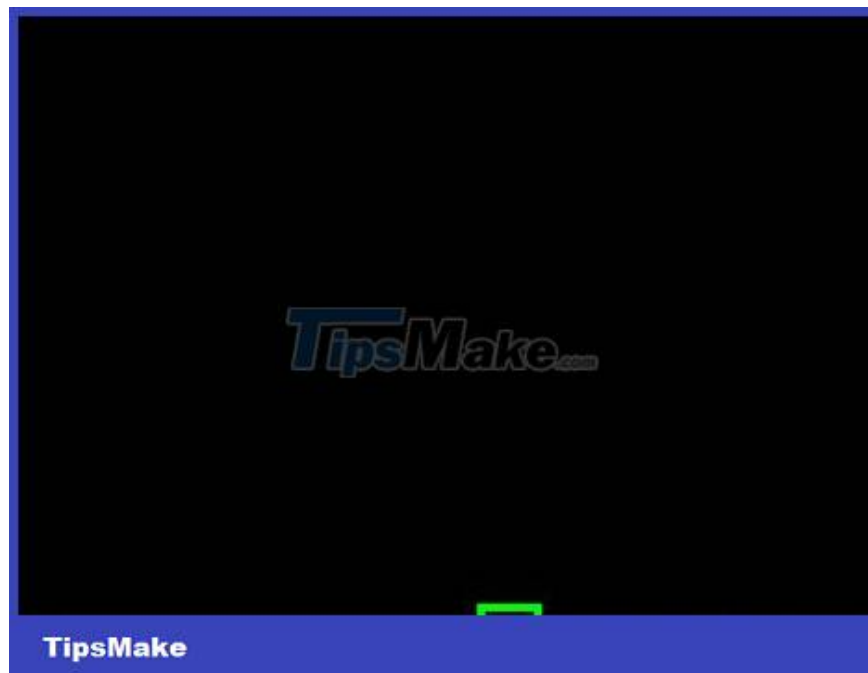
Click the blue switch below the extension. The switch will turn white, indicating that the extension has been turned off.

Repeat this step with other necessary extensions before continuing.

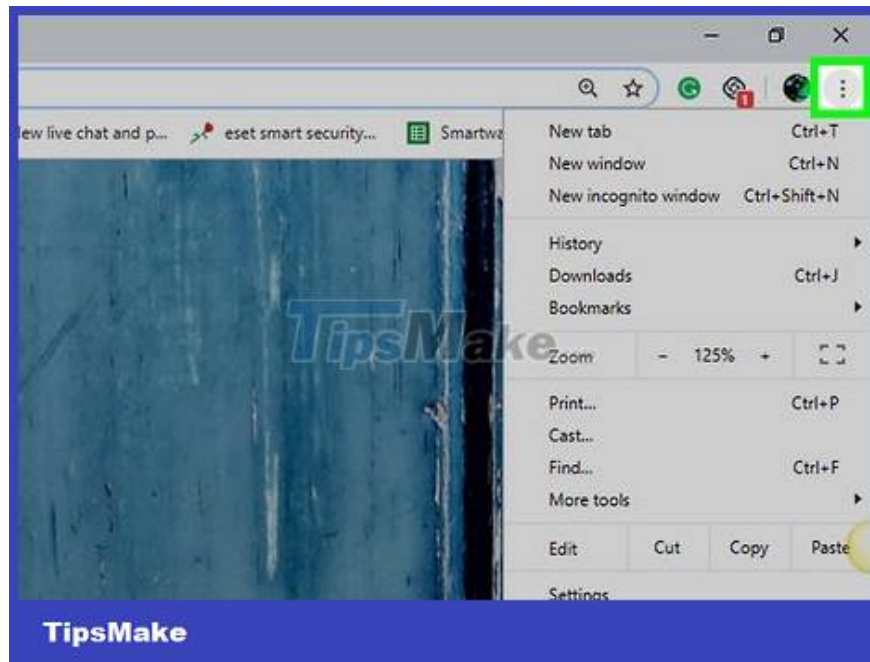


Try using YouTube in full screen mode. After disabling all possible extensions (or disabling all browser extensions), return to your video and click the full screen icon in the lower right corner of the player. If an extension is causing the problem, the player will now go full screen without any errors.

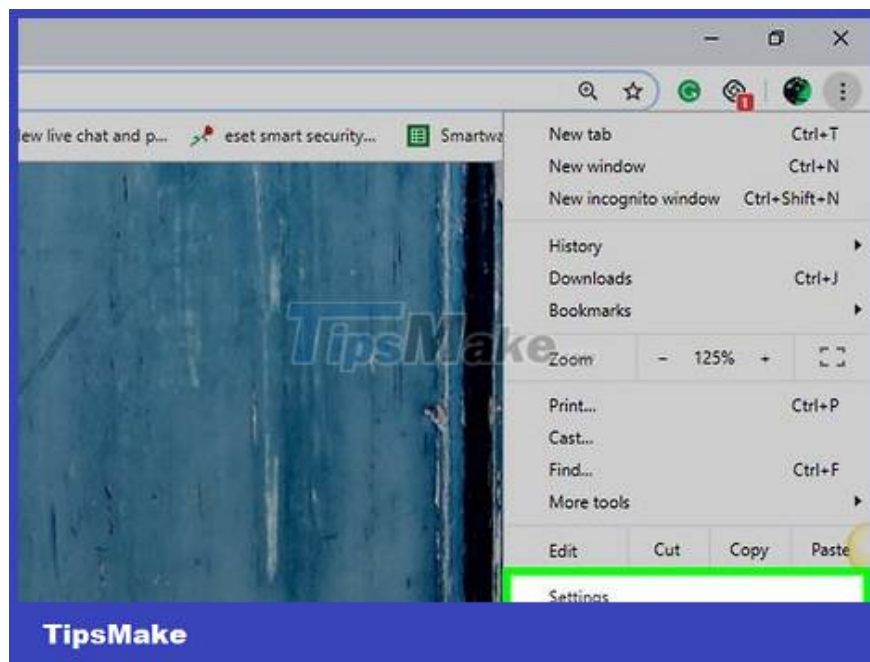
### **Disable Hardware Acceleration**



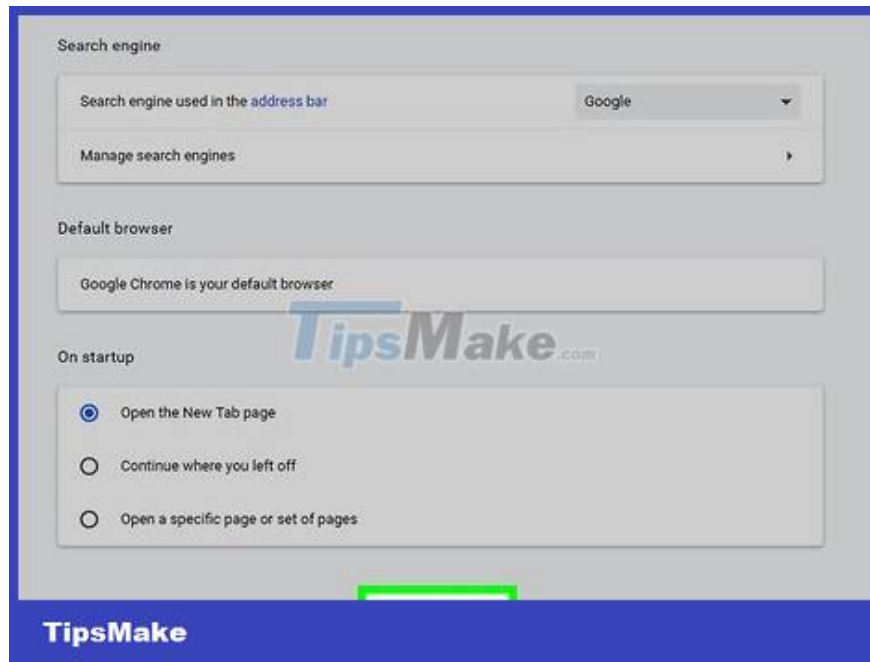
Open Google Chrome. Click or double-click the Chrome app icon with a red, yellow, green, and blue globe.



Click . \_ This button is located in the upper-right corner of the window. A drop-down menu will be displayed.



Click Settings . This option is in the drop-down menu. The Settings page will be displayed.



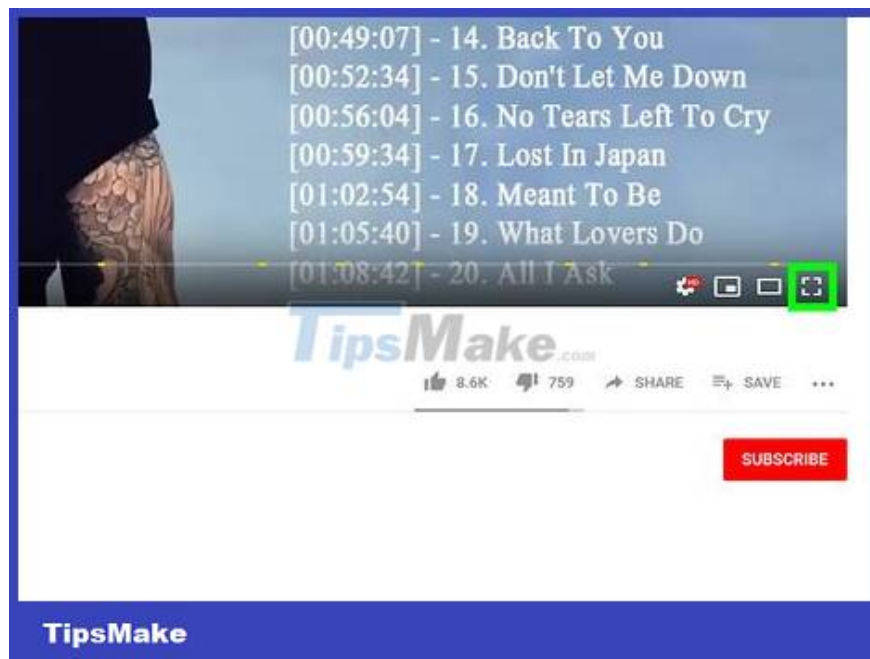
Scroll down and click Advanced . This button is located at the bottom of the page. More options will appear.



Scroll down to the "System" section. You'll see this section near the bottom of the page.

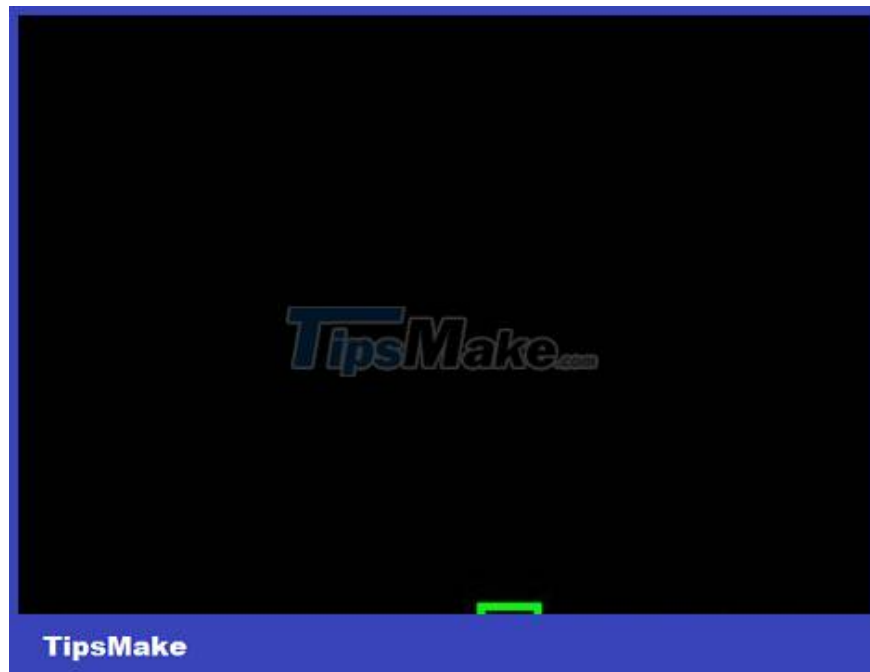


Click the blue switch "Use hardware acceleration when available". This causes the switch to be grayed out, indicating that hardware acceleration is now disabled.



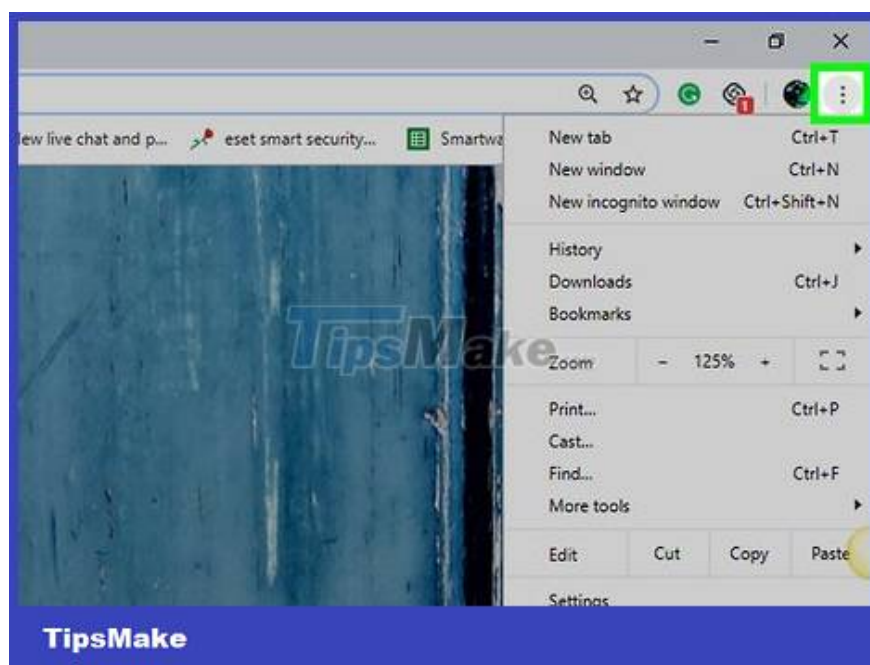
Try watching YouTube in full screen mode. Go back to your video and click the "full screen" icon in the lower right corner of the play window. The video will now be played in full screen mode.

## Update or reopen Chrome



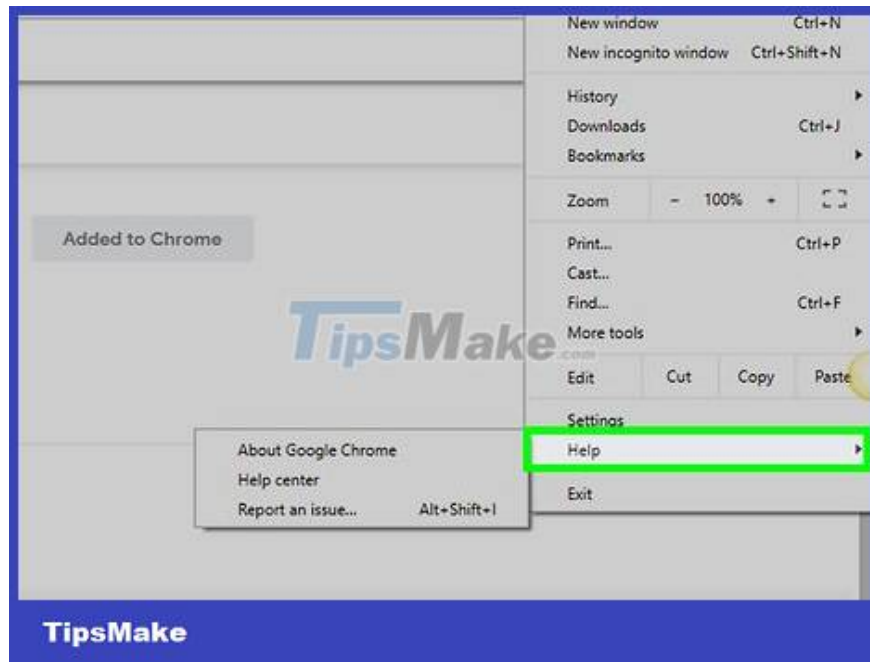
TipsMake

Open Google Chrome. Click or double-click the Chrome app icon that looks like a red, yellow, green, and blue globe.

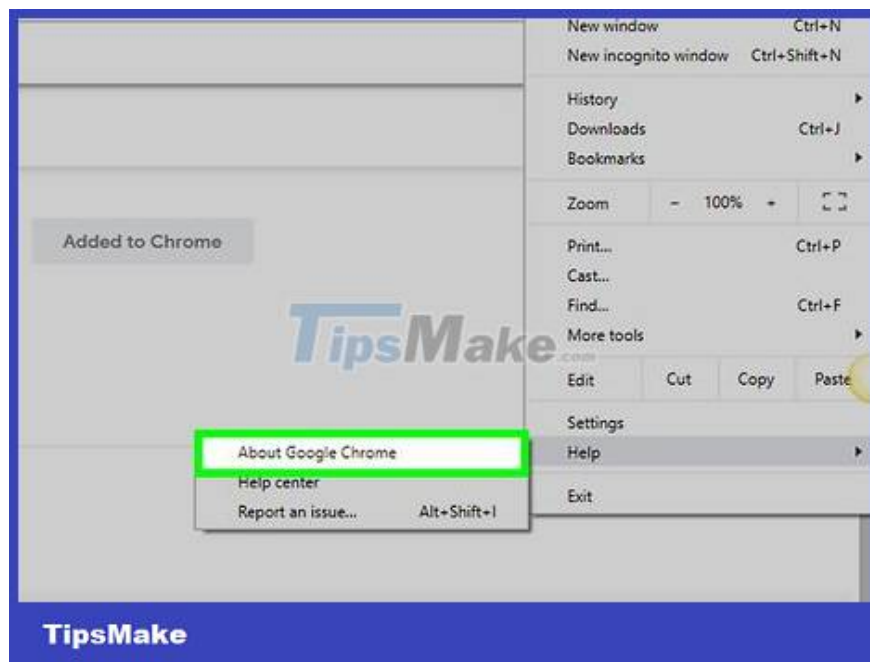


TipsMake

Click . \_ This button is located in the upper-right corner of the window. A drop-down menu will appear.



Point to Help . This option is near the bottom of the drop-down menu. You will see another menu.

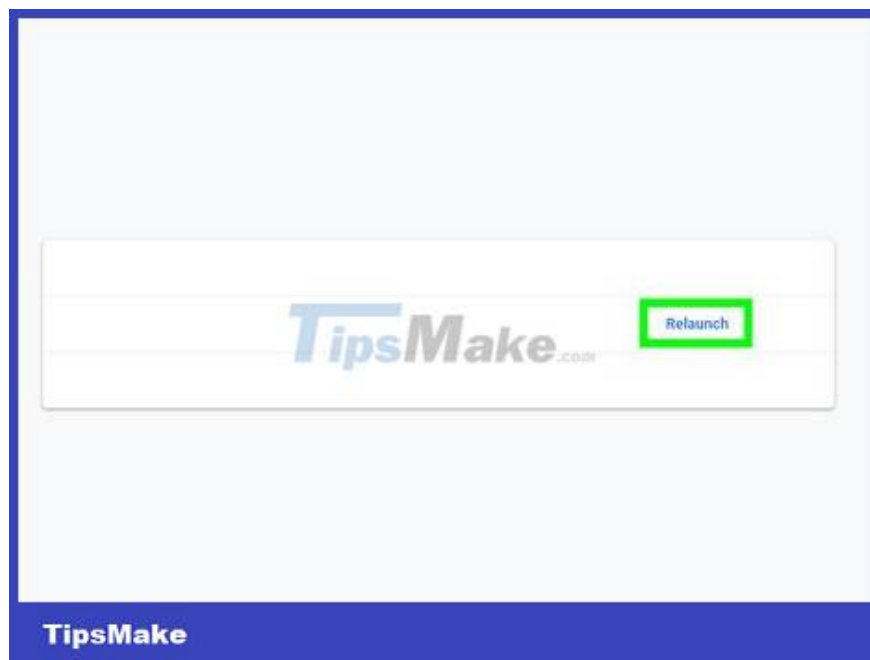


Click About Google Chrome (About Google Chrome). This section is located in the menu that appears.

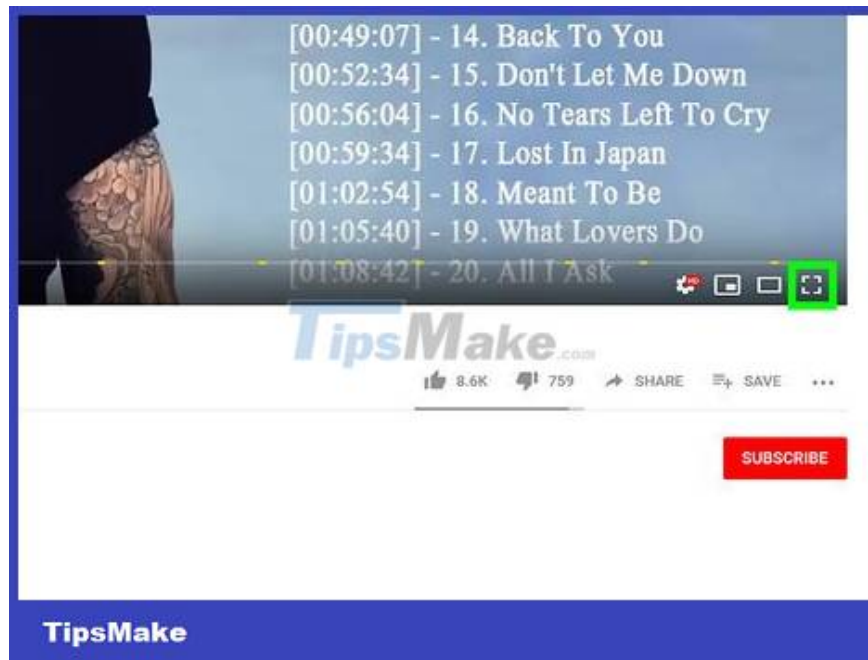


Allow updates to be installed on notification. If Chrome asks you about updating, click Update Google Chrome and wait for the update to be installed.

If Google Chrome is already up to date, skip this step and proceed to the next step.



Click the Relaunch button when possible. Once the update is installed, you'll see this button. Once clicked, Chrome will be closed and reopened.



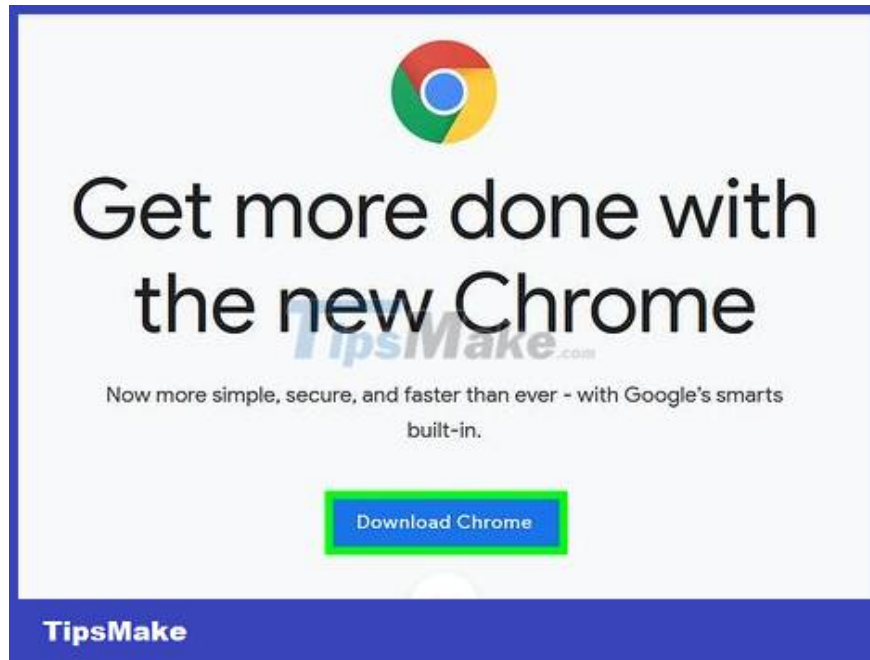
Try watching YouTube in full screen mode. Go back to your video and click the "full screen" icon in the bottom right of the play window. The video will now be played in full screen mode.

If your video is still not playing in full screen, try one of the ways below.



Restore Chrome to default settings. This way can fix the full screen error, but also remove the current setting:

1. Click ? in the upper right corner.
2. Click Settings.
3. Scroll down and click Advanced.
4. Scroll down and click Restore settings to their original defaults.
5. Click Reset settings when prompted.



Uninstall Google Chrome and then reinstall it. This step helps you force Chrome to update if it knows that a new version is available but Chrome refuses to update.

You can reinstall Chrome by going to <https://www.google.com/chrome/>, clicking Download Chrome, clicking Accept and Install, and double-clicking the file. downloaded installation information, then follow the on-screen instructions.

You finished reading the article "**How to Fix Google Chrome Error When Watching YouTube Fullscreen**" edited by the [TipsMake](#) team. We hope this article has provided you with many useful tech tips and tricks. You can search for similar articles on tips and guides. Thank you for reading and for following us regularly.