

How to fix file upload limit issues on Google Drive, including download limit errors.

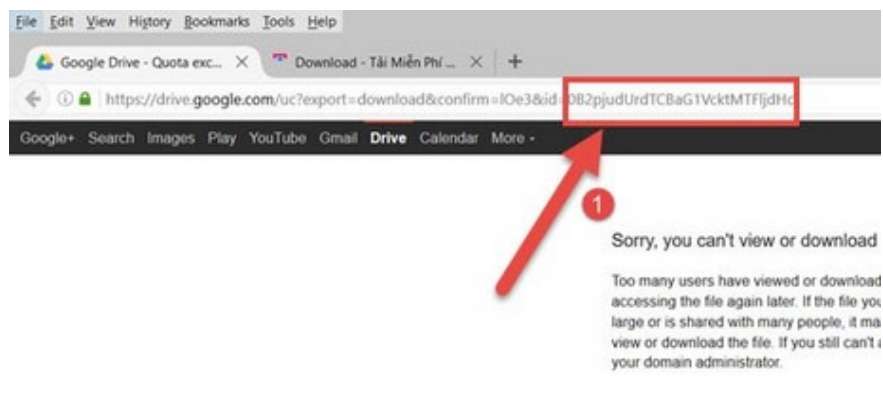
Google Drive is a popular data storage and sharing platform. If you encounter a 24-hour download limit error, please refer to the instructions below to resolve the issue and continue downloading.

Google Drive allows file sharing online, but if too many people download at the same time, the file may be blocked from download for 24 hours.

How to fix file upload limit issues on Google Drive, including download limit errors.

Step 1: Select a Google Drive address that has failed to download enough times, then copy the last character of the URL.

For example: '0B2pjudUrdTCBaG1VcktMTFljdHc', which means the part after '=lOe3&id='.

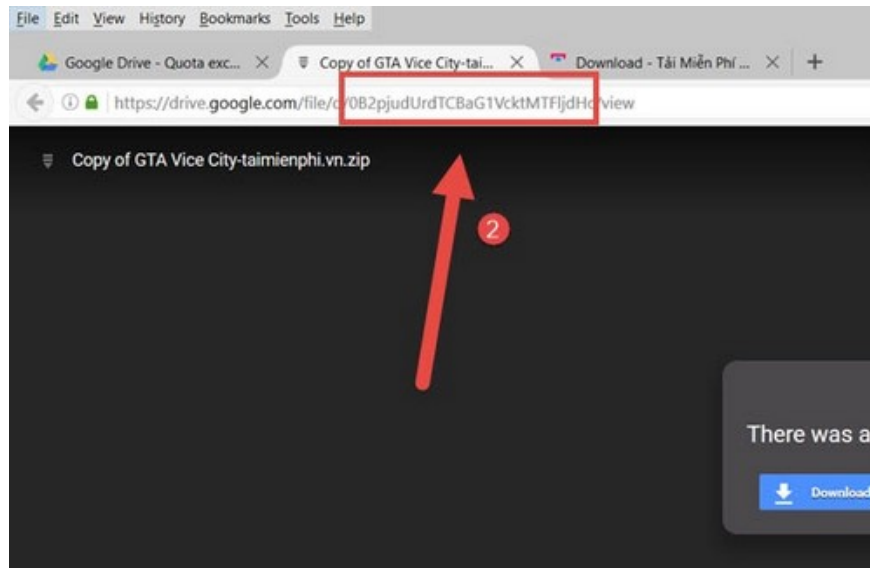


Step 2: Next, **paste** the copied text before the '/view' characters and **press Enter**. See the example below.

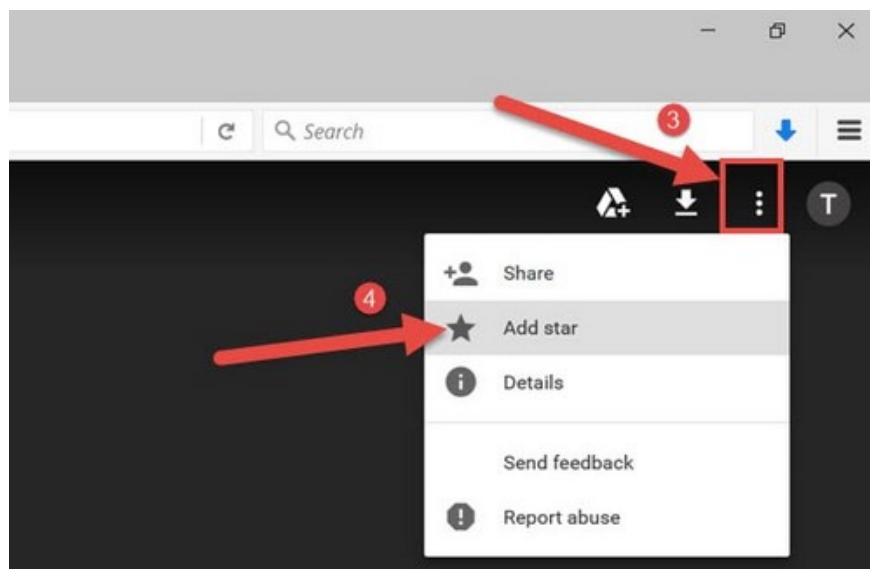
For example: if we have the path: `drive.google.com/file/d/xxxx/view`, replace `xxxx` with the code you just copied above.

We get: `drive.google.com/file/d/0B2pjudUrdTCBaG1VcktMTFljdHc/view`

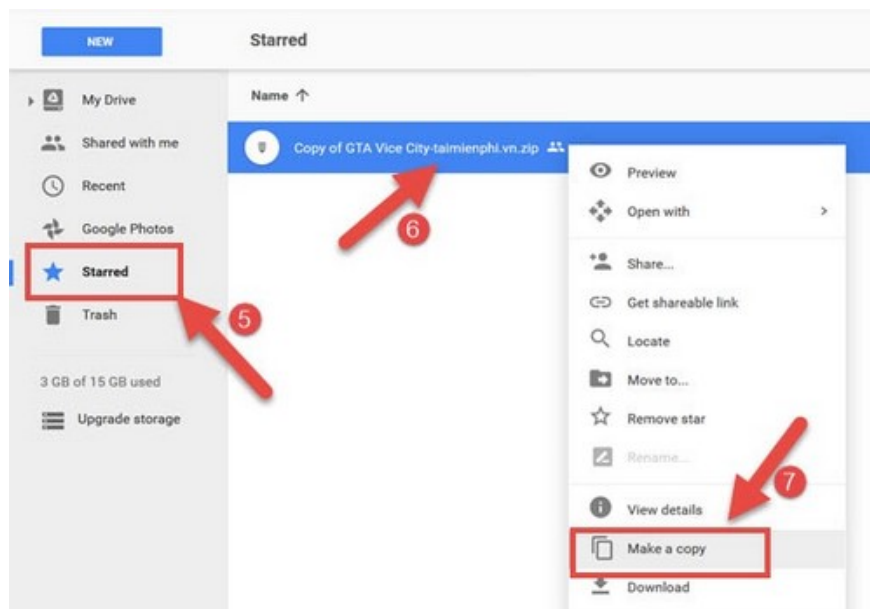
Note: You must be logged into Gmail to use the service and proceed to step 2.



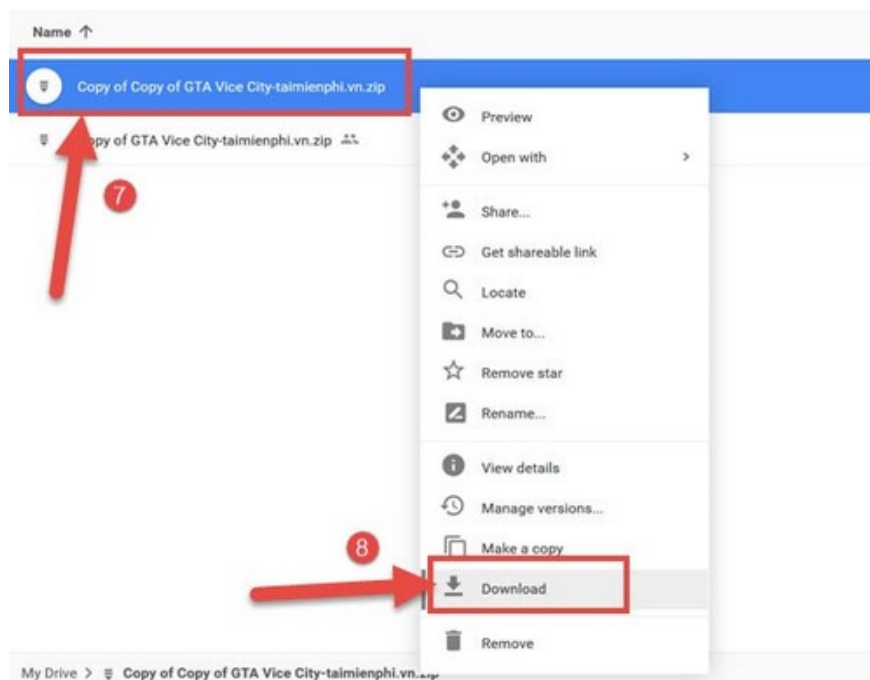
Step 3: Click on the three vertical dots icon, then select **Add Star** to save the file to your Google Drive.



Step 4: Access **HERE** , go to the **Starred** folder , find the file you just added, right-click and select **Make a Copy** .



Step 5: Wait a moment for the file to be created. Once created, click **Download** to download it.



Step 6: And finally, click on "**Download Anyway**" to download the file that exceeded the previous limit.



So you have successfully downloaded the file exceeding the download limit and resolved the download limit error. See?

Taimienphi.vn has provided instructions on how to upload files exceeding the limit on Google Drive. If you are the one sharing the files, simply follow steps 4 onwards to save time.

Besides using Google Drive on the web, you can install the application on your computer to easily synchronize data. This helps to manage files more efficiently. If you want to **disable Google Drive from starting with Windows** to avoid slowing down your computer, you can turn this feature off when you don't need it.

You finished reading the article "**How to fix file upload limit issues on Google Drive, including download limit errors.**" edited by the [TipsMake](#) team. We hope this article has provided you with many useful tech tips and tricks. You can search for similar articles on tips and guides. Thank you for reading and for following us regularly.