

How to fix explorer.exe error on Windows 10

How to fix explorer.exe error on Windows 10. Explorer.exe is a Windows file management program that helps users to access folders and files in Windows and organize and classify folders and files according to criteria such as Name, size, creation date ... Suddenly one day explorer.exe on your Windows 10 'bad'?

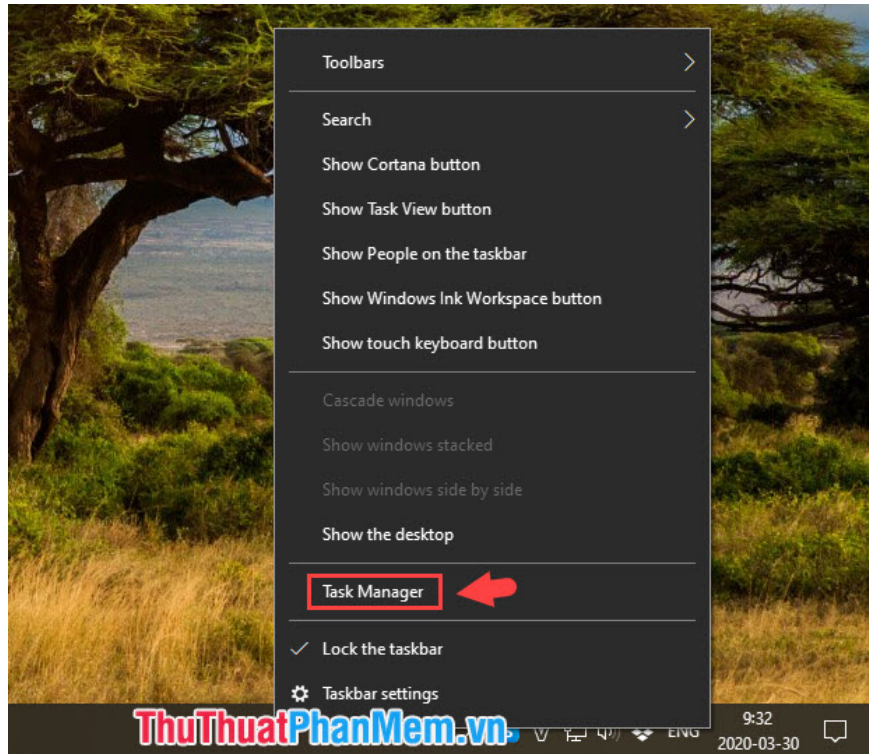
Explorer.exe is a Windows file management program that allows users to access folders and files in Windows and organize and classify folders and files according to criteria such as Name, size, creation date. . Suddenly one day explorer.exe on your Windows 10 'bad' what about? Don't worry and try the solutions in the following article!



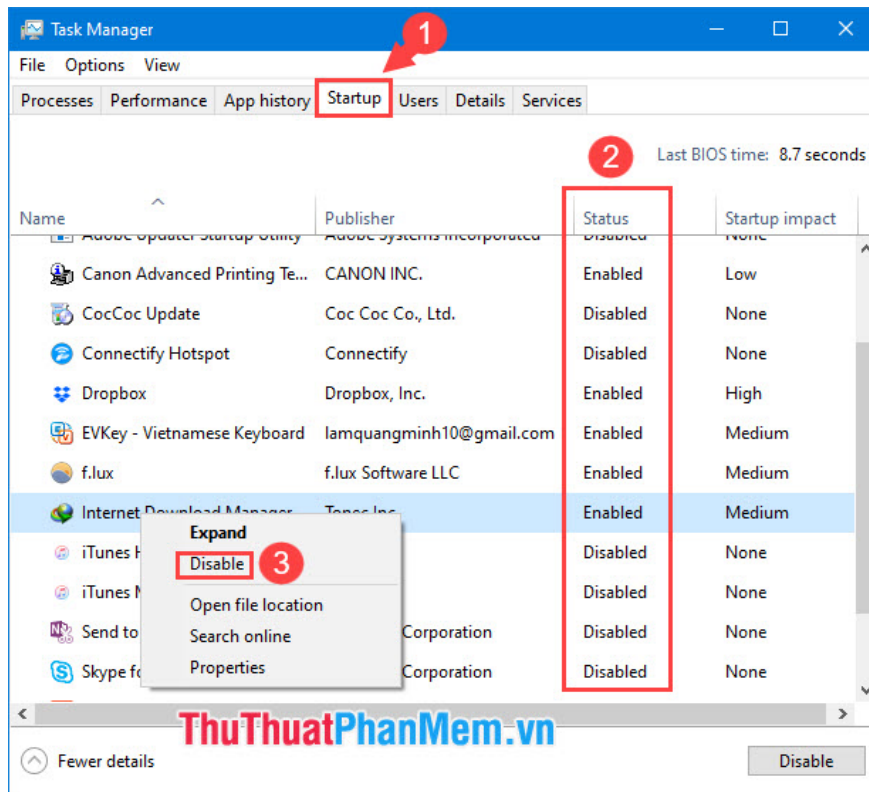
1. Turn off programs that start with Windows

Programs that start with Windows can cause conflicts with Explorer.exe. Find ways to turn them off as follows:

Step 1: Right-click the **taskbar** => **Task Manager** .

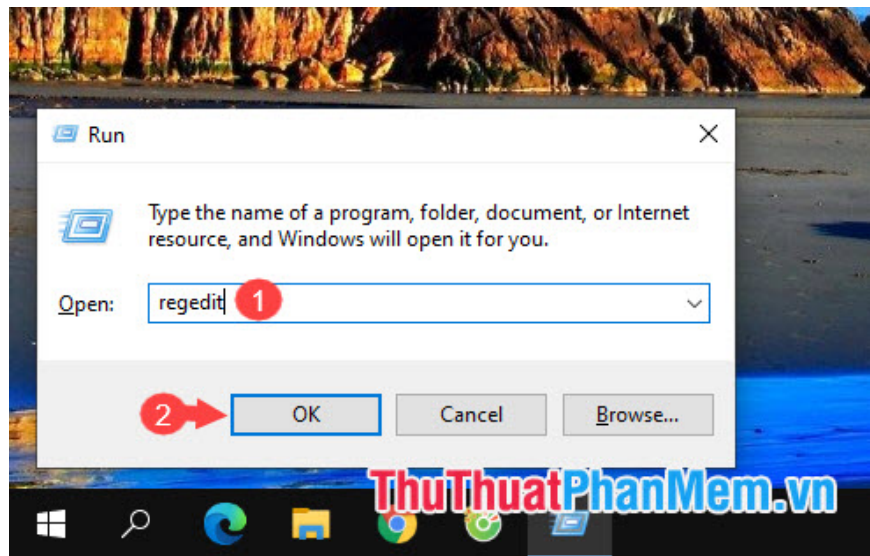


Step 2: Go to the **Startup** tab (1) => search in **Status** (2) which applications are **Enabled** and right-click on that application => select **Disabled** (3) .



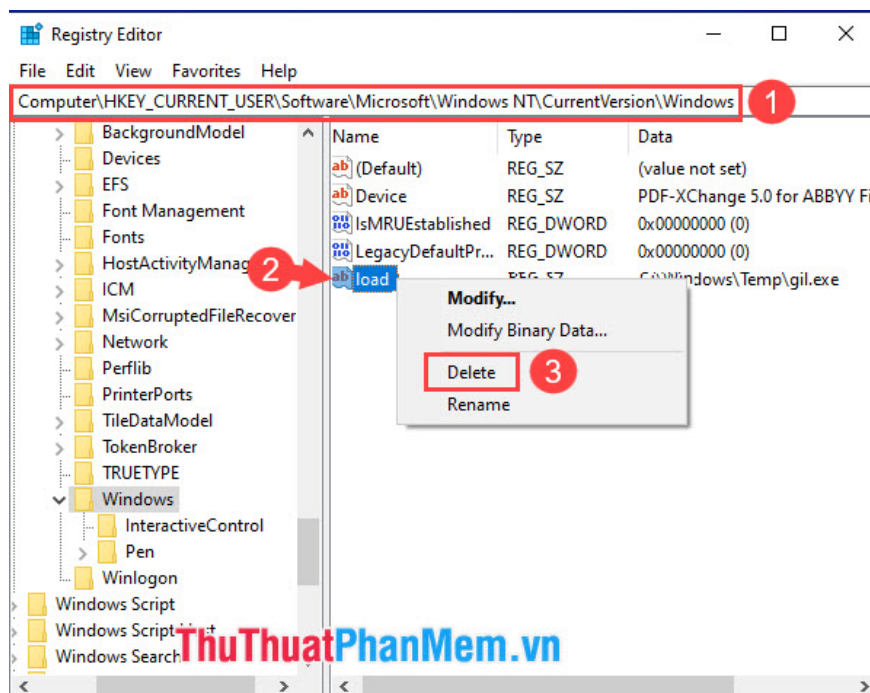
2. Edit in the Registry

Step 1: You open the dialog box **Run** with the shortcut **Windows + R** . Next, you enter the keyword **regedit** (2) => **OK** (3) .

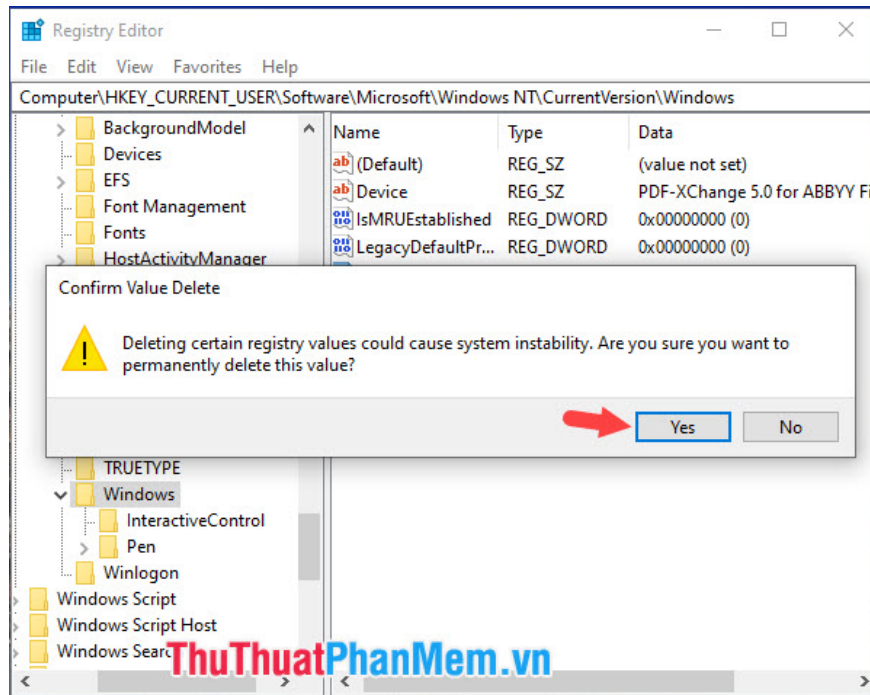


Step 2: You access the registry key under the path **HKEY_CURRENT_USER\Software\Microsoft\Windows NT\CurrentVersion\Windows**

Then you look for the lock **load** and right click => choose **Delete** .

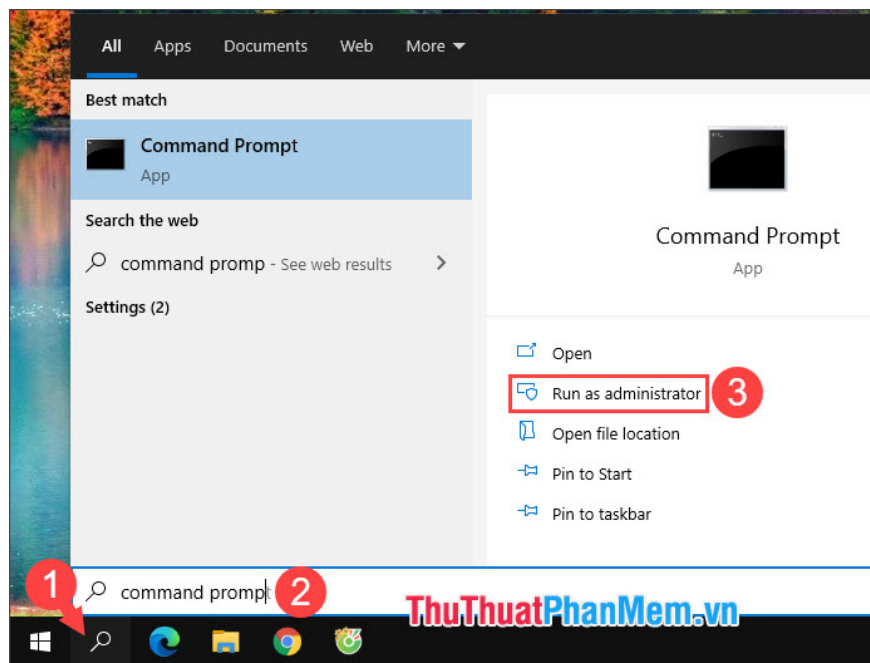


If the message as shown below then click **Yes** is finished.



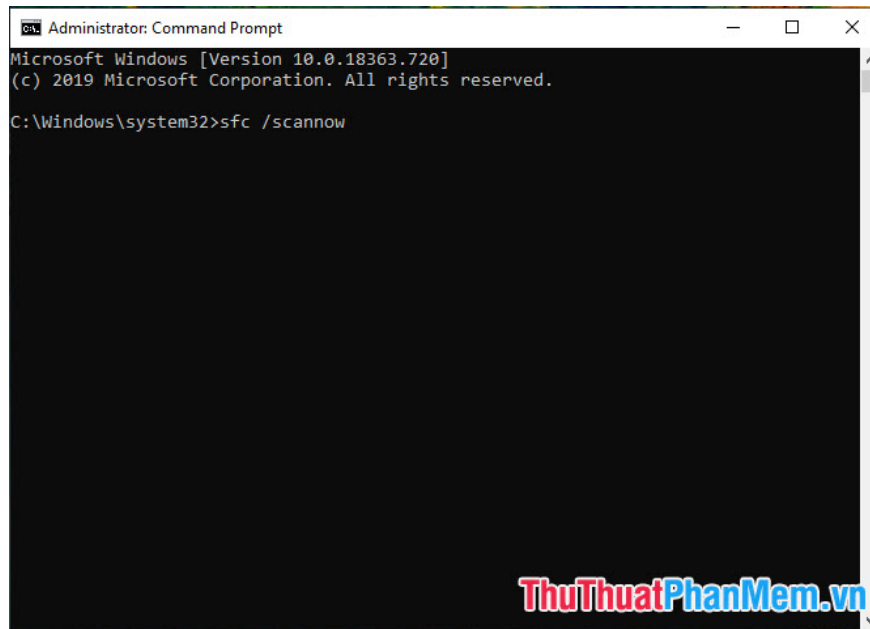
3. Use the Scannow command in the Command Prompt

Step 1 : Go to Search (1) => search with keyword **Command Prompt** (2) => **Run as administrator** (3) .



Step 2: Enter the following command and press **Enter** .

sfc / scannow

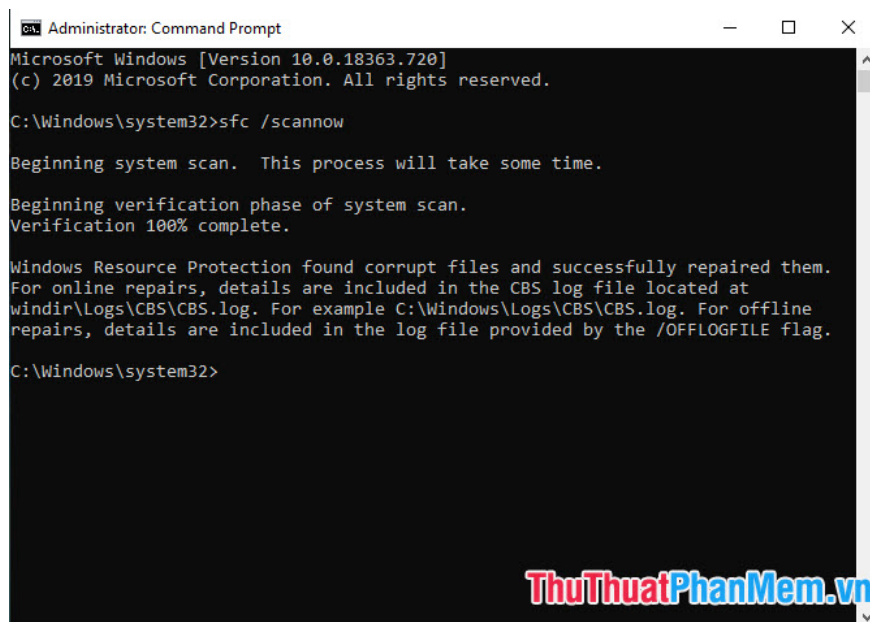


```
Administrator: Command Prompt
Microsoft Windows [Version 10.0.18363.720]
(c) 2019 Microsoft Corporation. All rights reserved.

C:\Windows\system32>sfc /scannow
```

ThuThuatPhanMem.vn

After that, the process of checking and fixing errors will take place. Please restart your computer to check if the Explorer.exe error still exists!



```
Administrator: Command Prompt
Microsoft Windows [Version 10.0.18363.720]
(c) 2019 Microsoft Corporation. All rights reserved.

C:\Windows\system32>sfc /scannow

Beginning system scan. This process will take some time.

Beginning verification phase of system scan.
Verification 100% complete.

Windows Resource Protection found corrupt files and successfully repaired them.
For online repairs, details are included in the CBS log file located at
windir\Log\Logs\CBS\CBS.log. For example C:\Windows\Log\Logs\CBS\CBS.log. For offline
repairs, details are included in the log file provided by the /OFFLOGFILE flag.

C:\Windows\system32>
```

ThuThuatPhanMem.vn

With the share on how to fix Explorer.exe error on Windows 10, readers can follow and fix the error quickly. Good luck!

You finished reading the article "**How to fix explorer.exe error on Windows 10**" edited by the [TipsMake](#) team. We hope this article has provided you with many useful tech tips and tricks. You can search for similar articles on tips and guides. Thank you for reading and for following us regularly.