

# How to fix errors when using iSpring Suite

In the process of using iSpring Suite to write lesson E-learning will inevitably contain some lesson design errors.

iSpring Suite is extremely familiar software for preparing E-learning lectures. With iSpring Suite users can record, record videos, create exercises like creating multiple choice exercises on iSpring Suite. Especially, the software is integrated with PowerPoint in the form of add-in, making it easier for teachers to write lessons

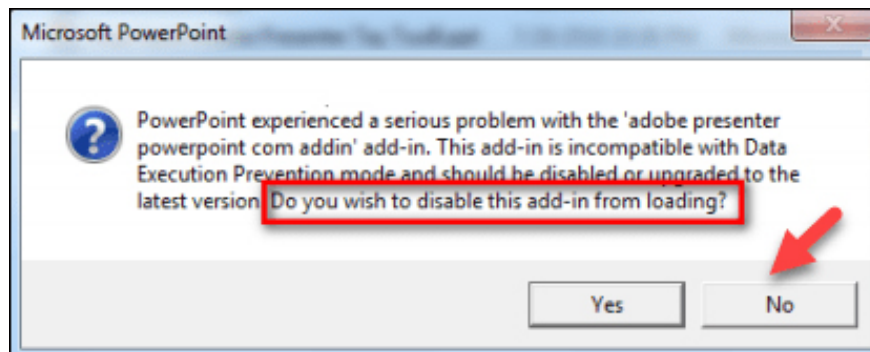
And in the process of using iSpring Suite, having some errors is inevitable, leading to PowerPoint problems. The following article will guide you to fix some common errors when using iSpring Suite.

1. Instructions on how to fix Microsoft Office 365 errors
2. Fix 'Something went wrong' error on Office 2013
3. 10 ways to recover corrupted Excel files

## 1. Hidden iSpring Suite error on PowerPoint

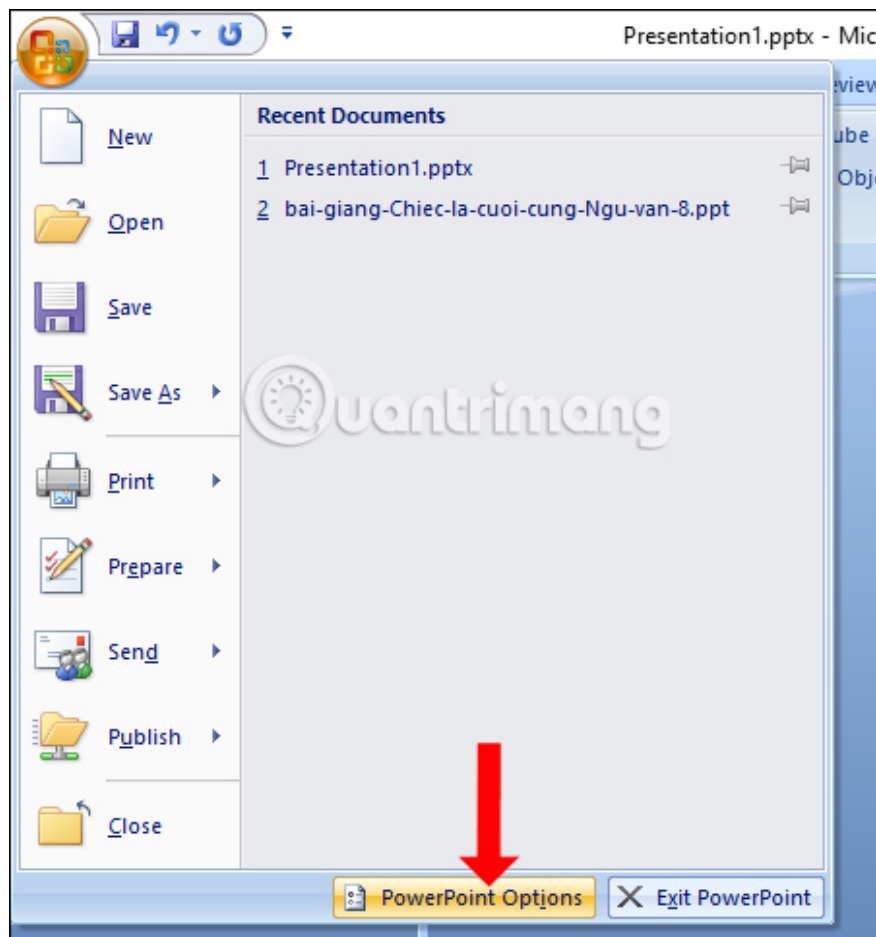
Some computers have weak configuration, so installing iSpring Suite often causes PowerPoint errors. This will display an error message as shown below.

Now you need to press No to use iSpring Suite. In case of accidentally clicking Yes, you can fix the following steps.



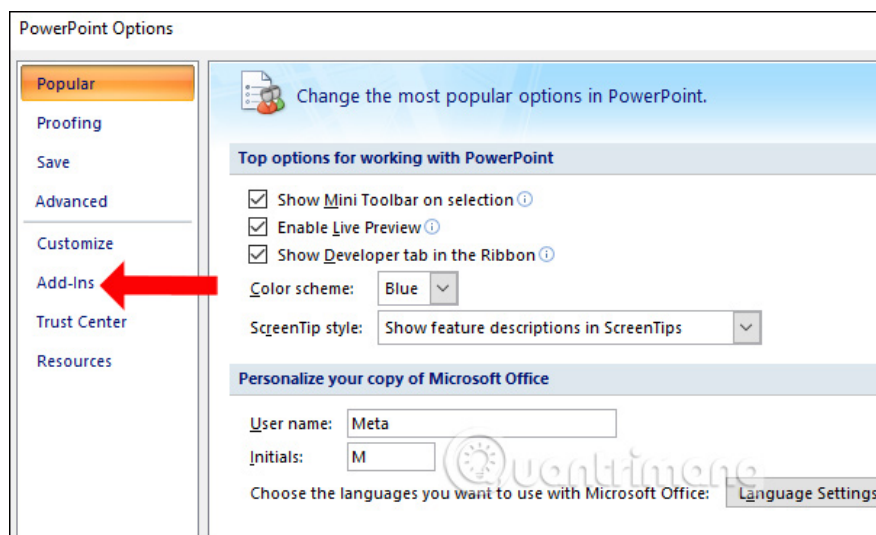
### Step 1:

In the PowerPoint interface, click on **the Office icon** and select **PowerPoint Options** .

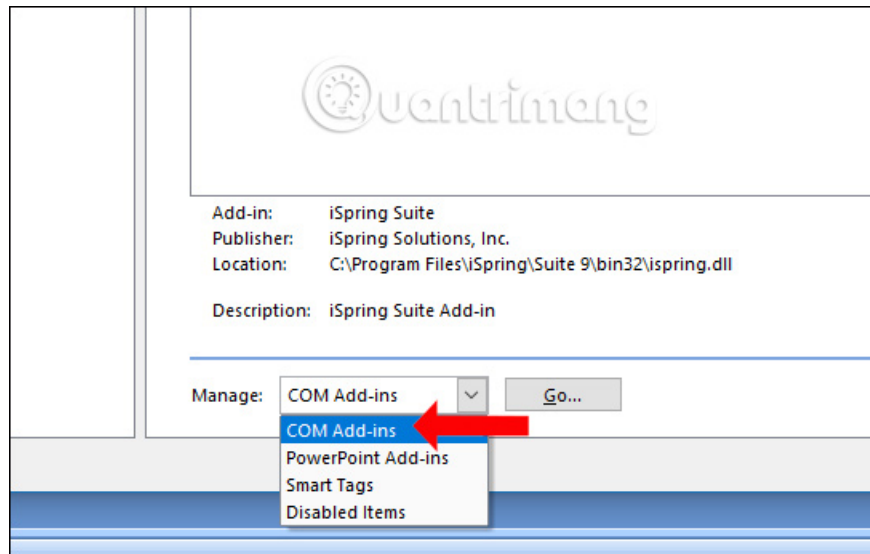


## Step 2:

Displaying the new interface click on **the Add-Ins item** in the left corner outside the interface.

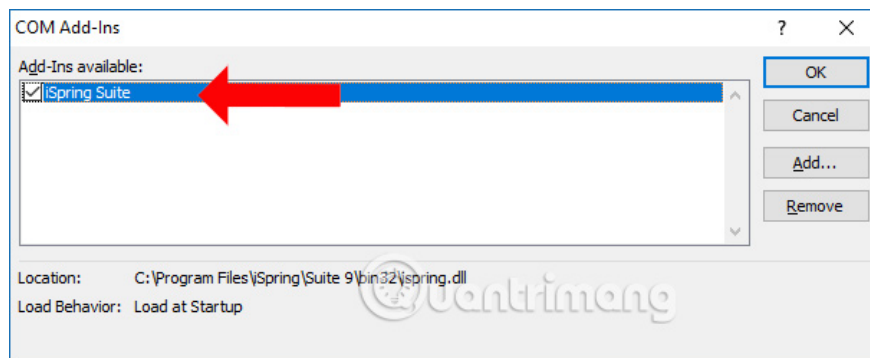


In the next interface, **Manage** select **COM Add-ins** and then click **the Go button** .

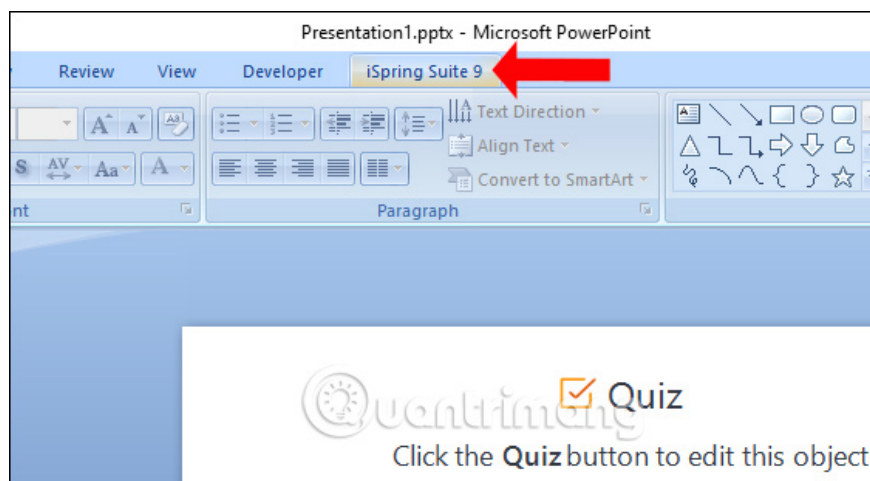


### Step 3:

In this interface, select the **iSpring Suite** to add add-in to PowerPoint and click OK to use.



When you return to the PowerPoint interface, you will see the iSpring Suite tool displayed for use.



## 2. Error reporting iSpring Suite version

With the iSpring Suite version error, **iSpring Suite components** will be displayed . **Please re - install the product .**

This error is because PowerPoint version does not install 32-bit or 64-bit version, coincides with 32-bit Windows and 64-bit Windows operating system. The fix is ??to remove the current version and reinstall the new version.

In addition to other errors when using iSpring Suite, just save the article and exit PowerPoint and reopen it to fix the error.

Above are 2 common errors when using iSpring Suite on the computer. If your computer does not have a high profile, when composing a lesson on iSpring Suite, you should do it step by step and slowly, you should not click the mouse continuously, causing lag of the program.

See more:

1. Fix error of Copy Paste command not working in Word, Excel (2007, 2010)
2. Fix word sticking errors in Word 2007
3. How to fix Vietnamese typing errors in Word, Excel

Hope this article is useful to you!

You finished reading the article "**How to fix errors when using iSpring Suite**" edited by the [TipsMake](#) team. We hope this article has provided you with many useful tech tips and tricks. You can search for similar articles on tips and guides. Thank you for reading and for following us regularly.