

How to fix errors on Gmail

While using Gmail we often encounter system-related errors that make us unable to access Gmail. In this article, Software Tips will guide you how to fix errors on Gmail.

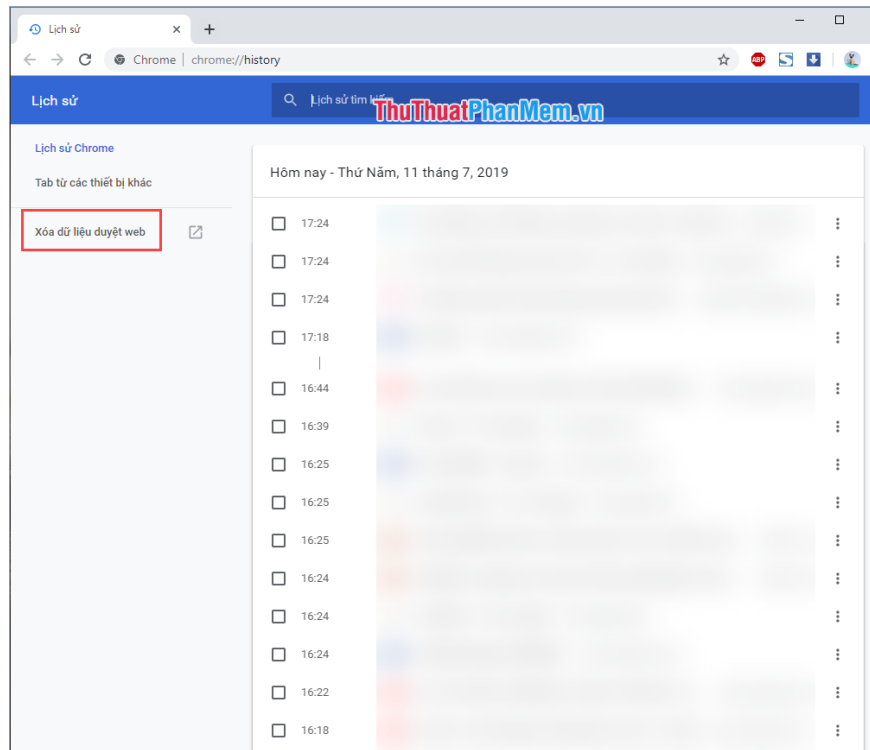
Gmail is a Google email service that is widely used today. With useful features and maximum support for users, Gmail quickly captures the affection of many people. But sometimes during use we often encounter errors related to the system that makes us unable to access Gmail. In this article, Software Tips will guide you how to fix errors on Gmail.



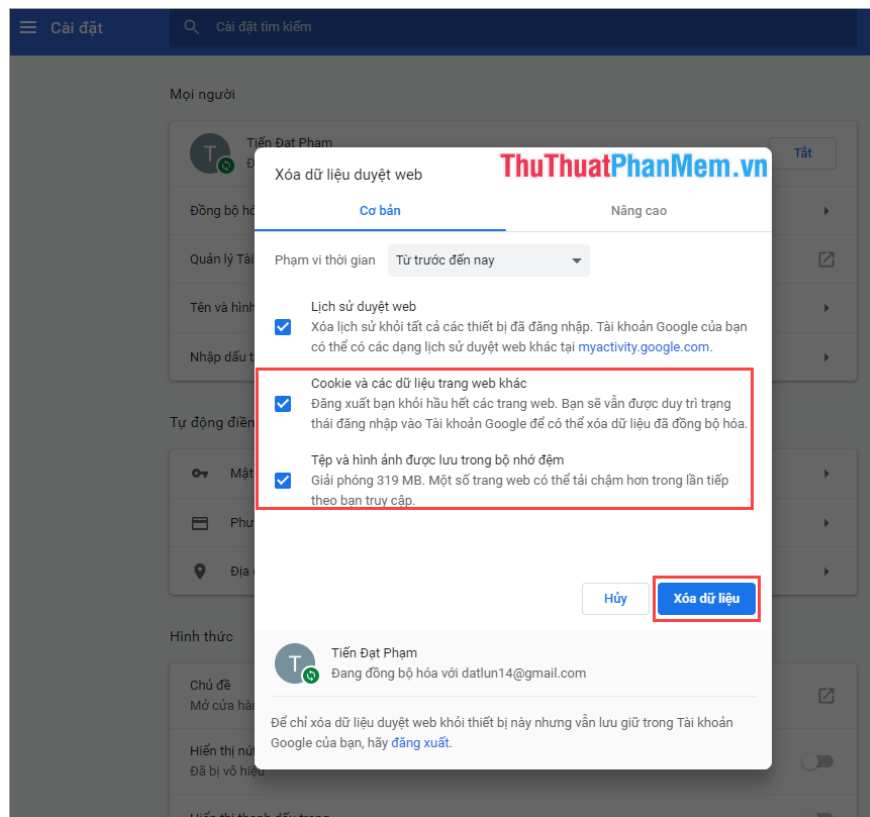
Method 1. Clear data in the browser

One of the quickest and most effective ways is to clear the browser cache that you are using. This way, all data related to the previous Web pages will be cleaned and initialized from scratch.

Step 1: You open the **History** on the Web browser in the option or pressing **Ctrl + H** . And then you select **Clear browsing data**.



Step 2: You proceed to mark **Cookies and other Web site data, Files and images are cached** . Then you click **Delete data** .

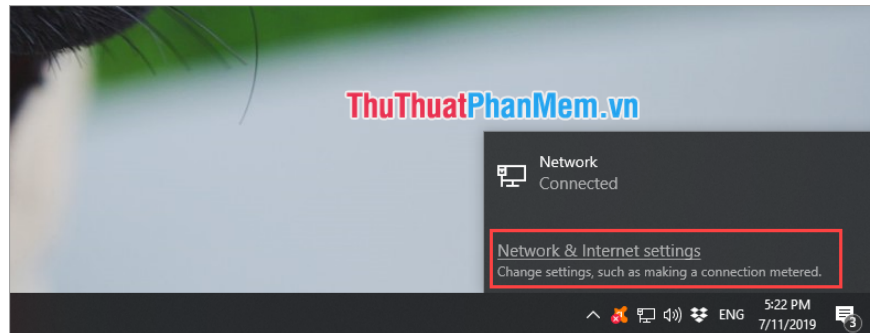


After deleting the data, you proceed to access Gmail to use.

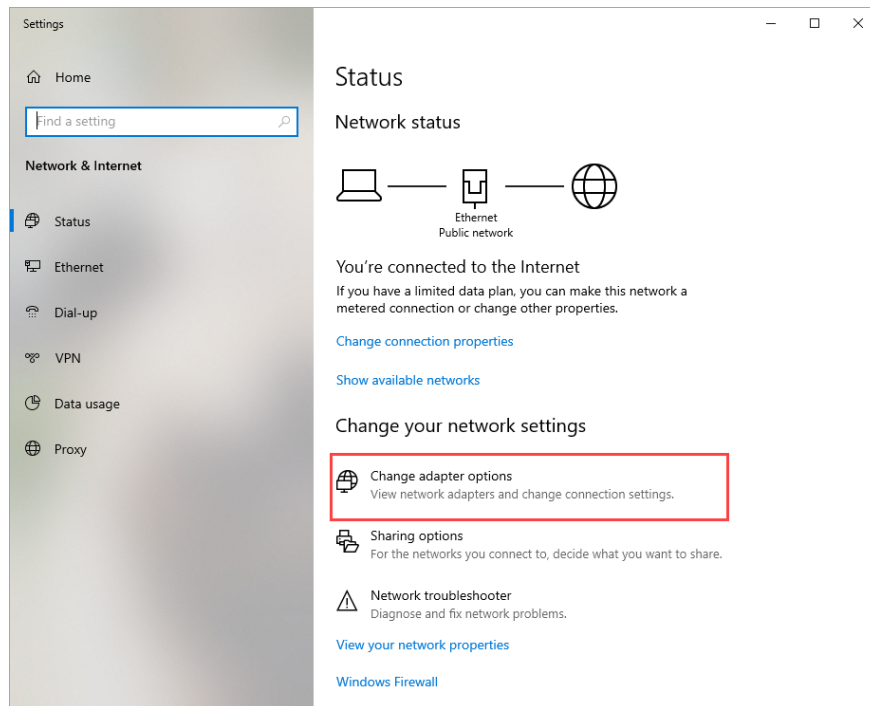
Method 2. Check the network connection

Network computers over a long period of use will have a lot of bandwidth transmitted / sent back. Too much bandwidth also causes data jams between the user and the service provider. You need to restart the network to clear bandwidth.

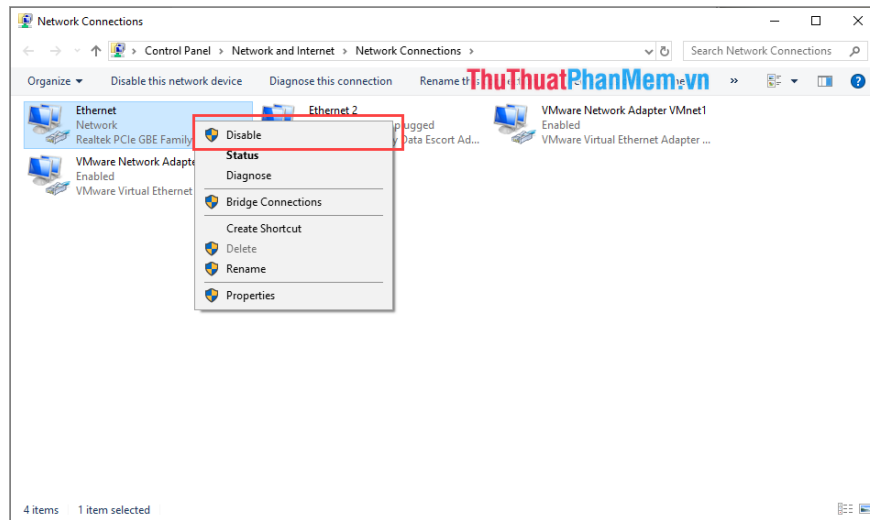
Step 1: Click on the network icon on the **Taskbar** and select **Network & Internet Settings** .



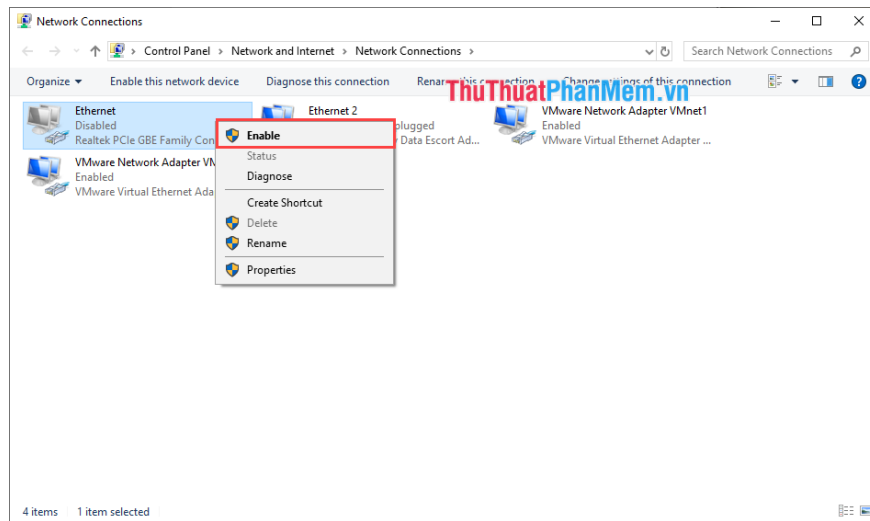
Step 2: Then you select **Change adapter options** to open the network connection .



Step 3: You proceed Right-click on **Ethernet** and select **Disable** to disable.



Step 4: Right-click **Ethernet** and select **Enable** to restart the network.

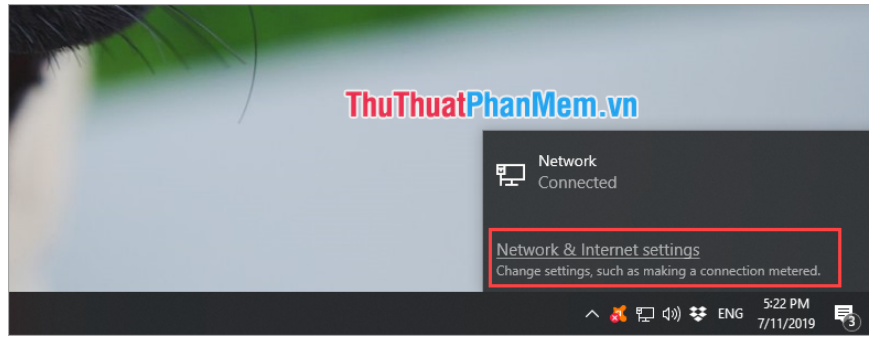


So the process of cleaning bandwidth on your computer has been successful. Have you revisit Gmail to try again.

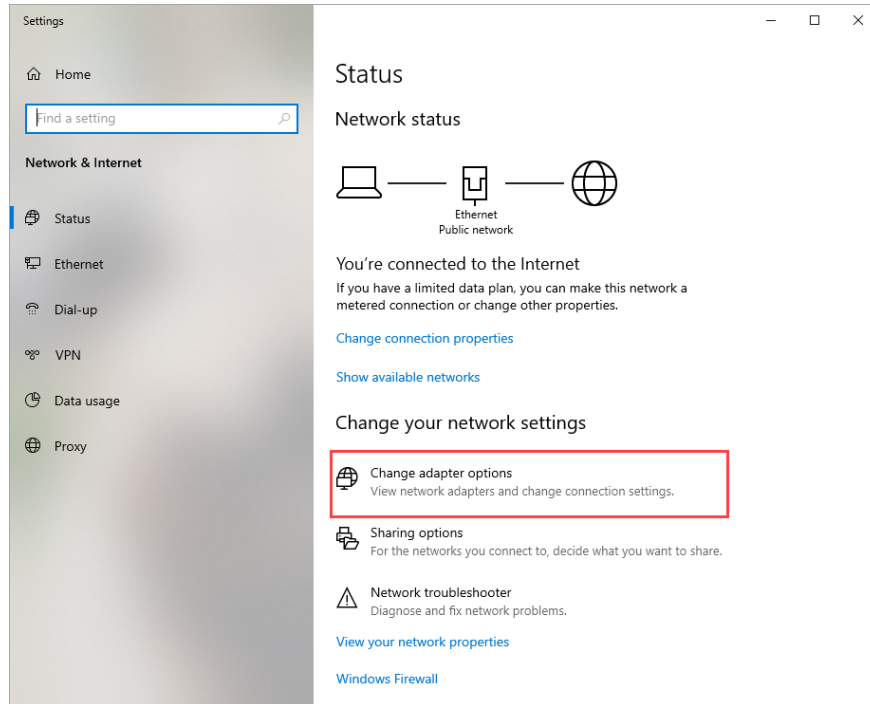
Method 3. Use Google DNS

Gmail is a Google service, so using DNS from Google will help you solve this problem.

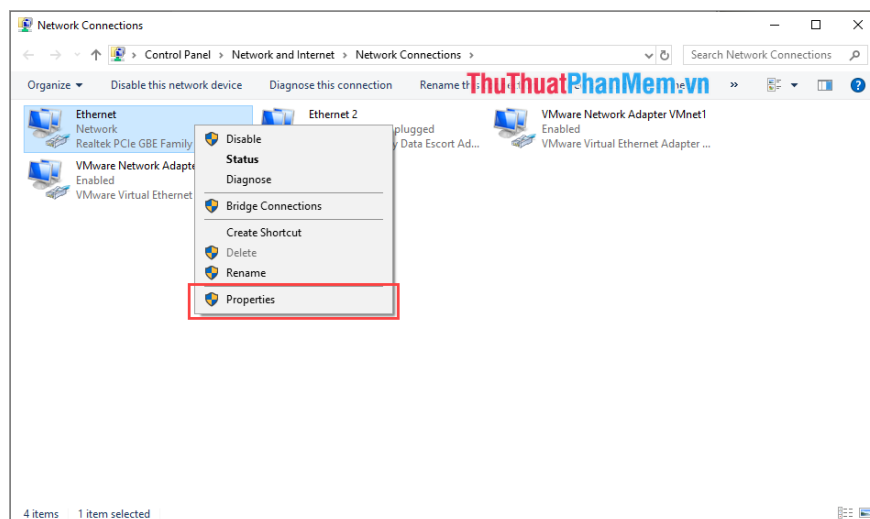
Step 1: Click on the network icon on the **Taskbar** and select **Network & Internet Settings**.



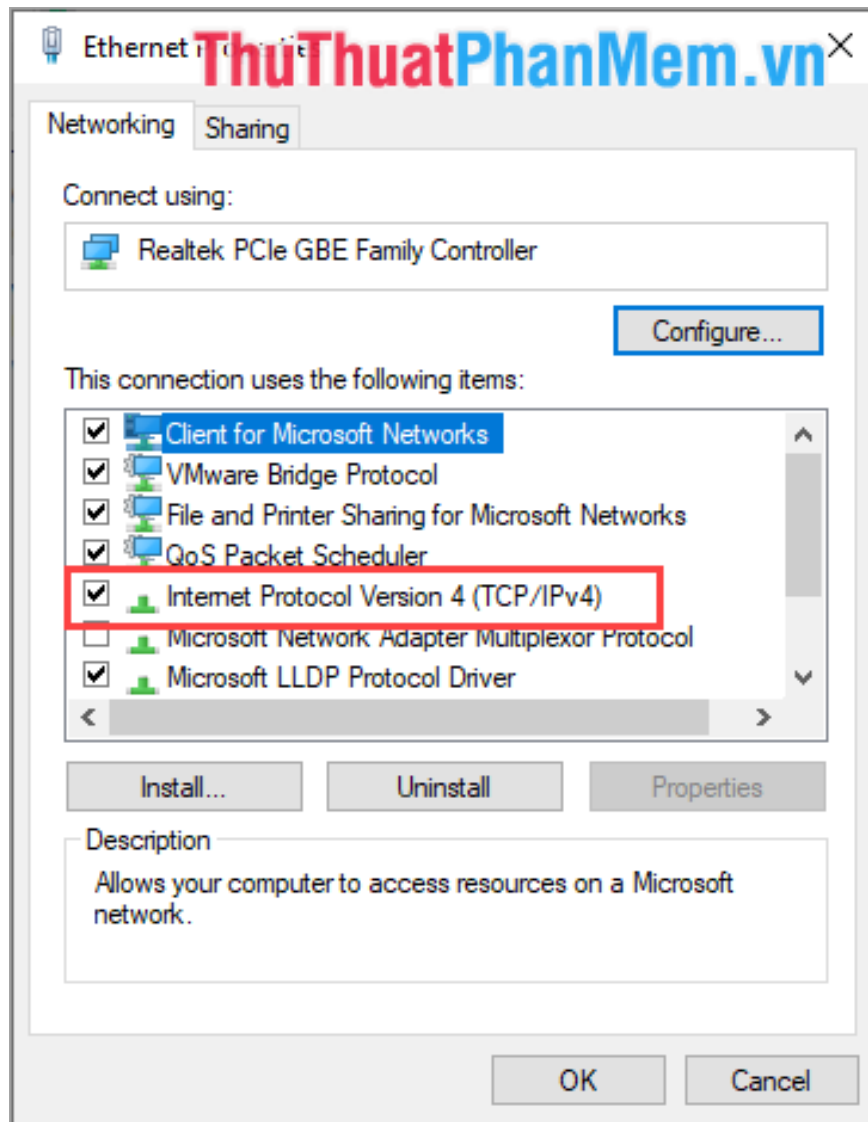
Step 2: Then you select **Change adapter options** to open the network connection.



Step 3: You proceed Right-click **Ethernet** and select **Properties** .



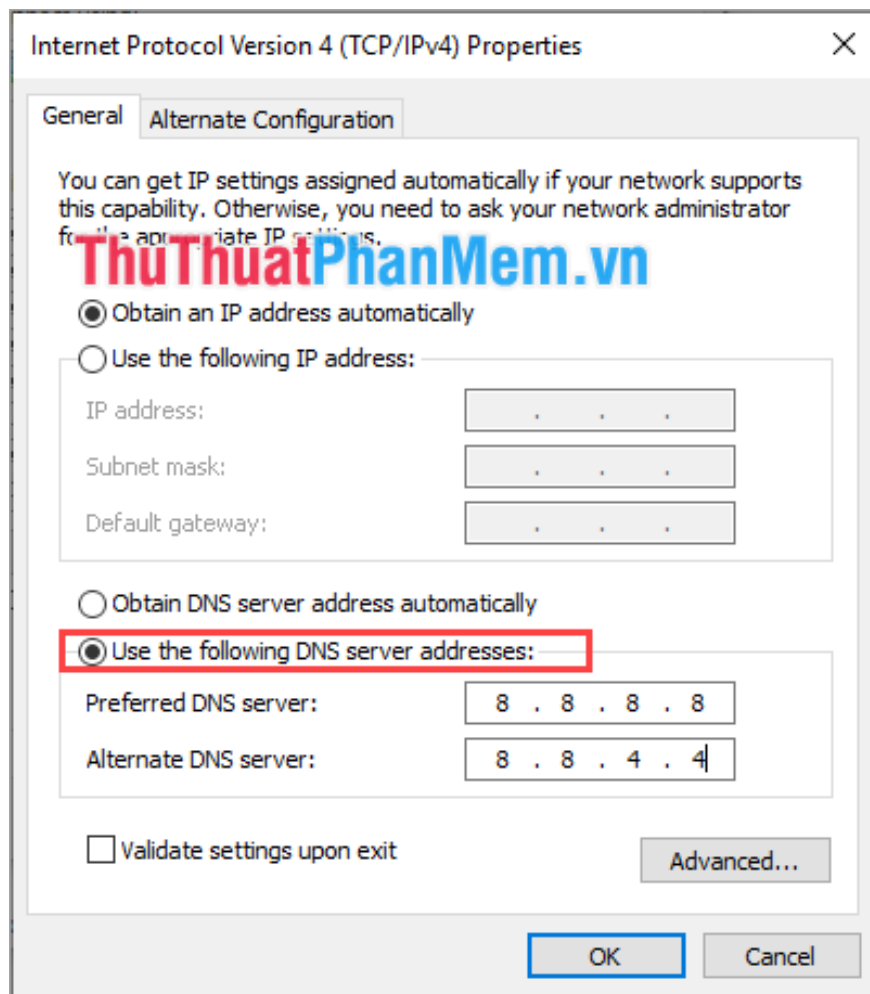
Step 4: The **Properties** window appears, proceed to select **Internet Protocol Version 4 (TCP / Ipv4)** and double click to open.



Step 5: Continue to select **Use the following DNS server addresses** and enter the following:

8.8.8.8

8.8.4.4



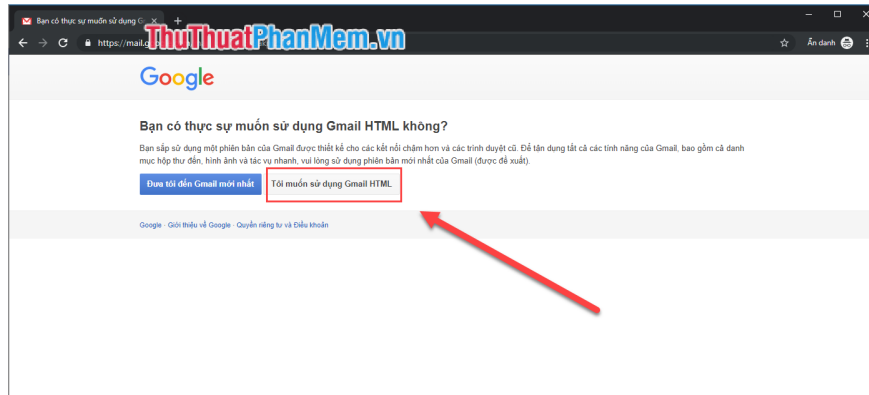
Then click **OK** and access retry Gmail.

Method 4. Use Gmail Mobile version

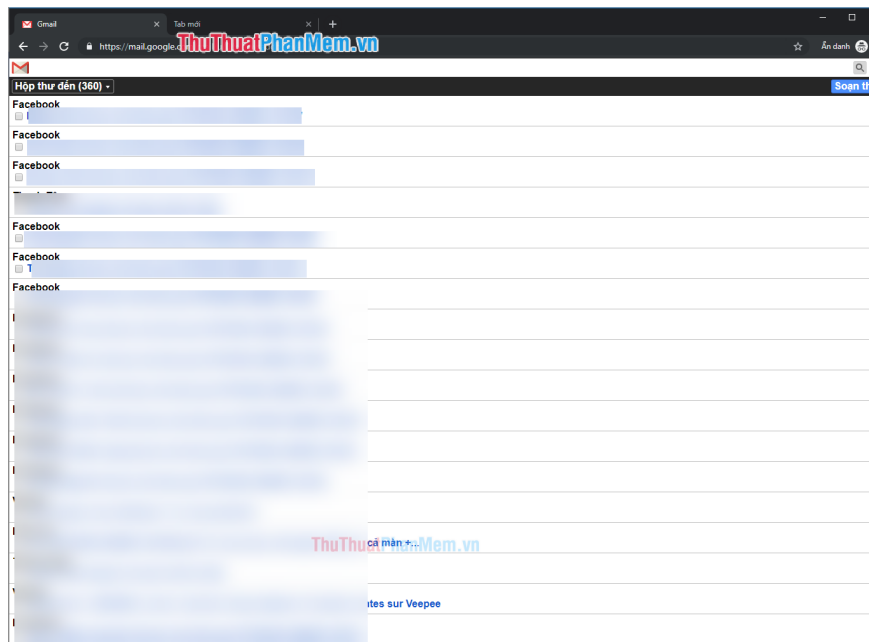
With every Web site, manufacturers always make a version for Mobile Web. On the computer we can still access it.

Step 1: You proceed to access the link below to use <http://m.gmail.com>

Then you need to login, when finished logging in you select **I want to use Gmail HTML** .



So you have access to your Gmail. Using Gmail HTML is a bit inconvenient, but it's the best solution today.



Thus, Software tips have shown you how to access Gmail when there are errors. Good luck!

You finished reading the article "**How to fix errors on Gmail**" edited by the [TipsMake](#) team. We hope this article has provided you with many useful tech tips and tricks. You can search for similar articles on tips and guides. Thank you for reading and for following us regularly.