

# How to fix errors cannot open Windows Defender on Windows 7/8/10

Windows Defender is one of the most effective anti-virus, malware, malware, spyware programs ... and protects your computer safely. Here are some ways to fix Windows Defender that cannot be opened in Windows 7/8/10

Windows Defender is one of the most effective anti-virus, malware, malware, spyware programs . and protects your computer safely. This is a free program that Microsoft provides for Windows users.

However, in some cases when users open Windows Defender, there is often an error that cannot open the program. So the reason why can't open Windows Defender and how to fix this error. Please refer to the article below.

If your computer does not have Windows Defender installed, you can download the program and install it here:

1. 32-bit version.
2. 64-bit version.

## How to fix errors cannot open Windows Defender on Windows

1. 1. Remove another antivirus program
2. 2. Change the date and time settings on Windows
3. 3. Update Windows
4. 4. Check the file system
5. 5. Perform Clean boot computer
6. 6. Restart the Security Center Service
7. 7. Change Group policy
8. 8. Modify the registry
9. 9. Some other remedies

### 1. Remove another antivirus program

If it detects that 3rd party applications, software, and antivirus programs are installed on your computer, Windows Defender will turn itself off. Windows is designed to detect the presence of installed security software.

However, one of the problems that users often encounter when installing multiple security software on the computer often cause conflicts with these software and even cause many problems such as crash, closing errors. regular tape .

Therefore, in order to avoid this situation, Windows Defender will automatically turn itself off when it detects that another security program is installed on your computer.

In addition, Windows Firewall is the reason Windows Defender is not working. So in this case if you want Windows Defender to work, you must uninstall the 3rd party software, applications, antivirus programs and reboot your system.

Normally, users may not be able to identify and should not install security software. When you buy a new computer, or a new laptop, usually these computers, this laptop will install security software like Norton, McAfee, but these are just trial versions.

After you install applications such as Flash or Java, the program will notify you to remove programs, security software for free. Once you have removed these applications, Windows Defender will automatically open again.

- Press **Windows + Q** key combination to open the Search bar of Charm.

- Enter **Windows Defender** in the Search frame and press **Enter** .

- On the Windows Defender interface, click **Settings** and make sure that the **Turn on real time protection** option option is checked.

Also, when uninstalling third-party antivirus solutions using the **Uninstall** option from **Control Panel** , it may not be possible to delete all related files and these files prevent Windows Defender from running. You can use software removal tools to completely remove antivirus software on your computer.

1. Remove "rooted" programs that have not been removed completely on Windows 7, XP

This uninstall application will delete the selected application and delete the files and registry entries associated with the application. Therefore, the selected application will be completely deleted.

## **2. Change the date and time settings on Windows**

Incorrect date and time settings on Windows 8 could be the cause of the Windows Defender error not working properly. In this case, you must check and reset the correct date and time so that Windows Defender will work again.

1. How to change hours, days, months in Windows 10?

## **3. Update Windows**

One of the most important causes of Windows Defender failure is because Windows does not update. In this case, you just need to run Windows Updates, then update Windows Defender to make the application work better.

## **4. Check the file system**

The System File Checker tool will repair corrupted system files. Use this tool to check if Windows Defender is broken. To do this, proceed with the SFC scan according to the steps below:

**Step 1** : Press **Windows + X** key to open the Start menu, select **Command Prompt (Admin)** or **PowerShell (Admin)** from the menu.

Apps and Features

Power Options

Event Viewer

System

Device Manager

Network Connections

Disk Management

Computer Management

Command Prompt

Command Prompt (Admin)

Task Manager

Settings

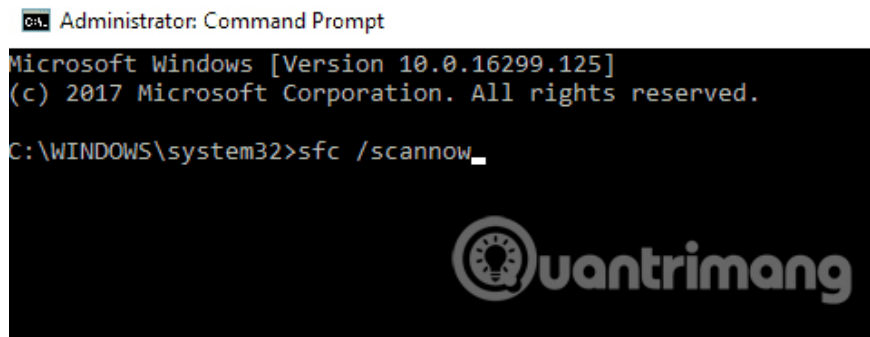
File Explorer



Shut down or sign out >

Desktop

Type the command **sfc / scannow** > press **Enter** > wait for the scan to finish.

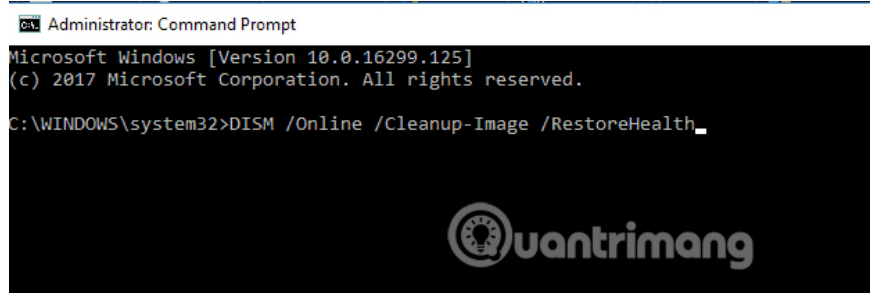


```
Administrator: Command Prompt
Microsoft Windows [Version 10.0.16299.125]
(c) 2017 Microsoft Corporation. All rights reserved.
C:\WINDOWS\system32>sfc /scannow_
```

If you cannot run the SFC scan or the SFC cannot resolve the problem, you can try using the DISM scan instead. To do that, just follow these steps:

**Step 1** . Open Command Prompt as an administrator.

**Step 2** . When the Command Prompt opens, enter **DISM / Online / Cleanup-Image / RestoreHealth** and press **Enter** to run the command.



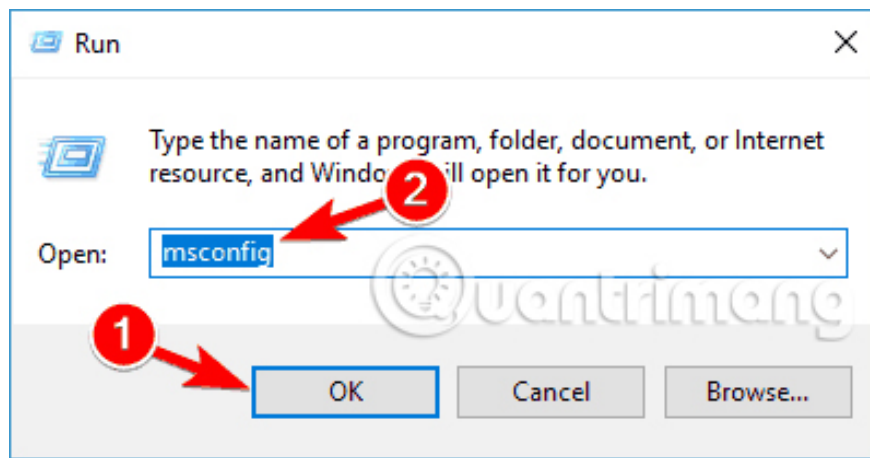
```
Administrator: Command Prompt
Microsoft Windows [Version 10.0.16299.125]
(c) 2017 Microsoft Corporation. All rights reserved.
C:\WINDOWS\system32>DISM /Online /Cleanup-Image /RestoreHealth_
```

This DISM scan may take up to 20 minutes or longer. After finishing checking whether the problem has been fixed or not. If previously unable to run SFC or DISM did not solve the problem, try running SFC again.

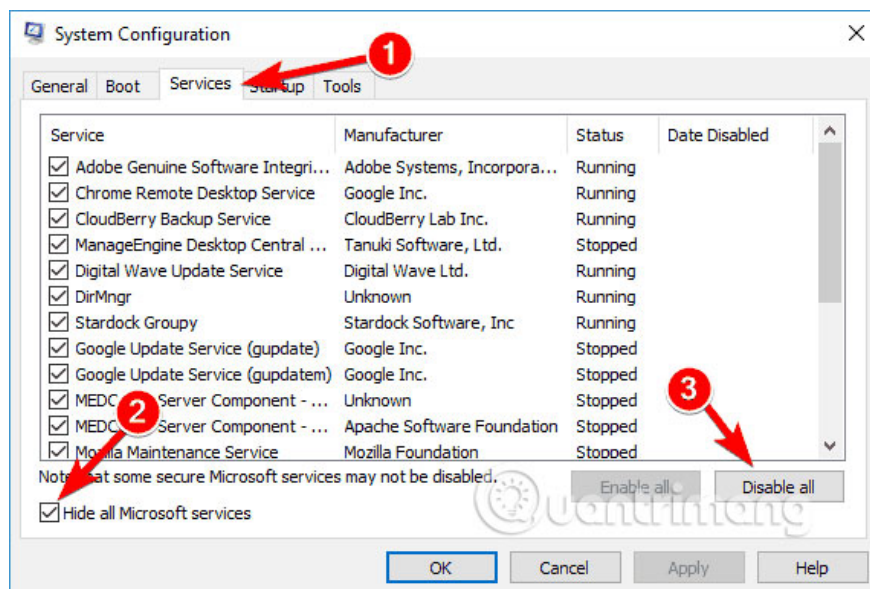
## 5. Perform Clean boot computer

Sometimes third-party applications can interfere with Windows and cause this problem to occur. However, you can find the problematic application by implementing Clean boot. This is quite simple and you can do it by following these steps:

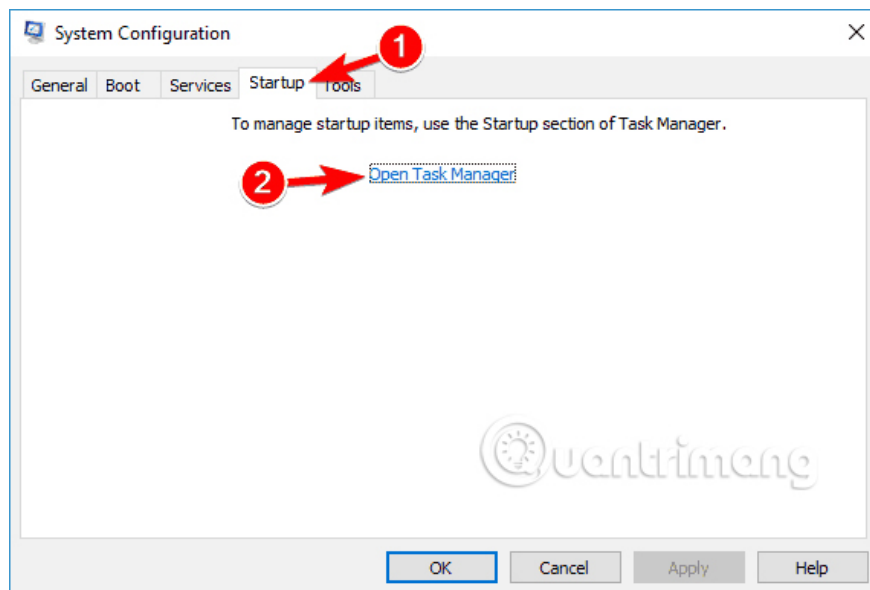
**Step 1** . Press **Windows + R** key and enter **msconfig** , press **Enter** or click **OK** .



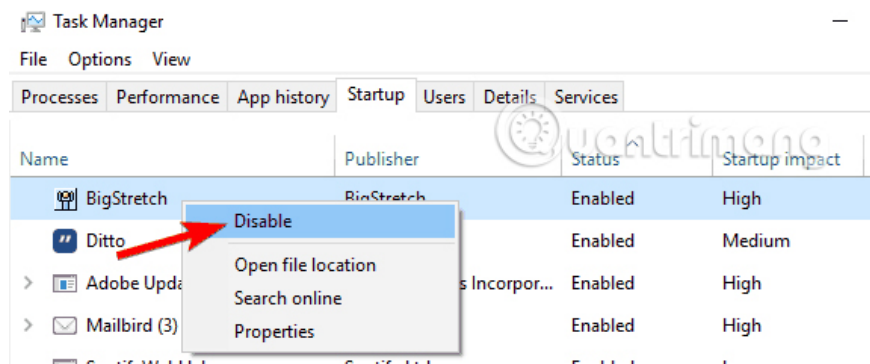
**Step 2** . The System Configuration window will appear, go to the **Services** tab and select **Hide all Microsoft services** . Now click on the **Disable all** button.



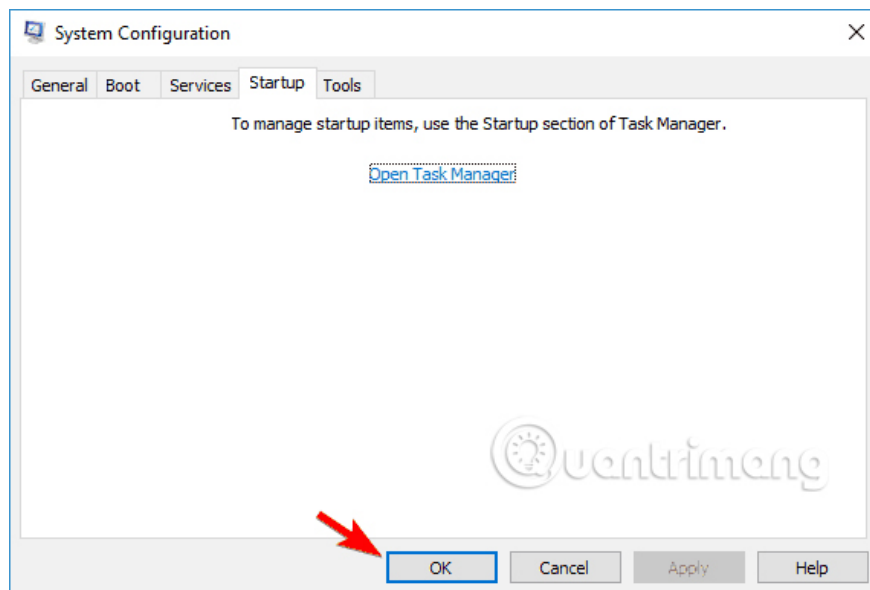
**Step 3** . Navigate to the **Startup** tab and click on **Open Task Manager**.



You should now see a list of startup applications, right click on the first entry in the list and select **Disable** . Repeat this step for all startup applications.



When disabling all startup applications, go back to the **System Configuration** window and click **Apply** and **OK** . Now choose to restart the computer.

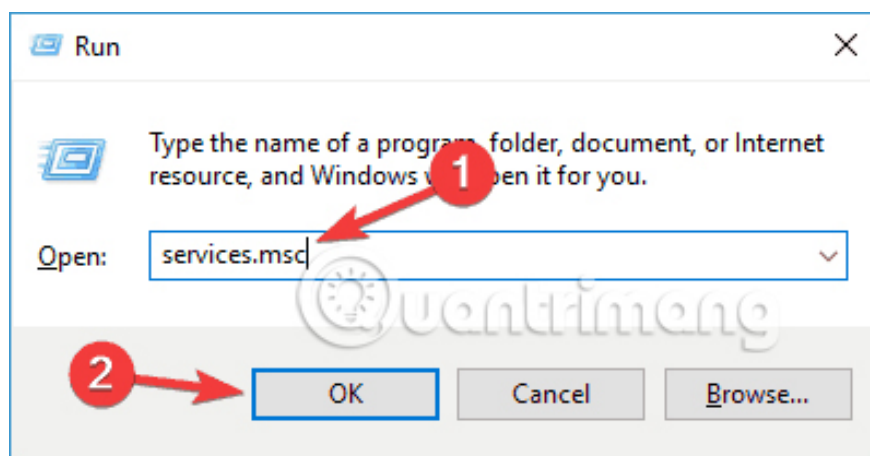


When the computer restarts, if the problem is resolved, one of the disabled applications or services has caused the problem. To find the problem or application, you turn on each application or service until a problem occurs. Then turn off or uninstall the application to solve the problem.

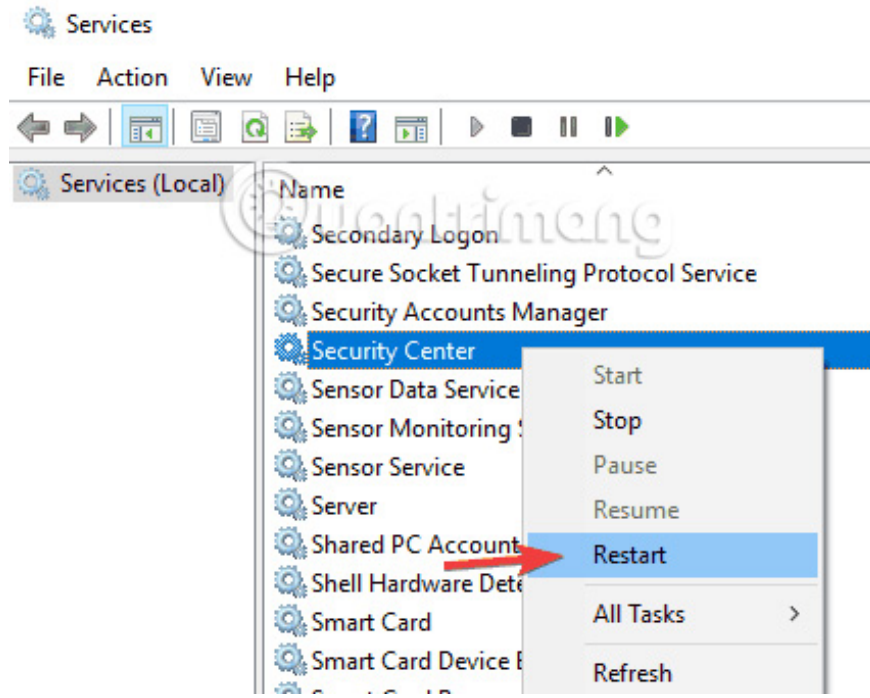
## 6. Restart the Security Center Service

For Windows Defender to work properly, you need to turn on certain services. If those services are not running properly, Windows Defender will not be able to open. However, you can start the necessary services by doing the following:

**Step 1.** Press **Windows + R** key > start **Run**, type **services.msc** > press Enter or click **OK** .



In Services, search for **Security Center** , right-click **Security Center** > click **Restart** .

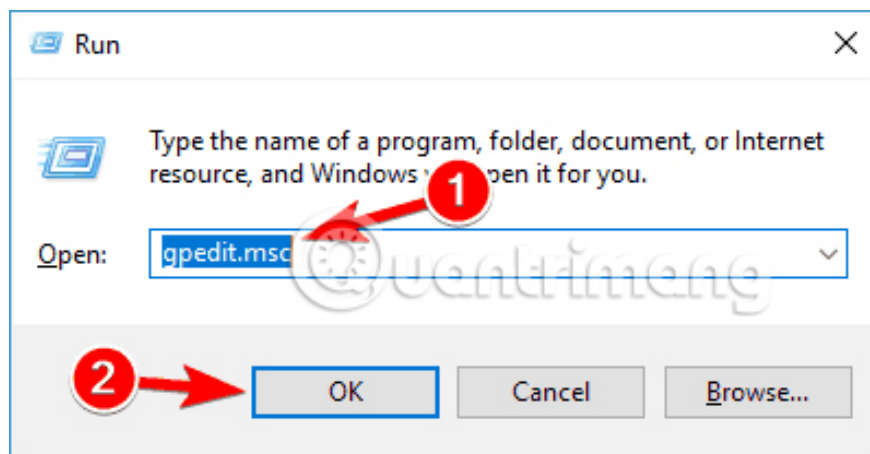


When restarting the required services, check to see if the problem with Windows Defender has been resolved.

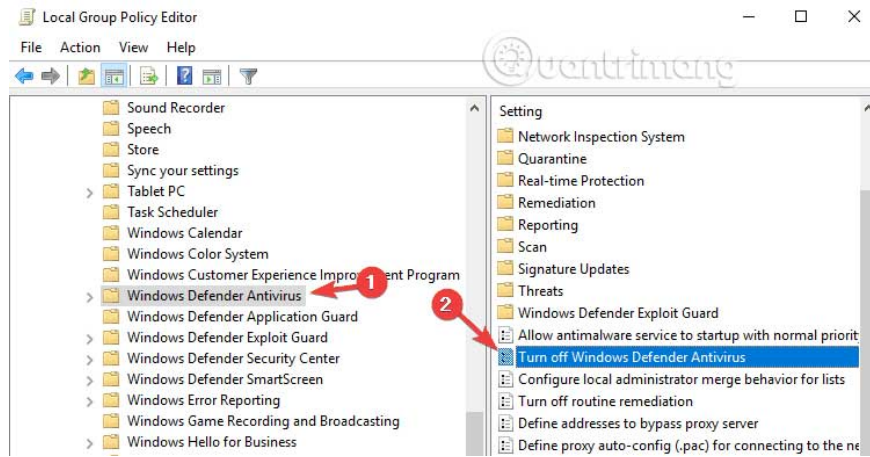
## 7. Change Group policy

Sometimes Windows Defender does not open because it is disabled by group policy. If this is the cause of Windows Defender, you can easily fix the problem by changing the group policy. Follow the steps below:

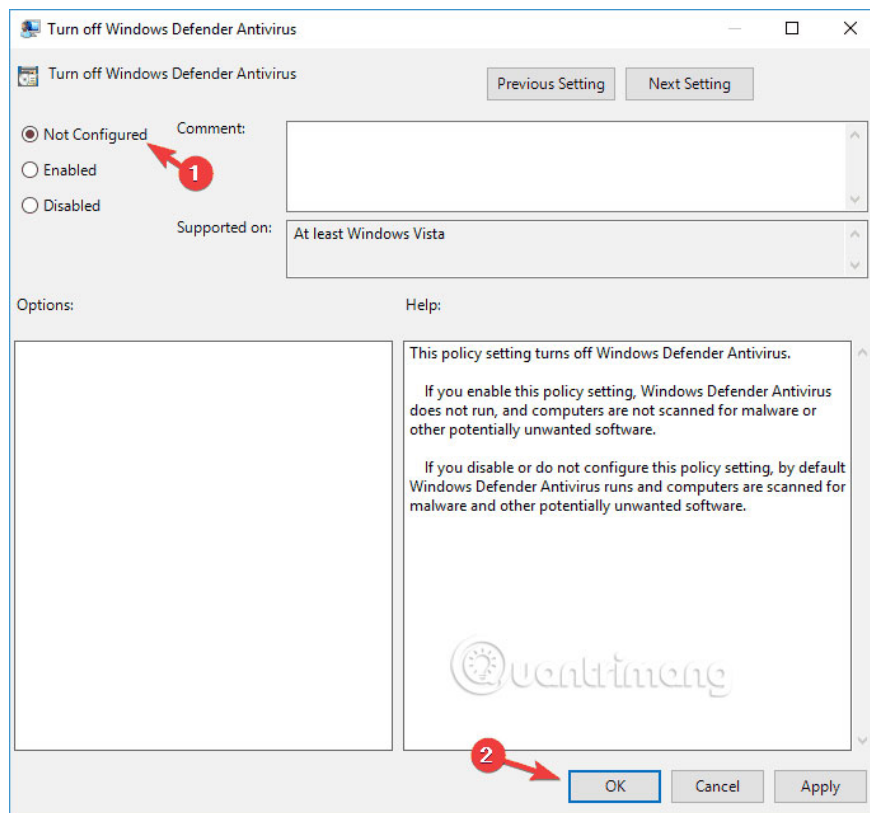
**Step 1** . Press **Windows + R** key and type **gpedit.msc** , then press **Enter** or click **OK** .



**Step 2** . When Group Policy Editor opens, in the left pane navigate to **Computer Configuration > Administrative Template > Windows Components > Windows Defender Antivirus** . In the right pane, double-click **Turn off Windows Defender Antivirus** .



Select **Not Configured** and click **Apply** and **OK** to save the changes.

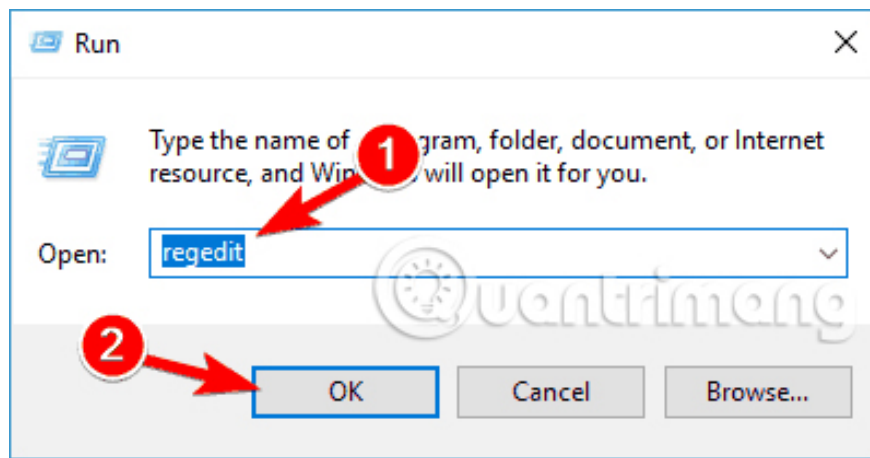


After making these changes, Windows Defender will be activated, and it will run without any problems on your computer.

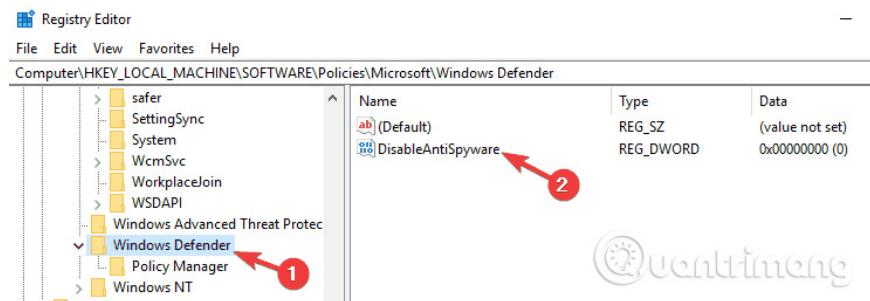
## 8. Modify the registry

If Windows Defender does not turn on, the problem may be related to the registry. However, you can easily modify your registry and fix this problem by doing the following:

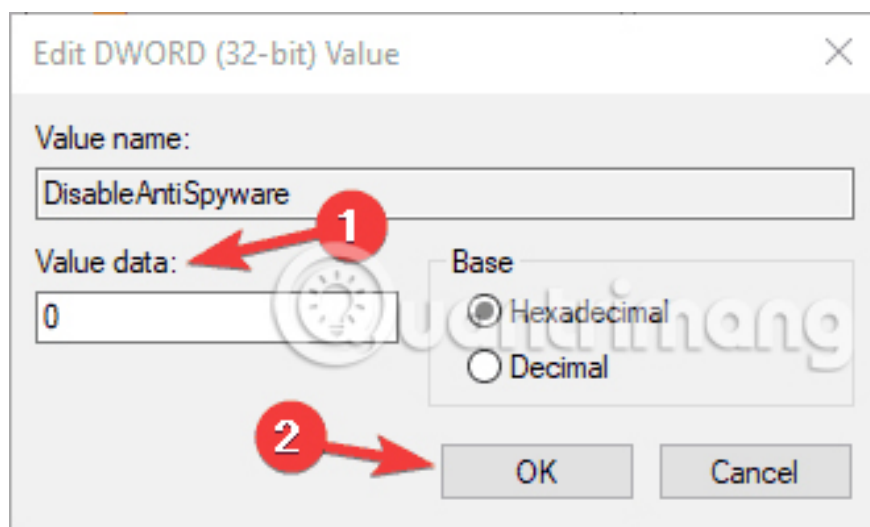
**Step 1** . Press **Windows + R** key and type **regedit** , then press **Enter** or click **OK** .



**Step 2.** After the Registry Editor opens, navigate to **HKEY\_LOCAL\_MACHINE\SOFTWARE\Policies\Microsoft\Windows Defender** in the left pane. In the right pane, find **DisableAntiSpyware** **DWORD** and double-click it. If **DWORD** is not available, right-click on the right pane and select **New> DWORD (32-bit) Value** from the menu.



**Step 3 .** Set the **Value data** to **0** and click **OK** to save the changes.

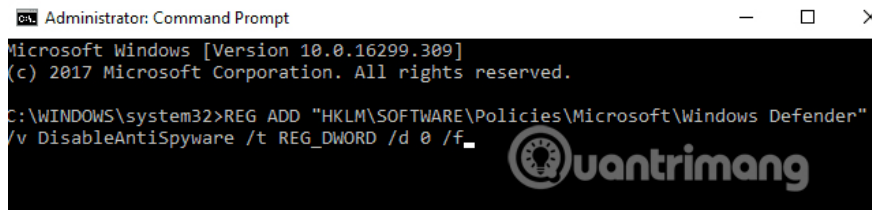


After doing that, Windows Defender will be activated on your computer and it will start working without any problems.

If you prefer to use the command line, you can do this from Command Prompt or PowerShell by doing the following:

**Step 1** . Open Command Prompt as an administrator.

**Step 2** . Now enter the **REG ADD 'HKLM\SOFTWARE\Policies\Microsoft\Windows Defender' /v DisableAntiSpyware /t REG\_DWORD /d 0 /f** command and press **Enter** to run it.



```
Administrator: Command Prompt
Microsoft Windows [Version 10.0.16299.309]
(c) 2017 Microsoft Corporation. All rights reserved.

C:\WINDOWS\system32>REG ADD "HKLM\SOFTWARE\Policies\Microsoft\Windows Defender"
/v DisableAntiSpyware /t REG_DWORD /d 0 /f
```

After doing that, the selected DWORD will be instantly changed to 0 and the problem will be resolved. You can also delete DisableAntiSpyware DWORD.

## 9. Some other remedies

Incorrect installation of Zone on Internet Explorer can also cause Windows Defender errors, so you can correct the problem by resetting Internet Explorer to its original state.

If using Proxy Server, Windows Defender will not be able to update. In this case you need to change your Proxy Server:

- Press **Windows + X** key combination to open the Power User Menu, then click **Command Prompt (Admin)** .
- Enter the following command into the Command Prompt window:

```
NETSH WINHTTP SET PROXY 1.1.1.1:8080
```

Or:

```
NETSH WINHTTP SET PROXY MYPROXY.NET:8080
```

- Finally restart your system to check for errors.

The last cause may cause Windows Defender to work incorrectly due to malware. You can download and use the Windows Defender Offline Tool or other antivirus software and install it to scan malware on your computer.

Download Windows Defender Offline Tool to your device and install it here:

- 32-bit version.
- 64-bit version.

Refer to some of the following articles:

1. Windows Defender is disabled or inactive, this is a fix
1. How to disable and completely remove Windows Defender?
1. Your Windows 10-based computer has a virus, this is a fix

Good luck!

You finished reading the article "**How to fix errors cannot open Windows Defender on Windows 7/8/10**" edited by the [TipsMake](#) team. We hope this article has provided you with many useful tech tips and tricks. You can search for similar articles on tips and guides. Thank you for reading and for following us regularly.