

How to fix errors Cannot find or load Microsoft Installer to install Skype

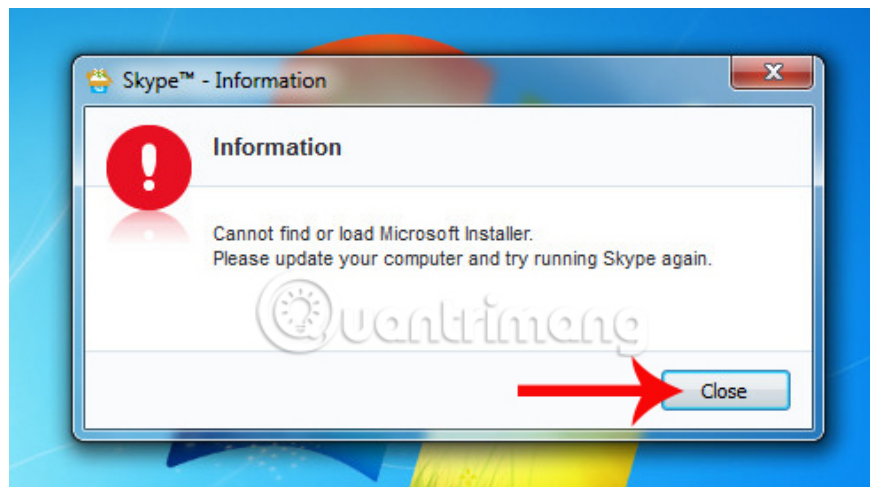
During the installation of Skype on your computer, especially Windows 7, you will often encounter the error message Cannot find or load Microsoft Installer.

Skype is also one of the most popular video call and chat software in businesses and office jobs. The operation of installing Skype software on Windows is very simple, but with Windows 7, an error message could not be found or load Microsoft Installer. When this message appears, you will no longer be able to continue installing Skype and using this software.

This error may be due to the Skype version you downloaded in the latest version and not yet compatible with the operating system. So how to fix this notification on Skype installation error?

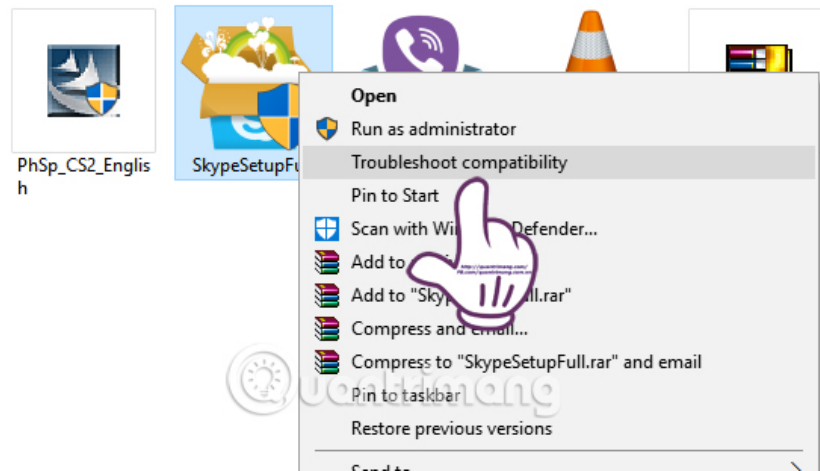
1. Instructions on how to delete a Skype account permanently
2. Instructions on how to delete chat history on Skype
3. Guide to viewing message history on Skype

When the error message appears as shown below, click **Close** to close the error window.



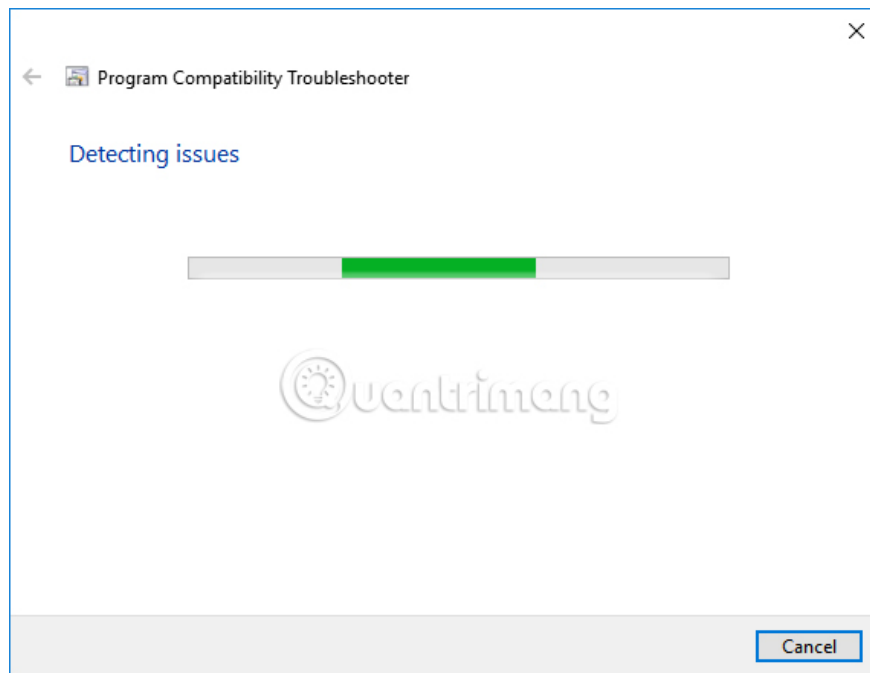
Step 1:

First, access the folder containing the Skype software installation file on your computer. We right-click on the .exe Skype file and select **Troubleshoot compatibility** .

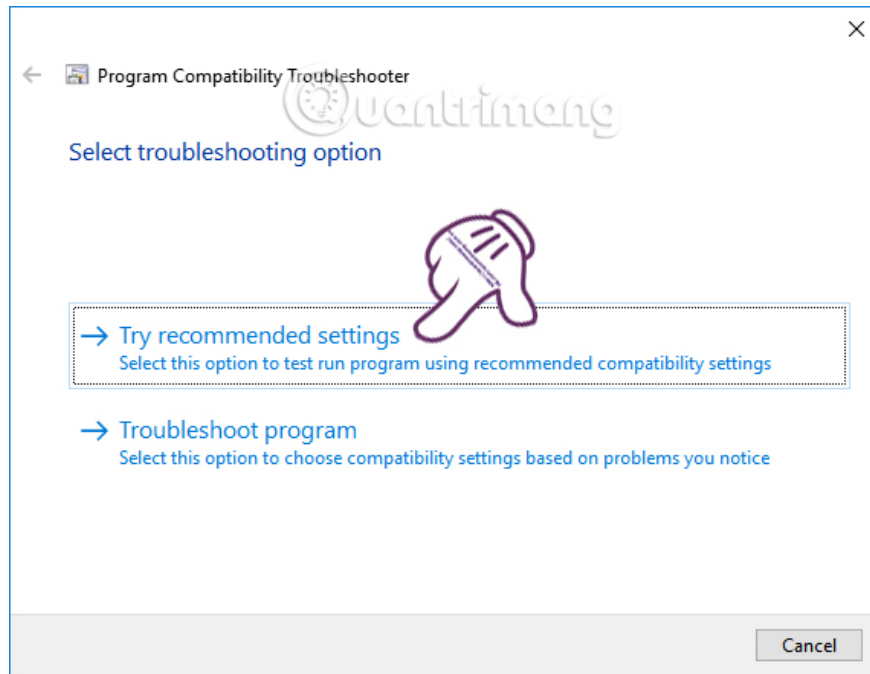


Step 2:

Soon the Program Compatibility Troubleshoots interface appears detecting problems on Skype software.

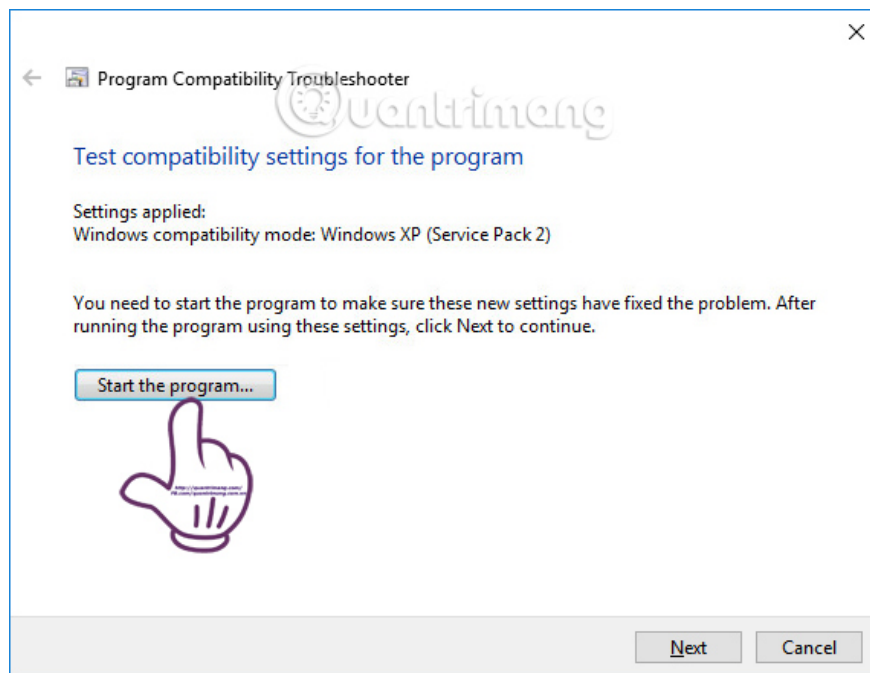


Then switch to the Select troubleshooting option interface, we click on the **Try recommended settings** to proceed to fix the error.

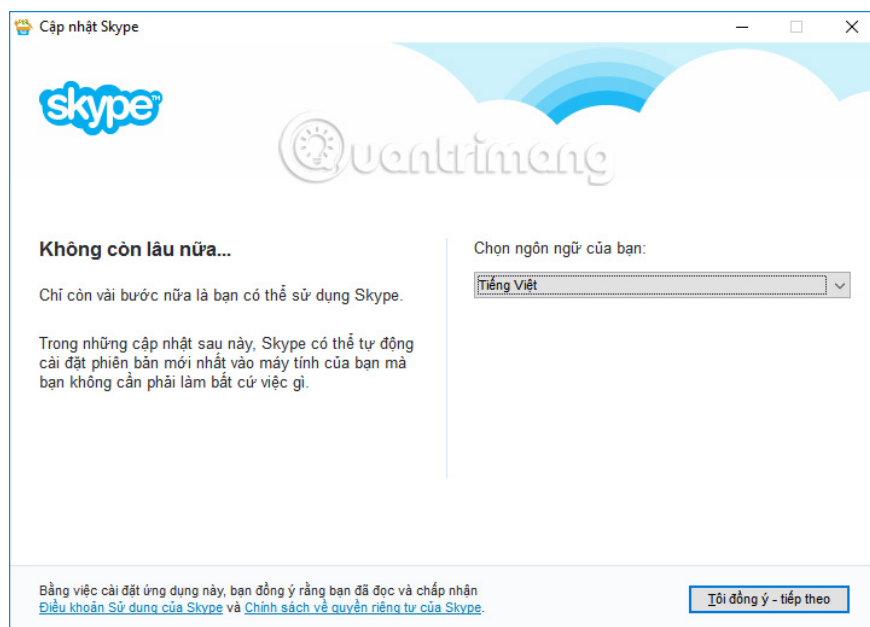


Step 3:

Finally, click on **Start the program** to reinstall the software from the beginning and fix the Skype installation error.



We wait for a few seconds and then appear the Skype settings window as usual.



The above is how to fix Skype with notification settings Cannot find or load Microsoft Installer on Windows 7. After fixing the error, users proceed to install Skype as usual.

I wish you all success!

You finished reading the article "**How to fix errors Cannot find or load Microsoft Installer to install Skype**" edited by the [TipsMake](#) team. We hope this article has provided you with many useful tech tips and tricks. You can search for similar articles on tips and guides. Thank you for reading and for following us regularly.