

How to fix error 1706 when installing Microsoft Office

Error 1706 occurs at the time when you use the InstallShield application when you install Microsoft Office on your computer. This error is caused by some problems with the Office installer and comes from having administrative privileges, corrupt / corrupted files, or just not using the CD properly.

You may get an error similar to the following:

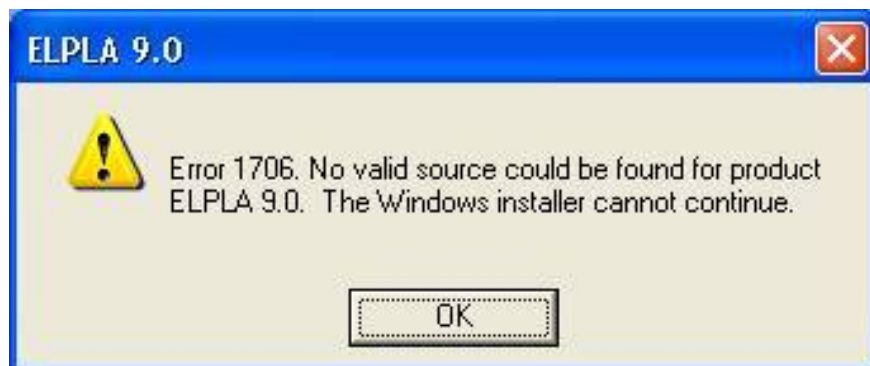
'Error 1706. Setup cannot find the required files. Check your connection to the

Cause of error 1706

There are several causes of installer error 1706, among them, these are the most common:

1. You originally installed Microsoft Office from a network administrator installation.
2. Network admin settings are no longer available to you.
3. You are trying to use an Office CD-ROM when you are prompted by Windows Installer for the Office source location.
4. Click **Cancel** when prompted to insert the CD.
5. You have a registry error on your PC.

Files in the administrative installation are not compressed, and files on the Office CD-ROM are compressed. However, Windows Installer was unable to find the difference between the two.



How to fix error 1706

Step 1 - Download the latest InstallShield version

InstallShield often receives updates to ensure it can work with all the latest files. If you get error 1706, then it's possible that your InstallShield may be out of date and you should update it. To do this, you need to be able to download the latest version of InstallShield from their website [here](#):

Step 2 - Make sure you click on Setup.exe (not the MSI file)

Clicking the MSI file will result in error 1706, as it won't have the range of options needed to run. To fix this, you should click on **Setup.exe** application . Setup.exe will use the MSI file and bring all other connections together, allowing the computer to run much smoother with the installer working as well as it should.



Step 3 - Use an alternative network solution

Not having the correct authority in the network can lead to error 1706, as some networks have different protocols. If you do not have the correct network permissions, authorization barriers may prevent you from installing the programs you need, so you should use a different networking solution. To use an alternate network, follow these steps:

1. Click **Start> Run** .
2. In the **Open** box , type the following, and then click **OK** :

```
new network pathSetup.exe /fvm package name.msi
```

Where **new network path** is the full path to the alternative network admin installation, and **package name** is the name of the Windows Installer .msi package on the root of this administrative installation (for example, Proplus.msi).

3. Click **OK** when the update is complete.

Note : After you follow these steps, Windows Installer will use the new server location whenever you need to reinstall, repair, or add a feature to your Office installation.

Step 4 - Delete the registry

Another way to fix this error is to use a registry cleaner application to fix various corrupted settings. Registry is the Windows system internal database that stores important settings and options for your PC. Unfortunately, this database keeps getting corrupted, making it impossible for the installer to use it correctly.

To fix this problem, it's a good idea to use a registry cleaner to fix any corrupted settings inside this database. Not many people realize it, but this is probably the reason why error 1706 appears. Reference: [36 best free registry cleaning software 2020](#) for more details.

You finished reading the article "**How to fix error 1706 when installing Microsoft Office**" edited by the [TipsMake](#) team. We hope this article has provided you with many useful tech tips and tricks. You can search for similar articles on tips and guides. Thank you for reading and for following us regularly.