

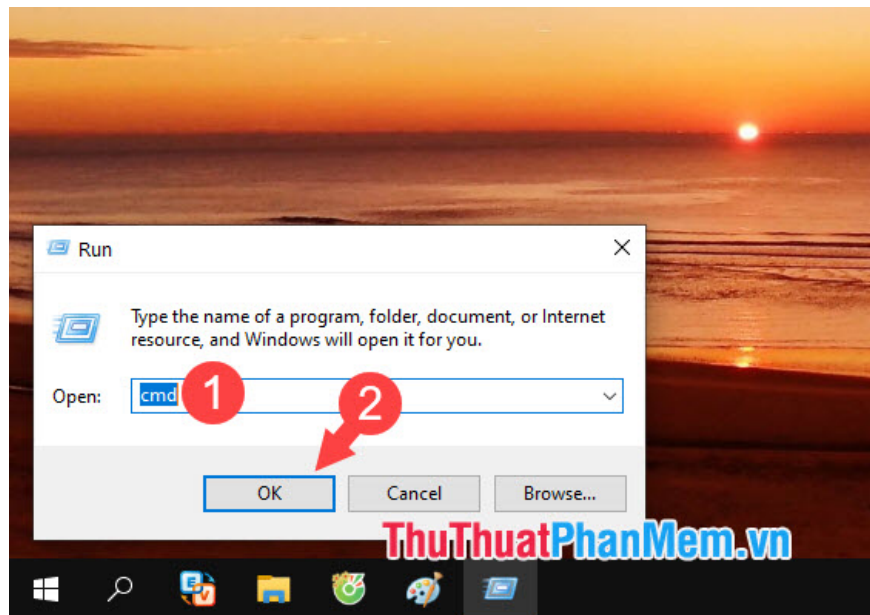
# How to fix Driver Power State Failure error on Windows

One of the most haunting errors for Windows users is the blue screen error. However, we can minimize this error by reading the error codes in it and finding different workarounds on the Internet.

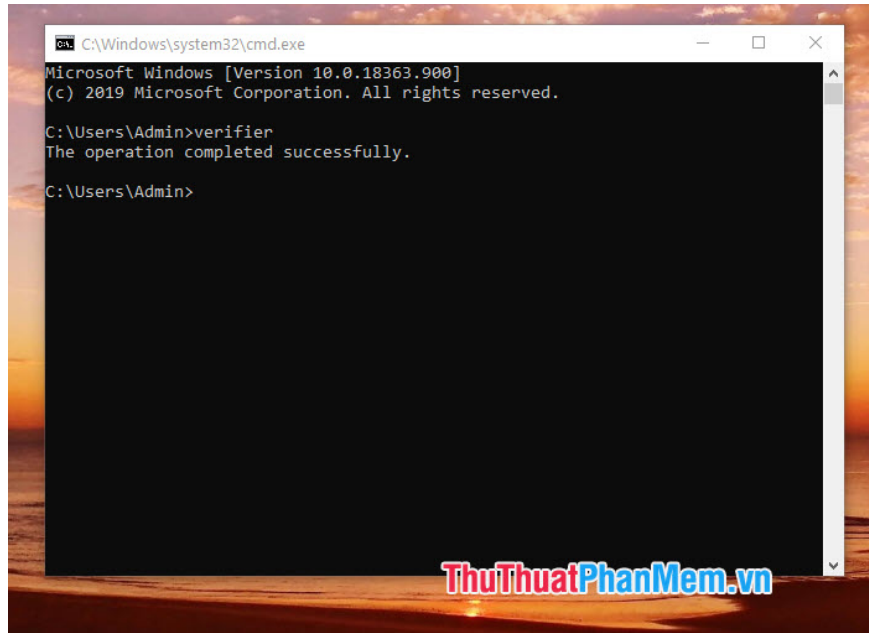
In the following tutorial, let's learn how to fix **DRIVER POWER STATE FAILURE** error below.

## 1. Use the Verifier command in cmd

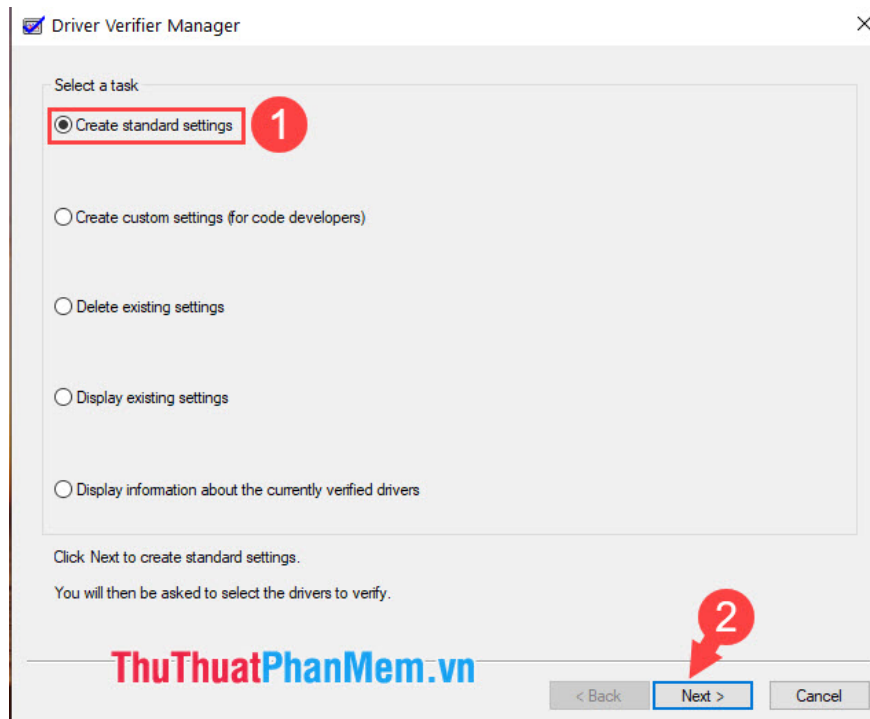
**Step 1:** You open the Run with the keyboard shortcut **Windows + R** . Next, enter **cmd** (1) => **OK** (2) .



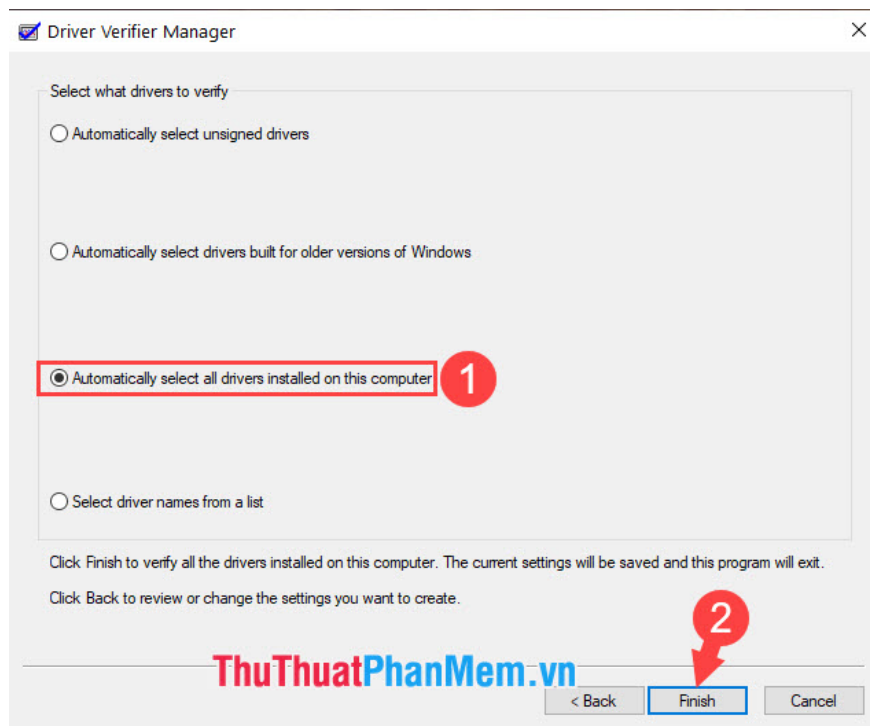
**Step 2:** Enter the *verifier* command and press **Enter** .



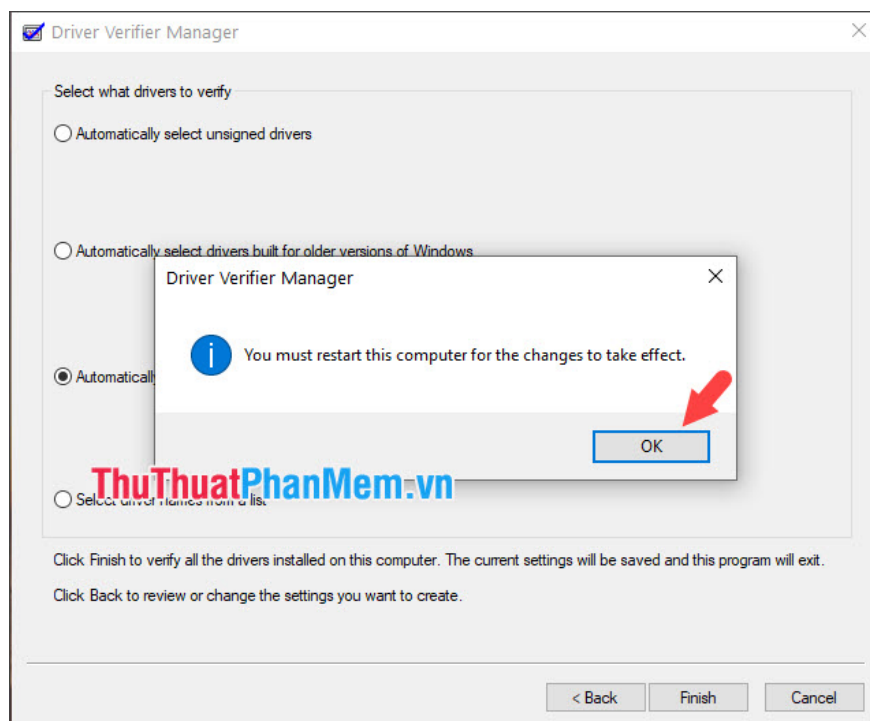
Then a new dialog box appears, click **Create standard settings (1)** => **Next (2)** .



**Step 3:** Select **Automatically select all drivers installed on this computer (1)** => **Finish (2)** .

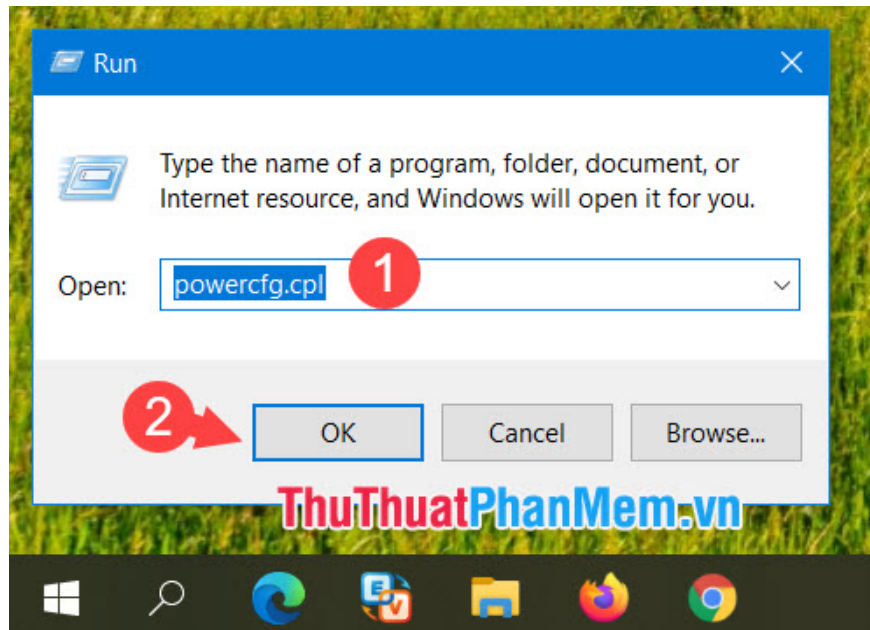


**Step 4:** Click **OK** and restart the computer is finished.

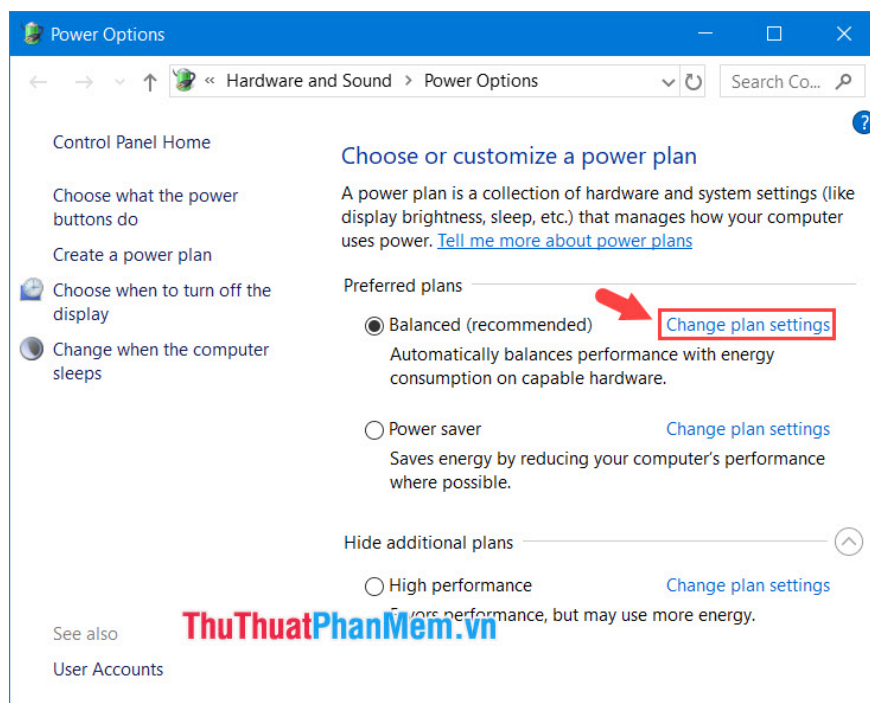


## 2. Adjust the power saving mode on the computer

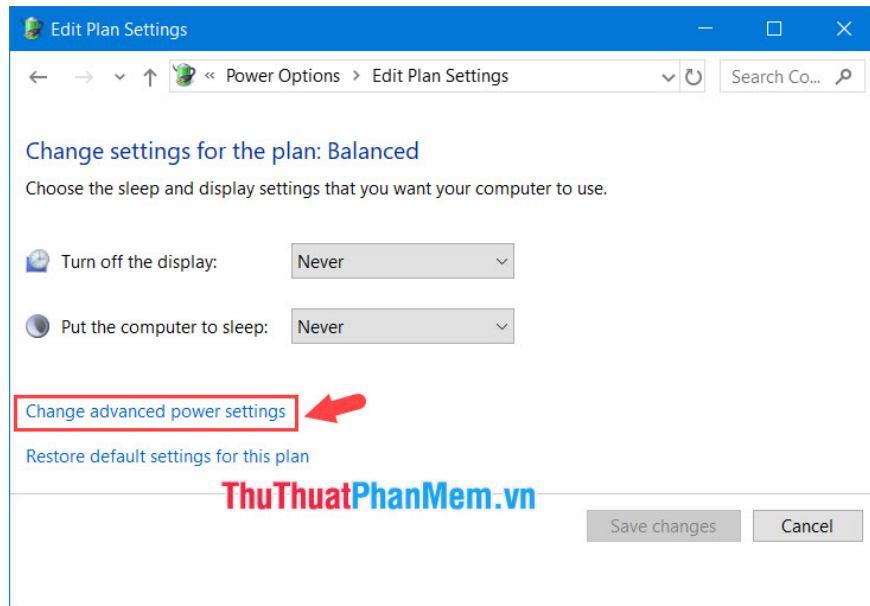
**Step 1:** Open the **Run** dialog box with the key combination Windows + R. Next, enter the command **powercfg.cpl (1) => OK (2)** .



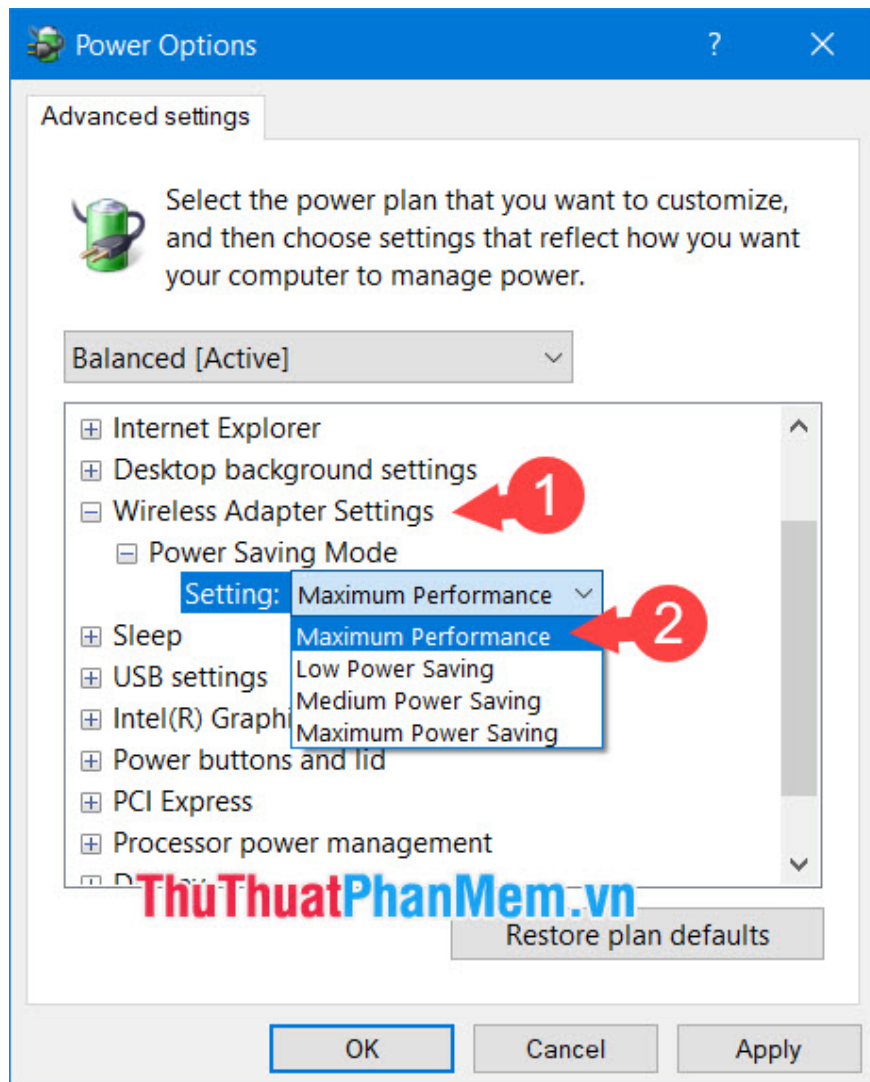
**Step 2:** Choose **Change plan settings** .



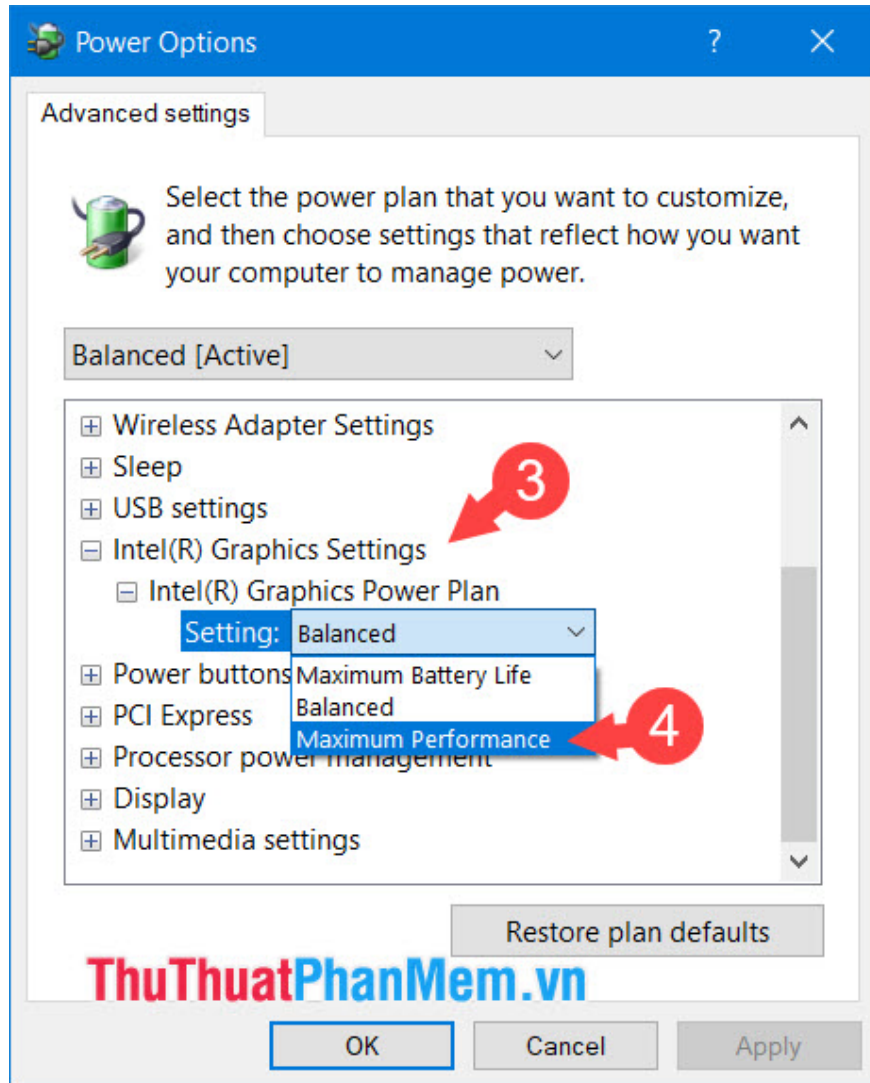
Next, click on **Change advanced power settings** .



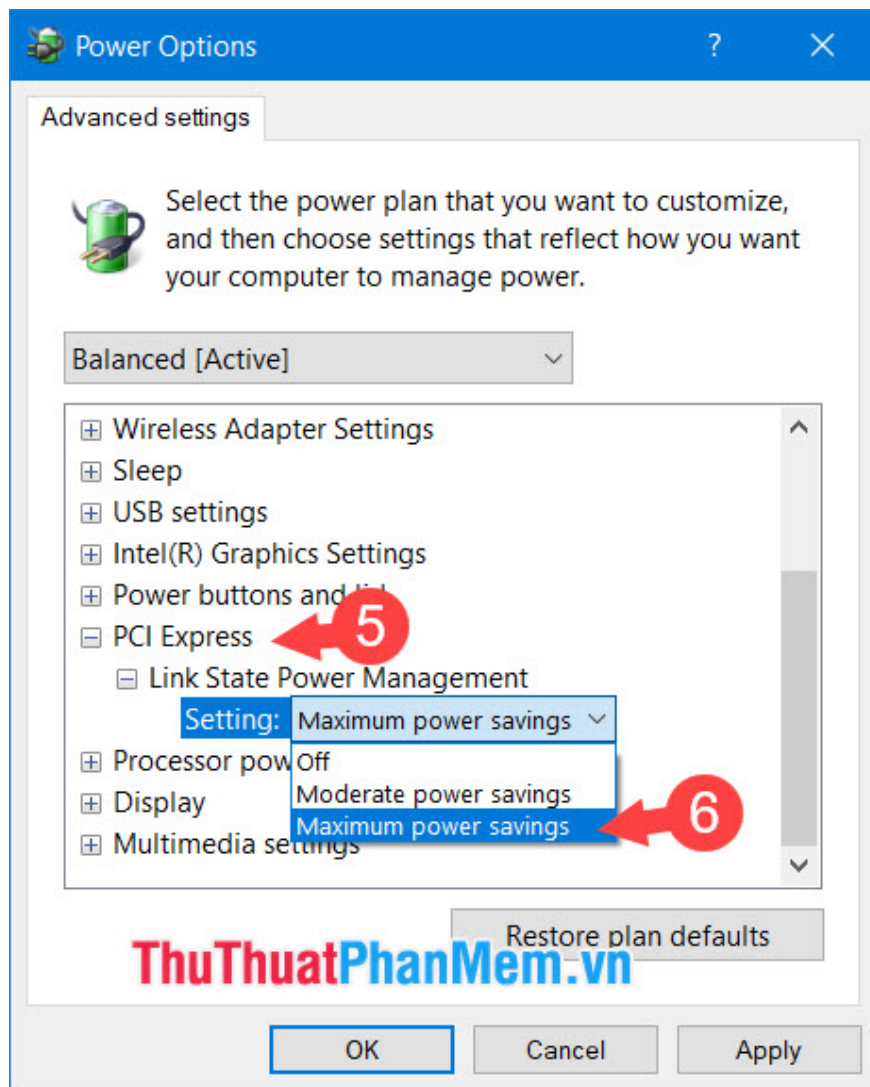
**Step 3: Go to Wireless Adapter Settings (1) => Maximum Performance (2) .**



Next, go to **Intel (R) Graphics Settings (3)** => **Maximum Performance (4)** .



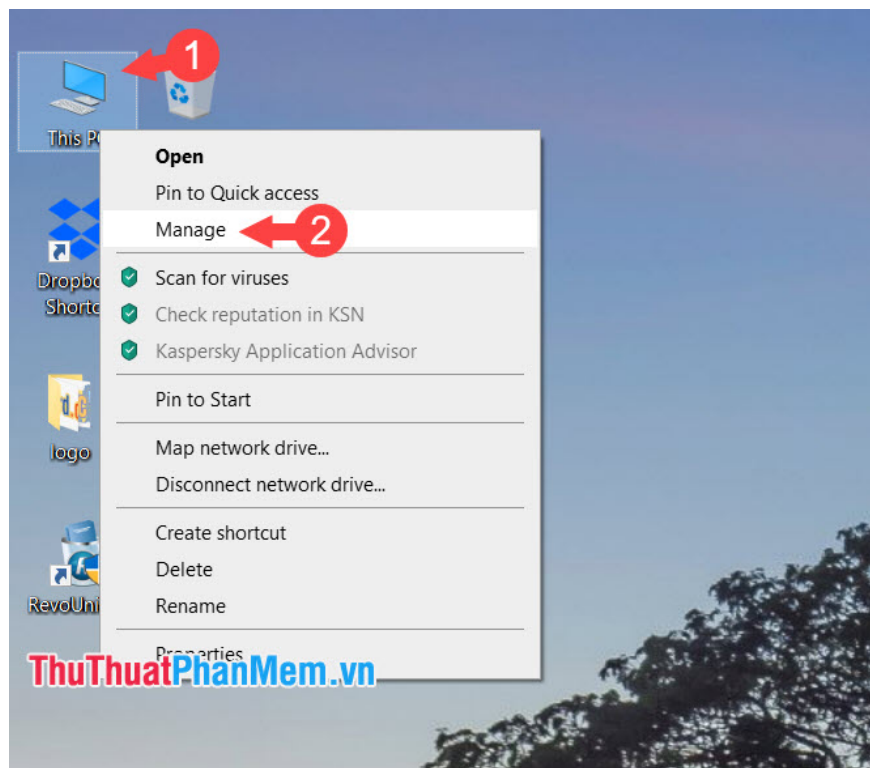
And finally, you find and select the item **PCI Express (5)** => **Maximum power savings (6)** .



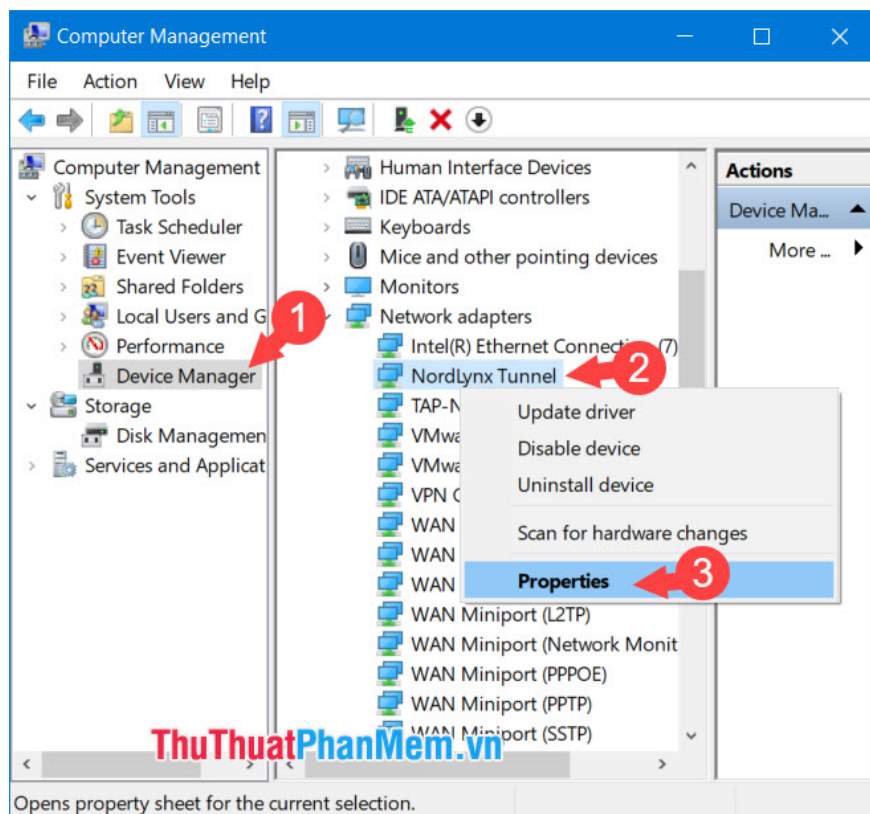
### 3. Uninstall the driver that has been installed

It is possible that the fault causing DRIVER POWER STATE FAILURE is a driver conflict with the system. Please remove this driver from the computer and try restarting the computer to check.

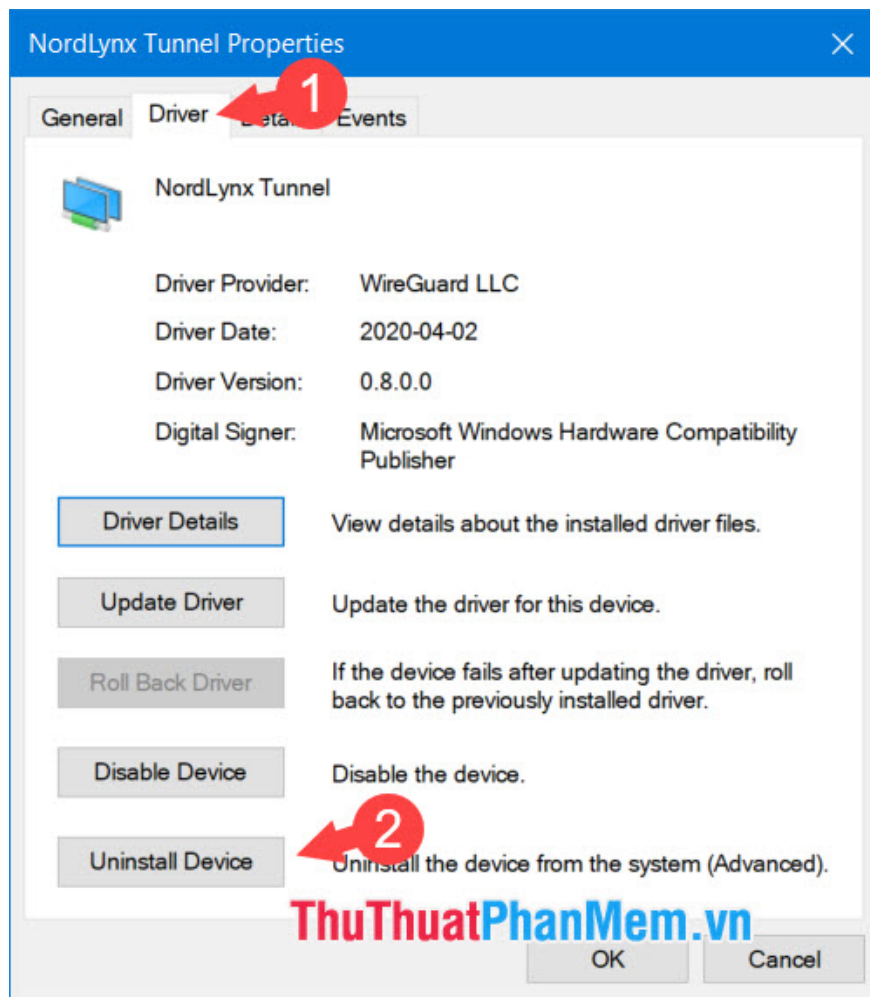
**Step 1:** Right-click on **This PC / Computer (1)** => **Manage (2)** .



**Step 2:** Click **Device Manager** (1) => right-click the installed driver (2) => **Properties** (3) .



**Step 3:** Switch to the **Driver** tab (1) => **Uninstall Device** (2) .



With the tips shared in the article, hopefully readers will no longer encounter blue screen error DRIVER POWER STATE FAILURE. Good luck!

You finished reading the article "**How to fix Driver Power State Failure error on Windows**" edited by the [TipsMake](#) team. We hope this article has provided you with many useful tech tips and tricks. You can search for similar articles on tips and guides. Thank you for reading and for following us regularly.