

# How to fix 'Diagnosing Your PC' error in Windows 10

Some Windows users have reported being unable to exit Diagnostic PC mode. If you are currently struggling to fix the Diagnosing Your PC error, this article will provide you with a number of different troubleshooting methods.

Some Windows users have reported being unable to exit Diagnostic PC mode. After waiting for a few hours, some affected users tried restarting to exit this mode, but their PC went dark again, showing the logo and then the Diagnostic PC screen showed up again. market. The issue is appearing on Windows 7, Windows 8.1, and Windows 10.

## What is causing the 'Diagnostic PC' problem?

Based on the variety of user reports and testing of different repair methods suggested by some affected users, there are several causes of PC getting stuck in the *Diagnosing your PC* screen .



Here is a list of scenarios that can cause this problem:

- **Not enough system capacity** - Turns out, this particular incident can also occur in case the system does not have enough space to load all the necessary processes and service to boot. In this case, you can resolve the

problem by starting the computer in Safe Mode and clearing up space so the operation can be completed without problems.

- **File system error** - A **file system** error can also cause the **System Diagnostic** tool to appear at every system startup. It will get stuck in a loop if the utility is hit by the problem. If this is the case, you should be able to resolve the problem by running repair utilities such as DISM and SFC, or by restoring Windows settings to a healthy state using System Restore.

- **Utility Automatic Repair malfunction** - As a number of different users have reported, this problem can also result from a number of problems related to the drive system is not defined. In this case, the Automatic Repair utility will try to open at every startup to try to resolve the problem, but it won't be able to identify the culprit. One way to avoid this problem is to bypass the Automatic Repair screen by disabling the utility from the CMD window as administrator.

- **Data BCD broken** - In more severe cases, this problem can also occur due to circumstances prevent corrupted data boot startup process is complete. In this case, you can refresh any operating system components, including boot data, by doing a repair install or a clean install.

If you are currently struggling to fix the "Diagnosing Your PC" error, this article will provide you with a number of different troubleshooting methods.

For best results, perform the fixes in the order in which the article sorted.

Let's get started!

## **How to fix "Diagnosing Your PC" error on Windows 10**

### **Method 1: Boot in Safe Mode and free up some space**

# Startup Settings

Press a number to choose from the options below:

Use number keys or functions keys F1-F9.

- 1) Enable debugging
- 2) Enable boot logging
- 3) Enable low-resolution video
- 4) Enable Safe Mode
- 5) Enable Safe Mode with Networking
- 6) Enable Safe Mode with Command Prompt
- 7) Disable driver signature enforcement
- 8) Disable early launch anti-malware protection
- 9) Disable automatic restart after failure

As some users have reported, this particular issue can also occur in cases where the system doesn't have enough space to boot, with all third-party processes and services scheduled to load during the boot process. If Windows tries to load everything during boot and fails, it will automatically boot into Diagnostic Mode to try to find out which component is faulty.

However, in situations where the required space cannot be cleared, the PC will be stuck in the Diagnostic Mode loop. Some users in a similar situation were finally able to resolve the problem by starting their computer in Safe Mode and freeing up some space.

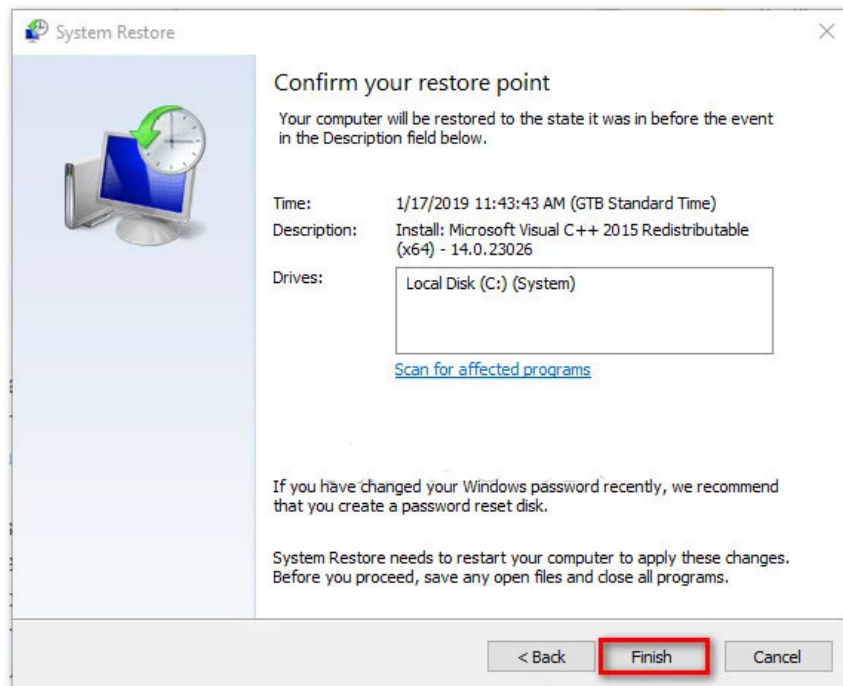
## Method 2: Run SFC and DISM scans

As it turns out, the problem was also likely caused by a file system error to some extent preventing the boot from completing. Under normal circumstances, you need to open a CMD window with admin privileges and run two utilities: SFC and DISM.

But since you are unable to get past the Diagnostics screen, you will need to perform the scans before the boot sequence. Refer to the following 2 articles for details on how to do it:

1. Use the SFC scannow command to fix Windows 10 file system errors
2. How to fix Windows 10 image with DISM

## Method 3: Run the System Restore utility



If the methods above did not help you to resolve the issue, you are most likely dealing with a serious problem that cannot be resolved in the normal way.

System Restore is able to solve most boot problems caused by file system corruption, by restoring the computer to a healthy state, when all components are working properly.

Refer to the article: Instructions on how to use System Restore on Windows for more details.

#### **Method 4: Disable Automatic Repair**

If you have gone through this step with no results, then you are clearly solving the system drive related issues. Whenever this happens, the **Automatic Startup Repair utility** opens at every system startup. But if the utility malfunctions, it may prevent you from going through the boot screen.

Some Windows 7 and Windows 10 users in this situation have managed to resolve the problem by disabling the **Automatic Startup Repair utility** to avoid the '**Diagnosing your PC**' screen .

But to do this, you need to first boot in Safe Mode to get past the error screen and disable the Automatic Repair feature:

1. Press the **F8** key repeatedly as soon as you see the initial screen. Doing this will eventually bring you to the Advanced Boot Options menu.
2. When you are in the **Advanced Boot Options** menu , select **Safe Mode with networking** by pressing the corresponding key ( **F5** ) or the arrow keys.
3. When the boot sequence is complete, press **Win + R** to open the **Run** dialog box . Inside the text box, type '**cmd**' and press **Ctrl + Shift + Enter** to open Command Prompt with admin rights. When you are prompted by UAC (User Account Control), click **Yes** to grant administrative privileges.

4. Once you're inside the Command Prompt, type the following command and press **Enter** to disable the Automatic Repair utility from the startup sequence:

```
bcdedit /set recoveryenabled NO
```

5. After the command has been successfully processed, reboot the computer to boot as usual. At the next boot sequence, you will no longer see the Automatic Repair loop.

### **Method 5: do a repair install or a clean install**

If none of the repair strategies outlined above have allowed you to solve the problem, then you are most likely experiencing a serious system failure that cannot be resolved in the usual way. In this case, the best way to fix the problem is to reset every Windows component, including all boot related processes that could cause the Automatic Repair loop.

You can always start a clean install, but keep in mind that if you choose to do this, you will lose any data currently stored inside Windows settings. Your personal files, apps, games, documents and any other type of media will be lost if you perform a clean install.

A better solution would be to do a repair install (upgrade in place). This will also reset all operating system components, including boot data, but will not affect your files. Your apps, games, personal media and even some user preferences will be preserved.

You finished reading the article "**How to fix 'Diagnosing Your PC' error in Windows 10**" edited by the [TipsMake](#) team. We hope this article has provided you with many useful tech tips and tricks. You can search for similar articles on tips and guides. Thank you for reading and for following us regularly.