

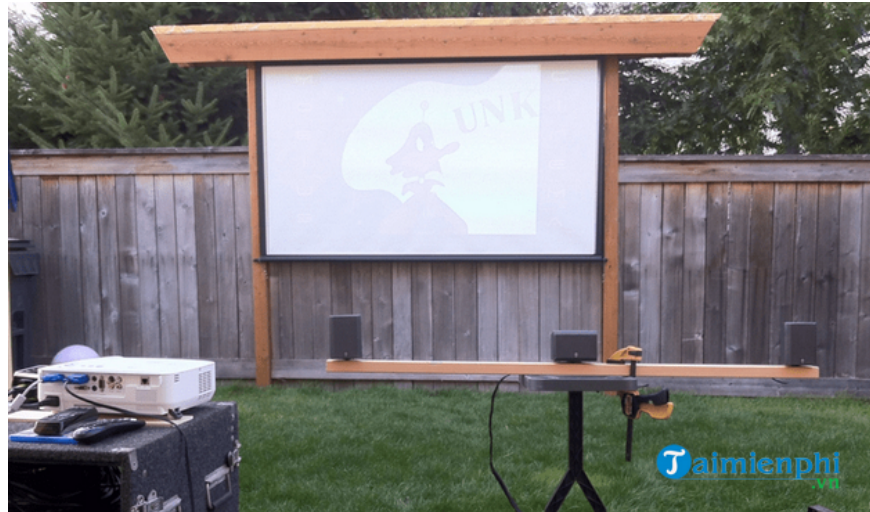
How to fix common projector problems

Projectors play a crucial role in presentations, meetings, and lectures. When a projector malfunctions, it can significantly impact such events. In this article, TipsMake has compiled common projector problems and shared solutions.

Projectors are essential devices often found in conferences and meetings because they help users deliver effective and visually appealing presentations. However, there are several common problems that can arise when using projectors, and in most cases, these issues relate to image quality and display. Below is a summary of common projector errors and troubleshooting methods you can apply to resolve these problems.



How to fix common errors on a projector



There are several reasons why a projector might not turn on. If you encounter this problem, try the following:

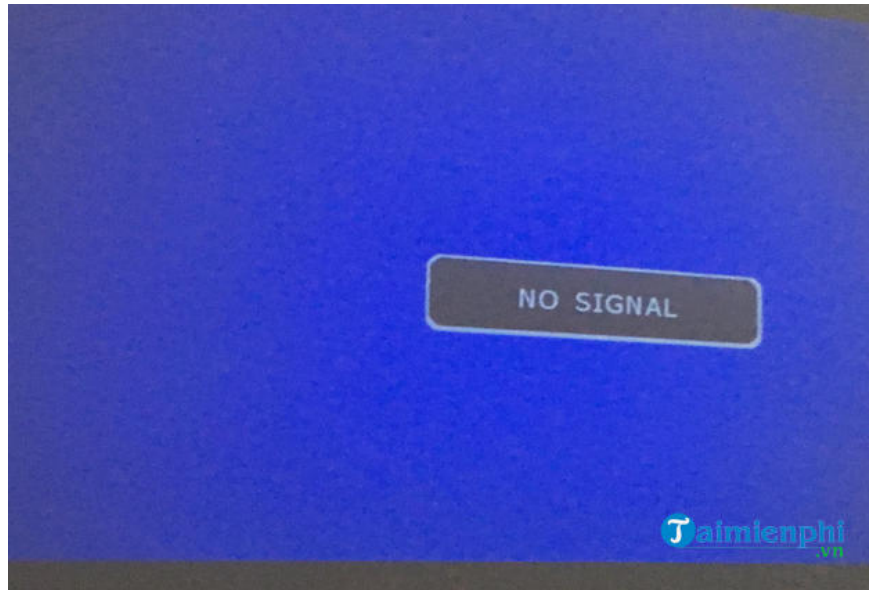
- Ensure the projector is plugged into a power outlet.
- Check the temperature indicator light to ensure the device is not overheating.
- If you are using a remote control to turn on the projector, check the battery level.
- Ensure all cables are securely connected.
- Try resetting the Lamp Timer Reset option.
- Ensure the projector is not in standby mode.

If you've tried the above methods and your projector still won't turn on, the problem might be more complex, such as internal component failure. Additionally, you can find instructions on how to fix the "Computer not recognizing projector" error [here](#).

The problem of image discoloration can be caused by various factors. If you encounter this issue, follow these steps:

- Check the condition of the VGA cable. If you see any bent prongs, the VGA cable may need to be replaced.
- Optimize the monitor and color settings for the room lighting.
- Check if your projector needs a lamp replacement.

If none of the above suggestions help resolve the projector malfunction, the problem may be more serious. Contact a professional projector repair service to have the color wheel or polarizer on the projector checked.



If the projector is turned on but no image appears, you need to check the cables to see if they are properly connected. If everything seems fine, then you most likely have a problem with the lamp ballast or the lamp itself. The lamp ballast is what powers the lamp. If the lamp ballast fails, the lamp is most likely to fail as well. In this case, you need to buy a new one to replace it.

Additionally, an inappropriate signal source can also prevent the image from being displayed. If you are using a laptop or PC, the output port for an additional monitor may not be enabled. Press the **Windows + P** key combination to browse through the settings until this output port is enabled.

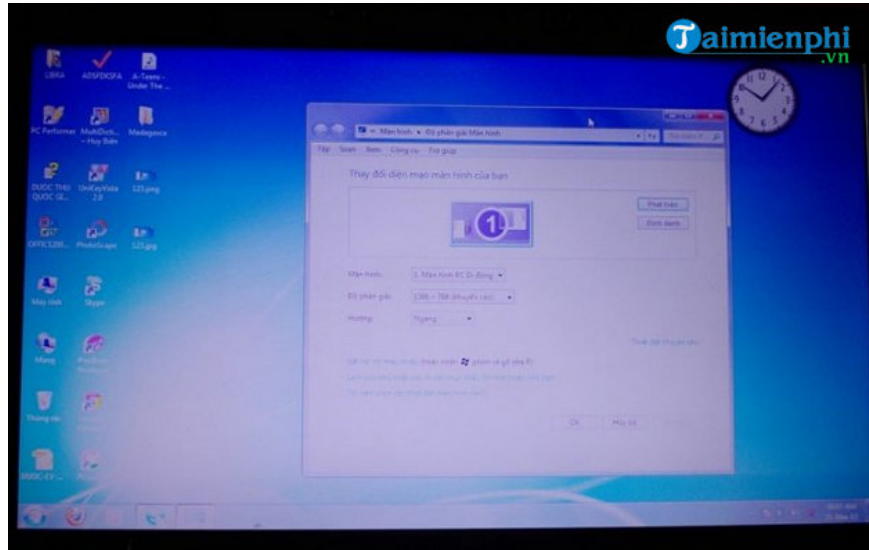
This is a common projector issue that almost everyone encounters. Adjusting your computer's resolution is the way to resolve the problem of low image quality. Many newer LCD projectors are equipped with an automatic setting feature that instantly adjusts the projector's resolution to match the computer's resolution. However, there are cases where the projector cannot match the computer's resolution, affecting the displayed image quality. To resolve this, simply adjust your computer's resolution until the image quality improves.



Sometimes the image displayed on the screen loses a corner or part of its original size. This problem can be fixed by using the Auto Image or Image Sync button on the projector or remote control to automatically adjust the size

of the projected image to match the projector's resolution. If that doesn't work, you need to calibrate your computer's resolution to match the projector's resolution to find the appropriate setting. Adjusting the resolution on a laptop can be quite difficult, especially if its standard resolution exceeds the projector's resolution.

This is a fairly common problem, and the main cause is the fan. Make sure nothing is blocking the vents on the projector and don't place it in direct sunlight. Also, remember to clean the projector regularly to remove any accumulated dust. If you don't hear the fan spinning, it means the fan isn't working to cool the projector. In this case, you need to take it to a repair service for inspection.



If the problem occurs with an LCD projector, you should know that all projector lamps have a certain lifespan, which varies from model to model. If the image starts to become blurry, then you should probably consider buying a new lamp. Usually, on projectors, you can adjust the focus to correct the image. In many cases, when the projector is placed in a hot and humid environment for too long, condensation may form on the projector lens, causing the image to become blurry. You can turn on the projector for a while to allow the heat inside to dissipate and evaporate the condensation.

There are countless types of projectors with different components and parts, so it's best to consult the manufacturer's user manual to determine the meaning of a flickering projector lamp. For example:

- Power light: If the power button light is green or flashing green, the projector is likely operating or starting up. If the power light is orange or flashing orange, the projector may be in standby mode or off.
- Projector lamp: If the projector lamp is flashing orange or red, this usually means the lamp may be burned out or needs replacing.
- Temperature indicator light: If the temperature light is flashing orange or red, this usually means your projector is overheating or needs cleaning. You need to remove any obstructions that may be blocking the projector's vents.

Above are some common projector problems you may encounter during use. Try applying the solutions corresponding to the problem you are experiencing, and if they don't work, you should take the projector for repair. Additionally, you can refer to how to fix an inverted image when a projector is mounted on the ceiling here.

You finished reading the article "**How to fix common projector problems**" edited by the [TipsMake](#) team. We hope this article has provided you with many useful tech tips and tricks. You can search for similar articles on tips and guides. Thank you for reading and for following us regularly.
