

# How to fix Cannot recognize the USB connection error when installing the printer

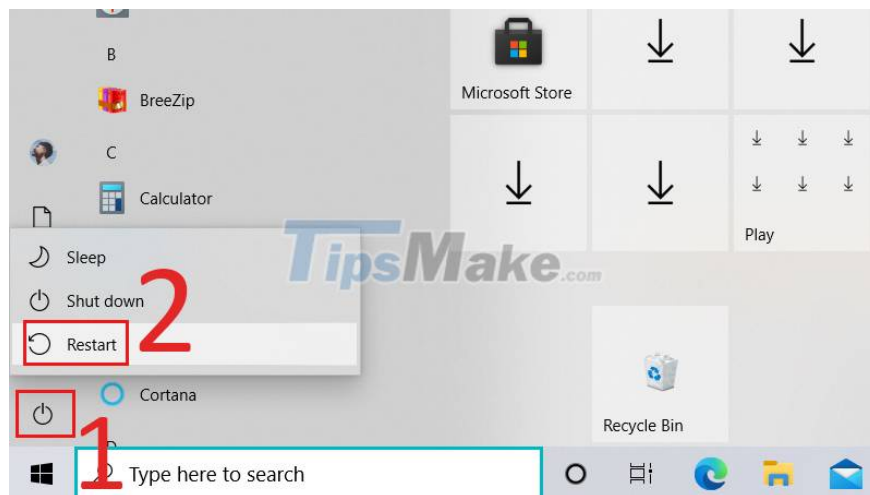
You are connecting the printer to the computer but receive the message Cannot recognize the USB connection . This article will show you how to fix this error when installing the printer.

Error Cannot recognize the USB connection is quite common with Canon LBP 2900 printer series . This error is caused by the computer not receiving the printer's USB when making a connection between the printer and the computer. Follow the article below to know how to fix the Cannot recognize the USB connection error when installing the printer!

## 1. Restart your Windows computer

The simplest thing is to try restarting your computer to fix the error on memory. Remember to save the documents you are working on and close all applications before shutting down.

At the Start section, click the power button icon > Select Restart.



## 2. Disconnect computer power and reconnect after 15 minutes

To disconnect the computer's power, the first thing to do is to turn off your computer > Unplug the power. Wait about 10-15 minutes, then proceed to plug in the power again, turn on your computer and reconnect the USB drive to see if the error has been fixed or not.



### **3. Connect the USB drive on a different port**

This is only a temporary solution. If the 'Cannot recognize the USB connection' error occurs during the USB drive connection, you can connect the USB drive on a different port to see if the error is resolved.



### **4. Fix Driver software errors on the computer**

Check the printer cable connected to the computer to see if there is any error. If there is an error, we can take the cable of another machine to plug it back in, then restart the computer and printer and proceed to reinstall the printer computer driver.



## 5. Printer hardware fix

This case is caused by an unstable power supply, or a card formater error in the printer. In this case, it can be fixed if it is fixed, but it is not stable. In this case, only we should replace the Card formater to make it work stably.



## 6. Some other printer-related errors

### Windows computer can't find printer in LAN

The server is the machine that connects the printer and to other computers. If the workstations do not have the same IP address as the server, your computer will not be able to find the printer on the LAN.

### Printer error can only print 1 page

The reason is because the paper size you use to edit documents on your computer is not compatible with the paper type set up inside the printer. Users often encounter this problem when using A5 paper size. However, when printing A4 sizes, errors can still occur.

### Printer error says Ready To Print but can't print

This is the part that connects the computer to the printer, so when the connection cable has a problem, the machine will not recognize the print job even though it says Ready To Print. So you need to check the cable first

if you encounter the above situation.

## **How to fix the error of printed prints with stripes, wrong colors on Canon printers**

When the print output does not meet your expectations or appears streaks or wrong color, print a printhead test to find out the error and fix it before you intend to replace the printer. mine.

### **Printer error not receiving print job**

- Your computer is having an operating system error.
- The cable connecting the printer to the computer may be damaged or loose.
- The printer is not powered on.

### **The printer prints on white paper**

- The toner cartridge is out of ink.
- The toner cartridge is damaged.
- The axis from the printer is damaged.
- The printer has a clogged nozzle.

### **Printer does not pull paper**

When you need to print a document, you issue a print command and the machine has confirmed the order, but when you proceed to take the paper, it cannot and receive an error message: The light turns red and indicates paper-out.

### **The printer is blurry, not bold, not clear**

The reason may stem from whether you fill in the wrong or incorrect ink, the printer will print blurry. The quality of genuine inks or toners will affect print quality.

### **Printer pulls multiple sheets of paper at once**

- The smooth paper surface makes the spool uneven.
- The paper is too thin, has a high moisture content, or the paper is damp from contact with water.
- Improperly placed on the print tray.

### **Instructions on how to print 2-sided matching in Word**

With long documents, you can align 2-sided printing symmetrically in Word and then bind the spine into a volume to save paper and look better.

The article showed you how to fix the Cannot recognize the USB connection error when installing the printer. Good luck!

You finished reading the article "**How to fix Cannot recognize the USB connection error when installing the printer**" edited by the [TipsMake](#) team. We hope this article has provided you with many useful tech tips and tricks. You can search for similar articles on tips and guides. Thank you for reading and for following us regularly.