

How to fix boot errors on Windows 8

If you are using Windows 8, you will probably notice that this operating system gives an impressive boot time, much faster than previous Windows versions. That's because in Windows 8, Microsoft applies a new boot feature called 'quick start', which is a combination of cold boot mode and hibernate Windows startup.

If you are using Windows 8, you will probably notice that this operating system gives an impressive boot time, much faster than previous Windows versions. That's because in Windows 8, Microsoft adopted a new boot feature called 'quick start', which is a combination of "cold" boot mode and hibernate boot mode.

With this feature, when you turn off the computer, in fact your system is not turned off completely as before (the data is deleted and then reloaded at the next boot), but the machine is still in a mode ' *hibernate* ' new. In this mode, drivers, services and other software will be pre-loaded in memory. When you boot up again, the system does not need to reload the entire hardware, as well as reload the drivers and services as before, making the boot process faster.

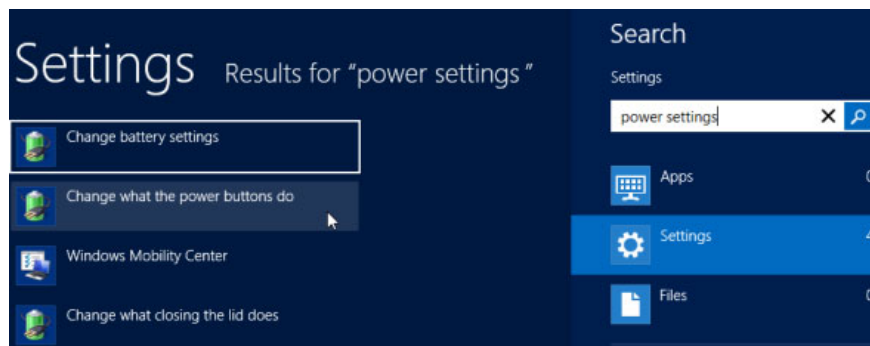
This way of booting is completely different from normal hibernation , because the previous hibernation feature means that the entire state of the system will be saved to memory, while '*quick start*' does not save the chapters. the process you are running before shutting down.

However, this causes some problems. Some computer systems with older drivers do not seem to be compatible with this feature, causing the machine to not "*hibernate*" in the previous way. Therefore, the data used to boot the system fails may cause the machine to fail to boot, just like in the **previous Windows versions** .

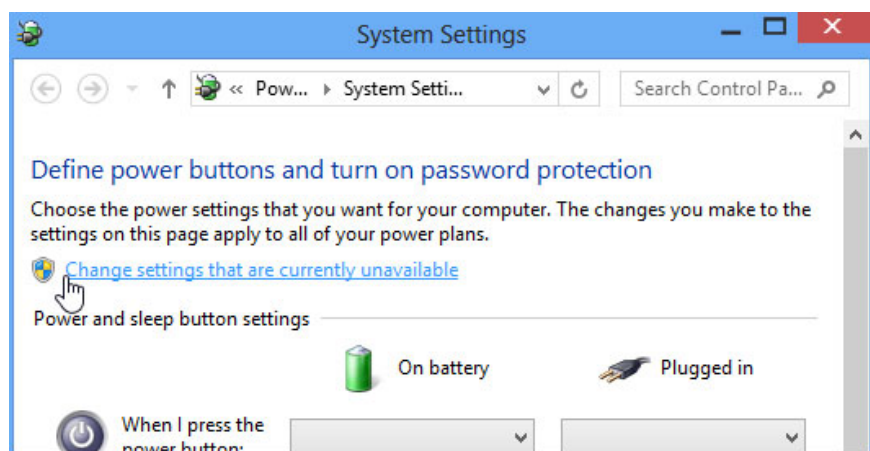
Disable new features

If you're using **Windows 8** and have trouble booting the system, you may want to disable the quick boot feature. However, it should be noted that this will cause the boot time of the machine to increase, but it is still more than letting the system fail.

You access the **Charm** bar of the operating system, select **Settings** then search for the keyword '**power settings**', click on '**Change what the power buttons do**'.



In the window that appears, click on the '**Change settings that are currently unavailable**' option near the top. In the next window, uncheck the '**Turn on fast startup (recommended)**' field under the **Shutdown settings** section near the bottom of the window.



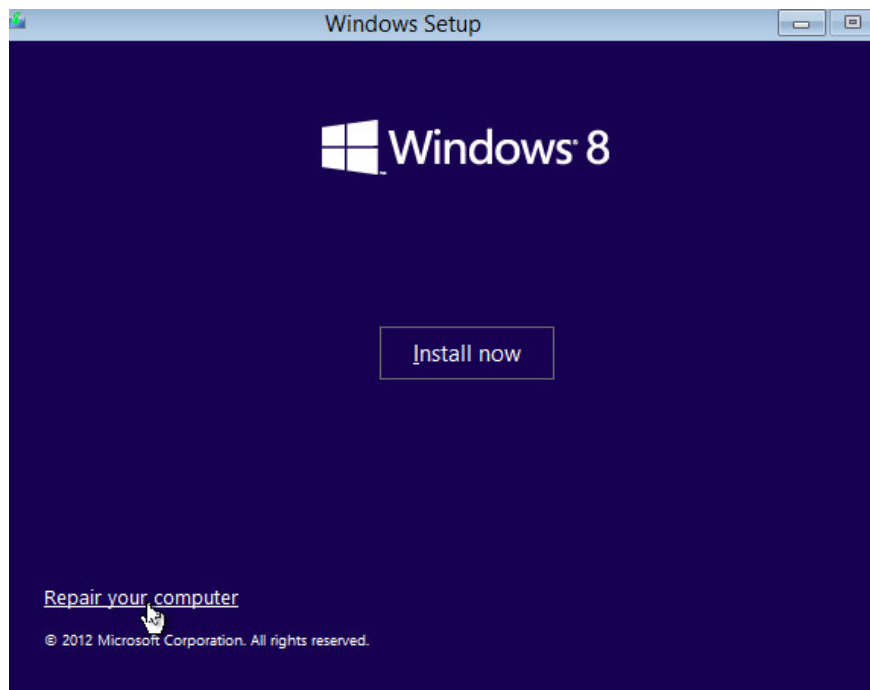
Click Next on the **Save** button and since then, Windows will boot in the old way in previous versions. As mentioned, the boot time will be longer but in return the machine no longer has a boot error. If after testing, the system still fails, you should re-enable this mode to improve the boot speed of the device.

Fix boot data error (Startup Data)

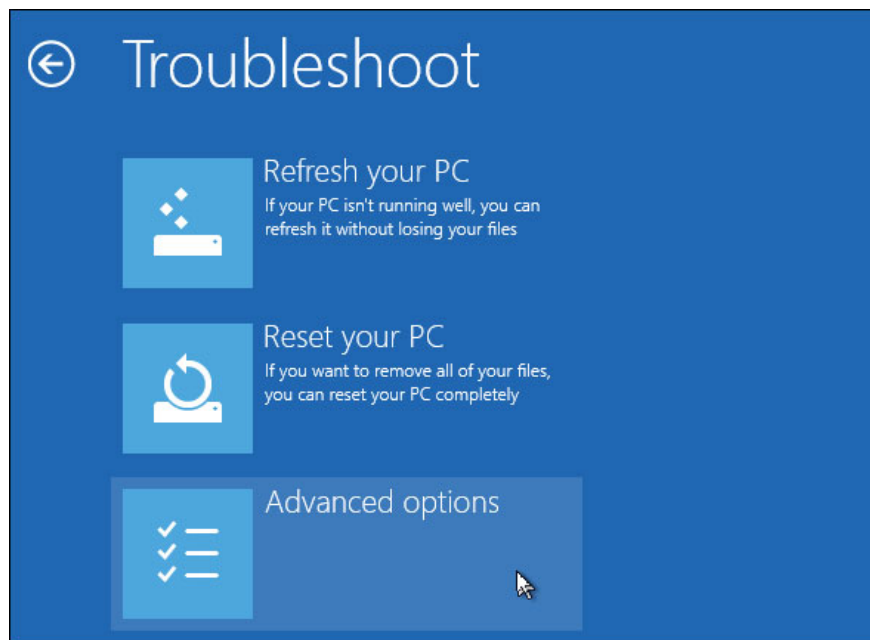
When booting from the hard drive, the machine will check the master boot record of the drive to load the boot loader and start the boot process. However, the master boot record itself (MBR) may be overwritten or the damaged boot data will cause the machine to fail to boot and report an error.

In this case, you can use the Windows boot installation disc or a **bootable USB** to perform the repair.

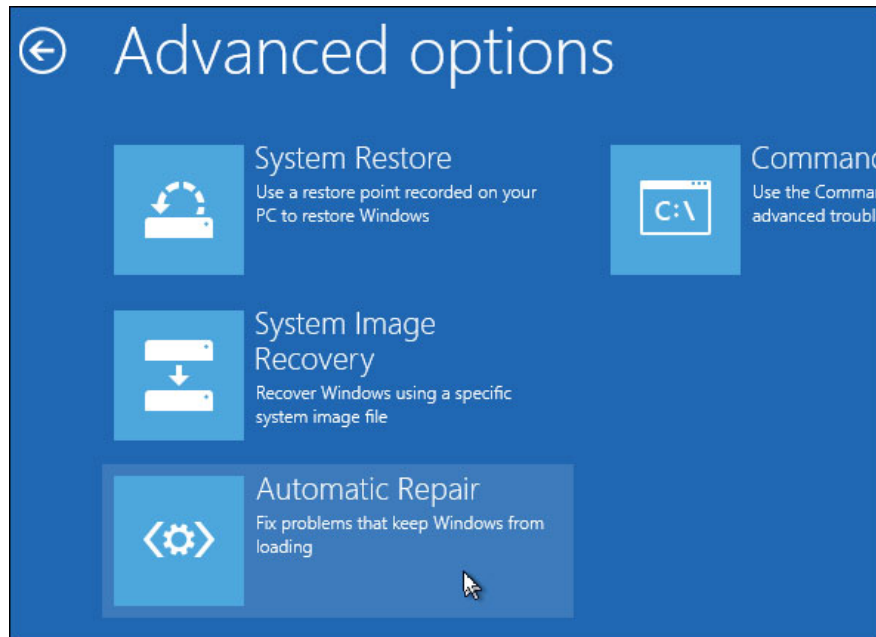
After inserting the disc into the optical drive or plugging in the USB and rebooting, you will see the Windows 8 installer appear. You select the language, keyboard type and then click inside until the window like the one below appears. Here you click on the option to '**Repair your computer**' in the left corner of the window.



Click **Troubleshoot**, then **Advanced Options**.



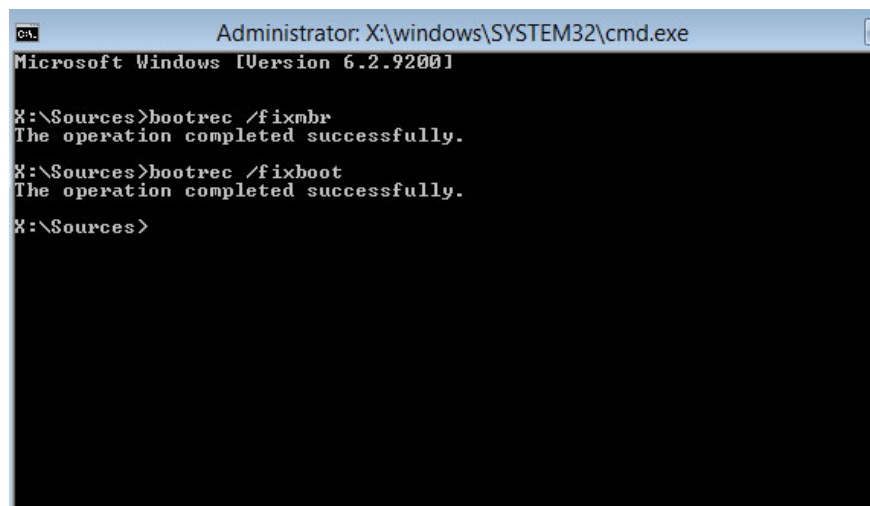
The first thing you should try is to click on **Automatic Repair** to let Windows fix it automatically.



If this doesn't work, go to the Command Prompt window, enter the following commands and press **Enter** after each command:

```
bootrec /fixmbr  
bootrec /fixboot
```

The first command will fix the master boot record for you, and the second command will help write a new boot sector for the hard drive.



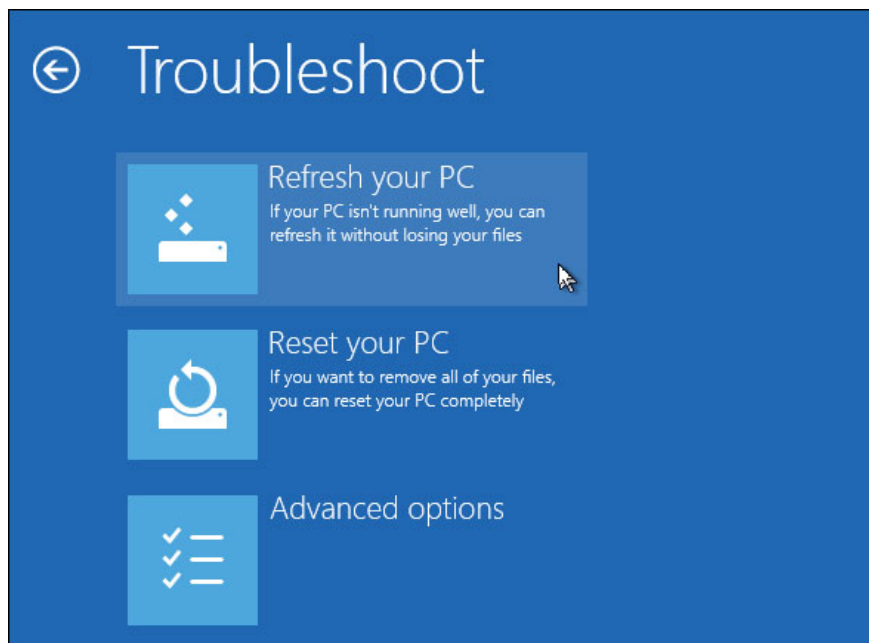
In some cases, after these two commands, you may need to run the commands below:

```
bootrec /scanos  
bootrec /rebuildbcd
```

The first command will scan the entire system for the operating system and include them in the boot configuration data to ensure that the boot loader knows where the Windows installation data is. The second

command will also scan the system for the operating system but display a list and allow you to select the operating system you want to add.

Fix other errors



After the above two methods, if your Windows 8 computer still doesn't boot as usual, you may want to reset the machine to a stable state before. Notice that if the boot process fails, you will see the window below.

If not, you can boot the installation disc or USB device and access the **Troubleshoot** page . On the **Troubleshoot** screen, select **Refresh your PC to reset** the PC system files to the default state. Of course, you can also reinstall the operating system completely, but the **Refresh** feature of Windows 8 gives the same effect but the time is much faster.

You finished reading the article "**How to fix boot errors on Windows 8**" edited by the [TipsMake](#) team. We hope this article has provided you with many useful tech tips and tricks. You can search for similar articles on tips and guides. Thank you for reading and for following us regularly.