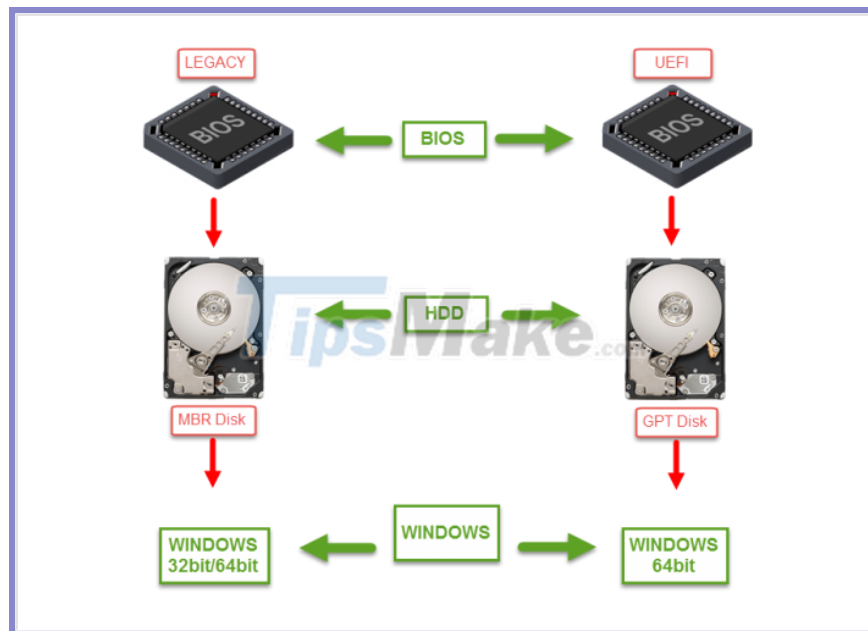


# How to fix Boot device not found error

Boot device not found error. When we reinstall Windows and first start the computer, you will often encounter the error Boot device not found, in fact this is a relatively common error and many people encounter.

When we reinstall Windows and first start the computer, you will often encounter the error Boot device not found, in fact this is a relatively common error and many people encounter. However, this is just a mistake for you during the Windows installation process, in this article I will guide you how to fix: Boot device not found.

## 1. Identify the cause of Boot device not found



Currently, we have a standard for Legacy installation and a standard for UEFI installation when installing the operating system on the computer and specifically this problem is managed by the motherboard BIOS. Normally, when the motherboard is in default mode, the BIOS only supports one of the other two installation standards.

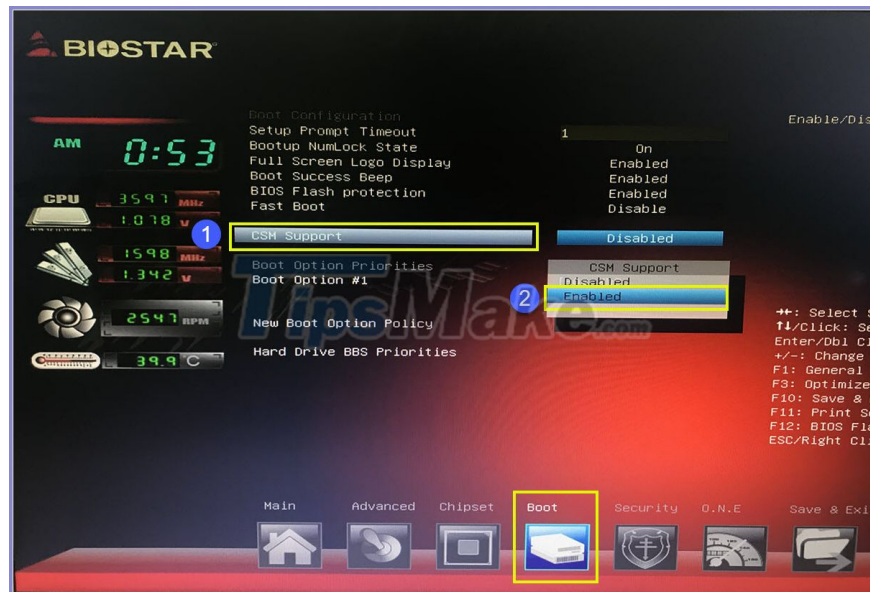
This means that if you install Windows under UEFI standard, it will not be able to boot if the BIOS is set to Legacy and vice versa. Your job now is to switch the BIOS back to the correct Windows installation standard mode.

## 2. How to fix: Boot device not found

To fix this error quickly and simply, you just need to access the BIOS and reset the standard Boot installation. You proceed to do the following:

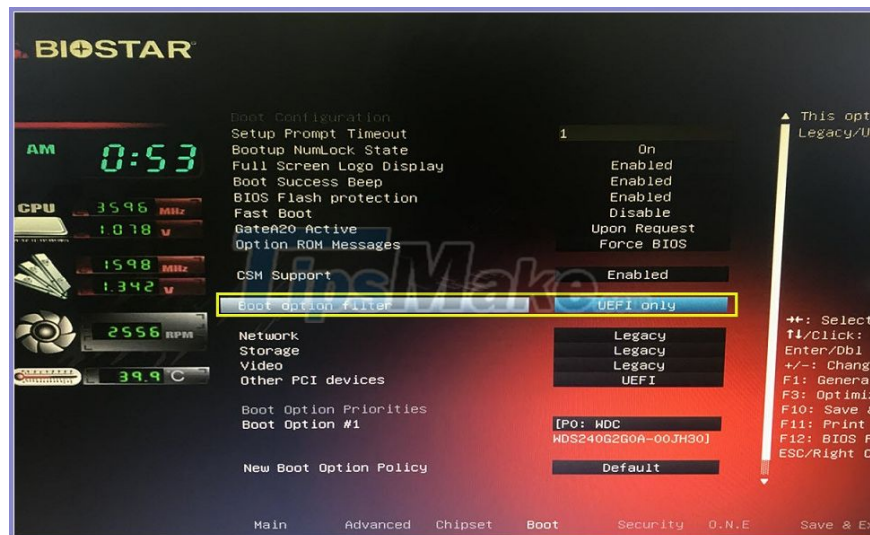
Step 1: First, reboot your computer and access the motherboard BIOS. Most motherboards these days use Del to access the BIOS.

Step 2: Then, select Boot on the toolbar and navigate to CSM Support. Please select CSM Support and select Enable to enable this feature!



Step 3: At this point, you look at the Boot Option Filter and you will see that they are supporting standard Windows UEFI installation. If your Windows is installed in Legacy standard, it will not be able to boot!

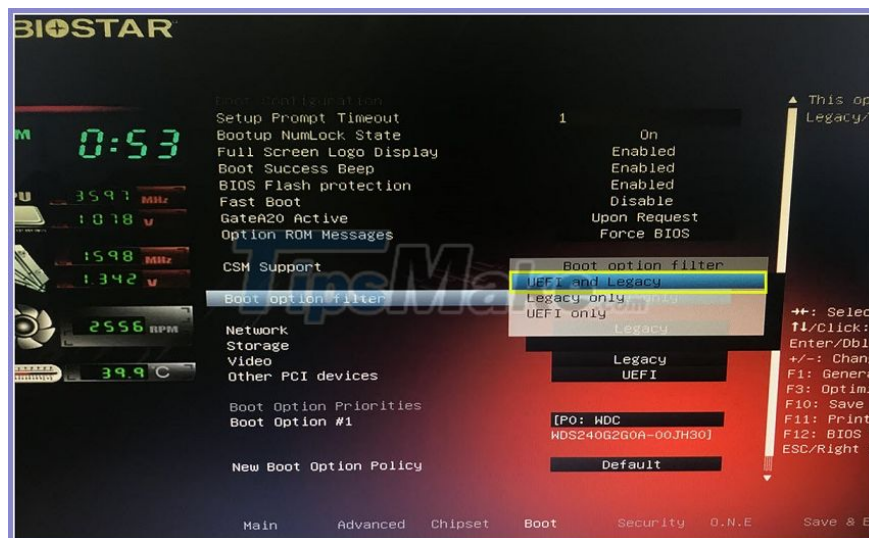
Please select the Boot option filter and select them to change.



Step 4: Normally, today's motherboards all support UEFI and Legacy parallel, please choose this feature. Enabling parallel support for UEFI and Legacy will make setting up Windows a lot simpler because Windows is

installed in Legacy or UEFI standard, and can both be booted in the BIOS.

However, if your motherboard does not feature parallel support for UEFI and Legacy, then you can change UEFI or Legacy to see what setting standard is being used by your Windows.



Step 5: Finally, press F10 and Enter to save the settings. At this point, your computer will restart and see if they still have Boot device not found errors or not!

Note: The BIOS interface of different computers is different, but their 'keyword' features are similar so please do the same!

Good luck!

You finished reading the article "**How to fix Boot device not found error**" edited by the [TipsMake](#) team. We hope this article has provided you with many useful tech tips and tricks. You can search for similar articles on tips and guides. Thank you for reading and for following us regularly.