

# How to fix Bluetooth peripheral device driver not found on Windows

Bluetooth devices that are first connected on a computer are often not found with a Bluetooth peripheral device driver error.

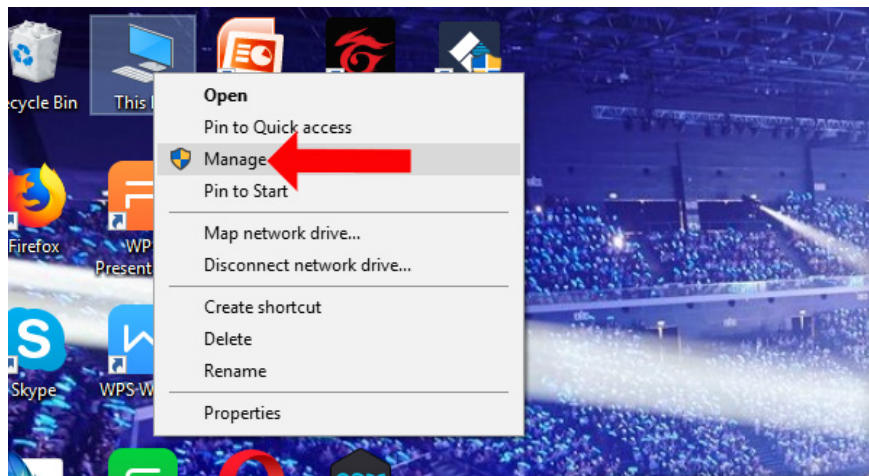
When you first connect a Bluetooth device on a Windows computer, such as a Bluetooth headset, a Bluetooth device with a device will get a Bluetooth peripheral device driver error not found. Bluetooth connection error with computer, Bluetooth is not available, does not accept frequently connected devices. With this error, it may be because the computer lacks Bluetooth connectivity drivers, so the computer cannot recognize the Bluetooth device. Connecting Bluetooth to a computer is not as easy as when we connect on the phone. The following article will show you how to fix not found Bluetooth peripheral device driver error on Windows.

1. How to connect a Bluetooth device on Windows
2. How to fix lost Bluetooth error on Windows 10 Settings settings
3. How to identify and install the correct driver missing for Windows?

## How to fix Bluetooth connection errors on Windows

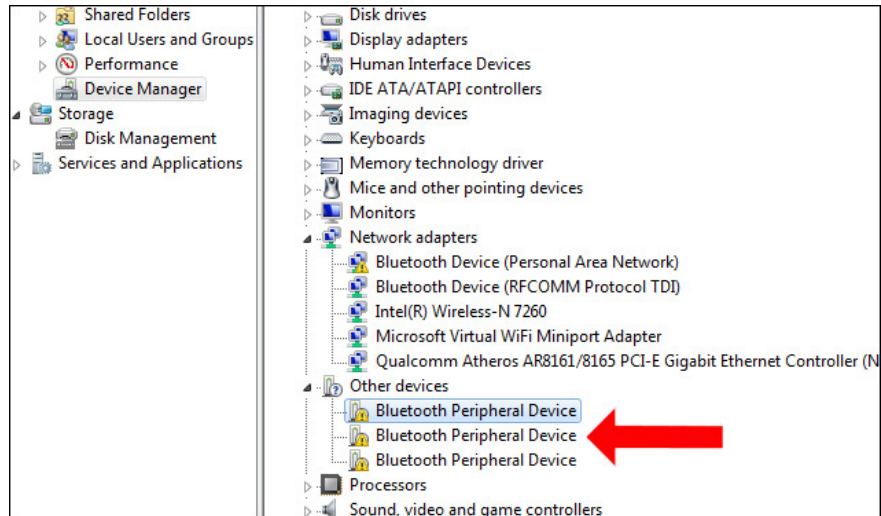
### Step 1:

At the computer icon outside the screen interface, right-click and **select Manage** .



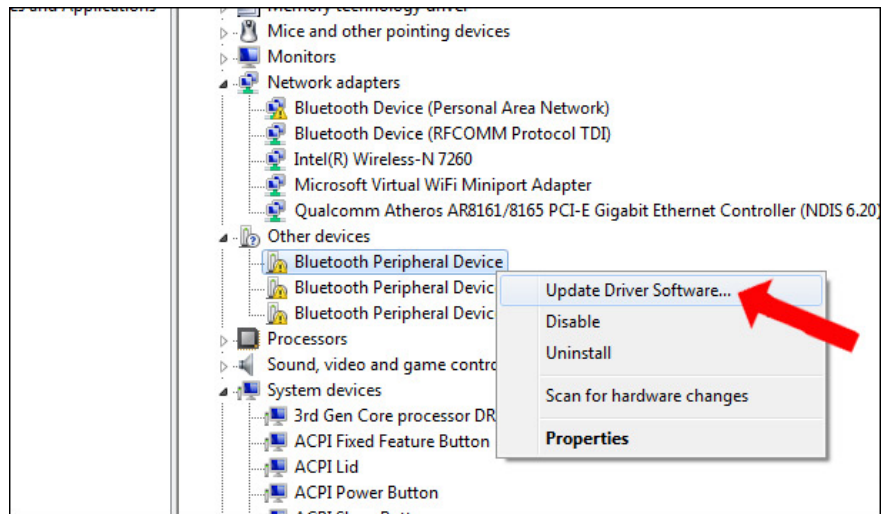
### Step 2:

Switch to the Computer Manage interface, click on the **Device Manager** item below and then look to the right, the **Other devices** section will see the **three Bluetooth peripheral devices reporting an error** . When a Bluetooth device connected to a computer but not recognized is displayed as shown.



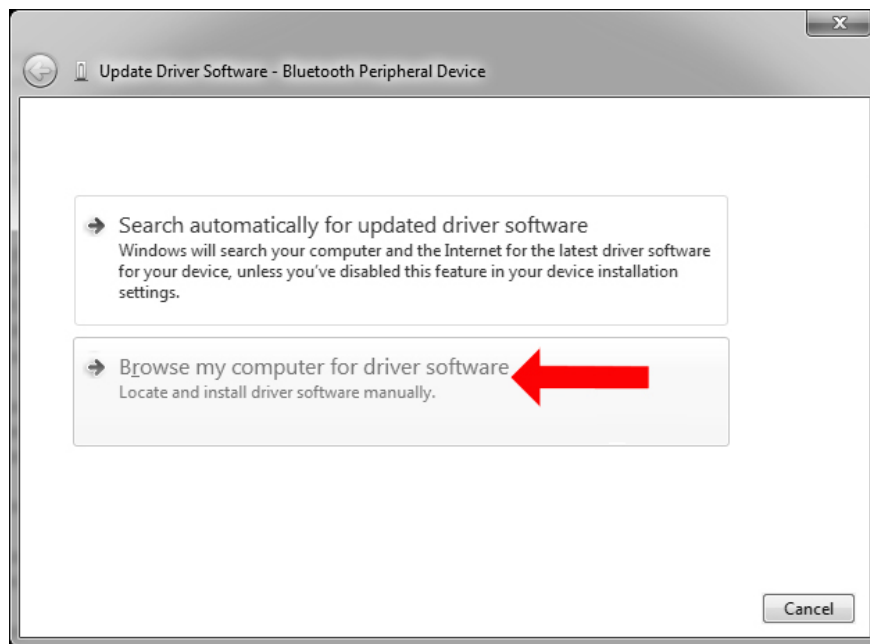
**Step 3:**

Right-click on the missing driver and select **Update Driver Software** .

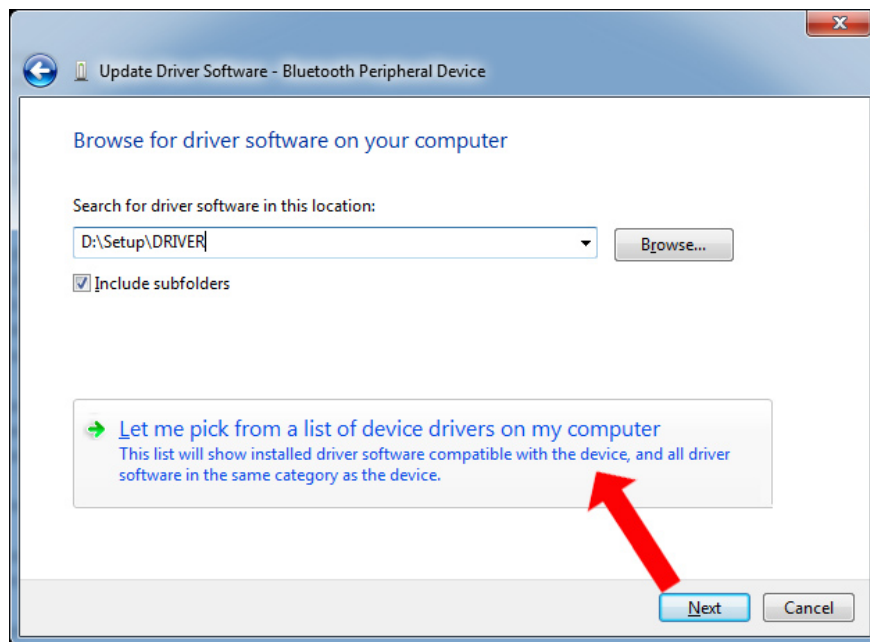


**Step 4:**

Click next to **Browse my computer for driver Software** in the new interface that appears.

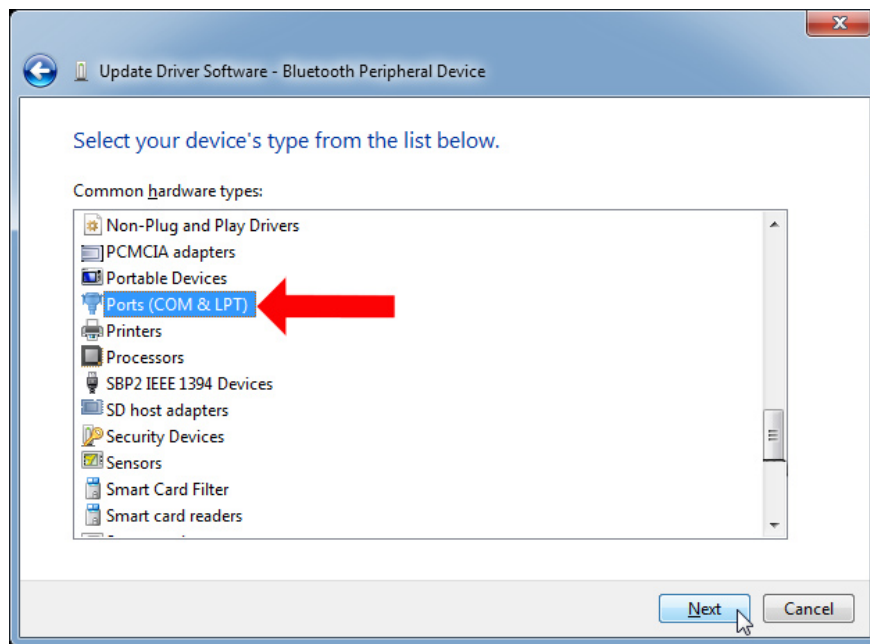


Switch to the new interface, we select the driver available in Windows list, click **Let me pick from a list of device drivers on my computer** .



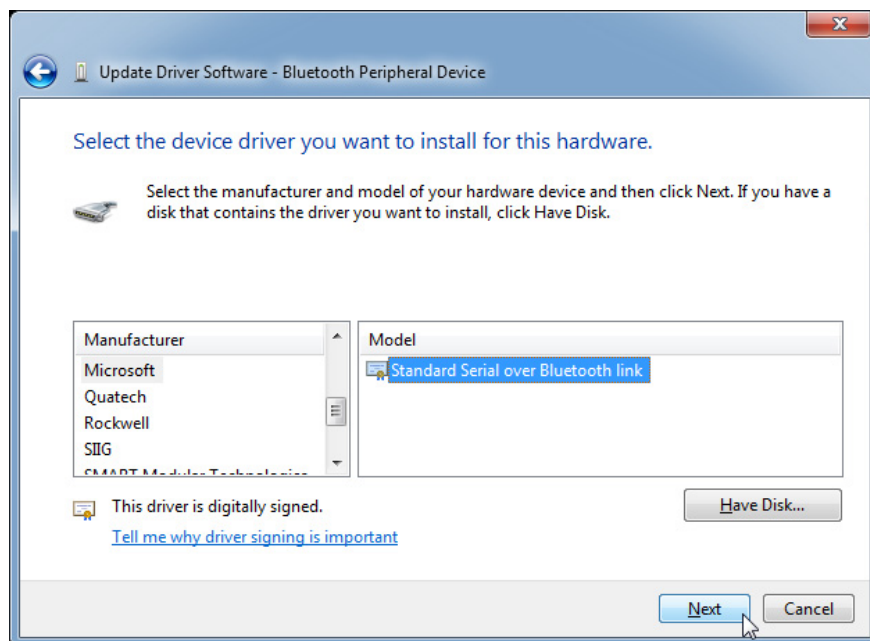
**Step 5:**

Next click on **Ports (COM & LPT)** and then click **the Next button** below.

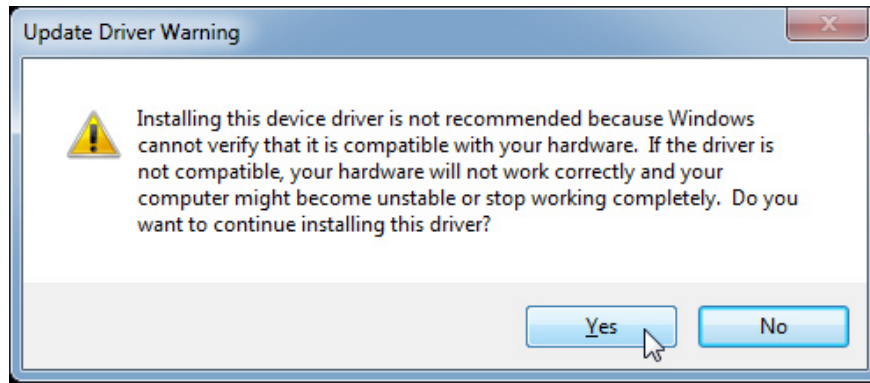


### Step 6:

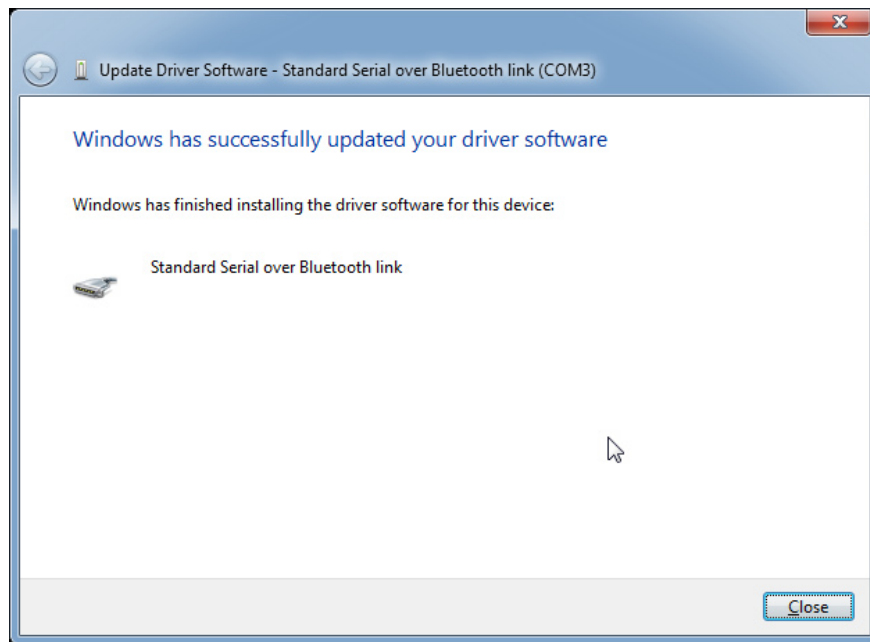
In the interface below, **Manufacturer** section selects **Microsoft** . Look beside the **Model** section to **select Standard Serial over Bluetooth link** and click the Next button below.



If it appears that this driver may not be compatible with the device, click Yes to continue the installation.

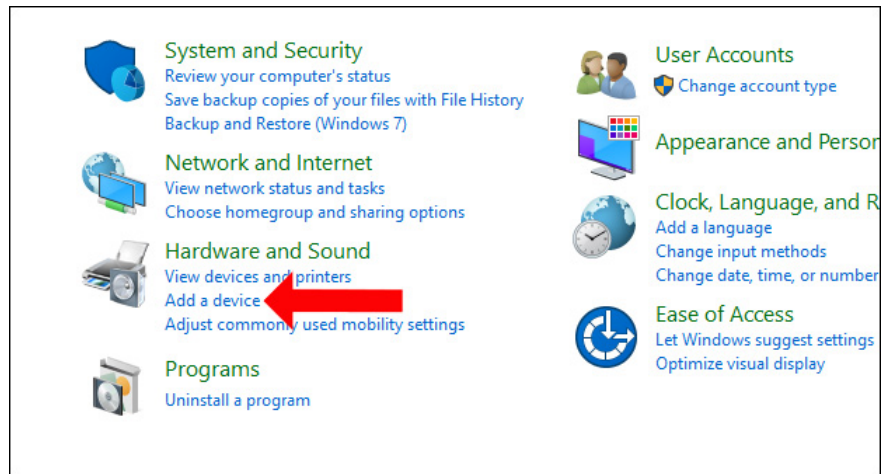


You wait for the driver installation process to be successful and then click the Close button to close the interface. We continue with two remaining Bluetooth peripheral device error indicators as above.

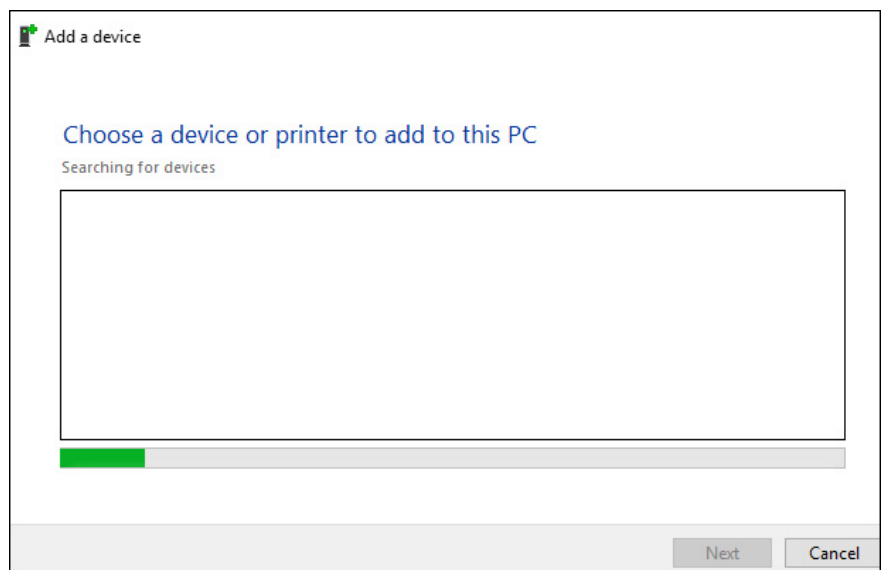


**Step 7:**

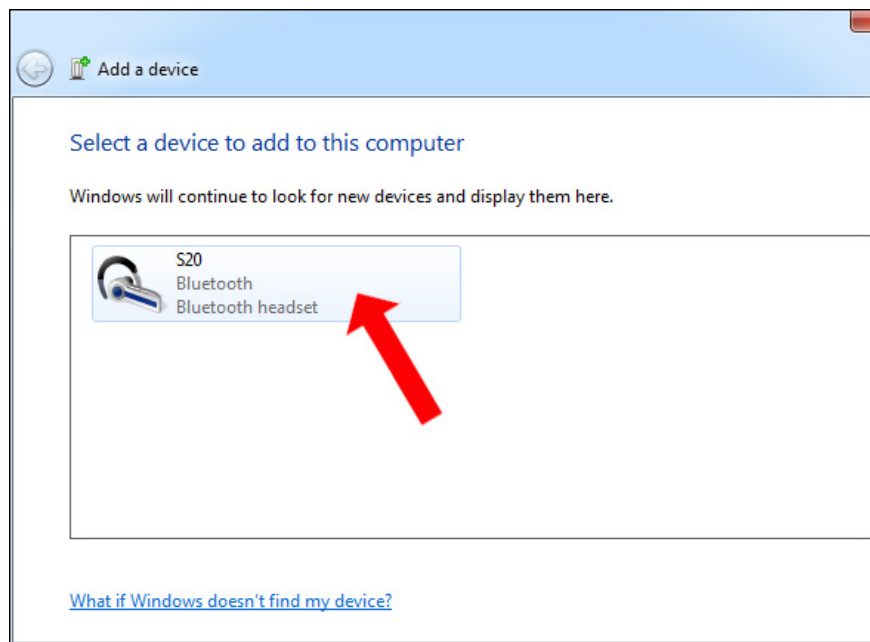
Next, open **Control Panel** in **Hardware and Sound** and click **Add a device** .



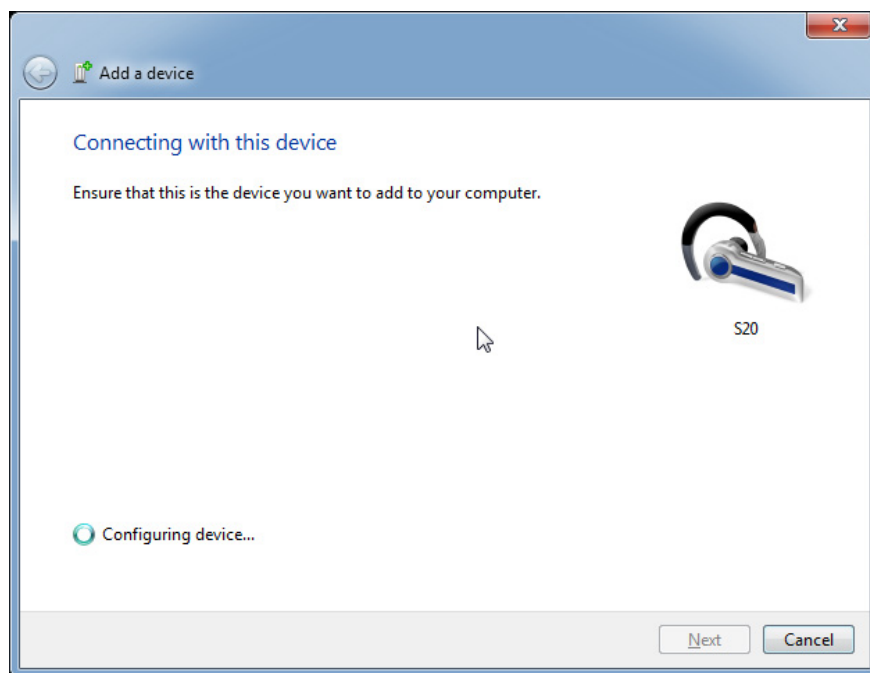
Then Windows will proceed to search all the devices around it.



When you see the Bluetooth device you want to connect, double-click the device.

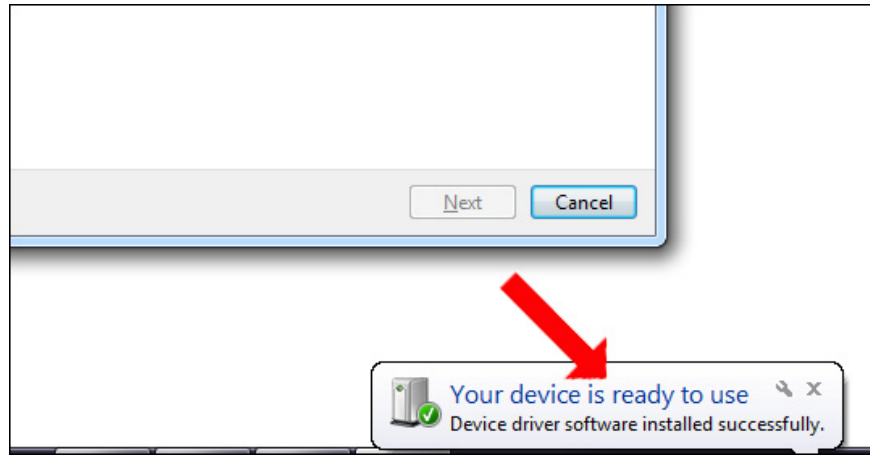


We wait for the computer to connect to the Bluetooth device.

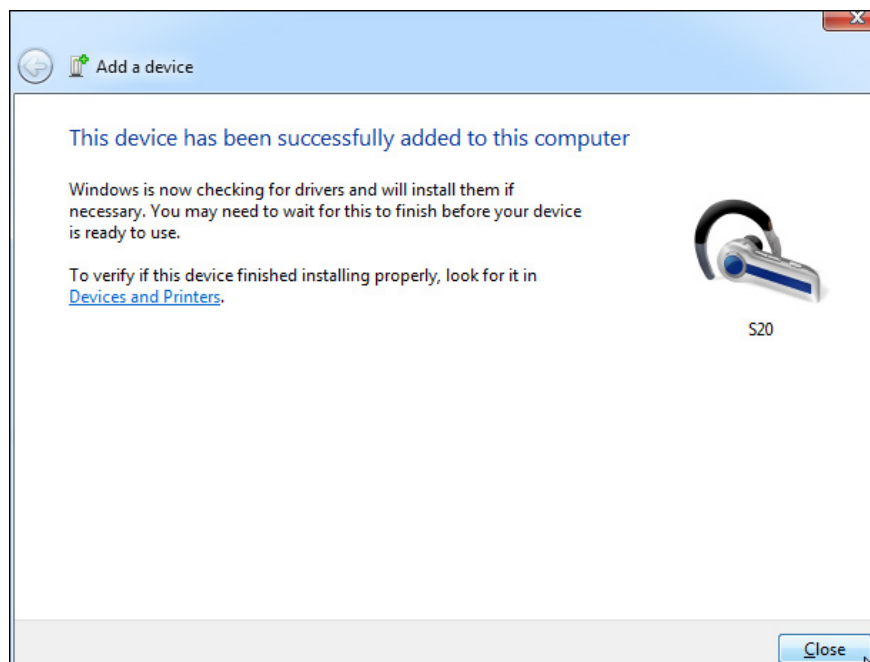


### Step 8:

When you see the message **Your device is ready to use** in the lower right corner of the screen, the Bluetooth connection is successful.

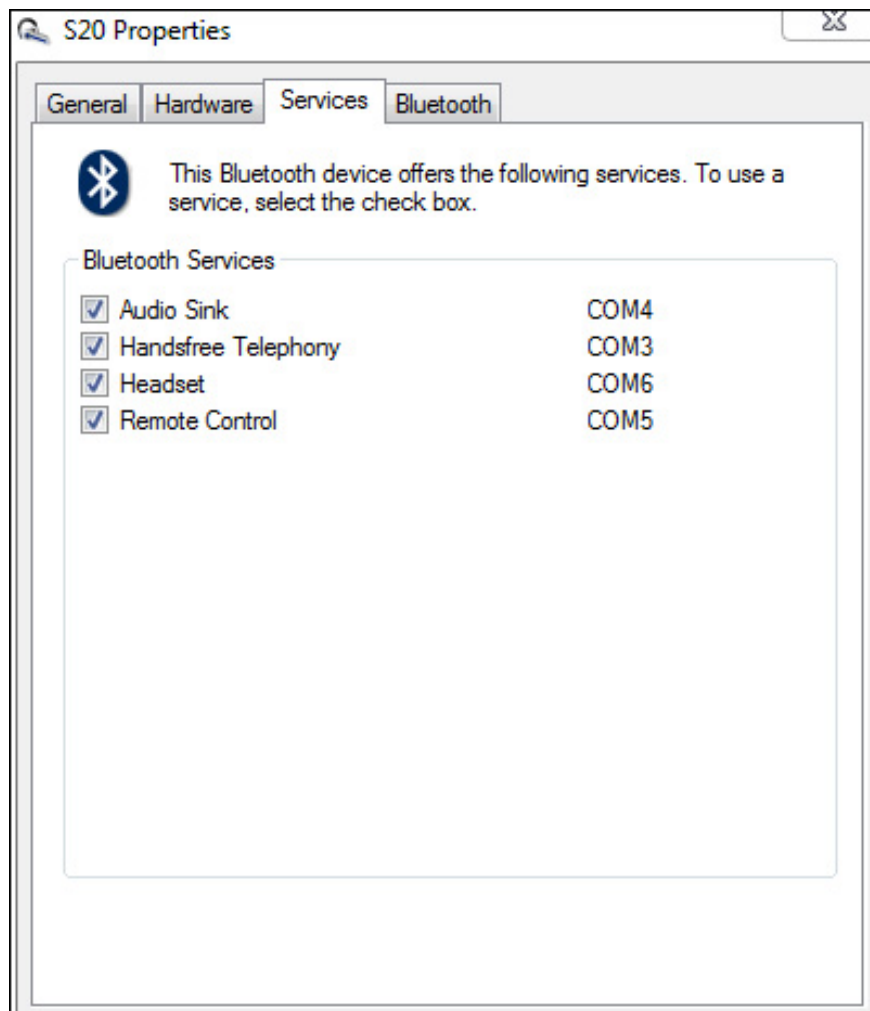


At the same time, the interface of the device will inform **Successfully added to this computer** .



### Step 9:

Next go to **Bluetooth Devices**, right-click on **the Bluetooth device name and** select **Properties** . New interface appears on the **Services tab** , check the content below and click OK.



Thus the Bluetooth device is connected to the computer and is not detected by a Bluetooth peripheral device driver error. Usually the Bluetooth connection error with the computer will be related to the lack of drivers, so you just need to download the Bluetooth driver.

See more:

1. Fix Bluetooth error does not work on Windows 7 or Windows 8
2. Instructions for installing bluetooth microphones on smartphones to sing karaoke
3. Instructions on how to set up Bluetooth on Windows 10

Hope this article is useful to you!

You finished reading the article "**How to fix Bluetooth peripheral device driver not found on Windows**" edited by the [TipsMake](#) team. We hope this article has provided you with many useful tech tips and tricks. You can search for similar articles on tips and guides. Thank you for reading and for following us regularly.